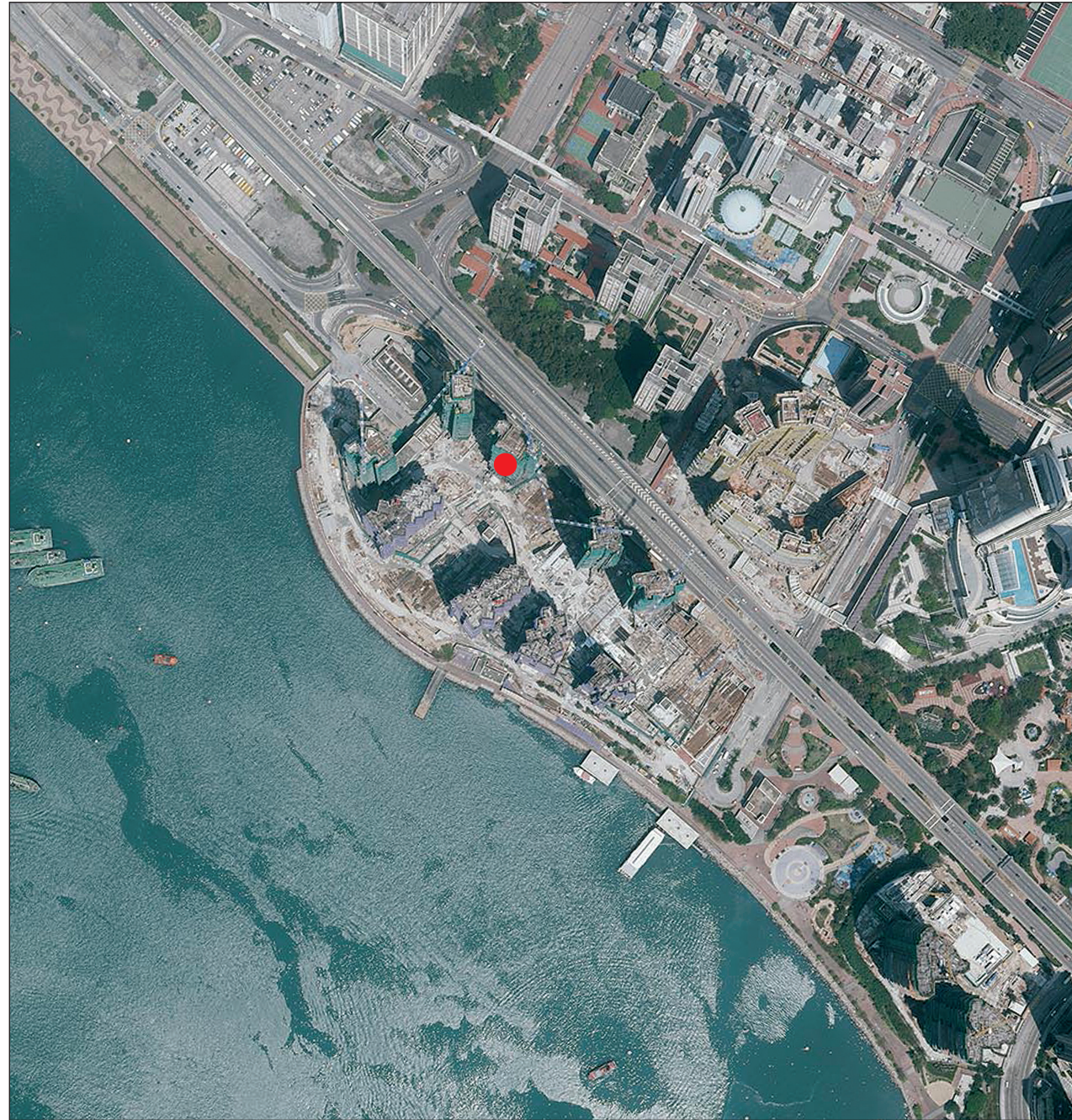


## 期數的鳥瞰照片

## Aerial photograph of the Phase



● Location of the Phase  
期數的位置

摘錄自地政總署測繪處於2017年4月2日在6,900呎飛行高度拍攝之鳥瞰照片，編號為E017648C。  
Extracted from part of the aerial photograph taken by the Survey and Mapping Office of the Lands Department at a flying height 6,900 feet, Photo No. E017648C, dated 2nd April 2017.

香港特別行政區政府地政總署測繪處©版權所有，未經許可，不得翻印。

Survey and Mapping Office, Lands Department, The Government of HKSAR © Copyright reserved – reproduction by permission only.

因技術原因(例如期數之形狀)，鳥瞰照片所顯示之範圍多於《一手住宅物業銷售條例》所要求。

Due to technical reasons (such as the shape of the Phase), the aerial photograph shows more than the area required under the Residential Properties (First-hand Sales) Ordinance.

## 期數的鳥瞰照片

### Aerial photograph of the Phase



鳥瞰照片並不覆蓋本空白範圍  
This blank area falls outside the  
coverage of the aerial photograph

摘錄自地政總署測繪處於2018年3月23日在6,900呎飛行高度拍攝之鳥瞰照片，編號為E038640C。  
Extracted from part of the aerial photograph taken by the Survey and Mapping Office of the Lands Department at a flying height 6,900 feet, Photo No. E038640C, dated 23rd March 2018.

香港特別行政區政府地政總署測繪處©版權所有，未經許可，不得翻印。

Survey and Mapping Office, Lands Department, The Government of HKSAR © Copyright reserved – reproduction by permission only.

因技術原因(例如期數之形狀)，鳥瞰照片所顯示之範圍多於《一手住宅物業銷售條例》所要求。

Due to technical reasons (such as the shape of the Phase), the aerial photograph shows more than the area required under the Residential Properties (First-hand Sales) Ordinance.

## 期數的鳥瞰照片

### Aerial photograph of the Phase



鳥瞰照片並不覆蓋本空白範圍  
This blank area falls outside the  
coverage of the aerial photograph

摘錄自地政總署測繪處於2018年3月23日在6,900呎飛行高度拍攝之鳥瞰照片，編號為E038642C。  
Extracted from part of the aerial photograph taken by the Survey and Mapping Office of the Lands Department at a flying height 6,900 feet, Photo No. E038642C, dated 23rd March 2018.

香港特別行政區政府地政總署測繪處©版權所有，未經許可，不得翻印。

Survey and Mapping Office, Lands Department, The Government of HKSAR © Copyright reserved – reproduction by permission only.

因技術原因(例如期數之形狀)，鳥瞰照片所顯示之範圍多於《一手住宅物業銷售條例》所要求。

Due to technical reasons (such as the shape of the Phase), the aerial photograph shows more than the area required under the Residential Properties (First-hand Sales) Ordinance.

## 期數的鳥瞰照片

### Aerial photograph of the Phase



鳥瞰照片並不覆蓋本空白範圍  
This blank area falls outside the  
coverage of the aerial photograph

● Location of the Phase  
期數的位置

摘錄自地政總署測繪處於2018年3月10日在6,000呎飛行高度拍攝之鳥瞰照片，編號為E033889C。  
Extracted from part of the aerial photograph taken by the Survey and Mapping Office of the Lands Department at a flying height 6,000 feet, Photo No. E033889C, dated 10th March 2018.

香港特別行政區政府地政總署測繪處©版權所有，未經許可，不得翻印。

Survey and Mapping Office, Lands Department, The Government of HKSAR © Copyright reserved – reproduction by permission only.

因技術原因(例如期數之形狀)，鳥瞰照片所顯示之範圍多於《一手住宅物業銷售條例》所要求。

Due to technical reasons (such as the shape of the Phase), the aerial photograph shows more than the area required under the Residential Properties (First-hand Sales) Ordinance.