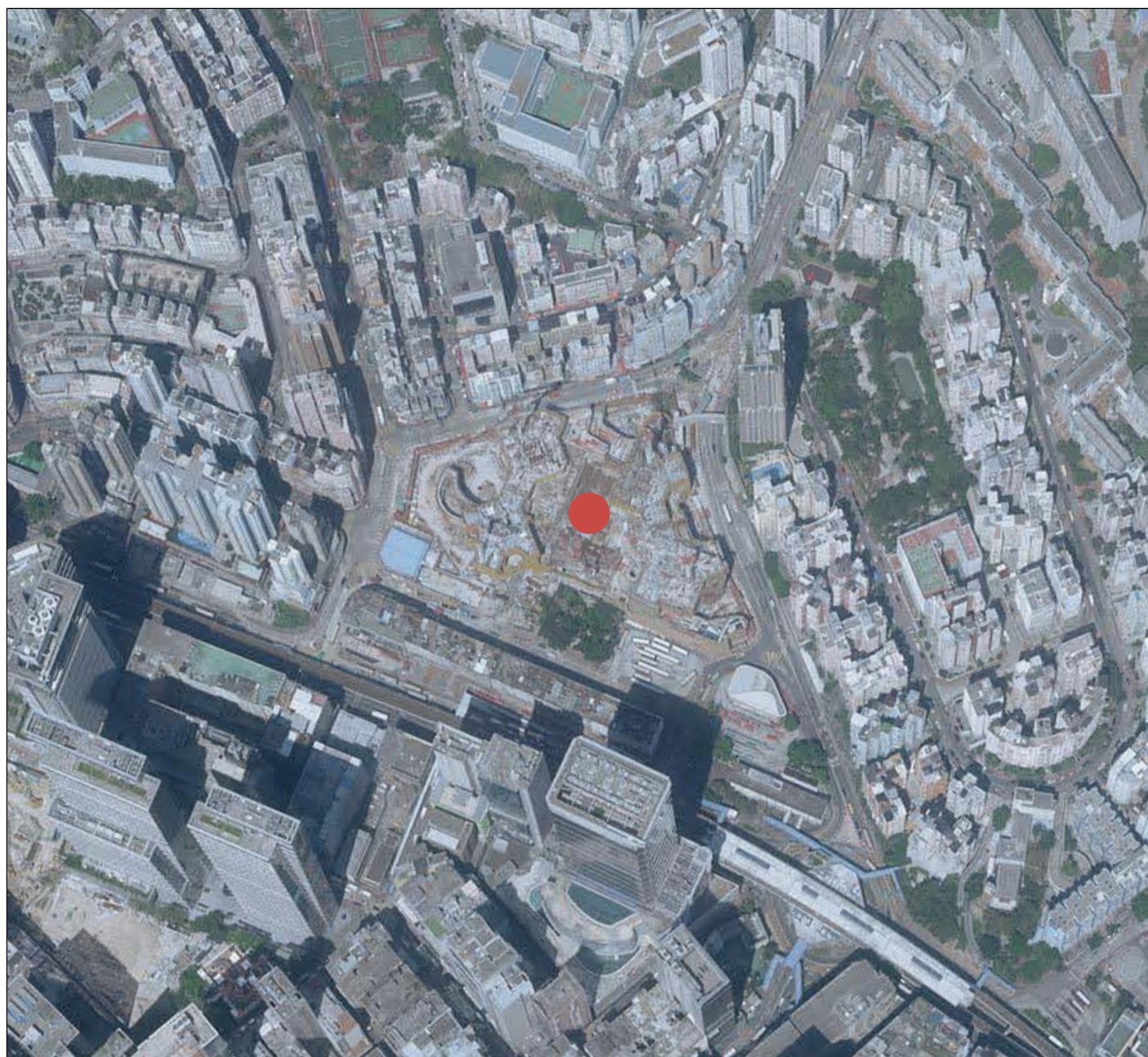


## AERIAL PHOTOGRAPH OF THE PHASE 期數的鳥瞰照片



● Location of the Phase  
期數的位置

Adopted from part of the aerial photograph, No. E046754C, dated 5 October 2018, taken by the Survey and Mapping Office, Lands Department, The Government of the Hong Kong Special Administrative Region at a flying height of 6900 feet.

摘錄自香港特別行政區政府地政總署測繪處於2018年10月5日在6900呎飛行高度拍攝之鳥瞰照片，照片編號為E046754C。

Survey and Mapping Office, Lands Department, The Government of HKSAR © Copyright reserved - reproduction by permission only.

香港特別行政區政府地政總署測繪處©版權所有，未經許可，不得翻印。

### Remarks:

1. Due to technical reasons (such as the shape of the Phase), the Aerial Photograph has shown more than the area required under the Residential Properties (First-hand Sales) Ordinance (Cap.621).
2. The Vendor advises prospective purchasers to conduct an on-site visit for a better understanding of the Phase, its surrounding environment and the public facilities nearby.

### 備註：

1. 因技術原因(例如期數之形狀)，鳥瞰照片所顯示之範圍超過《一手住宅物業銷售條例》(第621章)所要求者。
2. 賣方建議準買家到期數作實地考察，以對期數、其周邊地區環境及附近的公共設施有較佳了解。