

FLOOR PLANS OF RESIDENTIAL PROPERTIES IN THE PHASE 期數的住宅物業的樓面平面圖

Legend for floor plans 樓面平面圖圖例

A/C PLATFORM	= Air Conditioner Platform	= 空調機平台
A/C PLATFORM ABOVE	= Air Conditioner Platform Above	= 空調機平台置上
A/C PLINTH	= Air Conditioner Plinth	= 空調機底座
ACOUSTIC BAL.	= Acoustic Balcony	= 減音露台
ACOUSTIC FIN	= Acoustic Fin	= 減音鱗片
ACOUSTIC FIN BELOW	= Acoustic Fin Below	= 減音鱗片置下
ACOUSTIC U.P.	= Acoustic Utility Platform	= 減音工作平台
ACOUSTIC WINDOW	= Acoustic Window	= 減音窗
A.F.	= Architectural Feature	= 建築裝飾
A.F. ABOVE	= Architectural Feature Above	= 建築裝飾置上
A.F. AT H/L	= Architectural Feature At High Level	= 建築裝飾置高位
ALUMINIUM A.F. AT ABOVE	= Aluminium Architectural Feature At Above	= 鋁質建築裝飾置上
ALUMIN. CLADDING	= Aluminium Cladding	= 鋁質蓋層
BAL.	= Balcony	= 露台
BATH	= Bathroom	= 浴室
BATH 1	= Bathroom 1	= 浴室1
BATH 2	= Bathroom 2	= 浴室2
BR	= Bedroom	= 睡房
BR1	= Bedroom 1	= 睡房1
BR2	= Bedroom 2	= 睡房2
BR3	= Bedroom 3	= 睡房3
COMMON FLAT ROOF	= Common Flat Roof	= 公用平台
COVER FOR BAL. BELOW	= Cover For Balcony Below	= 露台上蓋置下
COVER FOR BAL.	= Cover For Balcony	= 露台上蓋
COVER FOR U.P.	= Cover For Utility Platform	= 工作平台上蓋
COVER FOR U.P. BELOW	= Cover For Utility Platform Below	= 工作平台上蓋置下
COVER FOR PIPE WELL WITH LOUVRES AT SIDES	= Cover For Pipe Well With Louvres At Side	= 管井上蓋連旁邊百葉
C.W.	= Curtain Wall	= 玻璃幕牆
D.H.	= Dog House	= 機電管道房
DIN.	= Dining Room	= 飯廳
DN	= Down	= 落
EL. ROOM	= Electric Room	= 電掣房
ELECT METER ROOM	= Electric Meter Room	= 電錶房
ELV ROOM	= Extra-low Voltage Cable Room	= 特低電壓房
ENHANCED ACOUSTIC BAL.	= Enhanced Acoustic Balcony	= 強效減音露台
EXHAUST FAN ROOM	= Exhaust Fan Room	= 排氣扇房
FLAT ROOF	= Flat Roof	= 平台
FLAT ROOF AT 7/F ONLY	= Flat Roof At 7/F Only	= 僅於7樓之平台
FLAT ROOF AT 22/F ONLY	= Flat Roof At 22/F Only	= 僅於22樓之平台
FLAT ROOF BELOW	= Flat Roof Below	= 平台置下
FLUSHING WATER PUMP ROOM	= Flushing Water Pump Room	= 沖廁水泵房
FULL HEIGHT GLASS WALL	= Full Height Glass Wall	= 全高玻璃牆
GLASS CLADDING	= Glass Cladding	= 玻璃蓋層
HR	= Hose Reel	= 消防喉轆
KIT.	= Kitchen	= 廚房
LIFT LOBBY 1	= Lift Lobby 1	= 升降機大堂 1
LIFT LOBBY 2	= Lift Lobby 2	= 升降機大堂 2
LIFT MACHINE ROOM	= Lift Machine Room	= 升降機機房
LIFT SHAFT	= Lift Shaft	= 升降機井道
LIGHT WELL	= Light Well	= 採光井
LIV.	= Living Room	= 客廳
LOUVRE ENCLOSURE FOR A/C	= Louvre Enclosure For Air Conditioner	= 空調機百葉罩
MBR	= Master Bedroom	= 主人睡房
M.BATH	= Master Bathroom	= 主人浴室
M.BATH 1	= Master Bathroom 1	= 主人浴室 1
M.BATH 2	= Master Bathroom 2	= 主人浴室 2
M.BATH 3	= Master Bathroom 3	= 主人浴室 3
METAL GRILLE	= Metal Grille	= 金屬欄柵

FLOOR PLANS OF RESIDENTIAL PROPERTIES IN THE PHASE 期數的住宅物業的樓面平面圖

Legend for floor plans 樓面平面圖圖例

M.L AT H/L	= Metal Louvres At High Level	= 金屬百葉置高位
M.W.	= Maintenance Window	= 維修窗
OPEN KIT.	= Open Kitchen	= 開放式廚房
P.D.	= Pipe Duct	= 管槽
PIPE WELL	= Pipe Well	= 管井
POTABLE WATER PUMP ROOM	= Potable Water Pump Room	= 飲用水泵房
PRIVATE FLAT ROOF	= Private Flat Roof	= 私人平台
R.C FIN ABOVE	= Reinforced Concrete Fin Above	= 鋼筋混凝土鑄置上
R.C. COVER AT 21/F ONLY	= Reinforced Concrete Cover At 21/F Only	= 僅於21樓之鋼筋混凝土上蓋
R.C. PLINTH	= Reinforced Concrete Plinth	= 鋼筋混凝土底座
REFUSE STORAGE ROOM	= Refuse Storage Room	= 垃圾房
STORE	= Store Room	= 儲物房
U.P.	= Utility Platform	= 工作平台
UP	= Up	= 上
WC	= Water Closet	= 洗手間
WMC	= Water Meter Room	= 水錶房

Notes:

1. There are architectural features and / or exposed pipes on external walls of some of the floors. For their locations, please refer to the latest approved building plans.
2. Exposed or concealed common pipes are located at or adjacent to balcony and / or flat roof and / or utility platform and / or air-conditioning platform and / or external wall of some residential units. For their locations, please refer to the latest approved building plans.
3. Some residential units have ceiling bulkheads and / or sunken slab from unit above, for the installation of air conditioning system and / or electrical and mechanical services, located at living / dining room, bedrooms, corridor and / or kitchen.
4. Balconies and utility platforms are non-enclosed areas.
5. Symbols of fittings shown on the floor plans, such as bathtubs, sink, water closets, sink counter, etc., are retrieved from the latest approved building plans for general indication only.

備註：

1. 部份樓層外牆範圍設有建築裝飾及/或外露喉管，其位置請參考最新的經批准的建築圖則。
2. 部份住宅單位的露台及/或平台及/或工作平台及/或空調機平台及/或外牆或其旁設有外露或內藏之公用喉管，其位置請參考最新的經批准的建築圖則。
3. 部份住宅單位客/飯廳、睡房、走廊及/或廚房有假天花及/或上層單位之跌級樓板用以安裝空調系統及/或機電設備。
4. 露台及工作平台為非封閉的地方。
5. 樓面平面圖上所顯示的形象裝置符號，例如浴缸、洗滌盆、坐廁、洗滌盆櫃等乃摘自最新的經批准的建築圖則，只作一般性標誌。

FLOOR PLANS OF RESIDENTIAL PROPERTIES IN THE PHASE 期數的住宅物業的樓面平面圖

TOWER 3 6/F FLOOR PLAN 第3座 6樓樓面平面圖

	Tower 座	Unit 單位		A	B	C	D	E	F	G	H	J	K	L	M	
		Floor 樓層														
Floor-to-floor height of each residential property (mm) 每個住宅物業的層與層之間的高度(毫米)	3	6/F		2775, 2800, 2900, 3150		2775, 2800, 3150, 3350		2775, 2800, 2900, 3150		2775, 2800, 3100, 3150		2775, 2800, 3150, 3350		2775, 2800, 2900, 3150, 3350		2775, 2800, 2900, 3150,
The thickness of the floor slabs (excluding plaster) of each residential property (mm) 每個住宅物業的樓板的厚度(不包括灰泥)(毫米)		6樓		150, 400		150		150, 400		150		150, 450				

The internal areas of the residential properties on the upper floors will generally be slightly larger than those on the lower floors because of the reducing thickness of the structural walls on the upper floors.

因住宅物業的較高樓層的結構牆的厚度遞減，較高樓層的內部面積，一般比較低樓層的內部面積稍大。

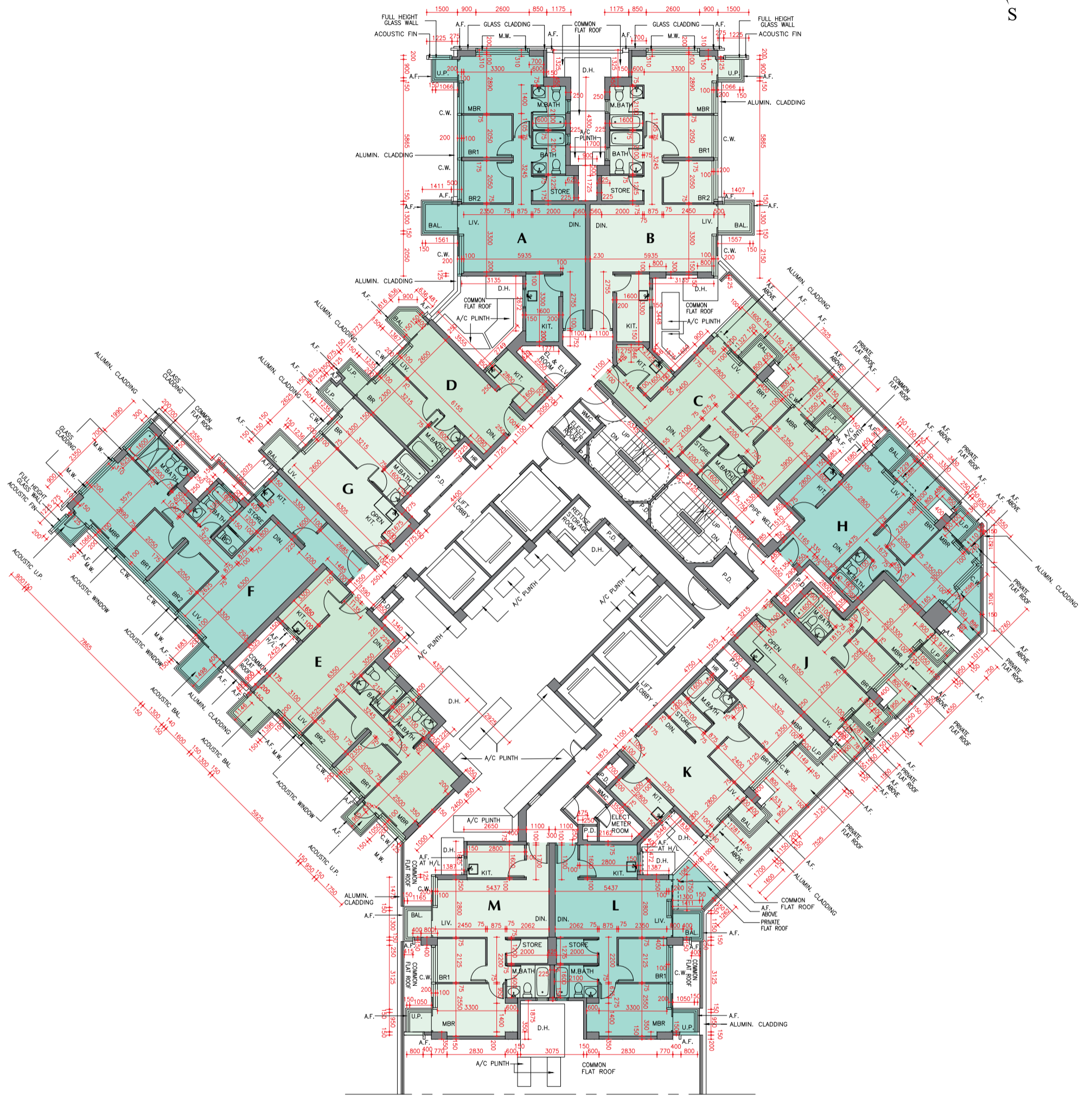
Notes:

1. The dimensions in the floor plans are all structural dimensions in millimetre.
2. Please refer to pages 26 and 27 of this sales brochure for legend of the terms and abbreviations in studying the floor plans.

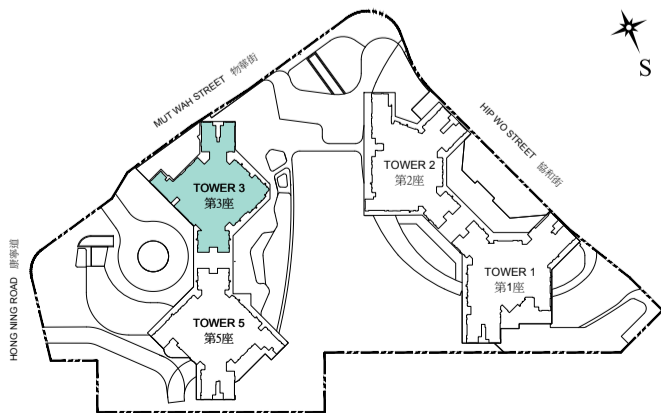
備註：

1. 樓面平面圖之尺規所列數字為以毫米標示之建築結構尺寸。
2. 請參閱本售樓說明書第26及27頁之圖例以協助閱讀樓面平面圖之名稱和簡稱。

TOWER 3 6/F FLOOR PLAN
第3座 6樓樓面平面圖



KEY PLAN 指示圖



Scale : 0 5M(米)
比例 :

FLOOR PLANS OF RESIDENTIAL PROPERTIES IN THE PHASE 期數的住宅物業的樓面平面圖

TOWER 3 7/F - 12/F, 15/F - 23/F, 25/F - 26/F, 28/F - 33/F, 35/F - 43/F AND 45/F - 51/F FLOOR PLAN 第3座 7樓至12樓，15樓至23樓，25樓至26樓，28樓至33樓，35樓至43樓及45樓至51樓樓面平面圖

	Tower 座	Unit 單位													
		Floor 樓層	A	B	C	D	E	F	G	H	J	K	L	M	
Floor-to-floor height of each residential property (mm) 每個住宅物業的層與層之間的高度(毫米)	3	7/F - 12/F, 15/F - 23/F, 25/F, 28/F - 33/F, 35/F - 43/F and 45/F - 50/F	2775, 2800, 2900, 3150		2775, 2800, 3150		2775, 2800, 2900, 3150	2775, 2800, 3100, 3150		2775, 2800, 3150				2775, 2800, 2900, 3150	
The thickness of the floor slabs (excluding plaster) of each residential property (mm) 每個住宅物業的樓板的厚度(不包括灰泥)(毫米)		7樓至12樓， 15樓至23樓， 25樓，28樓至33樓， 35樓至43樓及 45樓至50樓	150, 400		150		150, 400		150					150, 450	
Floor-to-floor height of each residential property (mm) 每個住宅物業的層與層之間的高度(毫米)		26/F	3150												
The thickness of the floor slabs (excluding plaster) of each residential property (mm) 每個住宅物業的樓板的厚度(不包括灰泥)(毫米)		26樓	150, 400		150		150, 400		150					150, 450	
Floor-to-floor height of each residential property (mm) 每個住宅物業的層與層之間的高度(毫米)		51/F	2775, 2800, 2900, 3150		2775, 2800, 3150		2775, 2800, 2900, 3150	2775, 2800, 2900, 3100, 3150		2775, 2800, 2900, 3150		2775, 2800, 2900, 3100, 3150		2775, 2800, 2900, 3150	
The thickness of the floor slabs (excluding plaster) of each residential property (mm) 每個住宅物業的樓板的厚度(不包括灰泥)(毫米)		51樓	150, 400		150		150, 400		150					150, 450	

The internal areas of the residential properties on the upper floors will generally be slightly larger than those on the lower floors because of the reducing thickness of the structural walls on the upper floors.

因住宅物業的較高樓層的結構牆的厚度遞減，較高樓層的內部面積，一般比較低樓層的內部面積稍大。

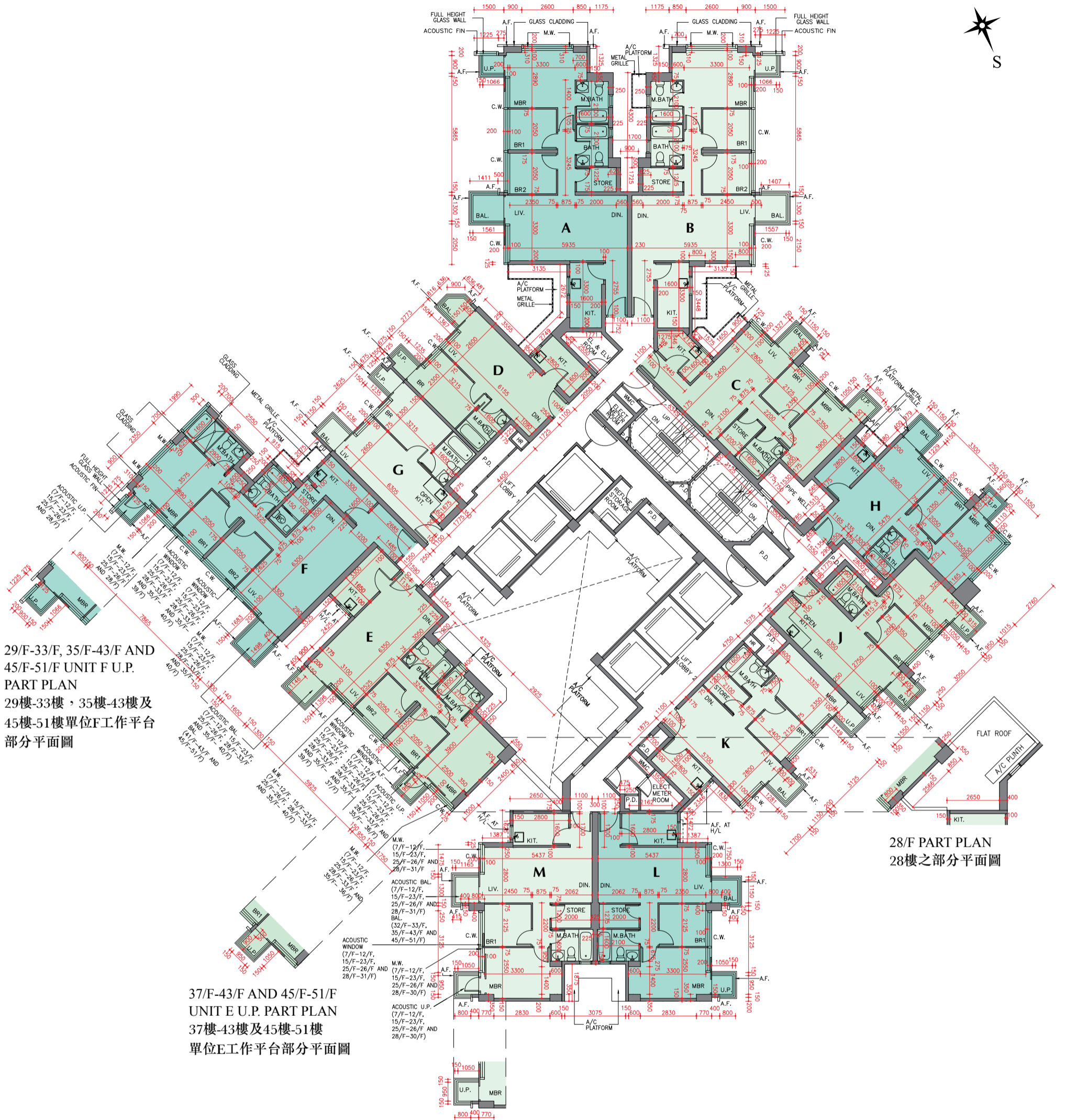
Notes:

- The dimensions in the floor plans are all structural dimensions in millimetre.
- Please refer to pages 26 and 27 of this sales brochure for legend of the terms and abbreviations in studying the floor plans.
- 13/F, 14/F, 24/F, 34/F and 44/F are omitted. 27/F is refuge floor.

備註：

- 樓面平面圖之尺規所列數字為以毫米標示之建築結構尺寸。
- 請參閱本售樓說明書第26及27頁之圖例以協助閱讀樓面平面圖之名稱和簡稱。
- 不設13樓、14樓、24樓、34樓及44樓。27樓為庇護層。

TOWER 3 7/F - 12/F, 15/F - 23/F, 25/F - 26/F, 28/F - 33/F, 35/F - 43/F AND 45/F - 51/F FLOOR PLAN
第3座 7樓至12樓，15樓至23樓，25樓至26樓，28樓至33樓，35樓至43樓及45樓至51樓樓面平面圖



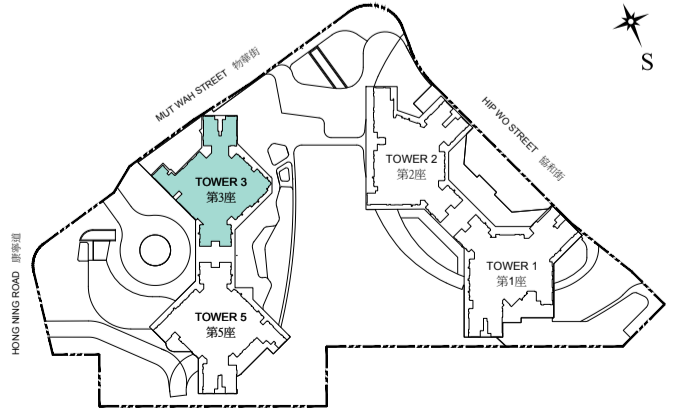
29/F-33/F, 35/F-43/F AND 45/F-51/F UNIT F U.P. PART PLAN
 29樓-33樓，35樓-43樓及45樓-51樓單位F工作平台部分平面圖

28/F PART PLAN
 28樓之部分平面圖

37/F-43/F AND 45/F-51/F UNIT E U.P. PART PLAN
 37樓-43樓及45樓-51樓單位E工作平台部分平面圖

31/F-33/F, 35/F-43/F AND 45/F-51/F UNIT M U.P. PART PLAN
 31樓-33樓，35樓-43樓及45樓-51樓單位M工作平台部分平面圖

KEY PLAN 指示圖



Scale : 0 5M(米)
 比例 :

FLOOR PLANS OF RESIDENTIAL PROPERTIES IN THE PHASE 期數的住宅物業的樓面平面圖

TOWER 3 52/F FLOOR PLAN 第3座 52樓樓面平面圖

	Tower 座	Unit 單位		A	B	C	D	E	H	L	M
		Floor 樓層									
Floor-to-floor height of each residential property (mm) 每個住宅物業的層與層之間的高度(毫米)	3	52/F		3300							
The thickness of the floor slabs (excluding plaster) of each residential property (mm) 每個住宅物業的樓板的厚度(不包括灰泥)(毫米)		52樓		175, 400		175, 200, 225, 300	175	175, 200, 225	175, 450		

The internal areas of the residential properties on the upper floors will generally be slightly larger than those on the lower floors because of the reducing thickness of the structural walls on the upper floors.

因住宅物業的較高樓層的結構牆的厚度遞減，較高樓層的內部面積，一般比較低樓層的內部面積稍大。

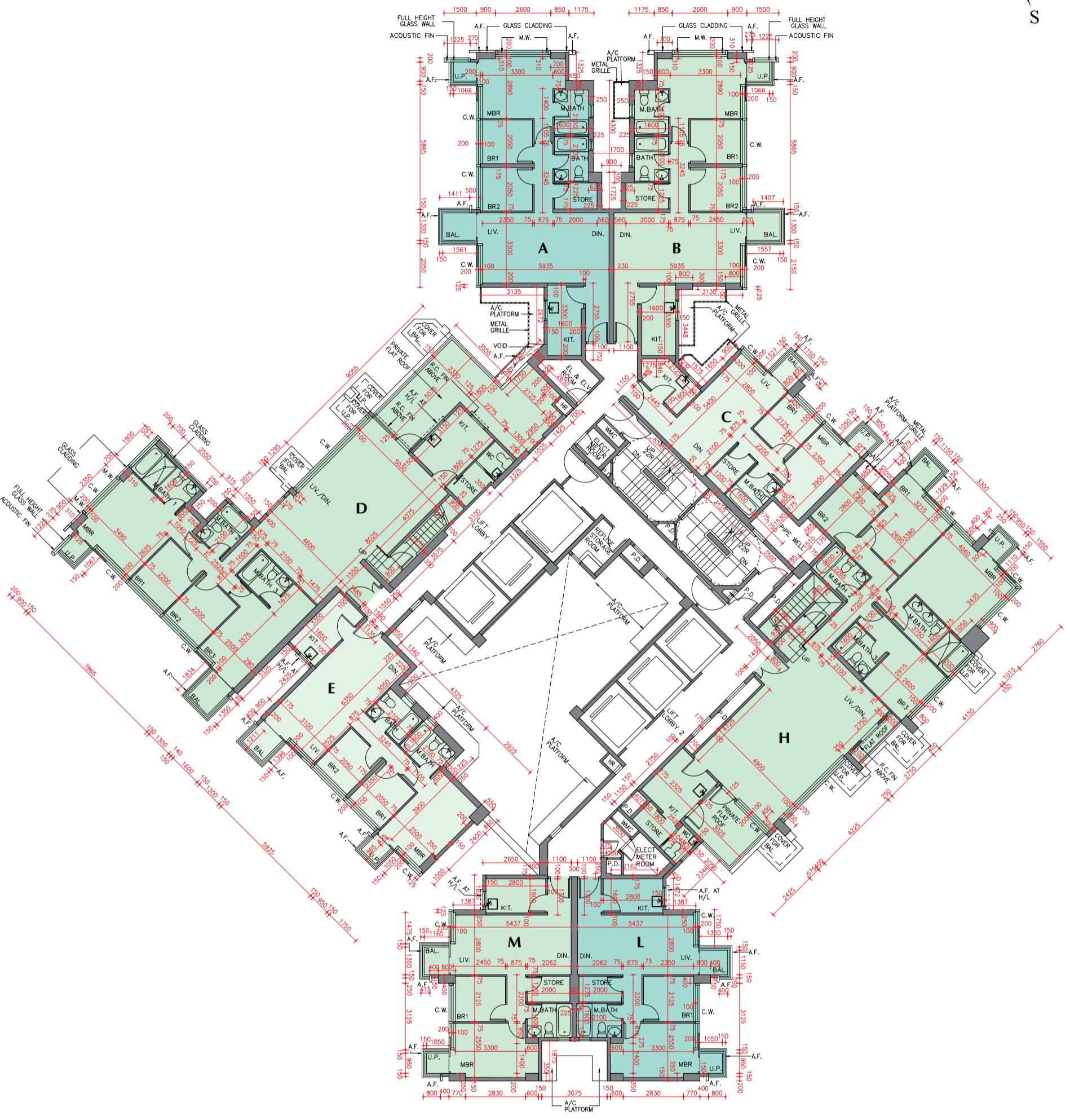
Notes:

1. The dimensions in the floor plans are all structural dimensions in millimetre.
2. Please refer to pages 26 and 27 of this sales brochure for legend of the terms and abbreviations in studying the floor plans.

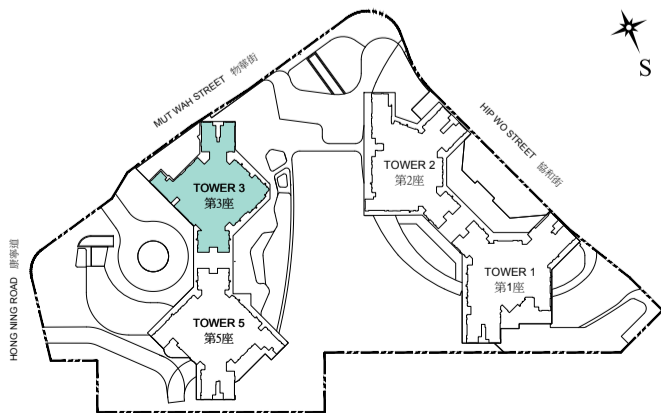
備註：

1. 樓面平面圖之尺規所列數字為以毫米標示之建築結構尺寸。
2. 請參閱本售樓說明書第26及27頁之圖例以協助閱讀樓面平面圖之名稱和簡稱。

TOWER 3 52/F FLOOR PLAN
第3座 52樓樓面平面圖



KEY PLAN 指示圖



Scale : 0 5M(米)
比例 :

FLOOR PLANS OF RESIDENTIAL PROPERTIES IN THE PHASE 期數的住宅物業的樓面平面圖

TOWER 3 ROOF FLOOR PLAN 第3座 天台樓面平面圖

	Tower 座	Unit 單位		A	B	C	D	E	H	L	M
		Floor 樓層									
Floor-to-floor height of each residential property (mm) 每個住宅物業的層與層之間的高度(毫米)	3	Roof		Not Applicable 不適用							
The thickness of the floor slabs (excluding plaster) of each residential property (mm) 每個住宅物業的樓板的厚度(不包括灰泥)(毫米)		天台		Not Applicable 不適用							

The internal areas of the residential properties on the upper floors will generally be slightly larger than those on the lower floors because of the reducing thickness of the structural walls on the upper floors.

因住宅物業的較高樓層的結構牆的厚度遞減，較高樓層的內部面積，一般比較低樓層的內部面積稍大。

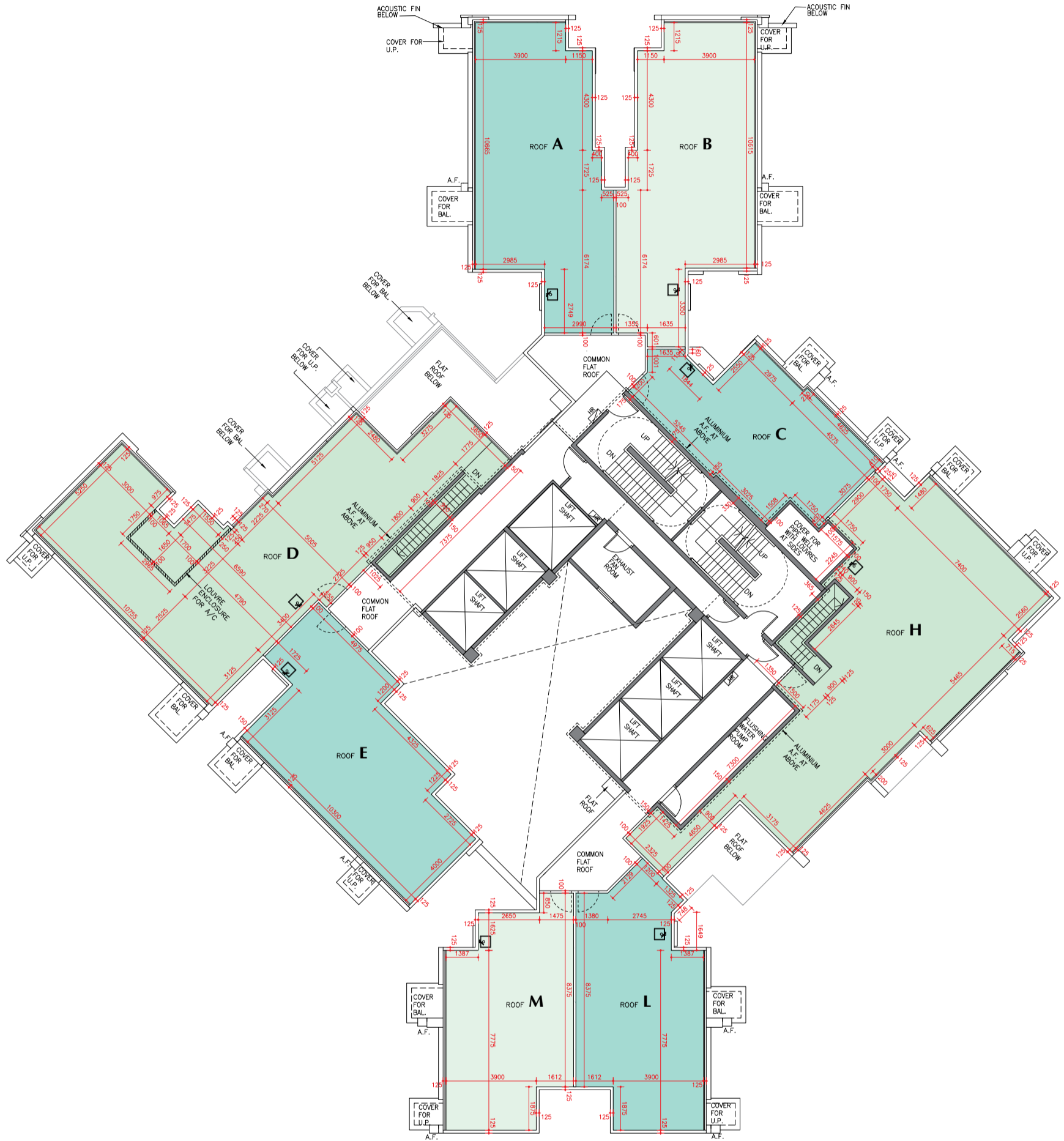
Notes:

1. The dimensions in the floor plans are all structural dimensions in millimetre.
2. Please refer to pages 26 and 27 of this sales brochure for legend of the terms and abbreviations in studying the floor plans.

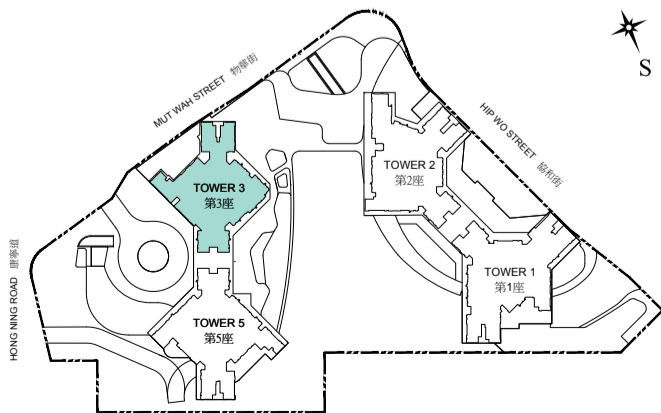
備註：

1. 樓面平面圖之尺規所列數字為以毫米標示之建築結構尺寸。
2. 請參閱本售樓說明書第26及27頁之圖例以協助閱讀樓面平面圖之名稱和簡稱。

TOWER 3 ROOF FLOOR PLAN
第3座 天台樓面平面圖



KEY PLAN 指示圖



Scale : 0 5M(米)
比例 :

FLOOR PLANS OF RESIDENTIAL PROPERTIES IN THE PHASE 期數的住宅物業的樓面平面圖

TOWER 5 6/F FLOOR PLAN 第5座 6樓樓面平面圖

	Tower 座	Unit 單位		A	B	C	D	E	F	G	H	J	K	L	M	N
		Floor 樓層														
Floor-to-floor height of each residential property (mm) 每個住宅物業的層與層之間的高度(毫米)	5	6/F		2775, 2800, 2900, 3100, 3150	2775, 2800, 3150				2775, 2800, 2900, 3150, 3350				2775, 2800, 3150			2775, 2800, 2900, 3150
The thickness of the floor slabs (excluding plaster) of each residential property (mm) 每個住宅物業的樓板的厚度(不包括灰泥)(毫米)		6樓		150, 400	150				150, 400				150		150, 400	

The internal areas of the residential properties on the upper floors will generally be slightly larger than those on the lower floors because of the reducing thickness of the structural walls on the upper floors.

因住宅物業的較高樓層的結構牆的厚度遞減，較高樓層的內部面積，一般比較低樓層的內部面積稍大。

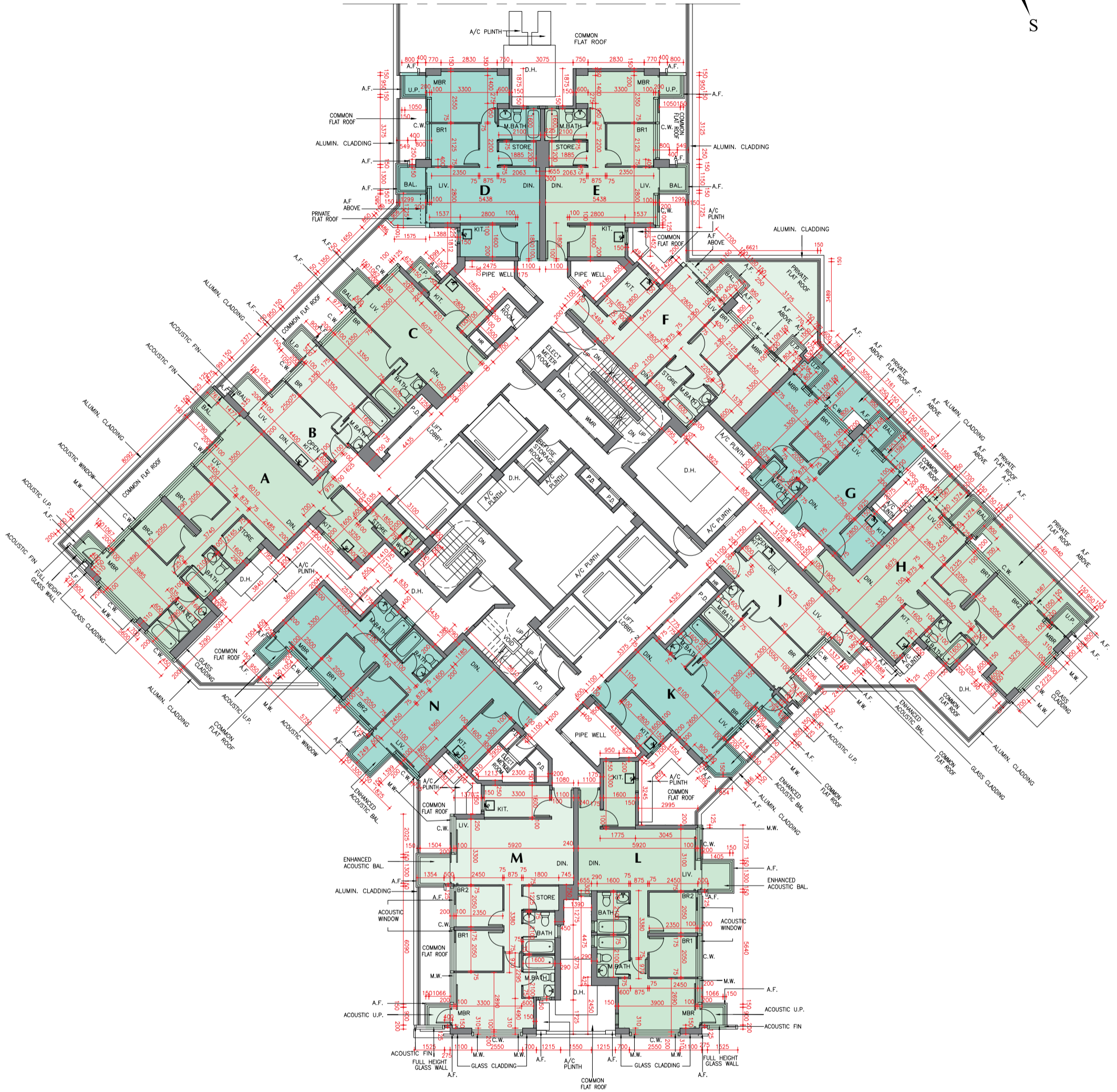
Notes:

1. The dimensions in the floor plans are all structural dimensions in millimetre.
2. Please refer to pages 26 and 27 of this sales brochure for legend of the terms and abbreviations in studying the floor plans.

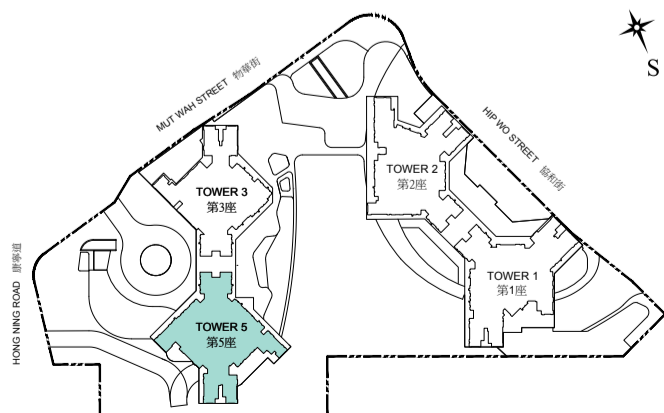
備註：

1. 樓面平面圖之尺規所列數字為以毫米標示之建築結構尺寸。
2. 請參閱本售樓說明書第26及27頁之圖例以協助閱讀樓面平面圖之名稱和簡稱。

TOWER 5 6/F FLOOR PLAN
第5座 6樓樓面平面圖



KEY PLAN 指示圖



Scale : 0 5M(米)
比例 :

FLOOR PLANS OF RESIDENTIAL PROPERTIES IN THE PHASE 期數的住宅物業的樓面平面圖

TOWER 5 7/F - 12/F, 15/F - 21/F FLOOR PLAN 第5座 7樓至12樓，15樓至21樓樓面平面圖

	Tower 座	Unit 單位 Floor 樓層	A	B	C	D	E	F	G	H	J	K	L	M	N
			Floor-to-floor height of each residential property (mm) 每個住宅物業的層與層之間的高度(毫米)	5	7/F - 12/F and 15/F - 21/F	2775, 2800, 2900, 3100, 3150	2775, 2800, 3150				2775, 2800, 2900, 3150			2775, 2800, 3150	
The thickness of the floor slabs (excluding plaster) of each residential property (mm) 每個住宅物業的樓板的厚度(不包括灰泥)(毫米)	7樓至12樓及 15樓至21樓	150, 400	150					150, 400			150			150, 400	

The internal areas of the residential properties on the upper floors will generally be slightly larger than those on the lower floors because of the reducing thickness of the structural walls on the upper floors.

因住宅物業的較高樓層的結構牆的厚度遞減，較高樓層的內部面積，一般比較低樓層的內部面積稍大。

Notes:

1. The dimensions in the floor plans are all structural dimensions in millimetre.
2. Please refer to pages 26 and 27 of this sales brochure for legend of the terms and abbreviations in studying the floor plans.
3. 13/F and 14/F are omitted.

備註：

1. 樓面平面圖之尺規所列數字為以毫米標示之建築結構尺寸。
2. 請參閱本售樓說明書第26及27頁之圖例以協助閱讀樓面平面圖之名稱和簡稱。
3. 不設13樓及14樓。

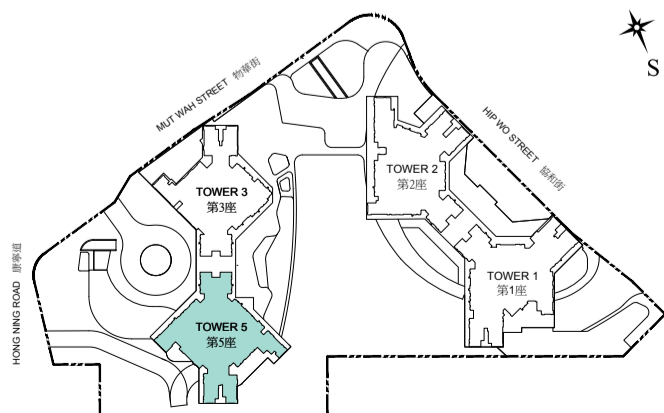
TOWER 5 7/F - 12/F, 15/F - 21/F FLOOR PLAN
 第5座 7樓至12樓，15樓至21樓樓面平面圖



7/F-9/F UNIT B U.P. PART PLAN
 7樓-9樓單位B工作平台部分平面圖



KEY PLAN 指示圖



Scale : 0 5M(米)
 比例 :

FLOOR PLANS OF RESIDENTIAL PROPERTIES IN THE PHASE 期數的住宅物業的樓面平面圖

TOWER 5 22/F - 23/F, 25/F - 26/F, 28/F - 33/F, 35/F - 43/F AND 45/F - 50/F FLOOR PLAN 第5座 22樓至23樓，25樓至26樓，28樓至33樓，35樓至43樓及45樓至50樓樓面平面圖

	Tower 座	Unit 單位 Floor 樓層	A	C	D	E	F	G	H	J	K	L	M	N
			Floor-to-floor height of each residential property (mm) 每個住宅物業的層與層之間的高度(毫米)	5	22/F 22樓	2775, 2800, 2900, 3100, 3150				2775, 2800, 2900, 3150			2775, 2800, 3150	
The thickness of the floor slabs (excluding plaster) of each residential property (mm) 每個住宅物業的樓板的厚度(不包括灰泥)(毫米)	23/F, 25/F, 28/F - 33/F, 35/F - 43/F and 45/F - 49/F 23樓，25樓， 28樓至33樓， 35樓至43樓及 45樓至49樓	150, 400	150				150, 400			150			150, 400	
Floor-to-floor height of each residential property (mm) 每個住宅物業的層與層之間的高度(毫米)	5	26/F 26樓	2775, 2800, 2900, 3100, 3150				2775, 2800, 2900, 3150			2775, 2800, 3150			2775, 2800, 2900, 3150	
The thickness of the floor slabs (excluding plaster) of each residential property (mm) 每個住宅物業的樓板的厚度(不包括灰泥)(毫米)		26/F 26樓	150, 400	150			150, 400			150			150, 450	
Floor-to-floor height of each residential property (mm) 每個住宅物業的層與層之間的高度(毫米)	5	50/F 50樓	3075, 3100, 3200, 3400, 3450				3075, 3100, 3200, 3450			3150				
The thickness of the floor slabs (excluding plaster) of each residential property (mm) 每個住宅物業的樓板的厚度(不包括灰泥)(毫米)		50樓	150, 250, 400	150			150, 400		175, 400	175			175, 400	

The internal areas of the residential properties on the upper floors will generally be slightly larger than those on the lower floors because of the reducing thickness of the structural walls on the upper floors.

因住宅物業的較高樓層的結構牆的厚度遞減，較高樓層的內部面積，一般比較低樓層的內部面積稍大。

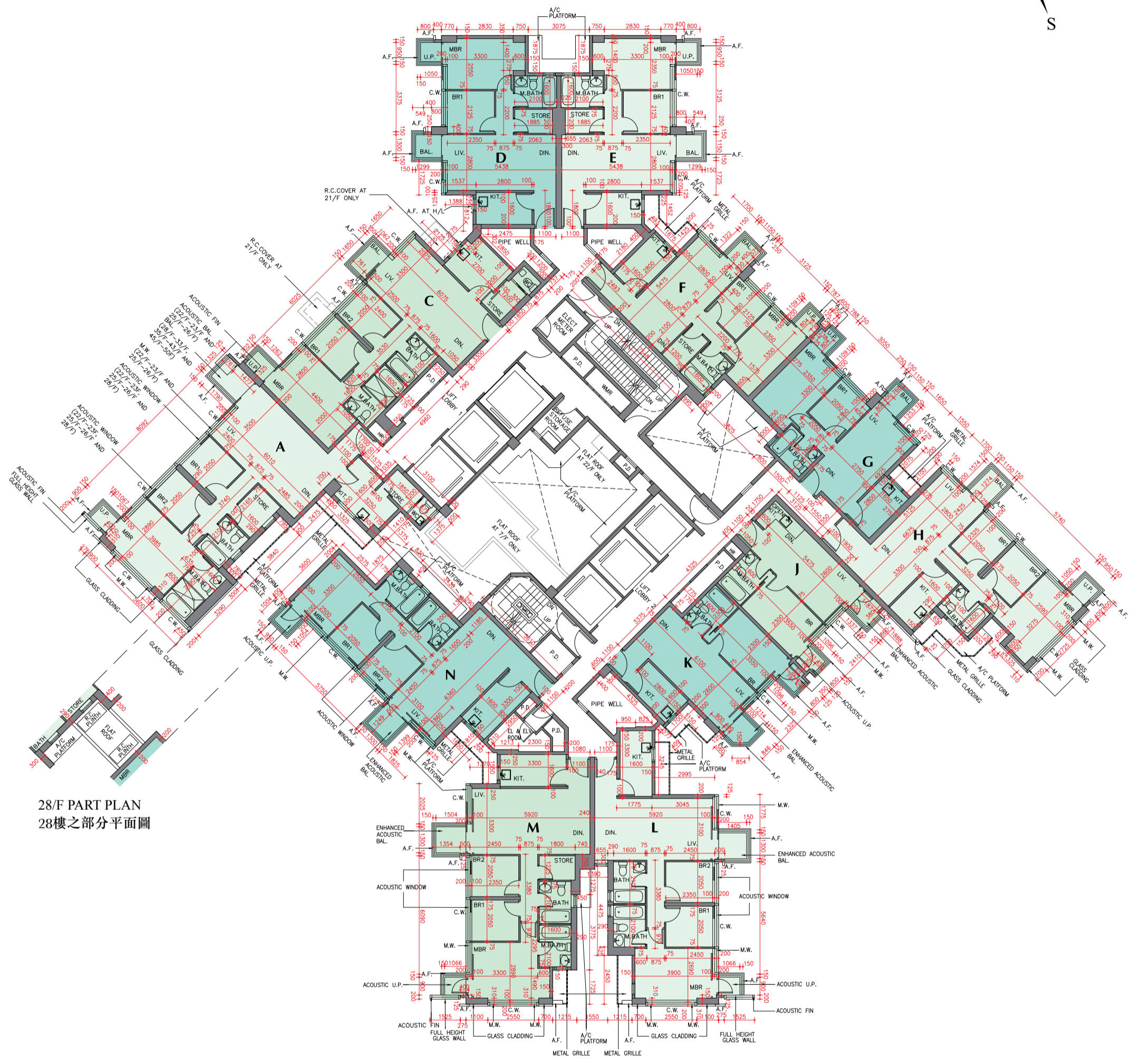
Notes:

- The dimensions in the floor plans are all structural dimensions in millimetre.
- Please refer to pages 26 and 27 of this sales brochure for legend of the terms and abbreviations in studying the floor plans.
- 24/F, 34/F and 44/F are omitted. 27/F is refuge floor.

備註：

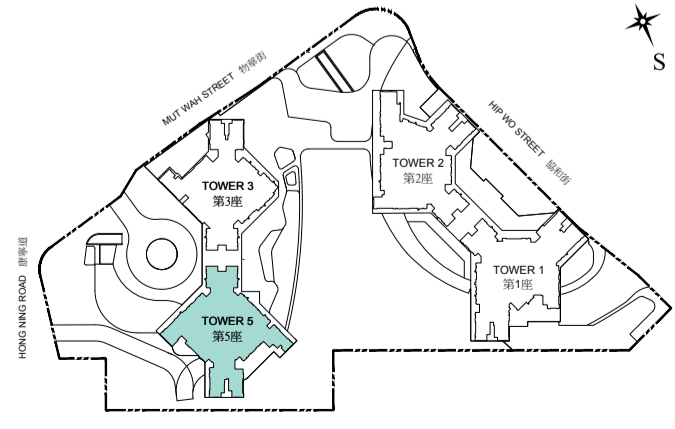
- 樓面平面圖之尺規所列數字為以毫米標示之建築結構尺寸。
- 請參閱本售樓說明書第26及27頁之圖例以協助閱讀樓面平面圖之名稱和簡稱。
- 不設24樓、34樓及44樓。27樓為庇護層。

TOWER 5 22/F - 23/F, 25/F - 26/F, 28/F - 33/F, 35/F - 43/F AND 45/F - 50/F FLOOR PLAN
 第5座 22樓至23樓, 25樓至26樓, 28樓至33樓, 35樓至43樓及45樓至50樓樓面平面圖



28/F PART PLAN
 28樓之部分平面圖

KEY PLAN 指示圖



Scale : 0 5M(米)
 比例 :

FLOOR PLANS OF RESIDENTIAL PROPERTIES IN THE PHASE 期數的住宅物業的樓面平面圖

TOWER 5 51/F FLOOR PLAN 第5座 51樓樓面平面圖

	Tower 座	Unit 單位		A	D	E	F	G	H	J	K	L	M	N
		Floor 樓層												
Floor-to-floor height of each residential property (mm) 每個住宅物業的層與層之間的高度(毫米)	5	51/F		3300				Not Applicable 不適用						
The thickness of the floor slabs (excluding plaster) of each residential property (mm) 每個住宅物業的樓板的厚度(不包括灰泥)(毫米)		51樓		175, 200, 225, 400	175, 400			Not Applicable 不適用						

The internal areas of the residential properties on the upper floors will generally be slightly larger than those on the lower floors because of the reducing thickness of the structural walls on the upper floors.

因住宅物業的較高樓層的結構牆的厚度遞減，較高樓層的內部面積，一般比較低樓層的內部面積稍大。

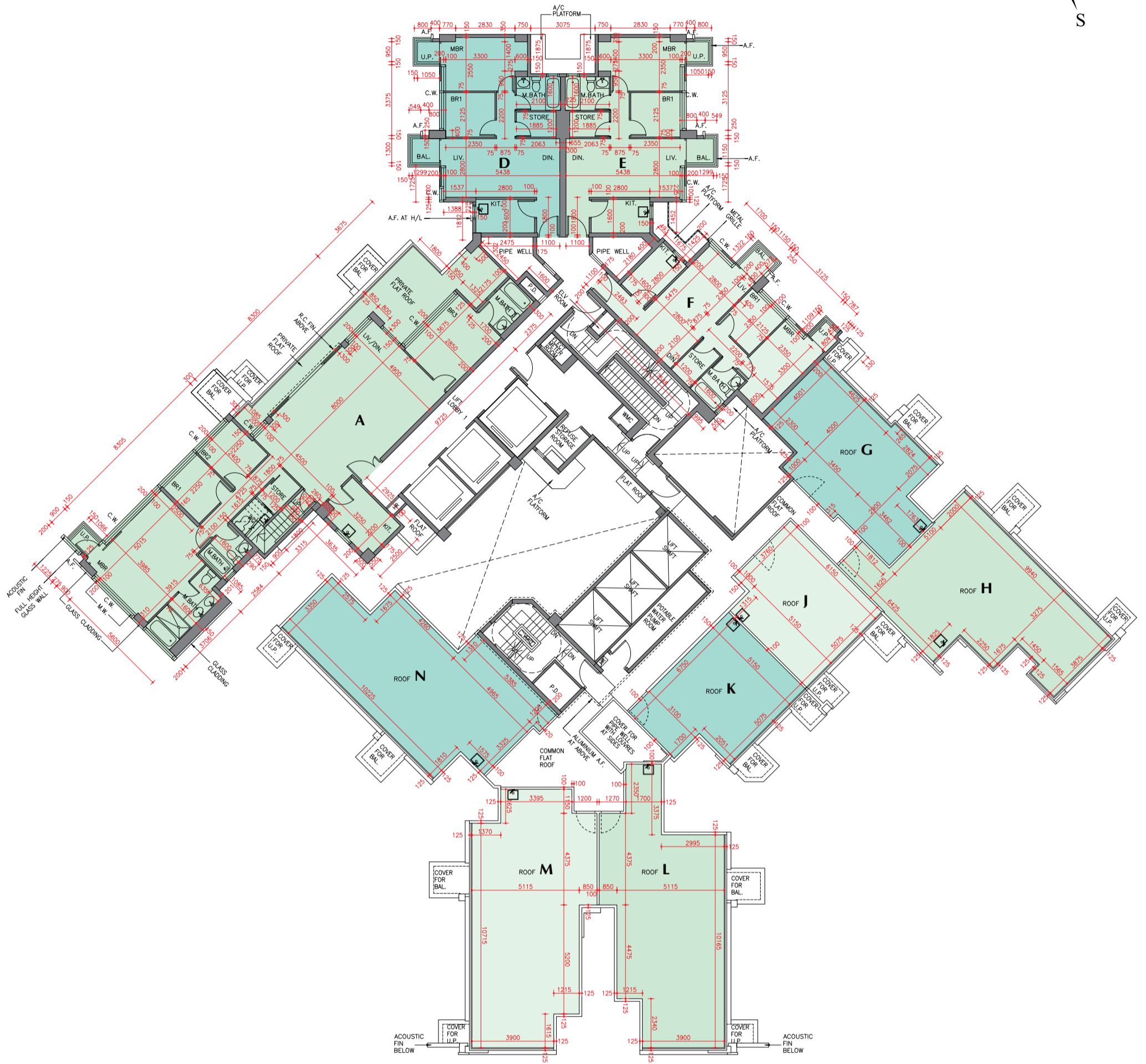
Notes:

1. The dimensions in the floor plans are all structural dimensions in millimetre.
2. Please refer to pages 26 and 27 of this sales brochure for legend of the terms and abbreviations in studying the floor plans.

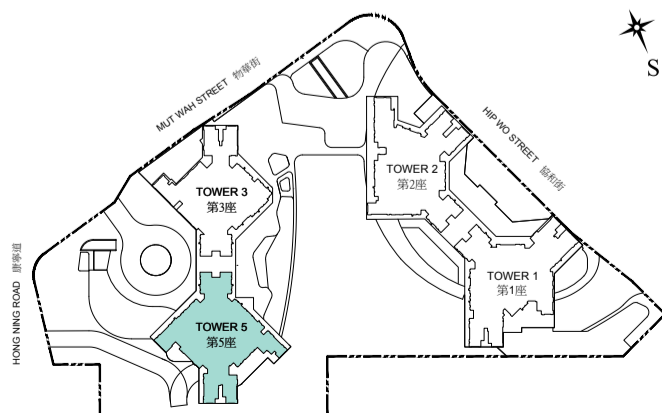
備註：

1. 樓面平面圖之尺規所列數字為以毫米標示之建築結構尺寸。
2. 請參閱本售樓說明書第26及27頁之圖例以協助閱讀樓面平面圖之名稱和簡稱。

TOWER 5 51/F FLOOR PLAN
第5座 51樓樓面平面圖



KEY PLAN 指示圖



Scale : 0 5M(米)
比例 :

FLOOR PLANS OF RESIDENTIAL PROPERTIES IN THE PHASE 期數的住宅物業的樓面平面圖

TOWER 5 ROOF FLOOR PLAN 第5座 天台樓面平面圖

	Tower 座	Unit 單位	A	D	E	F
		Floor 樓層				
Floor-to-floor height of each residential property (mm) 每個住宅物業的層與層之間的高度(毫米)	5	Roof	Not Applicable 不適用			
The thickness of the floor slabs (excluding plaster) of each residential property (mm) 每個住宅物業的樓板的厚度(不包括灰泥)(毫米)		天台	Not Applicable 不適用			

The internal areas of the residential properties on the upper floors will generally be slightly larger than those on the lower floors because of the reducing thickness of the structural walls on the upper floors.

因住宅物業的較高樓層的結構牆的厚度遞減，較高樓層的內部面積，一般比較低樓層的內部面積稍大。

Notes:

1. The dimensions in the floor plans are all structural dimensions in millimetre.
2. Please refer to pages 26 and 27 of this sales brochure for legend of the terms and abbreviations in studying the floor plans.

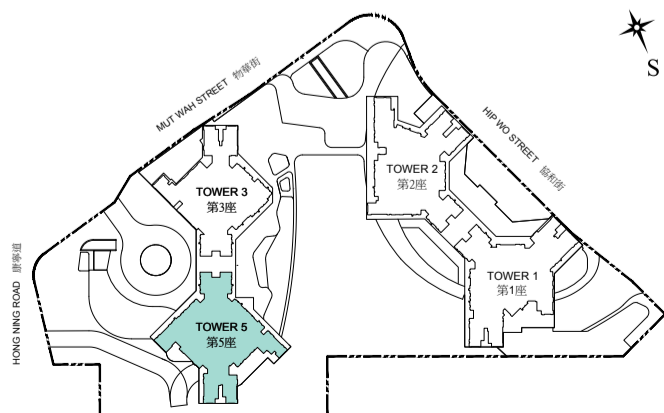
備註：

1. 樓面平面圖之尺規所列數字為以毫米標示之建築結構尺寸。
2. 請參閱本售樓說明書第26及27頁之圖例以協助閱讀樓面平面圖之名稱和簡稱。

TOWER 5 ROOF FLOOR PLAN
第5座 天台樓面平面圖



KEY PLAN 指示圖



Scale : 0 5M(米)
比例 :