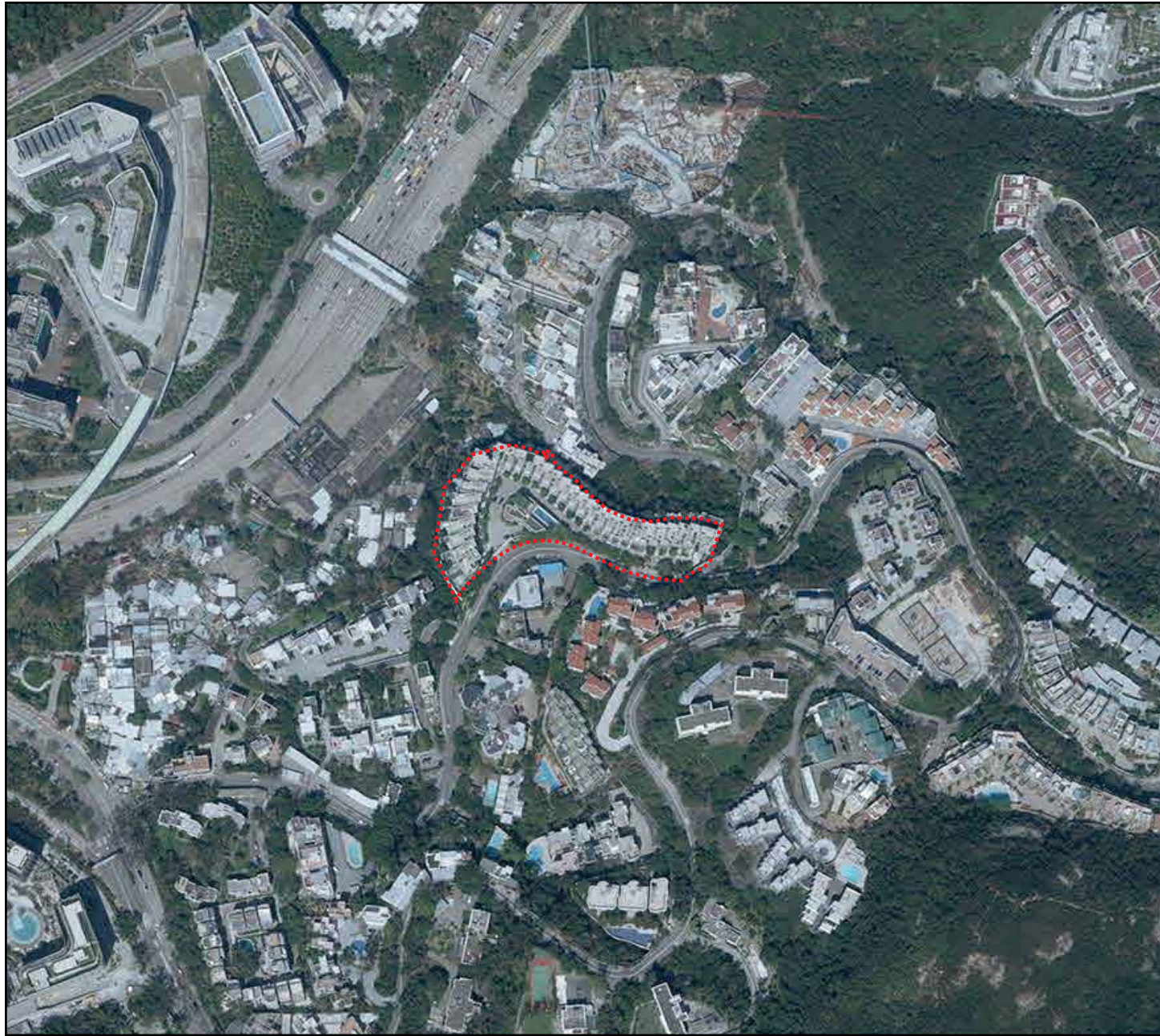



AERIAL PHOTOGRAPH OF THE DEVELOPMENT

發展項目的鳥瞰照片



Survey and Mapping Office, Lands Department, The Government of
HKSAR © Copyright reserved – reproduction by permission only.
香港特別行政區政府地政總署©版權所有，未經許可，不得翻印。

 Location of the Development
發展項目的位置

Adopted from part of the aerial photo taken by the Survey and Mapping Office of the Lands Department at a flying height of 6,900 feet, photo No. E046825C, dated 5 October 2018.

摘錄自地政總署在6,900呎的飛行高度拍攝之鳥瞰照片，照片編號E046825C，飛行日期：2018年10月5日。

Note :

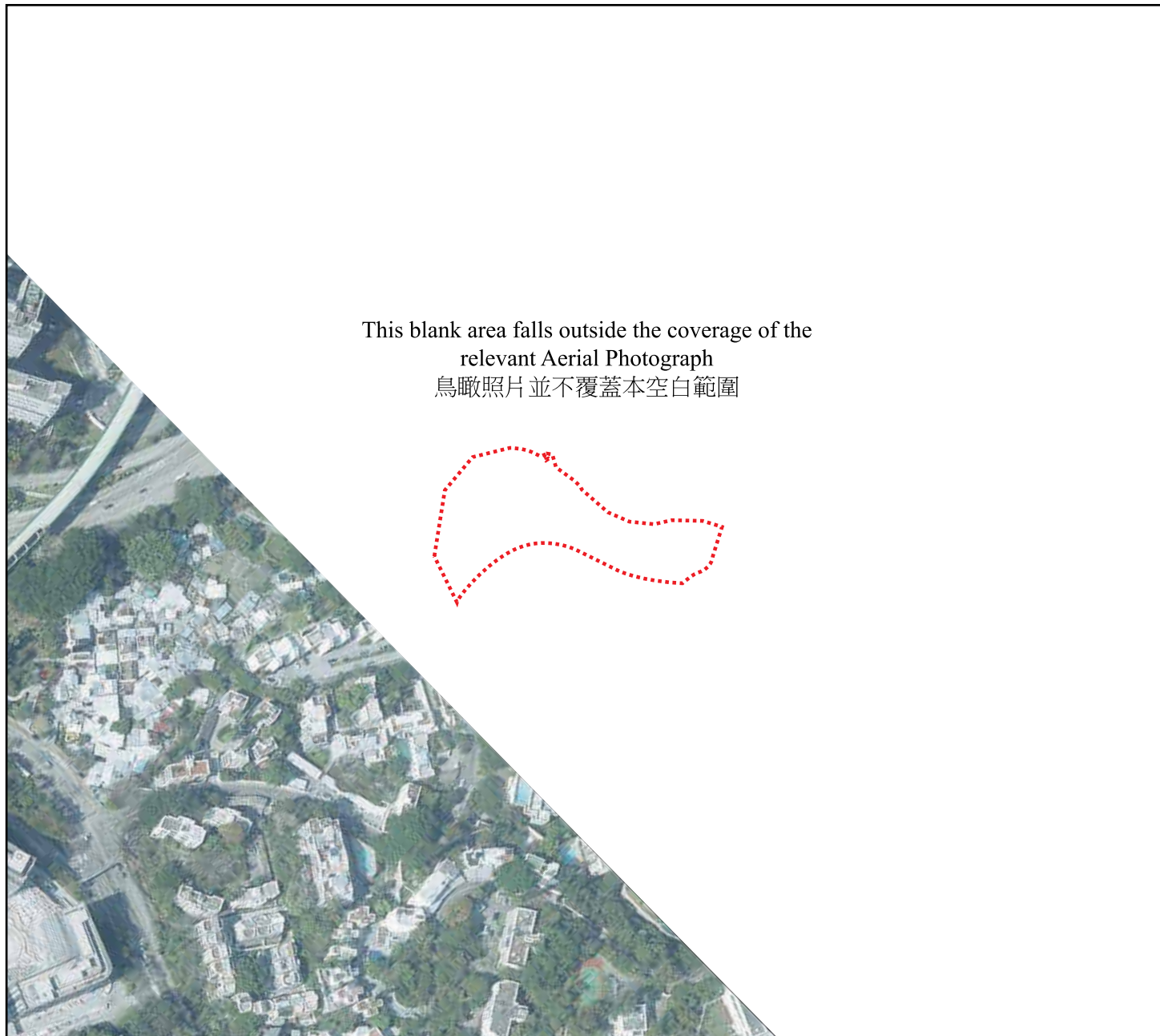
1. Copy of the aerial photograph of the Development is available for free inspection at the sales office during opening hours.
2. The aerial photograph may show more than the area required under the Residential Properties (First-hand Sales) Ordinance due to the technical reason that the boundary of the Development is irregular.

備註：


1. 發展項目的鳥瞰照片之副本可於售樓處開放時間內免費查閱。
2. 由於發展項目的邊界不規則的技術原因，此照片所顯示的範圍可能超過《一手住宅物業銷售條例》所規定的範圍。

AERIAL PHOTOGRAPH OF THE DEVELOPMENT

發展項目的鳥瞰照片



Survey and Mapping Office, Lands Department, The Government of HKSAR © Copyright reserved – reproduction by permission only.
香港特別行政區政府地政總署©版權所有，未經許可，不得翻印。

 Location of the Development
發展項目的位置

Adopted from part of the aerial photo taken by the Survey and Mapping Office of the Lands Department at a flying height of 6,000 feet, photo No. E034412C, dated 10 March 2018.

摘錄自地政總署在6,000呎的飛行高度拍攝之鳥瞰照片，照片編號E034412C，飛行日期：2018年3月10日。

Note :

1. Copy of the aerial photograph of the Development is available for free inspection at the sales office during opening hours.
2. The aerial photograph may show more than the area required under the Residential Properties (First-hand Sales) Ordinance due to the technical reason that the boundary of the Development is irregular.

備註：

1. 發展項目的鳥瞰照片之副本可於售樓處開放時間內免費查閱。
2. 由於發展項目的邊界不規則的技術原因，此照片所顯示的範圍可能超過《一手住宅物業銷售條例》所規定的範圍。