

Floor plans of residential properties in the development

發展項目的住宅物業的樓面平面圖

Remarks applicable to the floor plans in this section:

1. There are architectural features, aluminium cladding, metal grilles and/or exposed pipes on the external walls of some of the floors. For details, please refer to the latest approved building plans and/or approved drainage plans and/or other relevant plans.
2. Common pipes exposed and /or enclosed in cladding are located at/adjacent to the balcony and/or external wall of some residential properties and/or some of the flat roofs and/or air-conditioner platform of the Development. For details, please refer to the latest approved building plans and/or approved drainage plans and/or other relevant plans.
3. There are sunken slabs for mechanical and electrical services and/or ceiling/bulkheads for the air-conditioning fittings and/or mechanical and electrical services at some residential properties.
4. There are exposed pipes installed in some bathrooms.
5. Balconies, enhanced acoustic balconies, utility platforms and maintenance utility platforms are non-enclosed areas.
6. Symbols of fittings and fitments such as sink, water closet, shower area, sink counter and stove etc. in the floor plans are prepared based on the latest approved building plans and are for general indication only.
7. The floor-to-floor height of each residential property refers to the height between the top surface of the structural slab of a floor and the top surface of the structural slab of its intermediate upper floor.

適用於本節之樓面平面圖之備註:

1. 部分樓層外牆範圍設有建築裝飾、鋁覆蓋板、金屬格柵及/或外露喉管，詳細資料請參考最新經批准的建築圖則及/或經批准的排水設施圖則及/或其他相關圖則。
2. 部分住宅物業的露台及/或外牆及/或發展項目的部份平台及/或空調機平台上/附近設有外露及/或外牆覆蓋板內藏之公用喉管，詳細資料請參考最新經批准的建築圖則及/或經批准的排水設施圖則及/或其他相關圖則。
3. 部分住宅物業有用以安裝機電設備的跌級樓板及/或用以裝置空調裝備及/或其他機電設備的天花板/裝飾橫樑。
4. 部分浴室內裝有外露喉管。
5. 露台、強效減音露台、工作平台及維修用工作平台為不可封閉的地方。
6. 樓面平面圖上的裝置符號，如洗滌盆、坐廁、淋浴間、洗滌盆櫃及煮食爐等乃按最新的經批准的建築圖則繪製，只作一般示意用途。
7. 每個住宅物業的層與層之間的高度指該樓層之石屎地台與上一層石屎地台面之高度距離。

Legend for floor plans of residential properties in the Development

發展項目的住宅物業的樓面平面圖圖例

AC = Aluminium Cladding 鋁覆蓋板

ACOUSTIC FIN = 隔音簷

ACOUSTIC WINDOW (TOP-HUNG TYPE) = 減音窗(上懸式)

A/C = Air-Conditioner Platform 空調機平台

AF = Architectural Feature 建築裝飾

B = Bathroom 浴室

BAL = Balcony 露台

BR = Bedroom 睡房

CFR = Common Flat Roof 公用平台

CW = Curtain Wall 幕牆

D = Down 下

EMR = Electrical Meter Room 電錶房

ENHANCED ACOUSTIC BALCONY = 強效減音露台

HR = Hose Reel 消防喉轆

LIFT = 升降機

LIFT LOBBY = 升降機大堂

LIV/DIN = Living/Dining Room 客/飯廳

MAINTENANCE UP = Maintenance Utility Platform 維修用工作平台

MBR = Master Bedroom 主人睡房

OPEN KIT = Open Kitchen 開放式廚房

PD = Pipe Duct 管道槽

PLANTER = 花槽

RS & MRR = Refuse Storage & Material Recovery Room 垃圾及物料回收室

U = Up 上

UP = Utility Platform 工作平台

VERTICAL ACOUSTIC FIN = 豎立隔音簷

WMC = Water Meter Cabinet 水錶箱

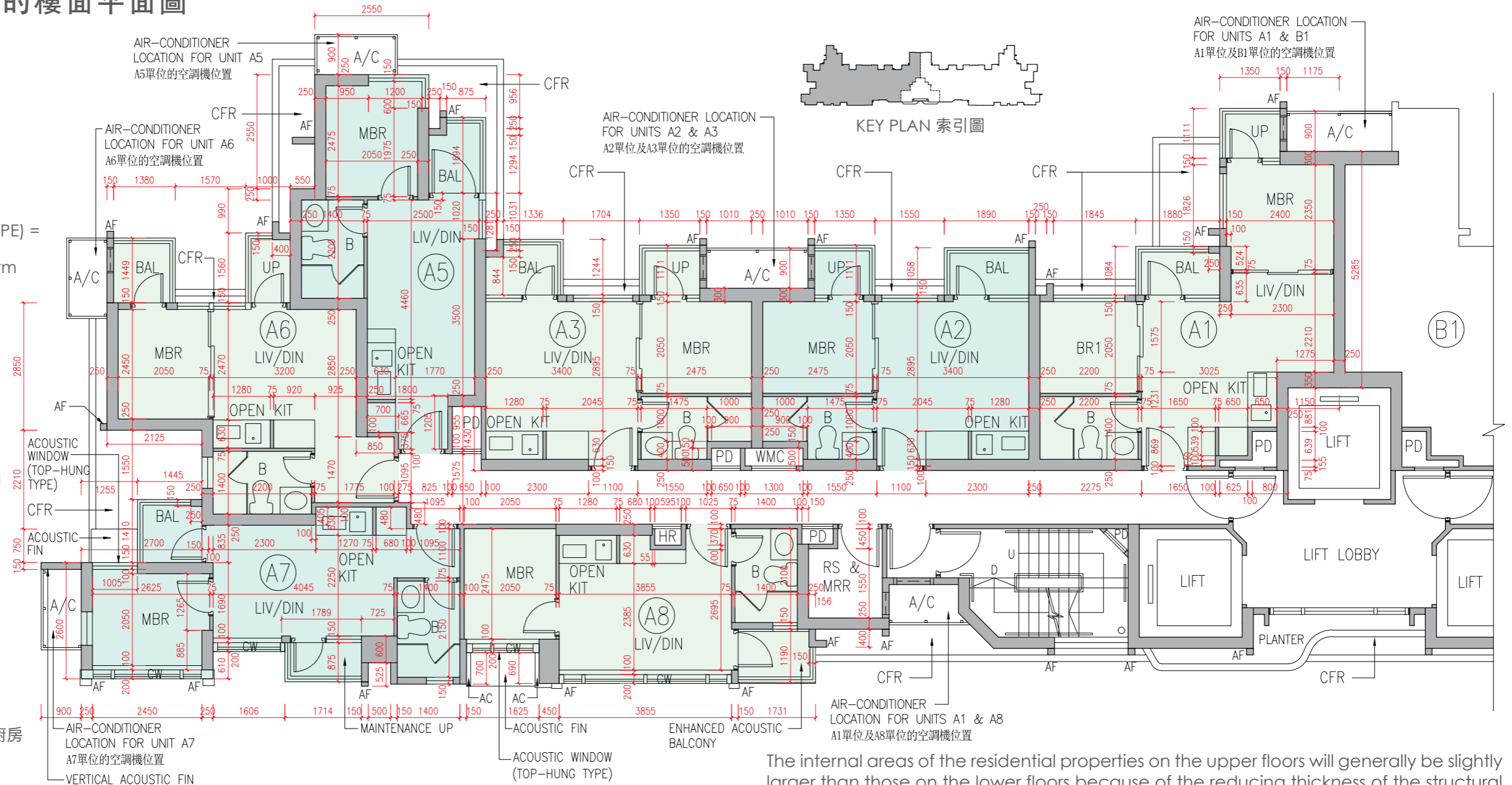
Floor plans of residential properties in the development

發展項目的住宅物業的樓面平面圖

8/F
8樓

LEGEND 圖例

- AC = Aluminium Cladding 鋁覆蓋板
- ACOUSTIC FIN = 隔音簷
- ACOUSTIC WINDOW (TOP-HUNG TYPE) = 減音窗(上懸式)
- A/C = Air-Conditioner Platform 空調機平台
- AF = Architectural Feature 建築裝飾
- B = Bathroom 浴室
- BAL = Balcony 露台
- BR = Bedroom 睡房
- CFR = Common Flat Roof 公用平台
- CW = Curtain Wall 幕牆
- D = Down 下
- EMR = Electrical Meter Room 電錶房
- ENHANCED ACOUSTIC BALCONY = 強效減音露台
- HR = Hose Reel 消防喉轆
- LIFT = 升降機
- LIFT LOBBY = 升降機大堂
- LIV/DIN = Living/Dining Room 客/飯廳
- MAINTENANCE UP = Maintenance Utility Platform 維修用工作平台
- MBR = Master Bedroom 主人睡房
- OPEN KIT = Open Kitchen 開放式廚房
- PD = Pipe Duct 管道槽
- PLANTER = 花槽
- RS & MRR = Refuse Storage & Material Recovery Room 垃圾及物料回收室
- U = Up 上
- UP = Utility Platform 工作平台
- VERTICAL ACOUSTIC FIN = 豎立隔音簷
- WMC = Water Meter Cabinet 水錶箱



The internal areas of the residential properties on the upper floors will generally be slightly larger than those on the lower floors because of the reducing thickness of the structural walls on the upper floors. (This statement does not apply to the residential properties in the Development because the design of the Development is such that the reducing thickness of the structural walls of residential properties on the upper floors does not increase the internal areas of those residential properties.)

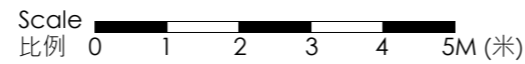
因住宅物業的較高樓層的結構牆的厚度遞減，較高樓層的內部面積，一般比較低樓層的內部面積稍大。(不適用於發展項目內的住宅物業，因為發展項目的設計是較高樓層的住宅物業的結構牆的厚度遞減不會增加該等住宅物業的內部面積。)

Remarks:

1. The dimensions in the floor plans are all structural dimensions in millimetre.
2. For details of the noise mitigation measures, please refer to the Relevant Information section in this sales brochure.
3. Aluminium cladding (being one of the noise mitigation measures - Sound Absorption Material) will be installed at the enhanced acoustic balcony of each Units A8 and B8 on 8/F. Please refer to "the Fittings, Finishes and Appliances" and "the Relevant Information" section(s) in this sales brochure for details.

備註:

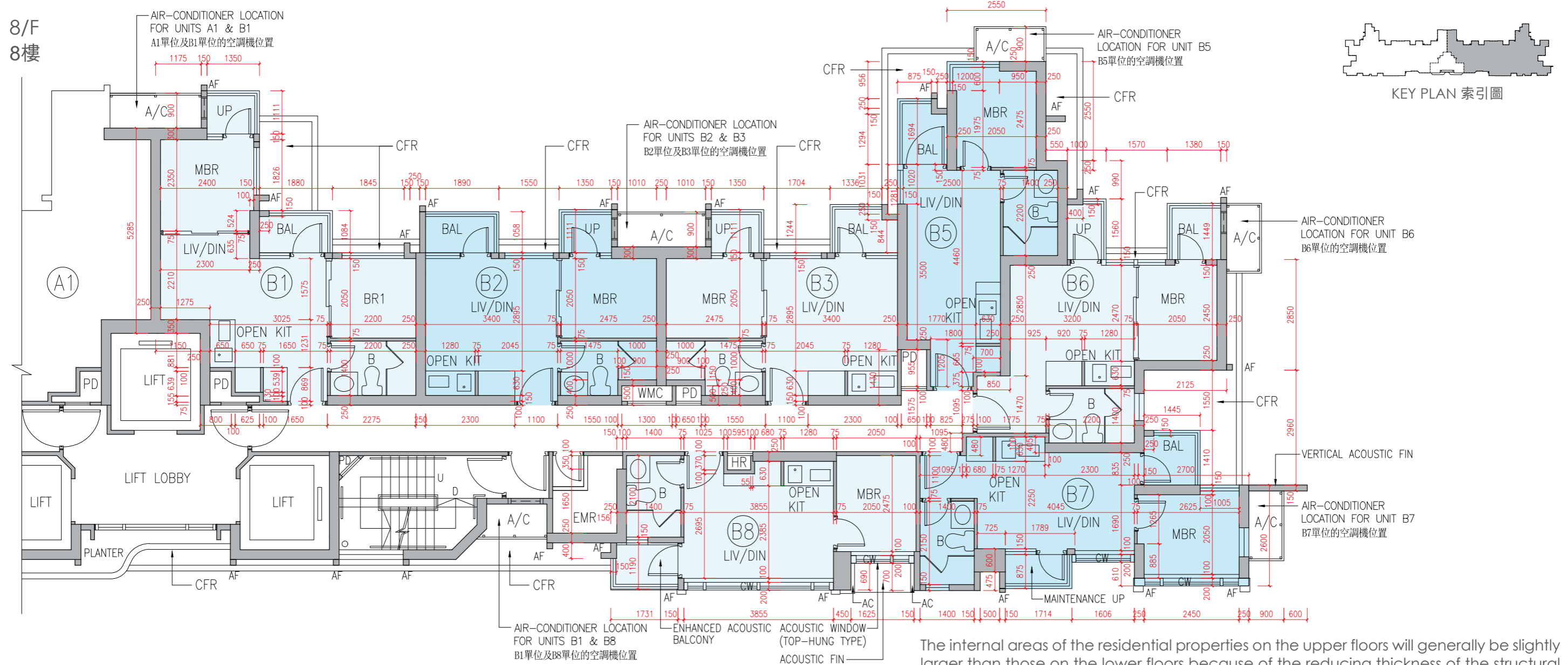
1. 樓面平面圖之尺規所列數字為以毫米標示之建築結構尺寸。
2. 有關舒緩噪音措施之詳情，請參閱本售樓說明書的有關資料章節。
3. 8樓各A8及B8單位的強效減音露台將設有鋁覆蓋板(作為舒緩噪音措施之一 - 吸音物料)，詳情請參閱本售樓說明書的「裝置、裝修物料及設備」和「有關資料」章節。



Description 描述	Unit 單位							
	A1	A2	A3	A5	A6	A7	A8	
Floor-to-floor height (refers to the height between the top surface of the structural slab of a floor and the top surface of the structural slab of its immediate upper floor) of each residential property (m) 每個住宅物業的層與層之間的高度(指該樓層之石屎地台面與上一層石屎地台面之高度距離)(米)	2.900 3.150 3.225 3.575	2.850 3.150 3.200 3.250 3.550	3.150				3.150 3.200 3.250 3.450	2.850 3.150 3.200 3.500
Thickness of the floor slabs (excluding plaster) of each residential property (mm) 每個住宅物業的樓板(不包括灰泥)厚度(毫米)	150, 175		150			150 175		

Floor plans of residential properties in the development

發展項目的住宅物業的樓面平面圖



Scale 比例 0 1 2 3 4 5M (米)



The internal areas of the residential properties on the upper floors will generally be slightly larger than those on the lower floors because of the reducing thickness of the structural walls on the upper floors. (This statement does not apply to the residential properties in the Development because the design of the Development is such that the reducing thickness of the structural walls of residential properties on the upper floors does not increase the internal areas of those residential properties.)

因住宅物業的較高樓層的結構牆的厚度遞減，較高樓層的內部面積，一般比較低樓層的內部面積稍大。(不適用於發展項目內的住宅物業，因為發展項目的設計是較高樓層的住宅物業的結構牆的厚度遞減不會增加該等住宅物業的內部面積。)

Remarks:

- The dimensions in the floor plans are all structural dimensions in millimetre.
- For details of the noise mitigation measures, please refer to the Relevant Information section in this sales brochure.
- Aluminium cladding (being one of the noise mitigation measures - Sound Absorption Material) will be installed at the enhanced acoustic balcony of each Units A8 and B8 on 8/F. Please refer to "the Fittings, Finishes and Appliances" and "the Relevant Information" section(s) in this sales brochure for details.

備註:

- 樓面平面圖之尺規所列數字為以毫米標示之建築結構尺寸。
- 有關舒緩噪音措施之詳情，請參閱本售樓說明書的有關資料章節。
- 8樓各A8及B8單位的強效減音露台將設有鋁覆蓋板(作為舒緩噪音措施之一 - 吸音物料)，詳情請參閱本售樓說明書的「裝置、裝修物料及設備」和「有關資料」章節。

Description 描述	Unit 單位						
	B1	B2	B3	B5	B6	B7	B8
Floor-to-floor height (refers to the height between the top surface of the structural slab of a floor and the top surface of the structural slab of its immediate upper floor) of each residential property (m) 每個住宅物業的層與層之間的高度(指該樓層之石屎地台面與上一層石屎地台面之高度距離)(米)	3.150 3.225 3.575	2.850 3.150 3.200 3.250 3.550		3.150		3.150 3.200 3.250 3.450	2.850 3.150 3.200 3.500
Thickness of the floor slabs (excluding plaster) of each residential property (mm) 每個住宅物業的樓板(不包括灰泥)厚度(毫米)		150, 175			150		150 175

Floor plans of residential properties in the development

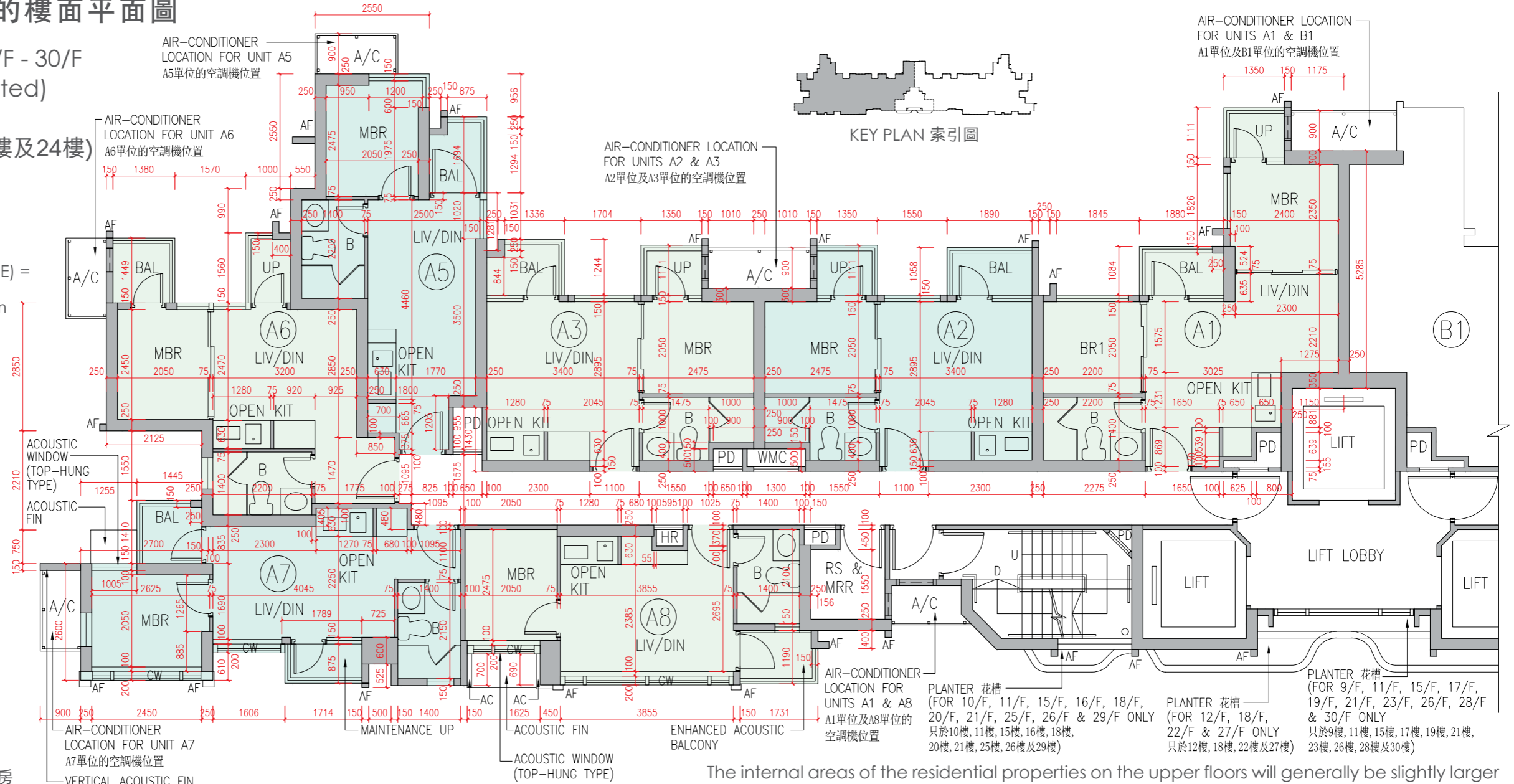
發展項目的住宅物業的樓面平面圖

9/F - 12/F, 15/F - 23/F & 25/F - 30/F
(13/F, 14/F & 24/F are omitted)

9樓至12樓、15樓至23樓及
25樓至30樓 (不設13樓、14樓及24樓)

LEGEND 圖例

- AC = Aluminium Cladding 鋁覆蓋板
- ACOUSTIC FIN = 隔音簷
- ACOUSTIC WINDOW (TOP-HUNG TYPE) = 減音窗(上懸式)
- A/C = Air-Conditioner Platform 空調機平台
- AF = Architectural Feature 建築裝飾
- B = Bathroom 浴室
- BAL = Balcony 露台
- BR = Bedroom 睡房
- CFR = Common Flat Roof 公用平台
- CW = Curtain Wall 幕牆
- D = Down 下
- EMR = Electrical Meter Room 電錶房
- ENHANCED ACOUSTIC BALCONY = 強效減音露台
- HR = Hose Reel 消防喉轆
- LIFT = 升降機
- LIFT LOBBY = 升降機大堂
- LIV/DIN = Living/Dining Room 客/飯廳
- MAINTENANCE UP = Maintenance Utility Platform 維修用工作平台
- MBR = Master Bedroom 主人睡房
- OPEN KIT = Open Kitchen 開放式廚房
- PD = Pipe Duct 管道槽
- PLANTER = 花槽
- RS & MRR = Refuse Storage & Material Recovery Room 垃圾及物料回收室
- U = Up 上
- UP = Utility Platform 工作平台
- VERTICAL ACOUSTIC FIN = 豎立隔音簷
- WMC = Water Meter Cabinet 水錶箱



The internal areas of the residential properties on the upper floors will generally be slightly larger than those on the lower floors because of the reducing thickness of the structural walls on the upper floors. (This statement does not apply to the residential properties in the Development because the design of the Development is such that the reducing thickness of the structural walls of residential properties on the upper floors does not increase the internal areas of those residential properties.)

因住宅物業的較高樓層的結構牆的厚度遞減，較高樓層的內部面積，一般比較低樓層的內部面積稍大。(不適用於發展項目內的住宅物業，因為發展項目的設計是較高樓層的住宅物業的結構牆的厚度遞減不會增加該等住宅物業的內部面積。)

- Remarks:
- The dimensions in the floor plans are all structural dimensions in millimetre.
 - For details of the noise mitigation measures, please refer to the Relevant Information section in this sales brochure.
 - Aluminium cladding (being one of the noise mitigation measures - Sound Absorption Material) will be installed at the enhanced acoustic balcony of each Units A8 and B8 on 9/F-12/F, 15/F-23/F and 25/F-30/F. Please refer to "the Fittings, Finishes and Appliances" and "the Relevant Information" section(s) in this sales brochure for details.

- 備註:
- 樓面平面圖之尺規所列數字為以毫米標示之建築結構尺寸。
 - 有關舒緩噪音措施之詳情，請參閱本售樓說明書的有關資料章節。
 - 9樓至12樓、15樓至23樓及25樓至30樓各A8及B8單位的強效減音露台將設有鋁覆蓋板(作為舒緩噪音措施之一-吸音物料)，詳情請參閱本售樓說明書的「裝置、裝修物料及設備」和「有關資料」章節。

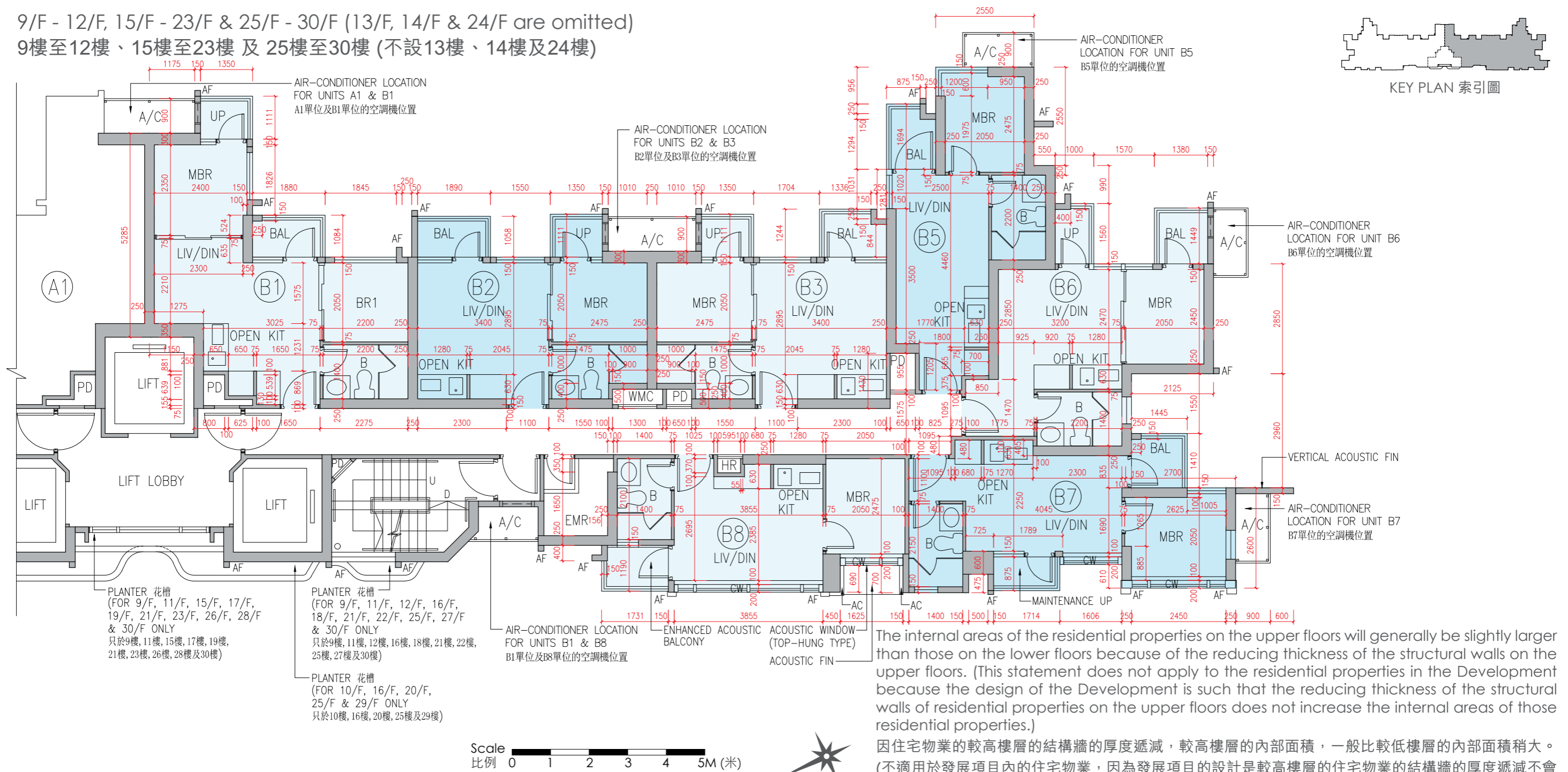
Description 描述	Unit 單位						
	A1	A2	A3	A5	A6	A7	A8
Floor-to-floor height (refers to the height between the top surface of the structural slab of a floor and the top surface of the structural slab of its immediate upper floor) of each residential property (m) 每個住宅物業的層與層之間的高度(指該樓層之石屎地台面與上一層石屎地台面之高度距離)(米)	3.150						
Thickness of the floor slabs (excluding plaster) of each residential property (mm) 每個住宅物業的樓板(不包括灰泥)厚度(毫米)	150, 175			150			150, 175

Floor plans of residential properties in the development

發展項目的住宅物業的樓面平面圖

9/F - 12/F, 15/F - 23/F & 25/F - 30/F (13/F, 14/F & 24/F are omitted)

9樓至12樓、15樓至23樓及25樓至30樓 (不設13樓、14樓及24樓)



The internal areas of the residential properties on the upper floors will generally be slightly larger than those on the lower floors because of the reducing thickness of the structural walls on the upper floors. (This statement does not apply to the residential properties in the Development because the design of the Development is such that the reducing thickness of the structural walls of residential properties on the upper floors does not increase the internal areas of those residential properties.)

因住宅物業的較高樓層的結構牆的厚度遞減，較高樓層的內部面積，一般比較低樓層的內部面積稍大。(不適用於發展項目內的住宅物業，因為發展項目的設計是較高樓層的住宅物業的結構牆的厚度遞減不會增加該等住宅物業的內部面積。)

- Remarks:
- The dimensions in the floor plans are all structural dimensions in millimetre.
 - For details of the noise mitigation measures, please refer to the Relevant Information section in this sales brochure.
 - Aluminium cladding (being one of the noise mitigation measures - Sound Absorption Material) will be installed at the enhanced acoustic balcony of each Units A8 and B8 on 9/F-12/F, 15/F-23/F and 25/F-30/F. Please refer to "the Fittings, Finishes and Appliances" and "the Relevant Information" section(s) in this sales brochure for details.

- 備註:
- 樓面平面圖之尺規所列數字為以毫米標示之建築結構尺寸。
 - 有關舒緩噪音措施之詳情，請參閱本售樓說明書的有關資料章節。
 - 9樓至12樓、15樓至23樓及25樓至30樓各A8及B8單位的強效減音露台將設有鋁覆蓋板(作為舒緩噪音措施之一-吸音物料)，詳情請參閱本售樓說明書的「裝置、裝修物料及設備」和「有關資料」章節。

Description 描述	Unit 單位						
	B1	B2	B3	B5	B6	B7	B8
Floor-to-floor height (refers to the height between the top surface of the structural slab of a floor and the top surface of the structural slab of its immediate upper floor) of each residential property (m) 每個住宅物業的層與層之間的高度(指該樓層之石屎地台面與上一層石屎地台面之高度距離)(米)	3.150						
Thickness of the floor slabs (excluding plaster) of each residential property (mm) 每個住宅物業的樓板(不包括灰泥)厚度(毫米)	150, 175		150			150, 175	

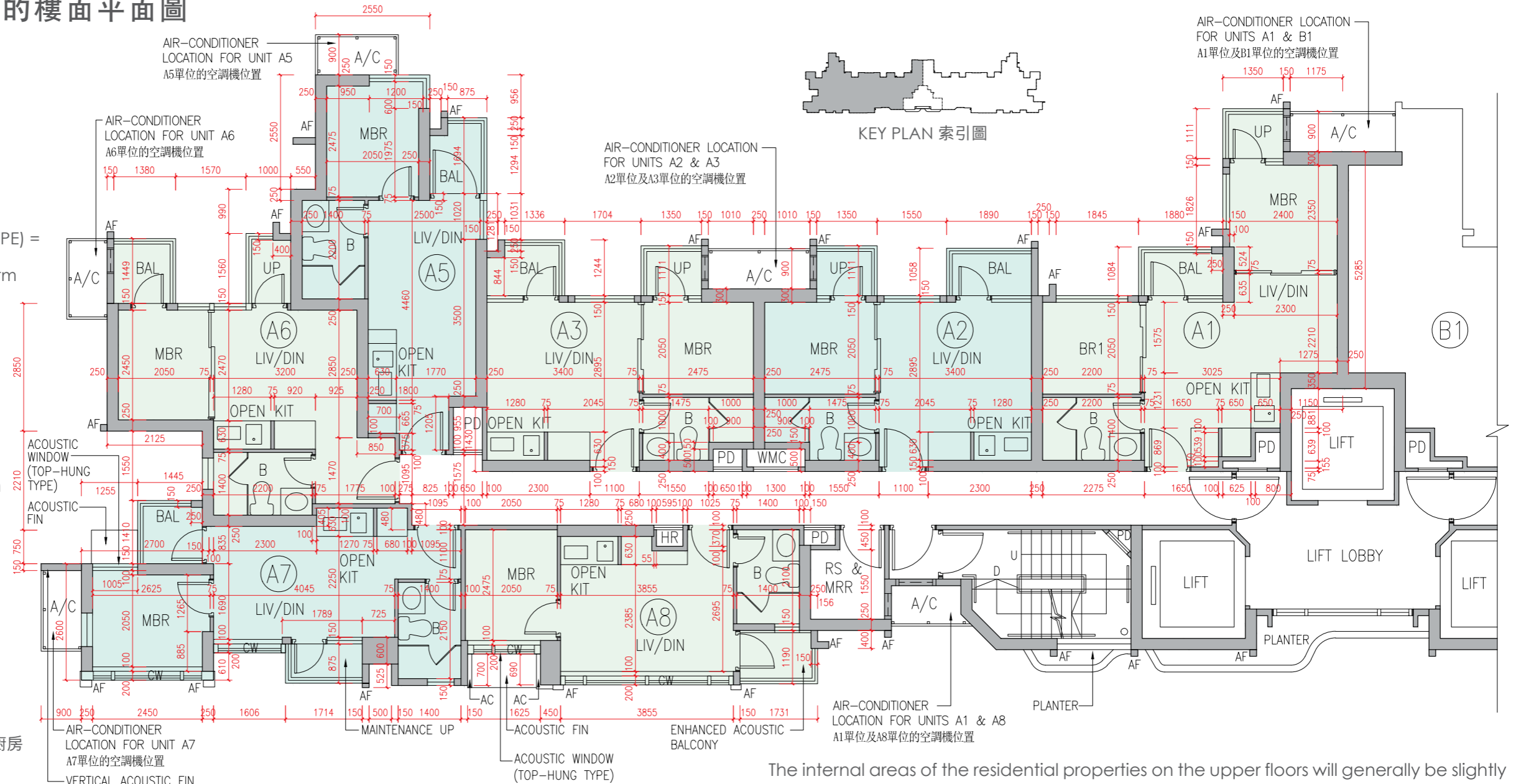
Floor plans of residential properties in the development

發展項目的住宅物業的樓面平面圖

31/F
31樓

LEGEND 圖例

- AC = Aluminium Cladding 鋁覆蓋板
- ACOUSTIC FIN = 隔音簷
- ACOUSTIC WINDOW (TOP-HUNG TYPE) = 減音窗(上懸式)
- A/C = Air-Conditioner Platform 空調機平台
- AF = Architectural Feature 建築裝飾
- B = Bathroom 浴室
- BAL = Balcony 露台
- BR = Bedroom 睡房
- CFR = Common Flat Roof 公用平台
- CW = Curtain Wall 幕牆
- D = Down 下
- EMR = Electrical Meter Room 電錶房
- ENHANCED ACOUSTIC BALCONY = 強效減音露台
- HR = Hose Reel 消防喉轆
- LIFT = 升降機
- LIFT LOBBY = 升降機大堂
- LIV/DIN = Living/Dining Room 客/飯廳
- MAINTENANCE UP = Maintenance Utility Platform 維修用工作平台
- MBR = Master Bedroom 主人睡房
- OPEN KIT = Open Kitchen 開放式廚房
- PD = Pipe Duct 管道槽
- PLANTER = 花槽
- RS & MRR = Refuse Storage & Material Recovery Room 垃圾及物料回收室
- U = Up 上
- UP = Utility Platform 工作平台
- VERTICAL ACOUSTIC FIN = 豎立隔音簷
- WMC = Water Meter Cabinet 水錶箱



Scale 比例 0 1 2 3 4 5M (米)



Description 描述	Unit 單位						
	A1	A2	A3	A5	A6	A7	A8
Floor-to-floor height (refers to the height between the top surface of the structural slab of a floor and the top surface of the structural slab of its immediate upper floor) of each residential property (m) 每個住宅物業的層與層之間的高度(指該樓層之石屎地台面與上一層石屎地台面之高度距離)(米)	3.150 3.175 3.475 3.575 3.775 3.825	3.150 3.175 3.275 3.475 3.525 3.825	3.150 3.175 3.275 3.475 3.525	3.150 3.175 3.275 3.475 3.525	3.150 3.175 3.275 3.475 3.525	3.150 3.175 3.475 3.525	3.150 3.175 3.475 3.525
Thickness of the floor slabs (excluding plaster) of each residential property (mm) 每個住宅物業的樓板(不包括灰泥)厚度(毫米)	150, 175, 200					150 175	150 175 200

The internal areas of the residential properties on the upper floors will generally be slightly larger than those on the lower floors because of the reducing thickness of the structural walls on the upper floors. (This statement does not apply to the residential properties in the Development because the design of the Development is such that the reducing thickness of the structural walls of residential properties on the upper floors does not increase the internal areas of those residential properties.)

因住宅物業的較高樓層的結構牆的厚度遞減，較高樓層的內部面積，一般比較低樓層的內部面積稍大。(不適用於發展項目內的住宅物業，因為發展項目的設計是較高樓層的住宅物業的結構牆的厚度遞減不會增加該等住宅物業的內部面積。)

Remarks:

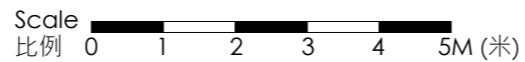
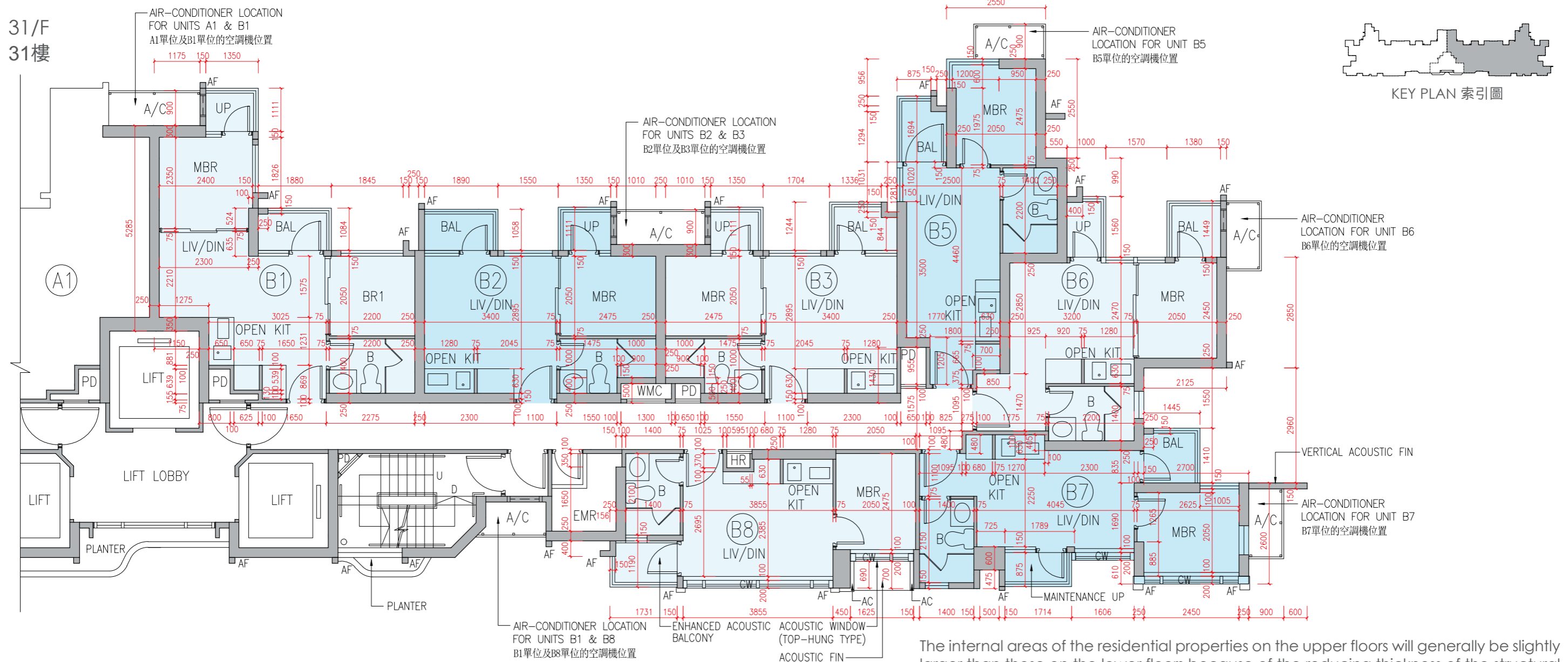
- The dimensions in the floor plans are all structural dimensions in millimetre.
- For details of the noise mitigation measures, please refer to the Relevant Information section in this sales brochure.
- Aluminium cladding (being one of the noise mitigation measures - Sound Absorption Material) will be installed at the enhanced acoustic balcony of each Units A8 and B8 on 31/F. Please refer to "the Fittings, Finishes and Appliances" and "the Relevant Information" section(s) in this sales brochure for details.

備註:

- 樓面平面圖之尺規所列數字為以毫米標示之建築結構尺寸。
- 有關舒緩噪音措施之詳情，請參閱本售樓說明書的有關資料章節。
- 31樓各A8及B8單位的強效減音露台將設有鋁覆蓋板(作為舒緩噪音措施之一 - 吸音物料)，詳情請參閱本售樓說明書的「裝置、裝修物料及設備」和「有關資料」章節。

Floor plans of residential properties in the development

發展項目的住宅物業的樓面平面圖



The internal areas of the residential properties on the upper floors will generally be slightly larger than those on the lower floors because of the reducing thickness of the structural walls on the upper floors. (This statement does not apply to the residential properties in the Development because the design of the Development is such that the reducing thickness of the structural walls of residential properties on the upper floors does not increase the internal areas of those residential properties.)

因住宅物業的較高樓層的結構牆的厚度遞減，較高樓層的內部面積，一般比較低樓層的內部面積稍大。(不適用於發展項目內的住宅物業，因為發展項目的設計是較高樓層的住宅物業的結構牆的厚度遞減不會增加該等住宅物業的內部面積。)

Remarks:

1. The dimensions in the floor plans are all structural dimensions in millimetre.
2. For details of the noise mitigation measures, please refer to the Relevant Information section in this sales brochure.
3. Aluminium cladding (being one of the noise mitigation measures - Sound Absorption Material) will be installed at the enhanced acoustic balcony of each Units A8 and B8 on 31/F. Please refer to "the Fittings, Finishes and Appliances" and "the Relevant Information" section(s) in this sales brochure for details.

備註:

1. 樓面平面圖之尺規所列數字為以毫米標示之建築結構尺寸。
2. 有關舒緩噪音措施之詳情，請參閱本售樓說明書的有關資料章節。
3. 31樓各A8及B8單位的強效減音露台將設有鋁覆蓋板(作為舒緩噪音措施之一 - 吸音物料)，詳情請參閱本售樓說明書的「裝置、裝修物料及設備」和「有關資料」章節。

Description 描述	Unit 單位						
	B1	B2	B3	B5	B6	B7	B8
Floor-to-floor height (refers to the height between the top surface of the structural slab of a floor and the top surface of the structural slab of its immediate upper floor) of each residential property (m) 每個住宅物業的層與層之間的高度(指該樓層之石屎地台面與上一層石屎地台面之高度距離)(米)	3.150 3.175 3.475 3.575 3.775 3.825	3.150 3.175 3.275 3.475 3.525 3.775 3.825	3.150 3.175 3.275 3.475 3.525	3.150 3.175 3.200 3.275 3.525	3.150 3.175 3.275 3.475 3.525	3.150 3.175 3.275 3.475 3.525	3.150 3.175 3.275 3.475 3.525
Thickness of the floor slabs (excluding plaster) of each residential property (mm) 每個住宅物業的樓板(不包括灰泥)厚度(毫米)	150, 175, 200					150 175	150 175 200