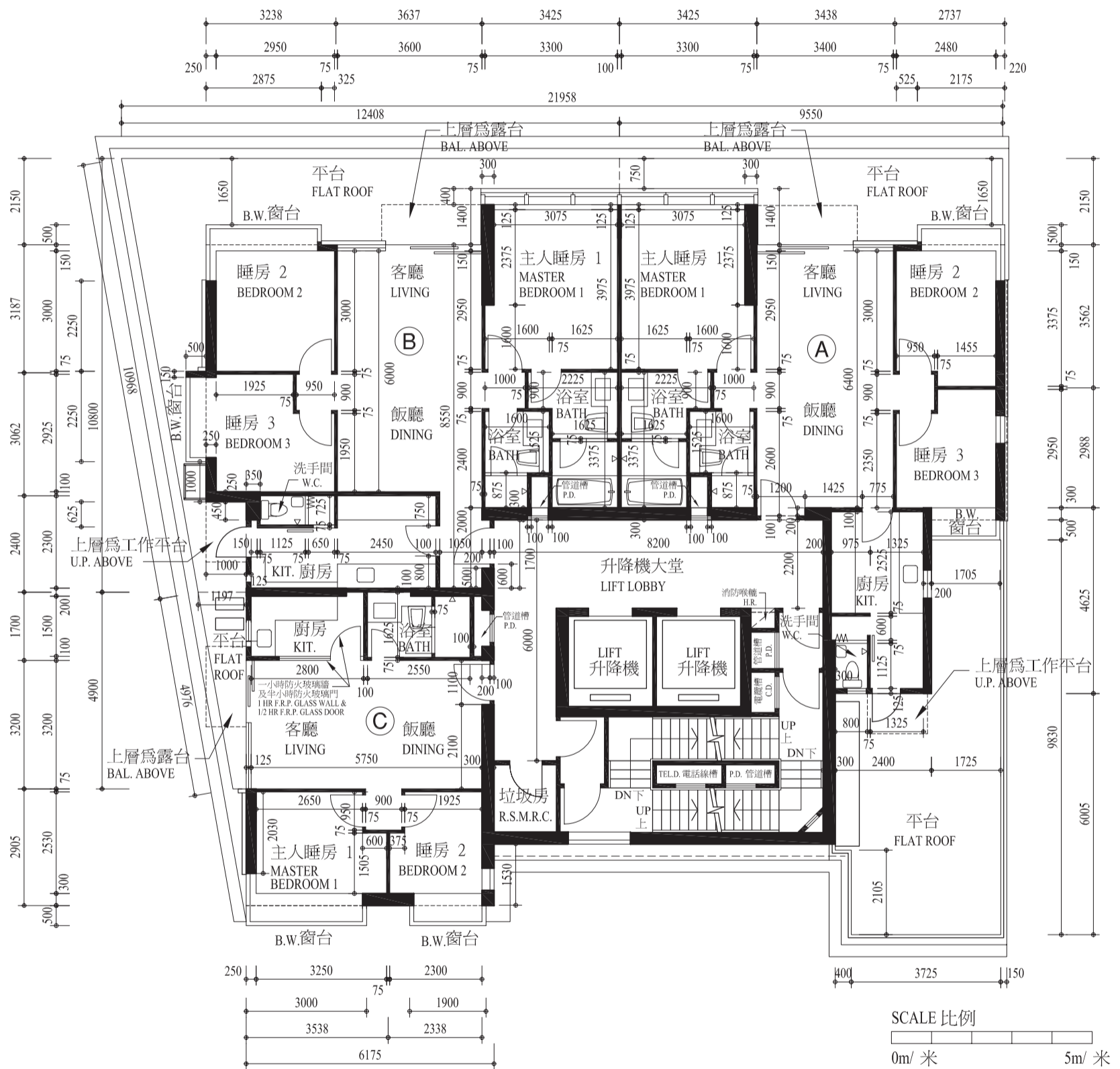


# FLOOR PLANS OF RESIDENTIAL PROPERTIES IN THE DEVELOPMENT

## 發展項目的住宅物業的樓面平面圖

### 6/F Floor Plan

#### 6樓平面圖



Notes: The dimensions of the floor plans are all structural dimensions in millimeters.

附註：平面圖之尺規所列數字為以毫米標示之建築結構尺寸。

Notes:

1. Residential floors start from 6/F to 29/F. There are no 4/F, 13/F, 14/F & 24/F in the Development.
2. Floor-to-floor height (refer to the height between the top surface of the structural slab of a floor and the top surface of the structural slab of its immediate upper floor): 6/F: 10'9" (3.27m)
3. Thickness of the floor slabs (excluding plaster) of each residential property: 6/F: 150mm
4. The internal areas of the residential properties on the upper floors will generally be slightly larger than those on the lower floors because of the reducing thickness of the structural walls on the upper floors.
5. Prospective purchasers are advised to conduct on-site visit of the Development for a better understanding of the development site, its surrounding environment and areas and the public facilities nearby.

附註:

1. 住宅單位由6樓至29樓。物業不設4、13、14及24樓。
2. 單位樓面至樓面高度(指該樓層之石屎地台面與上一層石屎地台面之高度距離): 6樓: 10呎9吋(3.27米)
3. 每個住宅物業的樓板(不包括灰泥)的厚度: 6樓: 150毫米
4. 因住宅物業的較高樓層的結構牆的厚度遞減, 較高樓層的內部面積, 一般比較低樓層的內部面積稍大。
5. 準買方應親身到訪物業發展項目地盤現場, 以便清楚了解該物業發展項目、其周圍地區、環境及鄰近公共設施。

**ABBREVIATION 縮寫**

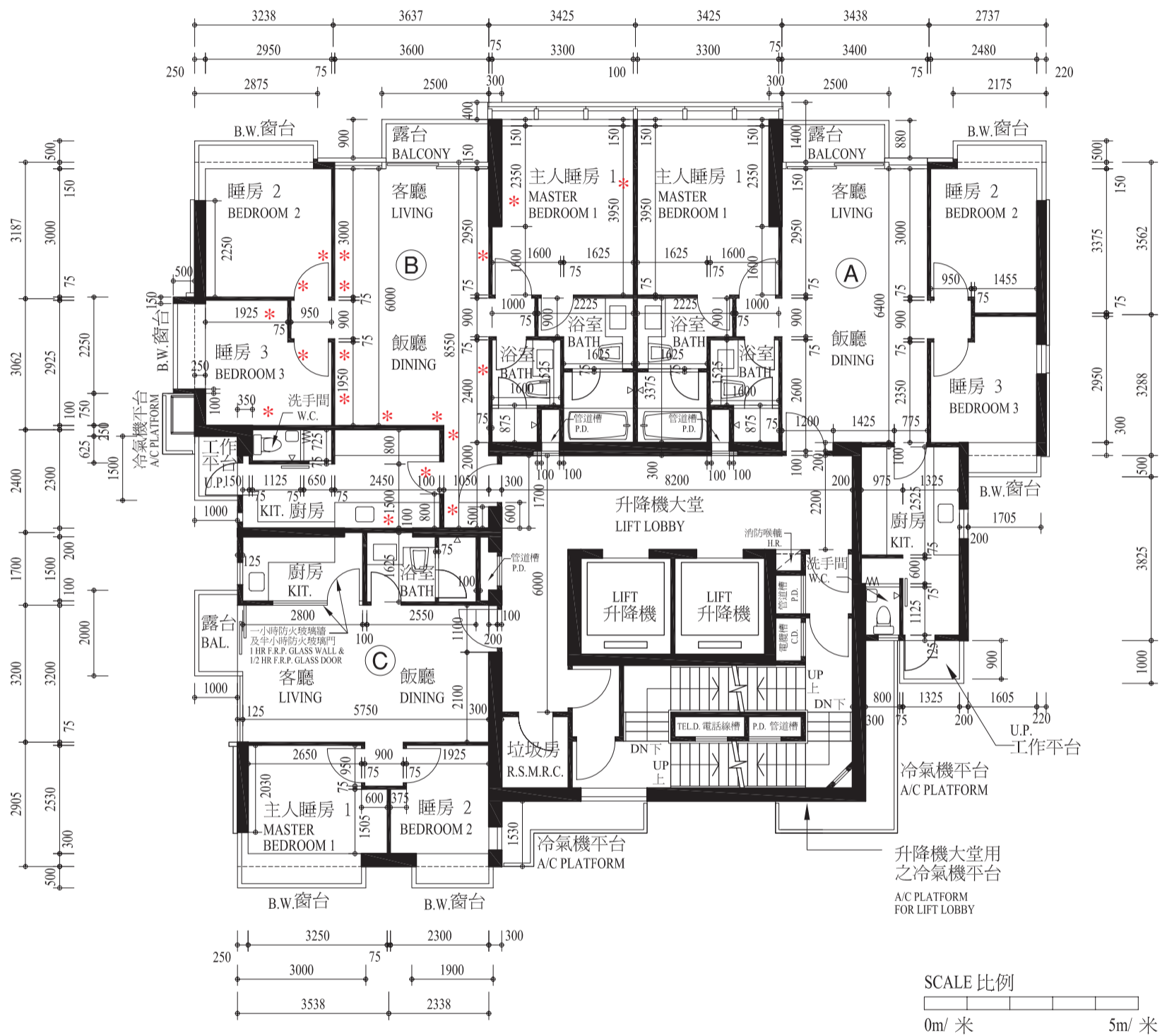
A/C PLATFORM	冷氣機平台	Air-conditioning Platform
BAL.	露台	Balcony
BATH	浴室	Bathroom
B.W.	窗台	Bay Window
C.D.	電纜槽	Cable Duct
DINING	飯廳	Dining Room
DN	下	Down
H.R.	消防喉轆	Hose Reel
KIT.	廚房	Kitchen
LIVING	客廳	Living Room
P.D.	管道槽	Pipe & Drainage Duct
R.S.M.R.C.	垃圾及物料回收房	Refuse Storage and Material Recovery Chamber
STORE	儲物室	Store Room
TEL.D.	電話線槽	Telephone Duct
U.P.	工作平台	Utility Platform
W.C.	洗手間	Water Closet
1/2 HR F.R.P. GLASS DOOR	半小時抗火時效防火玻璃門	1/2 hour Fire Resistance Period glass door
1 HR F.R.P. GLASS WALL	一小時抗火時效防火玻璃牆	1 hour Fire Resistance Period glass wall

# FLOOR PLANS OF RESIDENTIAL PROPERTIES IN THE DEVELOPMENT

## 發展項目的住宅物業的樓面平面圖

### 7/F-12/F & 15/F-23/F Floor Plan

### 7樓至12樓及15樓至23樓平面圖



Note : The dimensions of the floor plans are all structural dimensions in millimeters.

Please refer to page 19 of this sales brochure for legend of the abbreviations shown in the floor plan.

\*Please refer to page 21 for details of the alterations made to Unit B on 23/F.

附註：平面圖之尺規所列數字為以毫米標示之建築結構尺寸。

平面圖中顯示之縮寫請參閱本售樓說明書第19頁

\*有關23樓B單位之改動詳情，請參考第21頁。

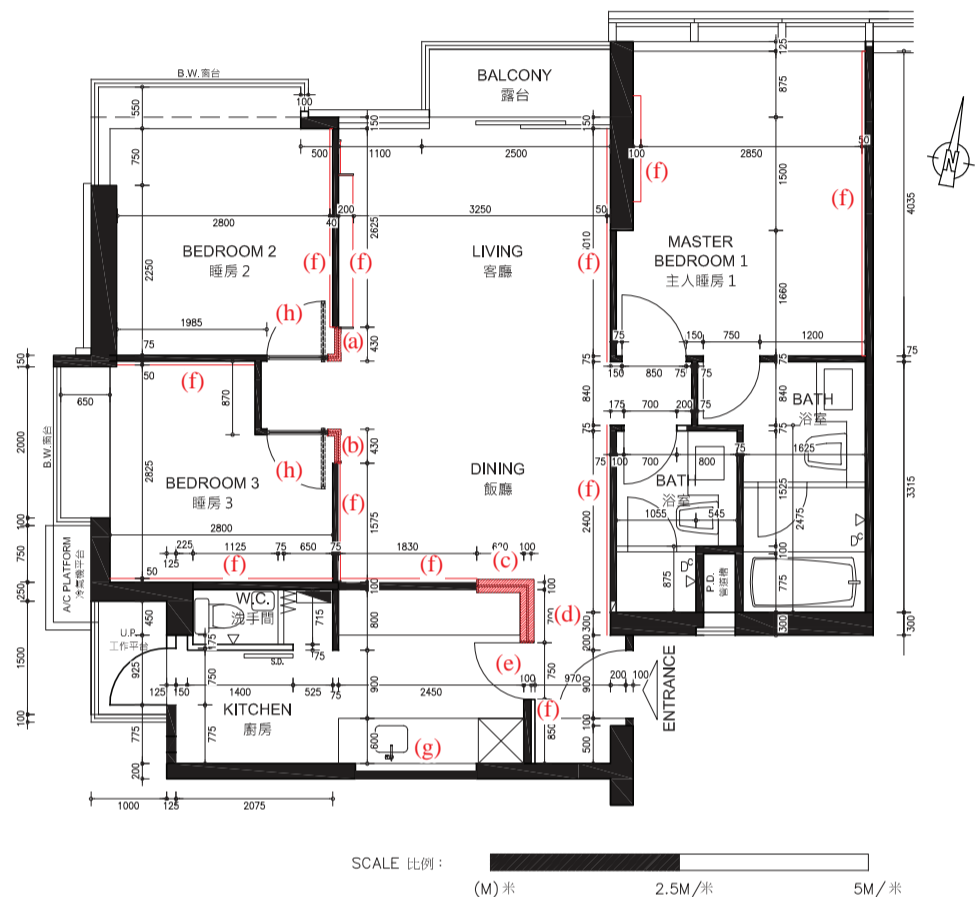
Notes:

- Residential floors start from 6/F to 29/F.  
There are no 4/F, 13/F, 14/F & 24/F in the Development.
- Floor-to-floor height (refer to the height between the top surface of the structural slab of a floor and the top surface of the structural slab of its immediate upper floor): 7/F – 23/F: 10'9" (3.27m)
- Thickness of the floor slabs (excluding plaster) of each residential property: 7/F – 23/F: 150mm
- The internal areas of the residential properties on the upper floors will generally be slightly larger than those on the lower floors because of the reducing thickness of the structural walls on the upper floors.
- Prospective purchasers are advised to conduct on-site visit of the Development for a better understanding of the development site, its surrounding environment and areas and the public facilities nearby.

附註:

- 住宅單位由6樓至29樓。物業不設4、13、14及24樓。
- 單位樓面至樓面高度(指該樓層之石屎地台面與上一層石屎地台面之高度距離): 7樓至23樓: 10呎9吋(3.27米)
- 每個住宅物業的樓板(不包括灰泥)的厚度: 7樓至23樓: 150毫米
- 因住宅物業的較高樓層的結構牆的厚度遞減, 較高樓層的內部面積, 一般比較低樓層的內部面積稍大。
- 準買方應親身到訪物業發展項目地盤現場, 以便清楚了解該物業發展項目、其周圍地區、環境及鄰近公共設施。

## As-built Plan of Unit B on 23/F 23樓B單位實際建造平面圖



Unit B of 23/F has been altered in the following ways:

- Part of the non-structural internal wall (including any fittings, fixtures, appliances, etc. as installed on such wall) between Bedroom 2 and Living Room has been demolished and replaced by a non-structural internal glass wall. Please refer to "Fittings, Finishes and Appliances" for details;
- Part of the non-structural internal wall (including any fittings, finishes, appliances, etc. as installed on such wall) between Bedroom 3 and Dining Room has been demolished and replaced by a non-structural internal glass wall. Please refer to "Fittings, Finishes and Appliances" for details;
- Part of the non-structural internal wall (including any fittings, fixtures, appliances, etc. as installed on such wall) between Kitchen and Dining Room has been demolished and replaced by a non-structural 1/2 hour fire resistance period glass wall. Please refer to "Fittings, Finishes and Appliances" for details;
- Part of the non-structural internal wall (including any fittings, fixtures, appliances, etc. as installed on such wall) between Kitchen and corridor has been demolished and replaced by a non-structural 1/2 hour fire resistance period glass wall. Please refer to "Fittings, Finishes and Appliances" for details.
- The door has been removed and replaced by a 1/2 hour fire resistance period vision panel door with steel frame. Please refer to "Fittings, Finishes and Appliances" for details;
- Internal walls applied furring. Please refer to "Fittings, Finishes and Appliances" for details;
- A non-structural internal wall has been erected. Please refer to "Fittings, Finishes and Appliances" for details; and
- The door has been removed and replaced by a glass panel door with steel frame. Please refer to "Fittings, Finishes and Appliances" for details.

23樓B單位已施行以下改動:

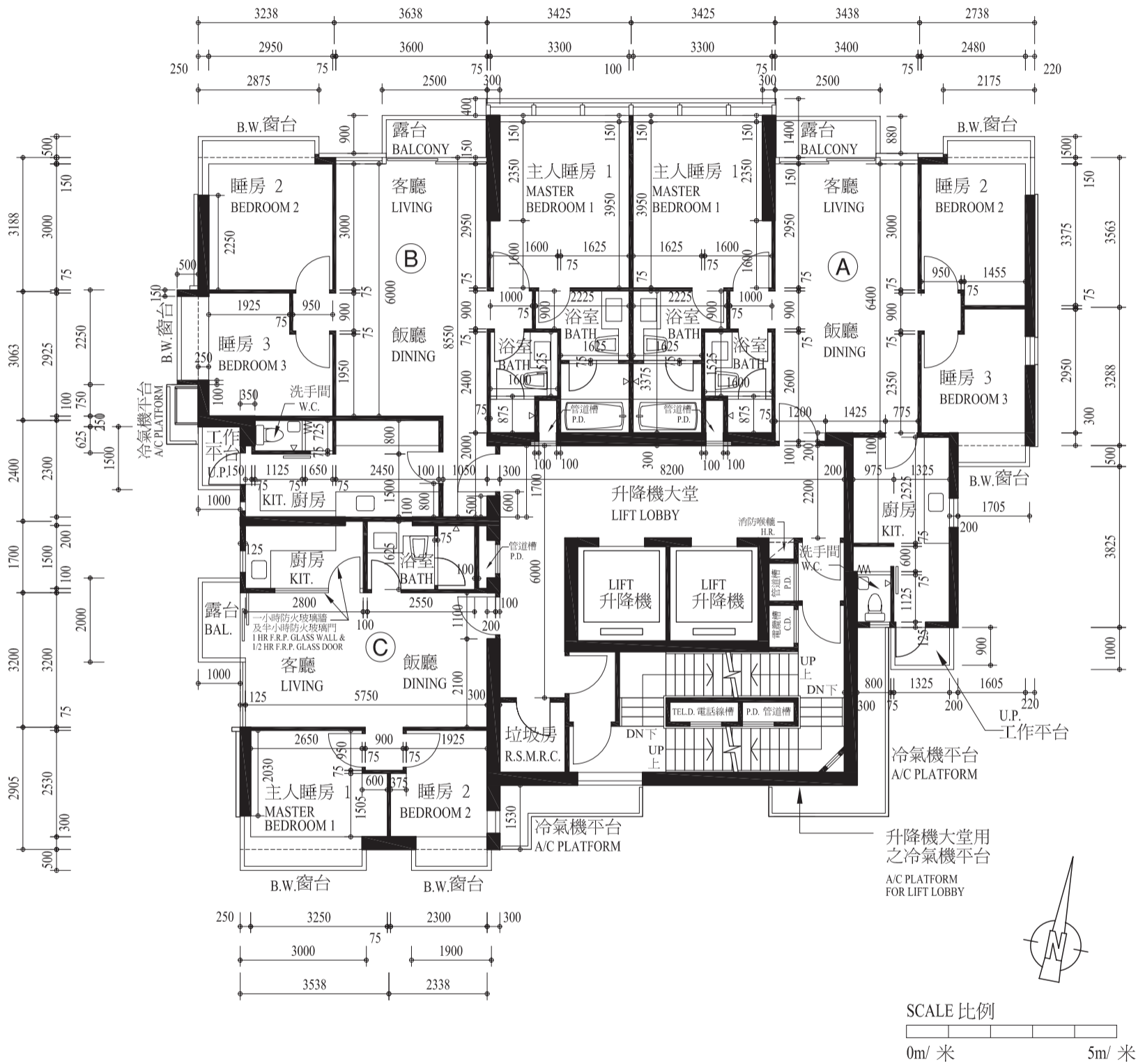
- 睡房2及客廳之間部分的非結構內牆(包括任何安裝在此非結構內牆的裝置、裝修物料及設備等)已被拆除, 並改建為非結構玻璃牆。詳情請參閱「裝置、裝修物料及設備」;
- 睡房3及飯廳之間部分的非結構內牆(包括任何安裝在此非結構內牆的裝置、裝修物料及設備等)已被拆除, 並改建為非結構玻璃牆。詳情請參閱「裝置、裝修物料及設備」;
- 廚房及飯廳之間部分的非結構內牆(包括任何安裝在此非結構內牆的裝置、裝修物料及設備等)已被拆除, 並改建為非結構半小時防火玻璃牆。詳情請參閱「裝置、裝修物料及設備」;
- 廚房及走廊之間部分的非結構內牆(包括任何安裝在此非結構內牆的裝置、裝修物料及設備等)已被拆除, 並改建為非結構半小時防火玻璃牆。詳情請參閱「裝置、裝修物料及設備」;
- 門拆除, 並以附有不銹鋼框及可視窗款式之半小時抗火時效防火門取代。詳情請參閱「裝置、裝修物料及設備」;
- 內牆加設圍身。詳情請參閱「裝置、裝修物料及設備」;
- 加建非結構內牆。詳情請參閱「裝置、裝修物料及設備」; 及
- 門拆除, 並以不銹鋼框玻璃門取代。詳情請參閱「裝置、裝修物料及設備」。

# FLOOR PLANS OF RESIDENTIAL PROPERTIES IN THE DEVELOPMENT

## 發展項目的住宅物業的樓面平面圖

### 25/F Floor Plan

#### 25樓平面圖



Notes: The dimensions of the floor plans are all structural dimensions in millimeters.

附註：平面圖之尺規所列數字為以毫米標示之建築結構尺寸。



Notes:

1. Residential floors start from 6/F to 29/F. There are no 4/F, 13/F, 14/F & 24/F in the Development.
2. Floor-to-floor height (refer to the height between the top surface of the structural slab of a floor and the top surface of the structural slab of its immediate upper floor): 25/F: 11'6" (3.50m)
3. Thickness of the floor slabs (excluding plaster) of each residential property: 25/F: 150mm, 175mm and 200mm
4. The internal areas of the residential properties on the upper floors will generally be slightly larger than those on the lower floors because of the reducing thickness of the structural walls on the upper floors.
5. Prospective purchasers are advised to conduct on-site visit of the Development for a better understanding of the development site, its surrounding environment and areas and the public facilities nearby.

附註:

1. 住宅單位由6樓至29樓。物業不設4、13、14及24樓。
2. 單位樓面至樓面高度(指該樓層之石屎地台面與上一層石屎地台面之高度距離): 25樓: 11呎6吋(3.50米)
3. 每個住宅物業的樓板(不包括灰泥)的厚度: 25樓: 150毫米, 175毫米及200毫米
4. 因住宅物業的較高樓層的結構牆的厚度遞減, 較高樓層的內部面積, 一般比較低樓層的內部面積稍大。
5. 準買方應親身到訪物業發展項目地盤現場, 以便清楚了解該物業發展項目、其周圍地區、環境及鄰近公共設施。

**ABBREVIATION 縮寫**

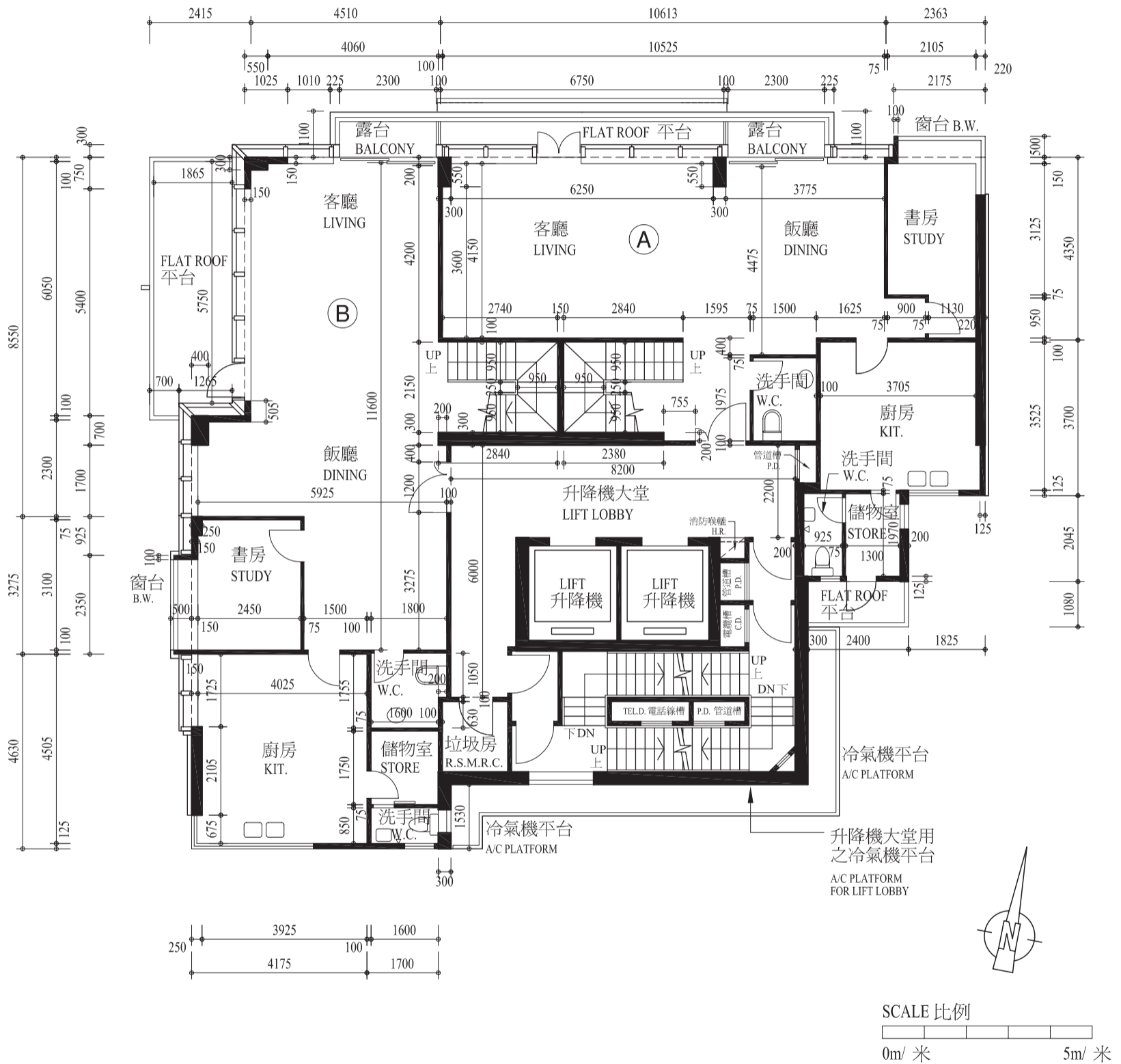
A/C PLATFORM	冷氣機平台	Air-conditioning Platform
BAL.	露台	Balcony
BATH	浴室	Bathroom
B.W.	窗台	Bay Window
C.D.	電纜槽	Cable Duct
DINING	飯廳	Dining Room
DN	下	Down
H.R.	消防喉轆	Hose Reel
KIT.	廚房	Kitchen
LIVING	客廳	Living Room
P.D.	管道槽	Pipe & Drainage Duct
R.S.M.R.C.	垃圾及物料回收房	Refuse Storage and Material Recovery Chamber
STORE	儲物室	Store Room
TEL.D.	電話線槽	Telephone Duct
U.P.	工作平台	Utility Platform
W.C.	洗手間	Water Closet
1/2 HR F.R.P. GLASS DOOR	半小時抗火時效防火玻璃門	1/2 hour Fire Resistance Period glass door
1 HR F.R.P. GLASS WALL	一小時抗火時效防火玻璃牆	1 hour Fire Resistance Period glass wall

# FLOOR PLANS OF RESIDENTIAL PROPERTIES IN THE DEVELOPMENT

## 發展項目的住宅物業的樓面平面圖

### 26/F Floor Plan (Lower Duplex)

### 26樓平面圖(複式低層)



Notes: The dimensions of the floor plans are all structural dimensions in millimeters.

附註：平面圖之尺規所列數字為以毫米標示之建築結構尺寸。

Notes:

1. Residential floors start from 6/F to 29/F. There are no 4/F, 13/F, 14/F & 24/F in the Development.
2. Floor-to-floor height (refer to the height between the top surface of the structural slab of a floor and the top surface of the structural slab of its immediate upper floor): 26/F: 11'6" (3.50m)
3. Thickness of the floor slabs (excluding plaster) of each residential property: 26/F: 150mm, 200mm and 225mm
4. The internal areas of the residential properties on the upper floors will generally be slightly larger than those on the lower floors because of the reducing thickness of the structural walls on the upper floors.
5. Prospective purchasers are advised to conduct on-site visit of the Development for a better understanding of the development site, its surrounding environment and areas and the public facilities nearby.

附註:

1. 住宅單位由6樓至29樓。物業不設4、13、14及24樓。
2. 單位樓面至樓面高度(指該樓層之石屎地台面與上一層石屎地台面之高度距離): 26樓: 11呎6吋(3.50米)
3. 每個住宅物業的樓板(不包括灰泥)的厚度: 26樓: 150毫米, 200毫米及225毫米
4. 因住宅物業的較高樓層的結構牆的厚度遞減, 較高樓層的內部面積, 一般比較低樓層的內部面積稍大。
5. 準買方應親身到訪物業發展項目地盤現場, 以便清楚了解該物業發展項目、其周圍地區、環境及鄰近公共設施。

**ABBREVIATION 縮寫**

A/C PLATFORM	冷氣機平台	Air-conditioning Platform
BAL.	露台	Balcony
BATH	浴室	Bathroom
B.W.	窗台	Bay Window
C.D.	電纜槽	Cable Duct
DINING	飯廳	Dining Room
DN	下	Down
H.R.	消防喉轆	Hose Reel
KIT.	廚房	Kitchen
LIVING	客廳	Living Room
P.D.	管道槽	Pipe & Drainage Duct
R.S.M.R.C.	垃圾及物料回收房	Refuse Storage and Material Recovery Chamber
STORE	儲物室	Store Room
TEL.D.	電話線槽	Telephone Duct
U.P.	工作平台	Utility Platform
W.C.	洗手間	Water Closet
1/2 HR F.R.P. GLASS DOOR	半小時抗火時效防火玻璃門	1/2 hour Fire Resistance Period glass door
1 HR F.R.P. GLASS WALL	一小時抗火時效防火玻璃牆	1 hour Fire Resistance Period glass wall

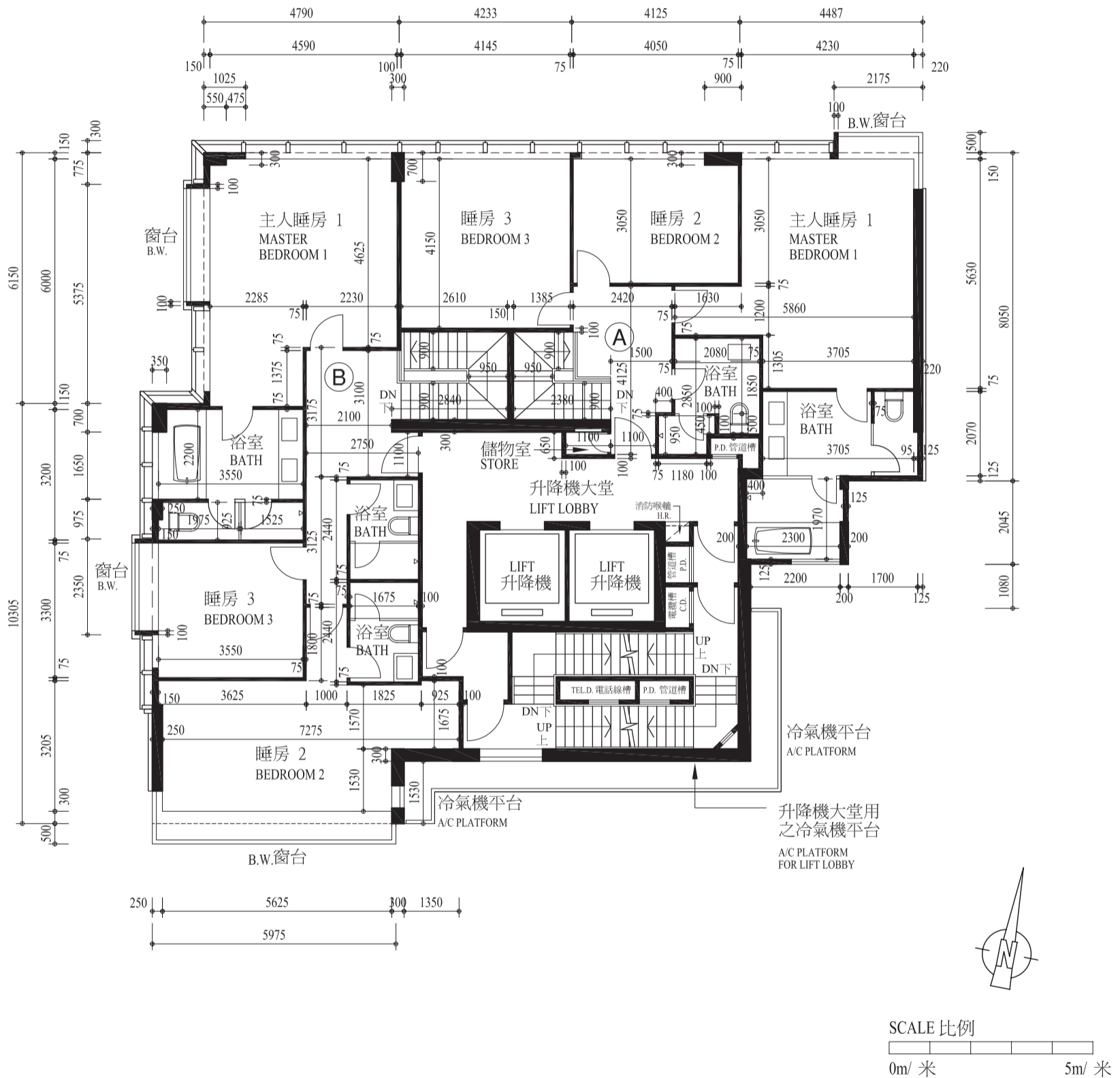


# FLOOR PLANS OF RESIDENTIAL PROPERTIES IN THE DEVELOPMENT

## 發展項目的住宅物業的樓面平面圖

### 27/F Floor Plan (Upper Duplex)

#### 27樓平面圖(複式高層)



Notes: The dimensions of the floor plans are all structural dimensions in millimeters.

附註：平面圖之尺規所列數字為以毫米標示之建築結構尺寸。

Notes:

1. Residential floors start from 6/F to 29/F. There are no 4/F, 13/F, 14/F & 24/F in the Development.
2. Floor-to-floor height (refer to the height between the top surface of the structural slab of a floor and the top surface of the structural slab of its immediate upper floor): 27/F: 11'6" (3.50m)
3. Thickness of the floor slabs (excluding plaster) of each residential property: 27/F: 150mm, 175mm and 225mm
4. The internal areas of the residential properties on the upper floors will generally be slightly larger than those on the lower floors because of the reducing thickness of the structural walls on the upper floors.
5. Prospective purchasers are advised to conduct on-site visit of the Development for a better understanding of the development site, its surrounding environment and areas and the public facilities nearby.

附註:

1. 住宅單位由6樓至29樓。物業不設4、13、14及24樓。
2. 單位樓面至樓面高度(指該樓層之石屎地台面與上一層石屎地台面之高度距離): 27樓: 11呎6吋(3.50米)
3. 每個住宅物業的樓板(不包括灰泥)的厚度: 27樓: 150毫米, 175毫米及225毫米
4. 因住宅物業的較高樓層的結構牆的厚度遞減, 較高樓層的內部面積, 一般比較低樓層的內部面積稍大。
5. 準買方應親身到訪物業發展項目地盤現場, 以便清楚了解該物業發展項目、其周圍地區、環境及鄰近公共設施。

**ABBREVIATION 縮寫**

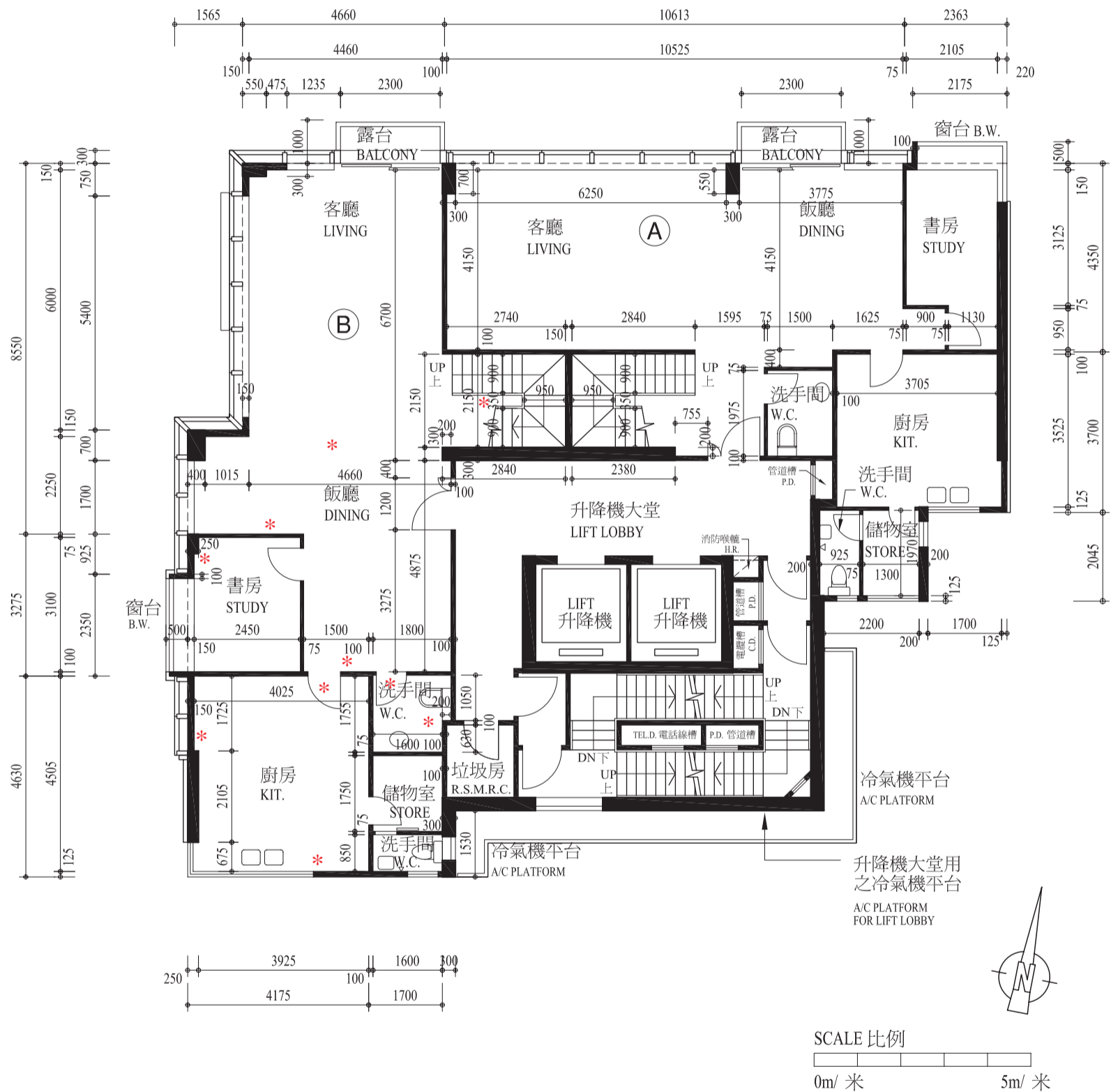
A/C PLATFORM	冷氣機平台	Air-conditioning Platform
BAL.	露台	Balcony
BATH	浴室	Bathroom
B.W.	窗台	Bay Window
C.D.	電纜槽	Cable Duct
DINING	飯廳	Dining Room
DN	下	Down
H.R.	消防喉轆	Hose Reel
KIT.	廚房	Kitchen
LIVING	客廳	Living Room
P.D.	管道槽	Pipe & Drainage Duct
R.S.M.R.C.	垃圾及物料回收房	Refuse Storage and Material Recovery Chamber
STORE	儲物室	Store Room
TEL.D.	電話線槽	Telephone Duct
U.P.	工作平台	Utility Platform
W.C.	洗手間	Water Closet
1/2 HR F.R.P. GLASS DOOR	半小時抗火時效防火玻璃門	1/2 hour Fire Resistance Period glass door
1 HR F.R.P. GLASS WALL	一小時抗火時效防火玻璃牆	1 hour Fire Resistance Period glass wall

# FLOOR PLANS OF RESIDENTIAL PROPERTIES IN THE DEVELOPMENT

## 發展項目的住宅物業的樓面平面圖

### 28/F Floor Plan (Lower Duplex)

#### 28樓平面圖(複式低層)



Notes : The dimensions of the floor plans are all structural dimensions in millimeters.

Please refer to page 19 of this sales brochure for legend of the abbreviations shown in the floor plan.

\*Please refer to page 29 for details of the alterations made to the unit.

附註：平面圖之尺規所列數字為以毫米標示之建築結構尺寸。

平面圖中顯示之縮寫請參閱本售樓說明書第19頁

\*有關本單位之改動詳情，請參考第29頁。

Notes:

1. Residential floors start from 6/F to 29/F. There are no 4/F, 13/F, 14/F & 24/F in the Development.
2. Floor-to-floor height (refer to the height between the top surface of the structural slab of a floor and the top surface of the structural slab of its immediate upper floor): 28/F: 11'6" (3.50m)
3. Thickness of the floor slabs (excluding plaster) of each residential property: 28/F: 150mm, 200mm and 225mm
4. The internal areas of the residential properties on the upper floors will generally be slightly larger than those on the lower floors because of the reducing thickness of the structural walls on the upper floors.
5. Prospective purchasers are advised to conduct on-site visit of the Development for a better understanding of the development site, its surrounding environment and areas and the public facilities nearby.

附註:

1. 住宅單位由6樓至29樓。物業不設4、13、14及24樓。
2. 單位樓面至樓面高度(指該樓層之石屎地台面與上一層石屎地台面之高度距離): 28樓: 11呎6吋(3.50米)
3. 每個住宅物業的樓板(不包括灰泥)的厚度: 28樓: 150毫米, 200毫米及225毫米
4. 因住宅物業的較高樓層的結構牆的厚度遞減, 較高樓層的內部面積, 一般比較低樓層的內部面積稍大。
5. 準買方應親身到訪物業發展項目地盤現場, 以便清楚了解該物業發展項目、其周圍地區、環境及鄰近公共設施。

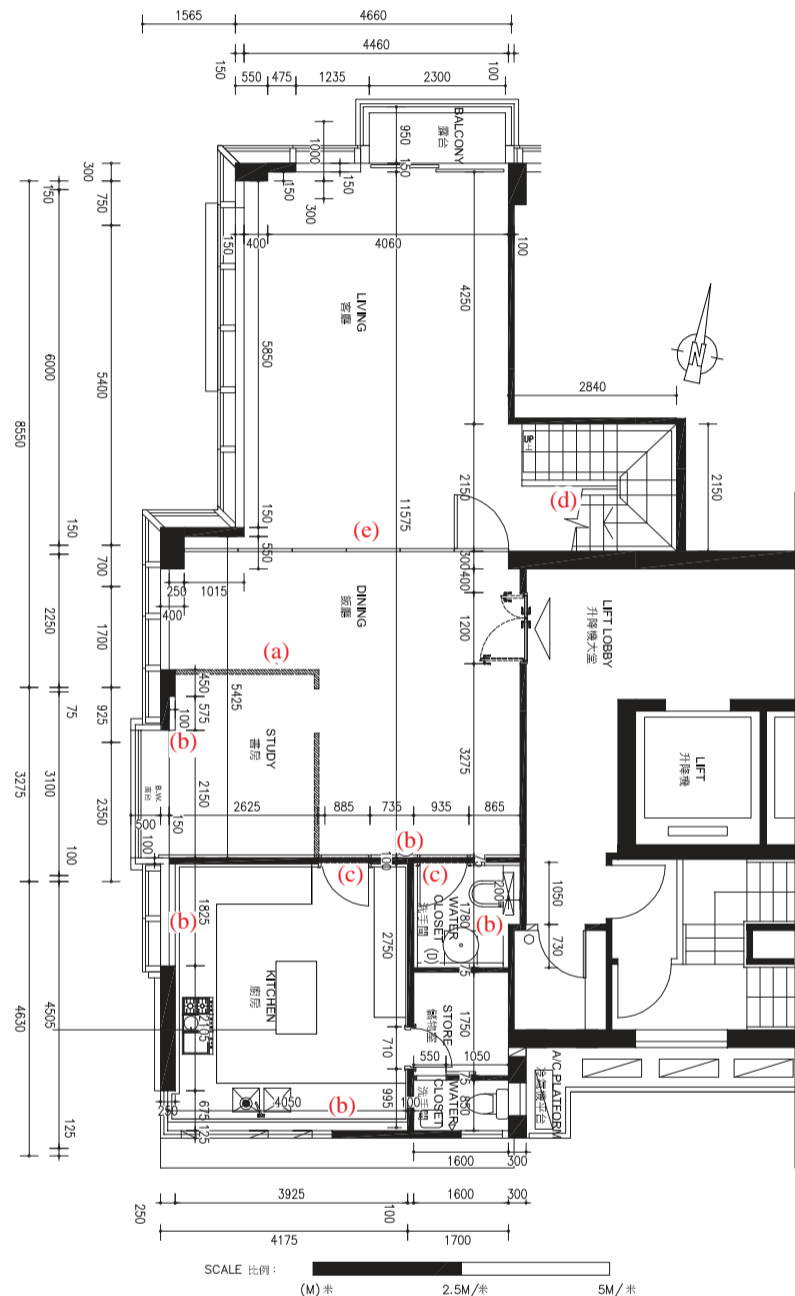
Duplex Unit B of 28/F has been altered in the following ways:

- a) The non-structural internal walls (including any fittings, fixtures, appliances, etc. as installed on such walls) between Study Room and Dining Room have been demolished and replaced by wooden frame folding partitions with glass panels. Please refer to "Fittings, Finishes and Appliances" for details;
- b) Internal walls have been applied furring. Please refer to "Fittings, Finishes and Appliances" for details;
- c) Part of the non-structural internal wall (including any fittings, fixtures, appliances, etc. as installed on such wall) and door have been demolished. A non-structural internal wall and a wooden door have been erected. Please refer to "Fittings, Finishes and Appliances" for details;
- d) Original baluster has been removed and a glass baluster has been erected; and
- e) A non-structural glass panel with wooden frame has been erected. Please refer to "Fittings, Finishes and Appliances" for details. Please refer to "Fittings, Finishes and Appliances" for details.

28樓B複式單位已施行以下改動:

- a) 書房及飯廳之間非結構內牆(包括任何安裝在此非結構內牆的裝置、裝修物料及設備等)已被拆除, 並改建為木外框玻璃摺門。詳情請參閱「裝置、裝修物料及設備」;
- b) 內牆加設圍身。詳情請參閱「裝置、裝修物料及設備」;
- c) 部分的非結構內牆(包括任何安裝在此非結構內牆的裝置、裝修物料及設備等)及門已被拆除。加建非結構內牆及木門。詳情請參閱「裝置、裝修物料及設備」;
- d) 原有欄杆已被拆除並加建玻璃欄杆; 及
- e) 加建非結構木外框玻璃摺門。詳情請參閱「裝置、裝修物料及設備」。

## As-built Plan of Duplex Unit B on 28/F 28樓複式B單位實際建造平面圖

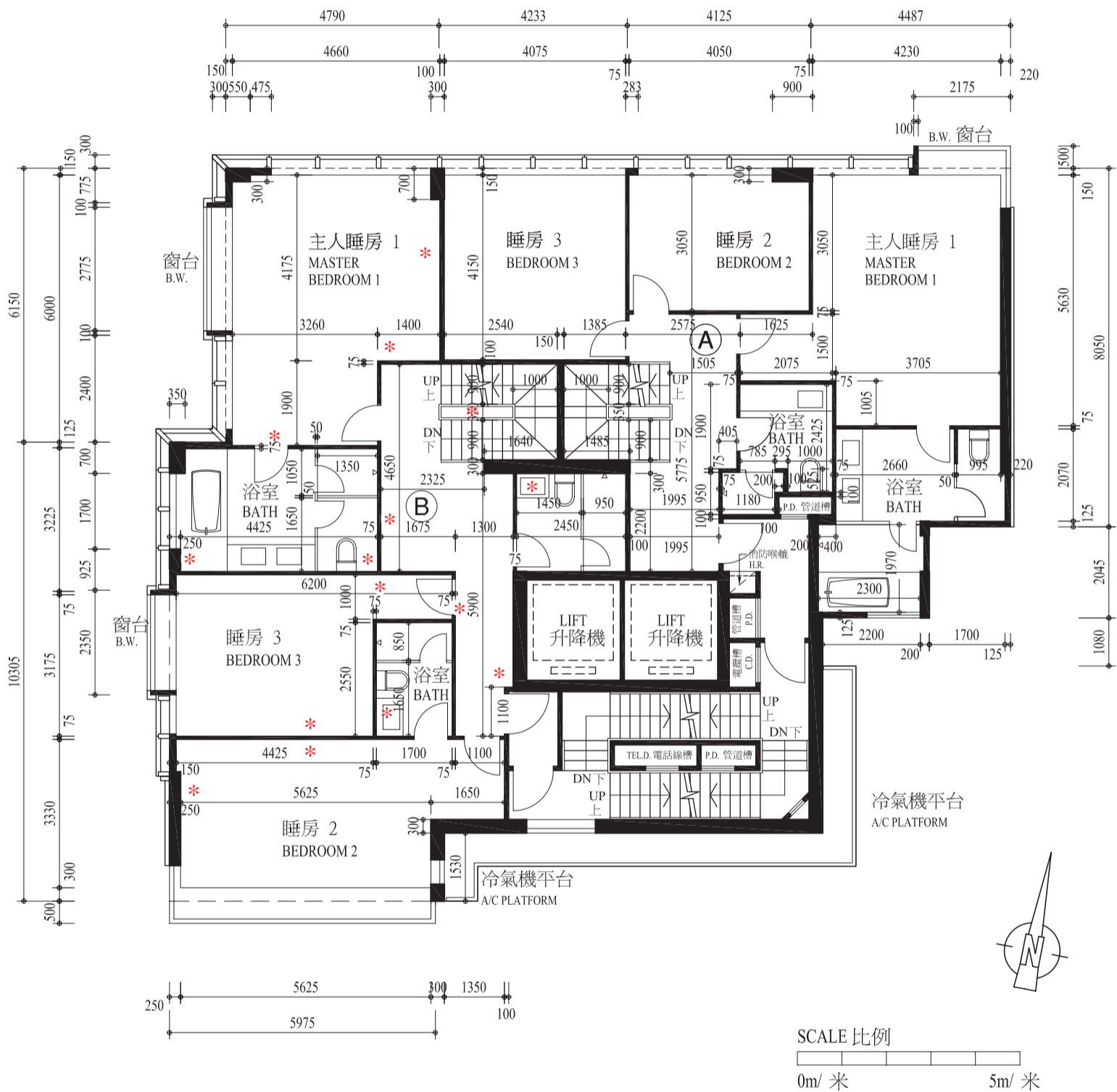


# FLOOR PLANS OF RESIDENTIAL PROPERTIES IN THE DEVELOPMENT

## 發展項目的住宅物業的樓面平面圖

### 29/F Floor Plan (Upper Duplex)

#### 29樓平面圖(複式高層)



Notes : The dimensions of the floor plans are all structural dimensions in millimeters.

Please refer to page 19 of this sales brochure for legend of the abbreviations shown in the floor plan.

\*Please refer to page 31 for details of the alterations made to the unit.

附註：平面圖之尺規所列數字為以毫米標示之建築結構尺寸。

平面圖中顯示之縮寫請參閱本售樓說明書第19頁

\*有關本單位之工程改動詳情，請參考第31頁。



Notes:

1. Residential floors start from 6/F to 29/F. There are no 4/F, 13/F, 14/F & 24/F in the Development.
2. Floor-to-floor height (refer to the height between the top surface of the structural slab of a floor and the top surface of the structural slab of its immediate upper floor): 29/F: 11'6" (3.50m)
3. Thickness of the floor slabs (excluding plaster) of each residential property: 29/F: 150mm and 200mm
4. The internal areas of the residential properties on the upper floors will generally be slightly larger than those on the lower floors because of the reducing thickness of the structural walls on the upper floors.
5. Prospective purchasers are advised to conduct on-site visit of the Development for a better understanding of the development site, its surrounding environment and areas and the public facilities nearby.

附註:

1. 住宅單位由6樓至29樓。物業不設4、13、14及24樓。
2. 單位樓面至樓面高度(指該樓層之石屎地台面與上一層石屎地台面之高度距離): 29樓: 11呎6吋(3.50米)
3. 每個住宅物業的樓板(不包括灰泥)的厚度: 29樓: 150毫米及200毫米
4. 因住宅物業的較高樓層的結構牆的厚度遞減, 較高樓層的內部面積, 一般比較低樓層的內部面積稍大。
5. 準買方應親身到訪物業發展項目地盤現場, 以便清楚了解該物業發展項目、其周圍地區、環境及鄰近公共設施。

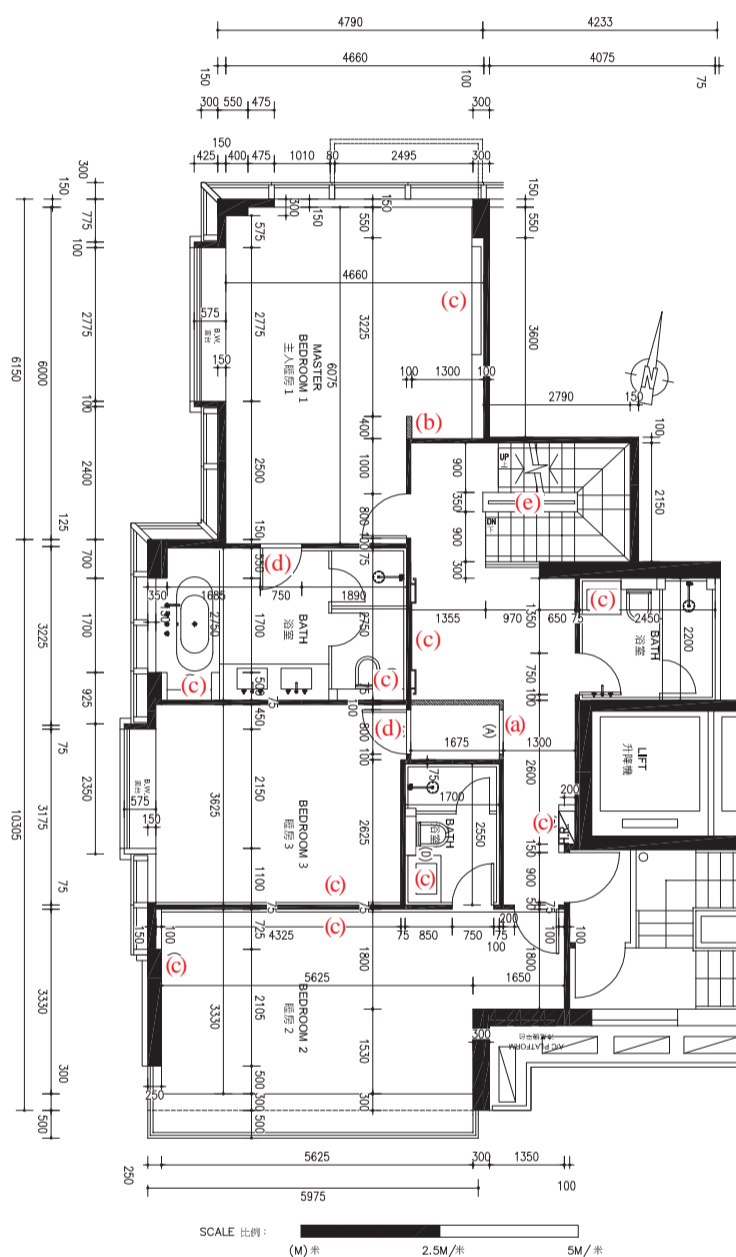
Duplex Unit B of 29/F has been altered in the following ways:

- a) Part of the non-structural internal wall (including any fittings, fixtures, appliances, etc. as installed on such wall) has been demolished and a wooden door have been erected. Please refer to "Fittings, Finishes and Appliances" for details.
- b) A non-structural internal wall has been erected. Please refer to "Fittings, Finishes and Appliances" for details;
- c) Internal walls have been applied furring. Please refer to "Fittings, Finishes and Appliances" for details;
- d) Part of the non-structural internal wall (including any fittings, fixtures, appliances, etc. as installed on such wall) and door have been demolished. A non-structural internal wall and a wooden door have been erected. Please refer to "Fittings, Finishes and Appliances" for details; and
- e) Original baluster has been removed and a glass baluster has been erected.

29樓B複式單位已施行以下改動:

- a) 部分的非結構內牆(包括任何安裝在此非結構內牆的裝置、裝修物料及設備等)已被拆除, 並加建木門。詳情請參閱「裝置、裝修物料及設備」;
- b) 加建非結構內牆。詳情請參閱「裝置、裝修物料及設備」;
- c) 內牆加設圍身。詳情請參閱「裝置、裝修物料及設備」;
- d) 部分的非結構內牆(包括任何安裝在此非結構內牆的裝置、裝修物料及設備等)及門已被拆除。加建非結構內牆及木門。詳情請參閱「裝置、裝修物料及設備」; 及
- e) 原有欄杆已被拆除並加建玻璃欄杆。

## As-built Plan of Duplex Unit B on 29/F 29樓B複式單位實際建造平面圖





Notes:

1. Residential floors start from 6/F to 29/F. There are no 4/F, 13/F, 14/F & 24/F in the Development.
2. The internal areas of the residential properties on the upper floors will generally be slightly larger than those on the lower floors because of the reducing thickness of the structural walls on the upper floors.
3. Prospective purchasers are advised to conduct on-site visit of the Development for a better understanding of the development site, its surrounding environment and areas and the public facilities nearby.

附註:

1. 住宅單位由6樓至29樓。物業不設4、13、14及24樓。
2. 因住宅物業的較高樓層的結構牆的厚度遞減，較高樓層的內部面積，一般比較低樓層的內部面積稍大。
3. 準買方應親身到訪物業發展項目地盤現場，以便清楚了解該物業發展項目、其周圍地區、環境及鄰近公共設施。

**ABBREVIATION 縮寫**

A/C PLATFORM	冷氣機平台	Air-conditioning Platform
BAL.	露台	Balcony
BATH	浴室	Bathroom
B.W.	窗台	Bay Window
C.D.	電纜槽	Cable Duct
DINING	飯廳	Dining Room
DN	下	Down
H.R.	消防喉轆	Hose Reel
KIT.	廚房	Kitchen
LIVING	客廳	Living Room
P.D.	管道槽	Pipe & Drainage Duct
R.S.M.R.C.	垃圾及物料回收房	Refuse Storage and Material Recovery Chamber
STORE	儲物室	Store Room
TEL.D.	電話線槽	Telephone Duct
U.P.	工作平台	Utility Platform
W.C.	洗手間	Water Closet
1/2 HR F.R.P. GLASS DOOR	半小時抗火時效防火玻璃門	1/2 hour Fire Resistance Period glass door
1 HR F.R.P. GLASS WALL	一小時抗火時效防火玻璃牆	1 hour Fire Resistance Period glass wall