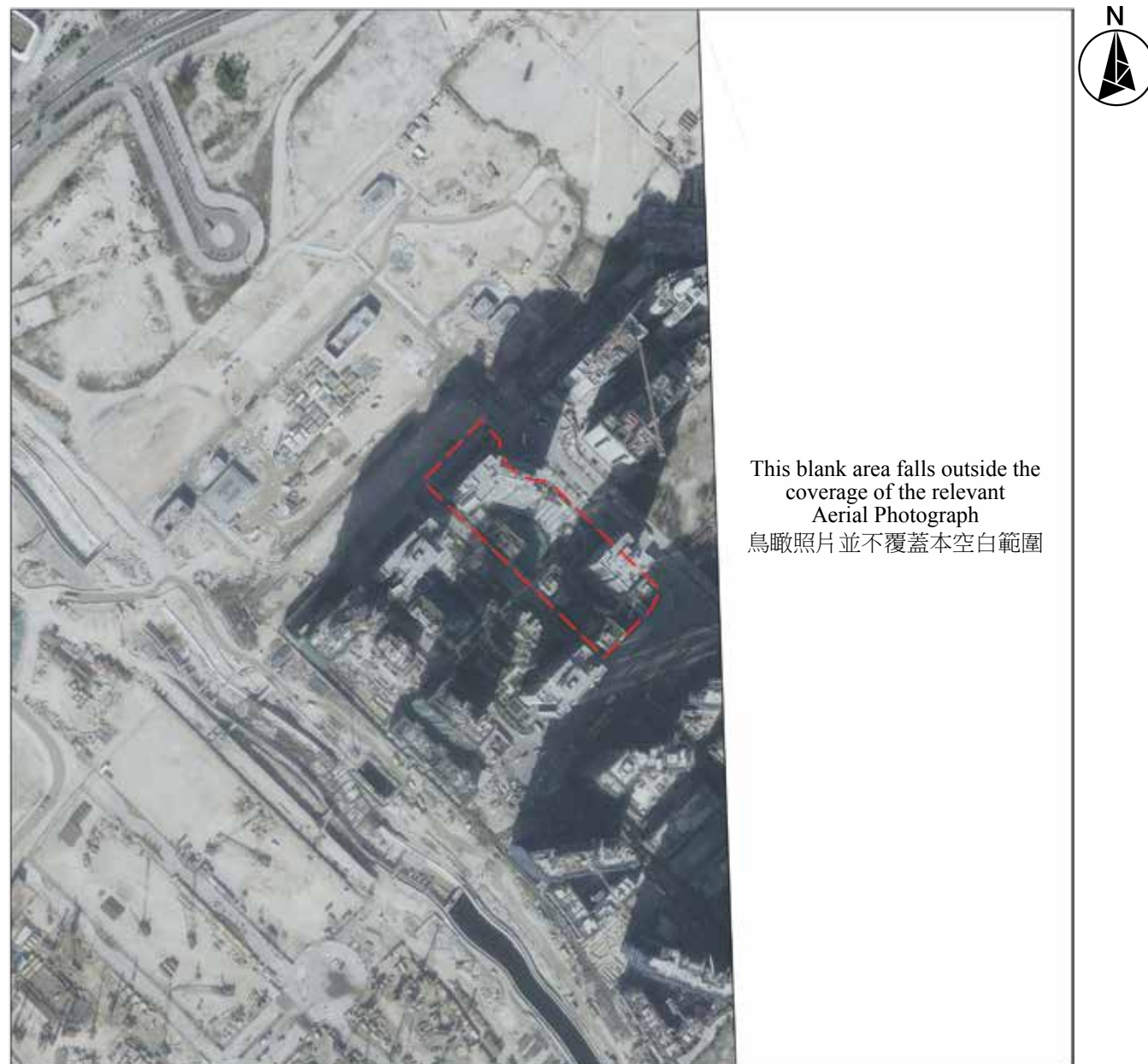



08 | AERIAL PHOTOGRAPH OF THE DEVELOPMENT

發展項目的鳥瞰照片



 Location of the Development
發展項目的位置

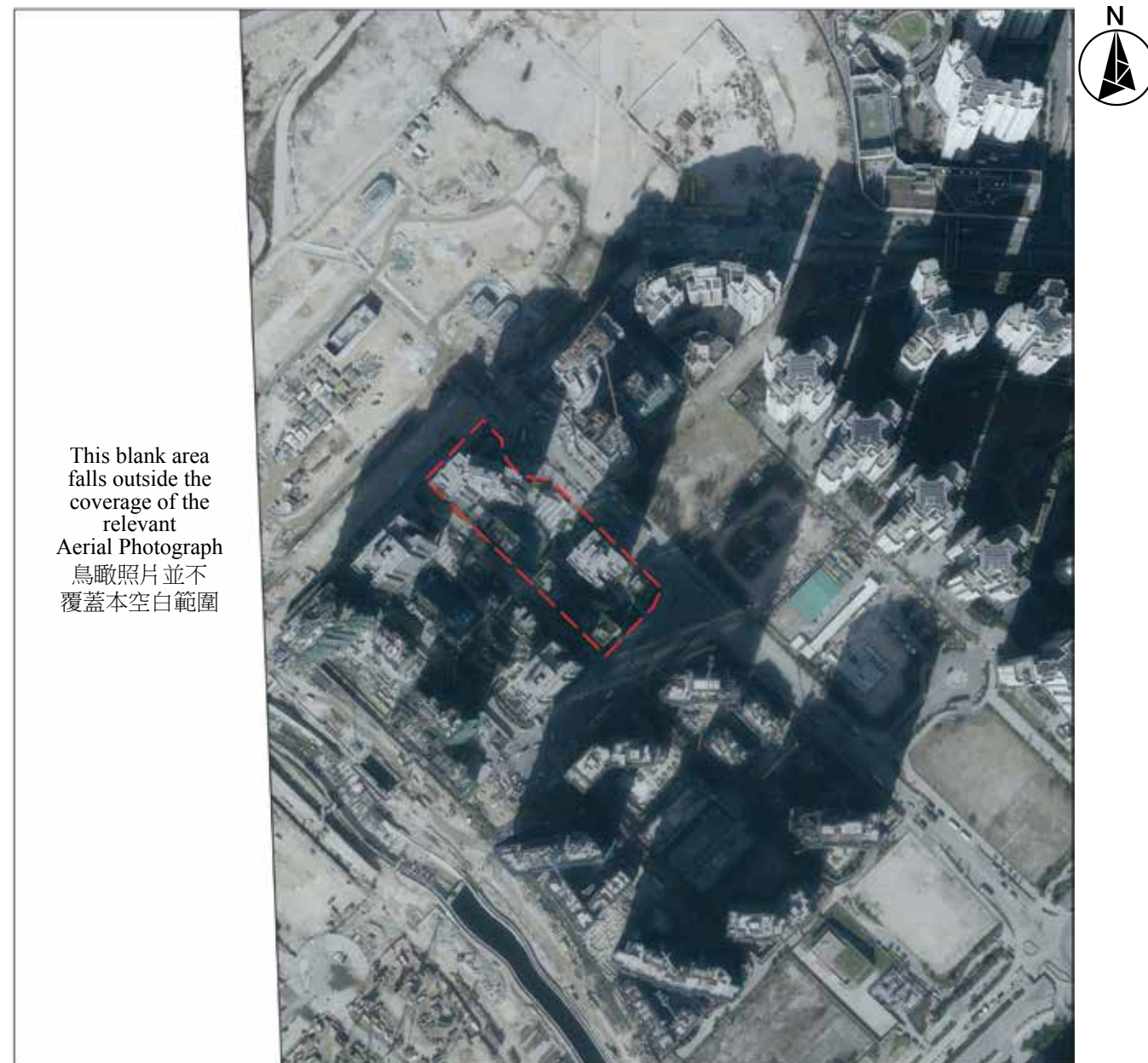
Adopted from part of the aerial photograph taken by the Survey and Mapping Office of Lands Department at a flying height of 6,000 feet, photo no. E030705C, dated 27 December 2017.
摘錄自地政總署測繪處於2017年12月27日在6,000呎飛行高度拍攝之鳥瞰照片，編號為E030705C。


Notes 附註:

- (1) Due to the technical reason that the boundary of the Development is irregular, the aerial photograph has shown more than the area required under the Residential Properties (First-hand Sales) Ordinance (Cap 621).
由於發展項目邊界不規則的技術原因，鳥瞰照片所顯示之範圍多於《一手住宅物業銷售條例》（第621章）所要求的範圍。
- (2) Survey and Mapping Office, Lands Department, The Government of HKSAR © Copyright reserved - reproduction by permission only.
香港特別行政區政府地政總署測繪處©版權所有，未經許可，不得複製。

08 | AERIAL PHOTOGRAPH OF THE DEVELOPMENT

發展項目的鳥瞰照片



 Location of the Development
發展項目的位置

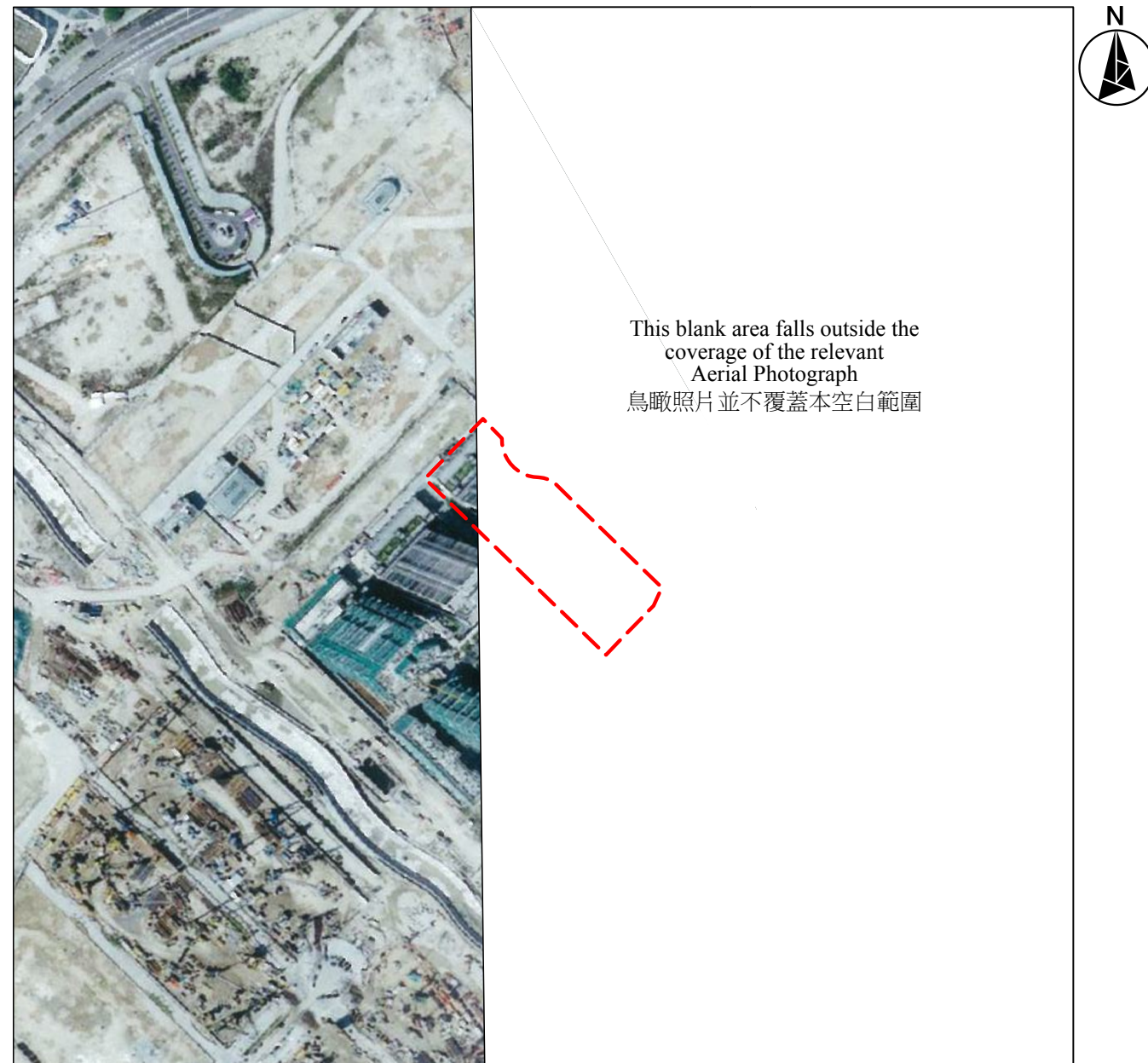
Adopted from part of the aerial photograph taken by the Survey and Mapping Office of Lands Department at a flying height of 6,000 feet, photo no. E030707C, dated 27 December 2017.
摘錄自地政總署測繪處於2017年12月27日在6,000呎飛行高度拍攝之鳥瞰照片，編號為E030707C。


Notes 附註:

- (1) Due to the technical reason that the boundary of the Development is irregular, the aerial photograph has shown more than the area required under the Residential Properties (First-hand Sales) Ordinance (Cap 621).
由於發展項目邊界不規則的技術原因，鳥瞰照片所顯示之範圍多於《一手住宅物業銷售條例》（第621章）所要求的範圍。
- (2) Survey and Mapping Office, Lands Department, The Government of HKSAR © Copyright reserved - reproduction by permission only.
香港特別行政區政府地政總署測繪處©版權所有，未經許可，不得複製。

08 | AERIAL PHOTOGRAPH OF THE DEVELOPMENT

發展項目的鳥瞰照片



 Location of the Development
發展項目的位置

Adopted from part of the aerial photograph taken by the Survey and Mapping Office of Lands Department at a flying height of 6,000 feet, photo no. E034169C, dated 10 March 2018.
摘錄自地政總署測繪處於2018年3月10日在6,000呎飛行高度拍攝之鳥瞰照片，編號為E034169C。


Notes 附註:

- (1) Due to the technical reason that the boundary of the Development is irregular, the aerial photograph has shown more than the area required under the Residential Properties (First-hand Sales) Ordinance (Cap 621).
由於發展項目邊界不規則的技術原因，鳥瞰照片所顯示之範圍多於《一手住宅物業銷售條例》（第621章）所要求的範圍。
- (2) Survey and Mapping Office, Lands Department, The Government of HKSAR © Copyright reserved - reproduction by permission only.
香港特別行政區政府地政總署測繪處©版權所有，未經許可，不得複製。

08 | AERIAL PHOTOGRAPH OF THE DEVELOPMENT

發展項目的鳥瞰照片



 Location of the Development
發展項目的位置

Adopted from part of the aerial photograph taken by the Survey and Mapping Office of Lands Department at a flying height of 6,900 feet, photo no. E045383C, dated 11 September 2018.
摘錄自地政總署測繪處於2018年9月11日在6,900呎飛行高度拍攝之鳥瞰照片，編號為E045383C。

Notes 附註:

- (1) Due to the technical reason that the boundary of the Development is irregular, the aerial photograph has shown more than the area required under the Residential Properties (First-hand Sales) Ordinance (Cap 621).
由於發展項目邊界不規則的技術原因，鳥瞰照片所顯示之範圍多於《一手住宅物業銷售條例》（第621章）所要求的範圍。
- (2) Survey and Mapping Office, Lands Department, The Government of HKSAR © Copyright reserved - reproduction by permission only.
香港特別行政區政府地政總署測繪處©版權所有，未經許可，不得複製。