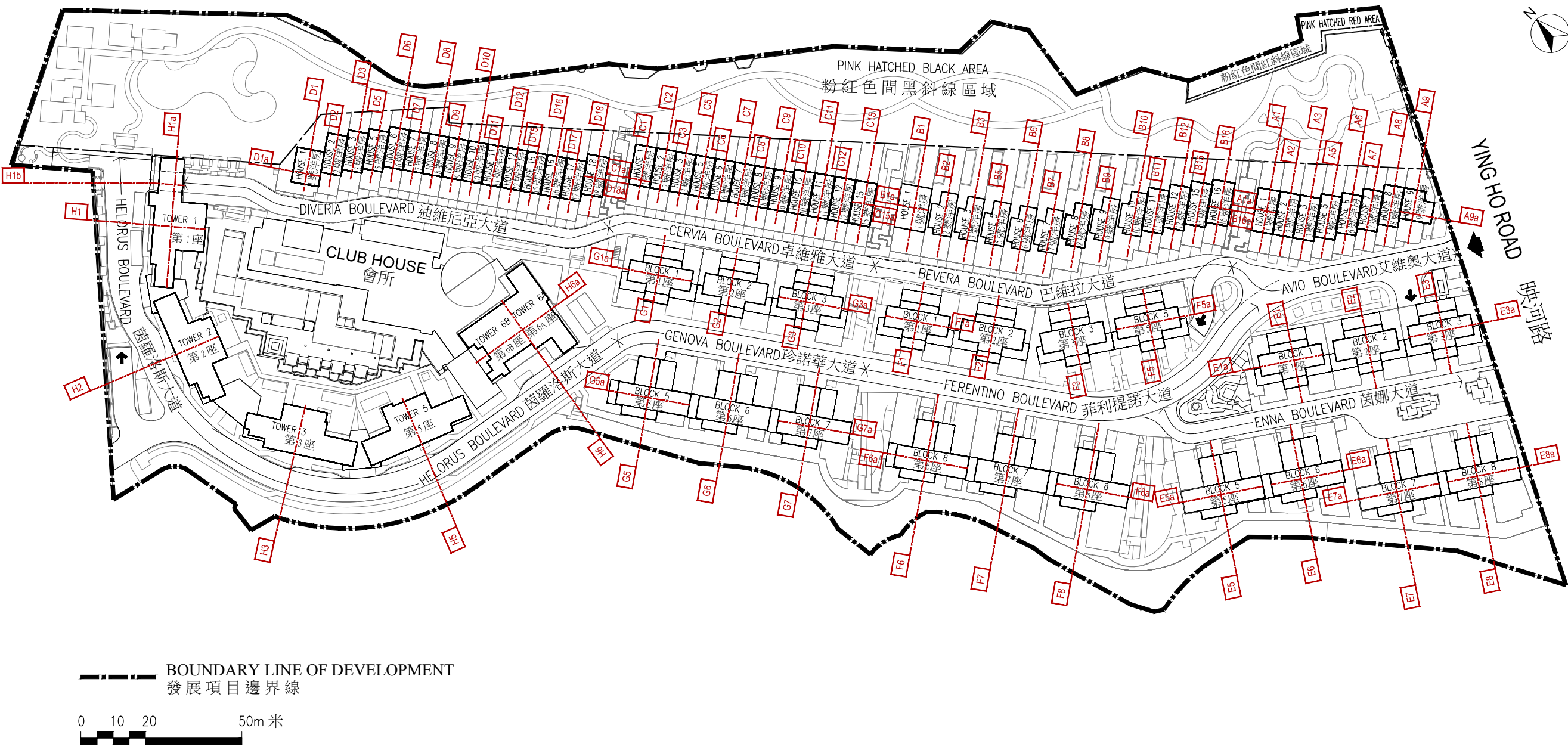


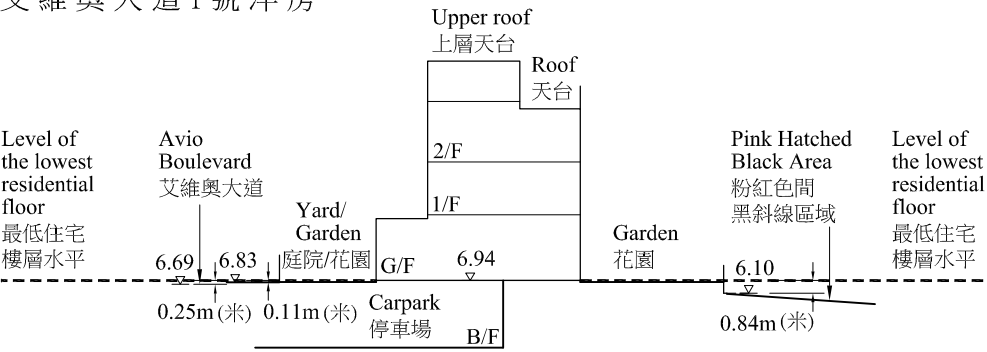
Cross-section plan of building in the Development 發展項目中的建築物的橫截面圖

Key Plan  
索引圖



Cross-section plan of building in the Development 發展項目中的建築物的橫截面圖

House 1,  
Avio Boulevard  
艾維奧大道1號洋房



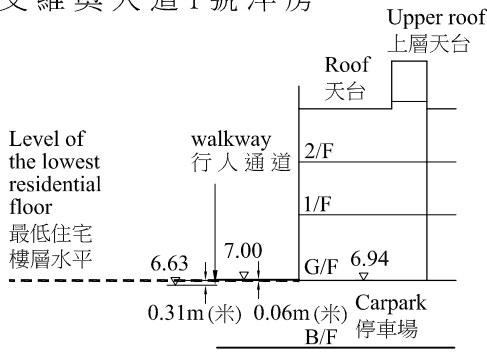
Cross-Section Plan A1  
橫截面圖 A1

----- Dotted line denotes the lowest residential floor.  
虛線為最低住宅樓層水平。

The part of Avio Boulevard adjacent to the building is 6.69 to 6.83 metres above the Hong Kong Principal Datum.  
毗連建築物的一段艾維奧大道為香港主水平基準以上 6.69 至 6.83 米。

The part of Pink Hatched Black Area adjacent to the building is 6.10 metres above the Hong Kong Principal Datum.  
毗連建築物的一段粉紅色間黑斜線區域為香港主水平基準以上 6.10 米。

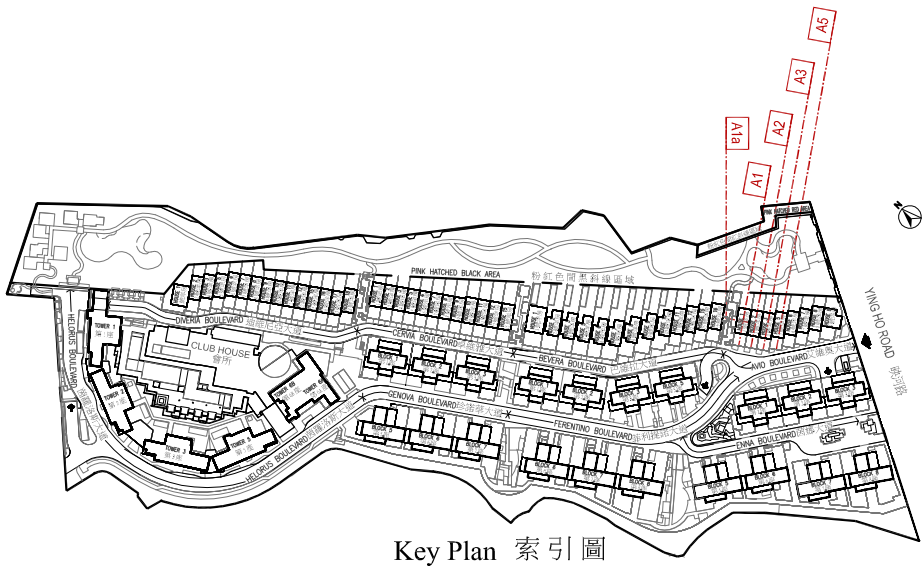
House 1,  
Avio Boulevard  
艾維奧大道1號洋房



Cross-Section Plan A1a  
橫截面圖 A1a

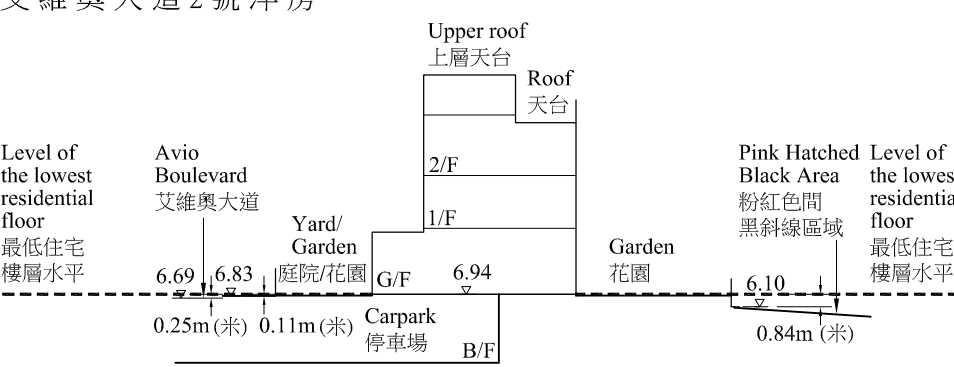
----- Dotted line denotes the lowest residential floor.  
虛線為最低住宅樓層水平。

The part of walkway adjacent to the building is 6.63 to 7.00 metres above the Hong Kong Principal Datum.  
毗連建築物的一段行人通道為香港主水平基準以上 6.63 至 7.00 米。



Key Plan 索引圖

House 2,  
Avio Boulevard  
艾維奧大道2號洋房



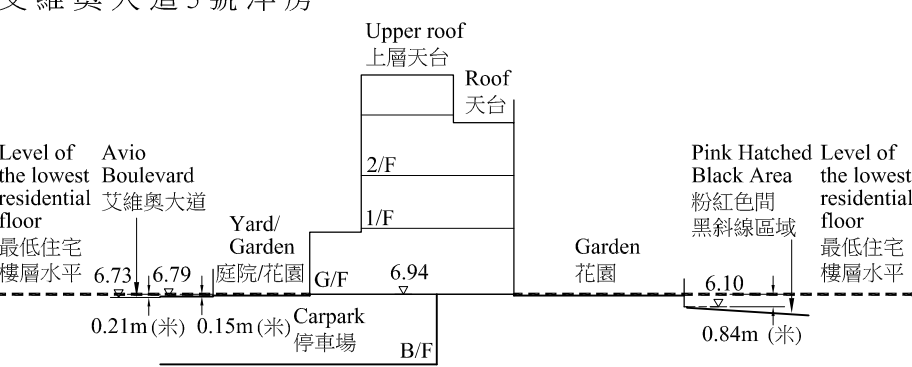
Cross-Section Plan A2  
橫截面圖 A2

----- Dotted line denotes the lowest residential floor.  
虛線為最低住宅樓層水平。

The part of Avio Boulevard adjacent to the building is 6.69 to 6.83 metres above the Hong Kong Principal Datum.  
毗連建築物的一段艾維奧大道為香港主水平基準以上 6.69 至 6.83 米。

The part of Pink Hatched Black Area adjacent to the building is 6.10 metres above the Hong Kong Principal Datum.  
毗連建築物的一段粉紅色間黑斜線區域為香港主水平基準以上 6.10 米。

House 3,  
Avio Boulevard  
艾維奧大道3號洋房



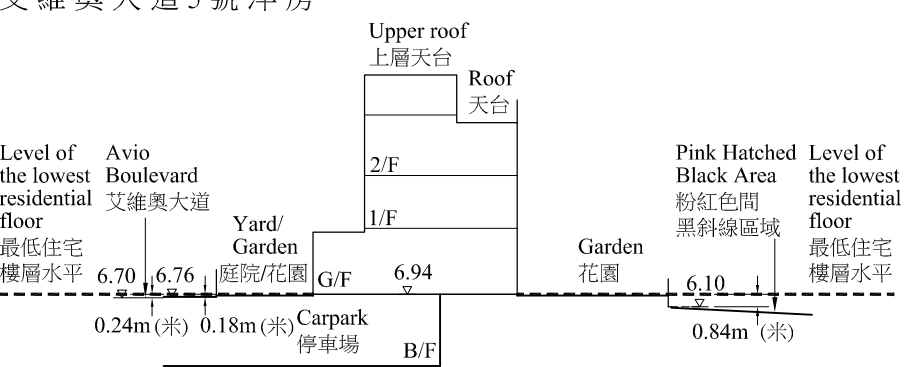
Cross-Section Plan A3  
橫截面圖 A3

----- Dotted line denotes the lowest residential floor.  
虛線為最低住宅樓層水平。

The part of Avio Boulevard adjacent to the building is 6.73 to 6.79 metres above the Hong Kong Principal Datum.  
毗連建築物的一段艾維奧大道為香港主水平基準以上 6.73 至 6.79 米。

The part of Pink Hatched Black Area adjacent to the building is 6.10 metres above the Hong Kong Principal Datum.  
毗連建築物的一段粉紅色間黑斜線區域為香港主水平基準以上 6.10 米。

House 5,  
Avio Boulevard  
艾維奧大道5號洋房



Cross-Section Plan A5  
橫截面圖 A5

----- Dotted line denotes the lowest residential floor.  
虛線為最低住宅樓層水平。

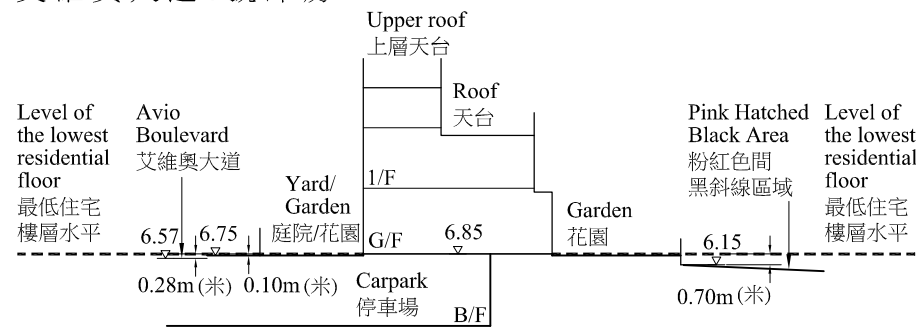
The part of Avio Boulevard adjacent to the building is 6.70 to 6.76 metres above the Hong Kong Principal Datum.  
毗連建築物的一段艾維奧大道為香港主水平基準以上 6.70 至 6.76 米。

The part of Pink Hatched Black Area adjacent to the building is 6.10 metres above the Hong Kong Principal Datum.  
毗連建築物的一段粉紅色間黑斜線區域為香港主水平基準以上 6.10 米。



Cross-section plan of building in the Development 發展項目中的建築物的橫截面圖

House 6,  
Avio Boulevard  
艾維奧大道6號洋房



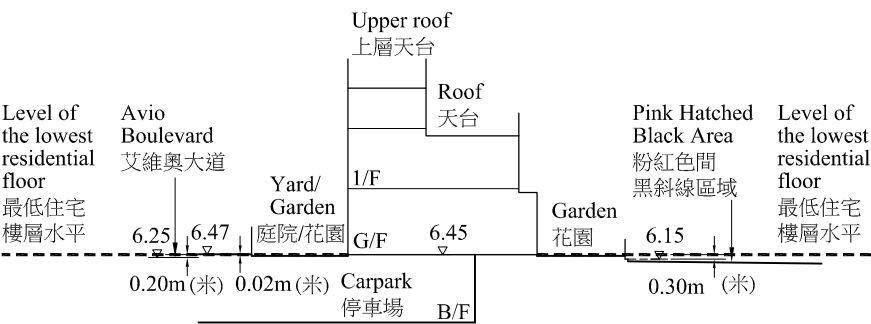
Cross-Section Plan A6  
橫截面圖 A6

----- Dotted line denotes the lowest residential floor.  
虛線為最低住宅樓層水平。

The part of Avio Boulevard adjacent to the building is 6.57 to 6.75 metres above the Hong Kong Principal Datum.  
毗連建築物的一段艾維奧大道為香港主水平基準以上 6.57 至 6.75 米。

The part of Pink Hatched Black Area adjacent to the building is 6.15 metres above the Hong Kong Principal Datum.  
毗連建築物的一段粉紅色間黑斜線區域為香港主水平基準以上 6.15 米。

House 8,  
Avio Boulevard  
艾維奧大道8號洋房



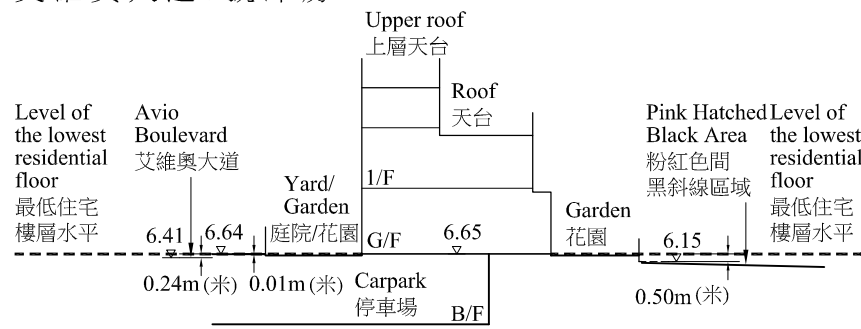
Cross-Section Plan A8  
橫截面圖 A8

----- Dotted line denotes the lowest residential floor.  
虛線為最低住宅樓層水平。

The part of Avio Boulevard adjacent to the building is 6.25 to 6.47 metres above the Hong Kong Principal Datum.  
毗連建築物的一段艾維奧大道為香港主水平基準以上 6.25 至 6.47 米。

The part of Pink Hatched Black Area adjacent to the building is 6.15 metres above the Hong Kong Principal Datum.  
毗連建築物的一段粉紅色間黑斜線區域為香港主水平基準以上 6.15 米。

House 7,  
Avio Boulevard  
艾維奧大道7號洋房



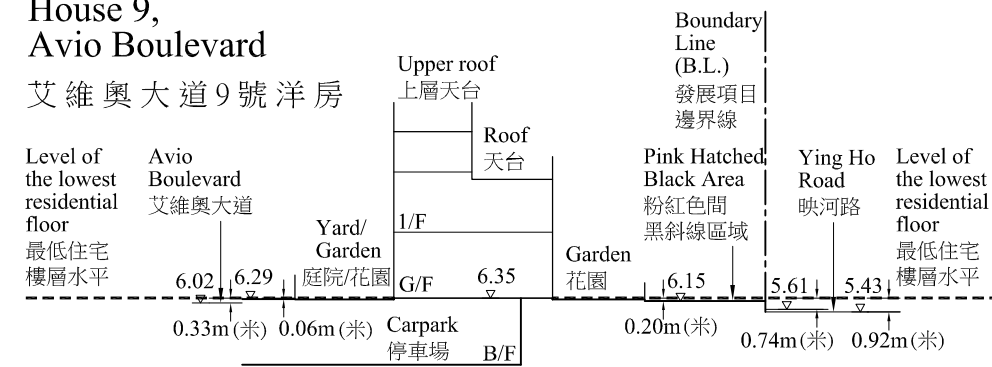
Cross-Section Plan A7  
橫截面圖 A7

----- Dotted line denotes the lowest residential floor.  
虛線為最低住宅樓層水平。

The part of Avio Boulevard adjacent to the building is 6.41 to 6.64 metres above the Hong Kong Principal Datum.  
毗連建築物的一段艾維奧大道為香港主水平基準以上 6.41 至 6.64 米。

The part of Pink Hatched Black Area adjacent to the building is 6.15 metres above the Hong Kong Principal Datum.  
毗連建築物的一段粉紅色間黑斜線區域為香港主水平基準以上 6.15 米。

House 9,  
Avio Boulevard  
艾維奧大道9號洋房



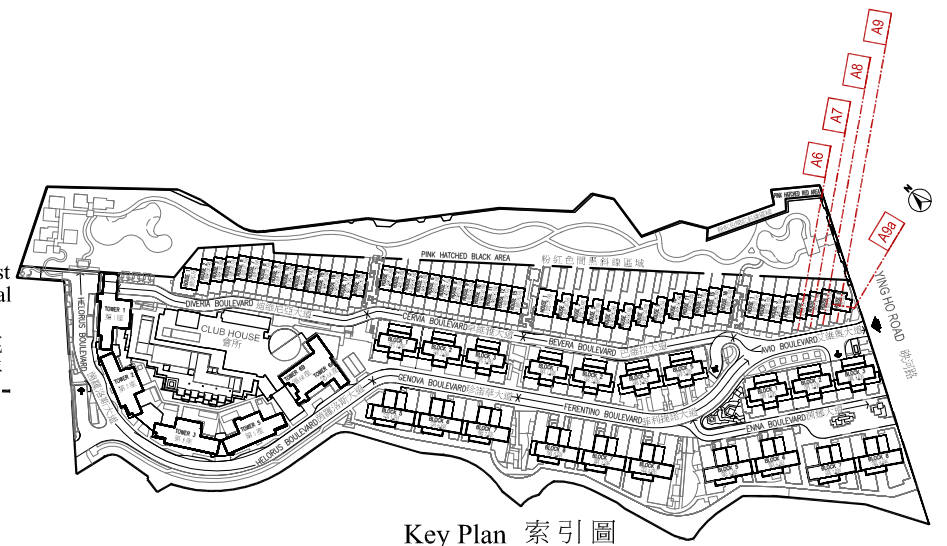
Cross-Section Plan A9  
橫截面圖 A9

----- Dotted line denotes the lowest residential floor.  
虛線為最低住宅樓層水平。

The part of Avio Boulevard adjacent to the building is 6.02 to 6.29 metres above the Hong Kong Principal Datum.  
毗連建築物的一段艾維奧大道為香港主水平基準以上 6.02 至 6.29 米。

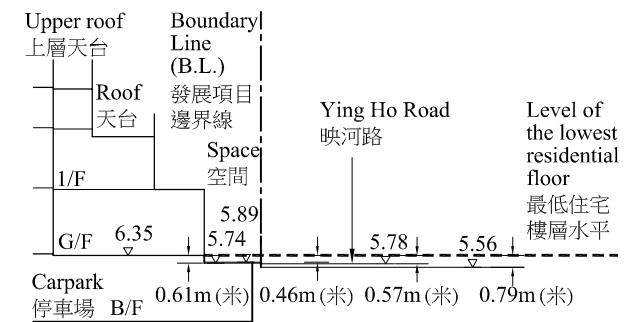
The part of Pink Hatched Black Area adjacent to the building is 6.15 metres above the Hong Kong Principal Datum.  
毗連建築物的一段粉紅色間黑斜線區域為香港主水平基準以上 6.15 米。

The part of Ying Ho Road adjacent to the building is 5.43 to 5.61 metres above the Hong Kong Principal Datum.  
毗連建築物的一段映河路為香港主水平基準以上 5.43 至 5.61 米。



Key Plan 索引圖

House 9,  
Avio Boulevard  
艾維奧大道9號洋房



Cross-Section Plan A9a  
橫截面圖 A9a

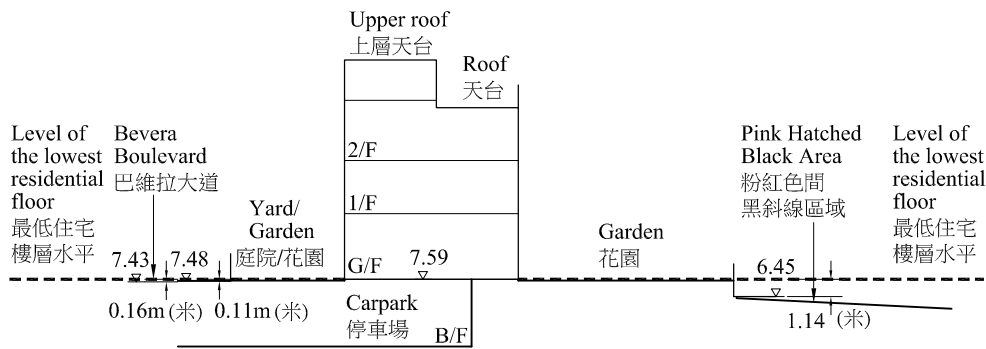
----- Dotted line denotes the lowest residential floor.  
虛線為最低住宅樓層水平。

The part of Space adjacent to the building is 5.74 to 5.89 metres above the Hong Kong Principal Datum.  
毗連建築物的一段空間為香港主水平基準以上 5.74 至 5.89 米。

The part of Ying Ho Road adjacent to the building is 5.56 to 5.78 metres above the Hong Kong Principal Datum.  
毗連建築物的一段映河路為香港主水平基準以上 5.56 至 5.78 米。

# Cross-section plan of building in the Development 發展項目中的建築物的橫截面圖

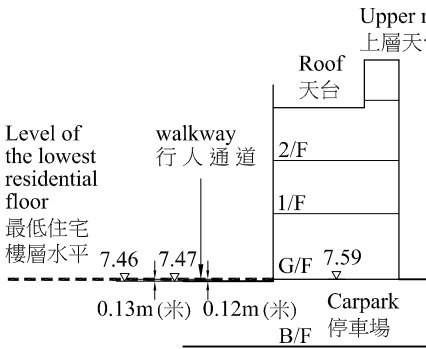
House 1,  
Bevera Boulevard  
巴維拉大道1號洋房



Cross-Section Plan B1  
橫截面圖 B1

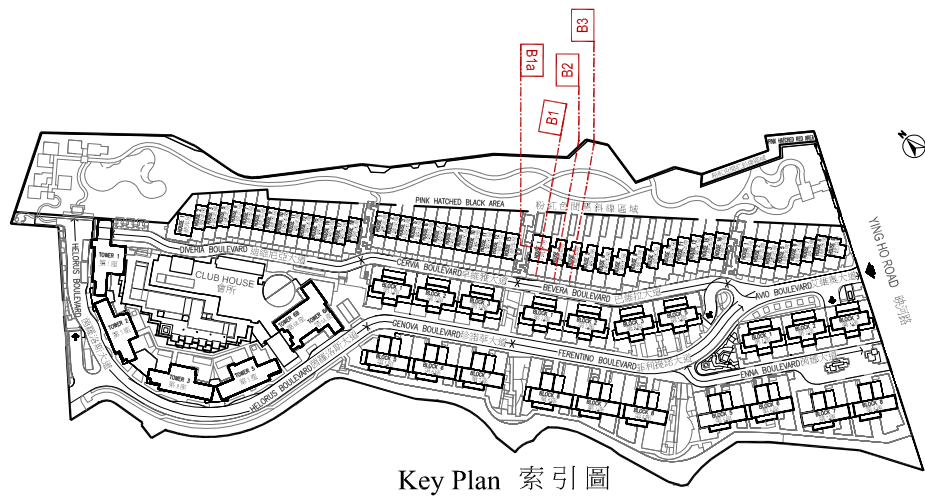
- Dotted line denotes the lowest residential floor.  
虛線為最低住宅樓層水平。
- The part of Bevera Boulevard adjacent to the building is 7.43 to 7.48 metres above the Hong Kong Principal Datum.  
毗連建築物的一段巴維拉大道為香港主水平基準以上 7.43 至 7.48 米。
- The part of Pink Hatched Black Area adjacent to the building is 6.45 metres above the Hong Kong Principal Datum.  
毗連建築物的一段粉紅色間黑斜線區域為香港主水平基準以上 6.45 米。

House 1,  
Bevera Boulevard  
巴維拉大道1號洋房



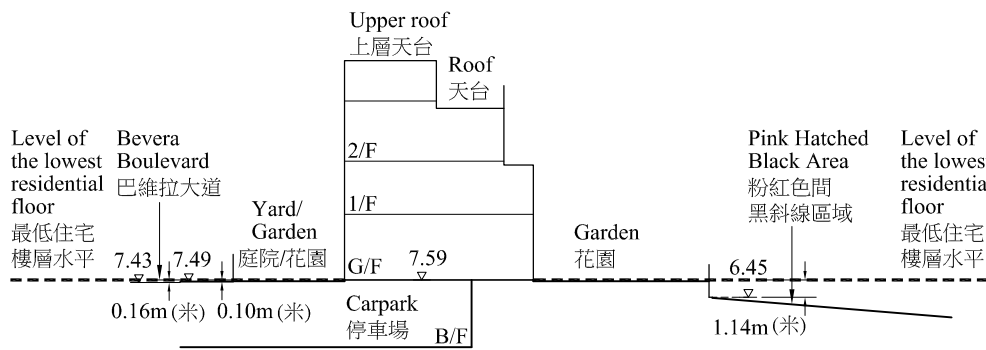
Cross-Section Plan B1a  
橫截面圖 B1a

- Dotted line denotes the lowest residential floor.  
虛線為最低住宅樓層水平。
- The part of walkway adjacent to the building is 7.46 to 7.47 metres above the Hong Kong Principal Datum.  
毗連建築物的一段行人通道為香港主水平基準以上 7.46 至 7.47 米。



Key Plan 索引圖

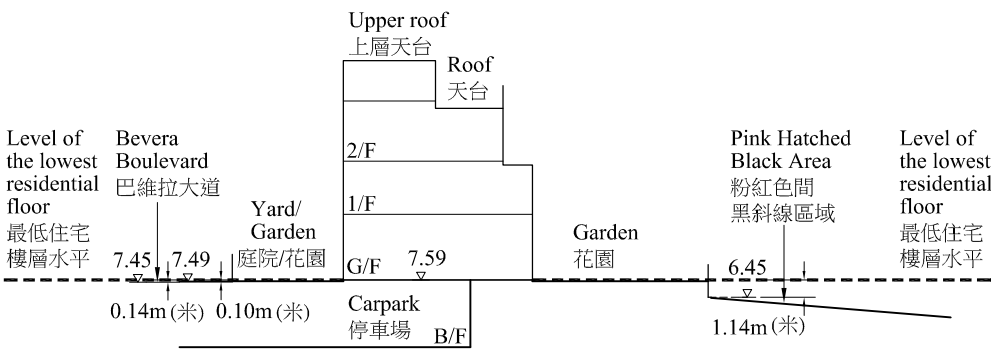
House 2  
Bevera Boulevard  
巴維拉大道2號洋房



Cross-Section Plan B2  
橫截面圖 B2

- Dotted line denotes the lowest residential floor.  
虛線為最低住宅樓層水平。
- The part of Bevera Boulevard adjacent to the building is 7.43 to 7.49 metres above the Hong Kong Principal Datum.  
毗連建築物的一段巴維拉大道為香港主水平基準以上 7.43 至 7.49 米。
- The part of Pink Hatched Black Area adjacent to the building is 6.45 metres above the Hong Kong Principal Datum.  
毗連建築物的一段粉紅色間黑斜線區域為香港主水平基準以上 6.45 米。

House 3,  
Bevera Boulevard  
巴維拉大道3號洋房



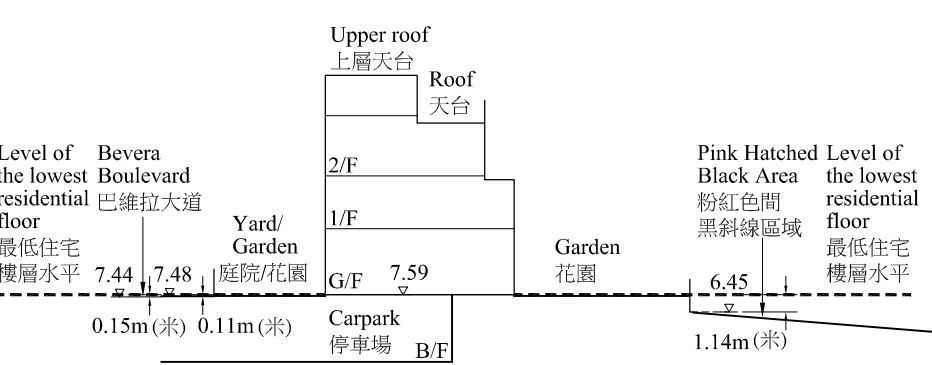
Cross-Section Plan B3  
橫截面圖 B3

- Dotted line denotes the lowest residential floor.  
虛線為最低住宅樓層水平。
- The part of Bevera Boulevard adjacent to the building is 7.45 to 7.49 metres above the Hong Kong Principal Datum.  
毗連建築物的一段巴維拉大道為香港主水平基準以上 7.45 至 7.49 米。
- The part of Pink Hatched Black Area adjacent to the building is 6.45 metres above the Hong Kong Principal Datum.  
毗連建築物的一段粉紅色間黑斜線區域為香港主水平基準以上 6.45 米。



# Cross-section plan of building in the Development 發展項目中的建築物的橫截面圖

House 5,  
Bevera Boulevard  
巴維拉大道5號洋房



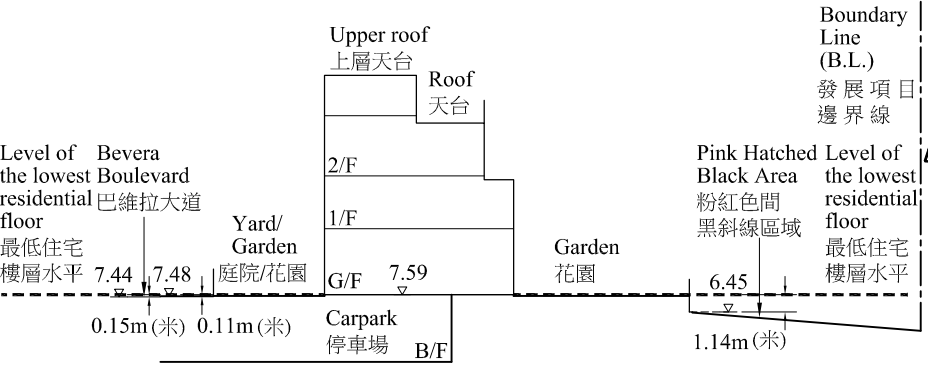
Cross-Section Plan B5  
橫截面圖 B5

----- Dotted line denotes the lowest residential floor.  
虛線為最低住宅樓層水平。

The part of Bevera Boulevard adjacent to the building is 7.44 to 7.48 metres above the Hong Kong Principal Datum.  
毗連建築物的一段巴維拉大道為香港主水平基準以上 7.44 至 7.48 米。

The part of Pink Hatched Black Area adjacent to the building is 6.45 metres above the Hong Kong Principal Datum.  
毗連建築物的一段粉紅色間黑斜線區域為香港主水平基準以上 6.45 米。

House 6,  
Bevera Boulevard  
巴維拉大道6號洋房

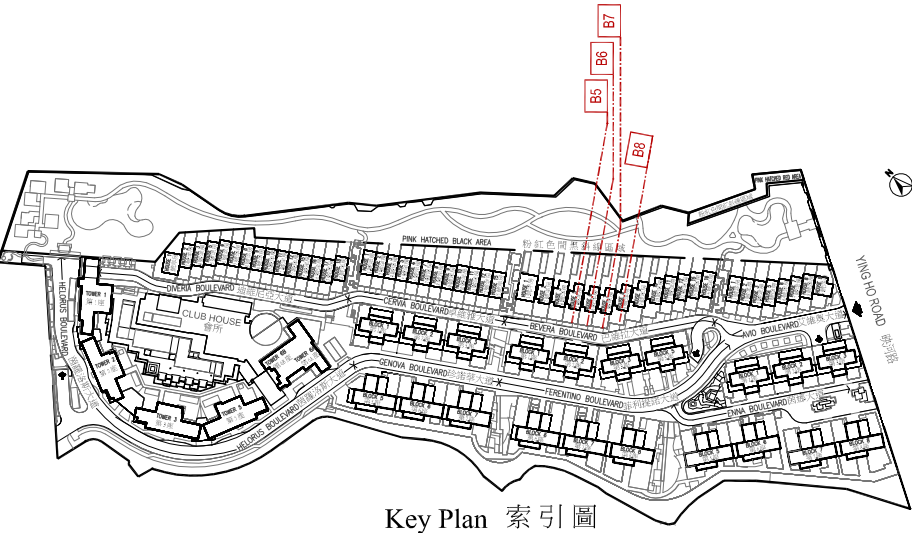


Cross-Section Plan B6  
橫截面圖 B6

----- Dotted line denotes the lowest residential floor.  
虛線為最低住宅樓層水平。

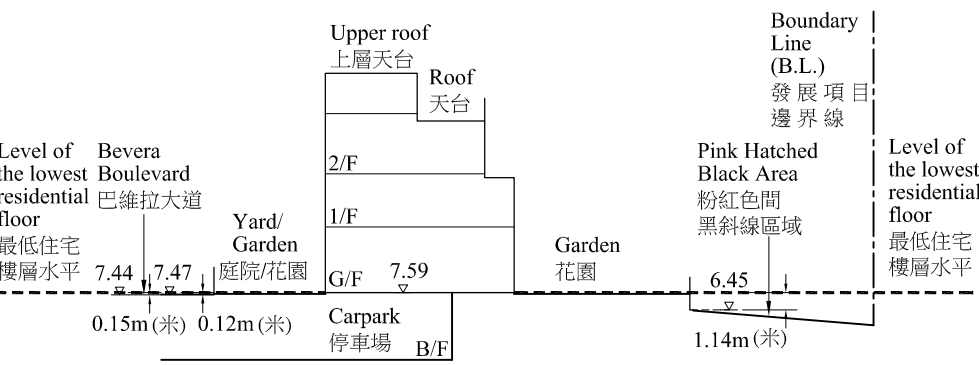
The part of Bevera Boulevard adjacent to the building is 7.44 to 7.48 metres above the Hong Kong Principal Datum.  
毗連建築物的一段巴維拉大道為香港主水平基準以上 7.44 至 7.48 米。

The part of Pink Hatched Black Area adjacent to the building is 6.45 metres above the Hong Kong Principal Datum.  
毗連建築物的一段粉紅色間黑斜線區域為香港主水平基準以上 6.45 米。



Key Plan 索引圖

House 7,  
Bevera Boulevard  
巴維拉大道7號洋房



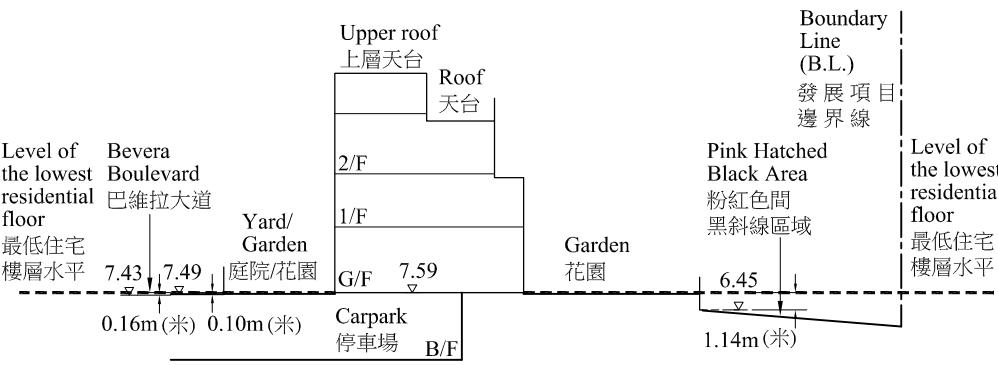
Cross-Section Plan B7  
橫截面圖 B7

----- Dotted line denotes the lowest residential floor.  
虛線為最低住宅樓層水平。

The part of Bevera Boulevard adjacent to the building is 7.44 to 7.47 metres above the Hong Kong Principal Datum.  
毗連建築物的一段巴維拉大道為香港主水平基準以上 7.44 至 7.47 米。

The part of Pink Hatched Black Area adjacent to the building is 6.45 metres above the Hong Kong Principal Datum.  
毗連建築物的一段粉紅色間黑斜線區域為香港主水平基準以上 6.45 米。

House 8,  
Bevera Boulevard  
巴維拉大道8號洋房



Cross-Section Plan B8  
橫截面圖 B8

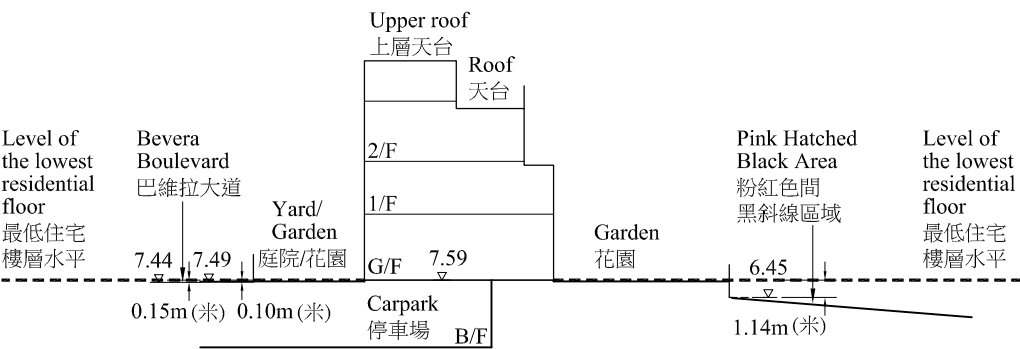
----- Dotted line denotes the lowest residential floor.  
虛線為最低住宅樓層水平。

The part of Bevera Boulevard adjacent to the building is 7.43 to 7.49 metres above the Hong Kong Principal Datum.  
毗連建築物的一段巴維拉大道為香港主水平基準以上 7.43 至 7.49 米。

The part of Pink Hatched Black Area adjacent to the building is 6.45 metres above the Hong Kong Principal Datum.  
毗連建築物的一段粉紅色間黑斜線區域為香港主水平基準以上 6.45 米。

Cross-section plan of building in the Development 發展項目中的建築物的橫截面圖

House 9,  
Bevera Boulevard  
巴維拉大道9號洋房



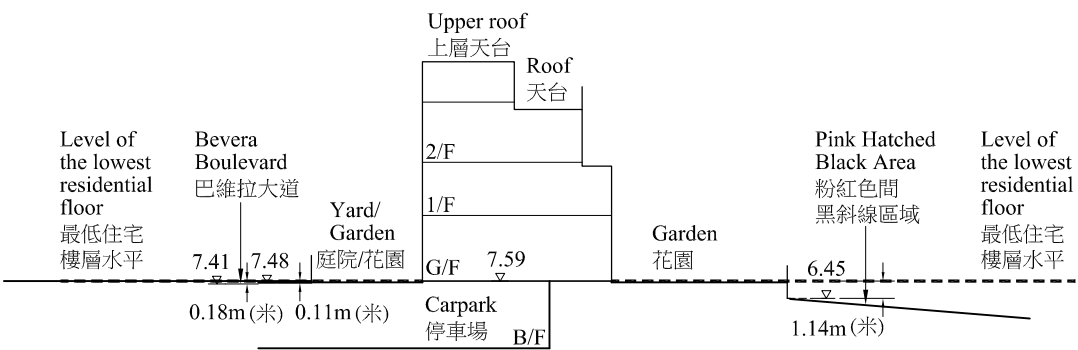
Cross-Section Plan B9  
橫截面圖 B9

----- Dotted line denotes the lowest residential floor.  
虛線為最低住宅樓層水平。

The part of Bevera Boulevard adjacent to the building is 7.44 to 7.49 metres above the Hong Kong Principal Datum.  
毗連建築物的一段巴維拉大道為香港主水平基準以上 7.44 至 7.49 米。

The part of Pink Hatched Black Area adjacent to the building is 6.45 metres above the Hong Kong Principal Datum.  
毗連建築物的一段粉紅色間黑斜線區域為香港主水平基準以上 6.45 米。

House 10,  
Bevera Boulevard  
巴維拉大道10號洋房

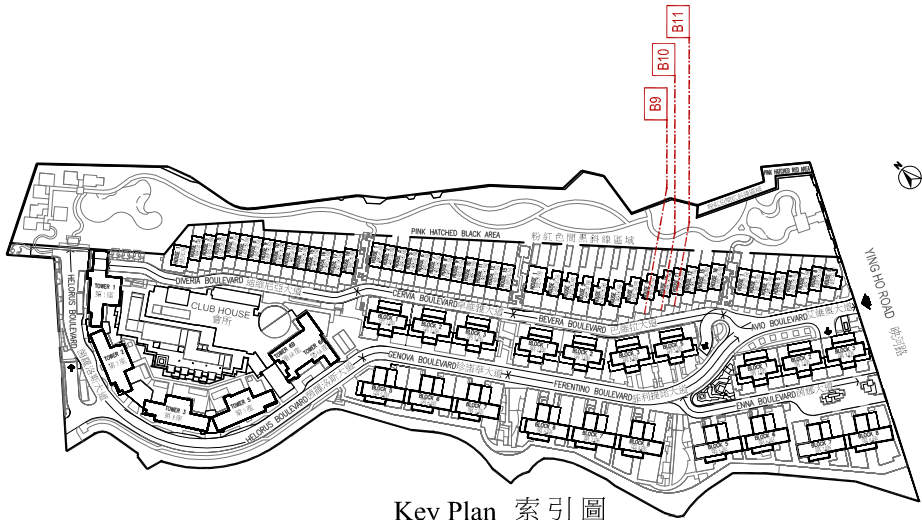


Cross-Section Plan B10  
橫截面圖 B10

----- Dotted line denotes the lowest residential floor.  
虛線為最低住宅樓層水平。

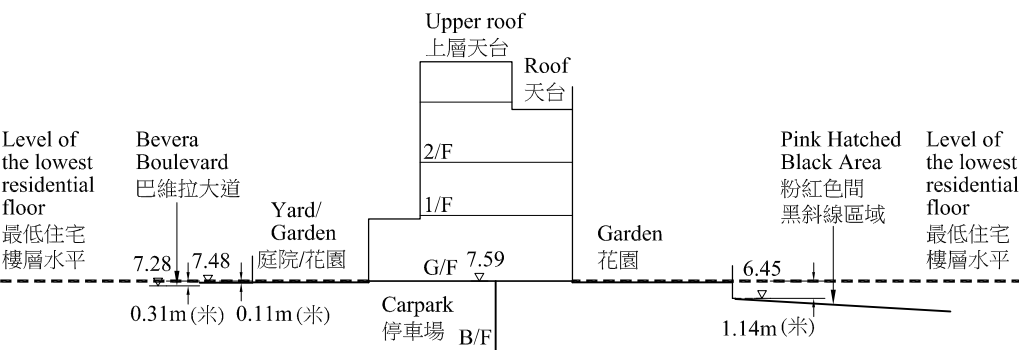
The part of Bevera Boulevard adjacent to the building is 7.41 to 7.48 metres above the Hong Kong Principal Datum.  
毗連建築物的一段巴維拉大道為香港主水平基準以上 7.41 至 7.48 米。

The part of Pink Hatched Black Area adjacent to the building is 6.45 metres above the Hong Kong Principal Datum.  
毗連建築物的一段粉紅色間黑斜線區域為香港主水平基準以上 6.45 米。



Key Plan 索引圖

House 11,  
Bevera Boulevard  
巴維拉大道11號洋房



Cross-Section Plan B11  
橫截面圖 B11

----- Dotted line denotes the lowest residential floor.  
虛線為最低住宅樓層水平。

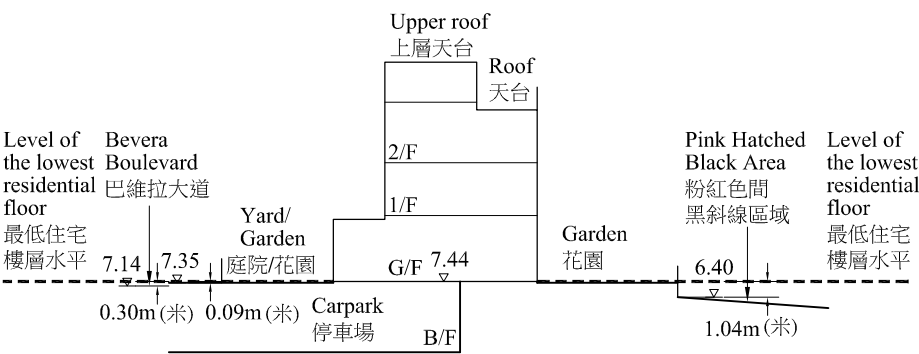
The part of Bevera Boulevard adjacent to the building is 7.28 to 7.48 metres above the Hong Kong Principal Datum.  
毗連建築物的一段巴維拉大道為香港主水平基準以上 7.28 至 7.48 米。

The part of Pink Hatched Black Area adjacent to the building is 6.45 metres above the Hong Kong Principal Datum.  
毗連建築物的一段粉紅色間黑斜線區域為香港主水平基準以上 6.45 米。



# Cross-section plan of building in the Development 發展項目中的建築物的橫截面圖

House 12,  
Bevera Boulevard  
巴維拉大道12號洋房



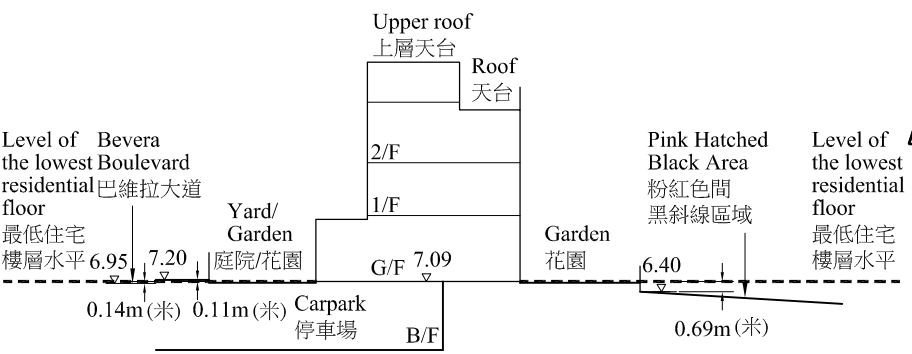
Cross-Section Plan B12  
橫截面圖 B12

----- Dotted line denotes the lowest residential floor.  
虛線為最低住宅樓層水平。

The part of Bevera Boulevard adjacent to the building is 7.14 to 7.35 metres above the Hong Kong Principal Datum.  
毗連建築物的一段巴維拉大道為香港主水平基準以上 7.14 至 7.35 米。

The part of Pink Hatched Black Area adjacent to the building is 6.40 metres above the Hong Kong Principal Datum.  
毗連建築物的一段粉紅色間黑斜線區域為香港主水平基準以上 6.40 米。

House 15,  
Bevera Boulevard  
巴維拉大道15號洋房

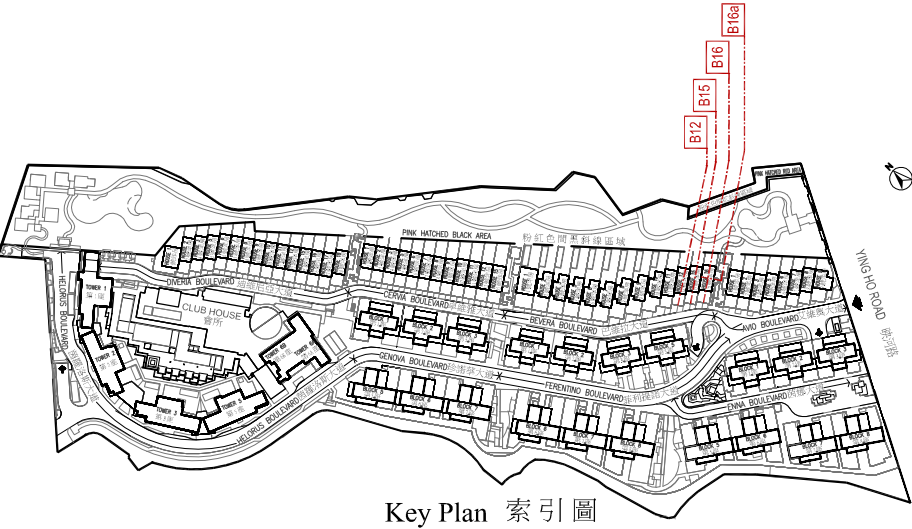


Cross-Section Plan B15  
橫截面圖 B15

----- Dotted line denotes the lowest residential floor.  
虛線為最低住宅樓層水平。

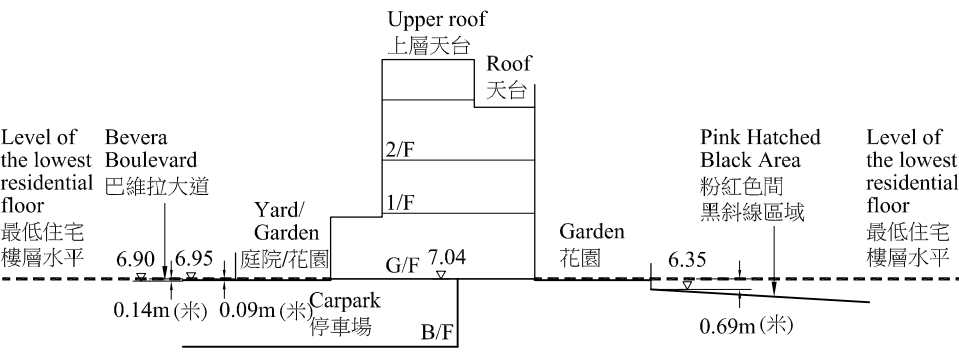
The part of Bevera Boulevard adjacent to the building is 6.95 to 7.20 metres above the Hong Kong Principal Datum.  
毗連建築物的一段巴維拉大道為香港主水平基準以上 6.95 至 7.20 米。

The part of Pink Hatched Black Area adjacent to the building is 6.40 metres above the Hong Kong Principal Datum.  
毗連建築物的一段粉紅色間黑斜線區域為香港主水平基準以上 6.40 米。



Key Plan 索引圖

House 16,  
Bevera Boulevard  
巴維拉大道16號洋房



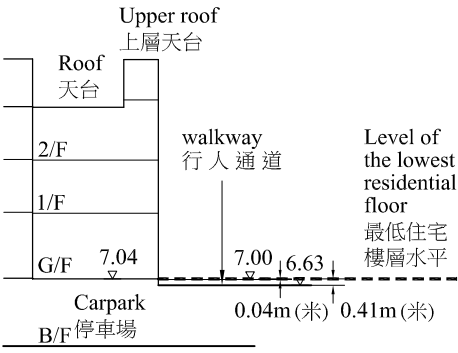
Cross-Section Plan B16  
橫截面圖 B16

----- Dotted line denotes the lowest residential floor.  
虛線為最低住宅樓層水平。

The part of Bevera Boulevard adjacent to the building is 6.90 to 6.95 metres above the Hong Kong Principal Datum.  
毗連建築物的一段巴維拉大道為香港主水平基準以上 6.90 至 6.95 米。

The part of Pink Hatched Black Area adjacent to the building is 6.35 metres above the Hong Kong Principal Datum.  
毗連建築物的一段粉紅色間黑斜線區域為香港主水平基準以上 6.35 米。

House 16,  
Bevera Boulevard  
巴維拉大道16號洋房



Cross-Section Plan B16a  
橫截面圖 B16a

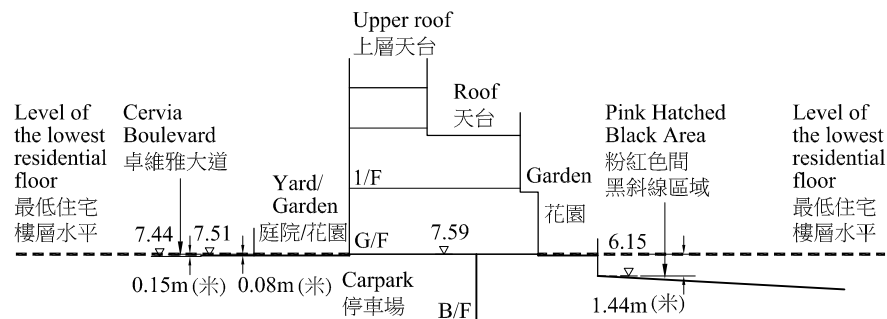
----- Dotted line denotes the lowest residential floor.  
虛線為最低住宅樓層水平。

The part of walkway adjacent to the building is 6.63 to 7.00 metres above the Hong Kong Principal Datum.  
毗連建築物的一段行人通道為香港主水平基準以上 6.63 至 7.00 米。

## Cross-section plan of building in the Development 發展項目中的建築物的橫截面圖

House 1,  
Cervia Boulevard

卓維雅大道1號洋房



Cross-Section Plan C1  
橫截面圖 C1

---- Dotted line denotes the lowest residential floor.  
虛線為最低住宅樓層水平。

The part of Cervia Boulevard adjacent to the building is 7.44 to 7.51 metres above the Hong Kong Principal Datum.

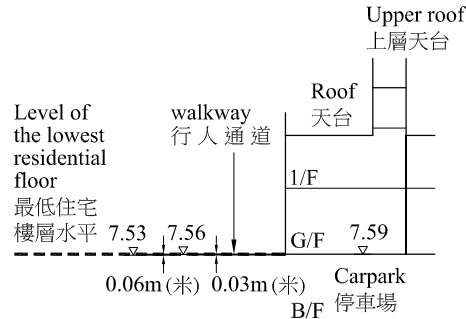
毗連建築物的一段卓維雅大道為香港主水平基準以上7.44至7.51米。

The part of Pink Hatched Black Area adjacent to the building is 6.15 metres above the Hong Kong Principal Datum.

毗連建築物的一段粉紅色間黑斜線區域為香港主水平基準以上6.15米。

House 1,  
Cervia Boulevard

卓維雅大道1號洋房

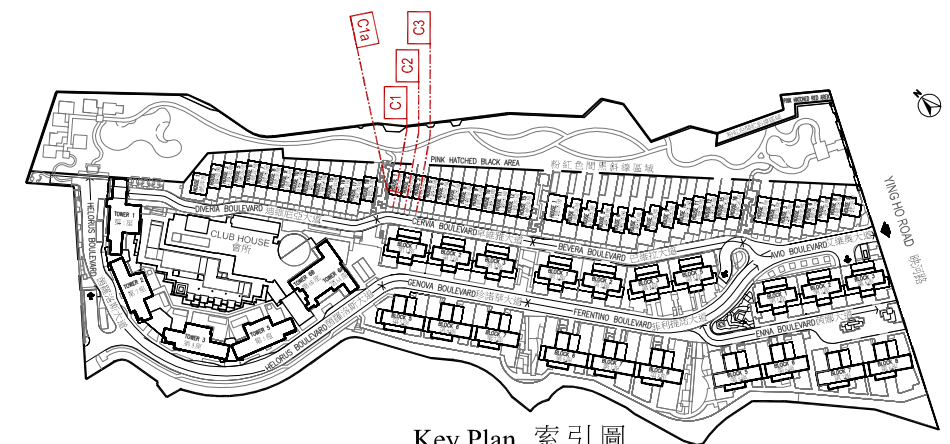


Cross-Section Plan C1a  
橫截面圖 C1a

---- Dotted line denotes the lowest residential floor.  
虛線為最低住宅樓層水平。

The part of walkway adjacent to the building is 7.53 to 7.56 metres above the Hong Kong Principal Datum.

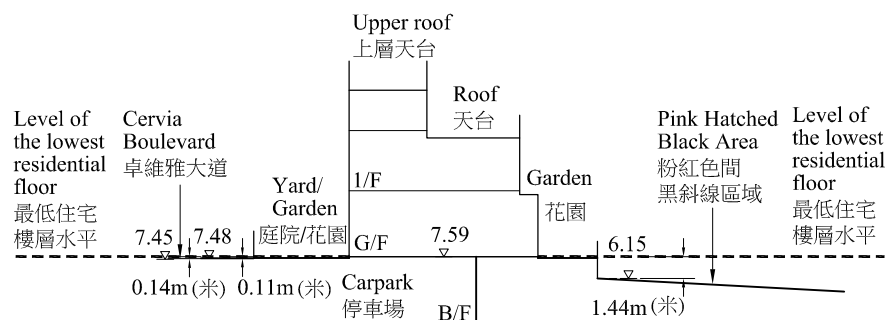
毗連建築物的一段行人通道為香港主水平基準以上7.53至7.56米。



Key Plan 索引圖

House 2,  
Cervia Boulevard

卓維雅大道2號洋房



Cross-Section Plan C2  
橫截面圖 C2

---- Dotted line denotes the lowest residential floor.  
虛線為最低住宅樓層水平。

The part of Cervia Boulevard adjacent to the building is 7.45 to 7.48 metres above the Hong Kong Principal Datum.

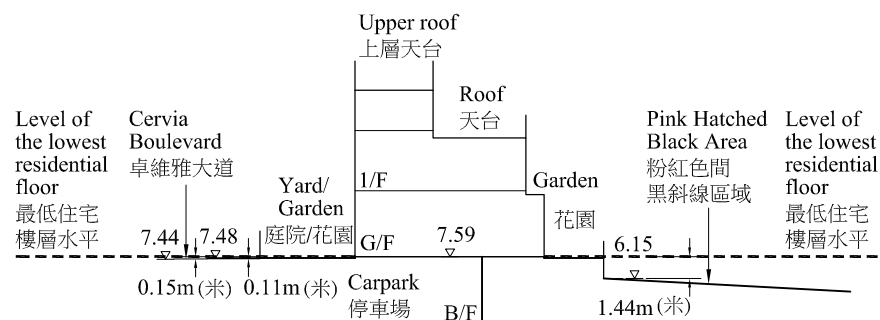
毗連建築物的一段卓維雅大道為香港主水平基準以上7.45至7.48米。

The part of Pink Hatched Black Area adjacent to the building is 6.15 metres above the Hong Kong Principal Datum.

毗連建築物的一段粉紅色間黑斜線區域為香港主水平基準以上6.15米。

House 3,  
Cervia Boulevard

卓維雅大道3號洋房



Cross-Section Plan C3  
橫截面圖 C3

---- Dotted line denotes the lowest residential floor.  
虛線為最低住宅樓層水平。

The part of Cervia Boulevard adjacent to the building is 7.44 to 7.48 metres above the Hong Kong Principal Datum.

毗連建築物的一段卓維雅大道為香港主水平基準以上7.44至7.48米。

The part of Pink Hatched Black Area adjacent to the building is 6.15 metres above the Hong Kong Principal Datum.

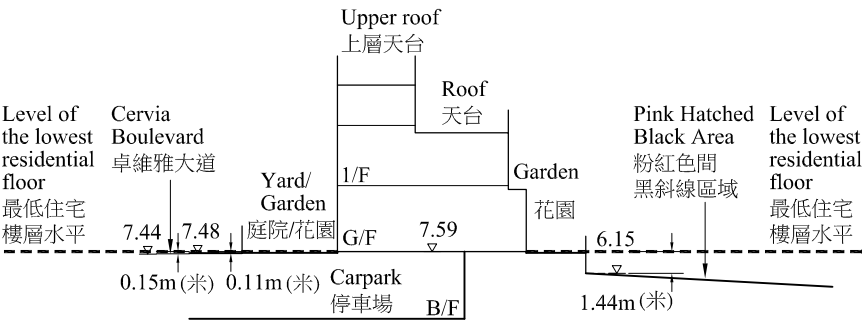
毗連建築物的一段粉紅色間黑斜線區域為香港主水平基準以上6.15米。



# Cross-section plan of building in the Development 發展項目中的建築物的橫截面圖

## House 5, Cervia Boulevard

卓維雅大道5號洋房



Cross-Section Plan C5  
橫截面圖 C5

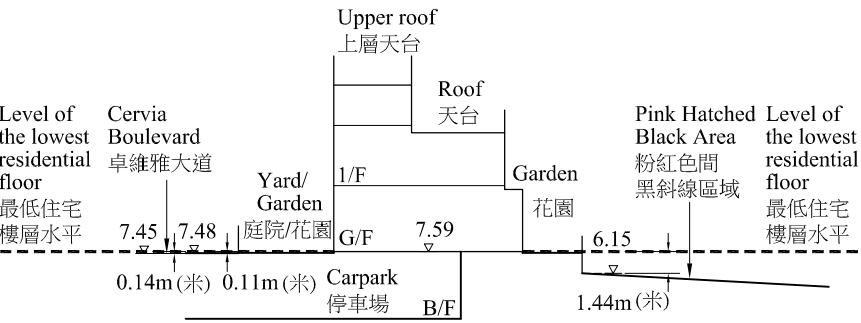
----- Dotted line denotes the lowest residential floor.  
虛線為最低住宅樓層水平。

The part of Cervia Boulevard adjacent to the building is 7.44 to 7.48 metres above the Hong Kong Principal Datum.  
毗連建築物的一段卓維雅大道為香港主水平基準以上 7.44 至 7.48 米。

The part of Pink Hatched Black Area adjacent to the building is 6.15 metres above the Hong Kong Principal Datum.  
毗連建築物的一段粉紅色間黑斜線區域為香港主水平基準以上 6.15 米。

## House 6, Cervia Boulevard

卓維雅大道6號洋房

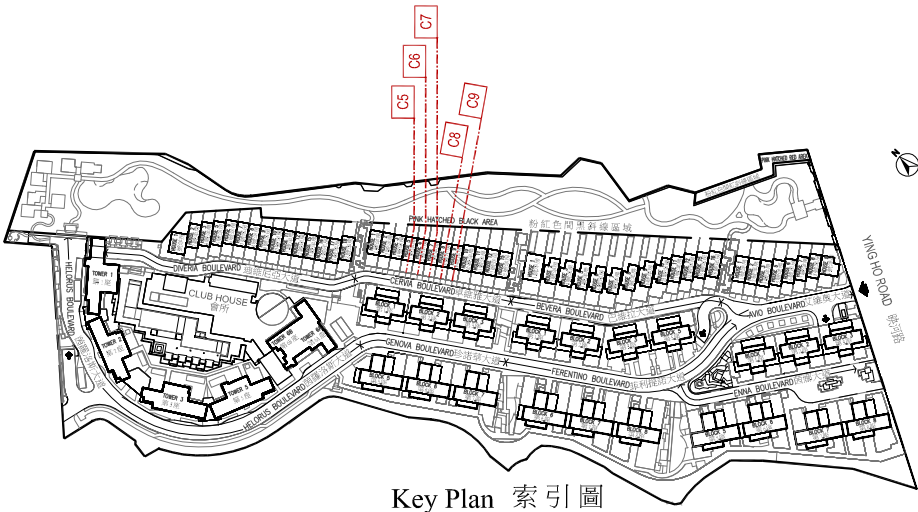


Cross-Section Plan C6  
橫截面圖 C6

----- Dotted line denotes the lowest residential floor.  
虛線為最低住宅樓層水平。

The part of Cervia Boulevard adjacent to the building is 7.45 to 7.48 metres above the Hong Kong Principal Datum.  
毗連建築物的一段卓維雅大道為香港主水平基準以上 7.45 至 7.48 米。

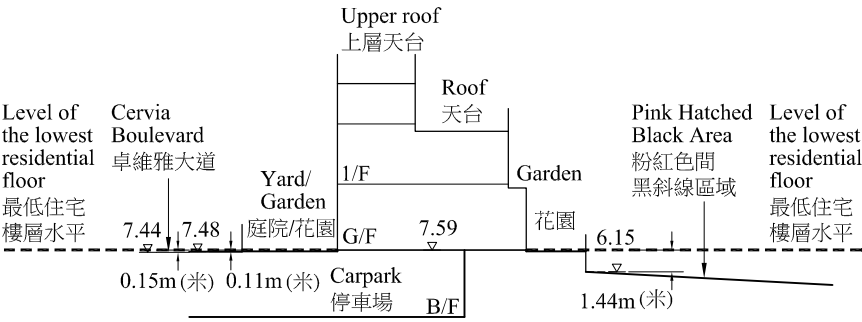
The part of Pink Hatched Black Area adjacent to the building is 6.15 metres above the Hong Kong Principal Datum.  
毗連建築物的一段粉紅色間黑斜線區域為香港主水平基準以上 6.15 米。



Key Plan 索引圖

## House 7, Cervia Boulevard

卓維雅大道7號洋房



Cross-Section Plan C7  
橫截面圖 C7

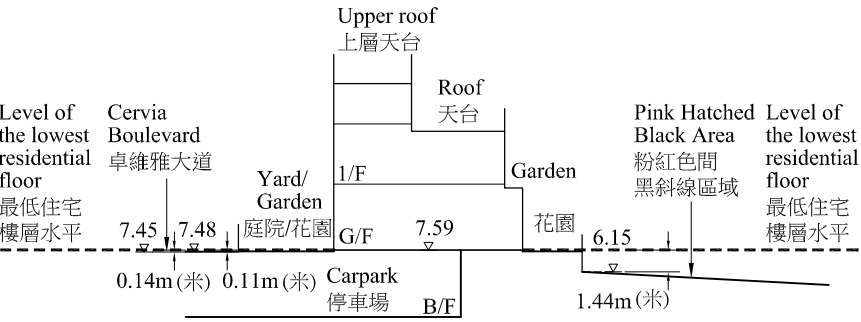
----- Dotted line denotes the lowest residential floor.  
虛線為最低住宅樓層水平。

The part of Cervia Boulevard adjacent to the building is 7.44 to 7.48 metres above the Hong Kong Principal Datum.  
毗連建築物的一段卓維雅大道為香港主水平基準以上 7.44 至 7.48 米。

The part of Pink Hatched Black Area adjacent to the building is 6.15 metres above the Hong Kong Principal Datum.  
毗連建築物的一段粉紅色間黑斜線區域為香港主水平基準以上 6.15 米。

## House 8, Cervia Boulevard

卓維雅大道8號洋房



Cross-Section Plan C8  
橫截面圖 C8

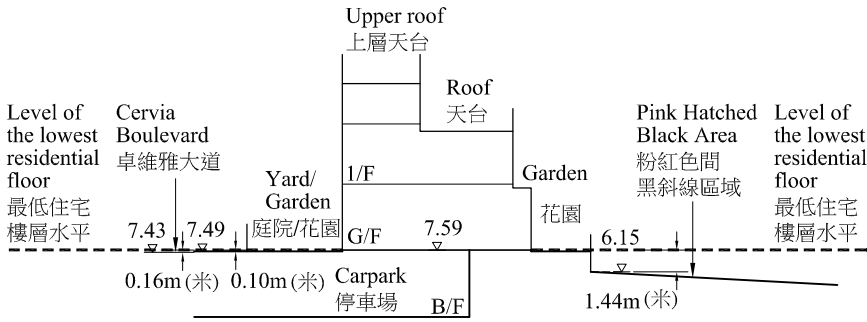
----- Dotted line denotes the lowest residential floor.  
虛線為最低住宅樓層水平。

The part of Cervia Boulevard adjacent to the building is 7.45 to 7.48 metres above the Hong Kong Principal Datum.  
毗連建築物的一段卓維雅大道為香港主水平基準以上 7.45 至 7.48 米。

The part of Pink Hatched Black Area adjacent to the building is 6.15 metres above the Hong Kong Principal Datum.  
毗連建築物的一段粉紅色間黑斜線區域為香港主水平基準以上 6.15 米。

## House 9, Cervia Boulevard

卓維雅大道1號至9號洋房



Cross-Section Plan C9  
橫截面圖 C9

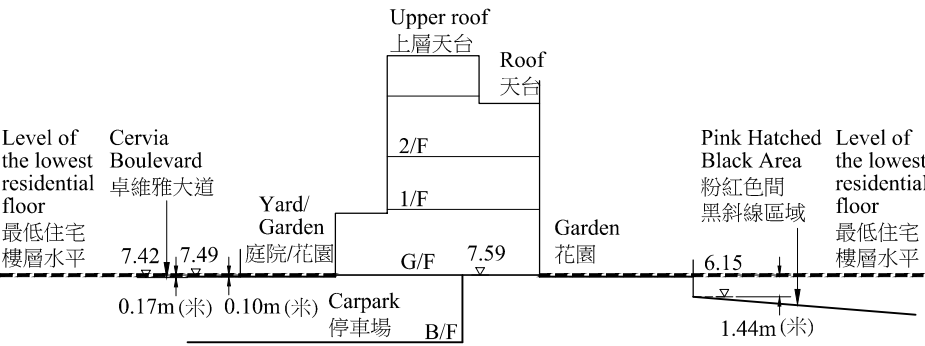
----- Dotted line denotes the lowest residential floor.  
虛線為最低住宅樓層水平。

The part of Cervia Boulevard adjacent to the building is 7.43 to 7.49 metres above the Hong Kong Principal Datum.  
毗連建築物的一段卓維雅大道為香港主水平基準以上 7.43 至 7.49 米。

The part of Pink Hatched Black Area adjacent to the building is 6.15 metres above the Hong Kong Principal Datum.  
毗連建築物的一段粉紅色間黑斜線區域為香港主水平基準以上 6.15 米。

Cross-section plan of building in the Development 發展項目中的建築物的橫截面圖

House 10,  
Cervia Boulevard  
卓維雅大道10號洋房



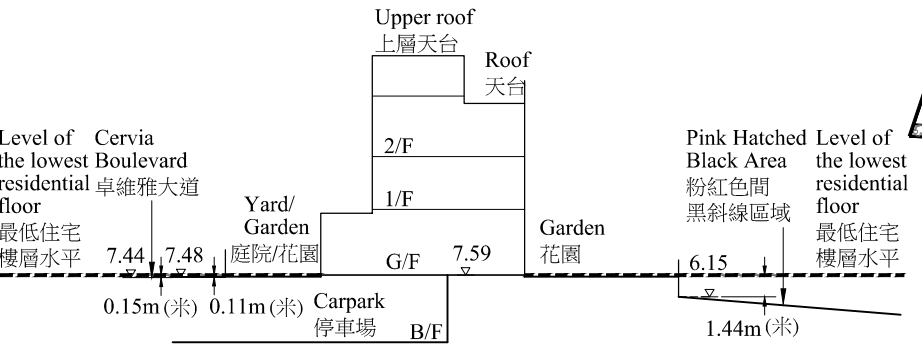
Cross-Section Plan C10  
橫截面圖 C10

----- Dotted line denotes the lowest residential floor.  
虛線為最低住宅樓層水平。

The part of Cervia Boulevard adjacent to the building is 7.42 to 7.49 metres above the Hong Kong Principal Datum.  
毗連建築物的一段卓維雅大道為香港主水平基準以上 7.42 至 7.49 米。

The part of Pink Hatched Black Area adjacent to the building is 6.15 metres above the Hong Kong Principal Datum.  
毗連建築物的一段粉紅色間黑斜線區域為香港主水平基準以上 6.15 米。

House 11,  
Cervia Boulevard  
卓維雅大道11號洋房

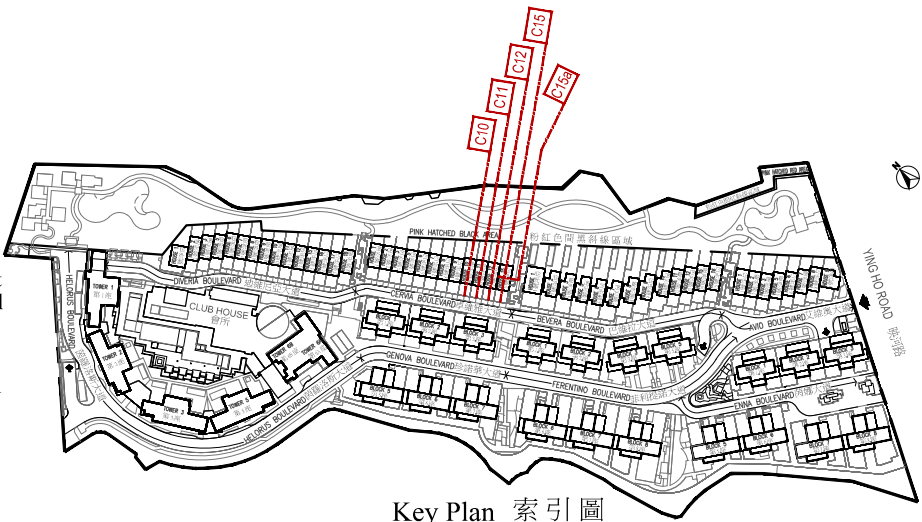


Cross-Section Plan C11  
橫截面圖 C11

----- Dotted line denotes the lowest residential floor.  
虛線為最低住宅樓層水平。

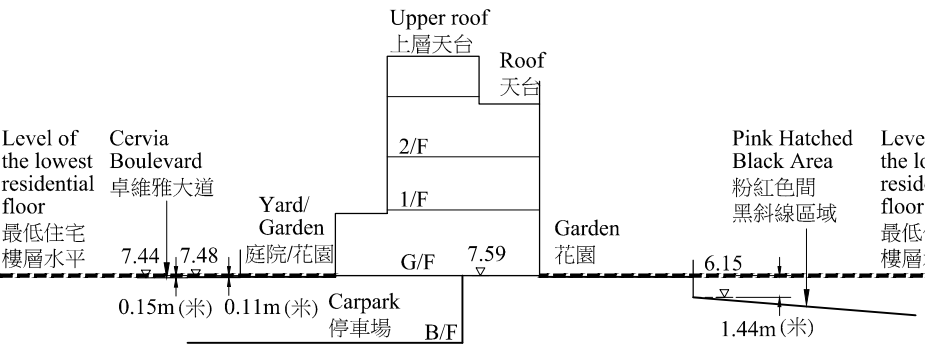
The part of Cervia Boulevard adjacent to the building is 7.44 to 7.48 metres above the Hong Kong Principal Datum.  
毗連建築物的一段卓維雅大道為香港主水平基準以上 7.44 至 7.48 米。

The part of Pink Hatched Black Area adjacent to the building is 6.15 metres above the Hong Kong Principal Datum.  
毗連建築物的一段粉紅色間黑斜線區域為香港主水平基準以上 6.15 米。



Key Plan 索引圖

House 12,  
Cervia Boulevard  
卓維雅大道12號洋房



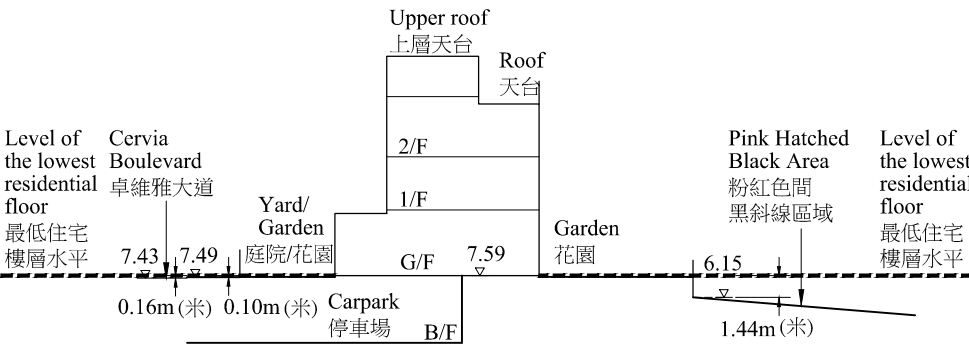
Cross-Section Plan C12  
橫截面圖 C12

----- Dotted line denotes the lowest residential floor.  
虛線為最低住宅樓層水平。

The part of Cervia Boulevard adjacent to the building is 7.44 to 7.48 metres above the Hong Kong Principal Datum.  
毗連建築物的一段卓維雅大道為香港主水平基準以上 7.44 至 7.48 米。

The part of Pink Hatched Black Area adjacent to the building is 6.15 metres above the Hong Kong Principal Datum.  
毗連建築物的一段粉紅色間黑斜線區域為香港主水平基準以上 6.15 米。

House 15,  
Cervia Boulevard  
卓維雅大道15號洋房



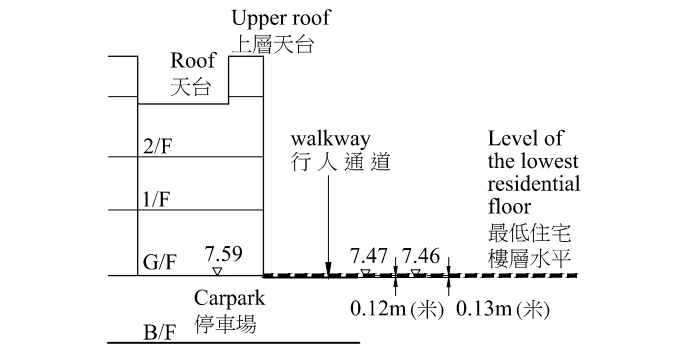
Cross-Section Plan C15  
橫截面圖 C15

----- Dotted line denotes the lowest residential floor.  
虛線為最低住宅樓層水平。

The part of Cervia Boulevard adjacent to the building is 7.43 to 7.49 metres above the Hong Kong Principal Datum.  
毗連建築物的一段卓維雅大道為香港主水平基準以上 7.43 至 7.49 米。

The part of Pink Hatched Black Area adjacent to the building is 6.15 metres above the Hong Kong Principal Datum.  
毗連建築物的一段粉紅色間黑斜線區域為香港主水平基準以上 6.15 米。

House 15,  
Cervia Boulevard  
卓維雅大道15號洋房



Cross-Section Plan C15a  
橫截面圖 C15a

----- Dotted line denotes the lowest residential floor.  
虛線為最低住宅樓層水平。

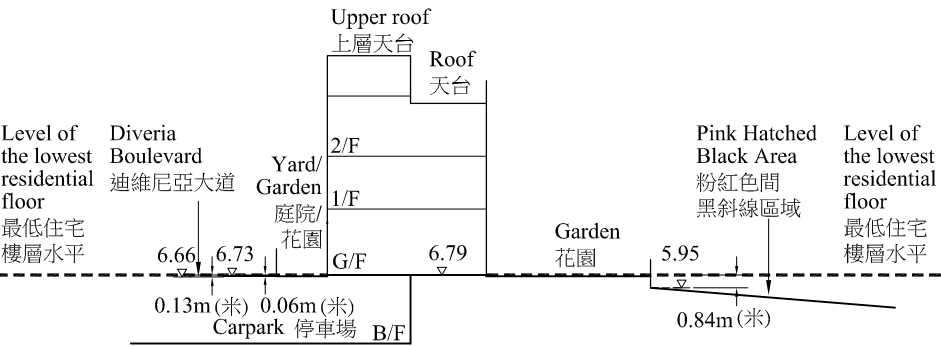
The part of walkway adjacent to the building is 7.46 to 7.47 metres above the Hong Kong Principal Datum.  
毗連建築物的一段行人通道為香港主水平基準以上 7.46 至 7.47 米。



# Cross-section plan of building in the Development 發展項目中的建築物的橫截面圖

## House 1, Diveria Boulevard

迪維尼亞大道1號洋房



Cross-Section Plan D1  
橫截面圖 D1

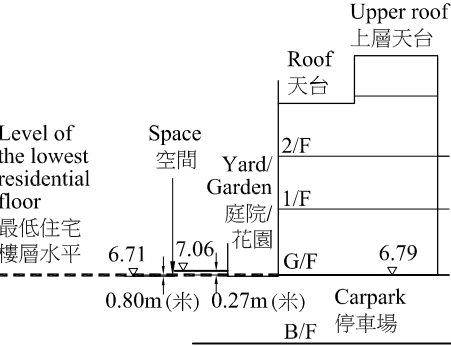
----- Dotted line denotes the lowest residential floor.  
虛線為最低住宅樓層水平。

The part of Diveria Boulevard adjacent to the building is 6.66 to 6.73 metres above the Hong Kong Principal Datum.  
毗連建築物的一段迪維尼亞大道為香港主水平基準以上 6.66 至 6.73 米。

The part of Pink Hatched Black Area adjacent to the building is 5.95 metres above the Hong Kong Principal Datum.  
毗連建築物的一段粉紅色間黑斜線區域為香港主水平基準以上 5.95 米。

## House 1, Diveria Boulevard

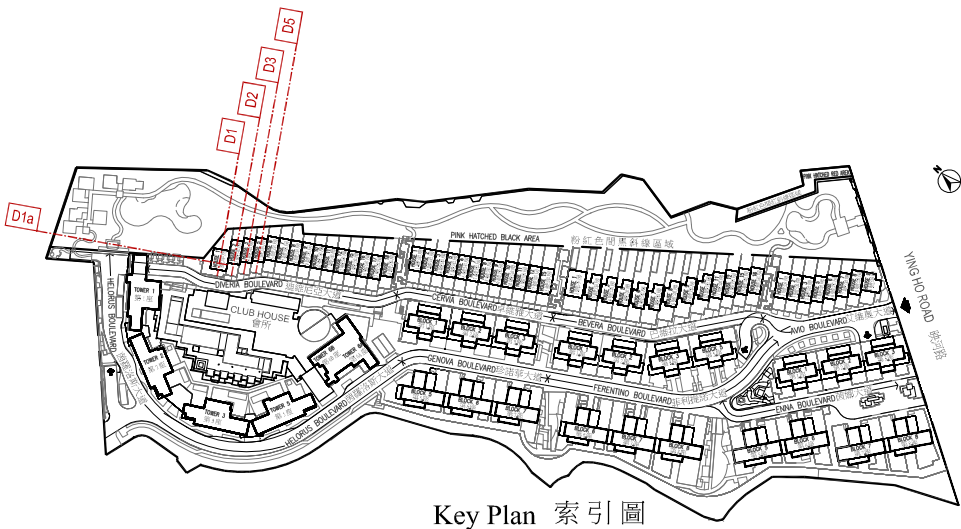
迪維尼亞大道1號洋房



Cross-Section Plan D1a  
橫截面圖 D1a

----- Dotted line denotes the lowest residential floor.  
虛線為最低住宅樓層水平。

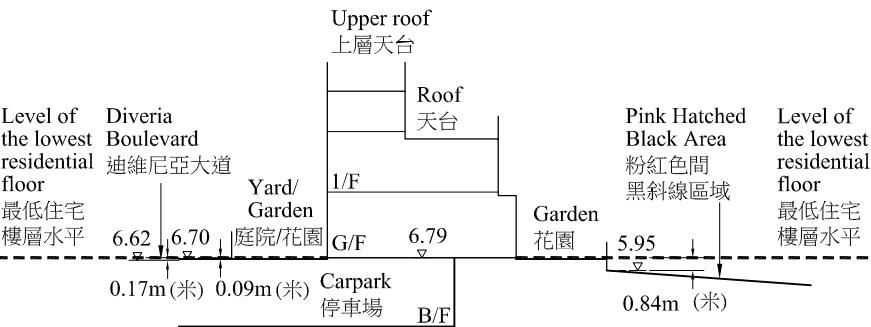
The part of Space adjacent to the building is 6.71 to 7.06 metres above the Hong Kong Principal Datum.  
毗連建築物的一段空間為香港主水平基準以上 6.71 至 7.06 米。



Key Plan 索引圖

## House 2 , Diveria Boulevard

迪維尼亞大道 2號洋房



Cross-Section Plan D2  
橫截面圖 D2

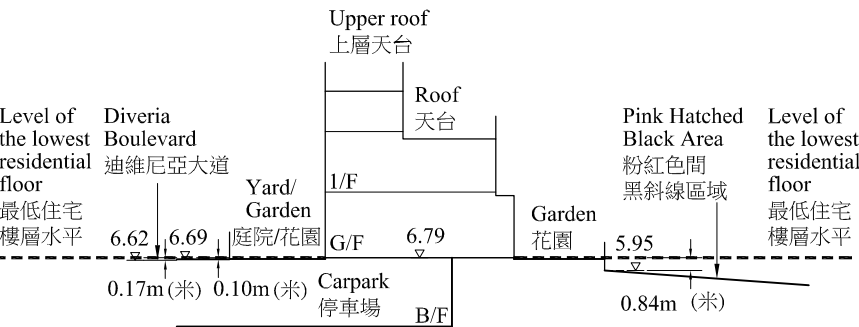
----- Dotted line denotes the lowest residential floor.  
虛線為最低住宅樓層水平。

The part of Diveria Boulevard adjacent to the building is 6.62 to 6.70 metres above the Hong Kong Principal Datum.  
毗連建築物的一段迪維尼亞大道為香港主水平基準以上 6.62 至 6.70 米。

The part of Pink Hatched Black Area adjacent to the building is 5.95 metres above the Hong Kong Principal Datum.  
毗連建築物的一段粉紅色間黑斜線區域為香港主水平基準以上 5.95 米。

## House 3, Diveria Boulevard

迪維尼亞大道 3號洋房



Cross-Section Plan D3  
橫截面圖 D3

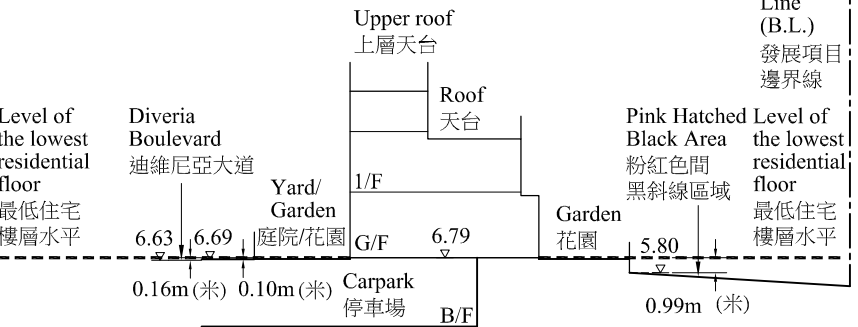
----- Dotted line denotes the lowest residential floor.  
虛線為最低住宅樓層水平。

The part of Diveria Boulevard adjacent to the building is 6.62 to 6.69 metres above the Hong Kong Principal Datum.  
毗連建築物的一段迪維尼亞大道為香港主水平基準以上 6.62 至 6.69 米。

The part of Pink Hatched Black Area adjacent to the building is 5.95 metres above the Hong Kong Principal Datum.  
毗連建築物的一段粉紅色間黑斜線區域為香港主水平基準以上 5.95 米。

## House 5 , Diveria Boulevard

迪維尼亞大道 5號洋房



Cross-Section Plan D5  
橫截面圖 D5

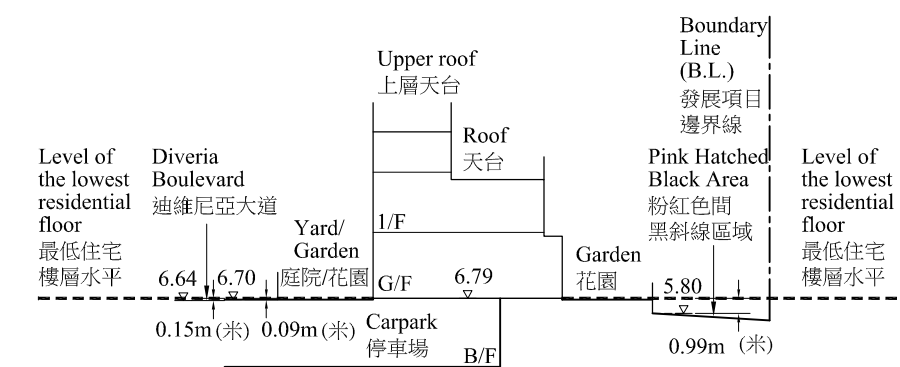
----- Dotted line denotes the lowest residential floor.  
虛線為最低住宅樓層水平。

The part of Diveria Boulevard adjacent to the building is 6.63 to 6.69 metres above the Hong Kong Principal Datum.  
毗連建築物的一段迪維尼亞大道為香港主水平基準以上 6.63 至 6.69 米。

The part of Pink Hatched Black Area adjacent to the building is 5.80 metres above the Hong Kong Principal Datum.  
毗連建築物的一段粉紅色間黑斜線區域為香港主水平基準以上 5.80 米。

Cross-section plan of building in the Development 發展項目中的建築物的橫截面圖

House 6 ,  
Diveria Boulevard  
迪維尼亞大道 6 號洋房



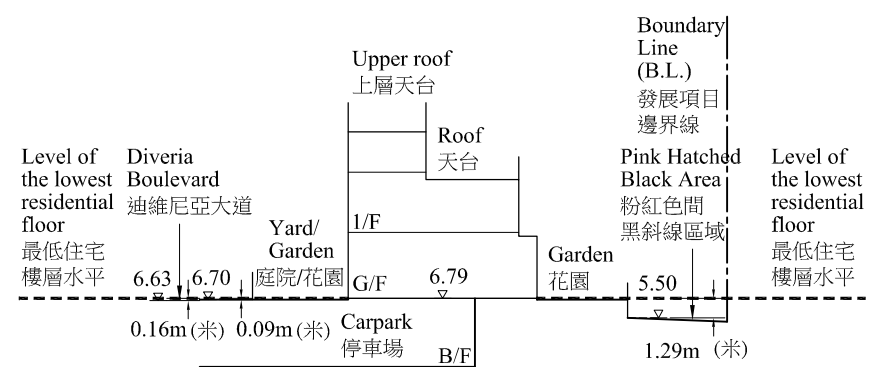
Cross-Section Plan D6  
橫截面圖 D6

----- Dotted line denotes the lowest residential floor.  
虛線為最低住宅樓層水平。

The part of Diveria Boulevard adjacent to the building is 6.64 to 6.70 metres above the Hong Kong Principal Datum.  
毗連建築物的一段迪維尼亞大道為香港主水平基準以上 6.64 至 6.70 米。

The part of Pink Hatched Black Area adjacent to the building is 5.80 metres above the Hong Kong Principal Datum.  
毗連建築物的一段粉紅色間黑斜線區域為香港主水平基準以上 5.80 米。

House 7 ,  
Diveria Boulevard  
迪維尼亞大道 7 號洋房

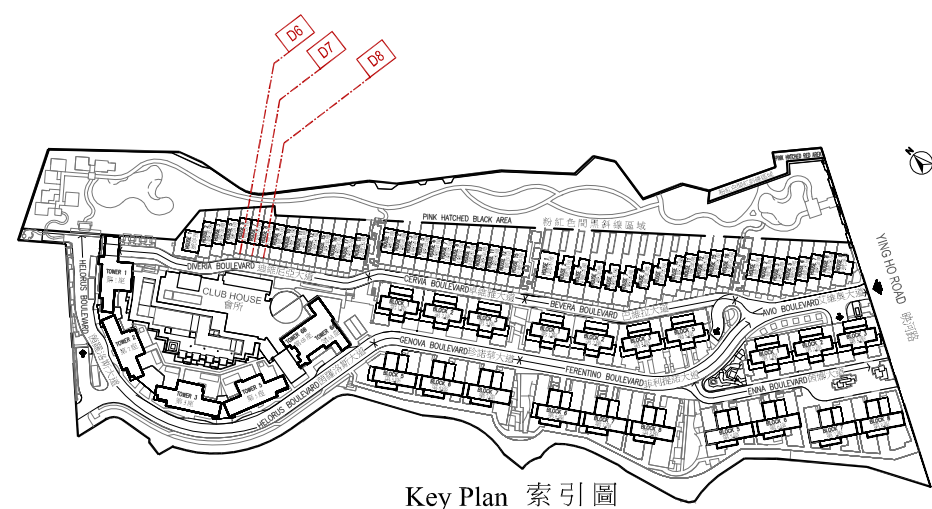


Cross-Section Plan D7  
橫截面圖 D7

----- Dotted line denotes the lowest residential floor.  
虛線為最低住宅樓層水平。

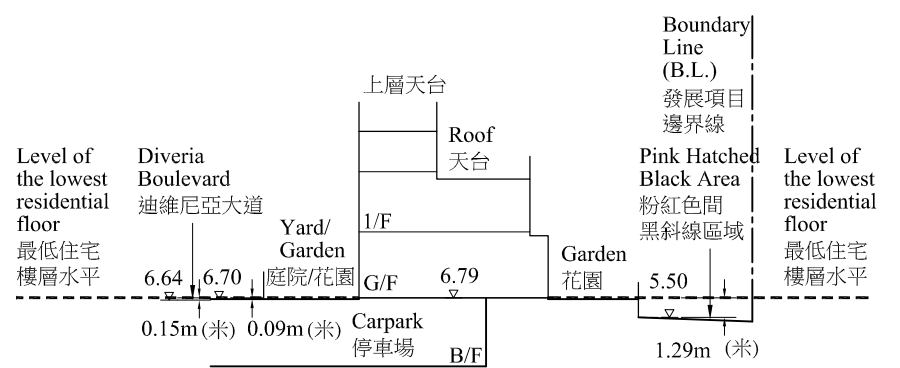
The part of Diveria Boulevard adjacent to the building is 6.63 to 6.70 metres above the Hong Kong Principal Datum.  
毗連建築物的一段迪維尼亞大道為香港主水平基準以上 6.63 至 6.70 米。

The part of Pink Hatched Black Area adjacent to the building is 5.50 metres above the Hong Kong Principal Datum.  
毗連建築物的一段行人通道為香港主水平基準以上 5.50 米。



Key Plan 索引圖

House 8,  
Diveria Boulevard  
迪維尼亞大道 8 號洋房



Cross-Section Plan D8  
橫截面圖 D8

----- Dotted line denotes the lowest residential floor.  
虛線為最低住宅樓層水平。

The part of Diveria Boulevard adjacent to the building is 6.64 to 6.70 metres above the Hong Kong Principal Datum.  
毗連建築物的一段迪維尼亞大道為香港主水平基準以上 6.64 至 6.70 米。

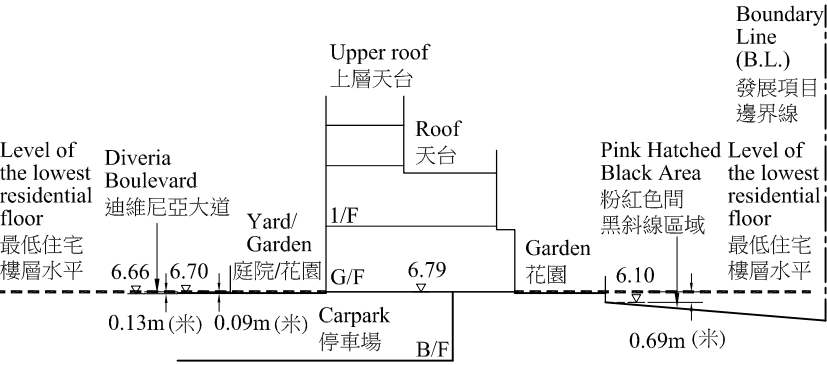
The part of Pink Hatched Black Area adjacent to the building is 5.50 metres above the Hong Kong Principal Datum.  
毗連建築物的一段粉紅色間黑斜線區域為香港主水平基準以上 5.50 米。



# Cross-section plan of building in the Development 發展項目中的建築物的橫截面圖

## House 9, Diveria Boulevard

迪維尼亞大道9號洋房



Cross-Section Plan D9  
橫截面圖 D9

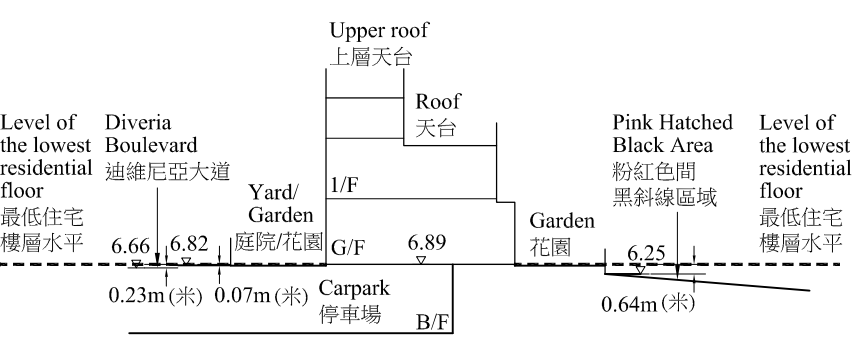
----- Dotted line denotes the lowest residential floor.  
虛線為最低住宅樓層水平。

The part of Diveria Boulevard adjacent to the building is 6.66 to 6.70 metres above the Hong Kong Principal Datum.  
毗連建築物的一段迪維尼亞大道為香港主水平基準以上 6.66 至 6.70 米。

The part of Pink Hatched Black Area adjacent to the building is 6.10 metres above the Hong Kong Principal Datum.  
毗連建築物的一段粉紅色間黑斜線區域為香港主水平基準以上 6.10 米。

## House 11, Diveria Boulevard

迪維尼亞大道11號洋房



Cross-Section Plan D11  
橫截面圖 D11

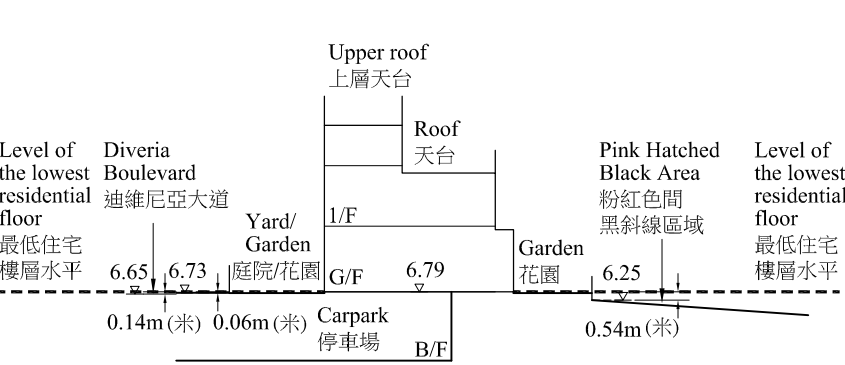
----- Dotted line denotes the lowest residential floor.  
虛線為最低住宅樓層水平。

The part of Diveria Boulevard adjacent to the building is 6.66 to 6.82 metres above the Hong Kong Principal Datum.  
毗連建築物的一段迪維尼亞大道為香港主水平基準以上 6.66 至 6.82 米。

The part of Pink Hatched Black Area adjacent to the building is 6.25 metres above the Hong Kong Principal Datum.  
毗連建築物的一段粉紅色間黑斜線區域為香港主水平基準以上 6.25 米。

## House 10, Diveria Boulevard

迪維尼亞大道10號洋房



Cross-Section Plan D10  
橫截面圖 D10

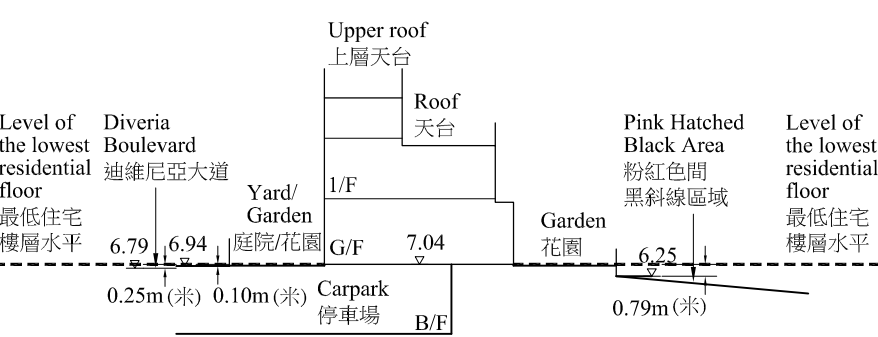
----- Dotted line denotes the lowest residential floor.  
虛線為最低住宅樓層水平。

The part of Diveria Boulevard adjacent to the building is 6.65 to 6.73 metres above the Hong Kong Principal Datum.  
毗連建築物的一段迪維尼亞大道為香港主水平基準以上 6.65 至 6.73 米。

The part of Pink Hatched Black Area adjacent to the building is 6.25 metres above the Hong Kong Principal Datum.  
毗連建築物的一段粉紅色間黑斜線區域為香港主水平基準以上 6.25 米。

## House 12, Diveria Boulevard

迪維尼亞大道12號洋房

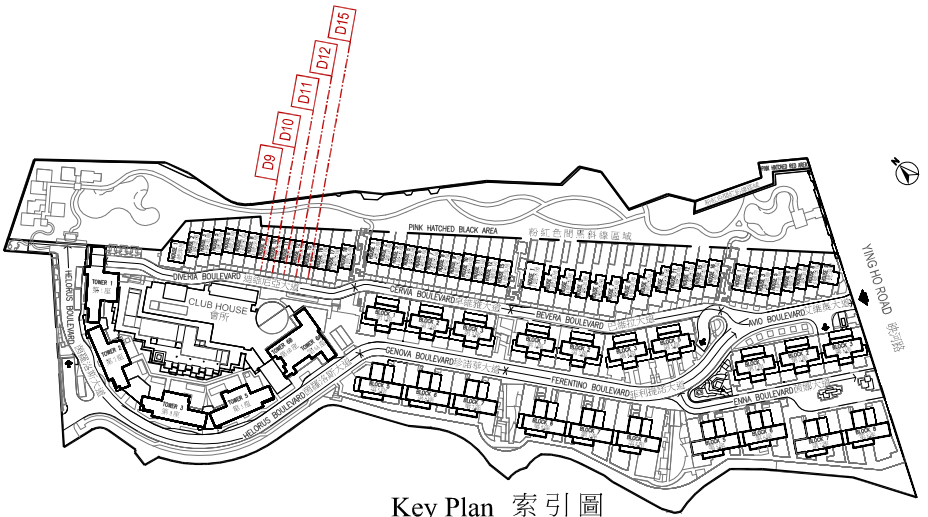


Cross-Section Plan D12  
橫截面圖 D12

----- Dotted line denotes the lowest residential floor.  
虛線為最低住宅樓層水平。

The part of Diveria Boulevard adjacent to the building is 6.79 to 6.94 metres above the Hong Kong Principal Datum.  
毗連建築物的一段迪維尼亞大道為香港主水平基準以上 6.79 至 6.94 米。

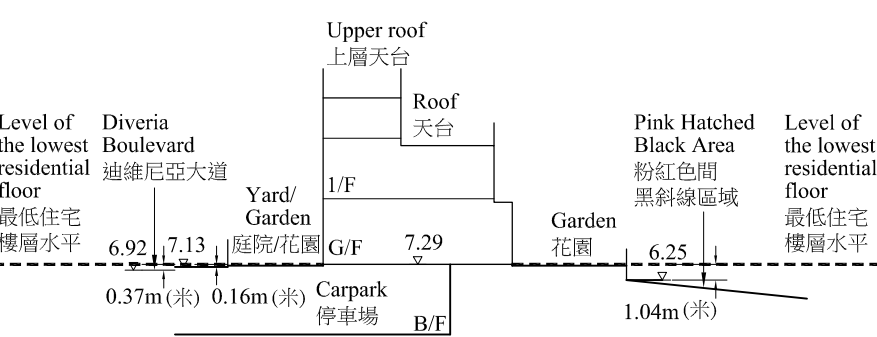
The part of Pink Hatched Black Area adjacent to the building is 6.25 metres above the Hong Kong Principal Datum.  
毗連建築物的一段粉紅色間黑斜線區域為香港主水平基準以上 6.25 米。



Key Plan 索引圖

## House 15, Diveria Boulevard

迪維尼亞大道15號洋房



Cross-Section Plan D15  
橫截面圖 D15

----- Dotted line denotes the lowest residential floor.  
虛線為最低住宅樓層水平。

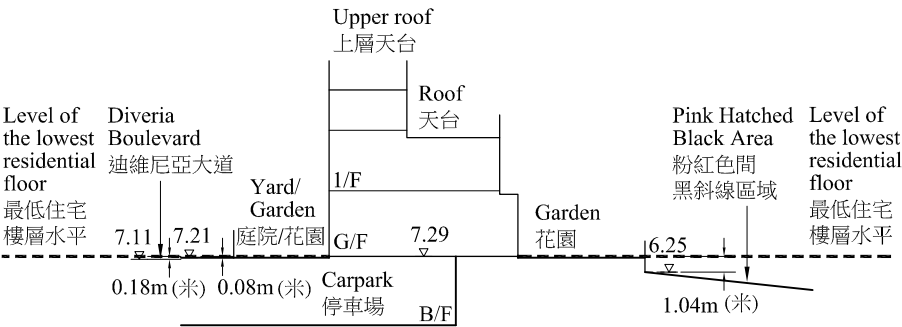
The part of Diveria Boulevard adjacent to the building is 6.92 to 7.13 metres above the Hong Kong Principal Datum.  
毗連建築物的一段迪維尼亞大道為香港主水平基準以上 6.92 至 7.13 米。

The part of Pink Hatched Black Area adjacent to the building is 6.25 metres above the Hong Kong Principal Datum.  
毗連建築物的一段粉紅色間黑斜線區域為香港主水平基準以上 6.25 米。

# Cross-section plan of building in the Development 發展項目中的建築物的橫截面圖

## House 16, Diveria Boulevard

迪維尼亞大道16號洋房

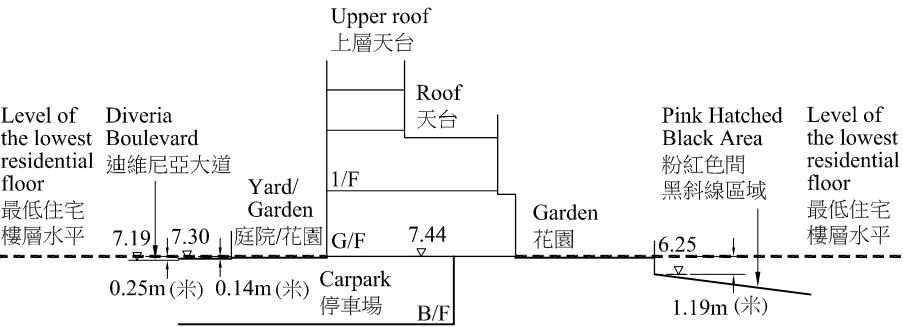


Cross-Section Plan D16  
橫截面圖 D16

- Dotted line denotes the lowest residential floor.  
虛線為最低住宅樓層水平。
- The part of Diveria Boulevard adjacent to the building is 7.11 to 7.21 metres above the Hong Kong Principal Datum.  
毗連建築物的一段迪維尼亞大道為香港主水平基準以上 7.11 至 7.21 米。
- The part of Pink Hatched Black Area adjacent to the building is 6.25 metres above the Hong Kong Principal Datum.  
毗連建築物的一段粉紅色間黑斜線區域為香港主水平基準以上 6.25 米。

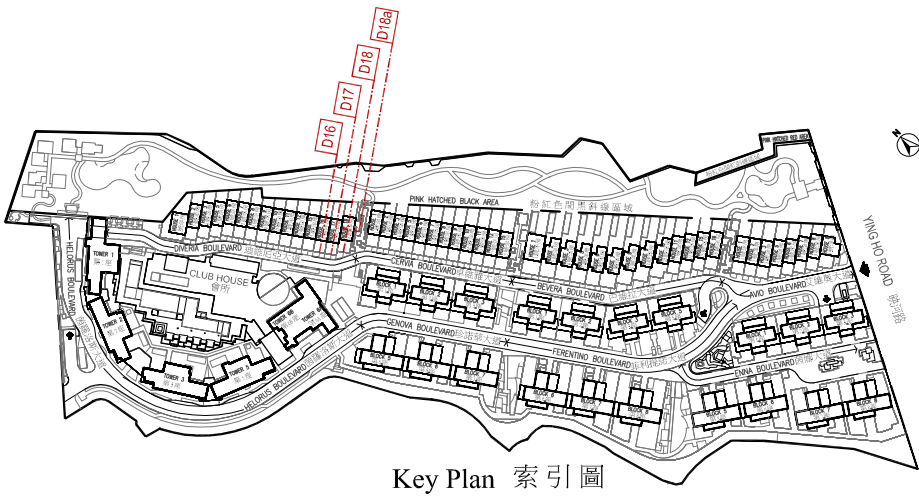
## House 17, Diveria Boulevard

迪維尼亞大道17號洋房



Cross-Section Plan D17  
橫截面圖 D17

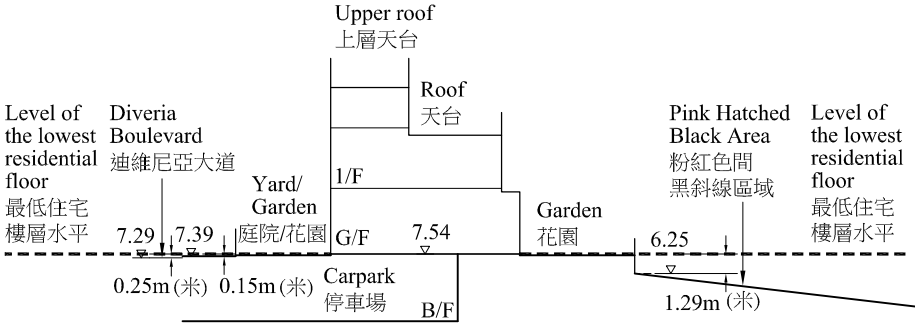
- Dotted line denotes the lowest residential floor.  
虛線為最低住宅樓層水平。
- The part of Diveria Boulevard adjacent to the building is 7.19 to 7.30 metres above the Hong Kong Principal Datum.  
毗連建築物的一段迪維尼亞大道為香港主水平基準以上 7.19 至 7.30 米。
- The part of Pink Hatched Black Area adjacent to the building is 6.25 metres above the Hong Kong Principal Datum.  
毗連建築物的一段粉紅色間黑斜線區域為香港主水平基準以上 6.25 米。



Key Plan 索引圖

## House 18, Diveria Boulevard

迪維尼亞大道18號洋房

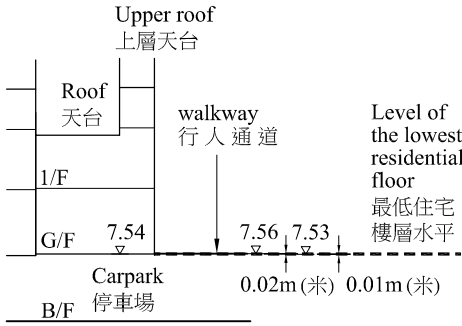


Cross-Section Plan D18  
橫截面圖 D18

- Dotted line denotes the lowest residential floor.  
虛線為最低住宅樓層水平。
- The part of Diveria Boulevard adjacent to the building is 7.29 to 7.39 metres above the Hong Kong Principal Datum.  
毗連建築物的一段迪維尼亞大道為香港主水平基準以上 7.29 至 7.39 米。
- The part of Pink Hatched Black Area adjacent to the building is 6.25 metres above the Hong Kong Principal Datum.  
毗連建築物的一段粉紅色間黑斜線區域為香港主水平基準以上 6.25 米。

## House 18, Diveria Boulevard

迪維尼亞大道18號洋房



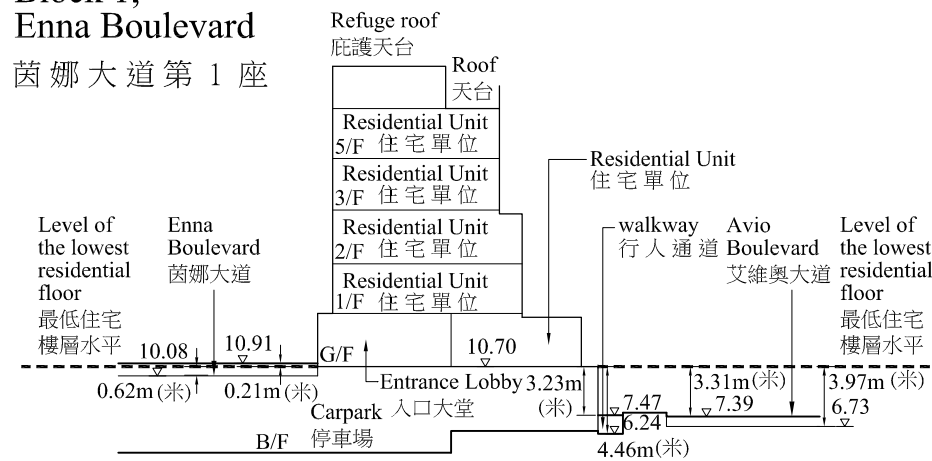
Cross-Section Plan D18a  
橫截面圖 D18a

- Dotted line denotes the lowest residential floor.  
虛線為最低住宅樓層水平。
- The part of walkway adjacent to the building is 7.53 to 7.56 metres above the Hong Kong Principal Datum.  
毗連建築物的一段行人通道為香港主水平基準以上 7.53 至 7.56 米。



# Cross-section plan of building in the Development 發展項目中的建築物的橫截面圖

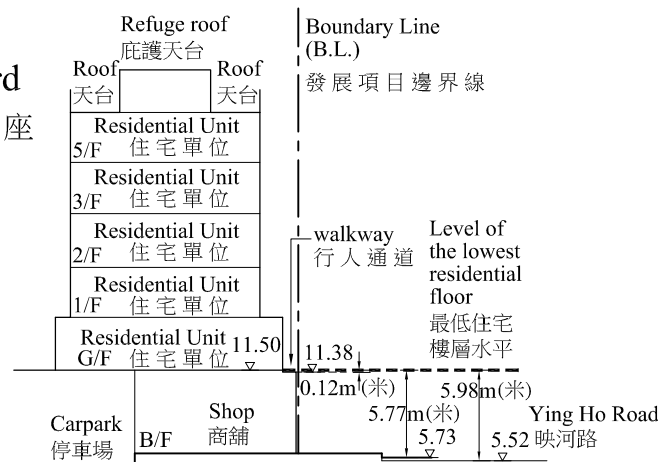
## Block 1, Enna Boulevard 茵娜大道第 1 座



Cross-Section Plan E1  
橫截面圖 E1

- Dotted line denotes the lowest residential floor.  
虛線為最低住宅樓層水平。
- The part of Enna Boulevard adjacent to the building is 10.08 to 10.91 metres above the Hong Kong Principal Datum.  
毗連建築物的一段茵娜大道為香港主水平基準以上 10.08 至 10.91 米。
- The part of Avio Boulevard adjacent to the building is 6.73 to 7.39 metres above the Hong Kong Principal Datum.  
毗連建築物的一段艾維奧大道為香港主水平基準以上 6.73 至 7.39 米。
- The part of walkway adjacent to the building is 6.24 to 7.47 metres above the Hong Kong Principal Datum.  
毗連建築物的一段行人通道為香港主水平基準以上 6.24 至 7.47 米。

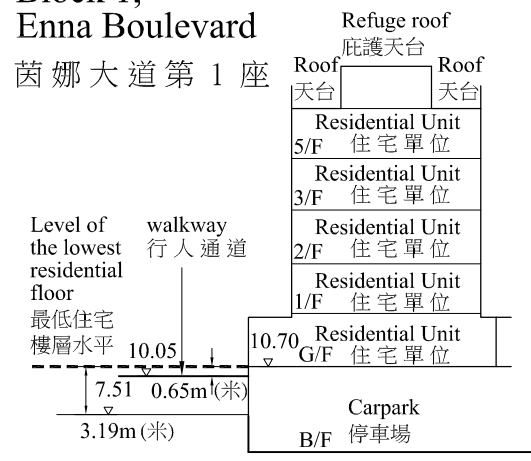
## Block 3, Enna Boulevard 茵娜大道第 3 座



Cross-Section Plan E3a  
橫截面圖 E3a

- Dotted line denotes the lowest residential floor.  
虛線為最低住宅樓層水平。
- The part of Ying Ho Road adjacent to the building is 5.77 to 5.98 metres above the Hong Kong Principal Datum.  
毗連建築物的一段映河路為香港主水平基準以上 5.77 至 5.98 米。
- The part of walkway adjacent to the building is 11.38 metres above the Hong Kong Principal Datum.  
毗連建築物的一段行人通道為香港主水平基準以上 11.38 米。

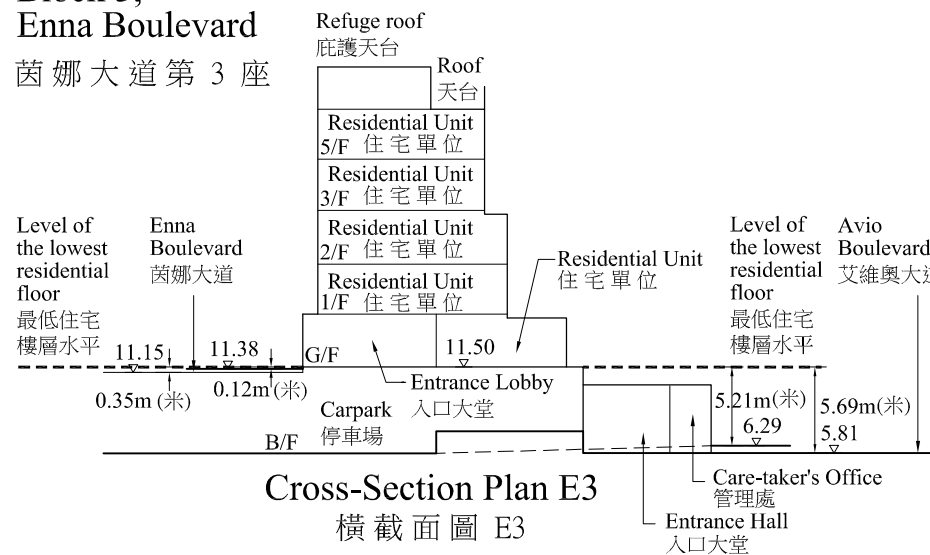
## Block 1, Enna Boulevard 茵娜大道第 1 座



Cross-Section Plan E1a  
橫截面圖 E1a

- Dotted line denotes the lowest residential floor.  
虛線為最低住宅樓層水平。
- The part of walkway adjacent to the building is 7.51 to 10.05 metres above the Hong Kong Principal Datum.  
毗連建築物的一段行人通道為香港主水平基準以上 7.51 至 10.05 米。

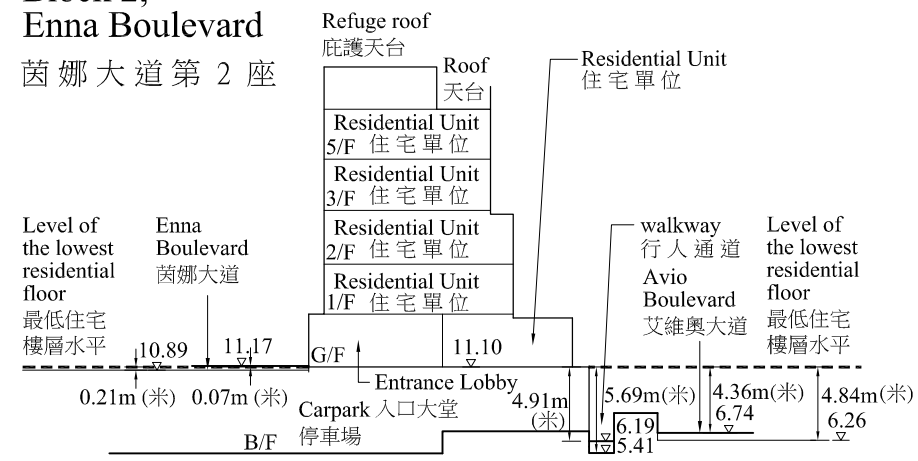
## Block 3, Enna Boulevard 茵娜大道第 3 座



Cross-Section Plan E3  
橫截面圖 E3

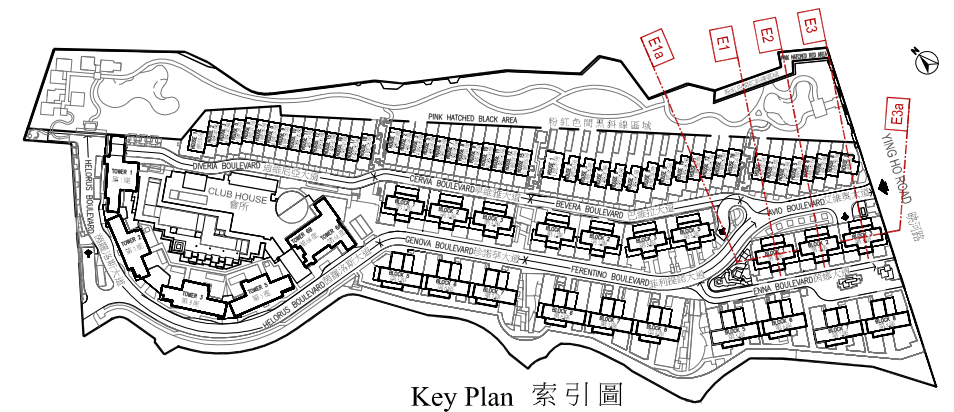
- Dotted line denotes the lowest residential floor.  
虛線為最低住宅樓層水平。
- The part of Enna Boulevard adjacent to the building is 11.15 to 11.38 metres above the Hong Kong Principal Datum.  
毗連建築物的一段茵娜大道為香港主水平基準以上 11.15 至 11.38 米。
- The part of Avio Boulevard adjacent to the building is 5.81 to 6.29 metres above the Hong Kong Principal Datum.  
毗連建築物的一段艾維奧大道為香港主水平基準以上 5.81 至 6.29 米。

## Block 2, Enna Boulevard 茵娜大道第 2 座



Cross-Section Plan E2  
橫截面圖 E2

- Dotted line denotes the lowest residential floor.  
虛線為最低住宅樓層水平。
- The part of Enna Boulevard adjacent to the building is 10.89 to 11.17 metres above the Hong Kong Principal Datum.  
毗連建築物的一段茵娜大道為香港主水平基準以上 10.89 至 11.17 米。
- The part of Avio Boulevard adjacent to the building is 6.26 to 6.74 metres above the Hong Kong Principal Datum.  
毗連建築物的一段艾維奧大道為香港主水平基準以上 6.26 至 6.74 米。
- The part of walkway adjacent to the building is 5.41 to 6.19 metres above the Hong Kong Principal Datum.  
毗連建築物的一段行人通道為香港主水平基準以上 5.41 至 6.19 米。

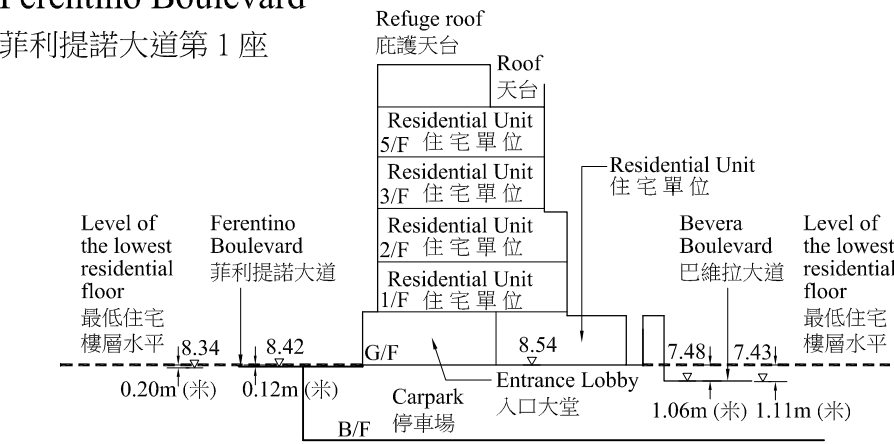


Key Plan 索引圖



Cross-section plan of building in the Development 發展項目中的建築物的橫截面圖

Block 1,  
Ferentino Boulevard  
菲利提諾大道第 1 座



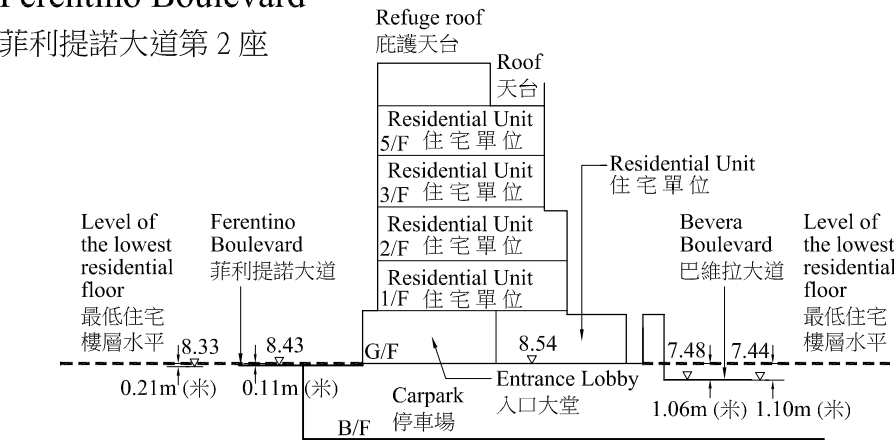
Cross-Section Plan F1  
橫截面圖 F1

----- Dotted line denotes the lowest residential floor.  
虛線為最低住宅樓層水平。

The part of Ferentino Boulevard adjacent to the building is 8.34 to 8.42 metres above the Hong Kong Principal Datum.  
毗連建築物的一段菲利提諾大道為香港主水平基準以上 8.34 至 8.42 米。

The part of Bevera Boulevard adjacent to the building is 7.43 to 7.48 metres above the Hong Kong Principal Datum.  
毗連建築物的一段巴維拉大道為香港主水平基準以上 7.43 至 7.48 米。

Block 2,  
Ferentino Boulevard  
菲利提諾大道第 2 座



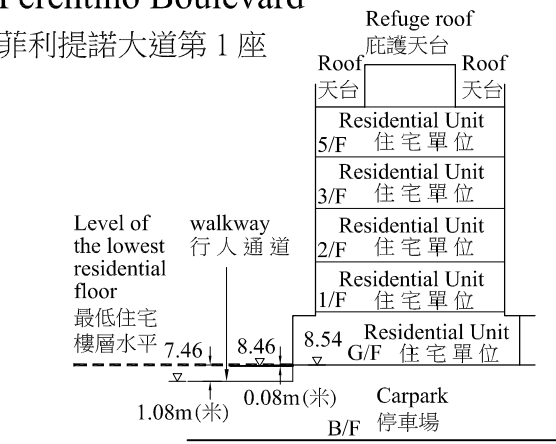
Cross-Section Plan F2  
橫截面圖 F2

----- Dotted line denotes the lowest residential floor.  
虛線為最低住宅樓層水平。

The part of Ferentino Boulevard adjacent to the building is 8.33 to 8.43 metres above the Hong Kong Principal Datum.  
毗連建築物的一段菲利提諾大道為香港主水平基準以上 8.33 至 8.43 米。

The part of Bevera Boulevard adjacent to the building is 7.44 to 7.48 metres above the Hong Kong Principal Datum.  
毗連建築物的一段巴維拉大道為香港主水平基準以上 7.44 至 7.48 米。

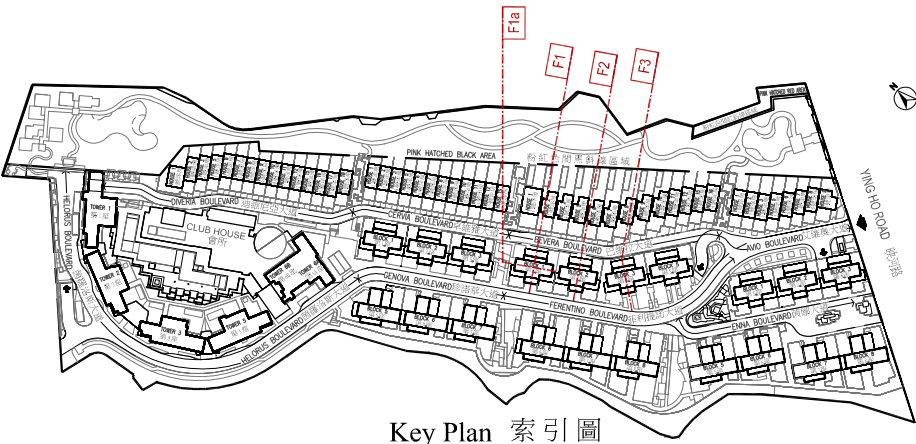
Block 1,  
Ferentino Boulevard  
菲利提諾大道第 1 座



Cross-Section Plan F1a  
橫截面圖 F1a

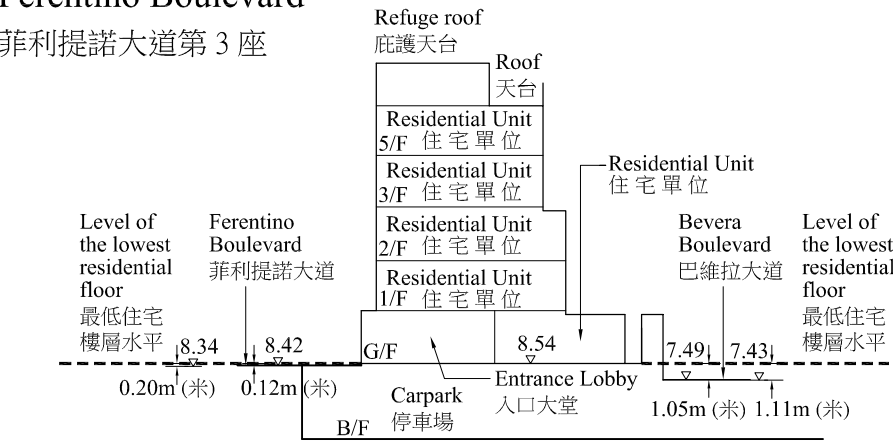
----- Dotted line denotes the lowest residential floor.  
虛線為最低住宅樓層水平。

The part of walkway adjacent to the building is 7.46 to 8.46 metres above the Hong Kong Principal Datum.  
毗連建築物的一段行人通道為香港主水平基準以上 7.46 至 8.46 米。



Key Plan 索引圖

Block 3,  
Ferentino Boulevard  
菲利提諾大道第 3 座



Cross-Section Plan F3  
橫截面圖 F3

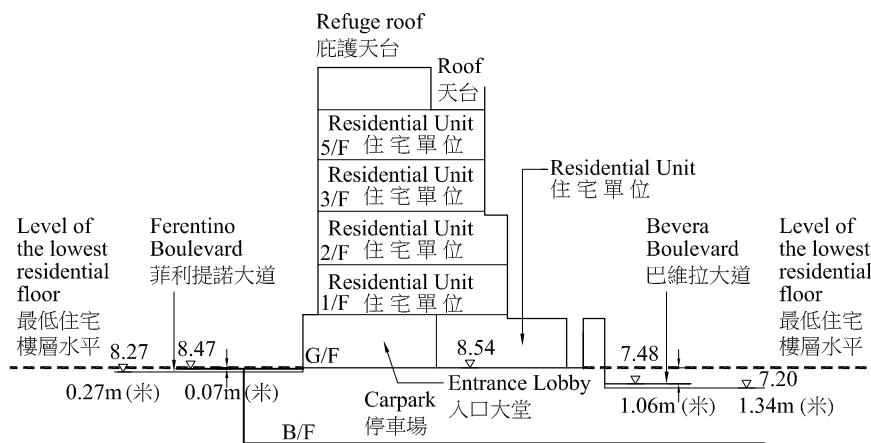
----- Dotted line denotes the lowest residential floor.  
虛線為最低住宅樓層水平。

The part of Ferentino Boulevard adjacent to the building is 8.34 to 8.42 metres above the Hong Kong Principal Datum.  
毗連建築物的一段菲利提諾大道為香港主水平基準以上 8.34 至 8.42 米。

The part of Bevera Boulevard adjacent to the building is 7.43 to 7.49 metres above the Hong Kong Principal Datum.  
毗連建築物的一段巴維拉大道為香港主水平基準以上 7.43 至 7.49 米。

# Cross-section plan of building in the Development 發展項目中的建築物的橫截面圖

Block 5,  
Ferentino Boulevard  
菲利提諾大道第 5 座



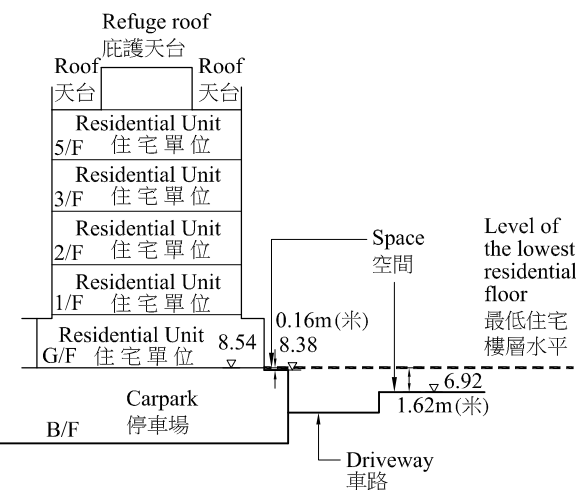
Cross-Section Plan F5  
橫截面圖 F5

----- Dotted line denotes the lowest residential floor.  
虛線為最低住宅樓層水平。

The part of Ferentino Boulevard adjacent to the building is 8.27 to 8.47 metres above the Hong Kong Principal Datum.  
毗連建築物的一段菲利提諾大道為香港主水平基準以上 8.27 至 8.47 米。

The part of Bevera Boulevard adjacent to the building is 7.20 to 7.48 metres above the Hong Kong Principal Datum.  
毗連建築物的一段巴維拉大道為香港主水平基準以上 7.20 至 7.48 米。

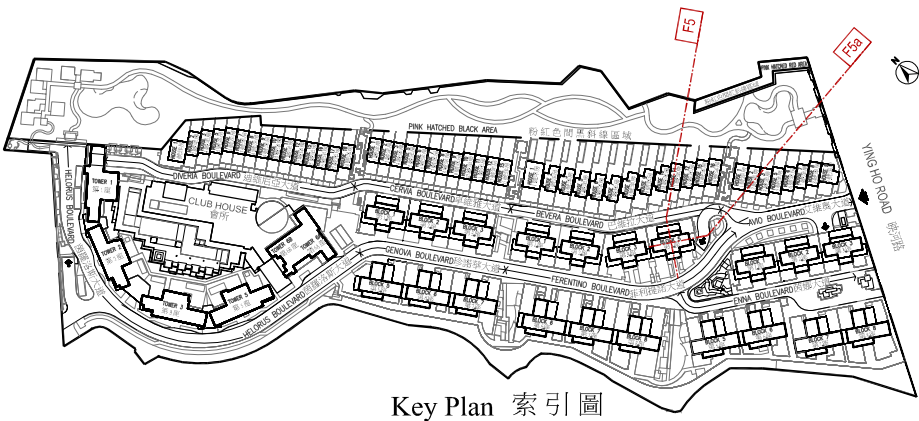
Block 5,  
Ferentino Boulevard  
菲利提諾大道第 5 座



Cross-Section Plan F5a  
橫截面圖 F5a

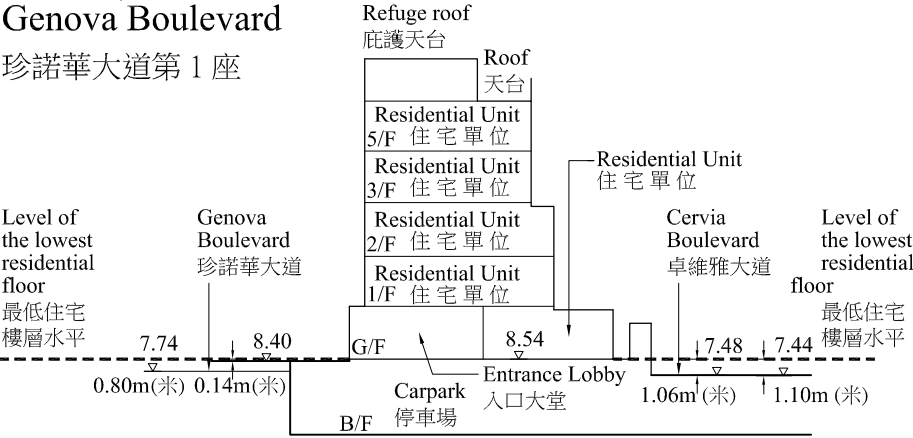
----- Dotted line denotes the lowest residential floor.  
虛線為最低住宅樓層水平。

The part of Space adjacent to the building is 6.92 to 8.38 metres above the Hong Kong Principal Datum.  
毗連建築物的一段空間為香港主水平基準以上 6.92 至 8.38 米。



Cross-section plan of building in the Development 發展項目中的建築物的橫截面圖

Block 1,  
Genova Boulevard  
珍諾華大道第 1 座



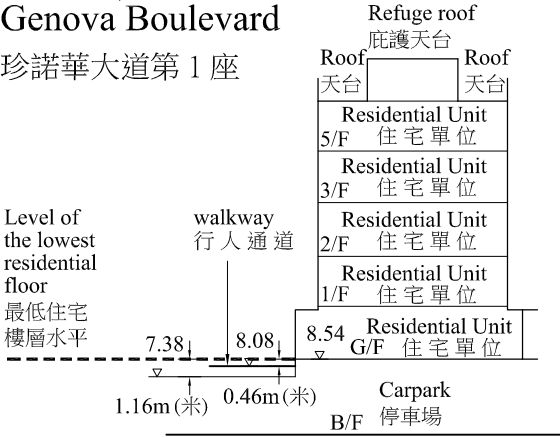
Cross-Section Plan G1  
橫截面圖 G1

----- Dotted line denotes the lowest residential floor.  
虛線為最低住宅樓層水平。

The part of Genova Boulevard adjacent to the building is 7.74 to 8.40 metres above the Hong Kong Principal Datum.  
毗連建築物的一段珍諾華大道為香港主水平基準以上 7.74 至 8.40 米。

The part of Cervia Boulevard adjacent to the building is 7.44 to 7.48 metres above the Hong Kong Principal Datum.  
毗連建築物的一段卓維雅大道為香港主水平基準以上 7.44 至 7.48 米。

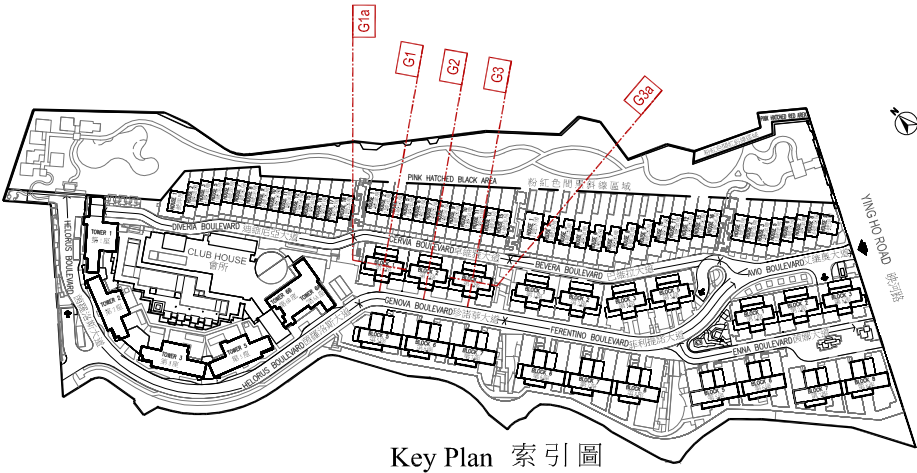
Block 1,  
Genova Boulevard  
珍諾華大道第 1 座



Cross-Section Plan G1a  
橫截面圖 G1a

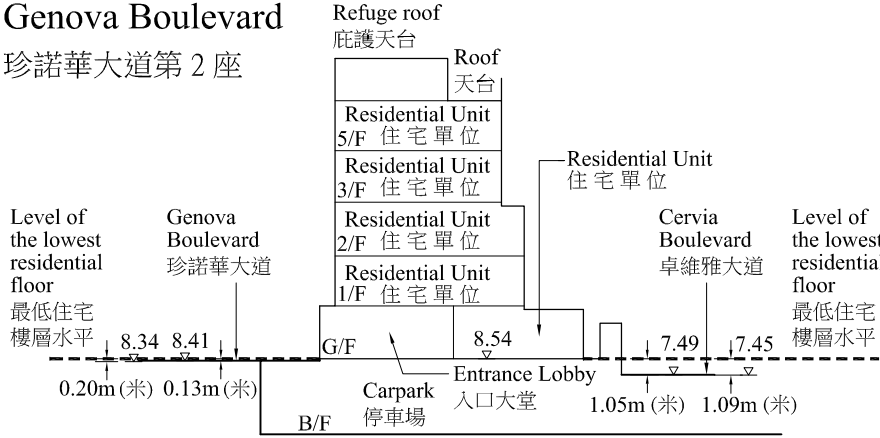
----- Dotted line denotes the lowest residential floor.  
虛線為最低住宅樓層水平。

The part of walkway adjacent to the building is 7.38 to 8.08 metres above the Hong Kong Principal Datum.  
毗連建築物的一段行人通道為香港主水平基準以上 7.38 至 8.08 米。



Key Plan 索引圖

Block 2,  
Genova Boulevard  
珍諾華大道第 2 座



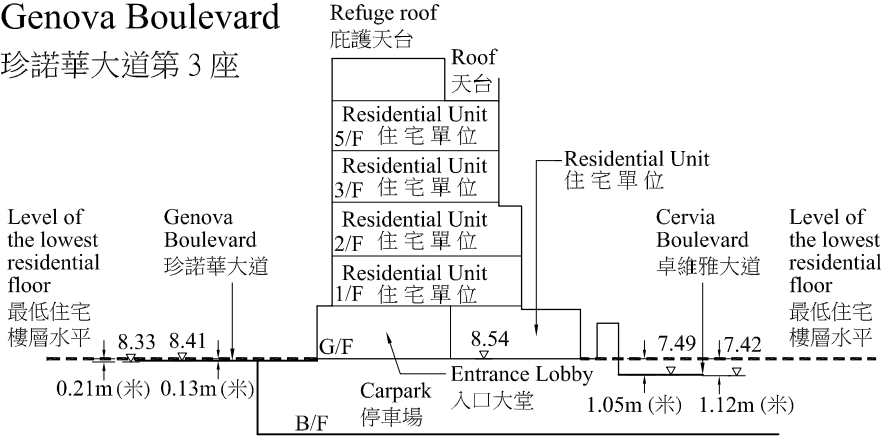
Cross-Section Plan G2  
橫截面圖 G2

----- Dotted line denotes the lowest residential floor.  
虛線為最低住宅樓層水平。

The part of Genova Boulevard adjacent to the building is 8.34 to 8.41 metres above the Hong Kong Principal Datum.  
毗連建築物的一段珍諾華大道為香港主水平基準以上 8.34 至 8.41 米。

The part of Cervia Boulevard adjacent to the building is 7.45 to 7.49 metres above the Hong Kong Principal Datum.  
毗連建築物的一段卓維雅大道為香港主水平基準以上 7.45 至 7.49 米。

Block 3,  
Genova Boulevard  
珍諾華大道第 3 座



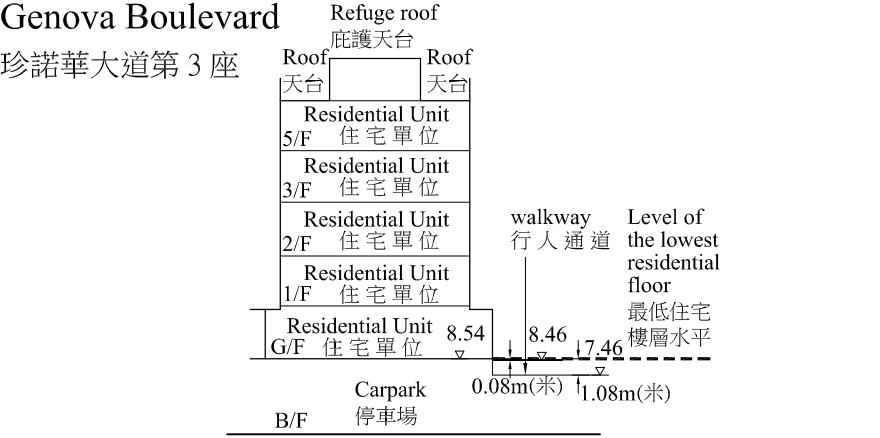
Cross-Section Plan G3  
橫截面圖 G3

----- Dotted line denotes the lowest residential floor.  
虛線為最低住宅樓層水平。

The part of Genova Boulevard adjacent to the building is 8.33 to 8.41 metres above the Hong Kong Principal Datum.  
毗連建築物的一段珍諾華大道為香港主水平基準以上 8.33 至 8.41 米。

The part of Cervia Boulevard adjacent to the building is 7.42 to 7.49 metres above the Hong Kong Principal Datum.  
毗連建築物的一段卓維雅大道為香港主水平基準以上 7.42 至 7.49 米。

Block 3,  
Genova Boulevard  
珍諾華大道第 3 座



Cross-Section Plan G3a  
橫截面圖 G3a

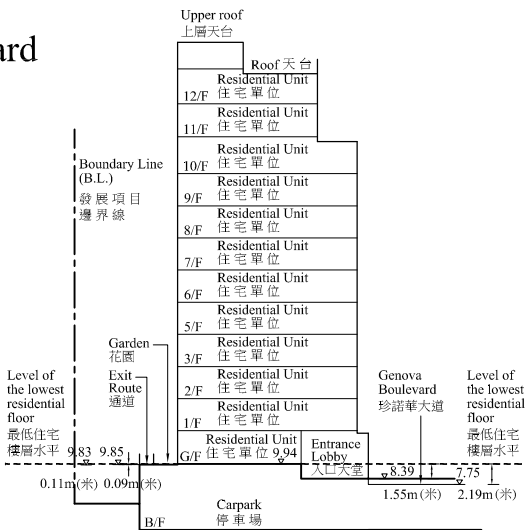
----- Dotted line denotes the lowest residential floor.  
虛線為最低住宅樓層水平。

The part of walkway adjacent to the building is 7.46 to 8.46 metres above the Hong Kong Principal Datum.  
毗連建築物的一段行人通道為香港主水平基準以上 7.46 至 8.46 米。



# Cross-section plan of building in the Development 發展項目中的建築物的橫截面圖

Block 5,  
Genova Boulevard  
珍諾華大道第 5 座



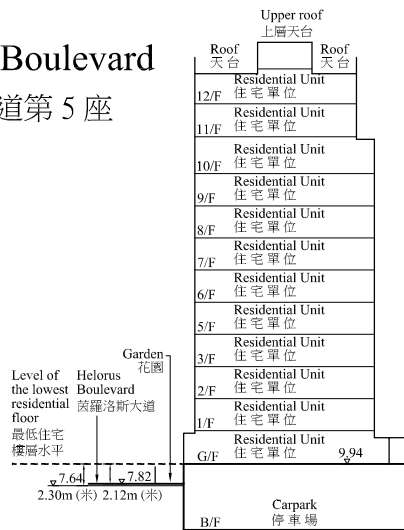
Cross-Section Plan G5  
橫截面圖 G5

----- Dotted line denotes the lowest residential floor.  
虛線為最低住宅樓層水平。

The part of Genova Boulevard adjacent to the building is 7.75 to 8.39 metres above the Hong Kong Principal Datum.  
毗連建築物的一段珍諾華大道為香港主水平基準以上 7.75 至 8.39 米。

The part of Exit Route adjacent to the building is 9.83 to 9.85 metres above the Hong Kong Principal Datum.  
毗連建築物的一段通道為香港主水平基準以上 9.83 至 9.85 米。

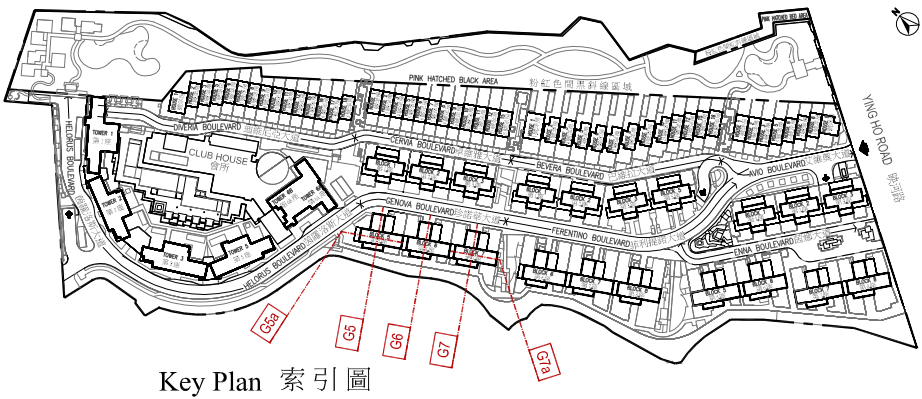
Block 5,  
Genova Boulevard  
珍諾華大道第 5 座



Cross-Section Plan G5a  
橫截面圖 G5a

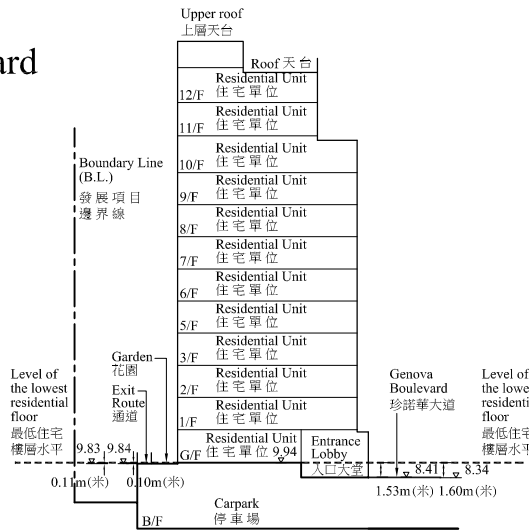
----- Dotted line denotes the lowest residential floor.  
虛線為最低住宅樓層水平。

The part of Helorus Boulevard adjacent to the building is 7.64 to 7.82 metres above the Hong Kong Principal Datum.  
毗連建築物的一段茵羅洛斯大道為香港主水平基準以上 7.64 至 7.82 米。



Key Plan 索引圖

Block 6,  
Genova Boulevard  
珍諾華大道第 6 座



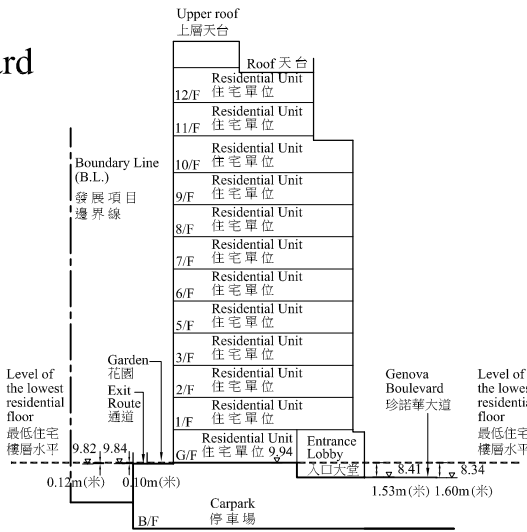
Cross-Section Plan G6  
橫截面圖 G6

----- Dotted line denotes the lowest residential floor.  
虛線為最低住宅樓層水平。

The part of Genova Boulevard adjacent to the building is 8.34 to 8.41 metres above the Hong Kong Principal Datum.  
毗連建築物的一段珍諾華大道為香港主水平基準以上 8.34 至 8.41 米。

The part of Exit Route adjacent to the building is 9.83 to 9.84 metres above the Hong Kong Principal Datum.  
毗連建築物的一段通道為香港主水平基準以上 9.83 至 9.84 米。

Block 7,  
Genova Boulevard  
珍諾華大道第 7 座



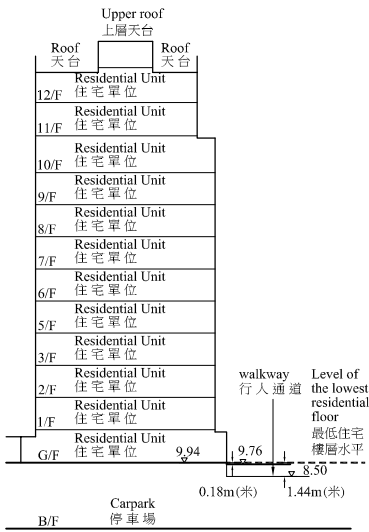
Cross-Section Plan G7  
橫截面圖 G7

----- Dotted line denotes the lowest residential floor.  
虛線為最低住宅樓層水平。

The part of Genova Boulevard adjacent to the building is 8.34 to 8.41 metres above the Hong Kong Principal Datum.  
毗連建築物的一段珍諾華大道為香港主水平基準以上 8.34 至 8.41 米。

The part of Exit Route adjacent to the building is 9.82 to 9.84 metres above the Hong Kong Principal Datum.  
毗連建築物的一段通道為香港主水平基準以上 9.82 至 9.84 米。

Block 7,  
Genova Boulevard  
珍諾華大道第 7 座



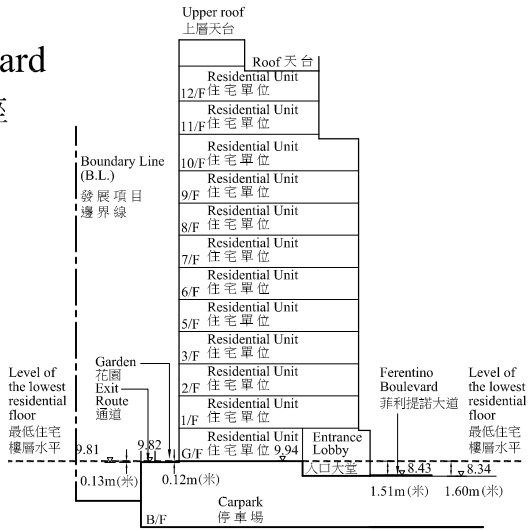
Cross-Section Plan G7a  
橫截面圖 G7a

----- Dotted line denotes the lowest residential floor.  
虛線為最低住宅樓層水平。

The part of walkway adjacent to the building is 8.50 to 9.76 metres above the Hong Kong Principal Datum.  
毗連建築物的一段行人通道為香港主水平基準以上 8.50 至 9.76 米。

Cross-section plan of building in the Development 發展項目中的建築物的橫截面圖

Block 6,  
Ferentino Boulevard  
菲利提諾大道第 6 座



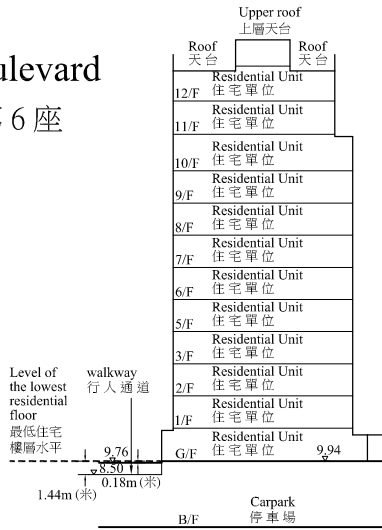
Cross-Section Plan F6  
橫截面圖 F6

----- Dotted line denotes the lowest residential floor.  
虛線為最低住宅樓層水平。

The part of Ferentino Boulevard adjacent to the building is 8.34 to 8.43 metres above the Hong Kong Principal Datum.  
毗連建築物的一段菲利提諾大道為香港主水平基準以上 8.34至 8.43 米。

The part of Exit Route adjacent to the building is 9.81 to 9.82 metres above the Hong Kong Principal Datum.  
毗連建築物的一段通道為香港主水平基準以上 9.81至 9.82 米。

Block 6,  
Ferentino Boulevard  
菲利提諾大道第 6 座



Cross-Section Plan F6a  
橫截面圖 F6a

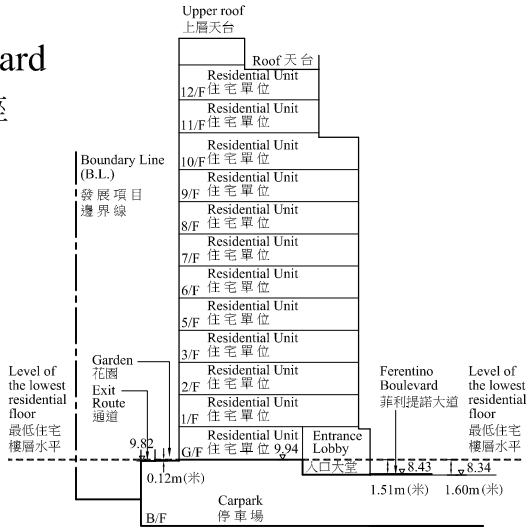
----- Dotted line denotes the lowest residential floor.  
虛線為最低住宅樓層水平。

The part of walkway adjacent to the building is 8.50 to 9.76 metres above the Hong Kong Principal Datum.  
毗連建築物的一段行人通道為香港主水平基準以上 8.50至 9.76 米。



Key Plan 索引圖

Block 7,  
Ferentino Boulevard  
菲利提諾大道第 7 座



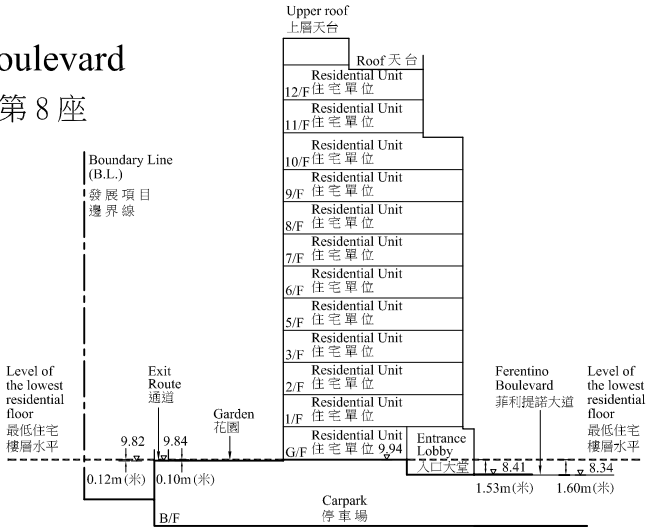
Cross-Section Plan F7  
橫截面圖 F7

----- Dotted line denotes the lowest residential floor.  
虛線為最低住宅樓層水平。

The part of Ferentino Boulevard adjacent to the building is 8.34 to 8.43 metres above the Hong Kong Principal Datum.  
毗連建築物的一段菲利提諾大道為香港主水平基準以上 8.34至 8.43 米。

The part of Exit Route adjacent to the building is 9.82 metres above the Hong Kong Principal Datum.  
毗連建築物的一段通道為香港主水平基準以上 9.82 米。

Block 8,  
Ferentino Boulevard  
菲利提諾大道第 8 座



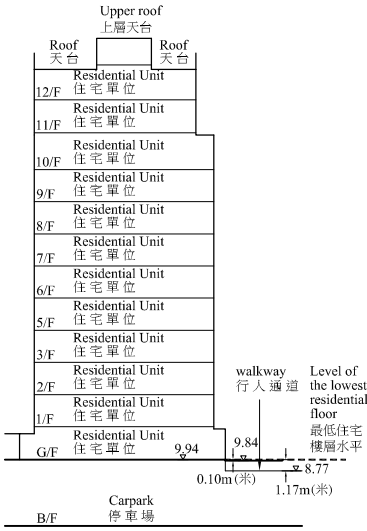
Cross-Section Plan F8  
橫截面圖 F8

----- Dotted line denotes the lowest residential floor.  
虛線為最低住宅樓層水平。

The part of Ferentino Boulevard adjacent to the building is 8.34 to 8.41 metres above the Hong Kong Principal Datum.  
毗連建築物的一段菲利提諾大道為香港主水平基準以上 8.34至 8.41 米。

The part of Exit Route adjacent to the building is 9.82 to 9.84 metres above the Hong Kong Principal Datum.  
毗連建築物的一段通道為香港主水平基準以上 9.82至 9.84 米。

Block 8,  
Ferentino Boulevard  
菲利提諾大道第 8 座



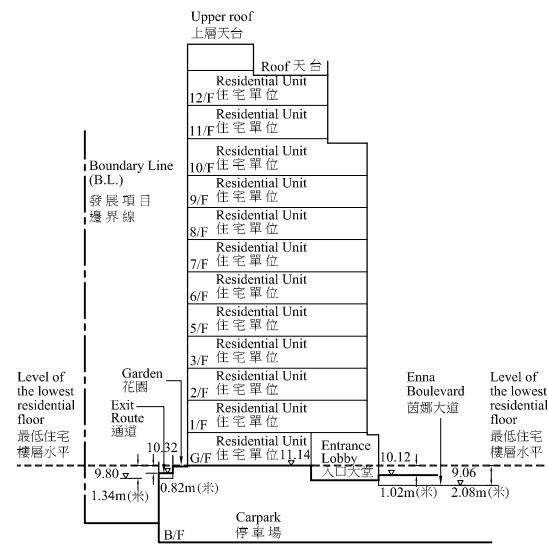
Cross-Section Plan F8a  
橫截面圖 F8a

----- Dotted line denotes the lowest residential floor.  
虛線為最低住宅樓層水平。

The part of walkway adjacent to the building is 8.77 to 9.84 metres above the Hong Kong Principal Datum.  
毗連建築物的一段行人通道為香港主水平基準以上 8.77至 9.84 米。

# Cross-section plan of building in the Development 發展項目中的建築物的橫截面圖

Block 5,  
Enna Boulevard  
茵娜大道第 5 座



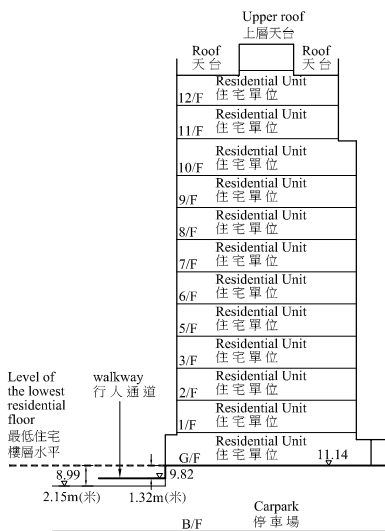
Cross-Section Plan E5  
橫截面圖 E5

----- Dotted line denotes the lowest residential floor.  
虛線為最低住宅樓層水平。

The part of Enna Boulevard adjacent to the building is 9.06 to 10.12 metres above the Hong Kong Principal Datum.  
毗連建築物的一段茵娜大道為香港主水平基準以上 9.06 至 10.12 米。

The part of Exit Route adjacent to the building is 9.80 to 10.32 metres above the Hong Kong Principal Datum.  
毗連建築物的一段通道為香港主水平基準以上 9.80 至 10.32 米。

Block 5,  
Enna Boulevard  
茵娜大道第 5 座

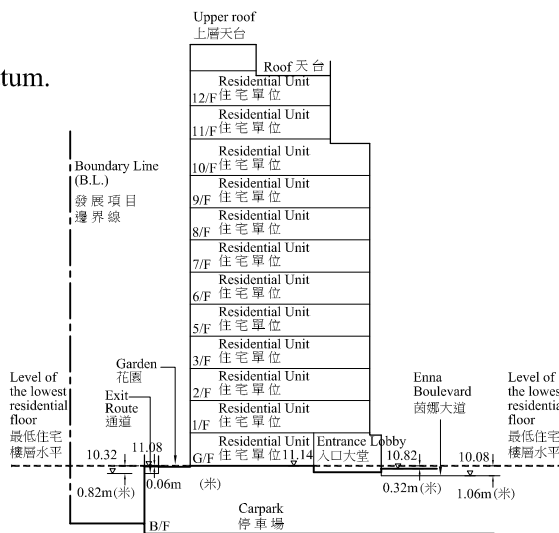


Cross-Section Plan E5a  
橫截面圖 E5a

----- Dotted line denotes the lowest residential floor.  
虛線為最低住宅樓層水平。

The part of walkway adjacent to the building is 8.99 to 9.82 metres above the Hong Kong Principal Datum.  
毗連建築物的一段行人通道為香港主水平基準以上 8.99 至 9.82 米。

Block 6,  
Enna Boulevard  
茵娜大道第 6 座



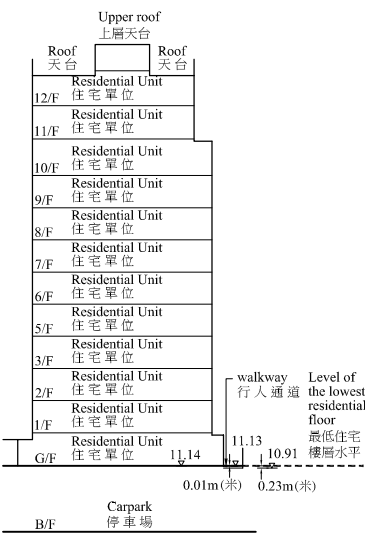
Cross-Section Plan E6  
橫截面圖 E6

----- Dotted line denotes the lowest residential floor.  
虛線為最低住宅樓層水平。

The part of Enna Boulevard adjacent to the building is 10.08 to 10.82 metres above the Hong Kong Principal Datum.  
毗連建築物的一段茵娜大道為香港主水平基準以上 10.08 至 10.82 米。

The part of Exit Route adjacent to the building is 10.32 to 11.08 metres above the Hong Kong Principal Datum.  
毗連建築物的一段通道為香港主水平基準以上 10.32 至 11.08 米。

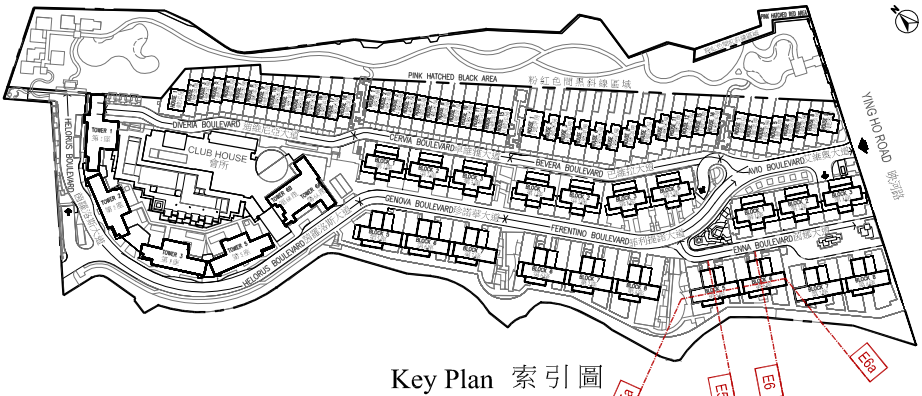
Block 6,  
Enna Boulevard  
茵娜大道第 6 座



Cross-Section Plan E6a  
橫截面圖 E6a

----- Dotted line denotes the lowest residential floor.  
虛線為最低住宅樓層水平。

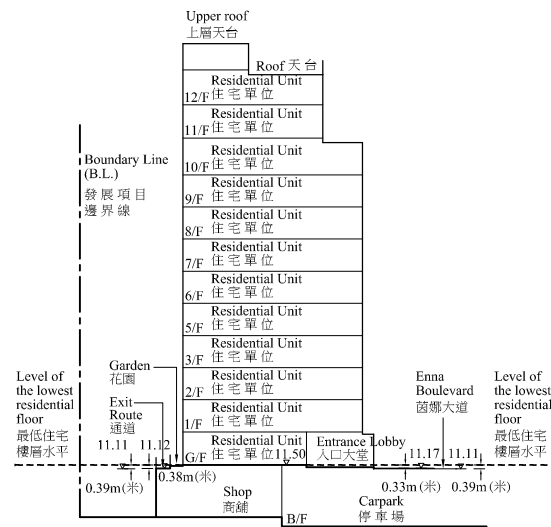
The part of walkway adjacent to the building is 10.91 to 11.13 metres above the Hong Kong Principal Datum.  
毗連建築物的一段行人通道為香港主水平基準以上 10.91 至 11.13 米。





## Cross-section plan of building in the Development 發展項目中的建築物的橫截面圖

Block 7,  
Enna Boulevard  
茵娜大道第 7 座



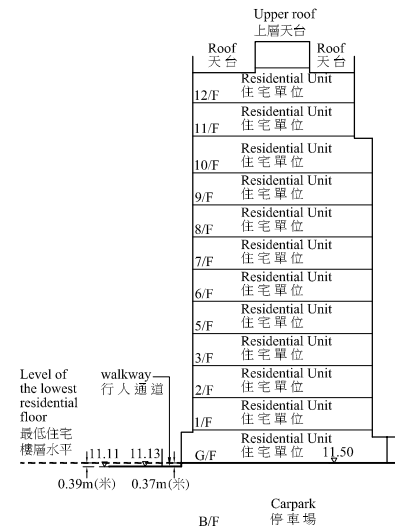
Cross-Section Plan E7  
橫截面圖 E7

----- Dotted line denotes the lowest residential floor.  
虛線為最低住宅樓層水平。

The part of Enna Boulevard adjacent to the building is 11.11 to 11.17 metres above the Hong Kong Principal Datum.  
毗連建築物的一段茵娜大道為香港主水平基準以上 11.11 至 11.17 米。

The part of Exit Route adjacent to the building is 11.11 to 11.12 metres above the Hong Kong Principal Datum. 毗連建築物的一段通道為香港主水平基準以上 11.11 至 11.12 米。

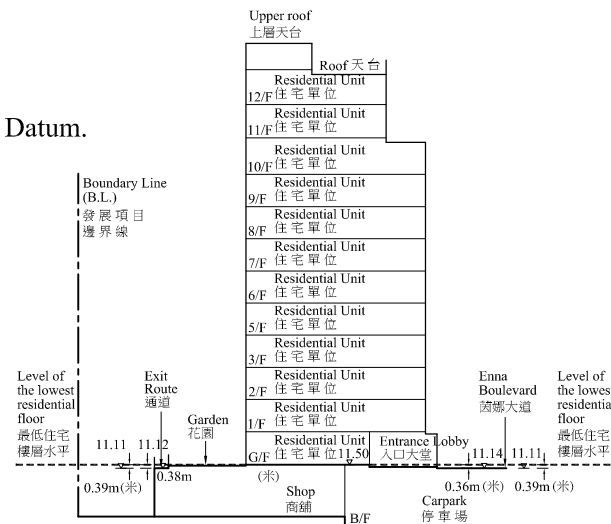
Block 7,  
Enna Boulevard  
茵娜大道第 7 座



Cross-Section Plan E7a  
橫截面圖 E7a

----- Dotted line denotes the lowest residential floor.  
虛線為最低住宅樓層水平。

The part of walkway adjacent to the building is 11.11 to 11.13 metres above the Hong Kong Principal Datum.  
毗連建築物的一段行人通道為香港主水平基準以上 11.11 至 11.13 米。

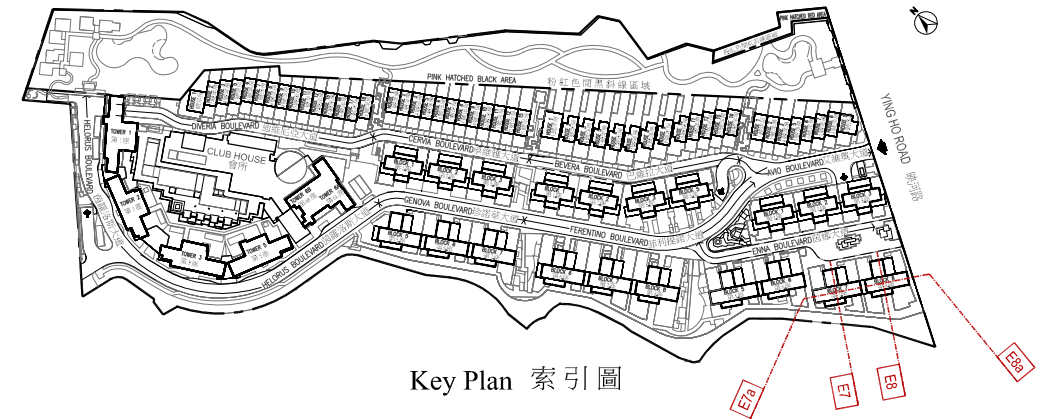


Cross-Section Plan E8  
橫截面圖 E8

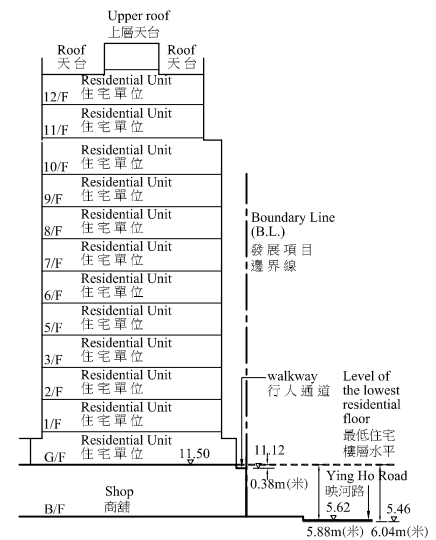
----- Dotted line denotes the lowest residential floor.  
虛線為最低住宅樓層水平。

The part of Enna Boulevard adjacent to the building is 11.11 to 11.14 metres above the Hong Kong Principal Datum.  
毗連建築物的一段茵娜大道為香港主水平基準以上 11.11 至 11.14 米。

The part of Exit Route adjacent to the building is 11.11 to 11.12 metres above the Hong Kong Principal Datum. 毗連建築物的一段通道為香港主水平基準以上 11.11 至 11.12 米。



Block 8,  
Enna Boulevard  
茵娜大道第 8 座



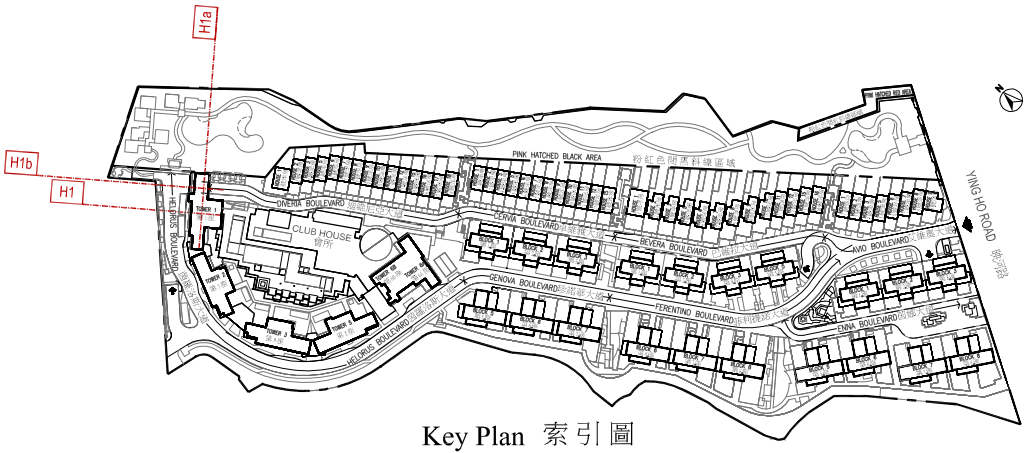
Cross-Section Plan E8a  
橫截面圖 E8a

----- Dotted line denotes the lowest residential floor.  
虛線為最低住宅樓層水平。

The part of Ying Ho Road adjacent to the building is 5.46 to 5.62 metres above the Hong Kong Principal Datum.  
毗連建築物的一段映河路為香港主水平基準以上 5.46 至 5.62 米。

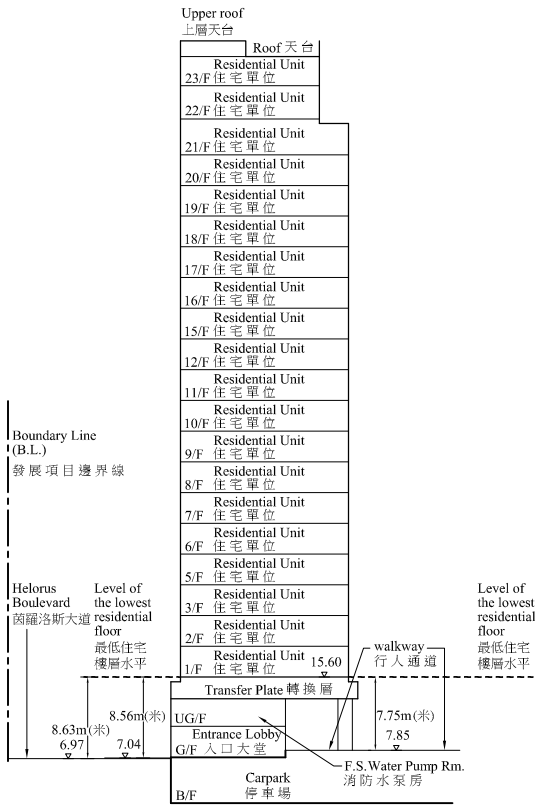
The part of walkway adjacent to the building is 11.12 metres above the Hong Kong Principal Datum.  
毗連建築物的一段行人通道為香港主水平基準以上 11.12 米。

# Cross-section plan of building in the Development 發展項目中的建築物的橫截面圖



## Tower 1, Helorus Boulevard

茵羅洛斯大道第1座



### Cross-Section Plan H1

橫截面圖 H1

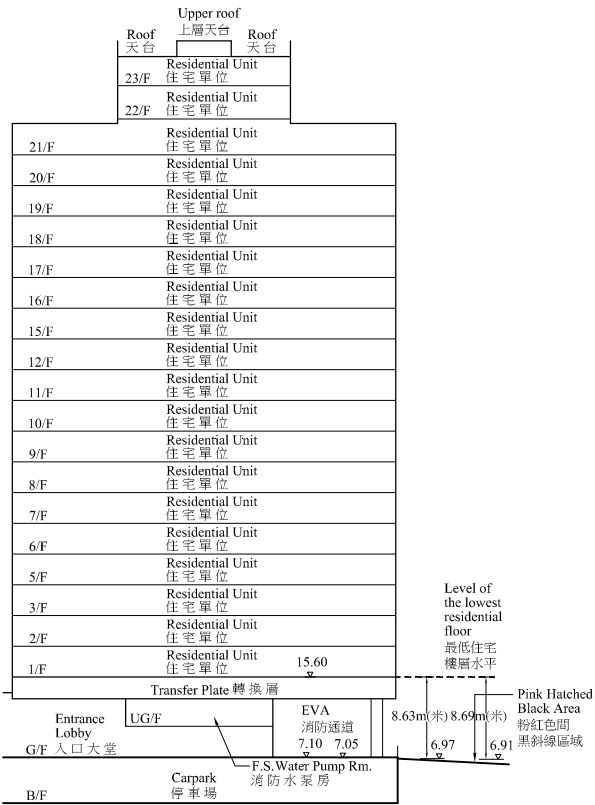
----- Dotted line denotes the lowest residential floor.  
虛線為最低住宅樓層水平。

The part of Helorus Boulevard adjacent to the building is 6.97 to 7.04 metres above the Hong Kong Principal Datum.  
毗連建築物的一段茵羅洛斯大道為香港主水平基準以上 6.97 至 7.04 米。

The part of walkway adjacent to the building is 7.85 metres above the Hong Kong Principal Datum.  
毗連建築物的一段行人通道為香港主水平基準以上 7.85 米。

## Tower 1, Helorus Boulevard

茵羅洛斯大道第1座



### Cross-Section Plan H1a

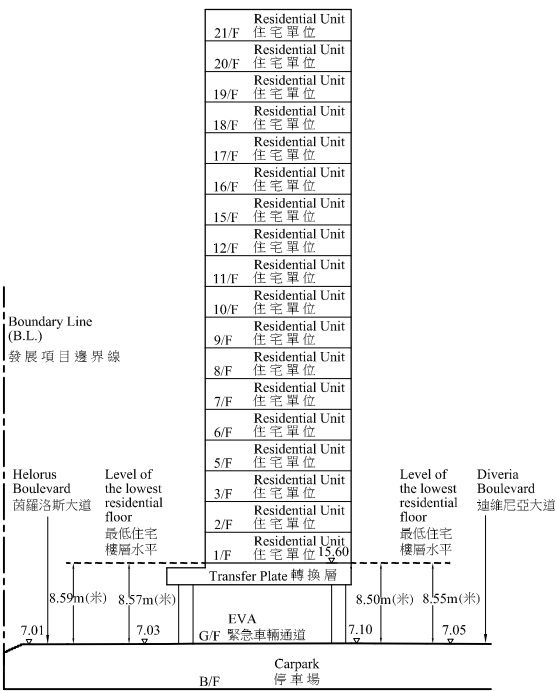
橫截面圖 H1a

----- Dotted line denotes the lowest residential floor.  
虛線為最低住宅樓層水平。

The part of Pink Hatched Black Area adjacent to the building is 6.91 to 6.97 metres above the Hong Kong Principal Datum.  
毗連建築物的一段粉紅色間黑斜線區域為香港主水平基準以上 6.91 至 6.97 米。

## Tower 1, Helorus Boulevard

茵羅洛斯大道第1座



### Cross-Section Plan H1b

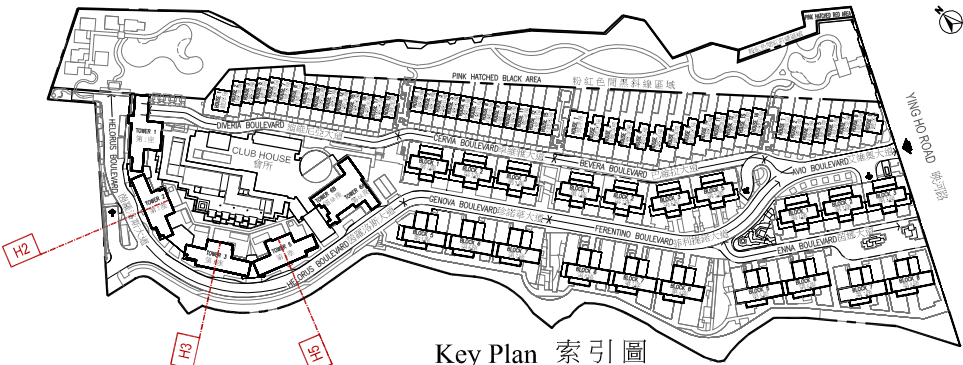
橫截面圖 H1b

----- Dotted line denotes the lowest residential floor.  
虛線為最低住宅樓層水平。

The part of Helorus Boulevard adjacent to the building is 7.01 to 7.03 metres above the Hong Kong Principal Datum.  
毗連建築物的一段茵羅洛斯大道為香港主水平基準以上 7.01 至 7.03 米。

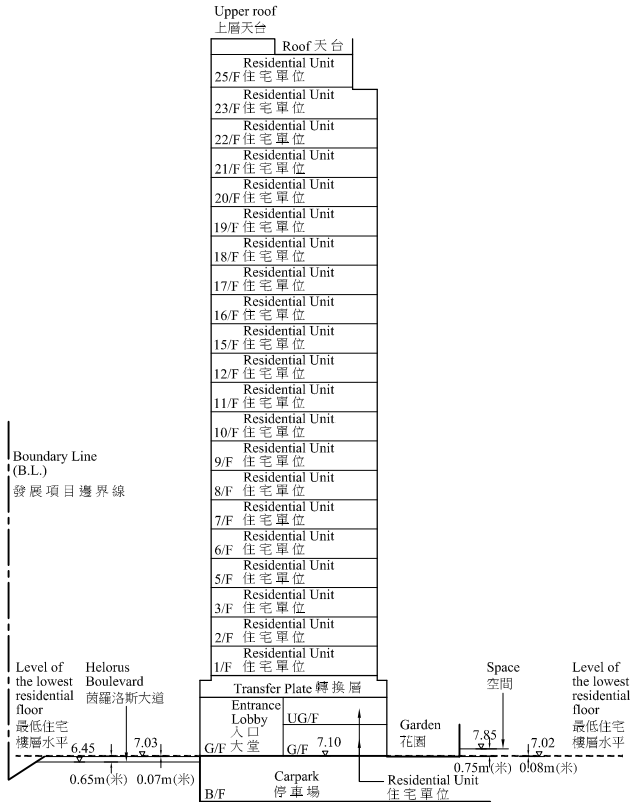
The part of Diveria Boulevard adjacent to the building is 7.05 to 7.10 metres above the Hong Kong Principal Datum.  
毗連建築物的一段迪維尼亞大道為香港主水平基準以上 7.05 至 7.10 米。

Cross-section plan of building in the Development 發展項目中的建築物的橫截面圖



Key Plan 索引圖

Tower 2,  
Helorus Boulevard  
茵羅洛斯大道第2座



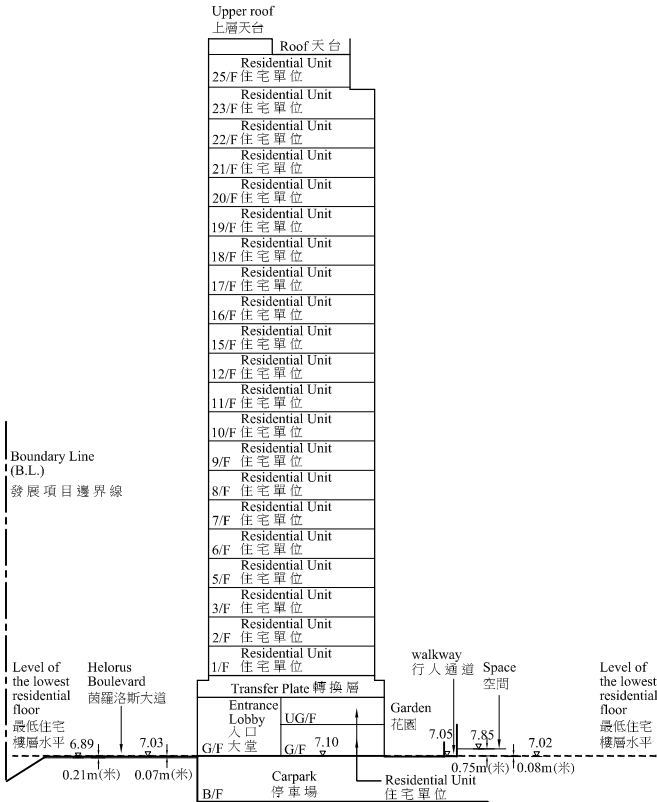
Cross-Section Plan H2  
橫截面圖 H2

----- Dotted line denotes the lowest residential floor.  
虛線為最低住宅樓層水平。

The part of Helorus Boulevard adjacent to the building is 6.45 to 7.03 metres above the Hong Kong Principal Datum.  
毗連建築物的一段茵羅洛斯大道為香港主水平基準以上 6.45 至 7.03 米。

The part of Space adjacent to the building is 7.02 to 7.85 metres above the Hong Kong Principal Datum.  
毗連建築物的一段空間為香港主水平基準以上 7.02 至 7.85 米。

Tower 3  
Helorus Boulevard  
茵羅洛斯大道第3座



Cross-Section Plan H3  
橫截面圖 H3

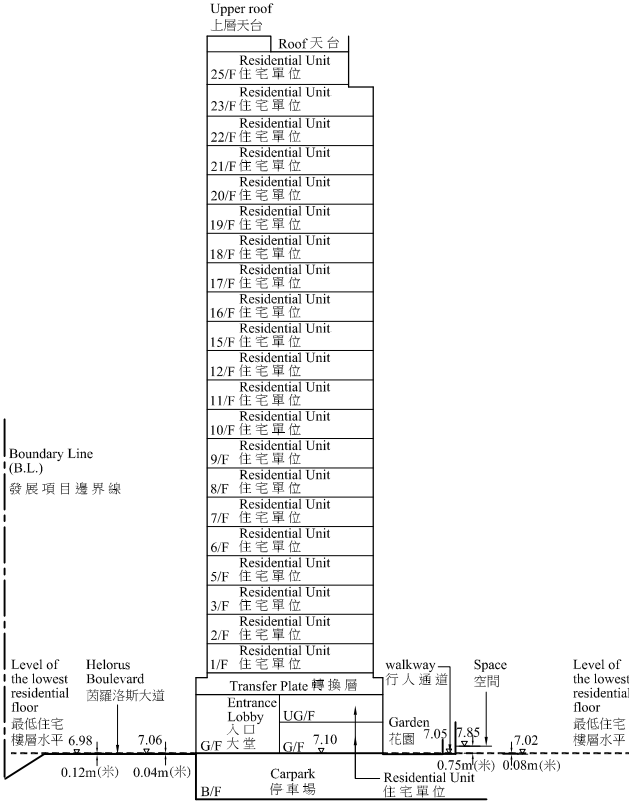
----- Dotted line denotes the lowest residential floor.  
虛線為最低住宅樓層水平。

The part of Helorus Boulevard adjacent to the building is 6.89 to 7.03 metres above the Hong Kong Principal Datum.  
毗連建築物的一段茵羅洛斯大道為香港主水平基準以上 6.89 至 7.03 米。

The part of walkway adjacent to the building is 7.05 metres above the Hong Kong Principal Datum.  
毗連建築物的一段行人通道為香港主水平基準以上 7.05 米。

The part of Space adjacent to the building is 7.02 to 7.85 metres above the Hong Kong Principal Datum.  
毗連建築物的一段空間為香港主水平基準以上 7.02 至 7.85 米。

Tower 5  
Helorus Boulevard  
茵羅洛斯大道第5座



Cross-Section Plan H5  
橫截面圖 H5

----- Dotted line denotes the lowest residential floor.  
虛線為最低住宅樓層水平。

The part of Helorus Boulevard adjacent to the building is 6.98 to 7.06 metres above the Hong Kong Principal Datum.  
毗連建築物的一段茵羅洛斯大道為香港主水平基準以上 6.98 至 7.06 米。

The part of walkway adjacent to the building is 7.05 metres above the Hong Kong Principal Datum.  
毗連建築物的一段行人通道為香港主水平基準以上 7.05 米。

The part of Space adjacent to the building is 7.02 to 7.85 metres above the Hong Kong Principal Datum.  
毗連建築物的一段空間為香港主水平基準以上 7.02 至 7.85 米。



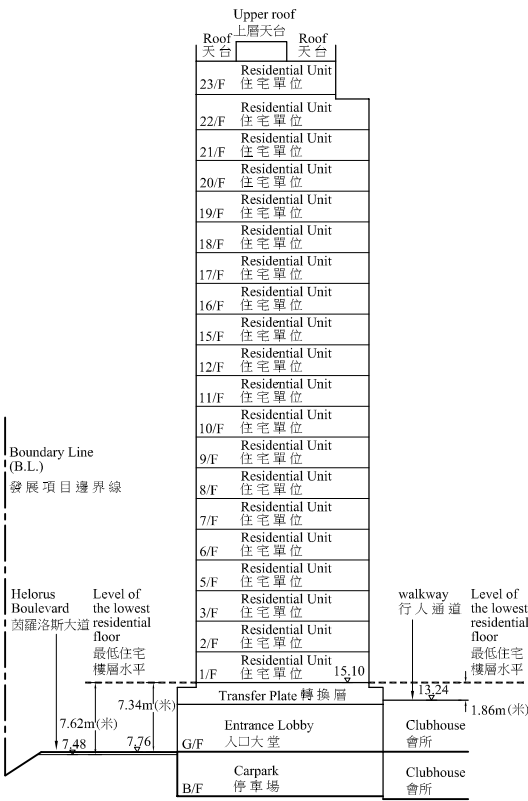
# Cross-section plan of building in the Development 發展項目中的建築物的橫截面圖



Key Plan 索引圖

## Tower 6A & 6B , Helorus Boulevard

茵羅洛斯大道第6A及6B座



Cross-Section Plan H6

橫截面圖 H6

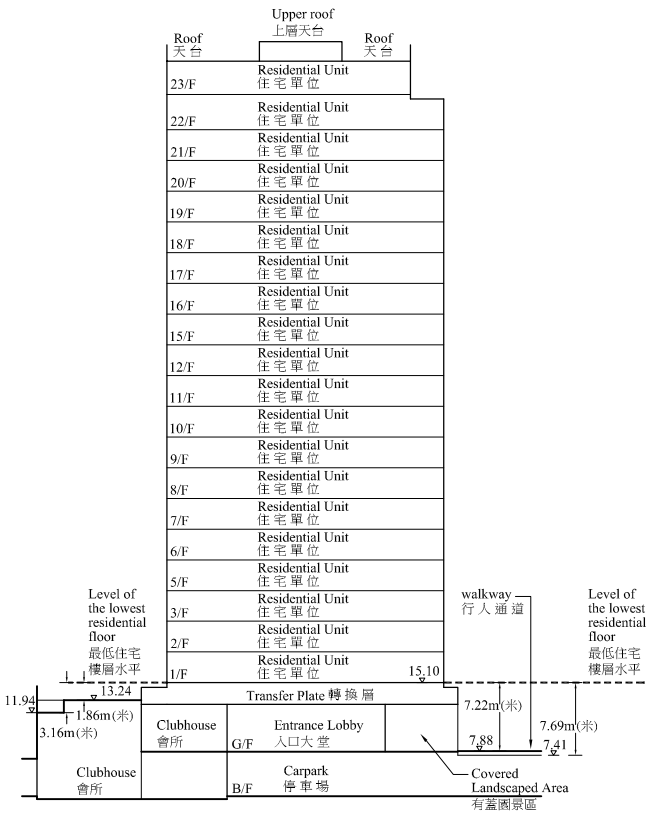
----- Dotted line denotes the lowest residential floor.  
虛線為最低住宅樓層水平。

The part of Helorus Boulevard adjacent to the building is 7.48 to 7.76 metres above the Hong Kong Principal Datum.  
毗連建築物的一段茵羅洛斯大道為香港主水平基準以上 7.48 至 7.76 米。

The part of walkway adjacent to the building is 13.24 metres above the Hong Kong Principal Datum.  
毗連建築物的一段行人通道為香港主水平基準以上 13.24 米。

## Tower 6A & 6B, Helorus Boulevard

茵羅洛斯大道第6A及6B座



Cross-Section Plan H6a

橫截面圖 H6a

----- Dotted line denotes the lowest residential floor.  
虛線為最低住宅樓層水平。

The part of walkway adjacent to the building on 1/F is 11.94 to 13.24 metres above the Hong Kong Principal Datum.  
毗連建築物的一段一樓之行人通道為香港主水平基準以上 11.94 至 13.24 米。

The part of walkway adjacent to the building on G/F is 7.41 to 7.88 metres above the Hong Kong Principal Datum.  
毗連建築物的一段地面層之行人通道為香港主水平基準以上 7.41 至 7.88 米。



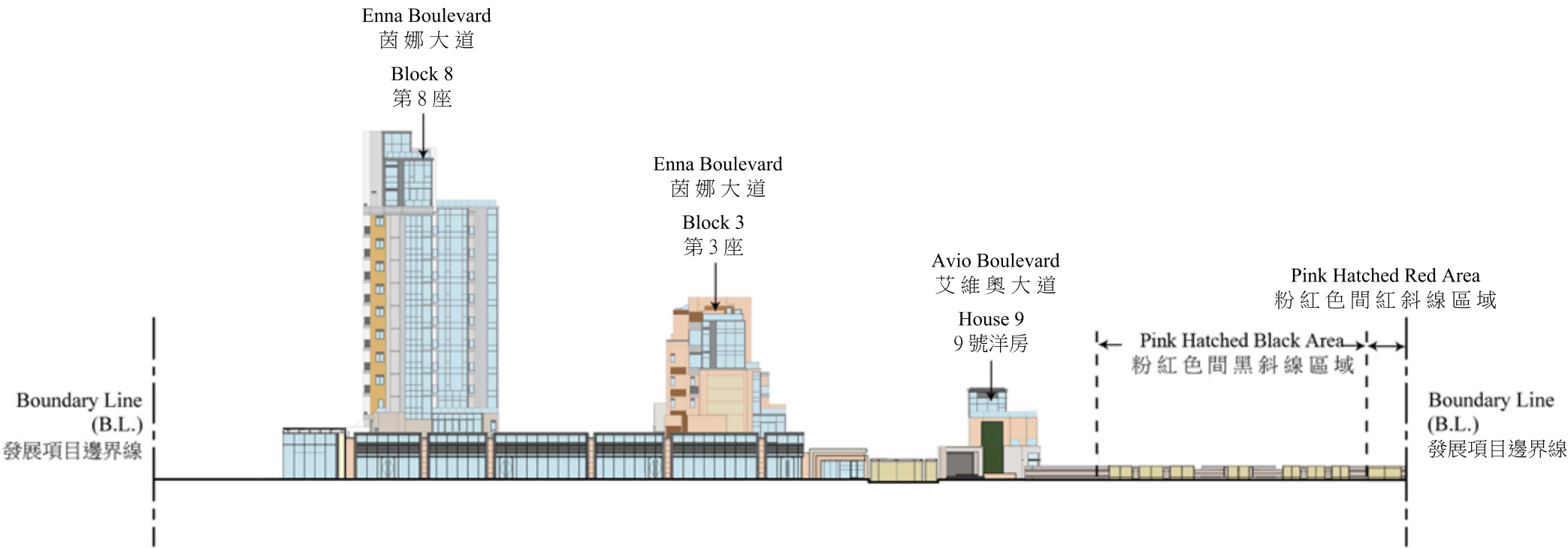
Key Plan 索引圖

The Authorized Person for the Development has certified that the elevations shown on this plan:

- 1. are prepared on the basis of the approved building plans for the Development as at 14<sup>th</sup> August, 2013 ;
- 2. are in general accordance with the outward appearance of the Development.

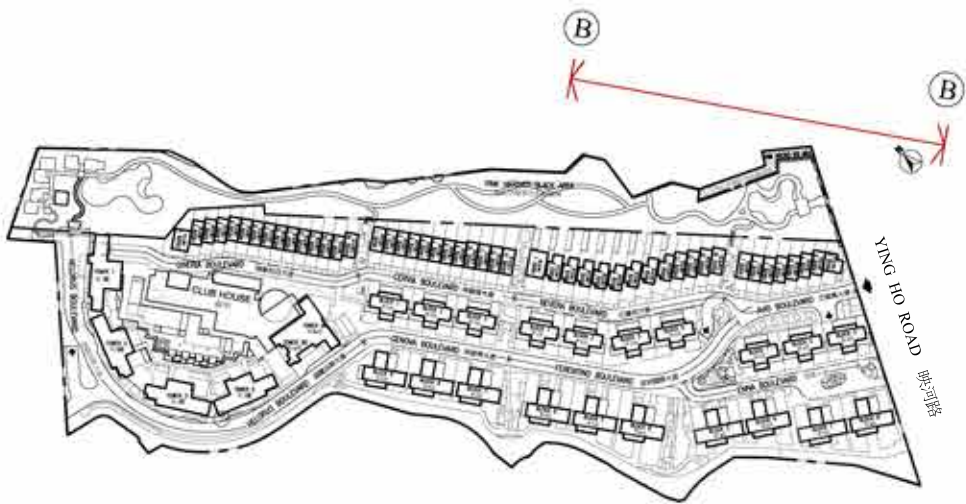
發展項目的認可人士已證明本圖所顯示的立面：

- 1. 以 2013 年 8月14日此發展項目經批准的建築圖則為基礎擬備；
- 2. 大致上與該發展項目的外觀一致。



Elevation Plan A  
立面圖 A

Elevation plan 立面圖



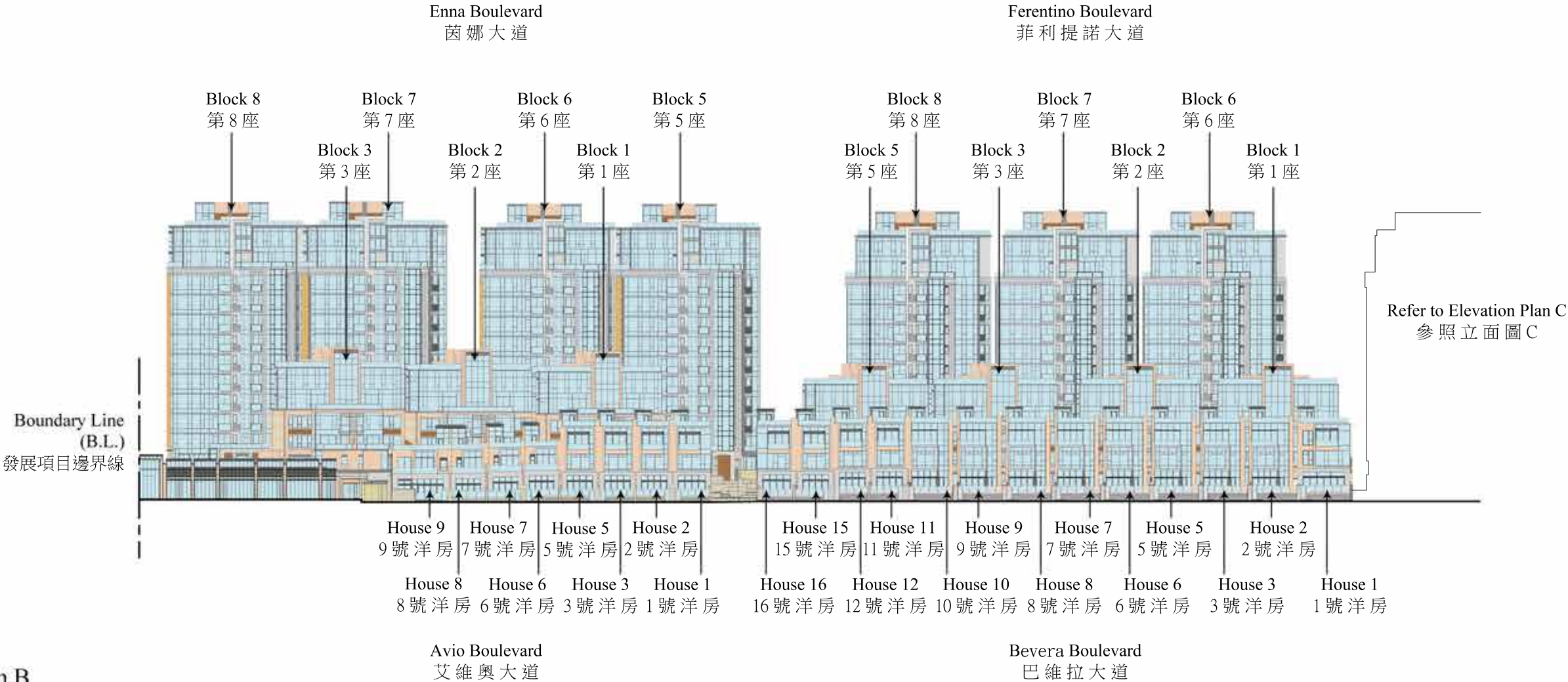
Key Plan 索引圖

The Authorized Person for the Development has certified that the elevations shown on this plan:

1. are prepared on the basis of the approved building plans for the Development as at 14<sup>th</sup> August, 2013;
2. are in general accordance with the outward appearance of the Development.

發展項目的認可人士已證明本圖所顯示的立面：

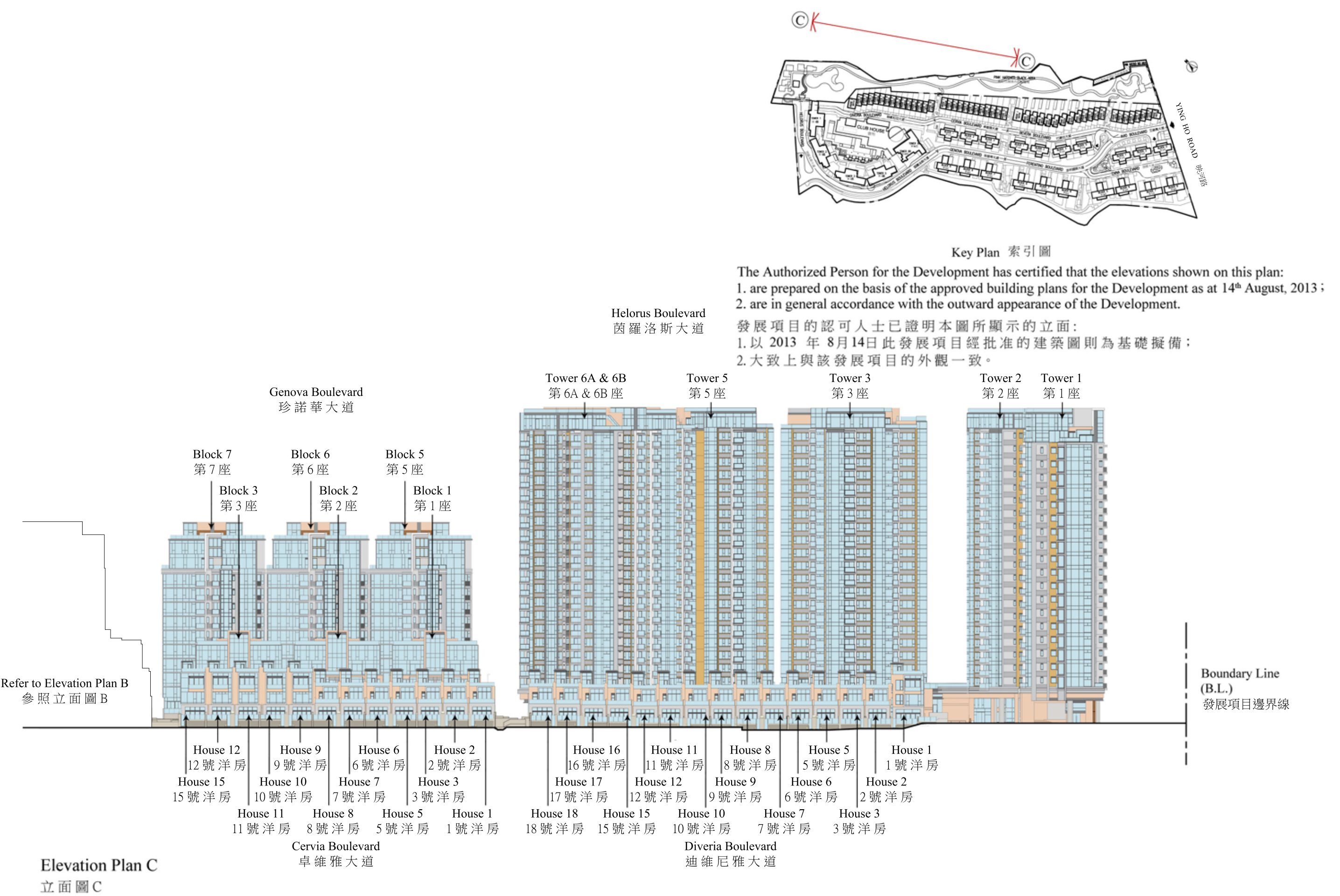
1. 以 2013 年 8 月 14 日此發展項目經批准的建築圖則為基礎擬備；
2. 大致上與該發展項目的外觀一致。



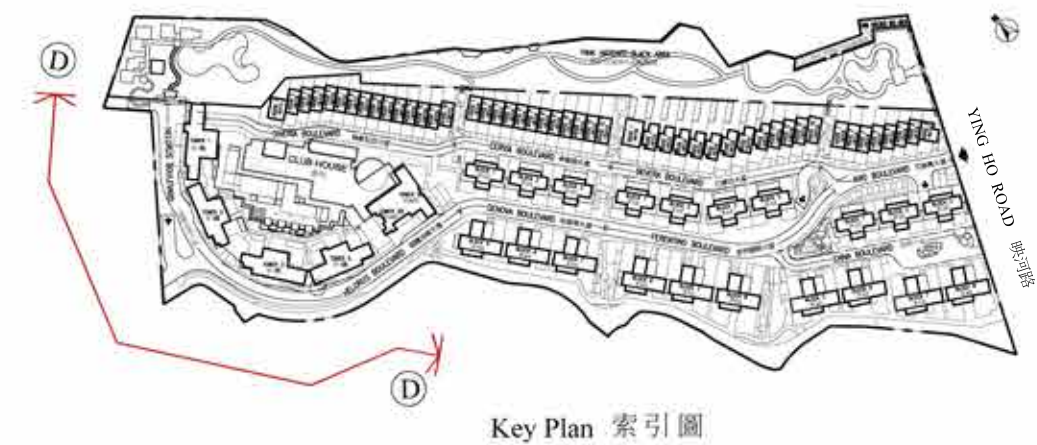
Elevation Plan B  
立面圖 B



Elevation plan 立面圖







The Authorized Person for the Development has certified that the elevations shown on this plan:

1. are prepared on the basis of the approved building plans for the Development as at 14<sup>th</sup> August, 2013 ;
2. are in general accordance with the outward appearance of the Development.

發展項目的認可人士已證明本圖所顯示的立面：

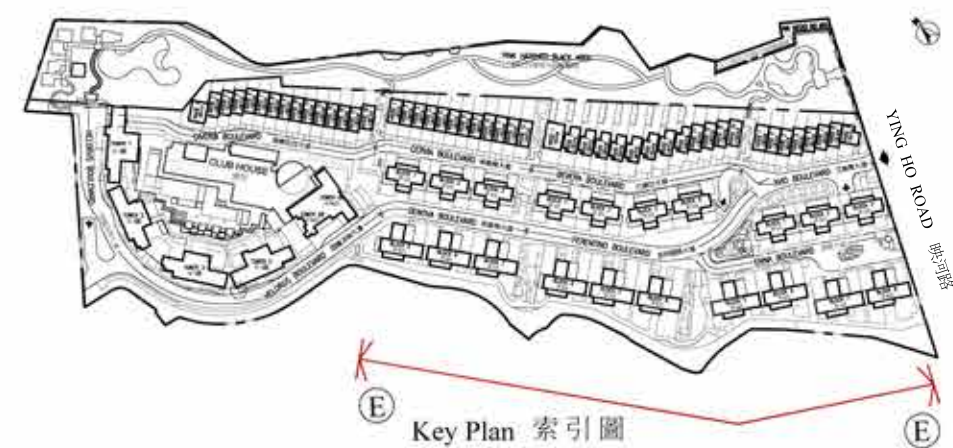
- 1.以 2013 年 8月14日此發展項目經批准的建築圖則為基礎擬備；
- 2.大致上與該發展項目的外觀一致。

Helorus Boulevard  
茵羅洛斯大道



Elevation Plan D  
立面圖 D





The Authorized Person for the Development has certified that the elevations shown on this plan:

1. are prepared on the basis of the approved building plans for the Development as at 14<sup>th</sup> August, 2013;
2. are in general accordance with the outward appearance of the Development.

發展項目的認可人士已證明本圖所顯示的立面：

1. 以 2013 年 8月14日此發展項目經批准的建築圖則為基礎擬備；
2. 大致上與該發展項目的外觀一致。



Elevation Plan E  
立面圖 E



## Information on common facilities in the Development 發展項目中的公用設施的資料

		Covered 有蓋	Uncovered 露天	Total Area 總面積
Residents' Clubhouse (including any recreational facilities for residents' use) 住客會所之面積 (包括供住客使用的任何康樂設施)	sq.ft. 平方呎	42776	35041	77817
	sq.m. 平方米	3973.996	3255.361	7229.357
Communal garden or play area for residents' use on the roof, or on any floor between the roof and the lowest residential floor, of a building in the Development 位於發展項目中的建築物的天台或在天台和最低一層住宅樓層之間的任何一層的、供住客使用的公用花園或遊樂地方	sq.ft. 平方呎	---	---	---
	sq.m. 平方米	---	---	---
Communal garden or play area for residents' use below the lowest residential floor of a building in the Development 位於發展項目中的建築物的最低一層住宅樓層以下的、供住客使用的公用花園或遊樂地方	sq.ft. 平方呎	1979	153945	155924
	sq.m. 平方米	183.825	14301.832	14485.657

Note : Areas in square metres as specified in the above are based on the latest approved building plans. Areas in square feet are converted at a rate of 1 square metre to 10.764 square feet and rounded off to nearest whole square foot, which may be slightly different from the area presented in square metres.

備註：上述所列以平方米顯示之面積乃依據最新的批准建築圖則。以平方呎顯示之面積均依據1平方米=10.764平方呎換算，並以四捨五入至整數平方呎，與以平方米表述之面積可能有些微差異。

## Inspection of plans and deed of mutual covenant 閱覽圖則及公契

1. A copy of the outline zoning plan relating to the development is available at [www.ozp.tpb.gov.hk](http://www.ozp.tpb.gov.hk).

2. A copy of the deed of mutual covenant in respect of the residential property that has been executed is available for inspection at the place at which the residential property is offered to be sold.

3. The inspection is free of charge.
1. 備有關乎本發展項目的分區計劃大綱圖的文本供閱覽的互聯網網站的網址為[www.ozp.tpb.gov.hk](http://www.ozp.tpb.gov.hk)。

2. 關於住宅物業的已簽立的公契已存放在住宅物業的售樓處，以供閱覽。

3. 無須為閱覽付費。