


# 08 | AERIAL PHOTOGRAPH OF THE DEVELOPMENT

發展項目的鳥瞰照片



 Location of the Development  
發展項目的位置

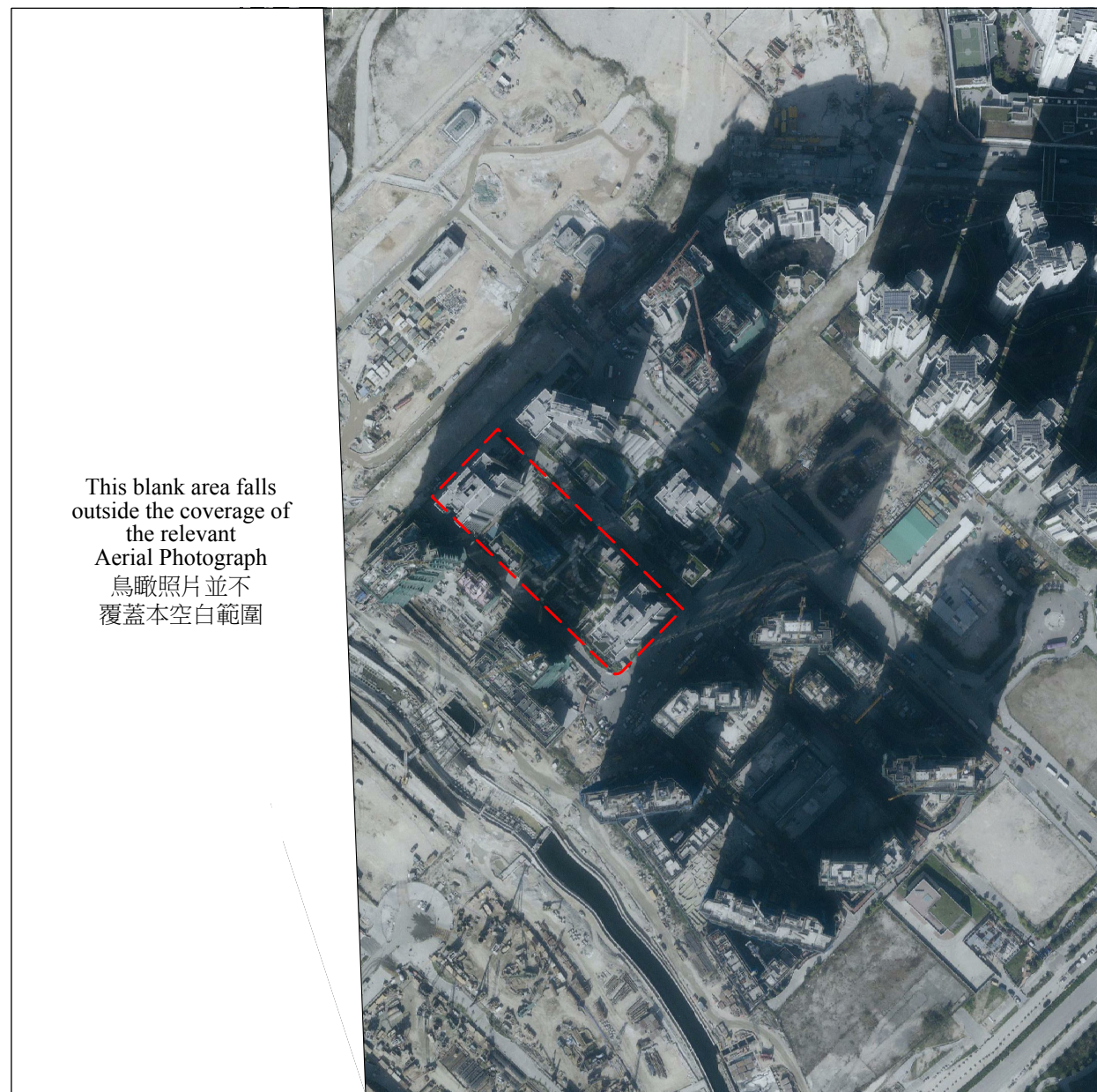
Adopted from part of the aerial photograph taken by the Survey and Mapping Office of Lands Department at a flying height of 6,000 feet, photo no. E034169C, dated 10 March 2018.  
摘錄自地政總署測繪處於2018年3月10日在6,000呎飛行高度拍攝之鳥瞰照片，編號為E034169C。

Notes 附註:


- (1) Due to the technical reason that the boundary of the Development is irregular, the aerial photograph has shown more than the area required under the Residential Properties (First-hand Sales) Ordinance (Cap 621).  
由於發展項目邊界不規則的技術原因，鳥瞰照片所顯示之範圍多於《一手住宅物業銷售條例》（第621章）所要求的範圍。
- (2) Survey and Mapping Office, Lands Department, The Government of HKSAR © Copyright reserved - reproduction by permission only.  
香港特別行政區政府地政總署測繪處©版權所有，未經許可，不得複製。

# 08 | AERIAL PHOTOGRAPH OF THE DEVELOPMENT

## 發展項目的鳥瞰照片



This blank area falls outside the coverage of the relevant Aerial Photograph  
鳥瞰照片並不覆蓋本空白範圍

 Location of the Development  
發展項目的位置

Adopted from part of the aerial photograph taken by the Survey and Mapping Office of Lands Department at a flying height of 6,000 feet, photo no. E030707C, dated 27 December 2017.  
摘錄自地政總署測繪處於2017年12月27日在6,000呎飛行高度拍攝之鳥瞰照片，編號為E030707C。

Notes 附註:


- (1) Due to the technical reason that the boundary of the Development is irregular, the aerial photograph has shown more than the area required under the Residential Properties (First-hand Sales) Ordinance (Cap 621).  
由於發展項目邊界不規則的技術原因，鳥瞰照片所顯示之範圍多於《一手住宅物業銷售條例》（第621章）所要求的範圍。
- (2) Survey and Mapping Office, Lands Department, The Government of HKSAR © Copyright reserved - reproduction by permission only.  
香港特別行政區政府地政總署測繪處©版權所有，未經許可，不得複製。



# 08 | AERIAL PHOTOGRAPH OF THE DEVELOPMENT

發展項目的鳥瞰照片



 Location of the Development  
發展項目的位置

Adopted from part of the aerial photograph taken by the Survey and Mapping Office of Lands Department at a flying height of 6,900 feet, photo no. E045383C, dated 11 September 2018.  
摘錄自地政總署測繪處於2018年9月11日在6,900呎飛行高度拍攝之鳥瞰照片，編號為E045383C。

Notes 附註:

- (1) Due to the technical reason that the boundary of the Development is irregular, the aerial photograph has shown more than the area required under the Residential Properties (First-hand Sales) Ordinance (Cap 621).  
由於發展項目邊界不規則的技術原因，鳥瞰照片所顯示之範圍多於《一手住宅物業銷售條例》（第621章）所要求的範圍。
- (2) Survey and Mapping Office, Lands Department, The Government of HKSAR © Copyright reserved - reproduction by permission only.  
香港特別行政區政府地政總署測繪處©版權所有，未經許可，不得複製。