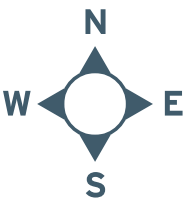


AERIAL PHOTOGRAPH OF THE DEVELOPMENT

發展項目的鳥瞰照片



This blank area falls outside the coverage of the relevant aerial photograph.
此鳥瞰照片並不覆蓋本空白範圍

● Location of the Development
發展項目的位置

Adopted from part of the aerial photo taken by the Survey and Mapping Office of the Lands Department at a flying height of 6,000 feet, photo No.E030855C, dated 27th December 2017.

摘錄自地政總署測繪處於2017年12月27日在6,000呎飛行高度拍攝之鳥瞰照片，編號為E030855C。

Survey and Mapping Office, Lands Department, The Government of HKSAR © Copyright reserved – reproduction by permission only.
香港特別行政區政府地政總署測繪處©版權所有，未經許可，不得複製。

Notes:

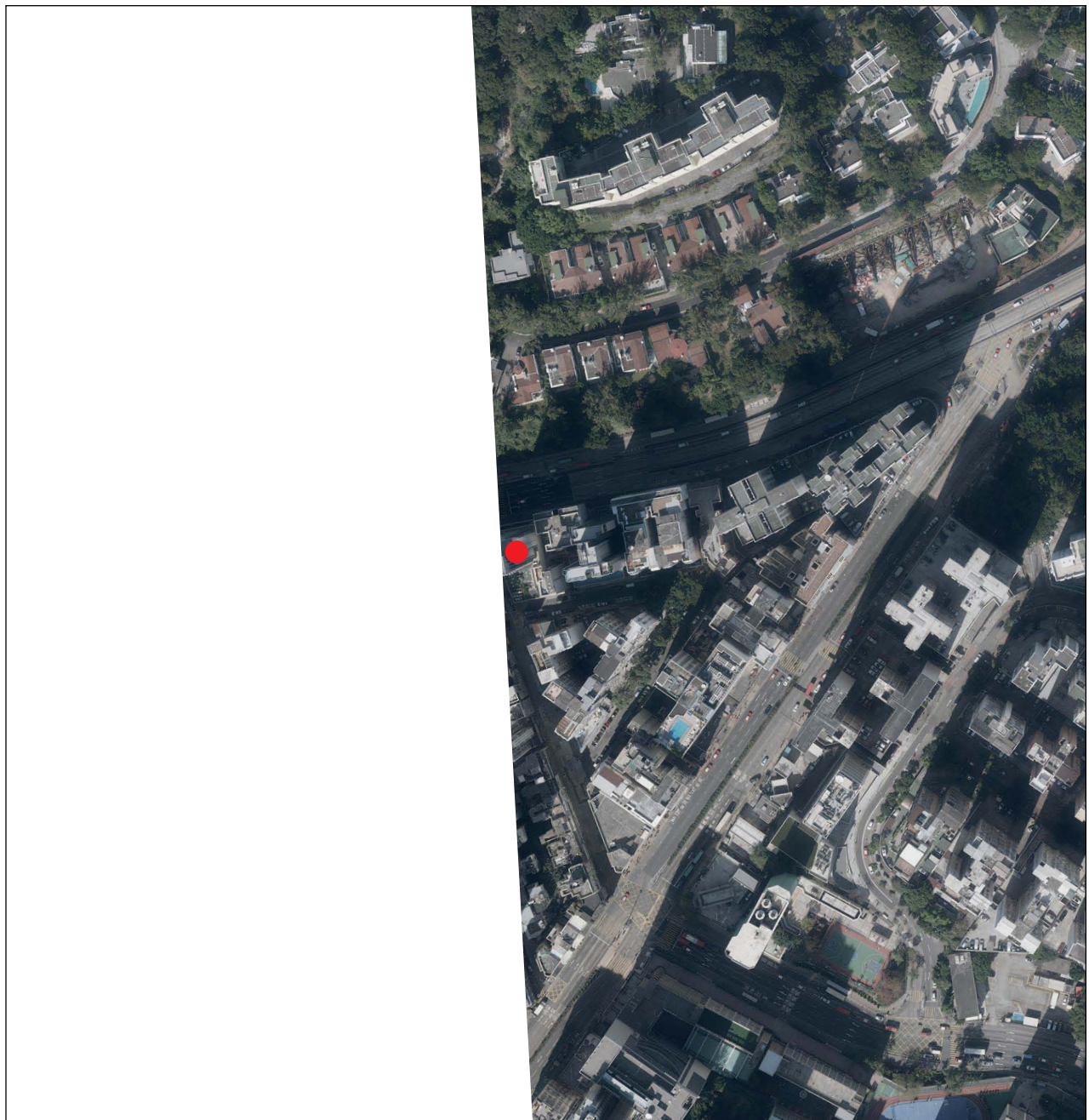
1. The latest aerial photographs as at the date of printing of the Sales Brochure are available for free inspection at the sales office during opening hours.
2. The aerial photographs may show more than the area required under the Residential Properties (First-hand Sales) Ordinance due to the technical reason that the boundary of the Development is irregular.

附註

1. 在印刷售樓說明書當日所適用的最新的鳥瞰照片可於售樓處開放時間內免費查閱。
2. 由於發展項目的邊界不規則的技術原因，此鳥瞰照片所顯示的範圍可能超過《一手住宅物業銷售條例》所規定的範圍。

AERIAL PHOTOGRAPH OF THE DEVELOPMENT

發展項目的鳥瞰照片



● Location of the Development
發展項目的位置

Adopted from part of the aerial photo taken by the Survey and Mapping Office of the Lands Department at a flying height of 6,000 feet, photo No.E030857C, dated 27th December 2017.

摘錄自地政總署測繪處於2017年12月27日在6,000呎飛行高度拍攝之鳥瞰照片，編號為E030857C。

Survey and Mapping Office, Lands Department, The Government of HKSAR © Copyright reserved – reproduction by permission only.
香港特別行政區政府地政總署測繪處©版權所有，未經許可，不得複製。

Notes:

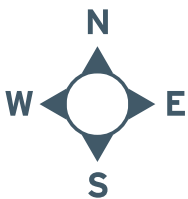
1. The latest aerial photographs as at the date of printing of the Sales Brochure are available for free inspection at the sales office during opening hours.
2. The aerial photographs may show more than the area required under the Residential Properties (First-hand Sales) Ordinance due to the technical reason that the boundary of the Development is irregular.

附註:

1. 在印刷售樓說明書當日所適用的最新的鳥瞰照片可於售樓處開放時間內免費查閱。
2. 由於發展項目的邊界不規則的技術原因，此鳥瞰照片所顯示的範圍可能超過《一手住宅物業銷售條例》所規定的範圍。

AERIAL PHOTOGRAPH OF THE DEVELOPMENT

發展項目的鳥瞰照片



This blank area falls outside the coverage of the relevant aerial photograph.
此鳥瞰照片並不覆蓋本空白範圍

Adopted from part of the aerial photo taken by the Survey and Mapping Office of the Lands Department at a flying height of 6,000 feet, photo No.E034160C, dated 10th March 2018.

摘錄自地政總署測繪處於2018年3月10日在6,000呎飛行高度拍攝之鳥瞰照片，編號為E034160C。

Survey and Mapping Office, Lands Department, The Government of HKSAR © Copyright reserved – reproduction by permission only.
香港特別行政區政府地政總署測繪處©版權所有，未經許可，不得複製。

Notes:

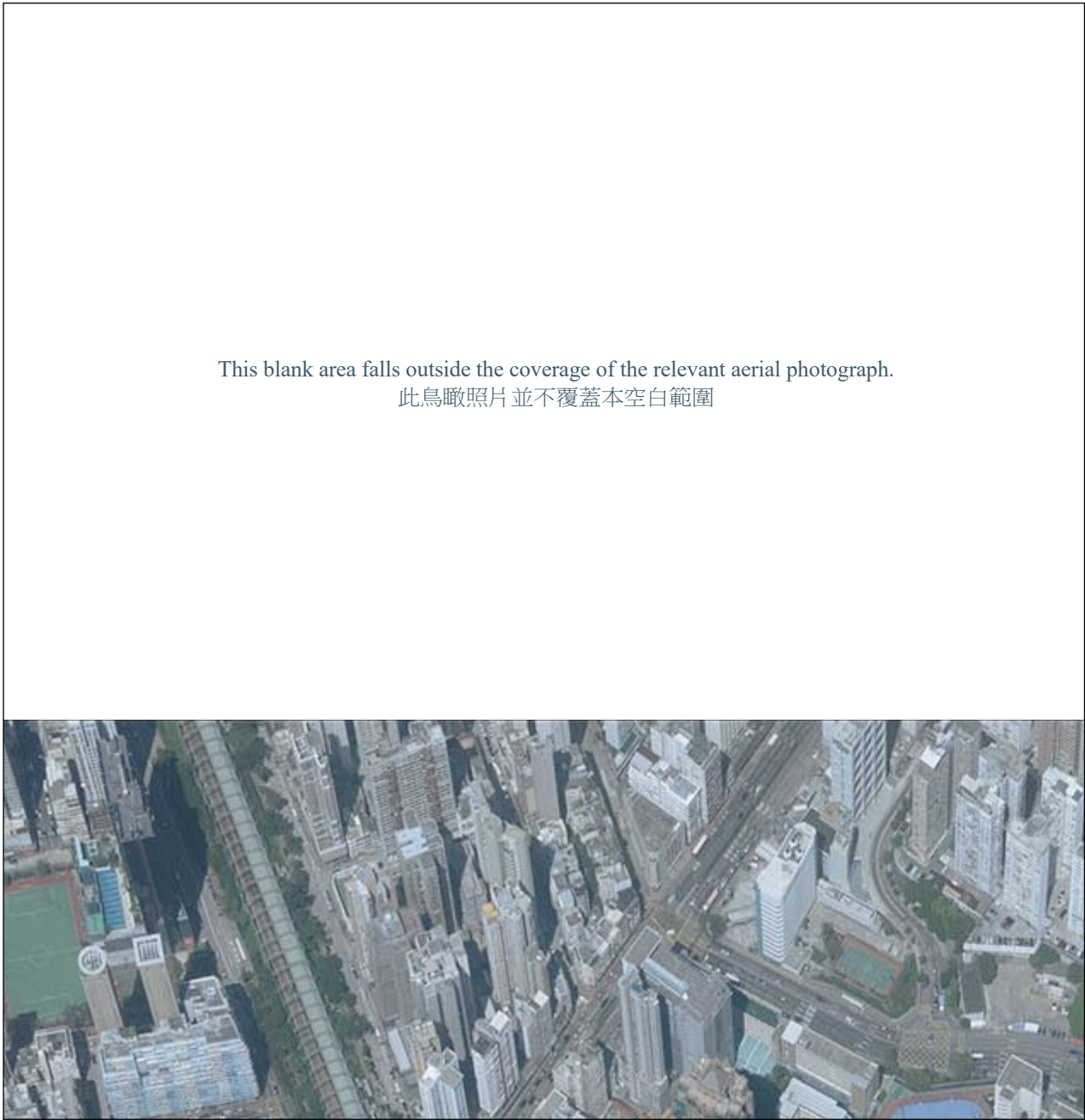
1. The latest aerial photographs as at the date of printing of the Sales Brochure are available for free inspection at the sales office during opening hours.
2. The aerial photographs may show more than the area required under the Residential Properties (First-hand Sales) Ordinance due to the technical reason that the boundary of the Development is irregular.

附註:

1. 在印刷售樓說明書當日所適用的最新的鳥瞰照片可於售樓處開放時間內免費查閱。
2. 由於發展項目的邊界不規則的技術原因，此鳥瞰照片所顯示的範圍可能超過《一手住宅物業銷售條例》所規定的範圍。

AERIAL PHOTOGRAPH OF THE DEVELOPMENT

發展項目的鳥瞰照片



Adopted from part of the aerial photo taken by the Survey and Mapping Office of the Lands Department at a flying height of 6,900 feet, photo No.E046776C, dated 5th October 2018.

摘錄自地政總署測繪處於2018年10月5日在6,900呎飛行高度拍攝之鳥瞰照片，編號為E046776C。

Survey and Mapping Office, Lands Department, The Government of HKSAR © Copyright reserved – reproduction by permission only.
香港特別行政區政府地政總署測繪處©版權所有，未經許可，不得複製。

Notes:

1. The latest aerial photographs as at the date of printing of the Sales Brochure are available for free inspection at the sales office during opening hours.
2. The aerial photographs may show more than the area required under the Residential Properties (First-hand Sales) Ordinance due to the technical reason that the boundary of the Development is irregular.

附註:

1. 在印刷售樓說明書當日所適用的最新的鳥瞰照片可於售樓處開放時間內免費查閱。
2. 由於發展項目的邊界不規則的技術原因，此鳥瞰照片所顯示的範圍可能超過《一手住宅物業銷售條例》所規定的範圍。