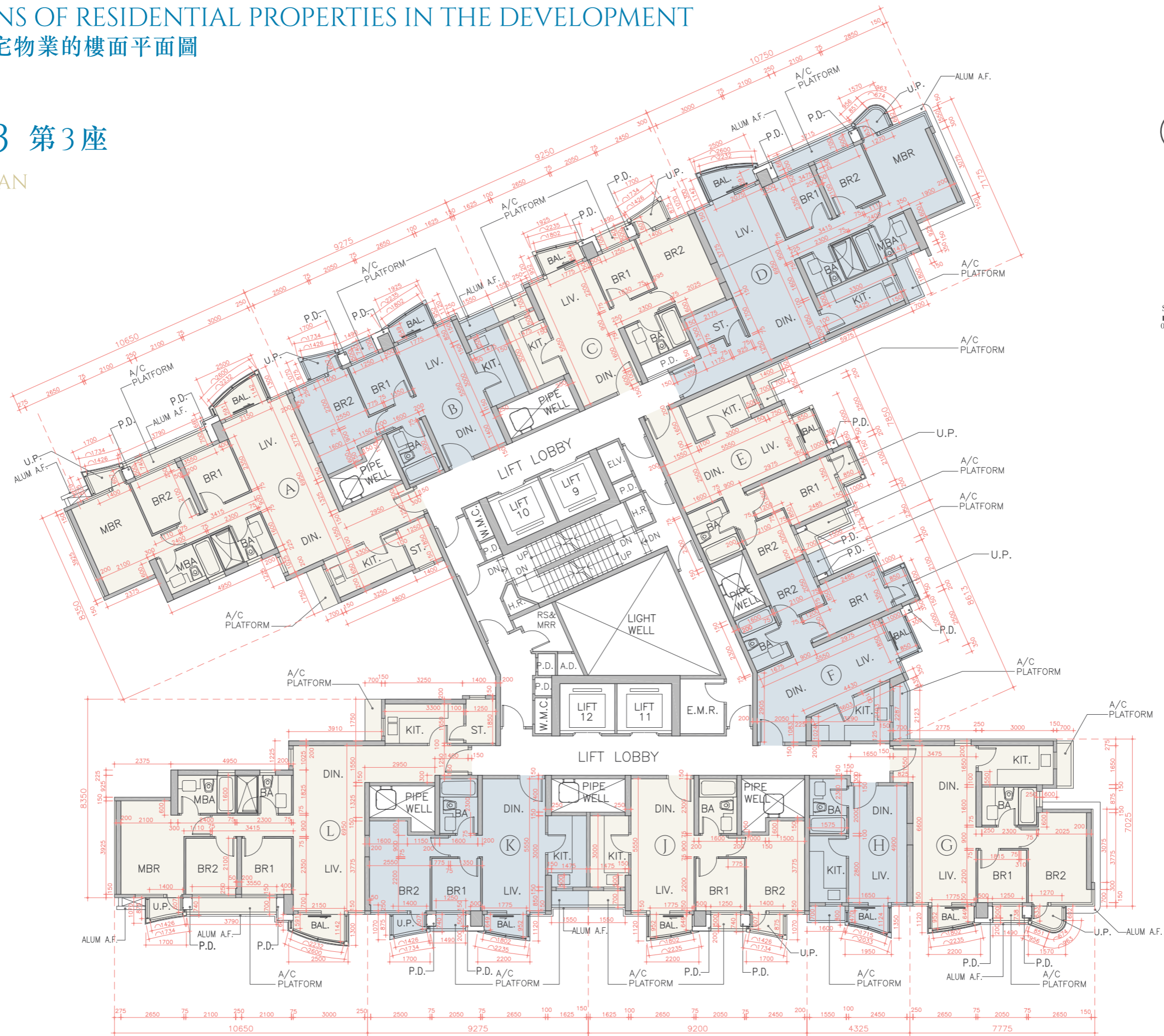


FLOOR PLANS OF RESIDENTIAL PROPERTIES IN THE DEVELOPMENT

發展項目的住宅物業的樓面平面圖

TOWER 3 第3座

20/F FLOOR PLAN 20樓平面圖



FLOOR PLANS OF RESIDENTIAL PROPERTIES IN THE DEVELOPMENT

發展項目的住宅物業的樓面平面圖

TOWER 3 第3座

20/F FLOOR PLAN

20樓平面圖

Description 描述	Floor 樓層	Flat 單位										
		A	B	C	D	E	F	G	H	J	K	L
The thickness of the floor slabs (excluding plaster) of each residential property (mm) 每個住宅物業的樓板 (不包括灰泥) 的厚度 (毫米)		150	150	150	150	150	150	150	150	150	150	150
The floor-to-floor height of each residential property (mm) 每個住宅物業的層與層之間的高度 (毫米)	20/F 20樓	*3338 #2578 #3438 #3613	*3338 #3438 #3613	*3338 #3438 #3613 #3638	*3338 #3438 #3538 #3613 #3638	*3338 #3438 #3538 #3613 #3638	*3338 #3438 #3538 #3613 #3638	*3338 #3438 #3538 #3613 #3638	*3338 #3438 #3613	*3338 #3438 #3638	*3338 #3438 #3613	*3338 #3438 #3613

The internal areas of the residential properties on the upper floors will generally be slightly larger than those on the lower floors because of the reducing thickness of the structural walls on the upper floors.

Please refer to page 16 of this sales brochure for the abbreviations on the floor plans of residential properties.

* Refers to the floor-to-floor height in general within the property between the top surface of the structural slab or sunken slab (if applicable) of a floor and the top surface of the structural slab or sunken slab (if applicable) or flat roof (if applicable) of its immediate upper floor (Inclusive of the thickness of mass concrete fill on sunken slab and transfer plate (if applicable)).

Refers to the range of floor-to-floor heights at various locations within the property between the top surface of the structural slab or sunken slab (if applicable) of a floor and the top surface of the structural slab or sunken slab (if applicable) or flat roof (if applicable) of its immediate upper floor (Inclusive of the thickness of mass concrete fill on sunken slab and transfer plate (if applicable)).

因住宅物業的較高樓層的結構牆的厚度遞減，較高樓層的內部面積，一般比較低樓層的內部面積稍大。

請參閱本售樓說明書第16頁為住宅物業樓面平面圖而設的縮寫。

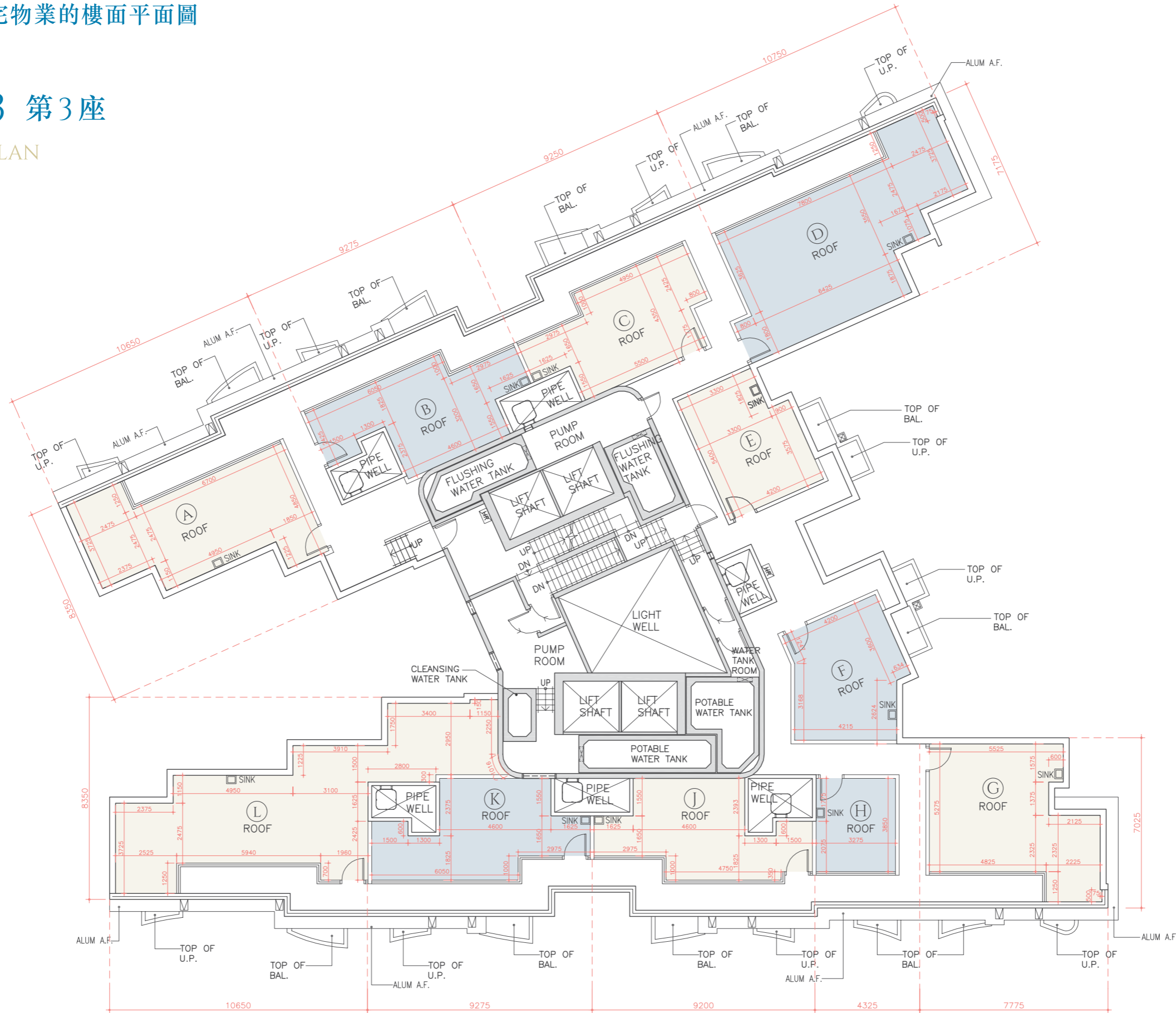
* 指該樓層之石屎地台面或下沉樓板面(如適用)與上一層石屎地台面或下沉樓板面(如適用)或平台面(如適用)在物業內的一般層與層之高度距離(包括下沉樓板面及轉移板上之混凝土填充厚度(如適用))。

指該樓層之石屎地台面或下沉樓板面(如適用)與上一層石屎地台面或下沉樓板面(如適用)或平台面(如適用)在物業內不同位置的層與層之高度距離範圍(包括下沉樓板面及轉移板上之混凝土填充厚度(如適用))。

FLOOR PLANS OF RESIDENTIAL PROPERTIES IN THE DEVELOPMENT
發展項目的住宅物業的樓面平面圖

TOWER 3 第3座

ROOF FLOOR PLAN
天台平面圖



Scale 比例 :
0 1 3 5m (米)

FLOOR PLANS OF RESIDENTIAL PROPERTIES IN THE DEVELOPMENT 發展項目的住宅物業的樓面平面圖

TOWER 3 第3座

ROOF FLOOR PLAN 天台平面圖

The thickness of the floor slabs (excluding plaster) (mm) 樓板 (不包括灰泥) 的厚度 (毫米)	Not Applicable 不適用
The floor-to-floor height (mm) 層與層之間的高度 (毫米)	Not Applicable 不適用

The internal areas of the residential properties on the upper floors will generally be slightly larger than those on the lower floors because of the reducing thickness of the structural walls on the upper floors.
Please refer to page 16 of this sales brochure for the abbreviations on the floor plans of residential properties.

因住宅物業的較高樓層的結構牆的厚度遞減，較高樓層的內部面積，一般比較低樓層的內部面積稍大。
請參閱本售樓說明書第16頁為住宅物業樓面平面圖而設的縮寫。

FLOOR PLANS OF RESIDENTIAL PROPERTIES IN THE DEVELOPMENT

發展項目的住宅物業的樓面平面圖

TOWER 5 第5座

1/F FLOOR PLAN 1樓平面圖



Remarks: The dimensions of floor plans are all structural dimensions in millimetre.
備註：平面圖所列之數字以毫米標示之建築結構尺寸。

FLOOR PLANS OF RESIDENTIAL PROPERTIES IN THE DEVELOPMENT

發展項目的住宅物業的樓面平面圖

TOWER 5 第5座

1/F FLOOR PLAN

1樓平面圖

Description 描述	Flat 單位									
	A	B	C	D	E	F	G	H	J	K
The thickness of the floor slabs (excluding plaster) of each residential property (mm) 每個住宅物業的樓板 (不包括灰泥) 的厚度 (毫米)	150	150	150	150	150	150	150	150	150	150
*The floor-to-floor height of each residential property (mm) *每個住宅物業的層與層之間的高度 (毫米)	3015	3015	3015	3015	3015	3015	3015	3015	3015	3015

The internal areas of the residential properties on the upper floors will generally be slightly larger than those on the lower floors because of the reducing thickness of the structural walls on the upper floors.

Please refer to page 16 of this sales brochure for the abbreviations on the floor plans of residential properties.

* Refers to the floor-to-floor height in general within the property between the top surface of the structural slab or sunken slab (if applicable) of a floor and the top surface of the structural slab or sunken slab (if applicable) or flat roof (if applicable) of its immediate upper floor (Inclusive of the thickness of mass concrete fill on sunken slab and transfer plate (if applicable)).

因住宅物業的較高樓層的結構牆的厚度遞減，較高樓層的內部面積，一般比較低樓層的內部面積稍大。

請參閱本售樓說明書第16頁為住宅物業樓面平面圖而設的縮寫。

* 指該樓層之石屎地台面或下沉樓板面(如適用)與上一層石屎地台面或下沉樓板面(如適用)或平台面(如適用)在物業內的一般層與層之高度距離(包括下沉樓板面及轉移板上之混凝土填充厚度(如適用))。

FLOOR PLANS OF RESIDENTIAL PROPERTIES IN THE DEVELOPMENT

發展項目的住宅物業的樓面平面圖

TOWER 5 第5座

2/F - 3/F & 5/F - 6/F FLOOR PLAN
2樓至3樓及5樓至6樓平面圖



Scale 比例 :
0 1 3 5m(米)



FLOOR PLANS OF RESIDENTIAL PROPERTIES IN THE DEVELOPMENT

發展項目的住宅物業的樓面平面圖

TOWER 5 第5座

2/F - 3/F & 5/F - 6/F FLOOR PLAN

2樓至3樓及5樓至6樓平面圖

Description 描述	Flat 單位									
	A	B	C	D	E	F	G	H	J	K
The thickness of the floor slabs (excluding plaster) of each residential property (mm) 每個住宅物業的樓板 (不包括灰泥) 的厚度 (毫米)	150	150	150	150	150	150	150	150	150	150
*The floor-to-floor height of each residential property (mm) *每個住宅物業的層與層之間的高度 (毫米)	3015	3015	3015	3015	3015	3015	3015	3015	3015	3015

The internal areas of the residential properties on the upper floors will generally be slightly larger than those on the lower floors because of the reducing thickness of the structural walls on the upper floors.

Please refer to page 16 of this sales brochure for the abbreviations on the floor plans of residential properties.

* Refers to the floor-to-floor height in general within the property between the top surface of the structural slab or sunken slab (if applicable) of a floor and the top surface of the structural slab or sunken slab (if applicable) or flat roof (if applicable) of its immediate upper floor (Inclusive of the thickness of mass concrete fill on sunken slab and transfer plate (if applicable)).

因住宅物業的較高樓層的結構牆的厚度遞減，較高樓層的內部面積，一般比較低樓層的內部面積稍大。

請參閱本售樓說明書第16頁為住宅物業樓面平面圖而設的縮寫。

* 指該樓層之石屎地台面或下沉樓板面(如適用)與上一層石屎地台面或下沉樓板面(如適用)或平台面(如適用)在物業內的一般層與層之高度距離(包括下沉樓板面及轉移板上之混凝土填充厚度(如適用))。

FLOOR PLANS OF RESIDENTIAL PROPERTIES IN THE DEVELOPMENT

發展項目的住宅物業的樓面平面圖

TOWER 5 第5座

7/F - 10/F FLOOR PLAN
7樓至10樓平面圖



Scale 比例 :
0 1 3 5m (米)

FLOOR PLANS OF RESIDENTIAL PROPERTIES IN THE DEVELOPMENT

發展項目的住宅物業的樓面平面圖

TOWER 5 第5座

7/F - 10/F FLOOR PLAN

7樓至10樓平面圖

Description 描述	Flat 單位									
	A	B	C	D	E	F	G	H	J	K
The thickness of the floor slabs (excluding plaster) of each residential property (mm) 每個住宅物業的樓板 (不包括灰泥) 的厚度 (毫米)	150	150	150	150	150	150	150	150	150	150
*The floor-to-floor height of each residential property (mm) *每個住宅物業的層與層之間的高度 (毫米)	3015	3015	3015	3015	3015	3015	3015	3015	3015	3015

The internal areas of the residential properties on the upper floors will generally be slightly larger than those on the lower floors because of the reducing thickness of the structural walls on the upper floors.

Please refer to page 16 of this sales brochure for the abbreviations on the floor plans of residential properties.

* Refers to the floor-to-floor height in general within the property between the top surface of the structural slab or sunken slab (if applicable) of a floor and the top surface of the structural slab or sunken slab (if applicable) or flat roof (if applicable) of its immediate upper floor (Inclusive of the thickness of mass concrete fill on sunken slab and transfer plate (if applicable)).

因住宅物業的較高樓層的結構牆的厚度遞減，較高樓層的內部面積，一般比較低樓層的內部面積稍大。

請參閱本售樓說明書第16頁為住宅物業樓面平面圖而設的縮寫。

* 指該樓層之石屎地台面或下沉樓板面(如適用)與上一層石屎地台面或下沉樓板面(如適用)或平台面(如適用)在物業內的一般層與層之高度距離(包括下沉樓板面及轉移板上之混凝土填充厚度(如適用))。

FLOOR PLANS OF RESIDENTIAL PROPERTIES IN THE DEVELOPMENT

發展項目的住宅物業的樓面平面圖

TOWER 5 第5座

11/F - 12/F & 15/F - 16/F FLOOR PLAN
11樓至12樓及15樓至16樓平面圖



Scale 比例 :
0 1 3 5m (米)



FLOOR PLANS OF RESIDENTIAL PROPERTIES IN THE DEVELOPMENT

發展項目的住宅物業的樓面平面圖

TOWER 5 第5座

11/F - 12/F & 15/F - 16/F FLOOR PLAN

11樓至12樓及15樓至16樓平面圖

Description 描述	Flat 單位									
	A	B	C	D	E	F	G	H	J	K
The thickness of the floor slabs (excluding plaster) of each residential property (mm) 每個住宅物業的樓板 (不包括灰泥) 的厚度 (毫米)	150	150	150	150	150	150	150	150	150	150
*The floor-to-floor height of each residential property (mm) *每個住宅物業的層與層之間的高度 (毫米)	3015	3015	3015	3015	3015	3015	3015	3015	3015	3015

The internal areas of the residential properties on the upper floors will generally be slightly larger than those on the lower floors because of the reducing thickness of the structural walls on the upper floors.

Please refer to page 16 of this sales brochure for the abbreviations on the floor plans of residential properties.

* Refers to the floor-to-floor height in general within the property between the top surface of the structural slab or sunken slab (if applicable) of a floor and the top surface of the structural slab or sunken slab (if applicable) or flat roof (if applicable) of its immediate upper floor (Inclusive of the thickness of mass concrete fill on sunken slab and transfer plate (if applicable)).

因住宅物業的較高樓層的結構牆的厚度遞減，較高樓層的內部面積，一般比較低樓層的內部面積稍大。

請參閱本售樓說明書第16頁為住宅物業樓面平面圖而設的縮寫。

* 指該樓層之石屎地台面或下沉樓板面(如適用)與上一層石屎地台面或下沉樓板面(如適用)或平台面(如適用)在物業內的一般層與層之高度距離(包括下沉樓板面及轉移板上之混凝土填充厚度(如適用))。

FLOOR PLANS OF RESIDENTIAL PROPERTIES IN THE DEVELOPMENT

發展項目的住宅物業的樓面平面圖

TOWER 5 第5座

17/F - 19/F FLOOR PLAN
17樓至19樓平面圖



Scale 比例 :
0 1 3 5m (米)



FLOOR PLANS OF RESIDENTIAL PROPERTIES IN THE DEVELOPMENT

發展項目的住宅物業的樓面平面圖

TOWER 5 第5座

17/F - 19/F FLOOR PLAN

17樓至19樓平面圖

Description 描述	Floor 樓層	Flat 單位									
		A	B	C	D	E	F	G	H	J	K
The thickness of the floor slabs (excluding plaster) of each residential property (mm) 每個住宅物業的樓板 (不包括灰泥) 的厚度 (毫米)	17/F - 18/F 17樓至18樓	150	150	150	150	150	150	150	150	150	150
*The floor-to-floor height of each residential property (mm) *每個住宅物業的層與層之間的高度 (毫米)		3015	3015	3015	3015	3015	3015	3015	3015	3015	3015
The thickness of the floor slabs (excluding plaster) of each residential property (mm) 每個住宅物業的樓板 (不包括灰泥) 的厚度 (毫米)	19/F 19樓	150	150	150	150	150	150	150	150	150	150
*The floor-to-floor height of each residential property (mm) *每個住宅物業的層與層之間的高度 (毫米)		3337	3337	3337	3337	3337	3337	3337	3337	3337	3337

The internal areas of the residential properties on the upper floors will generally be slightly larger than those on the lower floors because of the reducing thickness of the structural walls on the upper floors.

Please refer to page 16 of this sales brochure for the abbreviations on the floor plans of residential properties.

* Refers to the floor-to-floor height in general within the property between the top surface of the structural slab or sunken slab (if applicable) of a floor and the top surface of the structural slab or sunken slab (if applicable) or flat roof (if applicable) of its immediate upper floor (Inclusive of the thickness of mass concrete fill on sunken slab and transfer plate (if applicable)).

因住宅物業的較高樓層的結構牆的厚度遞減，較高樓層的內部面積，一般比較低樓層的內部面積稍大。

請參閱本售樓說明書第16頁為住宅物業樓面平面圖而設的縮寫。

* 指該樓層之石屎地台面或下沉樓板面(如適用)與上一層石屎地台面或下沉樓板面(如適用)或平台面(如適用)在物業內的一般層與層之高度距離(包括下沉樓板面及轉移板上之混凝土填充厚度(如適用))。

TOWER 5 第5座

20/F FLOOR PLAN
20樓平面圖



Scale 比例 :
0 1 3 5m (米)

FLOOR PLANS OF RESIDENTIAL PROPERTIES IN THE DEVELOPMENT

發展項目的住宅物業的樓面平面圖

TOWER 5 第5座

20/F FLOOR PLAN

20樓平面圖

Description 描述	Floor 樓層	Flat 單位									
		A	B	C	D	E	F	G	H	J	K
The thickness of the floor slabs (excluding plaster) of each residential property (mm) 每個住宅物業的樓板 (不包括灰泥) 的厚度 (毫米)		150	150	150	150	150	150	150	150	150	150
The floor-to-floor height of each residential property (mm) 每個住宅物業的層與層之間的高度 (毫米)	20/F 20樓	*3338	*3338	*3338	*3338	*3338	*3338	*3338	*3338	*3338	*3338
		#2578	#3438	#3438	#3438	#3438	#3438	#3438	#3438	#3438	#3438
		#3438	#3438	#3438	#3438	#3438	#3438	#3438	#3438	#3438	#3438
		#3613	#3613	#3613	#3613	#3613	#3613	#3613	#3613	#3613	#3613
		#3613	#3638	#3638	#3638	#3638	#3638	#3638	#3638	#3638	#3638

The internal areas of the residential properties on the upper floors will generally be slightly larger than those on the lower floors because of the reducing thickness of the structural walls on the upper floors.

Please refer to page 16 of this sales brochure for the abbreviations on the floor plans of residential properties.

* Refers to the floor-to-floor height in general within the property between the top surface of the structural slab or sunken slab (if applicable) of a floor and the top surface of the structural slab or sunken slab (if applicable) or flat roof (if applicable) of its immediate upper floor (Inclusive of the thickness of mass concrete fill on sunken slab and transfer plate (if applicable)).

Refers to the range of floor-to-floor heights at various locations within the property between the top surface of the structural slab or sunken slab (if applicable) of a floor and the top surface of the structural slab or sunken slab (if applicable) or flat roof (if applicable) of its immediate upper floor (Inclusive of the thickness of mass concrete fill on sunken slab and transfer plate (if applicable)).

因住宅物業的較高樓層的結構牆的厚度遞減，較高樓層的內部面積，一般比較低樓層的內部面積稍大。

請參閱本售樓說明書第16頁為住宅物業樓面平面圖而設的縮寫。

* 指該樓層之石屎地台面或下沉樓板面(如適用)與上一層石屎地台面或下沉樓板面(如適用)或平台面(如適用)在物業內的一般層與層之高度距離(包括下沉樓板面及轉移板上之混凝土填充厚度(如適用))。

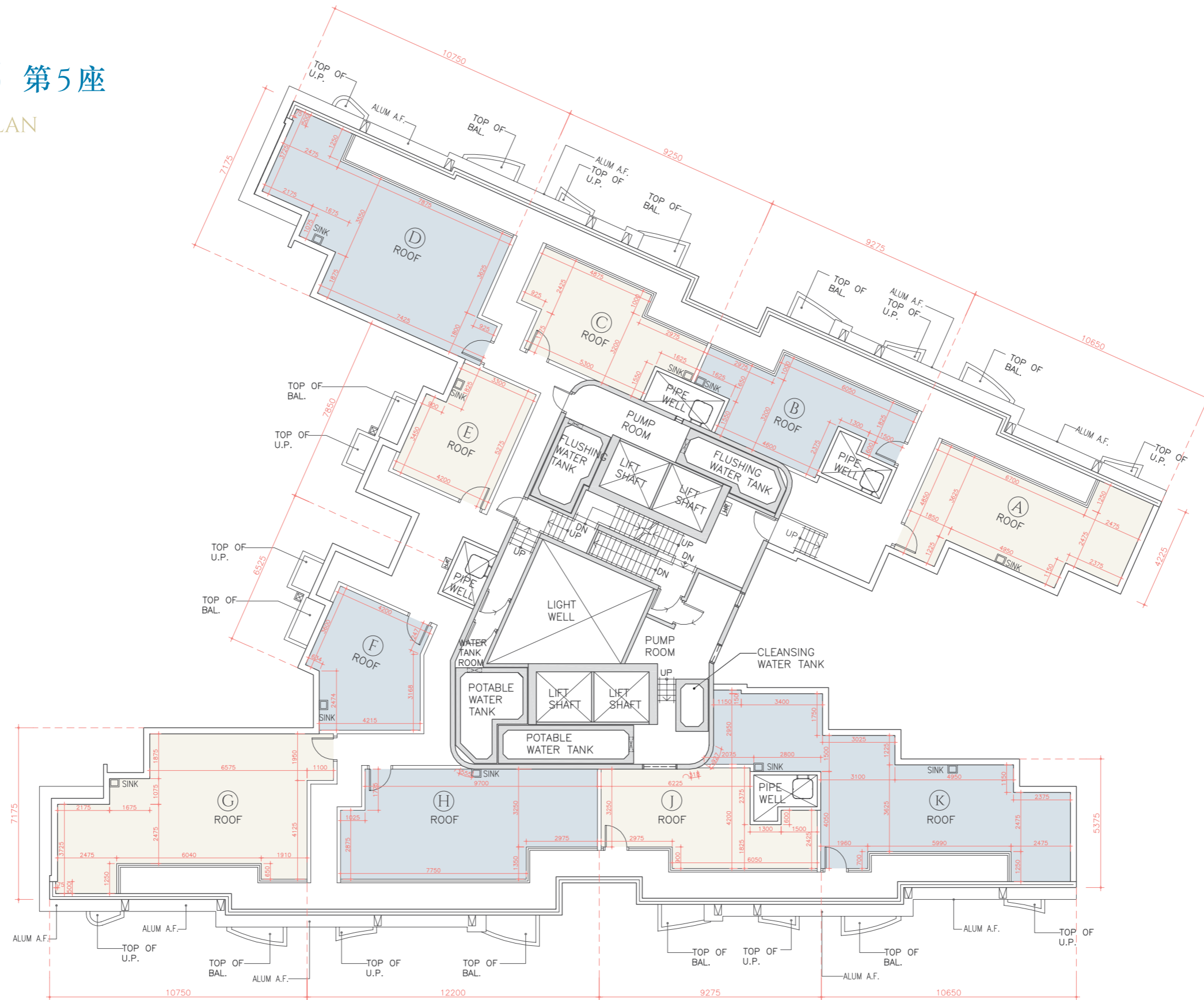
指該樓層之石屎地台面或下沉樓板面(如適用)與上一層石屎地台面或下沉樓板面(如適用)或平台面(如適用)在物業內不同位置的層與層之高度距離範圍(包括下沉樓板面及轉移板上之混凝土填充厚度(如適用))。

FLOOR PLANS OF RESIDENTIAL PROPERTIES IN THE DEVELOPMENT

發展項目的住宅物業的樓面平面圖

TOWER 5 第5座

ROOF FLOOR PLAN 天台平面圖



Scale 比例 :
0 1 3 5m (米)

FLOOR PLANS OF RESIDENTIAL PROPERTIES IN THE DEVELOPMENT

發展項目的住宅物業的樓面平面圖

TOWER 5 第5座

ROOF FLOOR PLAN

天台平面圖

The thickness of the floor slabs (excluding plaster) (mm) 樓板 (不包括灰泥) 的厚度 (毫米)	Not Applicable 不適用
The floor-to-floor height (mm) 層與層之間的高度 (毫米)	Not Applicable 不適用

The internal areas of the residential properties on the upper floors will generally be slightly larger than those on the lower floors because of the reducing thickness of the structural walls on the upper floors.

Please refer to page 16 of this sales brochure for the abbreviations on the floor plans of residential properties.

因住宅物業的較高樓層的結構牆的厚度遞減，較高樓層的內部面積，一般比較低樓層的內部面積稍大。
請參閱本售樓說明書第16頁為住宅物業樓面平面圖而設的縮寫。

FLOOR PLANS OF RESIDENTIAL PROPERTIES IN THE DEVELOPMENT
 發展項目的住宅物業的樓面平面圖

TOWER 6 第6座

1/F FLOOR PLAN
 1樓平面圖



Remarks: The dimensions of floor plans are all structural dimensions in millimetre.
 備註：平面圖所列之數字以毫米標示之建築結構尺寸。

FLOOR PLANS OF RESIDENTIAL PROPERTIES IN THE DEVELOPMENT

發展項目的住宅物業的樓面平面圖

TOWER 6 第6座

1/F FLOOR PLAN

1樓平面圖

Description 描述	Flat 單位									
	A	B	C	D	E	F	G	H	J	K
The thickness of the floor slabs (excluding plaster) of each residential property (mm) 每個住宅物業的樓板 (不包括灰泥) 的厚度 (毫米)	150	150	150	150	150	150	150	150	150	150
*The floor-to-floor height of each residential property (mm) *每個住宅物業的層與層之間的高度 (毫米)	3015	3015	3015	3015	3015	3015	3015	3015	3015	3015

The internal areas of the residential properties on the upper floors will generally be slightly larger than those on the lower floors because of the reducing thickness of the structural walls on the upper floors.

Please refer to page 16 of this sales brochure for the abbreviations on the floor plans of residential properties.

* Refers to the floor-to-floor height in general within the property between the top surface of the structural slab or sunken slab (if applicable) of a floor and the top surface of the structural slab or sunken slab (if applicable) or flat roof (if applicable) of its immediate upper floor (Inclusive of the thickness of mass concrete fill on sunken slab and transfer plate (if applicable)).

因住宅物業的較高樓層的結構牆的厚度遞減，較高樓層的內部面積，一般比較低樓層的內部面積稍大。

請參閱本售樓說明書第16頁為住宅物業樓面平面圖而設的縮寫。

* 指該樓層之石屎地台面或下沉樓板面(如適用)與上一層石屎地台面或下沉樓板面(如適用)或平台面(如適用)在物業內的一般層與層之高度距離(包括下沉樓板面及轉移板上之混凝土填充厚度(如適用))。

FLOOR PLANS OF RESIDENTIAL PROPERTIES IN THE DEVELOPMENT

發展項目的住宅物業的樓面平面圖

TOWER 6 第6座

2/F - 3/F & 5/F - 6/F FLOOR PLAN
2樓至3樓及5樓至6樓平面圖



FLOOR PLANS OF RESIDENTIAL PROPERTIES IN THE DEVELOPMENT

發展項目的住宅物業的樓面平面圖

TOWER 6 第6座

2/F - 3/F & 5/F - 6/F FLOOR PLAN

2樓至3樓及5樓至6樓平面圖

Description 描述	Flat 單位									
	A	B	C	D	E	F	G	H	J	K
The thickness of the floor slabs (excluding plaster) of each residential property (mm) 每個住宅物業的樓板 (不包括灰泥) 的厚度 (毫米)	150	150	150	150	150	150	150	150	150	150
*The floor-to-floor height of each residential property (mm) *每個住宅物業的層與層之間的高度 (毫米)	3015	3015	3015	3015	3015	3015	3015	3015	3015	3015

The internal areas of the residential properties on the upper floors will generally be slightly larger than those on the lower floors because of the reducing thickness of the structural walls on the upper floors.

Please refer to page 16 of this sales brochure for the abbreviations on the floor plans of residential properties.

* Refers to the floor-to-floor height in general within the property between the top surface of the structural slab or sunken slab (if applicable) of a floor and the top surface of the structural slab or sunken slab (if applicable) or flat roof (if applicable) of its immediate upper floor (Inclusive of the thickness of mass concrete fill on sunken slab and transfer plate (if applicable)).

因住宅物業的較高樓層的結構牆的厚度遞減，較高樓層的內部面積，一般比較低樓層的內部面積稍大。

請參閱本售樓說明書第16頁為住宅物業樓面平面圖而設的縮寫。

* 指該樓層之石屎地台面或下沉樓板面(如適用)與上一層石屎地台面或下沉樓板面(如適用)或平台面(如適用)在物業內的一般層與層之高度距離(包括下沉樓板面及轉移板上之混凝土填充厚度(如適用))。

FLOOR PLANS OF RESIDENTIAL PROPERTIES IN THE DEVELOPMENT

發展項目的住宅物業的樓面平面圖

TOWER 6 第6座

7/F - 10/F FLOOR PLAN
7樓至10樓平面圖



FLOOR PLANS OF RESIDENTIAL PROPERTIES IN THE DEVELOPMENT

發展項目的住宅物業的樓面平面圖

TOWER 6 第6座

7/F - 10/F FLOOR PLAN

7樓至10樓平面圖

Description 描述	Flat 單位									
	A	B	C	D	E	F	G	H	J	K
The thickness of the floor slabs (excluding plaster) of each residential property (mm) 每個住宅物業的樓板 (不包括灰泥) 的厚度 (毫米)	150	150	150	150	150	150	150	150	150	150
*The floor-to-floor height of each residential property (mm) *每個住宅物業的層與層之間的高度 (毫米)	3015	3015	3015	3015	3015	3015	3015	3015	3015	3015

The internal areas of the residential properties on the upper floors will generally be slightly larger than those on the lower floors because of the reducing thickness of the structural walls on the upper floors.

Please refer to page 16 of this sales brochure for the abbreviations on the floor plans of residential properties.

* Refers to the floor-to-floor height in general within the property between the top surface of the structural slab or sunken slab (if applicable) of a floor and the top surface of the structural slab or sunken slab (if applicable) or flat roof (if applicable) of its immediate upper floor (Inclusive of the thickness of mass concrete fill on sunken slab and transfer plate (if applicable)).

因住宅物業的較高樓層的結構牆的厚度遞減，較高樓層的內部面積，一般比較低樓層的內部面積稍大。

請參閱本售樓說明書第16頁為住宅物業樓面平面圖而設的縮寫。

* 指該樓層之石屎地台面或下沉樓板面(如適用)與上一層石屎地台面或下沉樓板面(如適用)或平台面(如適用)在物業內的一般層與層之高度距離(包括下沉樓板面及轉移板上之混凝土填充厚度(如適用))。

FLOOR PLANS OF RESIDENTIAL PROPERTIES IN THE DEVELOPMENT

發展項目的住宅物業的樓面平面圖

TOWER 6 第6座

11/F - 12/F & 15/F - 16/F FLOOR PLAN
11樓至12樓及15樓至16樓平面圖



FLOOR PLANS OF RESIDENTIAL PROPERTIES IN THE DEVELOPMENT

發展項目的住宅物業的樓面平面圖

TOWER 6 第6座

11/F - 12/F & 15/F - 16/F FLOOR PLAN

11樓至12樓及15樓至16樓平面圖

Description 描述	Flat 單位									
	A	B	C	D	E	F	G	H	J	K
The thickness of the floor slabs (excluding plaster) of each residential property (mm) 每個住宅物業的樓板 (不包括灰泥) 的厚度 (毫米)	150	150	150	150	150	150	150	150	150	150
*The floor-to-floor height of each residential property (mm) *每個住宅物業的層與層之間的高度 (毫米)	3015	3015	3015	3015	3015	3015	3015	3015	3015	3015

The internal areas of the residential properties on the upper floors will generally be slightly larger than those on the lower floors because of the reducing thickness of the structural walls on the upper floors.

Please refer to page 16 of this sales brochure for the abbreviations on the floor plans of residential properties.

* Refers to the floor-to-floor height in general within the property between the top surface of the structural slab or sunken slab (if applicable) of a floor and the top surface of the structural slab or sunken slab (if applicable) or flat roof (if applicable) of its immediate upper floor (Inclusive of the thickness of mass concrete fill on sunken slab and transfer plate (if applicable)).

因住宅物業的較高樓層的結構牆的厚度遞減，較高樓層的內部面積，一般比較低樓層的內部面積稍大。

請參閱本售樓說明書第16頁為住宅物業樓面平面圖而設的縮寫。

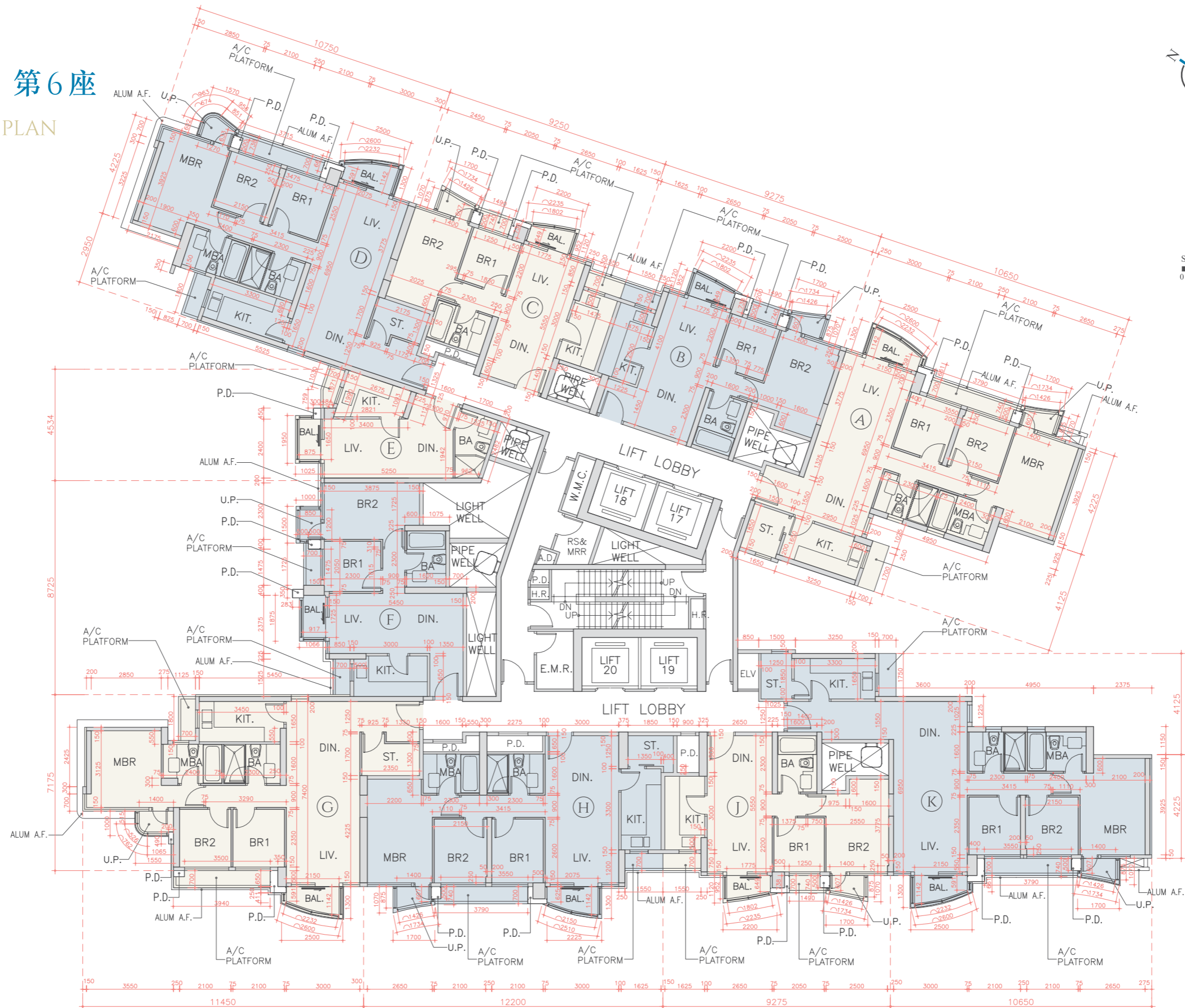
* 指該樓層之石屎地台面或下沉樓板面(如適用)與上一層石屎地台面或下沉樓板面(如適用)或平台面(如適用)在物業內的一般層與層之高度距離(包括下沉樓板面及轉移板上之混凝土填充厚度(如適用))。

FLOOR PLANS OF RESIDENTIAL PROPERTIES IN THE DEVELOPMENT

發展項目的住宅物業的樓面平面圖

TOWER 6 第6座

17/F - 19/F FLOOR PLAN
17樓至19樓平面圖



FLOOR PLANS OF RESIDENTIAL PROPERTIES IN THE DEVELOPMENT

發展項目的住宅物業的樓面平面圖

TOWER 6 第6座

17/F - 19/F FLOOR PLAN

17樓至19樓平面圖

Description 描述	Floor 樓層	Flat 單位									
		A	B	C	D	E	F	G	H	J	K
The thickness of the floor slabs (excluding plaster) of each residential property (mm) 每個住宅物業的樓板 (不包括灰泥) 的厚度 (毫米)	17/F - 18/F 17樓至18樓	150	150	150	150	150	150	150	150	150	150
*The floor-to-floor height of each residential property (mm) *每個住宅物業的層與層之間的高度 (毫米)		3015	3015	3015	3015	3015	3015	3015	3015	3015	3015
The thickness of the floor slabs (excluding plaster) of each residential property (mm) 每個住宅物業的樓板 (不包括灰泥) 的厚度 (毫米)	19/F 19樓	150	150	150	150	150	150	150	150	150	150
*The floor-to-floor height of each residential property (mm) *每個住宅物業的層與層之間的高度 (毫米)		3337	3337	3337	3337	3337	3337	3337	3337	3337	3337

The internal areas of the residential properties on the upper floors will generally be slightly larger than those on the lower floors because of the reducing thickness of the structural walls on the upper floors.

Please refer to page 16 of this sales brochure for the abbreviations on the floor plans of residential properties.

* Refers to the floor-to-floor height in general within the property between the top surface of the structural slab or sunken slab (if applicable) of a floor and the top surface of the structural slab or sunken slab (if applicable) or flat roof (if applicable) of its immediate upper floor (Inclusive of the thickness of mass concrete fill on sunken slab and transfer plate (if applicable)).

因住宅物業的較高樓層的結構牆的厚度遞減，較高樓層的內部面積，一般比較低樓層的內部面積稍大。

請參閱本售樓說明書第16頁為住宅物業樓面平面圖而設的縮寫。

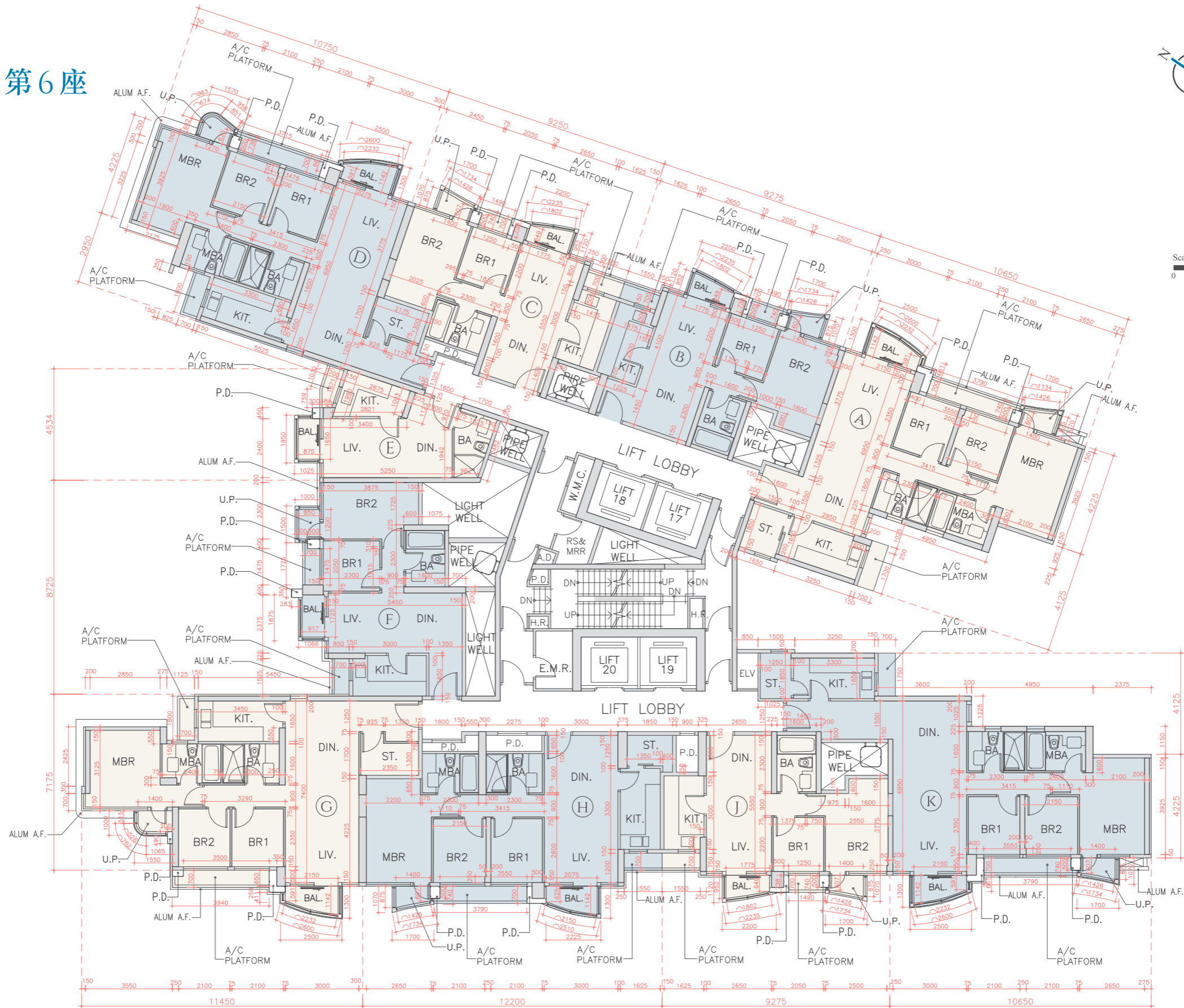
* 指該樓層之石屎地台面或下沉樓板面(如適用)與上一層石屎地台面或下沉樓板面(如適用)或平台面(如適用)在物業內的一般層與層之高度距離(包括下沉樓板面及轉移板上之混凝土填充厚度(如適用))。

FLOOR PLANS OF RESIDENTIAL PROPERTIES IN THE DEVELOPMENT

發展項目的住宅物業的樓面平面圖

TOWER 6 第6座

20/F FLOOR PLAN 20樓平面圖



FLOOR PLANS OF RESIDENTIAL PROPERTIES IN THE DEVELOPMENT

發展項目的住宅物業的樓面平面圖

TOWER 6 第6座

20/F FLOOR PLAN

20樓平面圖

Description 描述	Floor 樓層	Flat 單位									
		A	B	C	D	E	F	G	H	J	K
The thickness of the floor slabs (excluding plaster) of each residential property (mm) 每個住宅物業的樓板 (不包括灰泥) 的厚度 (毫米)		150	150	150	150	150	150	150	150	150	150
The floor-to-floor height of each residential property (mm) 每個住宅物業的層與層之間的高度 (毫米)	20/F 20樓	*3338 #3438 #3613	*3338 #3438 #3613	*3338 #3438 #3613	*3338 #3438 #3538 #3613 #3638	*3338 #3638	*3338 #3438 #3613 #3638	*3338 #3438 #3538 #3613 #3638	*3338 #3438 #3613	*3338 #3438 #3613	*3338 #3438 #3613

The internal areas of the residential properties on the upper floors will generally be slightly larger than those on the lower floors because of the reducing thickness of the structural walls on the upper floors.

Please refer to page 16 of this sales brochure for the abbreviations on the floor plans of residential properties.

* Refers to the floor-to-floor height in general within the property between the top surface of the structural slab or sunken slab (if applicable) of a floor and the top surface of the structural slab or sunken slab (if applicable) or flat roof (if applicable) of its immediate upper floor (Inclusive of the thickness of mass concrete fill on sunken slab and transfer plate (if applicable)).

Refers to the range of floor-to-floor heights at various locations within the property between the top surface of the structural slab or sunken slab (if applicable) of a floor and the top surface of the structural slab or sunken slab (if applicable) or flat roof (if applicable) of its immediate upper floor (Inclusive of the thickness of mass concrete fill on sunken slab and transfer plate (if applicable)).

因住宅物業的較高樓層的結構牆的厚度遞減，較高樓層的內部面積，一般比較低樓層的內部面積稍大。

請參閱本售樓說明書第16頁為住宅物業樓面平面圖而設的縮寫。

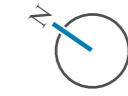
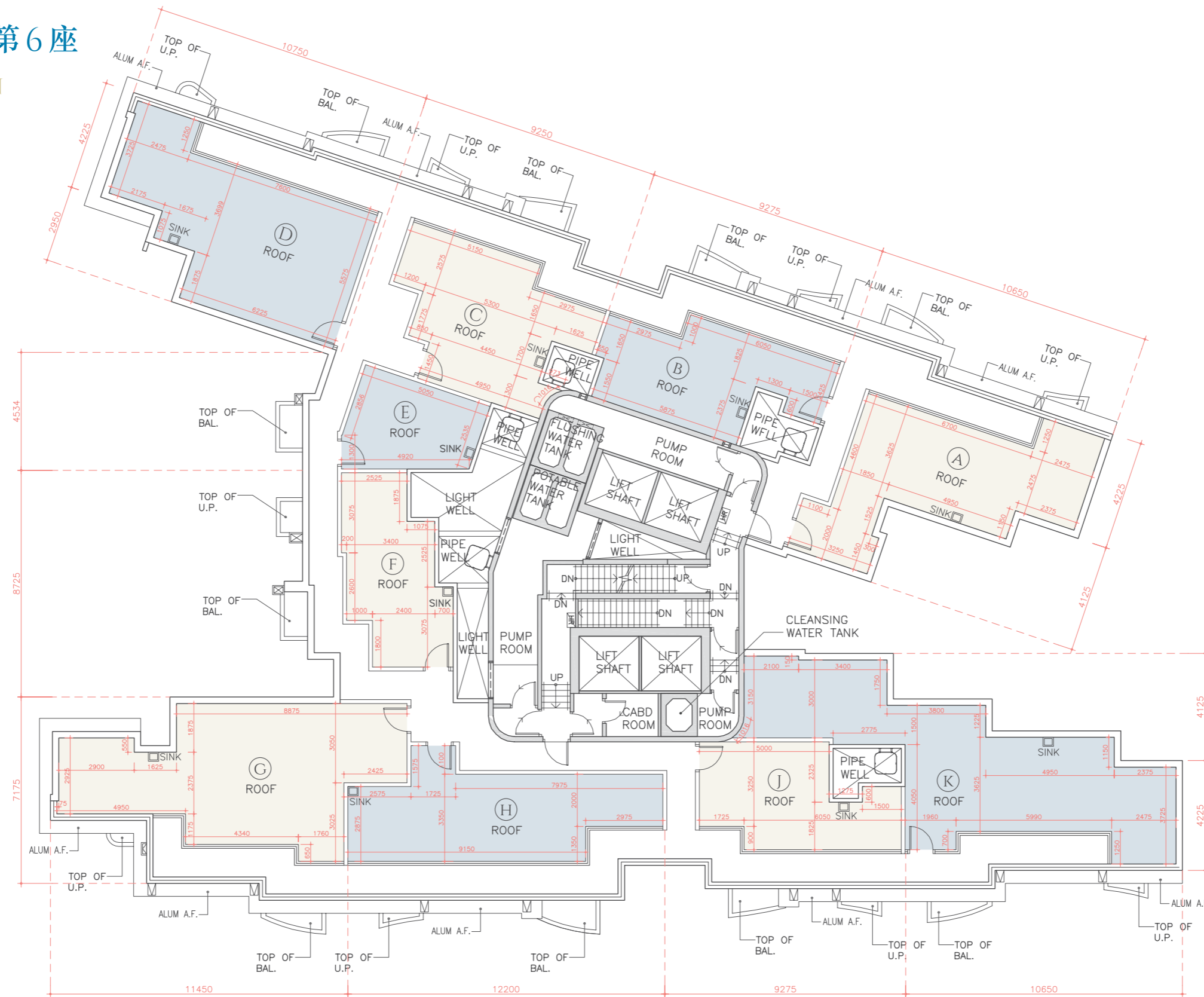
* 指該樓層之石屎地台面或下沉樓板面(如適用)與上一層石屎地台面或下沉樓板面(如適用)或平台面(如適用)在物業內的一般層與層之高度距離(包括下沉樓板面及轉移板上之混凝土填充厚度(如適用))。

指該樓層之石屎地台面或下沉樓板面(如適用)與上一層石屎地台面或下沉樓板面(如適用)或平台面(如適用)在物業內不同位置的層與層之高度距離範圍(包括下沉樓板面及轉移板上之混凝土填充厚度(如適用))。

FLOOR PLANS OF RESIDENTIAL PROPERTIES IN THE DEVELOPMENT
 發展項目的住宅物業的樓面平面圖

TOWER 6 第6座

ROOF FLOOR PLAN
 天台平面圖



Scale 比例 :
 0 1 3 5m (米)

FLOOR PLANS OF RESIDENTIAL PROPERTIES IN THE DEVELOPMENT 發展項目的住宅物業的樓面平面圖

TOWER 6 第6座

ROOF FLOOR PLAN 天台平面圖

The thickness of the floor slabs (excluding plaster) (mm) 樓板 (不包括灰泥) 的厚度 (毫米)	Not Applicable 不適用
The floor-to-floor height (mm) 層與層之間的高度 (毫米)	Not Applicable 不適用

The internal areas of the residential properties on the upper floors will generally be slightly larger than those on the lower floors because of the reducing thickness of the structural walls on the upper floors.
Please refer to page 16 of this sales brochure for the abbreviations on the floor plans of residential properties.

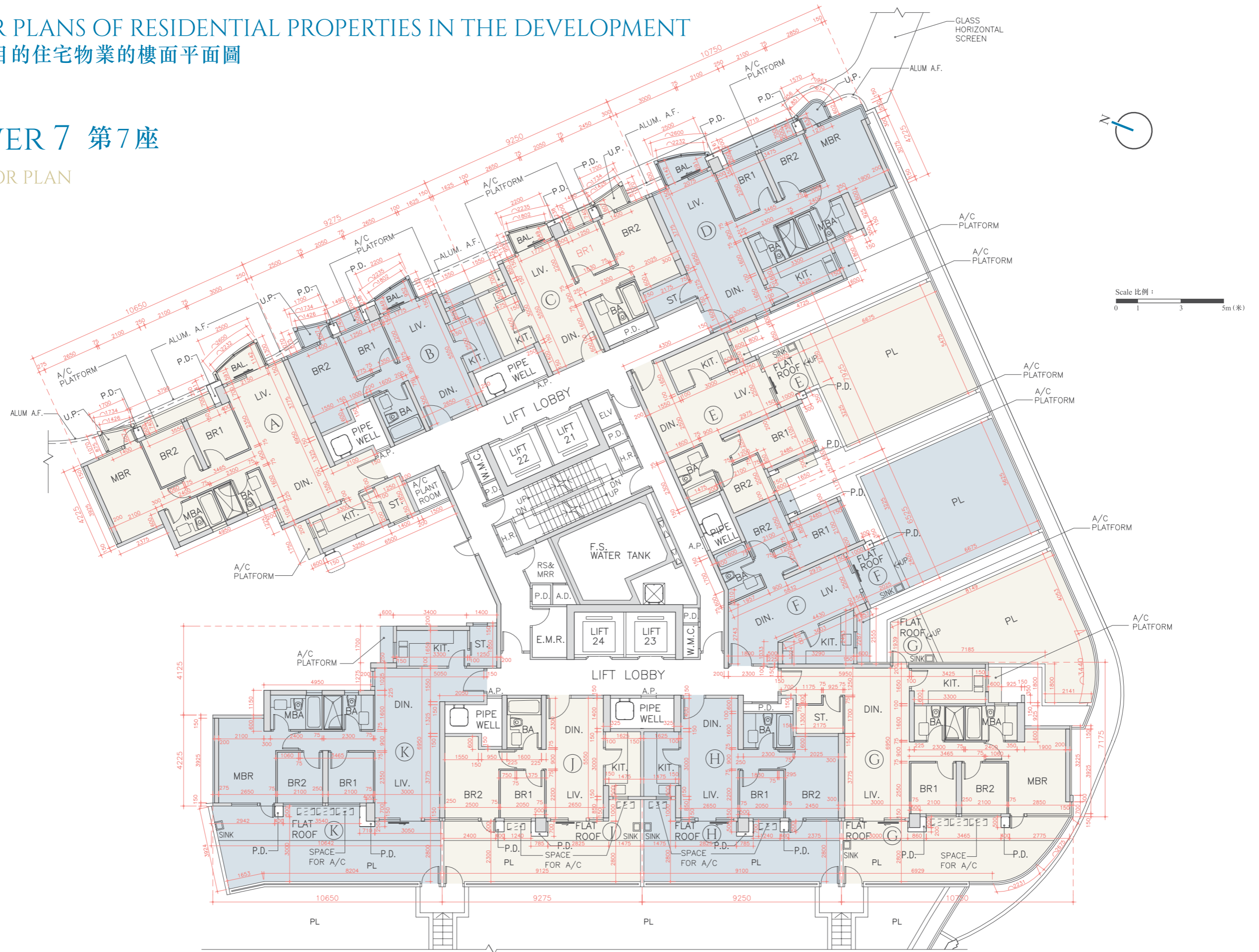
因住宅物業的較高樓層的結構牆的厚度遞減，較高樓層的內部面積，一般比較低樓層的內部面積稍大。
請參閱本售樓說明書第16頁為住宅物業樓面平面圖而設的縮寫。

FLOOR PLANS OF RESIDENTIAL PROPERTIES IN THE DEVELOPMENT

發展項目的住宅物業的樓面平面圖

TOWER 7 第7座

1/F FLOOR PLAN 1樓平面圖



FLOOR PLANS OF RESIDENTIAL PROPERTIES IN THE DEVELOPMENT

發展項目的住宅物業的樓面平面圖

TOWER 7 第7座

1/F FLOOR PLAN

1樓平面圖

Description 描述	Flat 單位									
	A	B	C	D	E	F	G	H	J	K
The thickness of the floor slabs (excluding plaster) of each residential property (mm) 每個住宅物業的樓板 (不包括灰泥) 的厚度 (毫米)	150	150	150	150	150	150	150	150	150	150
*The floor-to-floor height of each residential property (mm) *每個住宅物業的層與層之間的高度 (毫米)	3015	3015	3015	3015	3015	3015	3015	3015	3015	3015

The internal areas of the residential properties on the upper floors will generally be slightly larger than those on the lower floors because of the reducing thickness of the structural walls on the upper floors.

Please refer to page 16 of this sales brochure for the abbreviations on the floor plans of residential properties.

* Refers to the floor-to-floor height in general within the property between the top surface of the structural slab or sunken slab (if applicable) of a floor and the top surface of the structural slab or sunken slab (if applicable) or flat roof (if applicable) of its immediate upper floor (Inclusive of the thickness of mass concrete fill on sunken slab and transfer plate (if applicable)).

因住宅物業的較高樓層的結構牆的厚度遞減，較高樓層的內部面積，一般比較低樓層的內部面積稍大。

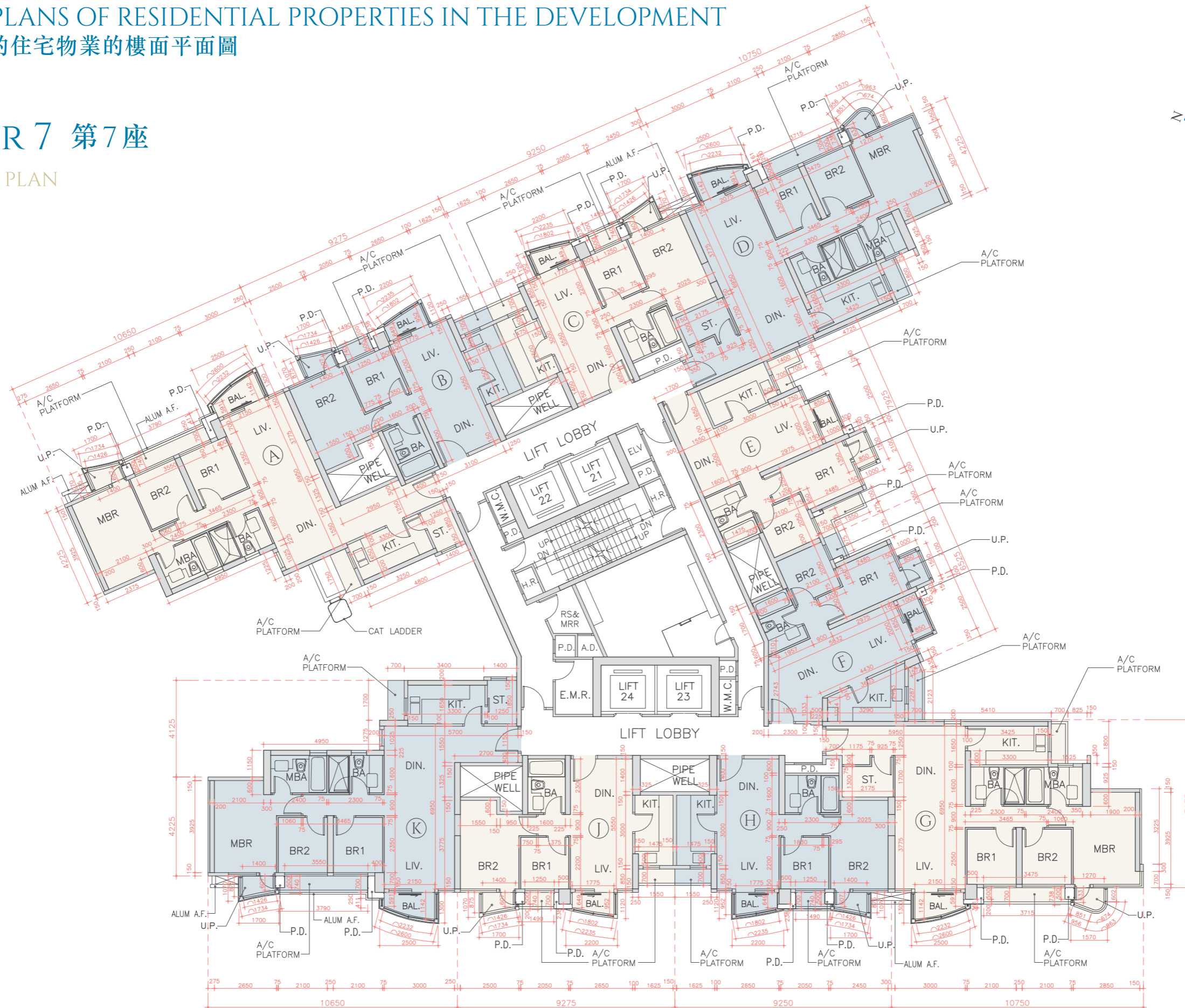
請參閱本售樓說明書第16頁為住宅物業樓面平面圖而設的縮寫。

* 指該樓層之石屎地台面或下沉樓板面(如適用)與上一層石屎地台面或下沉樓板面(如適用)或平台面(如適用)在物業內的一般層與層之高度距離(包括下沉樓板面及轉移板上之混凝土填充厚度(如適用))。

FLOOR PLANS OF RESIDENTIAL PROPERTIES IN THE DEVELOPMENT
發展項目的住宅物業的樓面平面圖

TOWER 7 第7座

2/F FLOOR PLAN
2樓平面圖



Scale 比例 :
0 1 3 5m (米)

FLOOR PLANS OF RESIDENTIAL PROPERTIES IN THE DEVELOPMENT

發展項目的住宅物業的樓面平面圖

TOWER 7 第7座

2/F FLOOR PLAN

2樓平面圖

Description 描述	Flat 單位									
	A	B	C	D	E	F	G	H	J	K
The thickness of the floor slabs (excluding plaster) of each residential property (mm) 每個住宅物業的樓板 (不包括灰泥) 的厚度 (毫米)	150	150	150	150	150	150	150	150	150	150
*The floor-to-floor height of each residential property (mm) *每個住宅物業的層與層之間的高度 (毫米)	3015	3015	3015	3015	3015	3015	3015	3015	3015	3015

The internal areas of the residential properties on the upper floors will generally be slightly larger than those on the lower floors because of the reducing thickness of the structural walls on the upper floors.

Please refer to page 16 of this sales brochure for the abbreviations on the floor plans of residential properties.

* Refers to the floor-to-floor height in general within the property between the top surface of the structural slab or sunken slab (if applicable) of a floor and the top surface of the structural slab or sunken slab (if applicable) or flat roof (if applicable) of its immediate upper floor (Inclusive of the thickness of mass concrete fill on sunken slab and transfer plate (if applicable)).

因住宅物業的較高樓層的結構牆的厚度遞減，較高樓層的內部面積，一般比較低樓層的內部面積稍大。

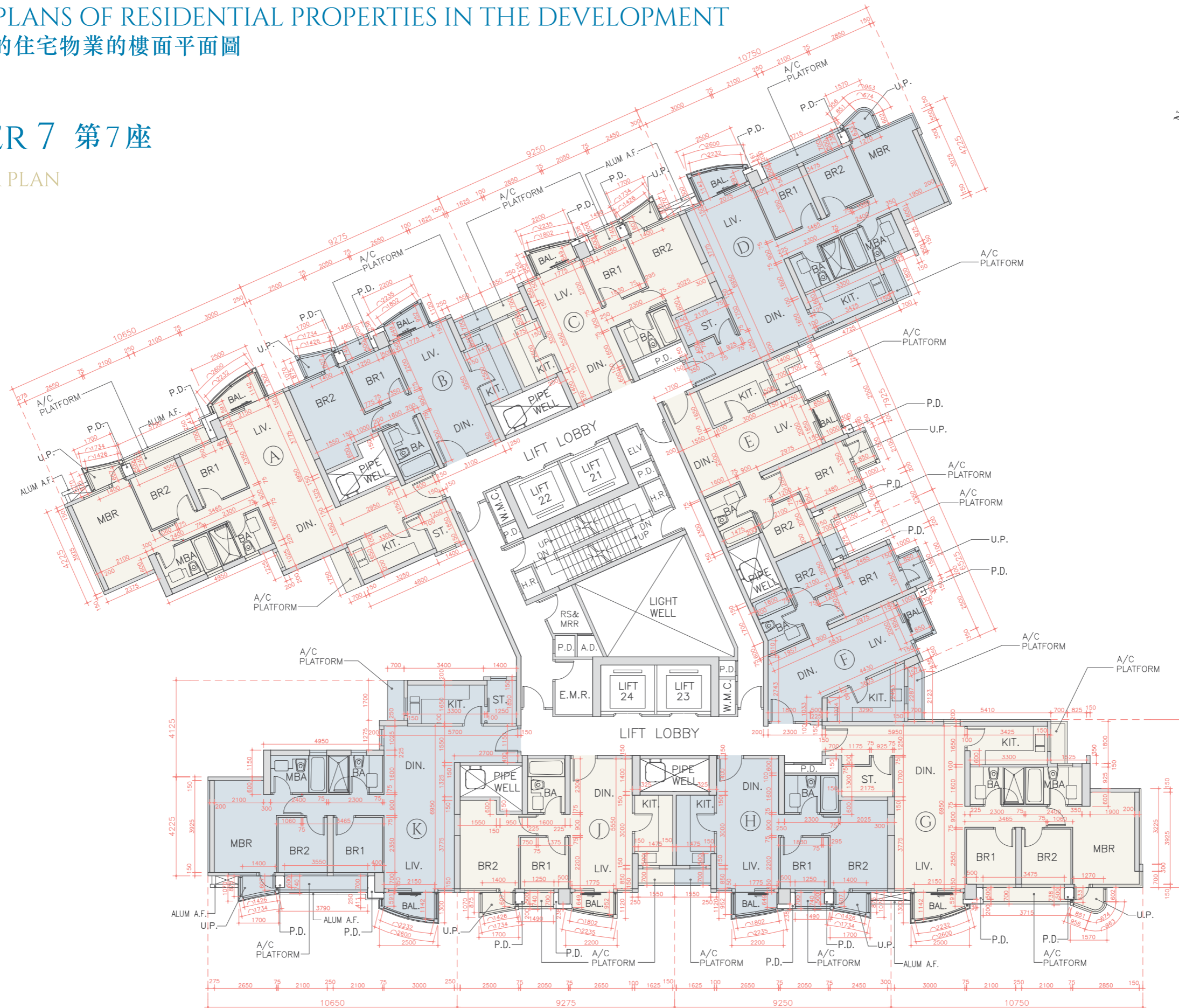
請參閱本售樓說明書第16頁為住宅物業樓面平面圖而設的縮寫。

* 指該樓層之石屎地台面或下沉樓板面(如適用)與上一層石屎地台面或下沉樓板面(如適用)或平台面(如適用)在物業內的一般層與層之高度距離(包括下沉樓板面及轉移板上之混凝土填充厚度(如適用))。

FLOOR PLANS OF RESIDENTIAL PROPERTIES IN THE DEVELOPMENT
發展項目的住宅物業的樓面平面圖

TOWER 7 第7座

3/F FLOOR PLAN
3樓平面圖



FLOOR PLANS OF RESIDENTIAL PROPERTIES IN THE DEVELOPMENT

發展項目的住宅物業的樓面平面圖

TOWER 7 第7座

3/F FLOOR PLAN

3樓平面圖

Description 描述	Flat 單位									
	A	B	C	D	E	F	G	H	J	K
The thickness of the floor slabs (excluding plaster) of each residential property (mm) 每個住宅物業的樓板 (不包括灰泥) 的厚度 (毫米)	150	150	150	150	150	150	150	150	150	150
*The floor-to-floor height of each residential property (mm) *每個住宅物業的層與層之間的高度 (毫米)	3015	3015	3015	3015	3015	3015	3015	3015	3015	3015

The internal areas of the residential properties on the upper floors will generally be slightly larger than those on the lower floors because of the reducing thickness of the structural walls on the upper floors.

Please refer to page 16 of this sales brochure for the abbreviations on the floor plans of residential properties.

* Refers to the floor-to-floor height in general within the property between the top surface of the structural slab or sunken slab (if applicable) of a floor and the top surface of the structural slab or sunken slab (if applicable) or flat roof (if applicable) of its immediate upper floor (Inclusive of the thickness of mass concrete fill on sunken slab and transfer plate (if applicable)).

因住宅物業的較高樓層的結構牆的厚度遞減，較高樓層的內部面積，一般比較低樓層的內部面積稍大。

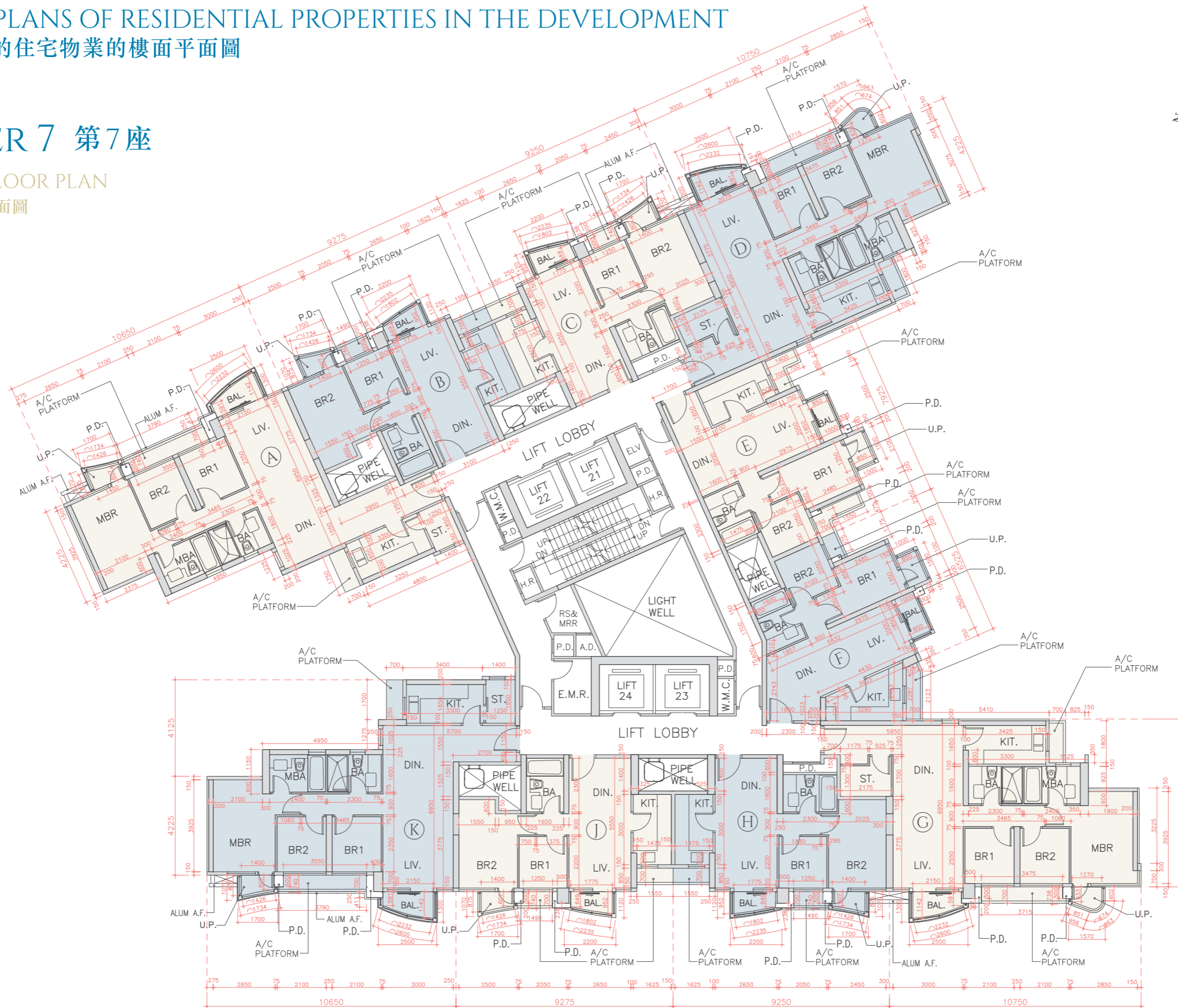
請參閱本售樓說明書第16頁為住宅物業樓面平面圖而設的縮寫。

* 指該樓層之石屎地台面或下沉樓板面(如適用)與上一層石屎地台面或下沉樓板面(如適用)或平台面(如適用)在物業內的一般層與層之高度距離(包括下沉樓板面及轉移板上之混凝土填充厚度(如適用))。

FLOOR PLANS OF RESIDENTIAL PROPERTIES IN THE DEVELOPMENT
發展項目的住宅物業的樓面平面圖

TOWER 7 第7座

5/F - 6/F FLOOR PLAN
5樓至6樓平面圖



FLOOR PLANS OF RESIDENTIAL PROPERTIES IN THE DEVELOPMENT

發展項目的住宅物業的樓面平面圖

TOWER 7 第7座

5/F - 6/F FLOOR PLAN

5樓至6樓平面圖

Description 描述	Flat 單位									
	A	B	C	D	E	F	G	H	J	K
The thickness of the floor slabs (excluding plaster) of each residential property (mm) 每個住宅物業的樓板 (不包括灰泥) 的厚度 (毫米)	150	150	150	150	150	150	150	150	150	150
*The floor-to-floor height of each residential property (mm) *每個住宅物業的層與層之間的高度 (毫米)	3015	3015	3015	3015	3015	3015	3015	3015	3015	3015

The internal areas of the residential properties on the upper floors will generally be slightly larger than those on the lower floors because of the reducing thickness of the structural walls on the upper floors.

Please refer to page 16 of this sales brochure for the abbreviations on the floor plans of residential properties.

* Refers to the floor-to-floor height in general within the property between the top surface of the structural slab or sunken slab (if applicable) of a floor and the top surface of the structural slab or sunken slab (if applicable) or flat roof (if applicable) of its immediate upper floor (Inclusive of the thickness of mass concrete fill on sunken slab and transfer plate (if applicable)).

因住宅物業的較高樓層的結構牆的厚度遞減，較高樓層的內部面積，一般比較低樓層的內部面積稍大。

請參閱本售樓說明書第16頁為住宅物業樓面平面圖而設的縮寫。

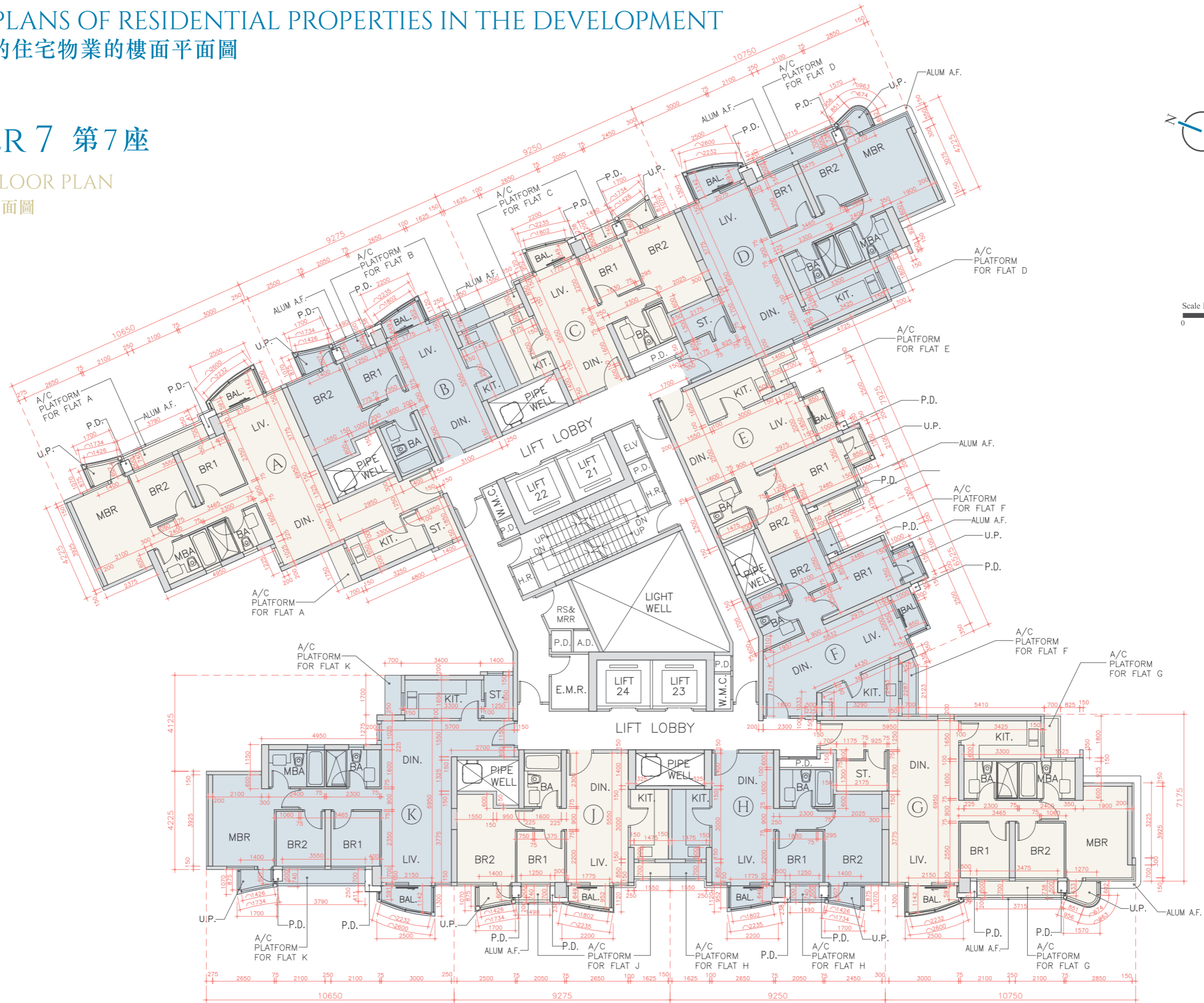
* 指該樓層之石屎地台面或下沉樓板面(如適用)與上一層石屎地台面或下沉樓板面(如適用)或平台面(如適用)在物業內的一般層與層之高度距離(包括下沉樓板面及轉移板上之混凝土填充厚度(如適用))。

FLOOR PLANS OF RESIDENTIAL PROPERTIES IN THE DEVELOPMENT

發展項目的住宅物業的樓面平面圖

TOWER 7 第7座

7/F - 10/F FLOOR PLAN
7樓至10樓平面圖



Scale 比例 :
0 1 3 5m (米)

FLOOR PLANS OF RESIDENTIAL PROPERTIES IN THE DEVELOPMENT

發展項目的住宅物業的樓面平面圖

TOWER 7 第7座

7/F - 10/F FLOOR PLAN

7樓至10樓平面圖

Description 描述	Flat 單位									
	A	B	C	D	E	F	G	H	J	K
The thickness of the floor slabs (excluding plaster) of each residential property (mm) 每個住宅物業的樓板 (不包括灰泥) 的厚度 (毫米)	150	150	150	150	150	150	150	150	150	150
*The floor-to-floor height of each residential property (mm) *每個住宅物業的層與層之間的高度 (毫米)	3015	3015	3015	3015	3015	3015	3015	3015	3015	3015

The internal areas of the residential properties on the upper floors will generally be slightly larger than those on the lower floors because of the reducing thickness of the structural walls on the upper floors.

Please refer to page 16 of this sales brochure for the abbreviations on the floor plans of residential properties.

* Refers to the floor-to-floor height in general within the property between the top surface of the structural slab or sunken slab (if applicable) of a floor and the top surface of the structural slab or sunken slab (if applicable) or flat roof (if applicable) of its immediate upper floor (Inclusive of the thickness of mass concrete fill on sunken slab and transfer plate (if applicable)).

因住宅物業的較高樓層的結構牆的厚度遞減，較高樓層的內部面積，一般比較低樓層的內部面積稍大。

請參閱本售樓說明書第16頁為住宅物業樓面平面圖而設的縮寫。

* 指該樓層之石屎地台面或下沉樓板面(如適用)與上一層石屎地台面或下沉樓板面(如適用)或平台面(如適用)在物業內的一般層與層之高度距離(包括下沉樓板面及轉移板上之混凝土填充厚度(如適用))。