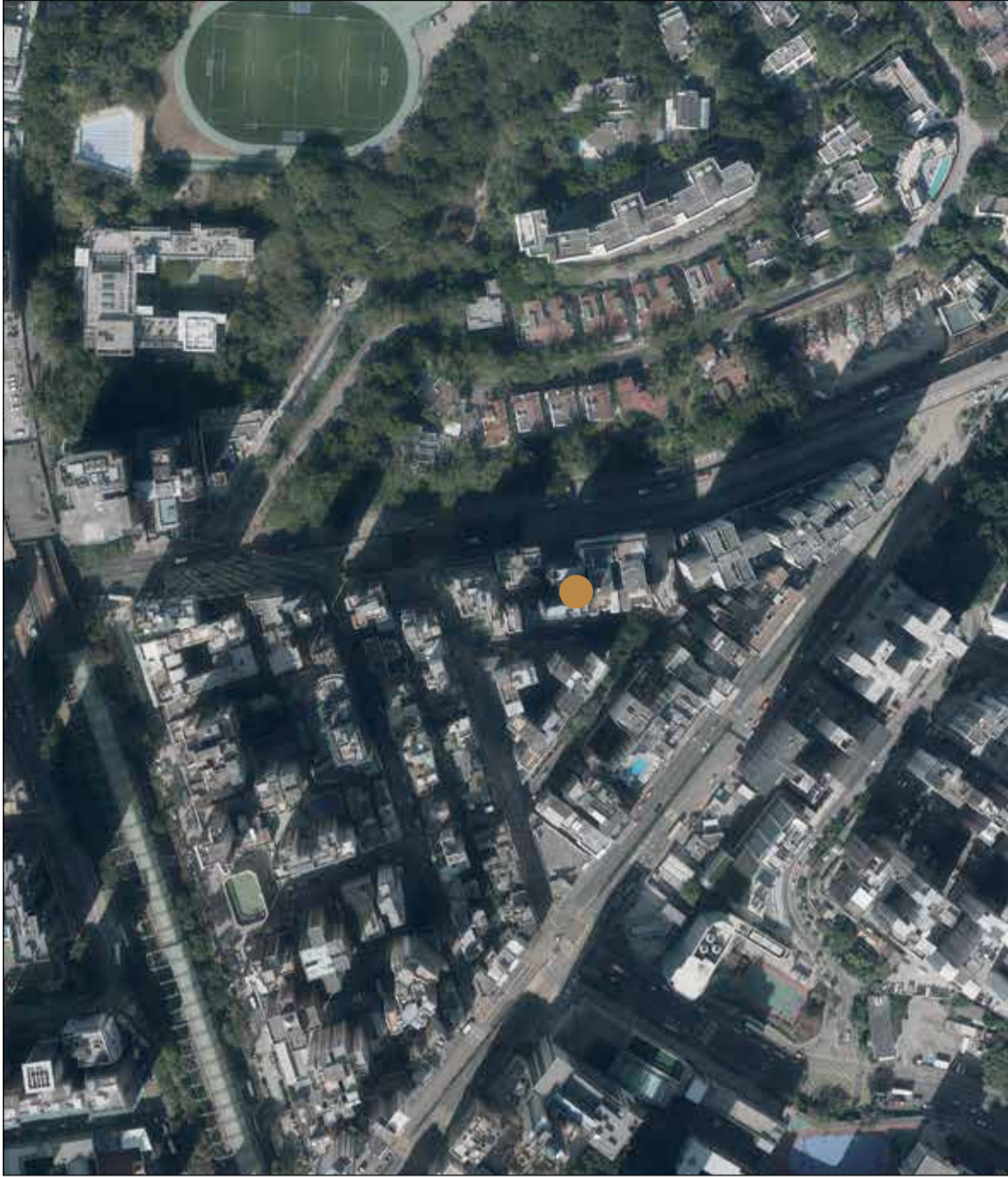


7 發展項目的鳥瞰照片 AERIAL PHOTOGRAPH OF THE DEVELOPMENT



This blank area falls outside the coverage of the Aerial Photograph

此空白範圍不為本鳥瞰照片所覆蓋



摘錄自地政總署測繪處於2017年12月27日在6,000呎飛行高度拍攝之鳥瞰照片，編號為E030855C。

香港特別行政區政府地政總署測繪處©版權所有，未經許可，不得複製。

附註：
由於發展項目的邊界不規則的技術原因，上圖可能顯示多於《一手住宅物業銷售條例》所要求顯示的範圍。

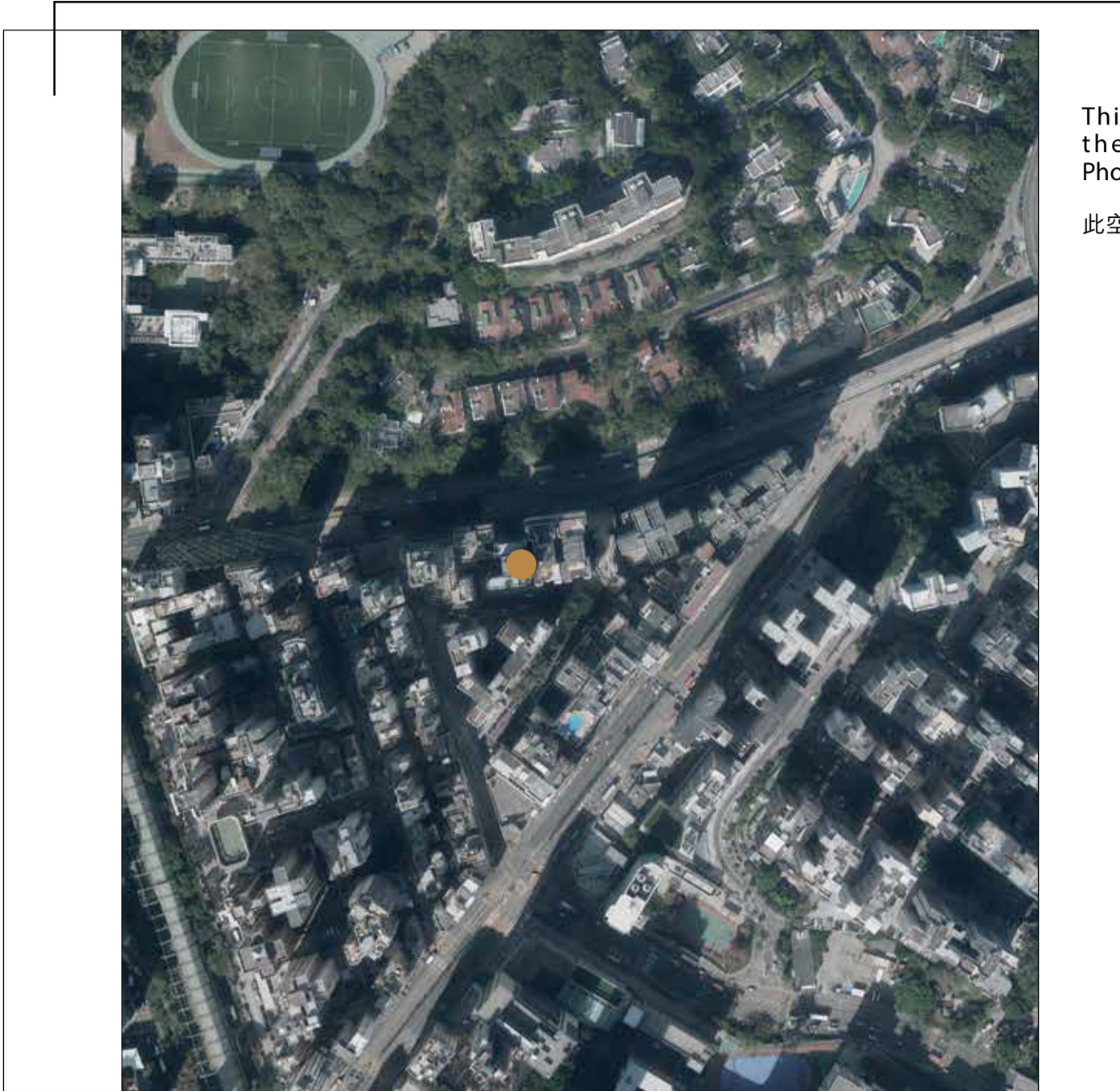
Adopted from part of the aerial photograph taken by the Survey and Mapping Office of the Lands Department at a flying height of 6,000 feet, photo no. E030855C, dated 27 December 2017.

Survey and Mapping Office, Lands Department, The Government of HKSAR © Copyright reserved - reproduction by permission only.

Note:
The aerial photograph may show more than the area required under the Residential Properties (First-hand Sales) Ordinance due to the technical reason that the boundary of the Development is irregular.

7

發展項目的鳥瞰照片 AERIAL PHOTOGRAPH OF THE DEVELOPMENT



This blank area falls outside the coverage of the Aerial Photograph

此空白範圍不為本鳥瞰照片所覆蓋



摘錄自地政總署測繪處於2017年12月27日在6,000呎飛行高度拍攝之鳥瞰照片，編號為E030856C。

香港特別行政區政府地政總署測繪處©版權所有，未經許可，不得複製。

附註：
由於發展項目的邊界不規則的技術原因，上圖可能顯示多於《一手住宅物業銷售條例》所要求顯示的範圍。

Adopted from part of the aerial photograph taken by the Survey and Mapping Office of the Lands Department at a flying height of 6,000 feet, photo no. E030856C, dated 27 December 2017.

Survey and Mapping Office, Lands Department, The Government of HKSAR © Copyright reserved - reproduction by permission only.

Note:
The aerial photograph may show more than the area required under the Residential Properties (First-hand Sales) Ordinance due to the technical reason that the boundary of the Development is irregular.

7

發展項目的鳥瞰照片
AERIAL PHOTOGRAPH OF THE DEVELOPMENT

This blank area falls outside
the coverage of the Aerial
Photograph

此空白範圍不為本鳥瞰照片所覆蓋



摘錄自地政總署測繪處於2018年12月17日在6,900呎飛行高度拍攝之鳥瞰照片，編號為E051659C。

香港特別行政區政府地政總署測繪處©版權所有，未經許可，不得複製。

附註：
由於發展項目的邊界不規則的技術原因，上圖可能顯示多於《一手住宅物業銷售條例》所要求顯示的範圍。

Adopted from part of the aerial photograph taken by the Survey and Mapping Office of the Lands Department at a flying height of 6,900 feet, photo no. E051659C, dated 17 December 2018.

Survey and Mapping Office, Lands Department, The Government of HKSAR © Copyright reserved - reproduction by permission only.

Note:
The aerial photograph may show more than the area required under the Residential Properties (First-hand Sales) Ordinance due to the technical reason that the boundary of the Development is irregular.

7

發展項目的鳥瞰照片 AERIAL PHOTOGRAPH OF THE DEVELOPMENT

This blank area falls outside
the coverage of the Aerial
Photograph

此空白範圍不為本鳥瞰照片所覆蓋



摘錄自地政總署測繪處於2018年12月17日在6,900呎飛行高度拍攝之鳥瞰照片，編號為E051740C。

香港特別行政區政府地政總署測繪處©版權所有，未經許可，不得複製。

附註：
由於發展項目的邊界不規則的技術原因，上圖可能顯示多於《一手住宅物業銷售條例》所要求顯示的範圍。

Adopted from part of the aerial photograph taken by the Survey and Mapping Office of the Lands Department at a flying height of 6,900 feet, photo no. E051740C, dated 17 December 2018.

Survey and Mapping Office, Lands Department, The Government of HKSAR © Copyright reserved - reproduction by permission only.

Note :
The aerial photograph may show more than the area required under the Residential Properties (First-hand Sales) Ordinance due to the technical reason that the boundary of the Development is irregular.