

FLOOR PLANS OF RESIDENTIAL PROPERTIES IN THE DEVELOPMENT

發展項目的住宅物業的樓面平面圖

FLOOR PLANS OF RESIDENTIAL PROPERTIES IN THE DEVELOPMENT

發展項目的住宅物業的樓面平面圖

Legend of Terms and Abbreviations used on Floor Plans:

樓面平面圖中所使用名詞及簡稱之圖例：

A/C PLATFORM = AIR-CONDITIONING PLATFORM = 冷氣機平台
A/C PLATFORM ABOVE = AIR-CONDITIONING PLATFORM ABOVE = 冷氣機平台置上
ARCHITECTURAL FEATURE = 建築裝飾
ARCHITECTURAL FEATURE ABOVE = 建築裝飾置上
BAL. = BALCONY = 露台
BAL. ABOVE = BALCONY ABOVE = 露台置上
BATH = BATHROOM = 浴室
BATH 2 = BATHROOM 2 = 浴室 2
B.R. 1 = BEDROOM 1 = 睡房 1
B.R. 2 = BEDROOM 2 = 睡房 2
B.R. 3 = BEDROOM 3 = 睡房 3
B.W. = BAY WINDOW = 窗台
BUILDING LINE ABOVE = 建築線置上
BUILDING ABOVE = 建築物置上
CANOPY = 簷蓬
CLEANSING WATER TANK & PUMP ROOM = 清洗水缸及泵房
COMMON AREA = 公共地方
COMMON FLAT ROOF = 共用平台
DIN. = DINING ROOM = 飯廳

DN = DOWN = 落
DOG HOUSE = 管道房
DRAINAGE RESERVE — DESIGNATED AS COMMON AREA UNDER DMC (WITH 200MM HEIGHT CONCRETE PLINTH) = 排水渠保留空間 — 按公契被劃入公共範圍 (設有200毫米高混凝土底座)
E.M.R. = ELECTRICAL METER ROOM = 電錶房
EAVE = 屋簷
EAVE ABOVE = 屋簷置上
FILTRATION PLANT ROOM LOWER PART OF SWIMMING POOL FOR 36/F UNIT A, C = 於36樓A, C單位之游泳池底部之濾水機房
FLAT ROOF = 平台
FLUSHING WATER TANK = 沖廁水缸
F.S. WATER TANK = FIRE SERVICES WATER TANK = 消防水缸
H.R. = HOSE REEL = 消防喉轆
KIT. = KITCHEN = 廚房
LAVATORY = 洗手間
LIFT = 升降機
LIFT LOBBY = 升降機大堂
LIFT SHAFT = 升降機槽
LIV. = LIVING ROOM = 客廳

M.B.R. = MASTER BEDROOM = 主人睡房
M.BATH = MASTER BATHROOM = 主人浴室
P.D. = PIPE DUCT = 管槽
PLANTER = 花槽
POTABLE AND FLUSHING WATER PUMP ROOM = 食水及咸水水泵房
POWDER ROOM = 化妝間
ROOF = 天台
ROOF OF FLATS A, C, E AND F = 於A, C, E及F單位之天台
R.S. & M.R.R. = REFUSE STORAGE AND MATERIAL RECOVERY ROOM = 垃圾及物料回收室
STORE = 儲物室
STORE 2 = 儲物室2
SKYLIGHT = 天窗
SWIMMING POOL = 游泳池
U.P. = UTILITY PLATFORM = 工作平台
U.P. ABOVE = UTILITY PLATFORM ABOVE = 工作平台置上
UP = 上
W.M.C. = WATER METER CABINET = 水錶櫃

Explanatory Notes:

1. Symbols of fittings and fixtures shown on the floor plans, such as shower compartment, bath tub, floor drain, water closet, shower, sink and sink counter, stove etc, are architectural symbols retrieved from the latest approved general building plans and for general indication only.
2. There may be architectural features and exposed pipes, pipe covers on external walls.
3. There are dish channels and surface channels at flat roof and roof.
4. Some residential units have ceiling bulkheads and sunken slabs of the residential units on the above floor installed in the living/dining room, bedrooms, kitchen, store room, and/or corridor to conceal the air-conditioning system and/or mechanical and electrical services in the residential unit.
5. The internal ceiling height within some units may vary due to structural, architectural and/or decoration design variations.
6. There may be common pipes and/or mechanical and electrical services within the air conditioning platform, balconies, utility platforms and roofs of some residential units.
7. Balconies and utility platforms are non-enclosed areas.

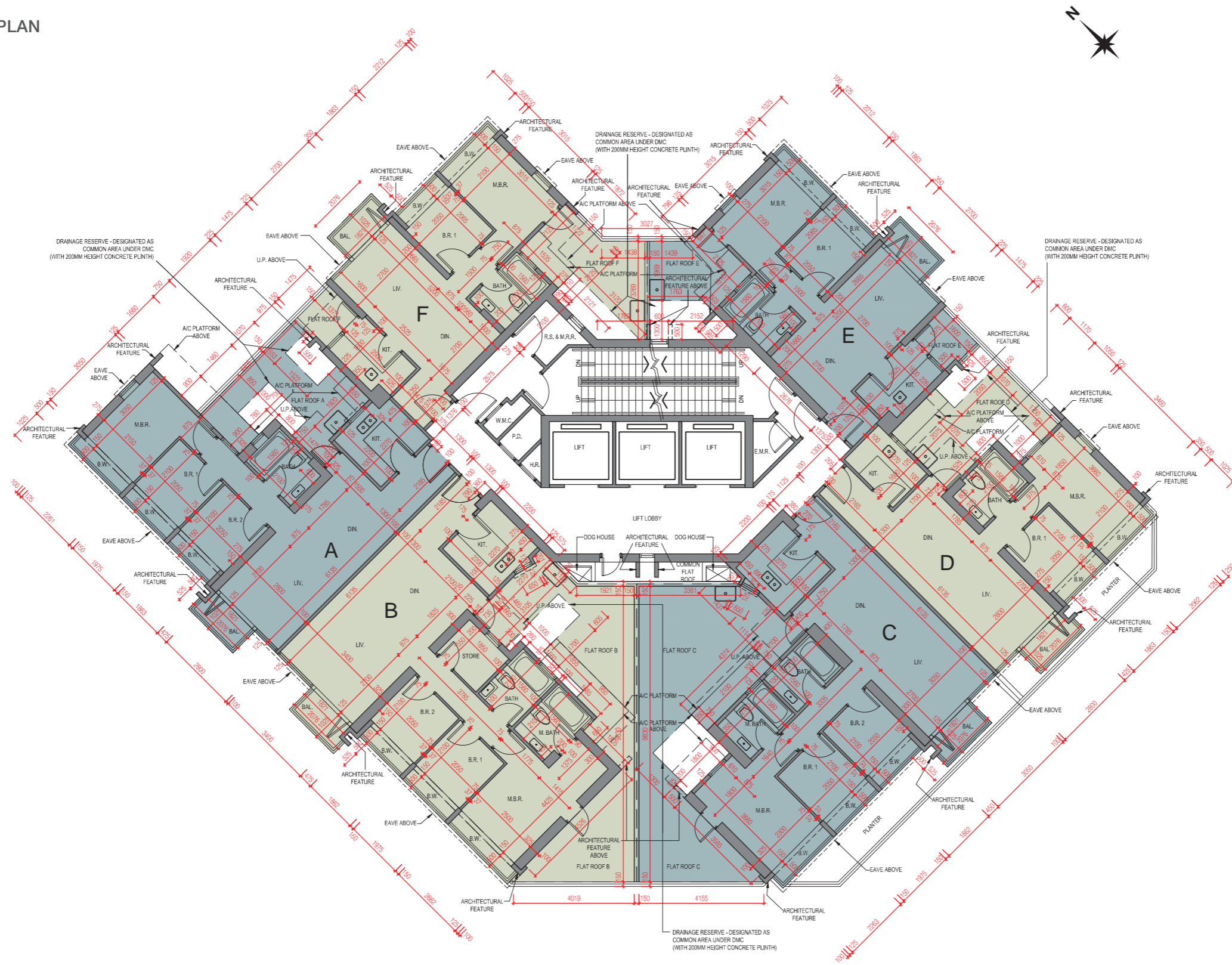
備註：

1. 樓面平面圖上所顯示的形象裝置符號，例如淋浴間、浴缸、地台去水、坐廁、花灑、洗手盤、洗手盤櫃、煮食爐等乃摘自最新的經批准的建築圖則，只作一般性標誌。
2. 外牆或設有建築裝飾及外露喉管道、喉管蓋。
3. 平台及天台設有碟型渠及去水渠。
4. 部份住宅單位之客廳/飯廳、睡房、廚房、儲物室及/或走廊或設有假天花及上層單位跌級樓板，用以隱藏裝設在住宅單位內的冷氣及/或其他機電設備。
5. 部份單位之天花高度將會因結構、建築設計及/或裝修設計上的需要而有差異。
6. 部份住宅單位之冷氣機平台、露台、工作平台及天台內或裝有公用喉管及/或其他機電設備。
7. 露台及工作平台為不可封閉的地方。

FLOOR PLANS OF RESIDENTIAL PROPERTIES IN THE DEVELOPMENT

發展項目的住宅物業的樓面平面圖

Tower 1 5/F FLOOR PLAN
第1座 5樓 平面圖



Scale 比例: 0M(米) 5M(米)

Note: The dimensions in the floor plan are all structural dimensions in millimeter.
備註：樓面平面圖之尺規所列數字為以毫米標示之建築結構尺寸。

FLOOR PLANS OF RESIDENTIAL PROPERTIES IN THE DEVELOPMENT

發展項目的住宅物業的樓面平面圖

Tower 1 5/F FLOOR PLAN
第1座 5樓 平面圖

| Each of the Residential Property 每個住宅物業 | Tower 座數 | Floor 樓層 | Unit 單位 | | | | | |
|--|----------------|-------------|------------|------|------|------|------|------|
| | | | A | B | C | D | E | F |
| Thickness of the floor slabs (excluding plaster)(mm) 樓板（不包括灰泥）的厚度（毫米） | Tower 1 第1座 | 5/F 5樓 | 150 | 150 | 150 | 150 | 150 | 150 |
| Floor-to-floor height (mm) 層與層之間的高度（毫米） | | | 3325 | 3325 | 3325 | 3325 | 3325 | 3325 |

Notes:

1. The internal areas of the residential properties on the upper floors will generally be slightly larger than those on the lower floors because of the reducing thickness of the structural walls on the upper floors.
2. Please refer to page 19 of this Sales Brochure for legend of the terms and abbreviations used on the floor plan above and the explanatory notes that are applicable thereto.

備註：

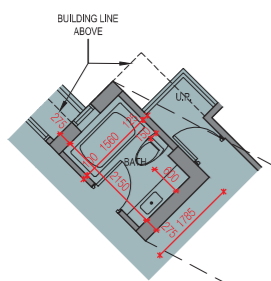
1. 因住宅物業的較高樓層的結構牆的厚度遞減，較高樓層的內部面積，一般比較低樓層的內部面積稍大。
2. 樓面平面圖中所使用名詞及簡稱之圖例及其適用的備註，請參閱本售樓說明書第19頁。

FLOOR PLANS OF RESIDENTIAL PROPERTIES IN THE DEVELOPMENT

發展項目的住宅物業的樓面平面圖

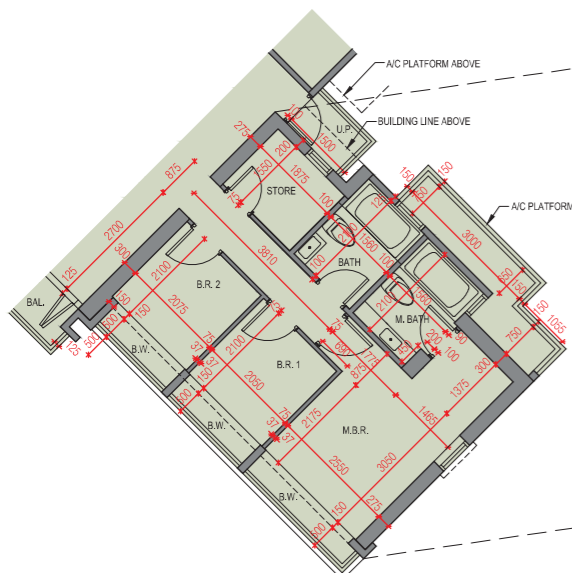
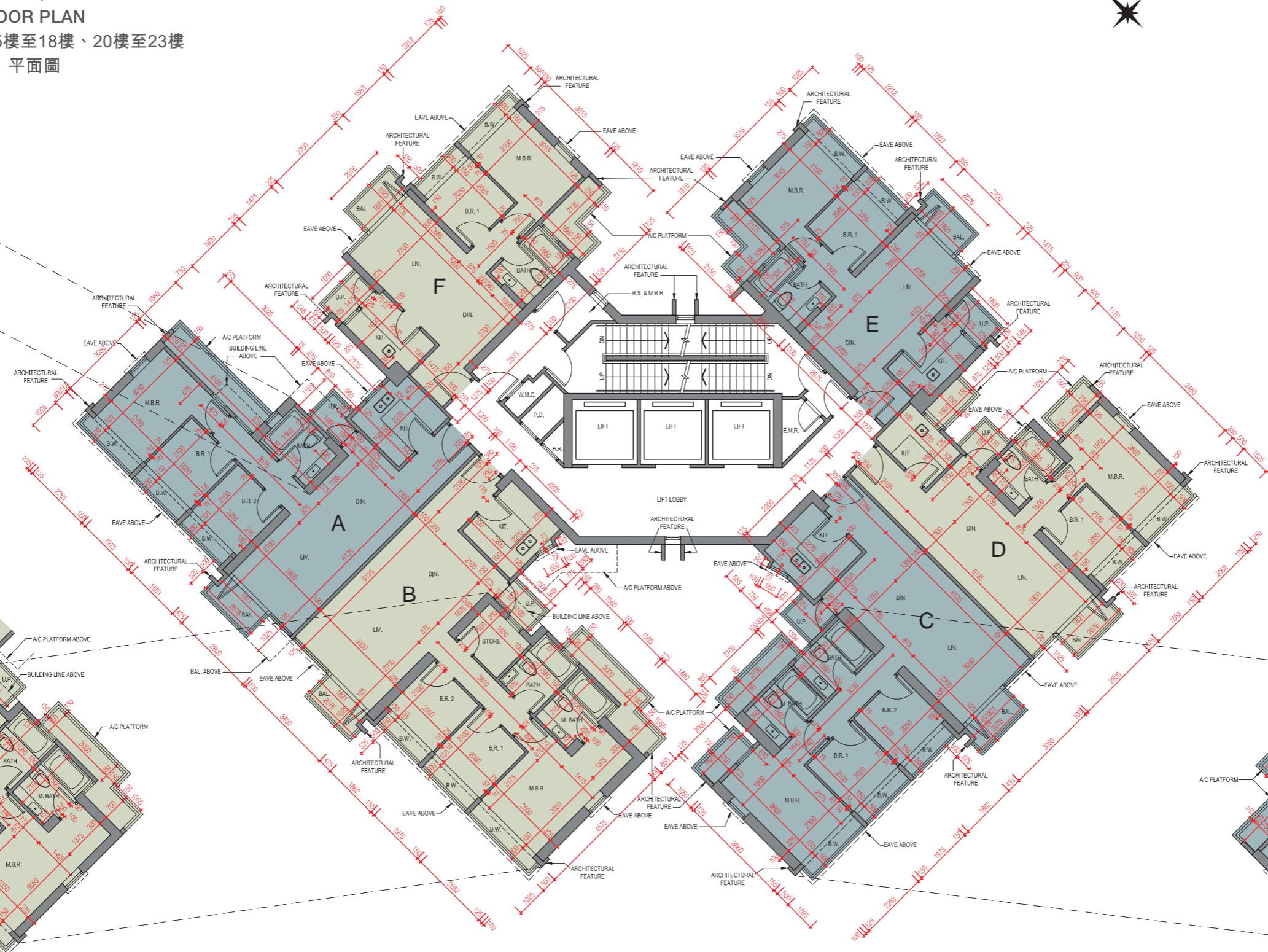
Tower 1 6/F-12/F, 15/F-18/F, 20/F-23/F and 25/F-33/F FLOOR PLAN

第1座 6樓至12樓、15樓至18樓、20樓至23樓及 25樓至33樓 平面圖



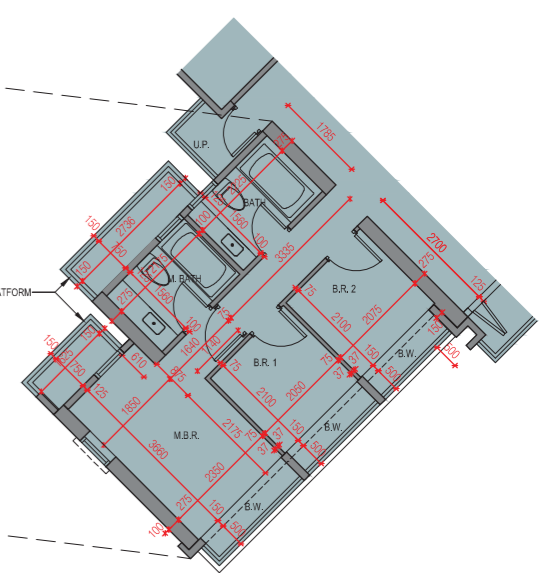
20樓至33樓之局部平面圖(不設24樓)

Part plan at 20/F to 33/F only (There is no designation of 24/F)



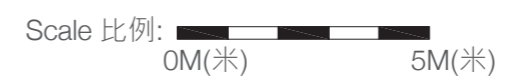
20樓至33樓之局部平面圖(不設24樓)

Part plan at 20/F to 33/F only (There is no designation of 24/F)



20樓至33樓之局部平面圖(不設24樓)

Part plan at 20/F to 33/F only (There is no designation of 24/F)



Note: The dimensions in the floor plan are all structural dimensions in millimeter.
備註：樓面平面圖之尺規所列數字為以毫米標示之建築結構尺寸。

FLOOR PLANS OF RESIDENTIAL PROPERTIES IN THE DEVELOPMENT

發展項目的住宅物業的樓面平面圖

Tower 1 6/F-12/F, 15/F-18/F, 20/F-23/F and 25/F-33/F FLOOR PLAN
第1座 6樓至12樓、15樓至18樓、20樓至23樓及25樓至33樓 平面圖

| Each of the Residential Property 每個住宅物業 | Tower 座數 | Floor 樓層 | Unit 單位 | | | | | |
|--|----------------|---|------------------------------------|------------------------------------|------|------|------|------|
| | | | A | B | C | D | E | F |
| Thickness of the floor slabs (excluding plaster)(mm) 樓板（不包括灰泥）的厚度（毫米） | Tower 1 第1座 | 6/F-12/F, 15/F-18/F, 20/F-23/F and 25/F - 30/F 6樓至12樓、 15樓至18樓、 20樓至23樓及 25樓至30樓 | 150 | 150 | 150 | 150 | 150 | 150 |
| Floor-to-floor height (mm) 層與層之間的高度（毫米） | | | 3325 | 3325 | 3325 | 3325 | 3325 | 3325 |
| Thickness of the floor slabs (excluding plaster)(mm) 樓板（不包括灰泥）的厚度（毫米） | | 31/F-32/F 31樓至32樓 | 150 | 150 | 150 | 150 | 150 | 150 |
| Floor-to-floor height (mm) 層與層之間的高度（毫米） | | | 3500 | 3500 | 3500 | 3500 | 3500 | 3500 |
| Thickness of the floor slabs (excluding plaster)(mm) 樓板（不包括灰泥）的厚度（毫米） | | 33/F 33樓 | 150 | 150 | 150 | 150 | 150 | 150 |
| Floor-to-floor height (mm) 層與層之間的高度（毫米） | | | 3500, 3450, 3300, 3250, 3100 | 3500, 3450, 3300, 3250, 3100 | 3500 | 3500 | 3500 | 3500 |

Notes:

- The internal areas of the residential properties on the upper floors will generally be slightly larger than those on the lower floors because of the reducing thickness of the structural walls on the upper floors.
- Please refer to page 19 of this Sales Brochure for legend of the terms and abbreviations used on the floor plan above and the explanatory notes that are applicable thereto.

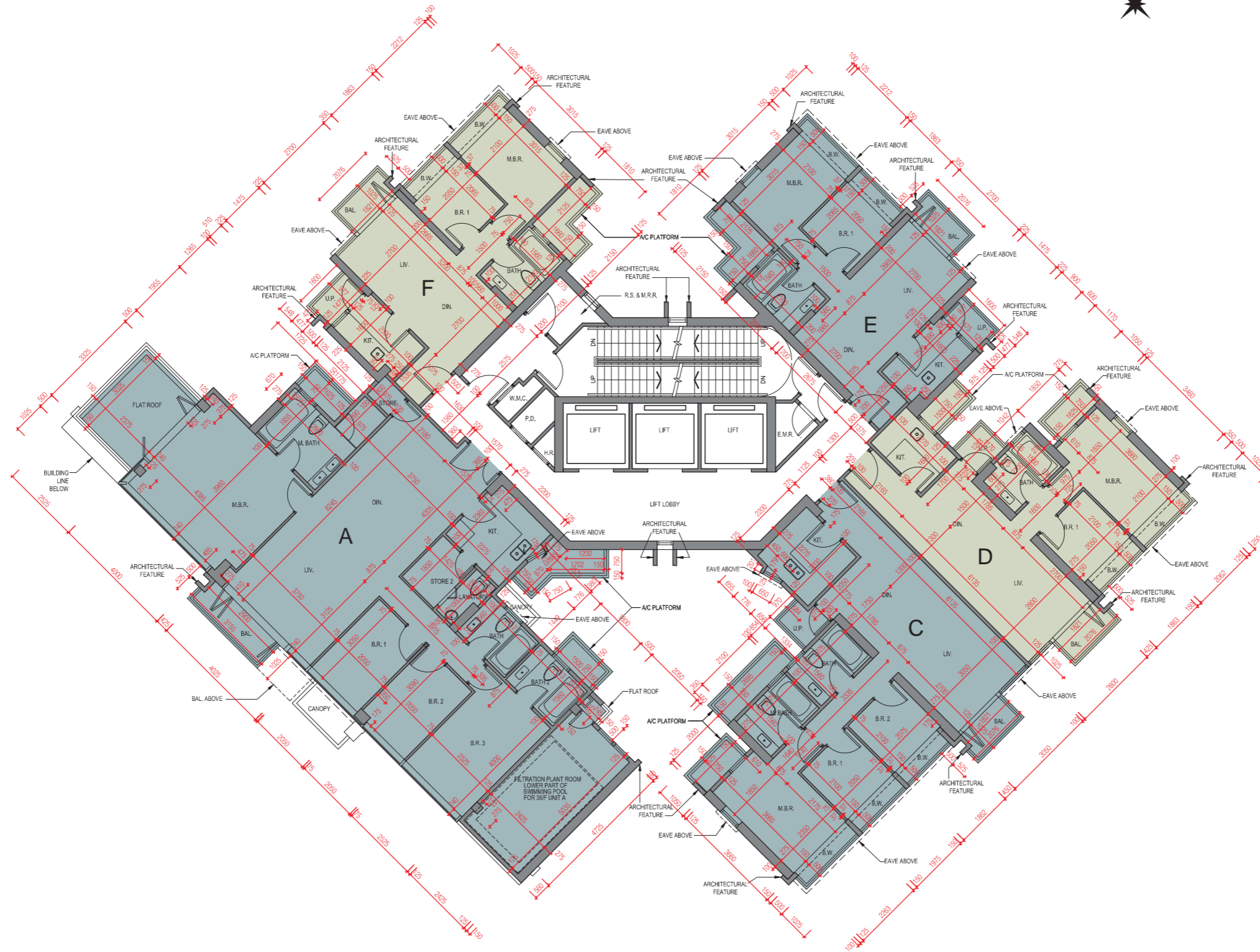
備註：

- 因住宅物業的較高樓層的結構牆的厚度遞減，較高樓層的內部面積，一般比較低樓層的內部面積稍大。
- 樓面平面圖中所使用名詞及簡稱之圖例及其適用的備註，請參閱本售樓說明書第19頁。

FLOOR PLANS OF RESIDENTIAL PROPERTIES IN THE DEVELOPMENT

發展項目的住宅物業的樓面平面圖

Tower 1 35/F FLOOR PLAN
 第1座 35樓 平面圖



Note: The dimensions in the floor plan are all structural dimensions in millimeter.
 備註：樓面平面圖之尺規所列數字為以毫米標示之建築結構尺寸。

FLOOR PLANS OF RESIDENTIAL PROPERTIES IN THE DEVELOPMENT

發展項目的住宅物業的樓面平面圖

Tower 1 35/F FLOOR PLAN
第1座 35樓 平面圖

| Each of the Residential Property 每個住宅物業 | Tower 座數 | Floor 樓層 | Unit 單位 | | | | |
|--|----------------|-------------|------------|------|------|------|------|
| | | | A | C | D | E | F |
| Thickness of the floor slabs (excluding plaster)(mm) 樓板（不包括灰泥）的厚度（毫米） | Tower 1 第1座 | 35/F 35樓 | 150, 225 | 150 | 150 | 150 | 150 |
| Floor-to-floor height (mm) 層與層之間的高度（毫米） | | | 3500, 3250 | 3500 | 3500 | 3500 | 3500 |

Notes:

1. The internal areas of the residential properties on the upper floors will generally be slightly larger than those on the lower floors because of the reducing thickness of the structural walls on the upper floors.
2. Please refer to page 19 of this Sales Brochure for legend of the terms and abbreviations used on the floor plan above and the explanatory notes that are applicable thereto.

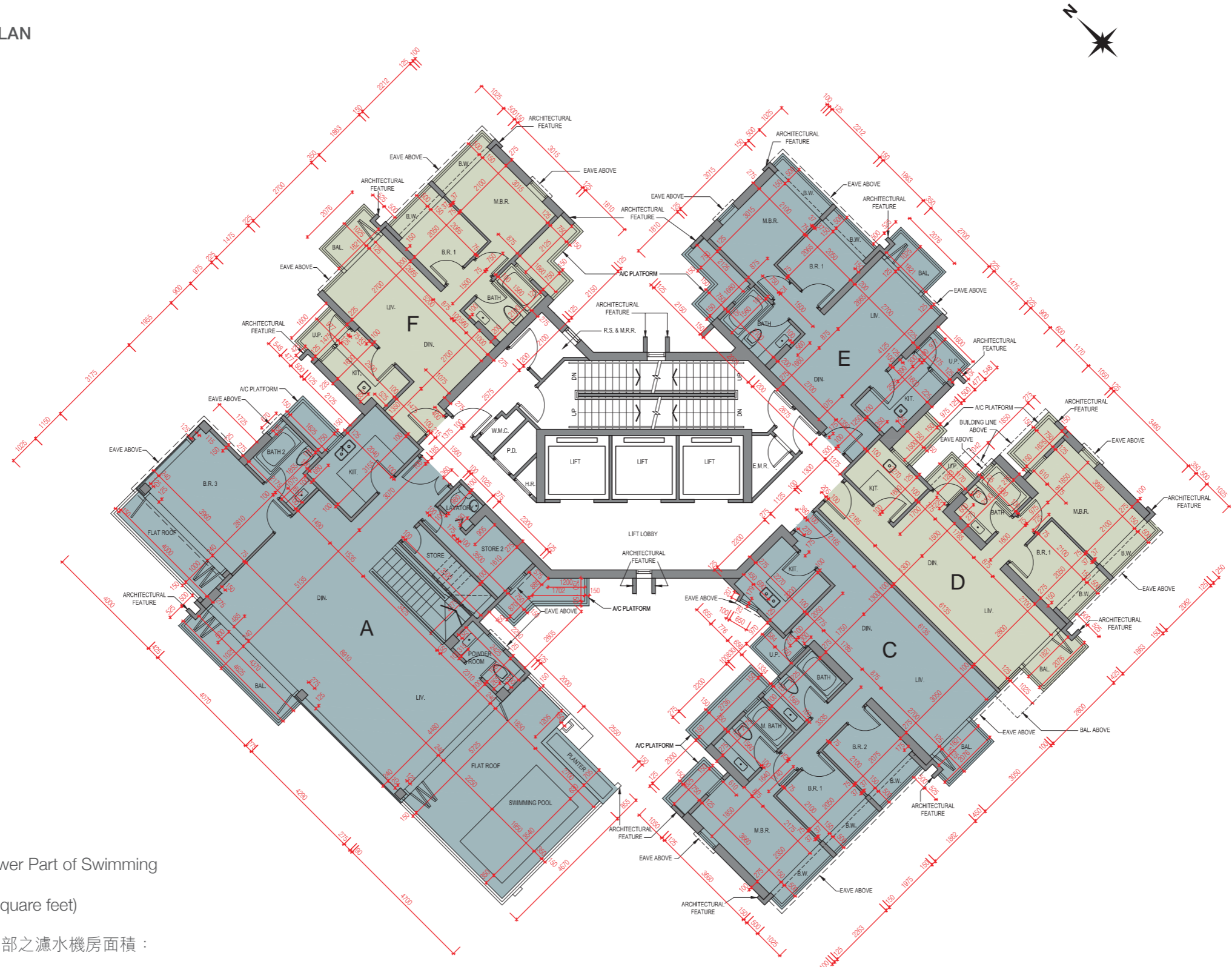
備註：

1. 因住宅物業的較高樓層的結構牆的厚度遞減，較高樓層的內部面積，一般比較低樓層的內部面積稍大。
2. 樓面平面圖中所使用名詞及簡稱之圖例及其適用的備註，請參閱本售樓說明書第19頁。

FLOOR PLANS OF RESIDENTIAL PROPERTIES IN THE DEVELOPMENT

發展項目的住宅物業的樓面平面圖

Tower 1 36/F FLOOR PLAN
第1座 36樓 平面圖



Area of Filtration Plant Room Lower Part of Swimming Pool For Unit A of 36/F & 37/F:
13.951 square metre (150 square feet)

於36樓及37樓A單位之游泳池底部之濾水機房面積：
13.951平方米(150平方呎)

Please refer to page 24 of this Sales Brochure.
請參閱本售樓說明書第24頁。

Scale 比例: 0M(米) 5M(米)

Note: The dimensions in the floor plan are all structural dimensions in millimeter.
備註：樓面平面圖之尺規所列數字為以毫米標示之建築結構尺寸。

FLOOR PLANS OF RESIDENTIAL PROPERTIES IN THE DEVELOPMENT

發展項目的住宅物業的樓面平面圖

Tower 1 36/F FLOOR PLAN
第1座 36樓 平面圖

| Each of the Residential Property 每個住宅物業 | Tower 座數 | Floor 樓層 | Unit 單位 | | | | |
|--|----------------|-------------|---------------------------|---------------------|---------------------|------|------|
| | | | A | C | D | E | F |
| Thickness of the floor slabs (excluding plaster)(mm) 樓板（不包括灰泥）的厚度（毫米） | Tower 1 第1座 | 36/F 36樓 | 150, 200, 275 | 150 | 150 | 150 | 150 |
| Floor-to-floor height (mm) 層與層之間的高度（毫米） | | | 3500, 3450, 3250, 3100 | 3500, 3450, 3100 | 3500, 3300, 3100 | 3500 | 3500 |

Notes:

1. The internal areas of the residential properties on the upper floors will generally be slightly larger than those on the lower floors because of the reducing thickness of the structural walls on the upper floors.
2. Please refer to page 19 of this Sales Brochure for legend of the terms and abbreviations used on the floor plan above and the explanatory notes that are applicable thereto.

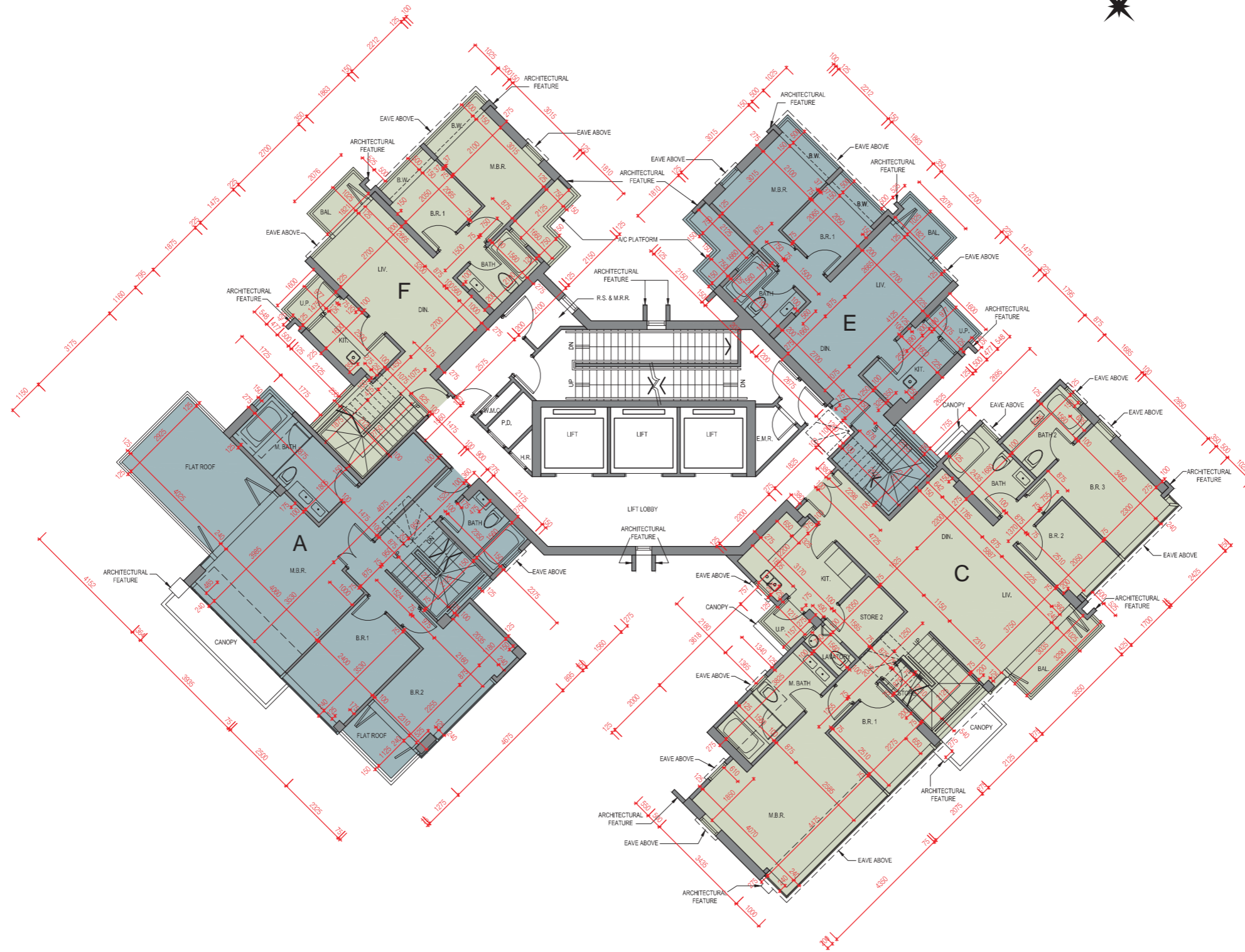
備註：

1. 因住宅物業的較高樓層的結構牆的厚度遞減，較高樓層的內部面積，一般比較低樓層的內部面積稍大。
2. 樓面平面圖中所使用名詞及簡稱之圖例及其適用的備註，請參閱本售樓說明書第19頁。

FLOOR PLANS OF RESIDENTIAL PROPERTIES IN THE DEVELOPMENT

發展項目的住宅物業的樓面平面圖

Tower 1 37/F FLOOR PLAN
 第1座 37樓 平面圖



Scale 比例: 0M(米) 5M(米)

Note: The dimensions in the floor plan are all structural dimensions in millimeter.
 備註：樓面平面圖之尺規所列數字為以毫米標示之建築結構尺寸。

FLOOR PLANS OF RESIDENTIAL PROPERTIES IN THE DEVELOPMENT

發展項目的住宅物業的樓面平面圖

Tower 1 37/F FLOOR PLAN
第1座 37樓 平面圖

| Each of the Residential Property 每個住宅物業 | Tower 座數 | Floor 樓層 | Unit 單位 | | | |
|--|----------------|-------------|------------|----------|------|------|
| | | | A | C | E | F |
| Thickness of the floor slabs (excluding plaster)(mm) 樓板（不包括灰泥）的厚度（毫米） | Tower 1 第1座 | 37/F 37樓 | 150, 200 | 150, 200 | 150 | 150 |
| Floor-to-floor height (mm) 層與層之間的高度（毫米） | | | 3500 | 3500 | 3500 | 3500 |

Notes:

1. The internal areas of the residential properties on the upper floors will generally be slightly larger than those on the lower floors because of the reducing thickness of the structural walls on the upper floors.
2. Please refer to page 19 of this Sales Brochure for legend of the terms and abbreviations used on the floor plan above and the explanatory notes that are applicable thereto.

備註：

1. 因住宅物業的較高樓層的結構牆的厚度遞減，較高樓層的內部面積，一般比較低樓層的內部面積稍大。
2. 樓面平面圖中所使用名詞及簡稱之圖例及其適用的備註，請參閱本售樓說明書第19頁。

FLOOR PLANS OF RESIDENTIAL PROPERTIES IN THE DEVELOPMENT

發展項目的住宅物業的樓面平面圖

Tower 1
第1座

Roof FLOOR PLAN
天台 平面圖



Scale 比例: 0M(米) 5M(米)

Note: The dimensions in the floor plan are all structural dimensions in millimeter.
備註：樓面平面圖之尺規所列數字為以毫米標示之建築結構尺寸。

FLOOR PLANS OF RESIDENTIAL PROPERTIES IN THE DEVELOPMENT

發展項目的住宅物業的樓面平面圖

Tower 1 Roof FLOOR PLAN
第1座 天台 平面圖

| Each of the Residential Property 每個住宅物業 | Tower 座數 | Floor 樓層 | Unit 單位 | | | |
|--|----------------|-------------|------------|-----|-----|-----|
| | | | A | C | E | F |
| Thickness of the floor slabs (excluding plaster)(mm) 樓板（不包括灰泥）的厚度（毫米） | Tower 1 第1座 | Roof 天台 | N/A | N/A | N/A | N/A |
| Floor-to-floor height (mm) 層與層之間的高度（毫米） | | | N/A | N/A | N/A | N/A |

Notes:

1. The internal areas of the residential properties on the upper floors will generally be slightly larger than those on the lower floors because of the reducing thickness of the structural walls on the upper floors.
2. Please refer to page 19 of this Sales Brochure for legend of the terms and abbreviations used on the floor plan above and the explanatory notes that are applicable thereto.

備註：

1. 因住宅物業的較高樓層的結構牆的厚度遞減，較高樓層的內部面積，一般比較低樓層的內部面積稍大。
2. 樓面平面圖中所使用名詞及簡稱之圖例及其適用的備註，請參閱本售樓說明書第19頁。

FLOOR PLANS OF RESIDENTIAL PROPERTIES IN THE DEVELOPMENT

發展項目的住宅物業的樓面平面圖

Tower 2 5/F FLOOR PLAN
第2座 5樓 平面圖



Scale 比例: 0M(米) 5M(米)

Note: The dimensions in the floor plan are all structural dimensions in millimeter.
備註：樓面平面圖之尺規所列數字為以毫米標示之建築結構尺寸。

FLOOR PLANS OF RESIDENTIAL PROPERTIES IN THE DEVELOPMENT

發展項目的住宅物業的樓面平面圖

Tower 2 5/F FLOOR PLAN
第2座 5樓 平面圖

| Each of the Residential Property 每個住宅物業 | Tower 座數 | Floor 樓層 | Unit 單位 | | | | | |
|--|----------------|-------------|------------|------|------|------|------|------|
| | | | A | B | C | D | E | F |
| Thickness of the floor slabs (excluding plaster)(mm) 樓板（不包括灰泥）的厚度（毫米） | Tower 2 第2座 | 5/F 5樓 | 150 | 150 | 150 | 150 | 150 | 150 |
| Floor-to-floor height (mm) 層與層之間的高度（毫米） | | | 3325 | 3325 | 3325 | 3325 | 3325 | 3325 |

Notes:

1. The internal areas of the residential properties on the upper floors will generally be slightly larger than those on the lower floors because of the reducing thickness of the structural walls on the upper floors.
2. Please refer to page 19 of this Sales Brochure for legend of the terms and abbreviations used on the floor plan above and the explanatory notes that are applicable thereto.

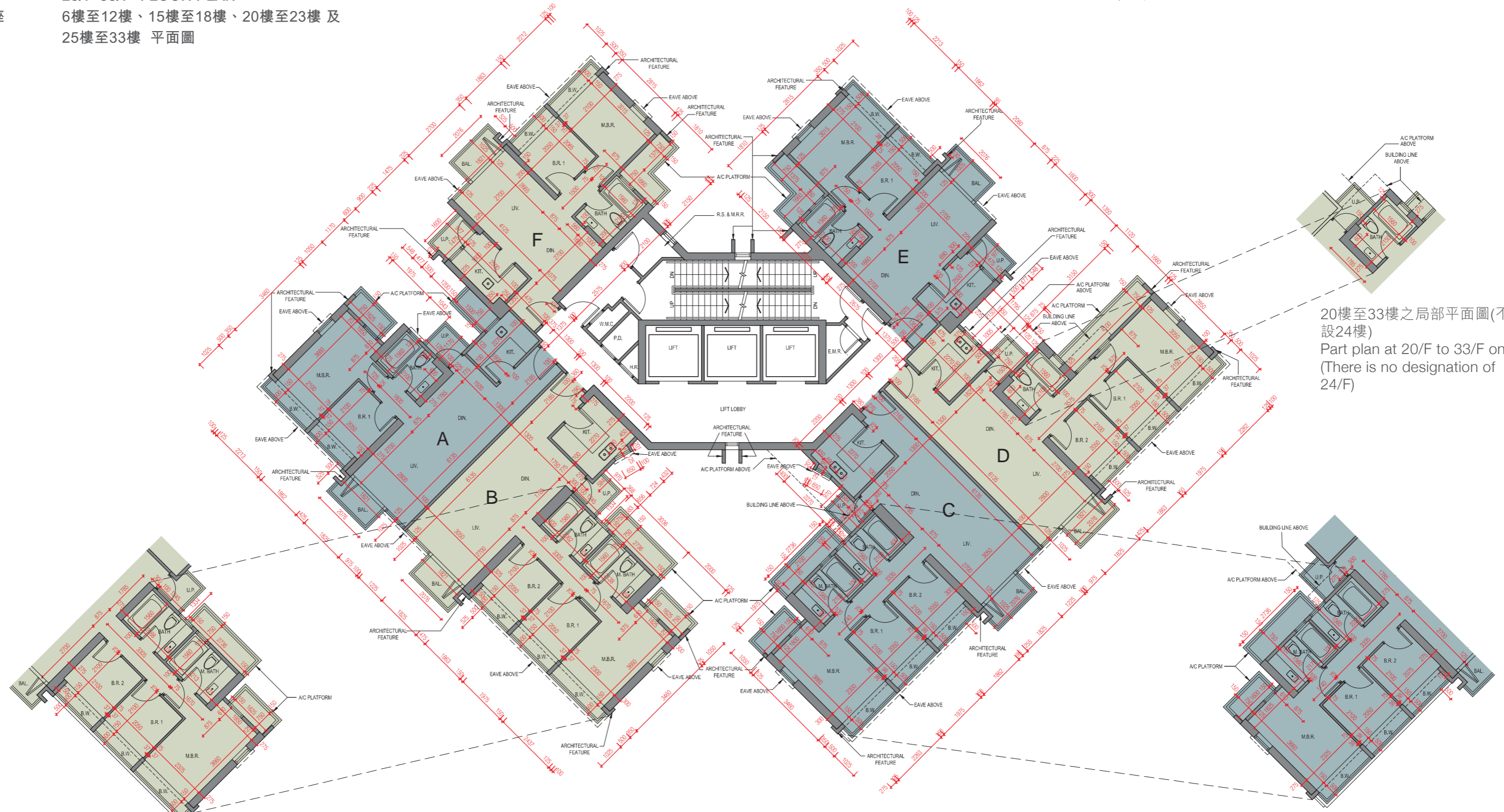
備註：

1. 因住宅物業的較高樓層的結構牆的厚度遞減，較高樓層的內部面積，一般比較低樓層的內部面積稍大。
2. 樓面平面圖中所使用名詞及簡稱之圖例及其適用的備註，請參閱本售樓說明書第19頁。

FLOOR PLANS OF RESIDENTIAL PROPERTIES IN THE DEVELOPMENT

發展項目的住宅物業的樓面平面圖

Tower 2 6/F-12/F, 15/F-18/F, 20/F-23/F and 25/F-33/F FLOOR PLAN
 第2座 6樓至12樓、15樓至18樓、20樓至23樓及25樓至33樓 平面圖



20樓至33樓之局部平面圖(不設24樓)
 Part plan at 20/F to 33/F only
 (There is no designation of 24/F)

20樓至33樓之局部平面圖(不設24樓)
 Part plan at 20/F to 33/F only (There is no designation of 24/F)

Scale 比例: 0M(米) 5M(米)

20樓至33樓之局部平面圖(不設24樓)
 Part plan at 20/F to 33/F only
 (There is no designation of 24/F)

Note: The dimensions in the floor plan are all structural dimensions in millimeter.
 備註：樓面平面圖之尺規所列數字為以毫米標示之建築結構尺寸。

FLOOR PLANS OF RESIDENTIAL PROPERTIES IN THE DEVELOPMENT

發展項目的住宅物業的樓面平面圖

Tower 2 6/F-12/F, 15/F-18/F, 20/F-23/F and 25/F-33/F FLOOR PLAN
第2座 6樓至12樓、15樓至18樓、20樓至23樓及25樓至33樓 平面圖

| Each of the Residential Property 每個住宅物業 | Tower 座數 | Floor 樓層 | Unit 單位 | | | | | |
|--|----------------|---|------------|------|------------------------------------|---------------------------|------|------|
| | | | A | B | C | D | E | F |
| Thickness of the floor slabs (excluding plaster)(mm) 樓板（不包括灰泥）的厚度（毫米） | Tower 2 第2座 | 6/F-12/F, 15/F-18/F, 20/F-23/F and 25/F - 30/F 6樓至12樓、15 樓至18樓、20樓 至23樓及25樓至 30樓 | 150 | 150 | 150 | 150 | 150 | 150 |
| Floor-to-floor height (mm) 層與層之間的高度（毫米） | | | 3325 | 3325 | 3325 | 3325 | 3325 | 3325 |
| Thickness of the floor slabs (excluding plaster)(mm) 樓板（不包括灰泥）的厚度（毫米） | | 31/F-32/F 31樓至32樓 | 150 | 150 | 150 | 150 | 150 | 150 |
| Floor-to-floor height (mm) 層與層之間的高度（毫米） | | | 3500 | 3500 | 3500 | 3500 | 3500 | 3500 |
| Thickness of the floor slabs (excluding plaster)(mm) 樓板（不包括灰泥）的厚度（毫米） | | 33/F 33樓 | 150 | 150 | 150 | 150 | 150 | 150 |
| Floor-to-floor height (mm) 層與層之間的高度（毫米） | | | 3500 | 3500 | 3500, 3450, 3300, 3250, 3100 | 3500, 3300, 3250, 3100 | 3500 | 3500 |

Notes:

- The internal areas of the residential properties on the upper floors will generally be slightly larger than those on the lower floors because of the reducing thickness of the structural walls on the upper floors.
- Please refer to page 19 of this Sales Brochure for legend of the terms and abbreviations used on the floor plan above and the explanatory notes that are applicable thereto.

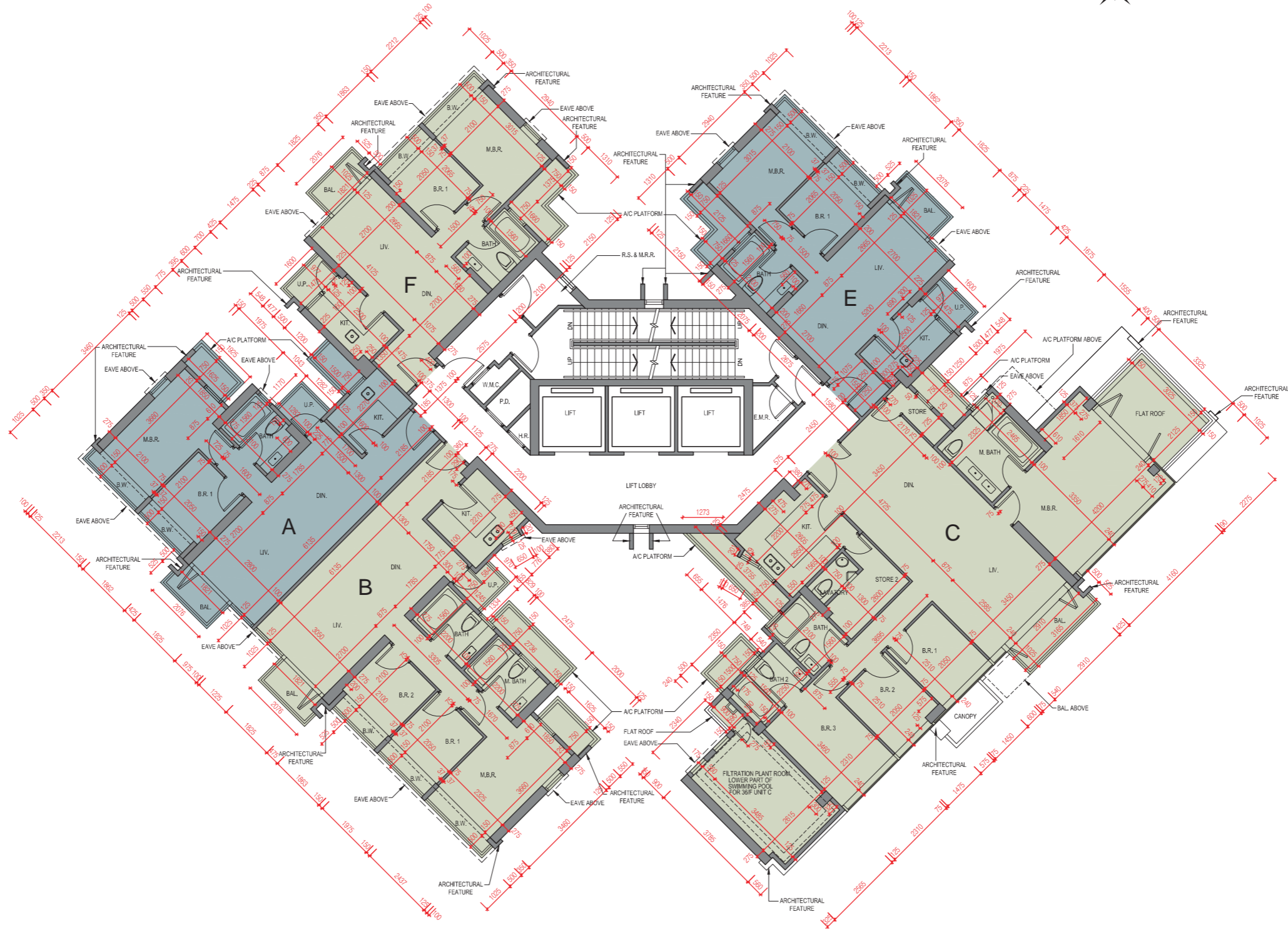
備註：

- 因住宅物業的較高樓層的結構牆的厚度遞減，較高樓層的內部面積，一般比較低樓層的內部面積稍大。
- 樓面平面圖中所使用名詞及簡稱之圖例及其適用的備註，請參閱本售樓說明書第19頁。

FLOOR PLANS OF RESIDENTIAL PROPERTIES IN THE DEVELOPMENT

發展項目的住宅物業的樓面平面圖

Tower 2 35/F FLOOR PLAN
第2座 35樓 平面圖



Scale 比例: 0M(米) 5M(米)

Note: The dimensions in the floor plan are all structural dimensions in millimeter.
備註：樓面平面圖之尺規所列數字為以毫米標示之建築結構尺寸。

FLOOR PLANS OF RESIDENTIAL PROPERTIES IN THE DEVELOPMENT

發展項目的住宅物業的樓面平面圖

Tower 2 35/F FLOOR PLAN
第2座 35樓 平面圖

| Each of the Residential Property 每個住宅物業 | Tower 座數 | Floor 樓層 | Unit 單位 | | | | |
|--|----------------|-------------|------------|------|---------------------|------|------|
| | | | A | B | C | E | F |
| Thickness of the floor slabs (excluding plaster)(mm) 樓板（不包括灰泥）的厚度（毫米） | Tower 2 第2座 | 35/F 35樓 | 150 | 150 | 150, 225 | 150 | 150 |
| Floor-to-floor height (mm) 層與層之間的高度（毫米） | | | 3500 | 3500 | 3500, 3250, 3100 | 3500 | 3500 |

Notes:

1. The internal areas of the residential properties on the upper floors will generally be slightly larger than those on the lower floors because of the reducing thickness of the structural walls on the upper floors.
2. Please refer to page 19 of this Sales Brochure for legend of the terms and abbreviations used on the floor plan above and the explanatory notes that are applicable thereto.

備註：

1. 因住宅物業的較高樓層的結構牆的厚度遞減，較高樓層的內部面積，一般比較低樓層的內部面積稍大。
2. 樓面平面圖中所使用名詞及簡稱之圖例及其適用的備註，請參閱本售樓說明書第19頁。

FLOOR PLANS OF RESIDENTIAL PROPERTIES IN THE DEVELOPMENT

發展項目的住宅物業的樓面平面圖

Tower 2 36/F FLOOR PLAN
第2座 36樓 平面圖



Area of Filtration Plant Room Lower Part of Swimming Pool For Unit C of 36/F & 37/F:
12.061 square metre (130 square feet)

於36樓及37樓C單位之游泳池底部之濾水機房面積：
12.061平方米(130平方呎)

Please refer to page 36 of this sales brochure.
請參閱本售樓說明書第36頁。

Scale 比例: 0M(米) 5M(米)

Note: The dimensions in the floor plan are all structural dimensions in millimeter.
備註：樓面平面圖之尺規所列數字為以毫米標示之建築結構尺寸。

FLOOR PLANS OF RESIDENTIAL PROPERTIES IN THE DEVELOPMENT

發展項目的住宅物業的樓面平面圖

Tower 2 36/F FLOOR PLAN
第2座 36樓 平面圖

| Each of the Residential Property 每個住宅物業 | Tower 座數 | Floor 樓層 | Unit 單位 | | | | |
|--|----------------|-------------|------------|---------------------|---------------------------|------|------|
| | | | A | B | C | E | F |
| Thickness of the floor slabs (excluding plaster)(mm) 樓板（不包括灰泥）的厚度（毫米） | Tower 2 第2座 | 36/F 36樓 | 150 | 150 | 150, 200 | 150 | 150 |
| Floor-to-floor height (mm) 層與層之間的高度（毫米） | | | 3500, 3300 | 3500, 3450, 3100 | 3500, 3450, 3250, 3100 | 3500 | 3500 |

Notes:

1. The internal areas of the residential properties on the upper floors will generally be slightly larger than those on the lower floors because of the reducing thickness of the structural walls on the upper floors.
2. Please refer to page 19 of this Sales Brochure for legend of the terms and abbreviations used on the floor plan above and the explanatory notes that are applicable thereto.

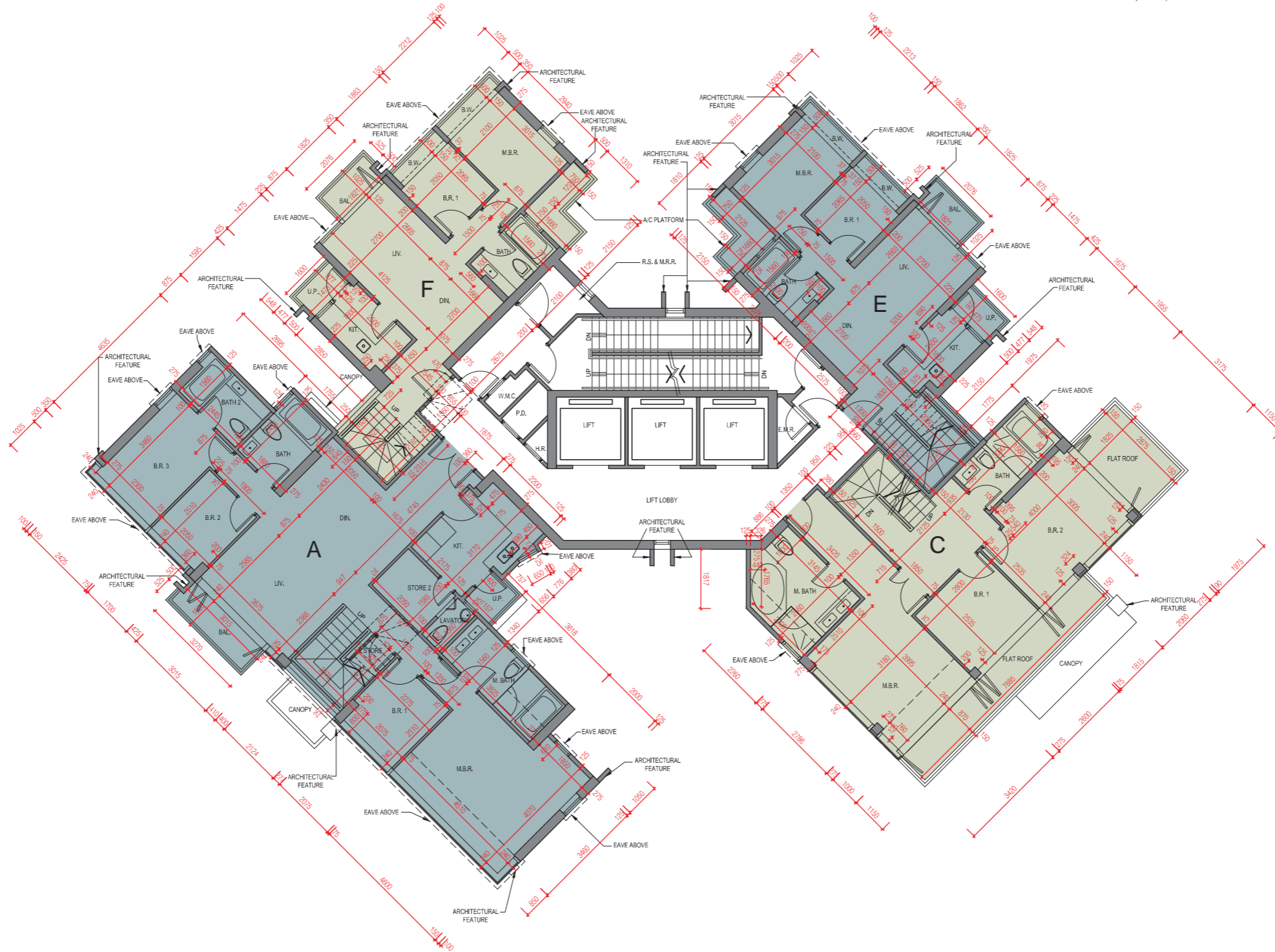
備註：

1. 因住宅物業的較高樓層的結構牆的厚度遞減，較高樓層的內部面積，一般比較低樓層的內部面積稍大。
2. 樓面平面圖中所使用名詞及簡稱之圖例及其適用的備註，請參閱本售樓說明書第19頁。

FLOOR PLANS OF RESIDENTIAL PROPERTIES IN THE DEVELOPMENT

發展項目的住宅物業的樓面平面圖

Tower 2 37/F FLOOR PLAN
 第2座 37樓 平面圖



Scale 比例: 0M(米) 5M(米)

Note: The dimensions in the floor plan are all structural dimensions in millimeter.
 備註：樓面平面圖之尺規所列數字為以毫米標示之建築結構尺寸。

FLOOR PLANS OF RESIDENTIAL PROPERTIES IN THE DEVELOPMENT

發展項目的住宅物業的樓面平面圖

Tower 2 37/F FLOOR PLAN
第2座 37樓 平面圖

| Each of the Residential Property 每個住宅物業 | Tower 座數 | Floor 樓層 | Unit 單位 | | | |
|--|----------------|-------------|------------|----------|------|------|
| | | | A | C | E | F |
| Thickness of the floor slabs (excluding plaster)(mm) 樓板（不包括灰泥）的厚度（毫米） | Tower 2 第2座 | 37/F 37樓 | 150, 200 | 150, 200 | 150 | 150 |
| Floor-to-floor height (mm) 層與層之間的高度（毫米） | | | 3500 | 3500 | 3500 | 3500 |

Notes:

1. The internal areas of the residential properties on the upper floors will generally be slightly larger than those on the lower floors because of the reducing thickness of the structural walls on the upper floors.
2. Please refer to page 19 of this Sales Brochure for legend of the terms and abbreviations used on the floor plan above and the explanatory notes that are applicable thereto.

備註：

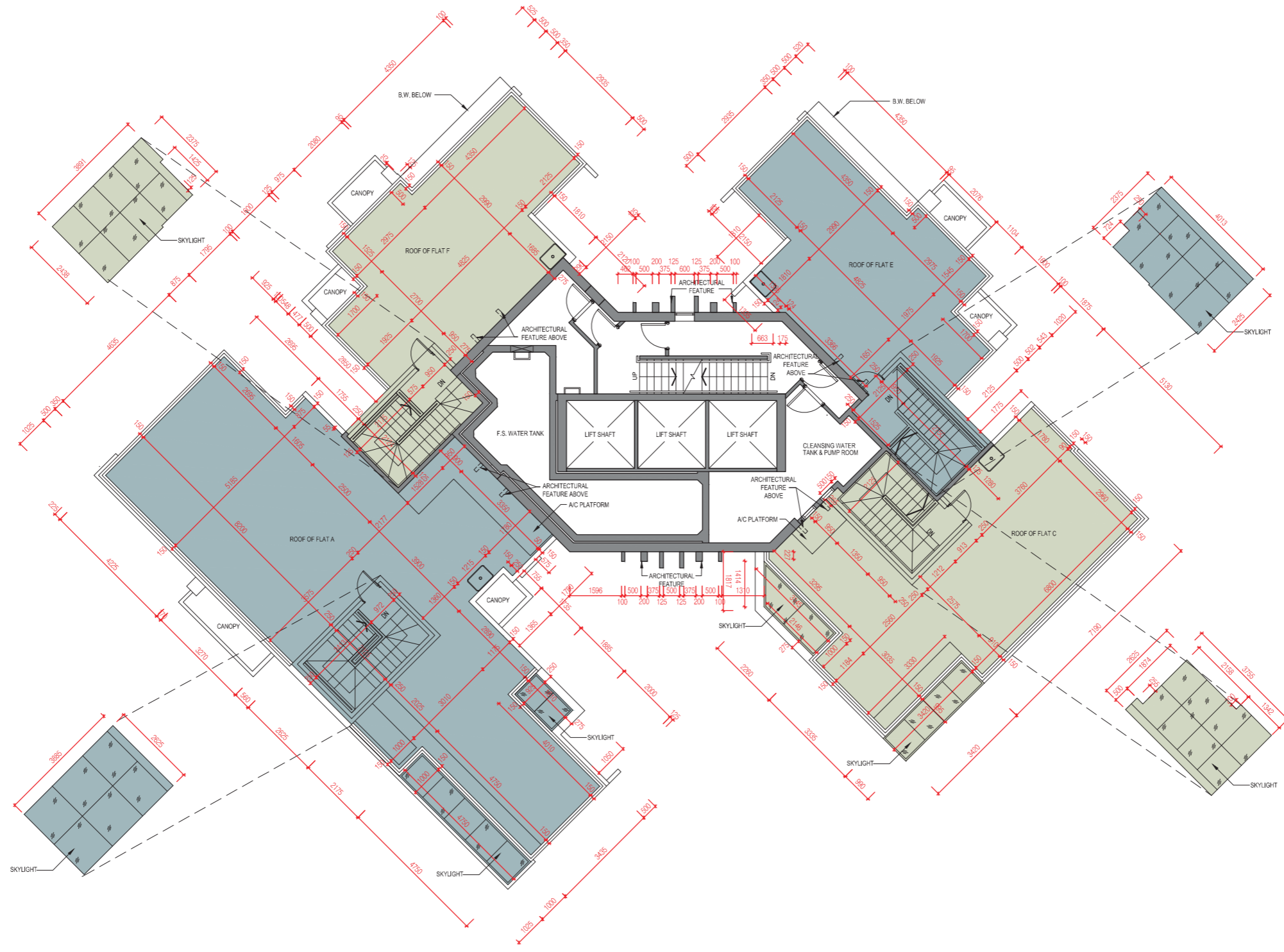
1. 因住宅物業的較高樓層的結構牆的厚度遞減，較高樓層的內部面積，一般比較低樓層的內部面積稍大。
2. 樓面平面圖中所使用名詞及簡稱之圖例及其適用的備註，請參閱本售樓說明書第19頁。

FLOOR PLANS OF RESIDENTIAL PROPERTIES IN THE DEVELOPMENT

發展項目的住宅物業的樓面平面圖

Tower 2
第2座

Roof FLOOR PLAN
天台 平面圖



Note: The dimensions in the floor plan are all structural dimensions in millimeter.
備註：樓面平面圖之尺規所列數字為以毫米標示之建築結構尺寸。

FLOOR PLANS OF RESIDENTIAL PROPERTIES IN THE DEVELOPMENT

發展項目的住宅物業的樓面平面圖

Tower 2 Roof FLOOR PLAN
第2座 天台 平面圖

| Each of the Residential Property 每個住宅物業 | Tower 座數 | Floor 樓層 | Unit 單位 | | | |
|--|----------------|-------------|------------|-----|-----|-----|
| | | | A | C | E | F |
| Thickness of the floor slabs (excluding plaster)(mm) 樓板（不包括灰泥）的厚度（毫米） | Tower 2 第2座 | Roof 天台 | N/A | N/A | N/A | N/A |
| Floor-to-floor height (mm) 層與層之間的高度（毫米） | | | N/A | N/A | N/A | N/A |

Notes:

1. The internal areas of the residential properties on the upper floors will generally be slightly larger than those on the lower floors because of the reducing thickness of the structural walls on the upper floors.
2. Please refer to page 19 of this Sales Brochure for legend of the terms and abbreviations used on the floor plan above and the explanatory notes that are applicable thereto.

備註：

1. 因住宅物業的較高樓層的結構牆的厚度遞減，較高樓層的內部面積，一般比較低樓層的內部面積稍大。
2. 樓面平面圖中所使用名詞及簡稱之圖例及其適用的備註，請參閱本售樓說明書第19頁。