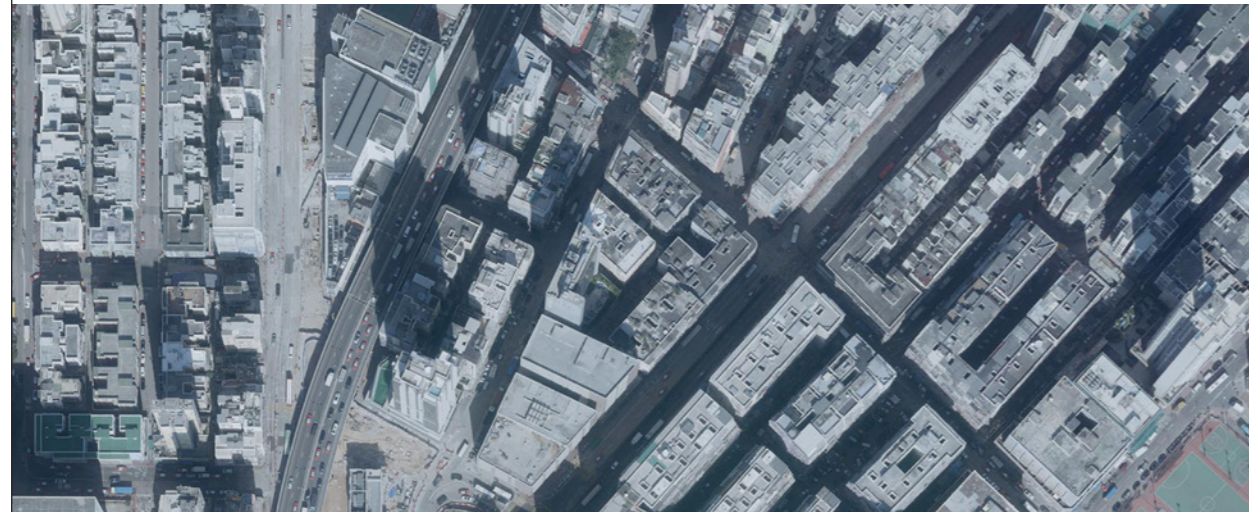
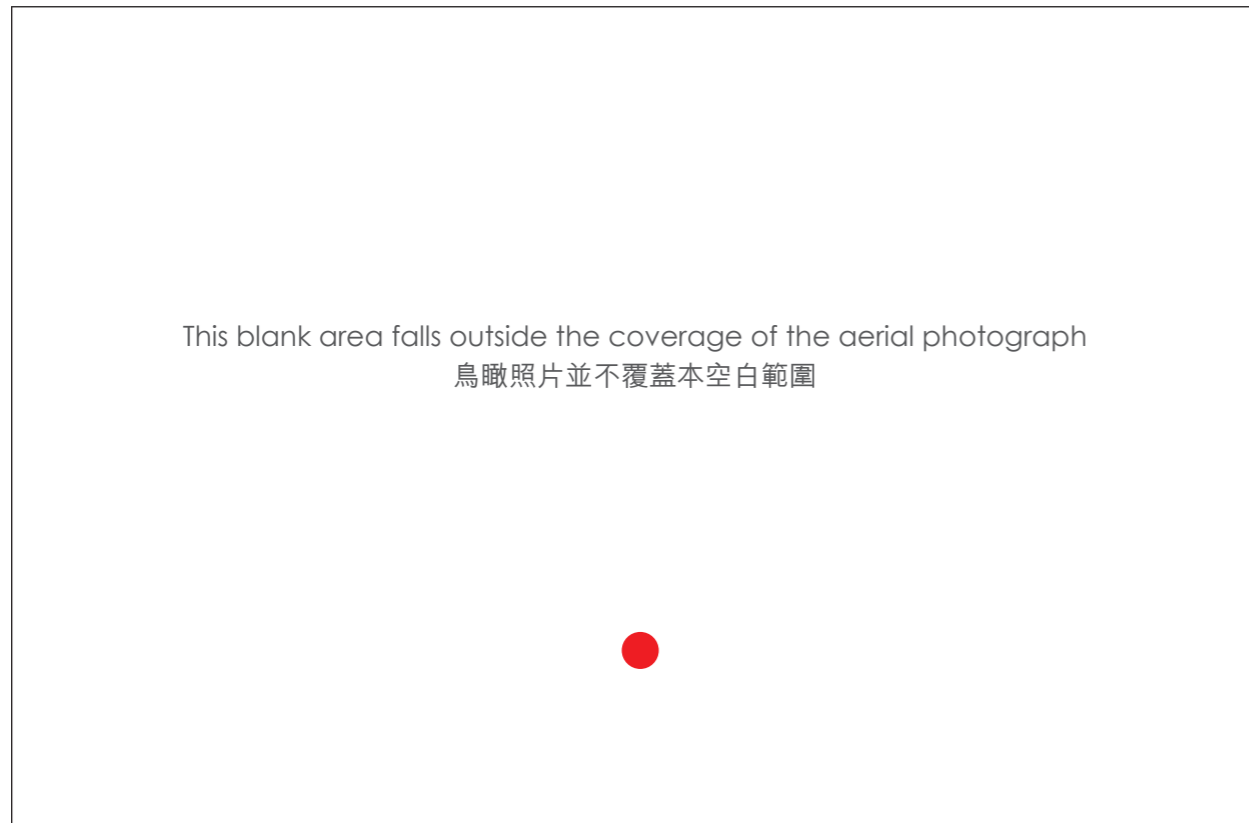


# Aerial photograph of the development

## 發展項目的鳥瞰照片

Adopted from part of the aerial photograph taken by the Survey and Mapping Office of Lands Department at a flying height of 6,900 feet, photo No. E051196C, dated 17 December 2018.

摘錄自地政總署測繪處於2018年12月17日在6,900呎飛行高度拍攝之鳥瞰照片，編號為E051196C。



● Location of the Development  
發展項目的位置

Survey and Mapping Office, Lands Department, The Government of the HKSAR © Copyright reserved - reproduction by permission only.

香港特別行政區政府地政總署測繪處©版權所有，未經許可，不得複製。

Remarks :

1. The aerial photograph is available for free inspection during normal office hours at the sales office.
2. Due to technical reasons as a result of the irregular boundary of the Development, the aerial photograph has shown more than the area required under the Residential Properties (First-hand Sales) Ordinance.

備註：

1. 該鳥瞰照片存於售樓處，於正常辦公時間內供免費查閱。
2. 因發展項目的不規則界線引致的技術原因，鳥瞰照片所顯示的範圍多於《一手住宅物業銷售條例》所要求。

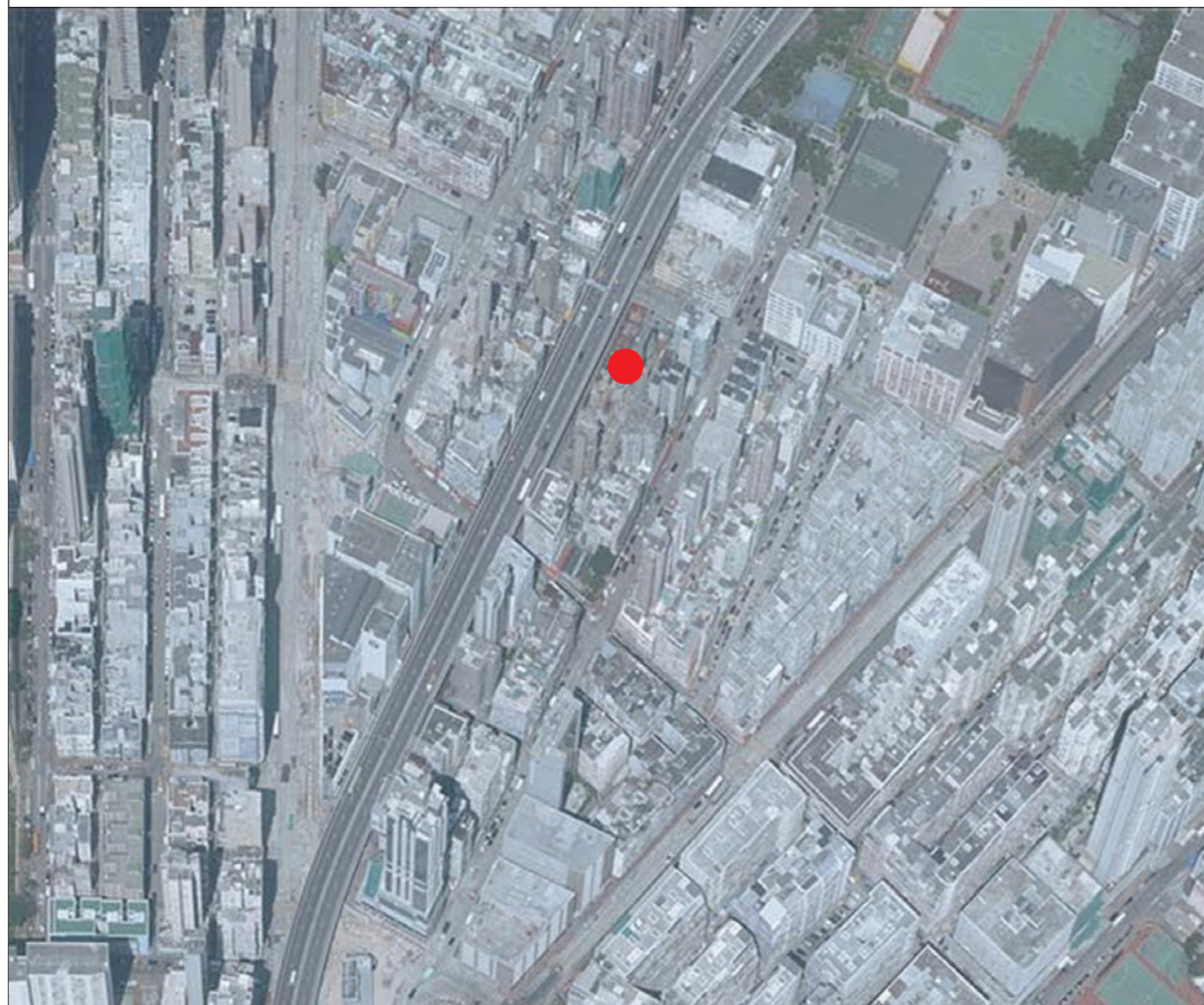
## Aerial photograph of the development

### 發展項目的鳥瞰照片

Adopted from part of the aerial photograph taken by the Survey and Mapping Office of Lands Department at a flying height of 6,900 feet, photo No. E046771C, dated 5 October 2018.

摘錄自地政總署測繪處於2018年10月5日在6,900呎飛行高度拍攝之鳥瞰照片，編號為E046771C。

This blank area falls outside the coverage of the aerial photograph  
鳥瞰照片並不覆蓋本空白範圍



● Location of the Development  
發展項目的位置

Survey and Mapping Office, Lands Department, The Government of the HKSAR © Copyright reserved - reproduction by permission only.

香港特別行政區政府地政總署測繪處©版權所有，未經許可，不得複製。

Adopted from part of the aerial photograph taken by the Survey and Mapping Office of Lands Department at a flying height of 6,900 feet, photo No. E044469C, dated 11 September 2018.

摘錄自地政總署測繪處於2018年9月11日在6,900呎飛行高度拍攝之鳥瞰照片，編號為E044469C。

This blank area falls outside the coverage of the aerial photograph  
鳥瞰照片並不覆蓋本空白範圍



Remarks :

1. The aerial photographs are available for free inspection during normal office hours at the sales office.
2. Due to technical reasons as a result of the irregular boundary of the Development, the aerial photographs have shown more than the area required under the Residential Properties (First-hand Sales) Ordinance.

備註：

1. 該等鳥瞰照片存於售樓處，於正常辦公時間內供免費查閱。
2. 因發展項目的不規則界線引致的技術原因，鳥瞰照片所顯示的範圍多於《一手住宅物業銷售條例》所要求。

# Aerial photograph of the development

## 發展項目的鳥瞰照片

Adopted from part of the aerial photograph taken by the Survey and Mapping Office of Lands Department at a flying height of 6,000 feet, photo No. E030949C, dated 27 December 2017.  
摘錄自地政總署測繪處於2017年12月27日在6,000呎飛行高度拍攝之鳥瞰照片，編號為E030949C。



This blank area falls outside the coverage of the aerial photograph  
鳥瞰照片並不覆蓋本空白範圍

● Location of the Development  
發展項目的位置

Survey and Mapping Office, Lands Department, The Government of the HKSAR © Copyright reserved - reproduction by permission only.

香港特別行政區政府地政總署測繪處©版權所有，未經許可，不得複製。

Adopted from part of the aerial photograph taken by the Survey and Mapping Office of Lands Department at a flying height of 6,000 feet, photo No. E030950C, dated 27 December 2017.  
摘錄自地政總署測繪處於2017年12月27日在6,000呎飛行高度拍攝之鳥瞰照片，編號為E030950C。



This blank area falls outside the coverage of the aerial photograph  
鳥瞰照片並不覆蓋本空白範圍

Remarks :

1. The aerial photographs are available for free inspection during normal office hours at the sales office.
2. Due to technical reasons as a result of the irregular boundary of the Development, the aerial photographs have shown more than the area required under the Residential Properties (First-hand Sales) Ordinance.

備註：

1. 該等鳥瞰照片存於售樓處，於正常辦公時間內供免費查閱。
2. 因發展項目的不規則界線引致的技術原因，鳥瞰照片所顯示的範圍多於《一手住宅物業銷售條例》所要求。