

Legend of terms and abbreviations used in the floor plans of residential properties in the Development

發展項目的住宅物業的樓面平面圖中所使用名詞及簡稱之圖例

A/C PLATFORM = AIR CONDITIONER PLATFORM = 冷氣機平台

ACOUSTIC BAL. = ACOUSTIC BALCONY = 隔音露台

ACOUSTIC FINS = 隔聲鱗

ACOUSTIC WINDOW (TOP HUNG TYPE) = 減音窗(上懸式)

BAL. = BALCONY = 露台

BATH = BATHROOM = 浴室

BED RM. = BEDROOM = 睡房

BED RM.1 = BEDROOM 1 = 睡房 1

BED RM.2 = BEDROOM 2 = 睡房 2

BUILDING LINE AT __/F = 於__樓的建築物邊線

CANOPY = 簷篷

COMMON FLAT ROOF = 公用平台

COMMON FLAT ROOF (ACCESSIBLE BY GONDOLA ONLY) = 公用平台(只供吊船使用)

D = DOWN = 落

ELE = ELECTRIC ROOM = 電掣房

ELE & ELV CABLE DUCT = 電掣及特低壓電管道

ELV = EXTRA LOW VOLTAGE DUCT = 特低壓電線槽

E/M = ELECTRIC & MECHANICAL PLAT ROOM = 機電房

EMERGENCY GENERATOR ROOM = 緊急發電機房

EMR = ELECTRICAL METER ROOM = 電錶房

FIXED GLAZING = 隔音玻璃

FLAT ROOF = 平台

F.S.P.D. = FIRE SERVICES PIPE DUCT = 消防管道

GLASS BALUSTRADE 1250mm H. W/ SOUND ABSORPTION MATERIAL ON INNER SIDE

= 內層附有吸音物料的1250mm高玻璃圍欄

HR = HOSE REEL = 消防喉轆

KIT. = KITCHEN = 廚房

LAV. = LAVATORY = 廁所

LIFT = 升降機

LIFT LOBBY = 升降機大堂

LIGHT WELL = 天井

LIV./ DIN. = LIVING ROOM / DINING ROOM = 客廳/飯廳

METAL AF. = METAL ARCHITECTURAL FEATURE = 金屬建築裝飾

M. BATH = MASTER BATHROOM = 主人浴室

MBR = MASTER BEDROOM = 主人睡房

M.G. = METAL GRILLE = 金屬格柵

OVER RUN = LIFT OVER RUN = 升降機緩衝

P.D. = PIPE DUCT = 管槽

R.C. FENCE WALL 1500H. A.F.F.L. = 1500mm 高鋼筋混凝土圍牆

RS & MRR. = REFUSE STORAGE AND MATERIAL RECOVERY ROOM = 垃圾及物料回收房

SELF CLOSING FRENCH DR. = SELF CLOSING FRENCH DOOR = 落地玻璃門附設自動關閉設施

U = UP = 上

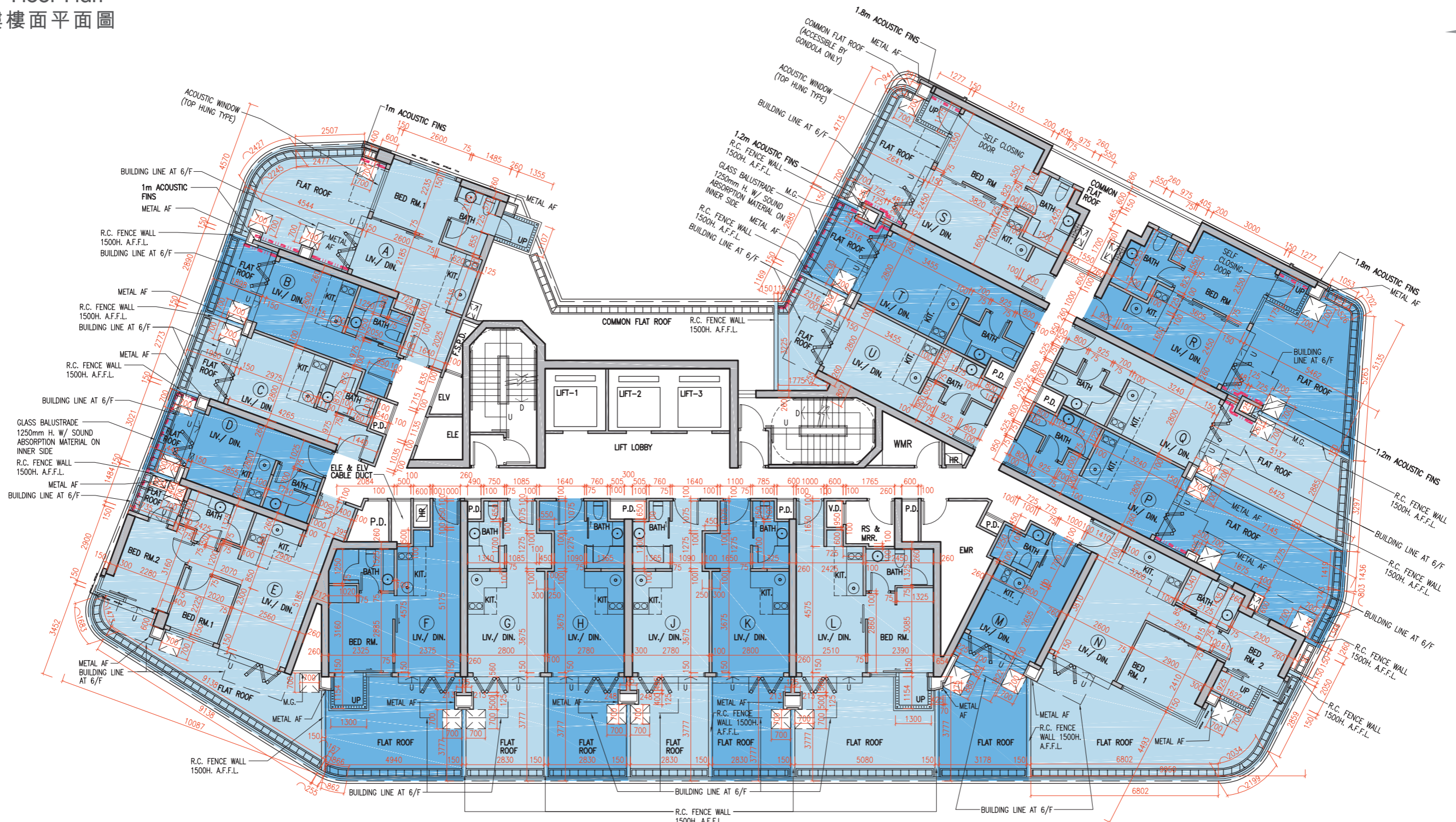
UP = UTILITY PLATFORM = 工作平台

UTIL. = UTILITY ROOM = 工作間

V.D. = VENT DUCT = 風槽

WMR = WATER METER ROOM = 水錶房

5/F Floor Plan
5樓樓面平面圖



 MAINTENANCE SPACE UNDER DEED OF MUTUAL COVENENT 公共契約下的維修空間
 MAINTENANCE WINDOW 維修窗口
 ABSORPTION MATERIAL 吸音物料

比例
 Scale : 0 5M/米

	Floor 樓層	Units 單位																		
		A	B	C	D	E	F	G	H	J	K	L	M	N	P	Q	R	S	T	U
The thickness of the floor slabs (excluding plaster) of each residential property (mm) 每個住宅物業的樓板(不包括灰泥)的厚度(毫米)	5/F 5樓	150, 175	150	150	150	150	150, 175	150	150	150	150	150, 175	150	150	150	150	175	175	150	150
The floor-to-floor height of each residential property (mm) 每個住宅物業的層與層之間的高度(毫米)		3500	3500	3500	3500	3500	3500	3500	3500	3500	3500	3500	3500	3500	3500	3500	3500	3500	3500	3500

1. The internal areas of the residential properties on the upper floors will generally be slightly larger than those on the lower floors because of the reducing thickness of the structural walls on the upper floors.
2. The dimensions in the floor plans are all structural dimensions in millimetre.

1. 因住宅物業的較高樓層的結構牆的厚度遞減，較高樓層的內部面積，一般比較低樓層的內部面積稍大。
2. 樓面平面圖所列之尺寸為以毫米標示之建築結構尺寸。

6/F - 10/F Floor Plan
6樓至10樓樓面平面圖



⊗ ACOUSTIC BALCONY 隔音露台 - - - - - MAINTENANCE WINDOW 維修窗口 - - - - - ABSORPTION MATERIAL 吸音物料

比例
Scale : 0 5M/米

	Floor 樓層	Units 單位																		
		A	B	C	D	E	F	G	H	J	K	L	M	N	P	Q	R	S	T	U
The thickness of the floor slabs (excluding plaster) of each residential property (mm) 每個住宅物業的樓板(不包括灰泥)的厚度(毫米)	6/F - 10F 6樓至10樓	150, 175	150	150	150	150	150, 175	150	150	150	150	150, 175	150	150	150	150	175	175	150	150
The floor-to-floor height of each residential property (mm) 每個住宅物業的層與層之間的高度(毫米)		3500	3500	3500	3500	3500	3500	3500	3500	3500	3500	3500	3500	3500	3500	3500	3500	3500	3500	3500

1. The internal areas of the residential properties on the upper floors will generally be slightly larger than those on the lower floors because of the reducing thickness of the structural walls on the upper floors.
2. The dimensions in the floor plans are all structural dimensions in millimetre.

1. 因住宅物業的較高樓層的結構牆的厚度遞減，較高樓層的內部面積，一般比較低樓層的內部面積稍大。
2. 樓面平面圖所列之尺寸為以毫米標示之建築結構尺寸。

11/F - 23/F (14/F omitted) Floor Plan
11樓至23樓(不設14樓)樓面平面圖



◎ ACOUSTIC BALCONY 隔音露台 - - - - - MAINTENANCE WINDOW 維修窗口 ■■■■■ ABSORPTION MATERIAL 吸音物料

比例
Scale : 0 5M/米

	Floor 樓層	Units 單位																		
		A	B	C	D	E	F	G	H	J	K	L	M	N	P	Q	R	S	T	U
The thickness of the floor slabs (excluding plaster) of each residential property (mm) 每個住宅物業的樓板(不包括灰泥)的厚度(毫米)	11/F - 23/F (14/F omitted) 11樓至23樓 (不設14樓)	150, 175	150	150	150	150	150, 175	150	150	150	150	150, 175	150	150	150	150	175	175	150	150
The floor-to-floor height of each residential property (mm) 每個住宅物業的層與層之間的高度(毫米)		3500	3500	3500	3500	3500	3500	3500	3500	3500	3500	3500	3500	3500	3500	3500	3500	3500	3500	3500

1. The internal areas of the residential properties on the upper floors will generally be slightly larger than those on the lower floors because of the reducing thickness of the structural walls on the upper floors.
2. The dimensions in the floor plans are all structural dimensions in millimetre.

1. 因住宅物業的較高樓層的結構牆的厚度遞減，較高樓層的內部面積，一般比較低樓層的內部面積稍大。
2. 樓面平面圖所列之尺寸為以毫米標示之建築結構尺寸。

25/F Floor Plan
25樓樓面平面圖



MAINTENANCE WINDOW 維修窗口 ABSORPTION MATERIAL 吸音物料

比例
Scale : 0 5M/米

	Floor 樓層	Units 單位																		
		A	B	C	D	E	F	G	H	J	K	L	M	N	P	Q	R	S	T	U
The thickness of the floor slabs (excluding plaster) of each residential property (mm) 每個住宅物業的樓板(不包括灰泥)的厚度(毫米)	25/F 25樓	150, 175	150	150	150	150	150, 250	150	150	150	150	150, 250	150	150, 200	150	150	150	175	150	150
The floor-to-floor height of each residential property (mm) 每個住宅物業的層與層之間的高度(毫米)		3500	3500	3500	3500	3500	3150, 3250, 3350, 3400, 3500, 3600	3150, 3300, 3350, 3500, 3650, 3850	3150, 3350, 3500, 3650, 3700, 3850	3500, 3650, 3850	3500, 3650, 3850	3250, 3400, 3500, 3600	3250, 3500, 3600, 3850	3250, 3500, 3600, 3850	3150, 3300, 3500, 3650, 3850	3150, 3300, 3500, 3650, 3850	3250, 3450, 3500, 3800, 3850	3500	3500	3500

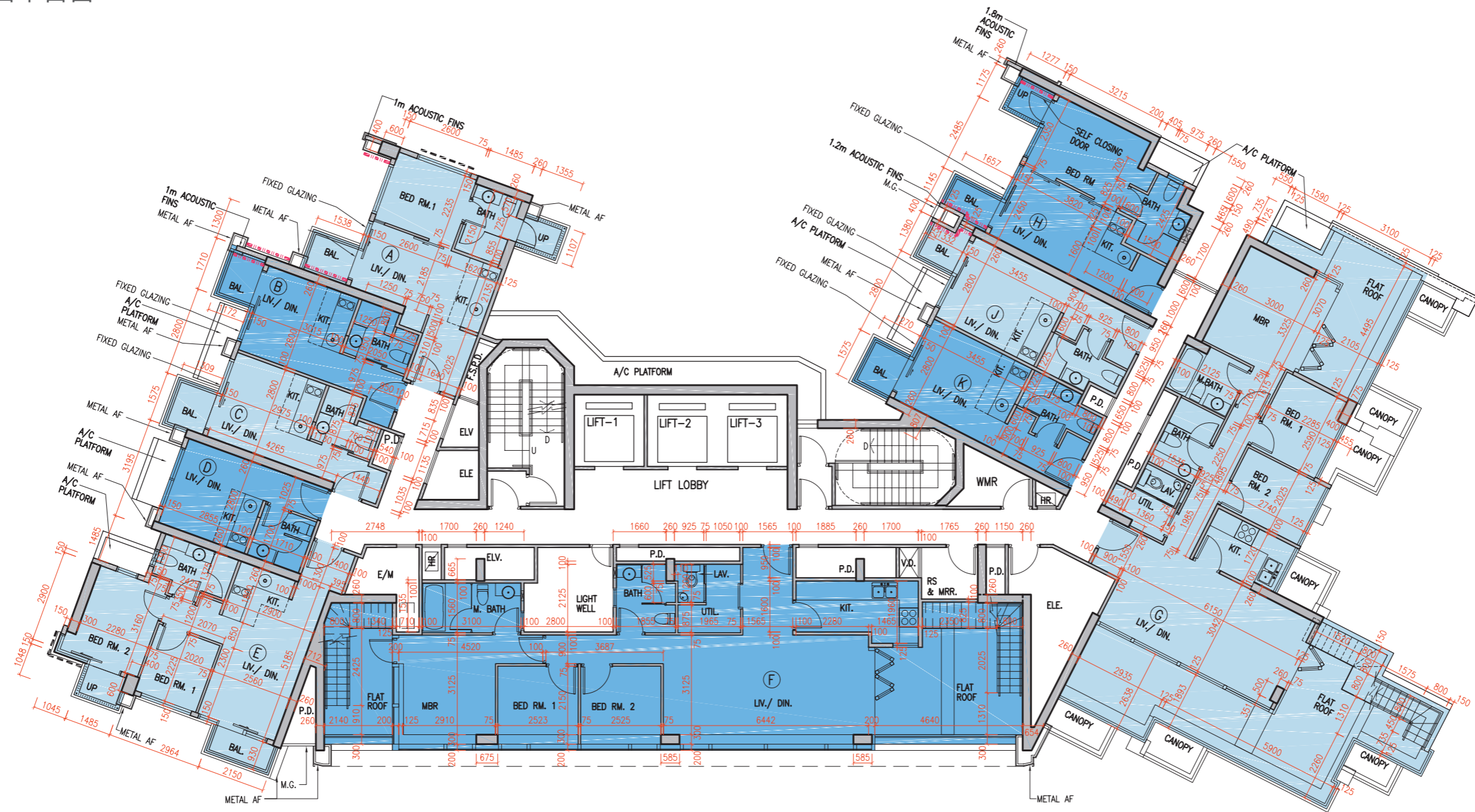
1. The internal areas of the residential properties on the upper floors will generally be slightly larger than those on the lower floors because of the reducing thickness of the structural walls on the upper floors.
2. The dimensions in the floor plans are all structural dimensions in millimetre.

1. 因住宅物業的較高樓層的結構牆的厚度遞減，較高樓層的內部面積，一般比較低樓層的內部面積稍大。
2. 樓面平面圖所列之尺寸為以毫米標示之建築結構尺寸。

11 FLOOR PLANS OF RESIDENTIAL PROPERTIES IN THE DEVELOPMENT

發展項目的住宅物業的樓面平面圖

26/F Floor Plan
26樓樓面平面圖



..... MAINTENANCE WINDOW 維修窗口 - - - - - ABSORPTION MATERIAL 吸音物料

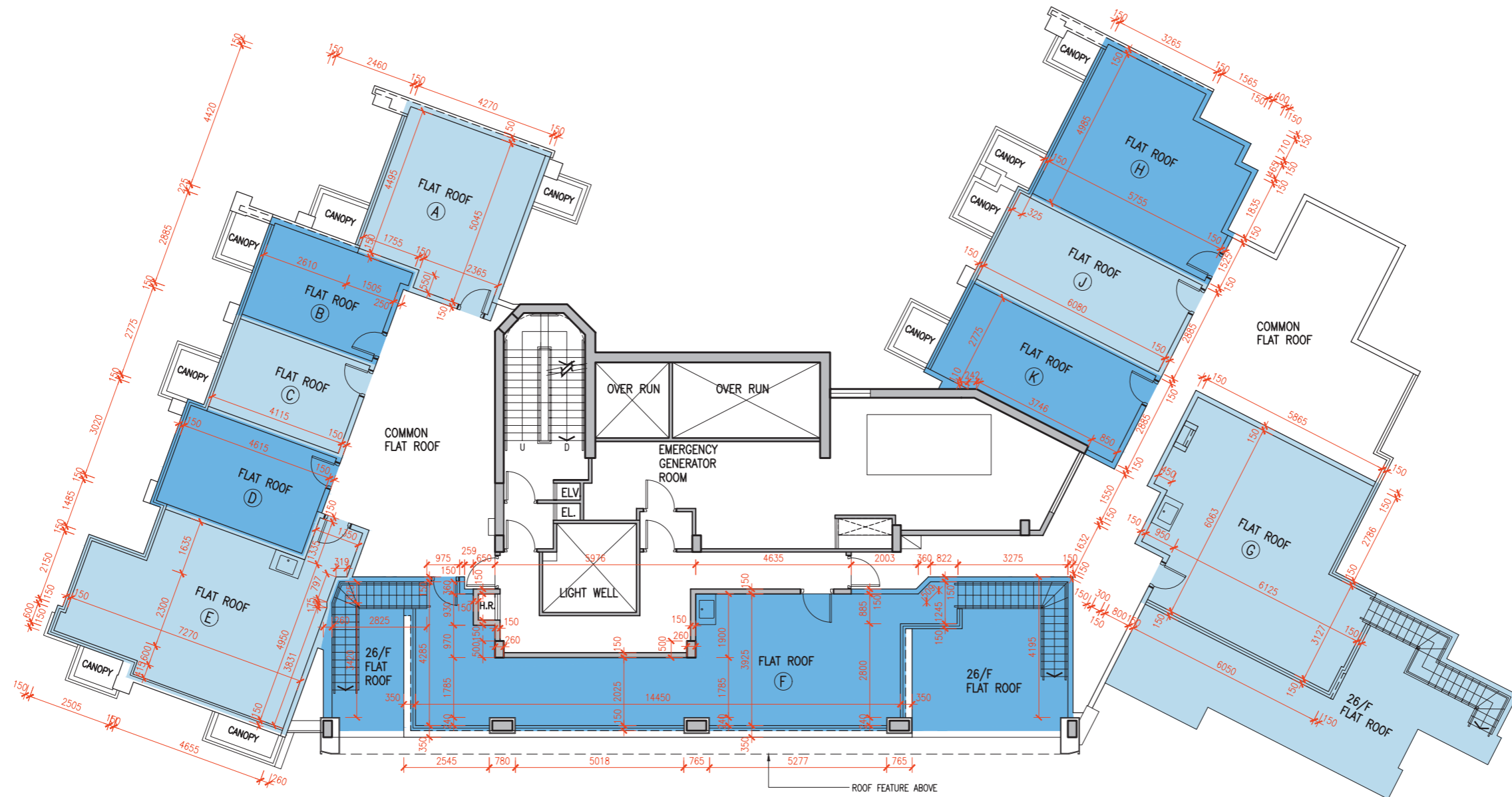
比例
Scale : 0 5M/米

	Floor 樓層	Units 單位									
		A	B	C	D	E	F	G	H	J	K
The thickness of the floor slabs (excluding plaster) of each residential property (mm) 每個住宅物業的樓板(不包括灰泥)的厚度(毫米)	26/F 26樓	150, 175	150	150	150	150, 300	150, 175	150	175	150	150
The floor-to-floor height of each residential property (mm) 每個住宅物業的層與層之間的高度(毫米)		4000, 4150, 4350	4000, 4350	4000, 4350	4000, 4350	4000, 4150, 4350	4000, 4150, 4350, 4450, 4650	4000, 4150, 4200, 4350	4000, 4350	4000, 4150, 4350	4000, 4150, 4350

1. The internal areas of the residential properties on the upper floors will generally be slightly larger than those on the lower floors because of the reducing thickness of the structural walls on the upper floors.
2. The dimensions in the floor plans are all structural dimensions in millimetre.

1. 因住宅物業的較高樓層的結構牆的厚度遞減，較高樓層的內部面積，一般比較低樓層的內部面積稍大。
2. 樓面平面圖所列之尺寸為以毫米標示之建築結構尺寸。

Roof Floor Plan
天台樓面平面圖



比例
Scale : 0 5M/米

	Floor 樓層	Units 單位									
		A	B	C	D	E	F	G	H	J	K
The thickness of the floor slabs (excluding plaster) of each residential property (mm) 每個住宅物業的樓板(不包括灰泥)的厚度(毫米)	Roof 天台	Not Applicable 不適用									
The floor-to-floor height of each residential property (mm) 每個住宅物業的層與層之間的高度(毫米)											

1. The internal areas of the residential properties on the upper floors will generally be slightly larger than those on the lower floors because of the reducing thickness of the structural walls on the upper floors.
2. The dimensions in the floor plans are all structural dimensions in millimetre.

1. 因住宅物業的較高樓層的結構牆的厚度遞減，較高樓層的內部面積，一般比較低樓層的內部面積稍大。
2. 樓面平面圖所列之尺寸為以毫米標示之建築結構尺寸。