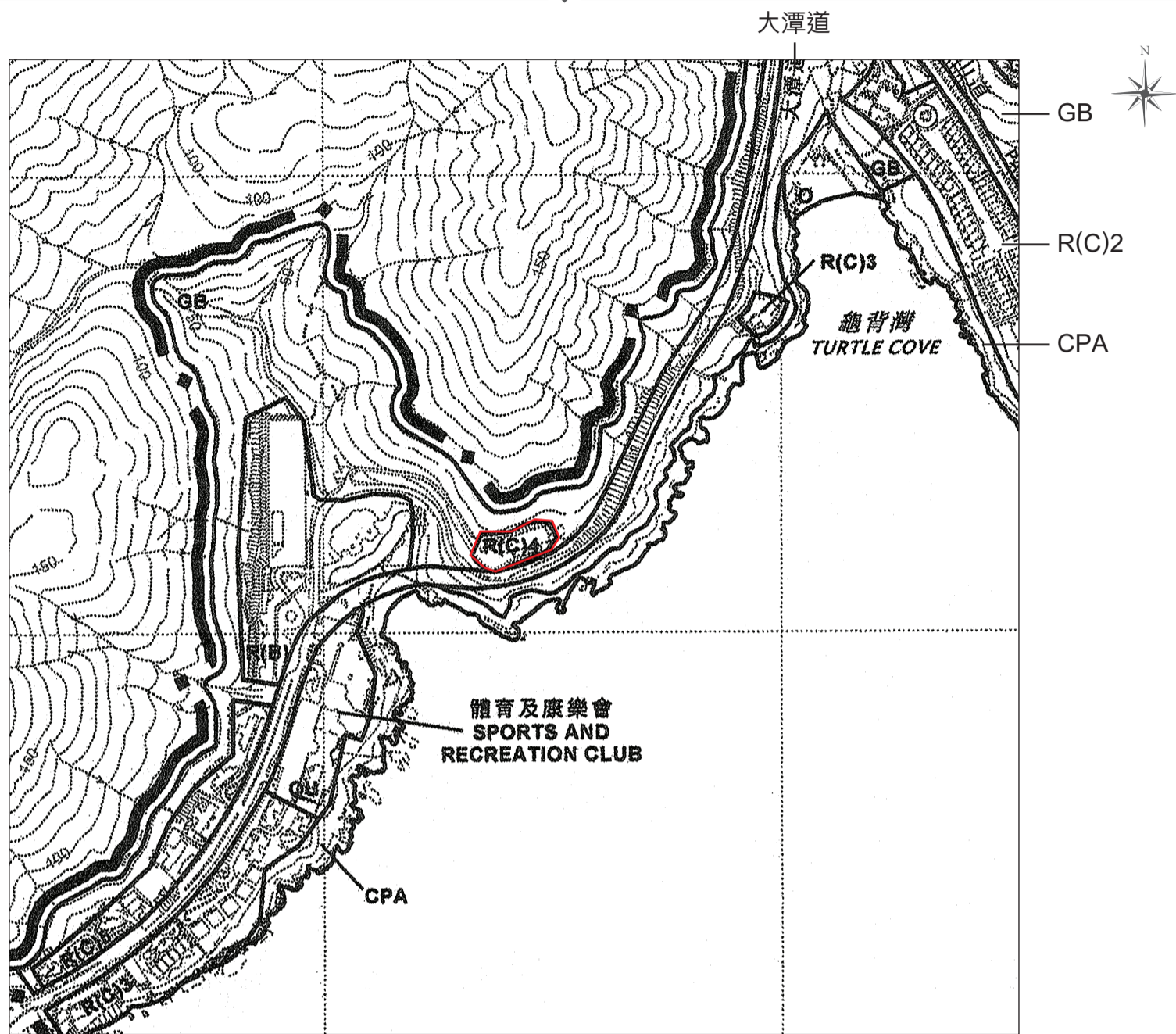


OUTLINE ZONING PLAN RELATING TO THE DEVELOPMENT
 關乎發展項目的分區計劃大綱圖



Location of the Development 發展項目的位置
 Scale: 0 100 200 300 400 500 metres 米
 比例: 0 100 200 300 400 500

NOTATION 圖例

Zones 地帶

R(B)	Residential (Group B) 住宅 (乙類)
R(C)	Residential (Group C) 住宅 (丙類)
O	Open Space 休憩用地

OU	Other Specified Uses 其他指定用途
GB	Green Belt 綠化地帶
CPA	Coastal Protection Area 海岸保護區

Communications 交通

Major Road and Junction
 主要道路及路口

Miscellaneous 其他

Boundary of Planning Scheme
 規劃範圍界線

The above Outline Zoning Plan is reproduced with the permission of the Director of Lands. © The Government of Hong Kong SAR.

Extracted from part of the approved Tai Tam & Shek O Outline Zoning Plan, Plan No. S/H18/10, gazetted on 16 May 2008, with adjustments to show the Development boundary and other information in red.

Notes:

1. The last updated Outline Zoning Plan and the attached schedule as at the date of printing of the sales brochure are available for free inspection at the sales office during opening hours.
2. The Vendor advises prospective purchasers to conduct an on-site visit for a better understanding of the development site, its surrounding environment and the public facilities nearby.
3. The above Outline Zoning Plan may show more than the area required under the Residential Properties (First-hand Sales) Ordinance due to the technical reason that the boundary of the Development is irregular.

分區計劃大綱圖版權屬香港特別行政區政府，經地政總署准許複印。

摘錄自2008年5月16日刊憲之大潭及石澳分區計劃大綱核准圖，圖則編號為S/H18/10，經處理以紅色顯示發展項目邊界及其他資料。

附註：

1. 在印刷售樓說明書當日所適用的最近期分區計劃大綱圖及其附表，可於售樓處開放時間內免費查閱。
2. 賣方建議準買方到有關發展地盤作實地考察，以對該發展地盤、其周邊地區環境及附近的公共設施有較佳了解。
3. 由於發展項目的邊界不規則的技術原因，上述分區計劃大綱圖所顯示的範圍可能超過《一手住宅物業銷售條例》所要求顯示的範圍。