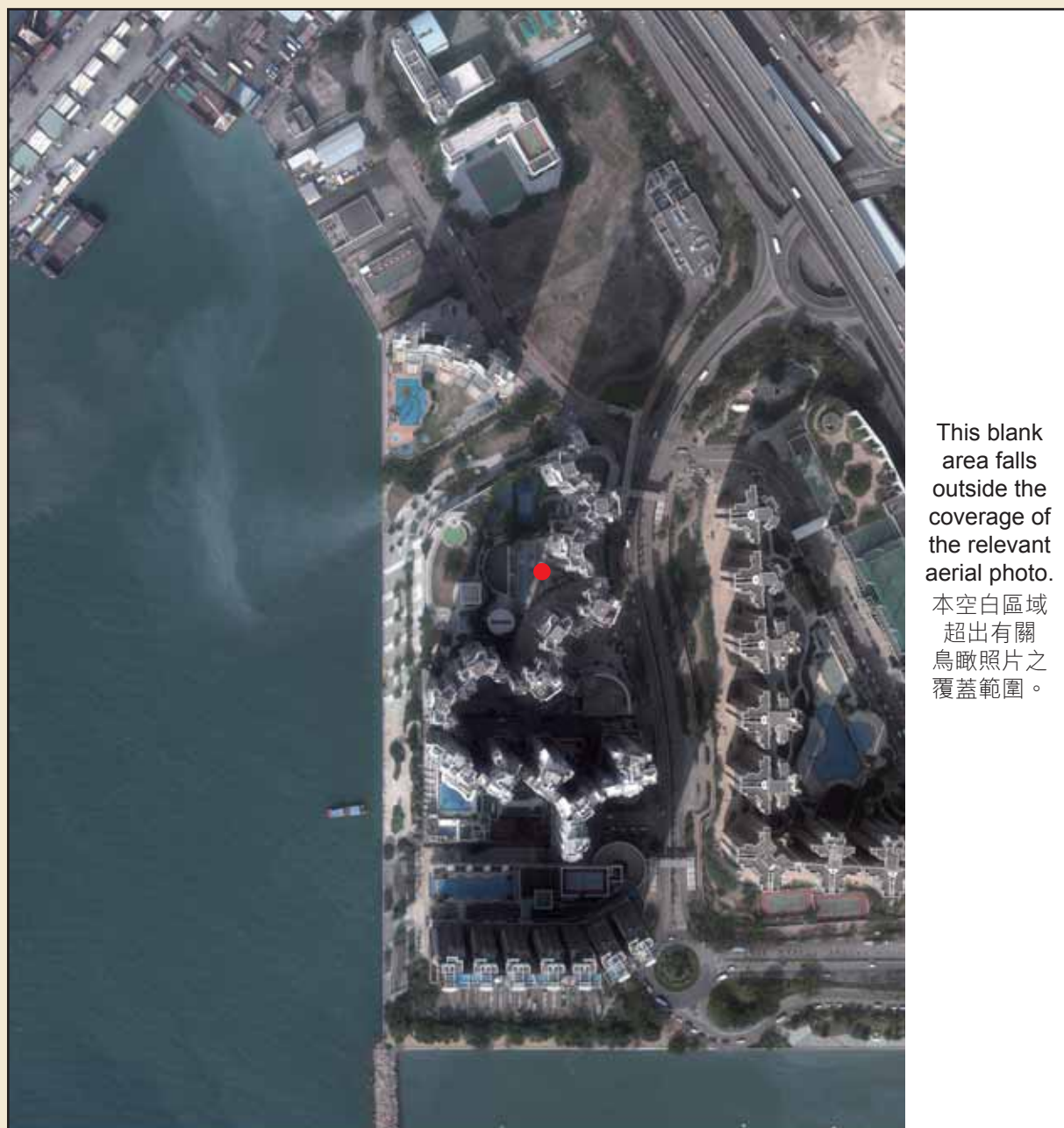
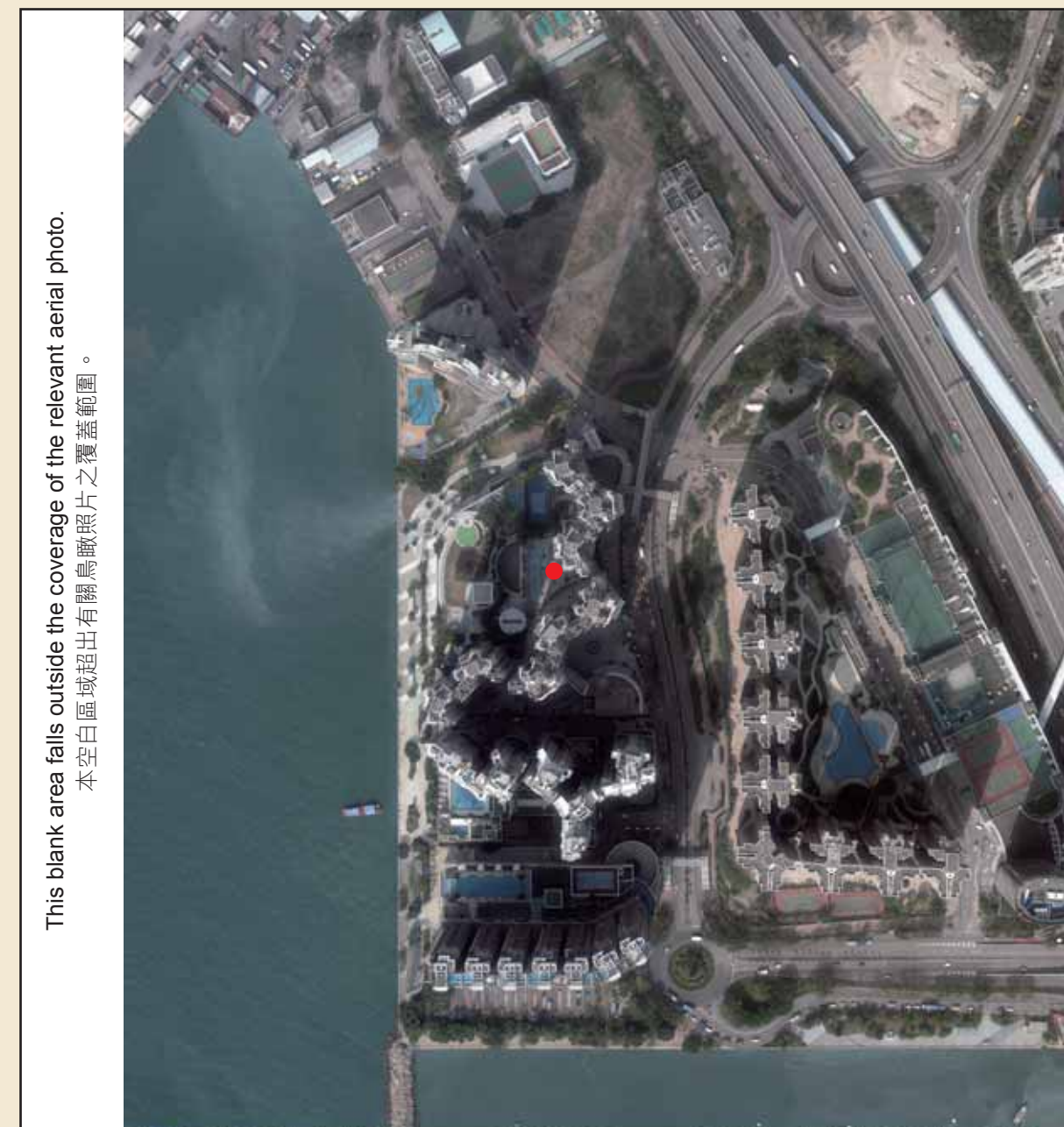


AERIAL PHOTOGRAPH OF THE DEVELOPMENT

發展項目的鳥瞰照片



This blank area falls outside the coverage of the relevant aerial photo.
本空白區域超出有關鳥瞰照片之覆蓋範圍。



This blank area falls outside the coverage of the relevant aerial photo.
本空白區域超出有關鳥瞰照片之覆蓋範圍。

Adopted from part of the aerial photograph taken by the Survey and Mapping Office of Lands Department at a flying height 6,900 feet, Photo No. E054136C (Date of Flight: 23 Jan 2019)

摘錄自地政總署測繪處於 2019 年 1 月 23 日在 6,900 呎飛行高度之鳥瞰照片，編號為 E054136C。

● Location of the Development 發展項目的位置

Notes:

1. The Vendor advises purchasers to conduct on-site visit for a better understanding of the Development, its surrounding environment and public facilities nearby.
2. Survey and Mapping Office, Lands Department, The Government of HKSAR © copyright reserved - reproduction by permission only.
3. The aerial photographs may show more than the area required under the Residential Properties (First-hand Sales) Ordinance due to the technical reason that the boundary of the Development is irregular.

Adopted from part of the aerial photograph taken by the Survey and Mapping Office of Lands Department at a flying height 6,900 feet, Photo No. E054135C (Date of Flight: 23 Jan 2019)

摘錄自地政總署測繪處於 2019 年 1 月 23 日在 6,900 呎飛行高度之鳥瞰照片，編號為 E054135C。

● Location of the Development 發展項目的位置

附註：

1. 賣方建議買方到該發展項目作實地考察，以獲得該發展項目及周邊地區的環境及公共設施較佳的了解。
2. 香港特別行政區政府地政總署測繪處版權所有，未經許可，不得翻印。
3. 由於發展項目的邊界不規則的技術原因，以上鳥瞰照片可能顯示多於《一手住宅物業銷售條例》所要求顯示的範圍。