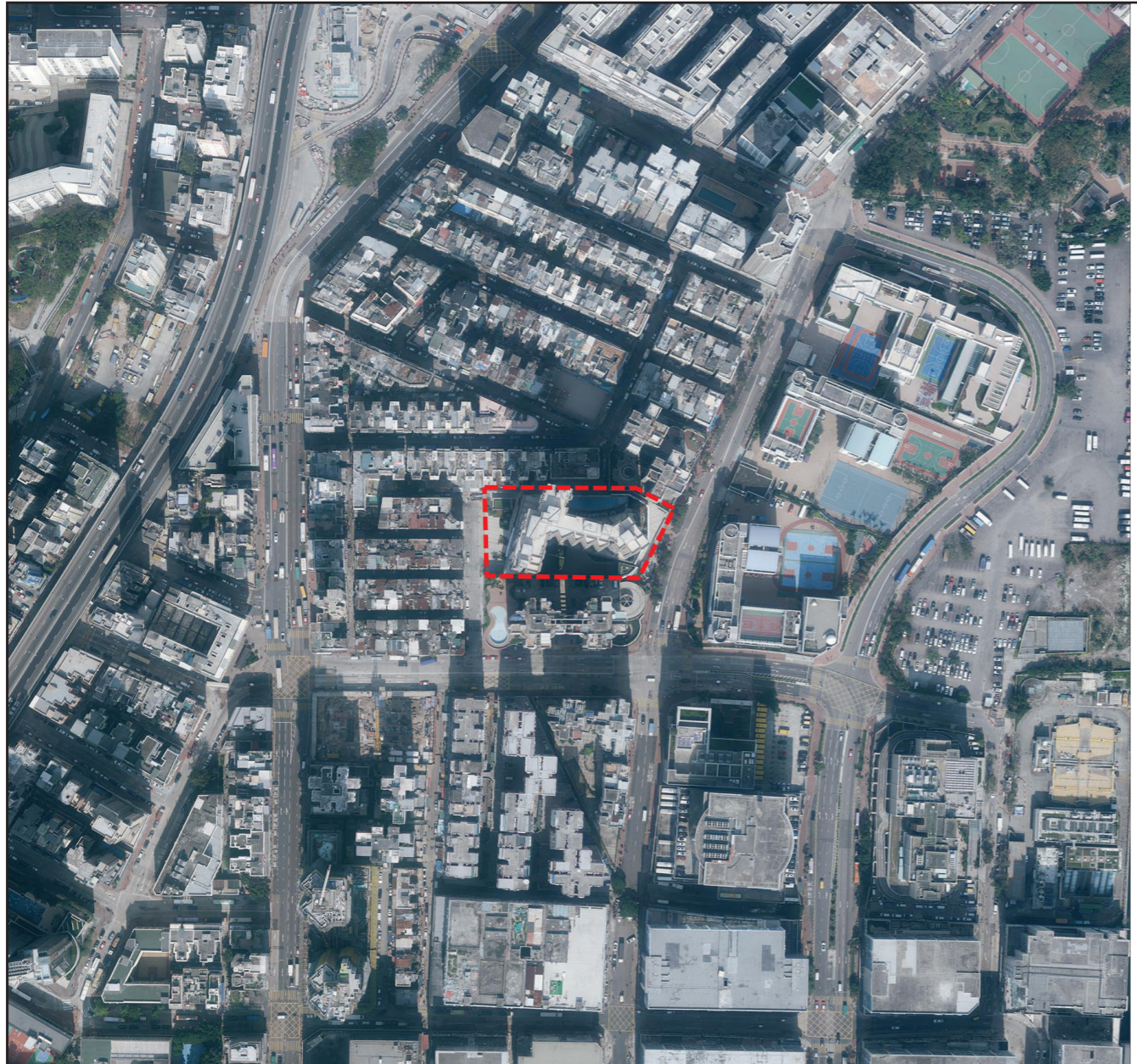


AERIAL PHOTOGRAPH OF THE DEVELOPMENT

發展項目的鳥瞰照片

This blank area falls outside the coverage of the aerial photograph.
此空白範圍不為本鳥瞰照片所覆蓋。



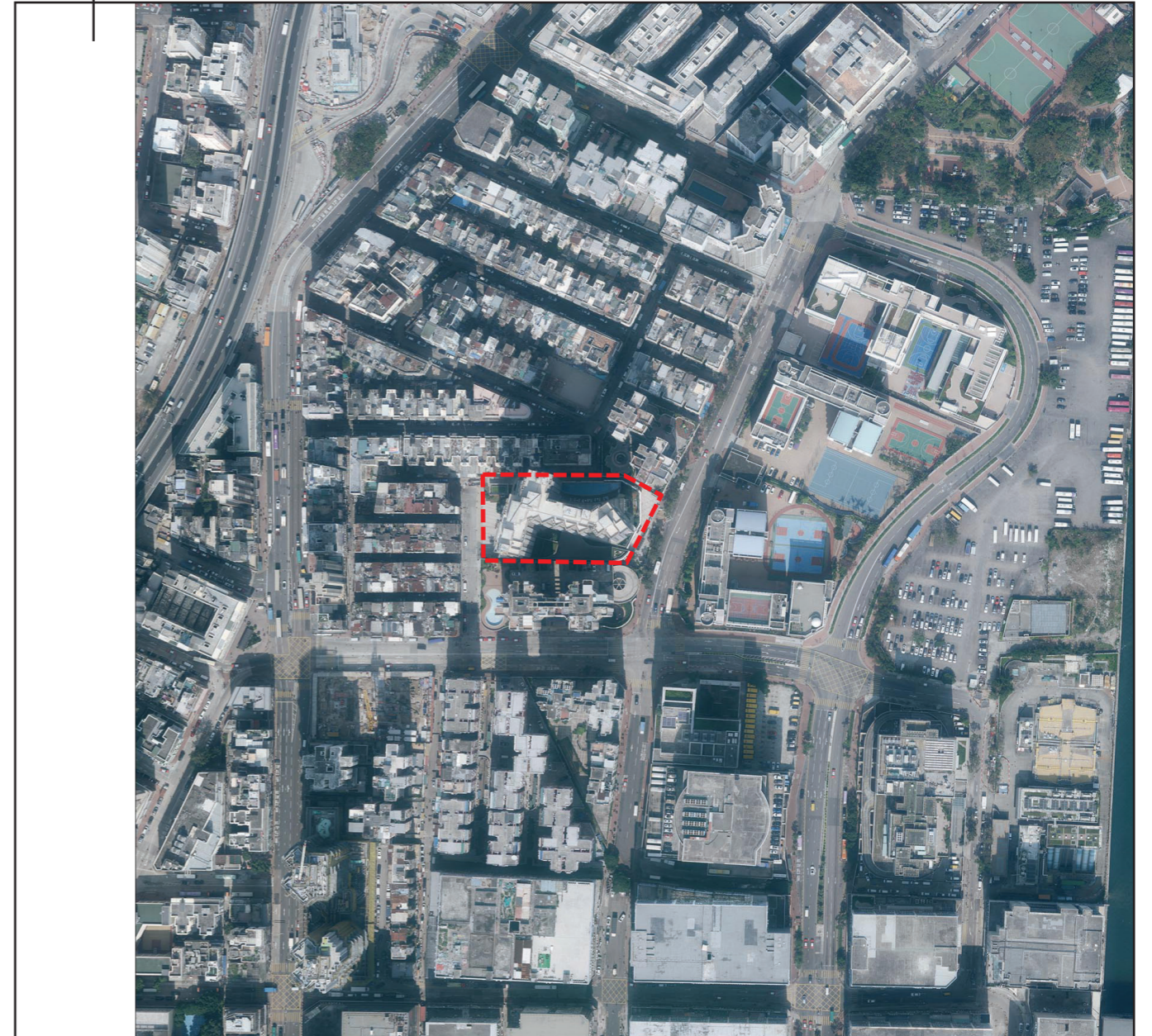
--- Boundary of the Development
發展項目的邊界

Adopted from part of the aerial photograph taken by the Survey and Mapping Office of Lands Department at a flying height of 6,900 feet, Photo No. E053187C, dated 23rd January 2019.
摘錄自地政總署測繪處於2019年1月23日在6,900呎飛行高度拍攝之鳥瞰照片之部份，編號為E053187C。

Remarks:

1. The above two Aerial Photographs have shown the area more than that required under the Residential Properties (First-hand Sales) Ordinance due to the technical reasons (such as the shape of the Development).
2. Survey and Mapping Office, Lands Department, The Government of HKSAR © Copyright reserved – reproduction by permission only.

This blank area falls outside the coverage of the aerial photograph.
此空白範圍不為本鳥瞰照片所覆蓋。



--- Boundary of the Development
發展項目的邊界

Adopted from part of the aerial photograph taken by the Survey and Mapping Office of Lands Department at a flying height of 6,900 feet, Photo No. E053188C, dated 23rd January 2019.
摘錄自地政總署測繪處於2019年1月23日在6,900呎飛行高度拍攝之鳥瞰照片之部份，編號為E053188C。

備註:

1. 由於技術原因 (例如發展項目之形狀)，上述兩張鳥瞰照片所顯示的範圍多於《一手住宅物業銷售條例》要求顯示的範圍。
2. 香港特別行政區政府地政總署測繪處©版權所有，未經許可，不可複製。