



**FLOOR PLANS OF RESIDENTIAL PROPERTIES IN THE DEVELOPMENT**  
**發展項目的住宅物業的樓面平面圖**

## FLOOR PLANS OF RESIDENTIAL PROPERTIES IN THE DEVELOPMENT 發展項目的住宅物業的樓面平面圖

### Legend of Terms and Abbreviations used on Floor Plans:

樓面平面圖中所使用名詞及簡稱之圖例:

A/C PLATFORM	= AIR CONDITIONER PLATFORM 冷氣機平台	FLUSHING WATER TANK AND PUMP RM. & CLEANING WATER TANK & PUMP RM.	FLUSHING WATER TANK AND PUMP ROOM & CLEANING WATER TANK & PUMP ROOM 沖廁水缸及泵房及清潔水缸及泵房
A/C PLATFORM ABOVE	= AIR CONDITIONER PLATFORM ABOVE 冷氣機平台置上	H.R.	= HOSE REEL 消防喉轆
A.D.	= AIR DUCT 風管槽	LIFT LOBBY	= 升降機大堂
A.F.	= ARCHITECTURAL FEATURE 建築裝飾	LIFT OVERRUN	= 升降機槽頂部
A.F. ABOVE AT 28/F	= ARCHITECTURAL FEATURE ABOVE AT 28/F 上有 28 樓建築裝飾	LIV./DIN.	= LIVING ROOM / DINING ROOM 客廳/飯廳
A.F. ABOVE AT ROOF	= ARCHITECTURAL FEATURE ABOVE AT ROOF 上有天台建築裝飾	M.BATH	= MASTER BATHROOM 主人浴室
ALUM. A.F. AT SPANDREL AREA	= ALUMINUM ARCHITECTURAL FEATURE AT SPANDREL AREA 於拱肩部分之鋁建築裝飾	M.BR	= MASTER BEDROOM 主人睡房
ALUM. A.F. BELOW	= ALUMINUM ARCHITECTURAL FEATURE BELOW 鋁建築裝飾置下	OPEN KIT.	= OPEN KITCHEN 開放式廚房
BAL.	= BALCONY 露台	P.D.	= PIPE DUCT 管道槽
BALCONY ABOVE	= 露台置上	PLANTER	= 花槽
BATH	= BATHROOM 浴室	R.S.M.R.R.	= REFUSE STORAGE AND MATERIAL RECOVERY ROOM 垃圾及物料回收房
BATH 2	= BATHROOM 2 浴室 2	ROOF	= 天台
BR.1	= BEDROOM 1 睡房 1	S	= STOVE 爐頭
BR.2	= BEDROOM 2 睡房 2	SERVICE CORRIDOR	= 後勤通道
C.L.	= CAT LADDER 爬梯	STAIRHOOD	= 梯屋
COMMON AREA	= 公共地方	STO.	= STORE ROOM 儲物房
DN	= DOWN 落	TOP OF BAL.	= TOP OF BALCONY 露台上蓋
E.D.	= ELECTRICAL DUCT 電線槽	TOP OF U.P.	= TOP OF UTILITY PLATFORM 工作平台上蓋
E.L.V.	= EXTRA-LOW VOLTAGE ELECTRICAL DUCT 低壓電線槽	UP	= 上
E.M.R.	= ELECTRIC METER ROOM 電錶房	U.P.	= UTILITY PLATFORM 工作平台
FAN ROOM	= 風扇房	WATER TANK	= 水缸
FLAT ROOF	= 平台	W.M.C.	= WATER METER CABINET 水錶箱
FLAT ROOF (COMMON AREA)	= 公共平台		

#### REMARKS:

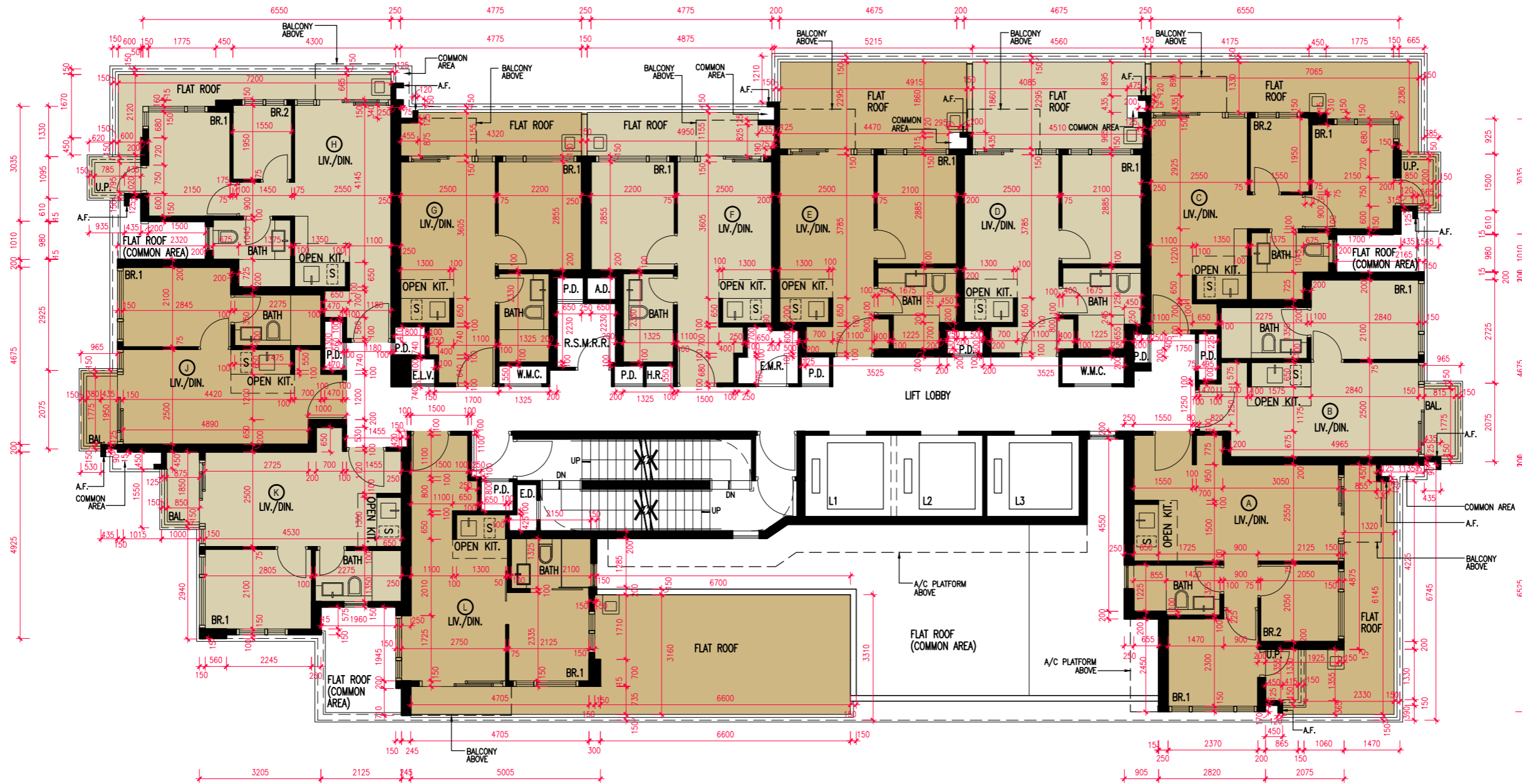
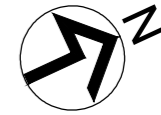
- There may be architectural features and/or exposed pipes on external walls of some floors.
- Common pipes exposed and/or enclosed in cladding are located at/adjacent to Balcony and/or Flat Roof and/or air-conditioning platform and/or external wall of some units. Air-conditioning platform(s) and external walls are common areas under the latest draft Deed of Mutual Covenant of the Development.
- There are ceiling bulkheads at Living Room / Dining Room, Bedrooms, Store Rooms, and Open Kitchen of some units for the air-conditioning system and/or Mechanical and Electrical services.
- The internal ceiling height within some units may vary due to structural, architectural and/or decoration design variations.
- Symbols of fittings and fitments shown on the floor plans, such as sink, water closets, shower, sink counter, etc, are retrieved from the latest approved building plans and are for general indication only.
- Balconies and Utility Platforms are non-enclosed area.
- Dotted line in a residential unit with Open Kitchen delineates the extent of Open Kitchen area.

#### 附註:

- 部分樓層外牆設有建築裝飾及/或外露喉管。
- 部分單位的露台及/或平台及/或冷氣機平台及/或外牆設有外露及/或內藏的公用喉管。根據發展項目的公契的最新擬稿，冷氣機平台及外牆為公用地方。
- 部分單位客廳/飯廳、睡房、儲物房及開放式廚房之假天花內裝置有冷氣及/或其他機電設備。
- 部分單位之天花高度將會因應結構、建築設計及/或裝修設計上的需要而有差異。
- 平面圖上所顯示的形象裝置符號，例如洗滌盆、坐廁、花灑、洗滌盆櫃等乃擇自最新的經批准的建築圖則，只作一般性標誌。
- 露台及工作平台為不可封閉的地方。
- 開放式廚房的住宅單位內所顯示的虛線代表開放式廚房範圍。

# FLOOR PLANS OF RESIDENTIAL PROPERTIES IN THE DEVELOPMENT 發展項目的住宅物業的樓面平面圖

5/F FLOOR PLAN  
5樓平面圖



Scale 比例 : 0 2 4M(米)

## FLOOR PLANS OF RESIDENTIAL PROPERTIES IN THE DEVELOPMENT 發展項目的住宅物業的樓面平面圖

### 5/F 5樓

EACH RESIDENTIAL PROPERTY 每個住宅物業	Flat 單位										
	A	B	C	D	E	F	G	H	J	K	L
The thickness of the floor slabs (excluding plaster) of each residential property (mm) 每個住宅物業的樓板（不包括灰泥）的厚度（毫米）	150, 175	150, 175	150	150	150	150, 175	150, 175	150, 175	150, 175	150	150, 175
The floor-to-floor height of each residential property (mm) 每個住宅物業的層與層之間的高度（毫米）	3150, 3250, 3625	3150, 3250, 3500, 3600, 3625, 3700	2875, 3150, 3625	2875, 3150, 3225, 3250, 3625	2875, 3150, 3225, 3250, 3625	3150, 3250, 3500, 3600	3150, 3250, 3500, 3600, 3625, 3700	3150, 3500, 3625	3150, 3250, 3500, 3600, 3625, 3700	2875, 3150, 3225, 3250	2700, 2900, 3075, 3150, 3250

The internal areas of the residential properties on the upper floors will generally be slightly larger than those on the lower floors because of the reducing thickness of the structural walls on the upper floors. This situation and section 10(2)(e) of Part 1 of Schedule 1 to the Residential Properties (First-hand Sales) Ordinance is not applicable for this Development.

#### Remarks:

- The dimensions of floor plans are all structural dimensions in millimetre.
- Please refer to Page AL1 of this Sales Brochure for legend of the terms and abbreviations shown in and remarks applicable to the floor plan.
- Unit I is omitted.

因住宅物業的較高樓層的結構牆的厚度遞減，較高樓層的內部面積，一般比較低樓層的內部面積稍大。此情況及《一手住宅物業銷售條例》附表 1 第 1 部第 10(2)(e) 條不適用於此發展項目。

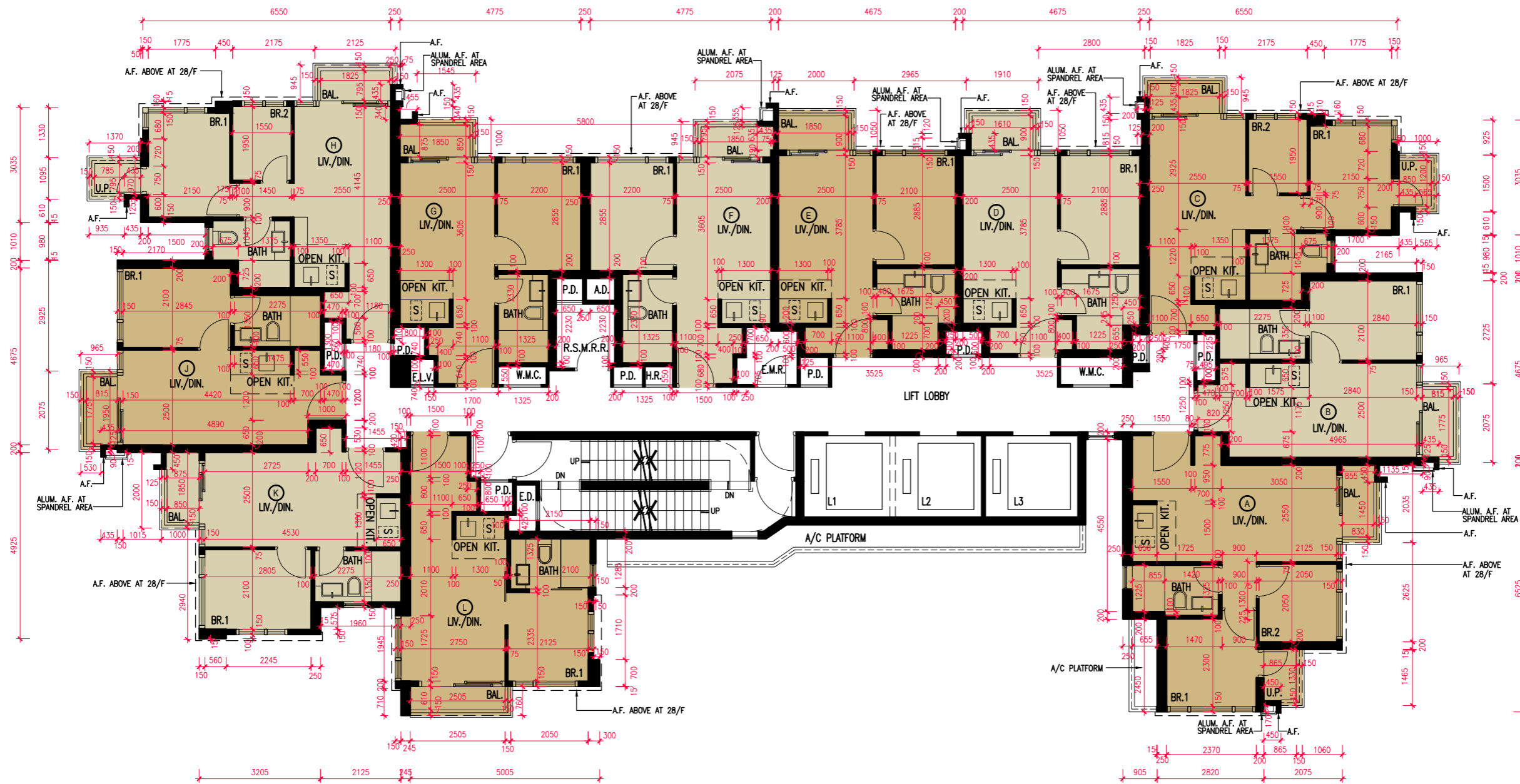
#### 備註:

- 樓面平面圖所列之尺寸數字為以毫米標示的建築結構尺寸。
- 有關樓面平面圖中顯示之名詞及簡稱之圖例及通用之附註請參閱本售樓說明書第 AL1 頁。
- 不設單位 I。

# FLOOR PLANS OF RESIDENTIAL PROPERTIES IN THE DEVELOPMENT 發展項目的住宅物業的樓面平面圖

6/F-12/F, 15/F-23/F & 25/F-27/F PLAN

6樓至12樓、15樓至23樓及25樓至27樓平面圖



Scale 比例 : 4M(米)

## FLOOR PLANS OF RESIDENTIAL PROPERTIES IN THE DEVELOPMENT 發展項目的住宅物業的樓面平面圖

6/F - 12/F, 15/F - 23/F & 25/F - 27/F 6樓至12樓、15樓至23樓及25樓至27樓

EACH RESIDENTIAL PROPERTY 每個住宅物業	Floor 樓層	Flat 單位										
		A	B	C	D	E	F	G	H	J	K	L
The thickness of the floor slabs (excluding plaster) of each residential property (mm) 每個住宅物業的樓板（不包括灰泥） 的厚度（毫米）	6/F-12/F,15/F-23/F & 25/F-26/F 6樓至12樓、15樓至23樓 及25樓至26樓	150, 175	150, 175	150	150	150	150, 175	150, 175	150, 175	150, 175	150	150, 175
	27/F 27樓	150, 175	150, 175	150	150	150	150, 175	150, 175	150, 175	150, 175	150	150, 175
The floor-to-floor height of each residential property (mm) 每個住宅物業的層與層 之間的高度（毫米）	6/F-12/F,15/F-23/F & 25/F-26/F 6樓至12樓、15樓至23樓 及25樓至26樓	3150	3150	3150	3150	3150	3150	3150	3150	3150	3150	3150
	27/F 27樓	2875, 2950, 3075, 3250, 3325, 3500, 3575, 3700, 3775	2850, 2875, 2975, 3125, 3225, 3250, 3325, 3400, 3575, 3775	3150, 3325, 3400, 3675	2975, 3050, 3325, 3675	2875, 2975, 3050, 3075, 3125, 3225, 3250, 3325, 3600, 3675	2975, 3325, 3575, 3775	3075, 3150, 3325, 3525, 3575	2975, 3325, 3400	3075, 3325	3325, 3425, 3500, 3575	3075, 3250, 3325, 3575

The internal areas of the residential properties on the upper floors will generally be slightly larger than those on the lower floors because of the reducing thickness of the structural walls on the upper floors. This situation and section 10(2)(e) of Part 1 of Schedule 1 to the Residential Properties (First-hand Sales) Ordinance is not applicable for this Development.

**Remarks:**

- The dimensions of floor plans are all structural dimensions in millimetre.
- Please refer to Page AL1 of this Sales Brochure for legend of the terms and abbreviations shown in and remarks applicable to the floor plan.
- Unit I is omitted.

因住宅物業的較高樓層的結構牆的厚度遞減，較高樓層的內部面積，一般比較低樓層的內部面積稍大。此情況及《一手住宅物業銷售條例》附表1第1部第10(2)(e)條不適用於此發展項目。

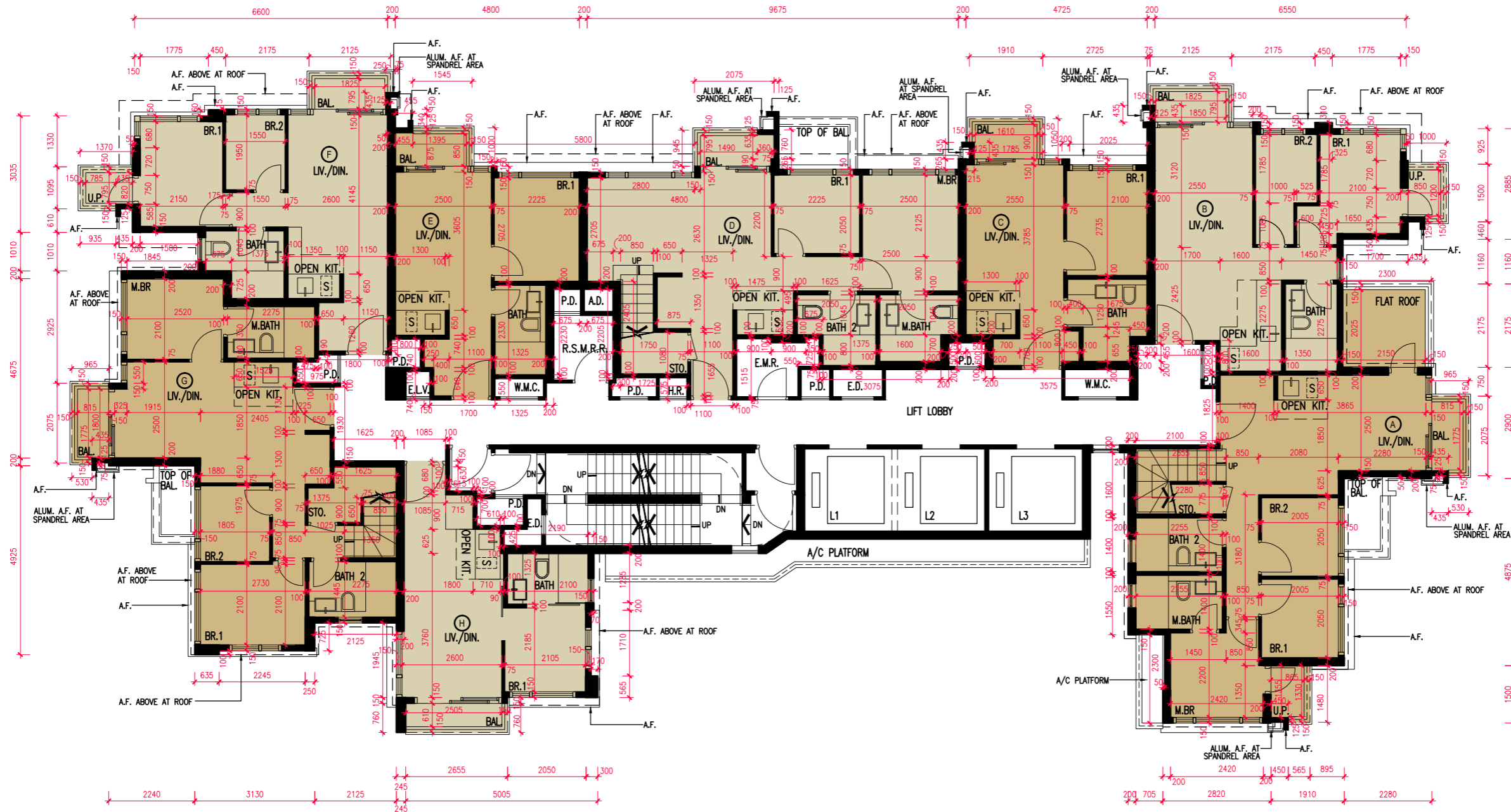
**備註:**

- 樓面平面圖所列之尺寸數字為以毫米標示的建築結構尺寸。
- 有關樓面平面圖中顯示之名詞及簡稱之圖例及通用之附註請參閱本售樓說明書第AL1頁。
- 不設單位I。



# FLOOR PLANS OF RESIDENTIAL PROPERTIES IN THE DEVELOPMENT 發展項目的住宅物業的樓面平面圖

28/F PLAN  
28樓平面圖



Scale 比例 : 0 2 4M(米)

## FLOOR PLANS OF RESIDENTIAL PROPERTIES IN THE DEVELOPMENT 發展項目的住宅物業的樓面平面圖

28/F 28 樓

EACH RESIDENTIAL PROPERTY 每個住宅物業	Flat 單位							
	A	B	C	D	E	F	G	H
The thickness of the floor slabs (excluding plaster) of each residential property (mm) 每個住宅物業的樓板（不包括灰泥）的厚度（毫米）	175	175, 325	175	175	175	175	175	175
The floor-to-floor height of each residential property (mm) 每個住宅物業的層與層之間的高度（毫米）	3500, 3575, 3750, 3850, 3950	3500, 3575, 3750, 3950, 4050	3500, 3575, 3750, 3850	2950, 3050, 3125, 3150, 3225, 3400, 3500, 3575, 3750, 3850, 3950	3050, 3150, 3400, 3500, 3750, 3950	3500, 3575, 3850	3150, 3500, 3575, 3750, 3850, 3950	3500, 3575, 3750, 3950

The internal areas of the residential properties on the upper floors will generally be slightly larger than those on the lower floors because of the reducing thickness of the structural walls on the upper floors. This situation and section 10(2)(e) of Part 1 of Schedule 1 to the Residential Properties (First-hand Sales) Ordinance is not applicable for this Development.

因住宅物業的較高樓層的結構牆的厚度遞減，較高樓層的內部面積，一般比較低樓層的內部面積稍大。此情況及《一手住宅物業銷售條例》附表 1 第 1 部第 10(2)(e) 條不適用於此發展項目。

Remarks:

- The dimensions of floor plans are all structural dimensions in millimetre.
- Please refer to Page AL1 of this Sales Brochure for legend of the terms and abbreviations shown in and remarks applicable to the floor plan.

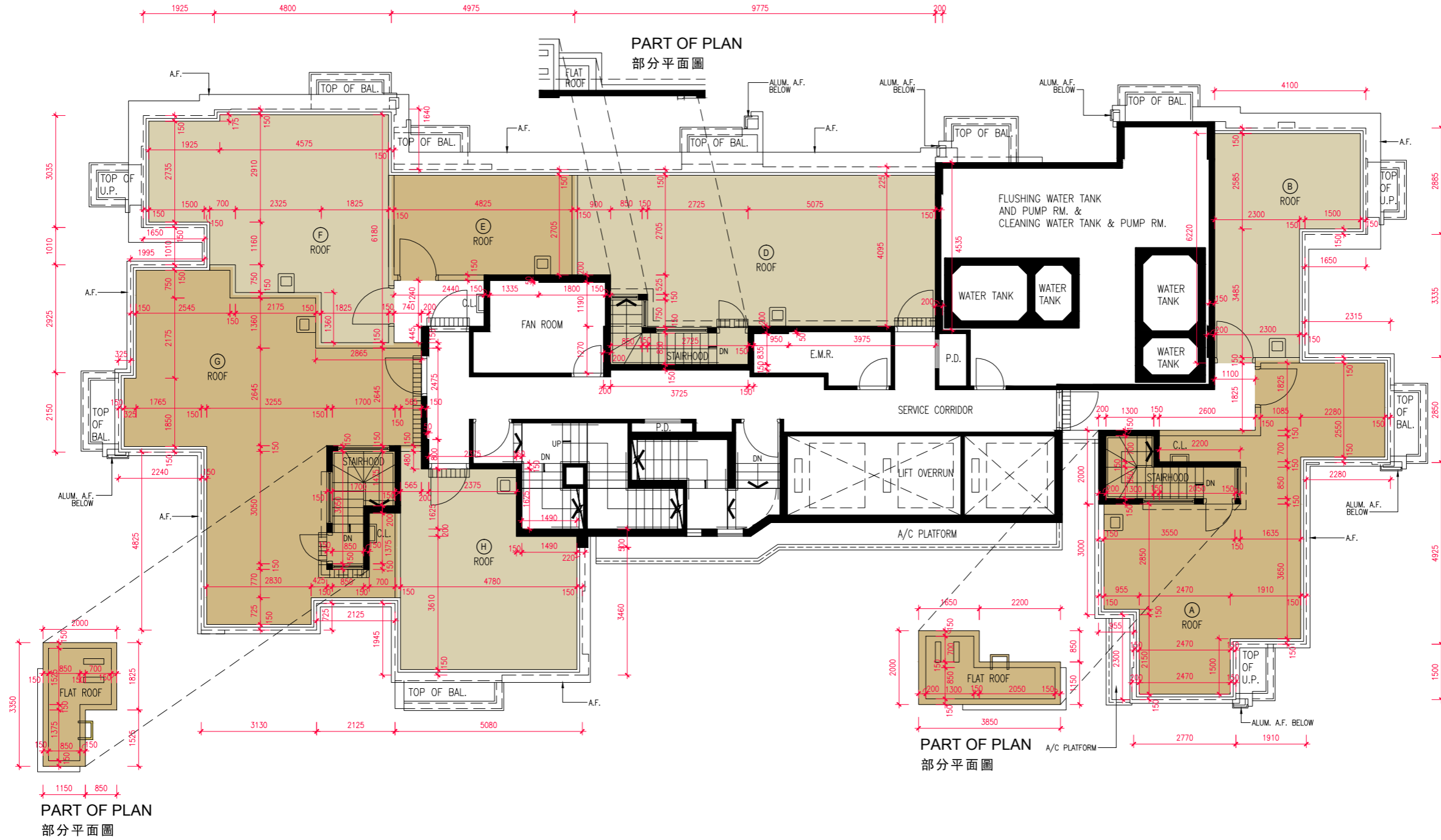
備註:

- 樓面平面圖所列之尺寸數字為以毫米標示的建築結構尺寸。
- 有關樓面平面圖中顯示之名詞及簡稱之圖例及通用之附註請參閱本售樓說明書第 AL1 頁。



# FLOOR PLANS OF RESIDENTIAL PROPERTIES IN THE DEVELOPMENT 發展項目的住宅物業的樓面平面圖

ROOF PLAN  
天台平面圖



Scale 比例 : 0 2 4M(米)

## FLOOR PLANS OF RESIDENTIAL PROPERTIES IN THE DEVELOPMENT 發展項目的住宅物業的樓面平面圖

### ROOF 天台

EACH RESIDENTIAL PROPERTY 每個住宅物業	Flat 單位						
	A	B	D	E	F	G	H
The thickness of the floor slabs (excluding plaster) of each residential property (mm) 每個住宅物業的樓板（不包括灰泥）的厚度（毫米）	Not Applicable 不適用	Not Applicable 不適用	Not Applicable 不適用	Not Applicable 不適用	Not Applicable 不適用	Not Applicable 不適用	Not Applicable 不適用
The floor-to-floor height of each residential property (mm) 每個住宅物業的層與層之間的高度（毫米）	Not Applicable 不適用	Not Applicable 不適用	Not Applicable 不適用	Not Applicable 不適用	Not Applicable 不適用	Not Applicable 不適用	Not Applicable 不適用

The internal areas of the residential properties on the upper floors will generally be slightly larger than those on the lower floors because of the reducing thickness of the structural walls on the upper floors. This situation and section 10(2)(e) of Part 1 of Schedule 1 to the Residential Properties (First-hand Sales) Ordinance is not applicable for this Development.

#### Remarks:

- The dimensions of floor plans are all structural dimensions in millimetre.
- Please refer to Page AL1 of this Sales Brochure for legend of the terms and abbreviations shown in and remarks applicable to the floor plan.

因住宅物業的較高樓層的結構牆的厚度遞減，較高樓層的內部面積，一般比較低樓層的內部面積稍大。此情況及《一手住宅物業銷售條例》附表 1 第 1 部第 10(2) (e) 條不適用於此發展項目。

#### 備註：

- 樓面平面圖所列之尺寸數字為以毫米標示的建築結構尺寸。
- 有關樓面平面圖中顯示之名詞及簡稱之圖例及通用之附註請參閱本售樓說明書第 AL1 頁。

## AREA OF RESIDENTIAL PROPERTIES IN THE DEVELOPMENT 發展項目中的住宅物業的面積

Description of Residential Property 物業的描述			Saleable Area ( including balcony, utility platform and verandah, if any ) sq. metre (sq.ft.) 實用面積 ( 包括露台、工作平台及陽台 (如有) ) 平方米(平方呎)	Area of other specified items (Not included in the Saleable Area) sq. metre (sq.ft.) 其他指明項目的面積 (不計算入實用面積) 平方米(平方呎)									
Block Name 大廈名稱	Floor 樓層	Unit 單位		Air-conditioning plant room 空調機房	Bay window 窗台	Cockloft 閣樓	Flat Roof 平台	Garden 花園	Parking Space 停車位	Roof 天台	Stairhood 梯屋	Terrace 前庭	Yard 庭院
Downtown 38	5/F 5樓	A	36.342 ( 391 ) 露台 Balcony : - 工作平台 Utility Platform : 1.502 ( 16 ) 陽台 Verandah : -	-	-	-	9.402 (101)	-	-	-	-	-	-
		B	27.946 ( 301 ) 露台 Balcony : 2.002 ( 22 ) 工作平台 Utility Platform : - 陽台 Verandah : -	-	-	-	-	-	-	-	-	-	-
		C	32.987 ( 355 ) 露台 Balcony : - 工作平台 Utility Platform : 1.500 ( 16 ) 陽台 Verandah : -	-	-	-	9.344 (101)	-	-	-	-	-	-
		D	26.260 ( 283 ) 露台 Balcony : - 工作平台 Utility Platform : - 陽台 Verandah : -	-	-	-	9.429 (101)	-	-	-	-	-	-
		E	26.102 ( 281 ) 露台 Balcony : - 工作平台 Utility Platform : - 陽台 Verandah : -	-	-	-	10.393 (112)	-	-	-	-	-	-
		F	25.974 ( 280 ) 露台 Balcony : - 工作平台 Utility Platform : - 陽台 Verandah : -	-	-	-	4.959 (53)	-	-	-	-	-	-

The saleable area of the residential property and the floor area of balcony, utility platform and verandah (if any) are calculated in accordance with section 8 of the Residential Properties (First-hand Sales) Ordinance; and the areas of the other specified items (not included in the saleable area) are calculated in accordance with Part 2 of Schedule 2 of the Residential Properties (First-hand Sales) Ordinance.

Notes:

- The areas as specified above in square feet are converted at a rate of 1 square metre = 10.764 square feet and rounded off to the nearest whole square feet, which may be slightly different from that shown in square metre.
- 4/F, 13/F, 14/F and 24/F are omitted.
- Unit I is omitted.

住宅物業的實用面積，以及露台、工作平台及陽台（如有）的樓面面積，是按照《一手住宅物業銷售條例》第 8 條計算得出的。其他指明項目的面積（不計算入實用面積），是按照《一手住宅物業銷售條例》附表 2 第 2 部計算得出的。

備註:

- 上述所列之面積是以英制之平方呎列明，均以 1 平方米=10.764 平方呎換算，並以四捨五入至整數平方呎，平方呎與平方米之數字可能有些微差異。
- 不設 4 樓、13 樓、14 樓及 24 樓。
- 不設單位 I。

## AREA OF RESIDENTIAL PROPERTIES IN THE DEVELOPMENT 發展項目中的住宅物業的面積

Description of Residential Property 物業的描述			Saleable Area ( including balcony, utility platform and verandah, if any ) sq. metre (sq.ft.) 實用面積 ( 包括露台、工作平台及陽台 (如有) ) 平方米(平方呎)	Area of other specified items (Not included in the Saleable Area) sq. metre (sq.ft.) 其他指明項目的面積 (不計算入實用面積) 平方米(平方呎)										
Block Name 大廈名稱	Floor 樓層	Unit 單位		Air-conditioning plant room 空調機房	Bay window 窗台	Cockloft 閣樓	Flat Roof 平台	Garden 花園	Parking Space 停車位	Roof 天台	Stairhood 梯屋	Terrace 前庭	Yard 庭院	
Downtown 38	5/F 5樓	G	26.097 ( 281 ) 露台 Balcony : - 工作平台 Utility Platform : - 陽台 Verandah : -	-	-	-	4.805 (52)	-	-	-	-	-	-	
		H	33.878 ( 365 ) 露台 Balcony : - 工作平台 Utility Platform : 1.500 ( 16 ) 陽台 Verandah : -	-	-	-	5.133 (55)	-	-	-	-	-	-	
		J	27.843 ( 300 ) 露台 Balcony : 2.002 ( 22 ) 工作平台 Utility Platform : - 陽台 Verandah : -	-	-	-	-	-	-	-	-	-	-	-
		K	28.027 ( 302 ) 露台 Balcony : 2.100 ( 23 ) 工作平台 Utility Platform : - 陽台 Verandah : -	-	-	-	-	-	-	-	-	-	-	-
		L	26.672 ( 287 ) 露台 Balcony : - 工作平台 Utility Platform : - 陽台 Verandah : -	-	-	-	23.314 (251)	-	-	-	-	-	-	-

The saleable area of the residential property and the floor area of balcony, utility platform and verandah (if any) are calculated in accordance with section 8 of the Residential Properties (First-hand Sales) Ordinance; and the areas of the other specified items (not included in the saleable area) are calculated in accordance with Part 2 of Schedule 2 of the Residential Properties (First-hand Sales) Ordinance.

**Notes:**

1. The areas as specified above in square feet are converted at a rate of 1 square metre = 10.764 square feet and rounded off to the nearest whole square feet, which may be slightly different from that shown in square metre.
2. 4/F, 13/F, 14/F and 24/F are omitted.
3. Unit I is omitted.

住宅物業的實用面積，以及露台、工作平台及陽台（如有）的樓面面積，是按照《一手住宅物業銷售條例》第 8 條計算得出的。其他指明項目的面積（不計算入實用面積），是按照《一手住宅物業銷售條例》附表 2 第 2 部計算得出的。

**備註:**

1. 上述所列之面積是以英制之平方呎列明，均以 1 平方米=10.764 平方呎換算，並以四捨五入至整數平方呎，平方呎與平方米之數字可能有些微差異。
2. 不設 4 樓、13 樓、14 樓及 24 樓。
3. 不設單位 I。

## AREA OF RESIDENTIAL PROPERTIES IN THE DEVELOPMENT 發展項目中的住宅物業的面積

Description of Residential Property 物業的描述			Saleable Area ( including balcony, utility platform and verandah, if any ) sq. metre (sq.ft.) 實用面積 ( 包括露台、工作平台及陽台 (如有) ) 平方米(平方呎)	Area of other specified items (Not included in the Saleable Area) sq. metre (sq.ft.) 其他指明項目的面積 (不計算入實用面積) 平方米(平方呎)								
Block Name 大廈名稱	Floor 樓層	Unit 單位		Air-conditioning plant room 空調機房	Bay window 窗台	Cockloft 閣樓	Flat Roof 平台	Garden 花園	Parking Space 停車位	Roof 天台	Stairhood 梯屋	Terrace 前庭
Downtown 38	6/F - 12/F, 15/F - 23/F & 25/F - 27/F 6樓至12樓、 15樓至23樓 及 25樓至27樓	A	38.449 ( 414 ) 露台 Balcony : 2.107 ( 23 ) 工作平台 Utility Platform : 1.502 ( 16 ) 陽台 Verandah : -	-	-	-	-	-	-	-	-	-
		B	27.848 ( 300 ) 露台 Balcony : 2.002 ( 22 ) 工作平台 Utility Platform : - 陽台 Verandah : -	-	-	-	-	-	-	-	-	-
		C	34.995 ( 377 ) 露台 Balcony : 2.008 ( 22 ) 工作平台 Utility Platform : 1.500 ( 16 ) 陽台 Verandah : -	-	-	-	-	-	-	-	-	-
		D	28.266 ( 304 ) 露台 Balcony : 2.006 ( 22 ) 工作平台 Utility Platform : - 陽台 Verandah : -	-	-	-	-	-	-	-	-	-
		E	28.267 ( 304 ) 露台 Balcony : 2.184 ( 24 ) 工作平台 Utility Platform : - 陽台 Verandah : -	-	-	-	-	-	-	-	-	-
		F	27.998 ( 301 ) 露台 Balcony : 2.024 ( 22 ) 工作平台 Utility Platform : - 陽台 Verandah : -	-	-	-	-	-	-	-	-	-

The saleable area of the residential property and the floor area of balcony, utility platform and verandah (if any) are calculated in accordance with section 8 of the Residential Properties (First-hand Sales) Ordinance; and the areas of the other specified items (not included in the saleable area) are calculated in accordance with Part 2 of Schedule 2 of the Residential Properties (First-hand Sales) Ordinance.

Notes:

- The areas as specified above in square feet are converted at a rate of 1 square metre = 10.764 square feet and rounded off to the nearest whole square feet, which may be slightly different from that shown in square metre.
- 4/F, 13/F, 14/F and 24/F are omitted.
- Unit I is omitted.

住宅物業的實用面積，以及露台、工作平台及陽台（如有）的樓面面積，是按照《一手住宅物業銷售條例》第 8 條計算得出的。其他指明項目的面積（不計算入實用面積），是按照《一手住宅物業銷售條例》附表 2 第 2 部計算得出的。

備註:

- 上述所列之面積是以英制之平方呎列明，均以 1 平方米=10.764 平方呎換算，並以四捨五入至整數平方呎，平方呎與平方米之數字可能有些微差異。
- 不設 4 樓、13 樓、14 樓及 24 樓。
- 不設單位 I。

## AREA OF RESIDENTIAL PROPERTIES IN THE DEVELOPMENT 發展項目中的住宅物業的面積

Description of Residential Property 物業的描述			Saleable Area ( including balcony, utility platform and verandah, if any ) sq. metre (sq.ft.) 實用面積 ( 包括露台、工作平台及陽台 (如有) ) 平方米(平方呎)	Area of other specified items (Not included in the Saleable Area) sq. metre (sq.ft.) 其他指明項目的面積 (不計算入實用面積) 平方米(平方呎)								
Block Name 大廈名稱	Floor 樓層	Unit 單位		Air-conditioning plant room 空調機房	Bay window 窗台	Cockloft 閣樓	Flat Roof 平台	Garden 花園	Parking Space 停車位	Roof 天台	Stairhood 梯屋	Terrace 前庭
Downtown 38	6/F - 12/F, 15/F - 23/F & 25/F - 27/F 6樓至12樓、 15樓至23樓 及 25樓至27樓	G	28.222 ( 304 ) 露台 Balcony : 2.125 ( 23 ) 工作平台 Utility Platform : - 陽台 Verandah : -	-	-	-	-	-	-	-	-	-
		H	35.761 ( 385 ) 露台 Balcony : 2.008 ( 22 ) 工作平台 Utility Platform : 1.500 ( 16 ) 陽台 Verandah : -	-	-	-	-	-	-	-	-	-
		J	27.843 ( 300 ) 露台 Balcony : 2.002 ( 22 ) 工作平台 Utility Platform : - 陽台 Verandah : -	-	-	-	-	-	-	-	-	-
		K	28.027 ( 302 ) 露台 Balcony : 2.100 ( 23 ) 工作平台 Utility Platform : - 陽台 Verandah : -	-	-	-	-	-	-	-	-	-
		L	28.689 ( 309 ) 露台 Balcony : 2.204 ( 24 ) 工作平台 Utility Platform : - 陽台 Verandah : -	-	-	-	-	-	-	-	-	-

The saleable area of the residential property and the floor area of balcony, utility platform and verandah (if any) are calculated in accordance with section 8 of the Residential Properties (First-hand Sales) Ordinance; and the areas of the other specified items (not included in the saleable area) are calculated in accordance with Part 2 of Schedule 2 of the Residential Properties (First-hand Sales) Ordinance.

**Notes:**

1. The areas as specified above in square feet are converted at a rate of 1 square metre = 10.764 square feet and rounded off to the nearest whole square feet, which may be slightly different from that shown in square metre.
2. 4/F, 13/F, 14/F and 24/F are omitted.
3. Unit I is omitted.

住宅物業的實用面積，以及露台、工作平台及陽台（如有）的樓面面積，是按照《一手住宅物業銷售條例》第 8 條計算得出的。其他指明項目的面積（不計算入實用面積），是按照《一手住宅物業銷售條例》附表 2 第 2 部計算得出的。

**備註:**

1. 上述所列之面積是以英制之平方呎列明，均以 1 平方米=10.764 平方呎換算，並以四捨五入至整數平方呎，平方呎與平方米之數字可能有些微差異。
2. 不設 4 樓、13 樓、14 樓及 24 樓。
3. 不設單位 I。



## AREA OF RESIDENTIAL PROPERTIES IN THE DEVELOPMENT 發展項目中的住宅物業的面積

Description of Residential Property 物業的描述			Saleable Area ( including balcony, utility platform and verandah, if any ) sq. metre (sq.ft.) 實用面積 ( 包括露台、工作平台及陽台 (如有) ) 平方米(平方呎)	Area of other specified items (Not included in the Saleable Area) sq. metre (sq.ft.) 其他指明項目的面積 (不計算入實用面積) 平方米(平方呎)										
Block Name 大廈名稱	Floor 樓層	Unit 單位		Air-conditioning plant room 空調機房	Bay window 窗台	Cockloft 閣樓	Flat Roof 平台	Garden 花園	Parking Space 停車位	Roof 天台	Stairhood 梯屋	Terrace 前庭	Yard 庭院	
Downtown 38	28/F 28 樓	A	52.146 ( 561 ) 露台 Balcony : 2.002 ( 22 ) 工作平台 Utility Platform : 1.502 ( 16 ) 陽台 Verandah : -	-	-	-	7.516 (81)	-	-	33.066 (356)	4.038 (43)	-	-	
		B	39.628 ( 427 ) 露台 Balcony : 2.008 ( 22 ) 工作平台 Utility Platform : 1.500 ( 16 ) 陽台 Verandah : -	-	-	-	-	-	-	17.482 (188)	-	-	-	
		C	28.078 ( 302 ) 露台 Balcony : 2.006 ( 22 ) 工作平台 Utility Platform : - 陽台 Verandah : -	-	-	-	-	-	-	-	-	-	-	-
		D	51.531 ( 555 ) 露台 Balcony : 2.052 ( 22 ) 工作平台 Utility Platform : - 陽台 Verandah : -	-	-	-	-	-	-	36.328 (391)	3.931 (42)	-	-	

The saleable area of the residential property and the floor area of balcony, utility platform and verandah (if any) are calculated in accordance with section 8 of the Residential Properties (First-hand Sales) Ordinance; and the areas of the other specified items (not included in the saleable area) are calculated in accordance with Part 2 of Schedule 2 of the Residential Properties (First-hand Sales) Ordinance.

Notes:

1. The areas as specified above in square feet are converted at a rate of 1 square metre = 10.764 square feet and rounded off to the nearest whole square feet, which may be slightly different from that shown in square metre.
2. 4/F, 13/F, 14/F and 24/F are omitted.
3. Unit I is omitted.

住宅物業的實用面積，以及露台、工作平台及陽台（如有）的樓面面積，是按照《一手住宅物業銷售條例》第 8 條計算得出的。其他指明項目的面積（不計算入實用面積），是按照《一手住宅物業銷售條例》附表 2 第 2 部計算得出的。

備註:

1. 上述所列之面積是以英制之平方呎列明，均以 1 平方米=10.764 平方呎換算，並以四捨五入至整數平方呎，平方呎與平方米之數字可能有些微差異。
2. 不設 4 樓、13 樓、14 樓及 24 樓。
3. 不設單位 I。

## AREA OF RESIDENTIAL PROPERTIES IN THE DEVELOPMENT 發展項目中的住宅物業的面積

Description of Residential Property 物業的描述			Saleable Area ( including balcony, utility platform and verandah, if any ) sq. metre (sq.ft.) 實用面積 ( 包括露台、工作平台及陽台 (如有) ) 平方米(平方呎)	Area of other specified items (Not included in the Saleable Area) sq. metre (sq.ft.) 其他指明項目的面積 (不計算入實用面積) 平方米(平方呎)									
Block Name 大廈名稱	Floor 樓層	Unit 單位		Air-conditioning plant room 空調機房	Bay window 窗台	Cockloft 閣樓	Flat Roof 平台	Garden 花園	Parking Space 停車位	Roof 天台	Stairhood 梯屋	Terrace 前庭	Yard 庭院
Downtown 38	28/F 28 樓	E	27.747 ( 299 ) 露台 Balcony : 2.100 ( 23 ) 工作平台 Utility Platform : - 陽台 Verandah : -	-	-	-	-	-	12.309 (132)	-	-	-	
		F	36.188 ( 390 ) 露台 Balcony : 2.008 ( 22 ) 工作平台 Utility Platform : 1.500 ( 16 ) 陽台 Verandah : -	-	-	-	-	-	28.541 (307)	-	-	-	
		G	51.746 ( 557 ) 露台 Balcony : 2.002 ( 22 ) 工作平台 Utility Platform : - 陽台 Verandah : -	-	-	-	3.424 (37)	-	-	45.491 (490)	3.846 (41)	-	-
		H	26.993 ( 291 ) 露台 Balcony : 2.204 ( 24 ) 工作平台 Utility Platform : - 陽台 Verandah : -	-	-	-	-	-	22.198 (239)	-	-	-	

The saleable area of the residential property and the floor area of balcony, utility platform and verandah (if any) are calculated in accordance with section 8 of the Residential Properties (First-hand Sales) Ordinance; and the areas of the other specified items (not included in the saleable area) are calculated in accordance with Part 2 of Schedule 2 of the Residential Properties (First-hand Sales) Ordinance.

Notes:

- The areas as specified above in square feet are converted at a rate of 1 square metre = 10.764 square feet and rounded off to the nearest whole square feet, which may be slightly different from that shown in square metre.
- 4/F, 13/F, 14/F and 24/F are omitted.
- Unit I is omitted.

住宅物業的實用面積，以及露台、工作平台及陽台（如有）的樓面面積，是按照《一手住宅物業銷售條例》第 8 條計算得出的。其他指明項目的面積（不計算入實用面積），是按照《一手住宅物業銷售條例》附表 2 第 2 部計算得出的。

備註:

- 上述所列之面積是以英制之平方呎列明，均以 1 平方米=10.764 平方呎換算，並以四捨五入至整數平方呎，平方呎與平方米之數字可能有些微差異。
- 不設 4 樓、13 樓、14 樓及 24 樓。
- 不設單位 I。