

10 發展項目的住宅物業的樓面平面圖

Floor Plans of Residential Properties in the Development



平面圖圖例 Legend For Floor Plan

A.F.	= ARCHITECTURAL FEATURE	= 建築裝飾
A/C	= AIR-CONDITIONER	= 冷氣機
A/C PLATFORM	= AIR-CONDITIONING PLATFORM	= 冷氣機平台
A.D.	= AIR DUCT	= 氣槽
BATH	= BATHROOM	= 浴室
BAL.	= BALCONY	= 露台
BAL. ABOVE	= BALCONY ABOVE	= 露台置上
B.R.	= BEDROOM	= 睡房
BUILDING LINE ABOVE		= 建築物外線置上
CARETAKER'S OFFICE		= 管理員辦公室
CARETAKER'S COUNTER		= 管理員接待處
CLEANSING WATER TANK		= 清潔水缸
COMMON AREA		= 公用範圍
COMMON LOBBY		= 公用大堂
DIN.	= DINING ROOM	= 飯廳
DN	= DOWN	= 落
E.M.C.	= ELECTRICITY METER CABINET	= 電錶櫃
E.M.R.	= ELECTRICITY METER ROOM	= 電錶房
E.L.V.	= EXTRA-LOW VOLTAGE CABLE DUCT CABINET	= 特低壓電線槽櫃
E.V.A.	= EMERGENCY VEHICULAR ACCESS	= 緊急車輛通道
FAN ROOM		= 風機房
FAN ROOM FOR RS/MRR	= FAN ROOM FOR REFUSE STORAGE AND MATERIAL RECOVERY ROOM	= 垃圾及物料回收房用之風機房
FLAT ROOF		= 平台
FLUSHING WATER TANK		= 沖廁水缸
GARDEN		= 花園
H.R.	= HOSE REEL	= 消防喉轆
H.R. AT H/L	= HOSE REEL AT HIGH LEVEL	= 置於高位之消防喉轆
HORIZONTAL SCREEN (GREEN ROOF)		= 橫向屏障(綠化平台)
KIT.	= KITCHEN	= 廚房
LANDSCAPE AREA		= 綠化園林
LAV.	= LAVATORY	= 洗手間
LIFT		= 升降機
LIFT LOBBY		= 升降機大堂
LIFT SHAFT		= 升降機槽
LIV.	= LIVING ROOM	= 客廳
LOBBY		= 大堂
MAINTENANCE FLAT ROOF		= 維修用平台

MAINTENANCE ROOF		= 維修用天台
M.BATH	= MASTER BATHROOM	= 主人浴室
MBR	= MASTER BEDROOM	= 主人睡房
M.C.	= METAL CLADDING	= 金屬飾板
OPEN KIT.	= OPEN KITCHEN	= 開放式廚房
P.A.	= PLANTER	= 花槽
P.D.	= PIPE DUCT	= 管道槽
POTABLE WATER TANK		= 食水缸
POTABLE & FLUSHING WATER PUMP ROOM		= 食水及沖廁水泵房
POWDER RM	= POWDER ROOM	= 客廁
R.C. COVER FOR BAL. BELOW	= REINFORCED CONCRETE COVER FOR (BALCONY)	= (露台)之鋼筋混凝土頂蓋
R.C. COVER FOR U.P. BELOW	= REINFORCED CONCRETE COVER FOR (UTILITY PLATFORM)	= (工作平台)之鋼筋混凝土頂蓋
RECREATIONAL FACILITIES		= 康樂設施
ROOF		= 天台
RS & MRR	= REFUSE STORAGE AND MATERIAL RECOVERY ROOM	= 垃圾及物料回收房
SMOKE VENT		= 排煙口
SPRINKLER CONTROL VALVES & SPRINKLER INLET FOR TOWER 1 & PODIUM		= 消防花灑控制閥及入水制(1座及平台)
STO	= STORE ROOM	= 儲物房
SUNKEN PIPE SPACE		= 下沉式的管道空間
SUNKEN PLANTER		= 下沉式的花槽
SUNKEN PLANTER SLAB		= 下沉式的花槽的樓板
TRANSFER STRUCTURE		= 轉換層結構
T.R.S.	= TEMPORARY REFUGE SPACE	= 臨時庇護處
TBE ROOM	= TELECOMMUNICATIONS AND BROADCASTING ROOM	= 電訊及廣播設備室
TOWER		= 座
UP		= 上
U.P.	= UTILITY PLATFORM	= 工作平台
U.P. ABOVE	= UTILITY PLATFORM ABOVE	= 工作平台置上
UTILITY	= UTILITY ROOM	= 工作間
VOID		= 中空
WALK-IN CLOSET		= 衣帽間
W.M.C.	= WATER METER CABINET	= 水錶櫃
W.M.R.	= WATER METER ROOM	= 水錶房

適用於本節各樓面平面圖之備註：

- 部份樓層外牆範圍設有建築裝飾。詳細資料請參考最新經批准的建築圖則。
- 部份住宅單位的露台及/或平台及/或外牆處或附近設有外露之公用喉管。
- 部份住宅單位客廳、飯廳、睡房、走廊、浴室、盥洗室、儲物室、洗手間及廚房天花板有跌級樓板及/或假天花用以裝置冷氣系統及/或其他機電設備。部份儲物室及洗手間內設有冷氣及/或機電設備之外露喉管/管道。
- 露台及工作平台為不可封閉的地方。
- 樓面平面圖上所顯示的裝置符號，如浴缸、洗滌盆、座廁、花灑、洗滌盆櫃、爐具等乃按最新的經批准的建築圖則繪製，只作一般示意用途。

Notes applicable to the floor plans of this section :

- There may be architectural features on external walls of some of the floors. For details, please refer to the latest approved building plans.
- Common pipes exposed are located at or adjacent to balcony and/ or flat roof and/ or external wall of some residential flats.
- There are sunken slabs and/ or ceiling bulkheads at the ceiling of living rooms, dining rooms, bedrooms, corridors, bathrooms, powder rooms, store rooms, lavatories and kitchens of some residential flats for the installation of conditioning system and/ or other mechanical & electrical services. There are exposed pipes/ ductings for air-conditioning system and/ or mechanical & electrical services within some store rooms and lavatories.
- Balconies and utility platforms are non-enclosed areas.
- Symbols of fittings and fitments shown on floor plans such as bath tub, sink, water closet, shower, sink counter, stove, etc. are prepared based on the latest approved building plans and are for general indication only.

10 發展項目的住宅物業的樓面平面圖

Floor Plans of Residential Properties in the Development



第1座 Tower 1	樓層 Floor	第1A座 Tower 1A								第1B座 Tower 1B		
		A	B	C	D	E	F	G	H	A	B	C
層與層之間的高度 (毫米) Floor-to-floor height (mm)	地下 G/F	3150, 3200, 3300, 3450, 3500	3300, 3450, 3500						3150, 3200, 3300, 3450, 3500	3150, 3450, 3500		
樓板厚度 (毫米) Thickness of the floor slabs (mm)		150								150		

因住宅物業的較高樓層的結構牆的厚度遞減，較高樓層的內部面積，一般比較低樓層的內部面積稍大。

The internal areas of the residential properties on the upper floors will generally be slightly larger than those on the lower floors because of the reducing thickness of the structural walls on the upper floors.

備註：

- 樓面平面圖之尺規所列數字為以毫米標示之建築結構尺寸。
- 每個住宅物業的層與層之間的高度指該樓層之結構地台面與上一層結構地台面之高度距離。
- 每個住宅物業的樓板的厚度不包括灰泥。

Notes:

- The dimensions in the floor plans are all structural dimensions in millimetre.
- The floor-to-floor height refers to the height between the top surface of the structural slab of a floor and the top surface of the structural slab of its immediate upper floor of each residential property.
- The thickness of the floor slabs excludes plaster of each residential property.

備註：

- 第1座(由第1A座及第1B座組成)不設3樓、4樓、13樓及14樓。
- 第1座之第1A座20樓不設C及D單位。

Notes:

- 3/F, 4/F, 13/F and 14/F are omitted in Tower 1 (comprising Tower 1A and Tower 1B).
- Flat C and D on 20/F in Tower 1A of Tower 1 are omitted.

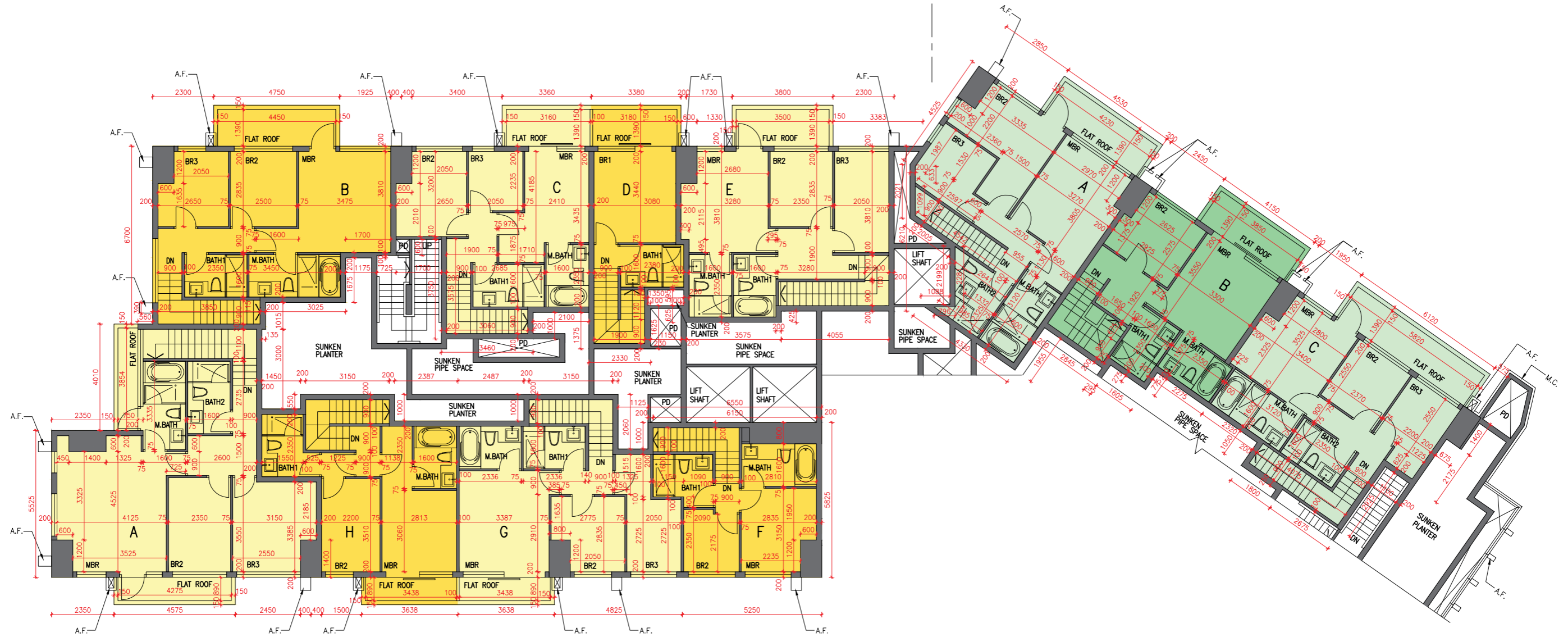
10 發展項目的住宅物業的樓面平面圖
Floor Plans of Residential Properties in the Development



第1座1樓平面圖
Tower 1, 1/F Floor Plan



TOWER 1A ← → TOWER 1B



備註：第1座包括第1A座及第1B座
Note: Tower 1 comprising Tower 1A and Tower 1B

10 發展項目的住宅物業的樓面平面圖 Floor Plans of Residential Properties in the Development



第1座 Tower 1	樓層 Floor	第1A座 Tower 1A								第1B座 Tower 1B		
		A	B	C	D	E	F	G	H	A	B	C
層與層之間的高度(毫米) Floor-to-floor height (mm)	1樓 1/F	3260								3260		
樓板厚度(毫米) Thickness of the floor slabs (mm)		200								200		

因住宅物業的較高樓層的結構牆的厚度遞減，較高樓層的內部面積，一般比較低樓層的內部面積稍大。

The internal areas of the residential properties on the upper floors will generally be slightly larger than those on the lower floors because of the reducing thickness of the structural walls on the upper floors.

備註：

- 樓面平面圖之尺規所列數字為以毫米標示之建築結構尺寸。
- 每個住宅物業的層與層之間的高度指該樓層之結構地台面與上一層結構地台面之高度距離。
- 每個住宅物業的樓板的厚度不包括灰泥。

Notes:

- The dimensions in the floor plans are all structural dimensions in millimetre.
- The floor-to-floor height refers to the height between the top surface of the structural slab of a floor and the top surface of the structural slab of its immediate upper floor of each residential property.
- The thickness of the floor slabs excludes plaster of each residential property.

備註：

- 第1座(由第1A座及第1B座組成)不設3樓、4樓、13樓及14樓。
- 第1座之第1A座20樓不設C及D單位。

Notes:

- 3/F, 4/F, 13/F and 14/F are omitted in Tower 1 (comprising Tower 1A and Tower 1B).
- Flat C and D on 20/F in Tower 1A of Tower 1 are omitted.

10 發展項目的住宅物業的樓面平面圖
Floor Plans of Residential Properties in the Development



第1座5樓平面圖
Tower 1, 5/F Floor Plan



備註：第1座包括第1A座及第1B座
Note: Tower 1 comprising Tower 1A and Tower 1B

10 發展項目的住宅物業的樓面平面圖 Floor Plans of Residential Properties in the Development



第1座 Tower 1	樓層 Floor	第1A座 Tower 1A								第1B座 Tower 1B							
		A	B	C	D	E	F	G	H	A	B	C	D	E	F	G	H
層與層之間的高度 (毫米) Floor-to-floor height (mm)	5樓 5/F	2910, 3210, 3260								2910, 3210, 3260							
樓板厚度 (毫米) Thickness of the floor slabs (mm)		150								150							

因住宅物業的較高樓層的結構牆的厚度遞減，較高樓層的內部面積，一般比較低樓層的內部面積稍大。

The internal areas of the residential properties on the upper floors will generally be slightly larger than those on the lower floors because of the reducing thickness of the structural walls on the upper floors.

備註：

- 樓面平面圖之尺規所列數字為以毫米標示之建築結構尺寸。
- 每個住宅物業的層與層之間的高度指該樓層之結構地台面與上一層結構地台面之高度距離。
- 每個住宅物業的樓板的厚度不包括灰泥。

Notes:

- The dimensions in the floor plans are all structural dimensions in millimetre.
- The floor-to-floor height refers to the height between the top surface of the structural slab of a floor and the top surface of the structural slab of its immediate upper floor of each residential property.
- The thickness of the floor slabs excludes plaster of each residential property.

備註：

- 第1座(由第1A座及第1B座組成)不設3樓、4樓、13樓及14樓。
- 第1座之第1A座20樓不設C及D單位。

Notes:

- 3/F, 4/F, 13/F and 14/F are omitted in Tower 1 (comprising Tower 1A and Tower 1B).
- Flat C and D on 20/F in Tower 1A of Tower 1 are omitted.

10 發展項目的住宅物業的樓面平面圖
Floor Plans of Residential Properties in the Development



第1座6至19樓平面圖
Tower 1, 6/F - 19/F Floor Plan



備註：第1座包括第1A座及第1B座
Note: Tower 1 comprising Tower 1A and Tower 1B

10 發展項目的住宅物業的樓面平面圖 Floor Plans of Residential Properties in the Development



第1座 Tower 1	樓層 Floor	第1A座 Tower 1A								第1B座 Tower 1B							
		A	B	C	D	E	F	G	H	A	B	C	D	E	F	G	H
層與層之間的高度 (毫米) Floor-to-floor height (mm)	6至12樓, 15至18樓 6/F - 12/F, 15/F - 18/F	3260								3260							
樓板厚度 (毫米) Thickness of the floor slabs (mm)		150								150							
層與層之間的高度 (毫米) Floor-to-floor height (mm)	19樓 19/F	3150, 3250, 3450, 3500	3150, 3450, 3500						3150, 3250, 3450, 3500	3150, 3500, 3850						3150, 3250, 3450, 3500	3150, 3500, 3850
樓板厚度 (毫米) Thickness of the floor slabs (mm)		150, 200	150						150, 200	150						150, 200	150

因住宅物業的較高樓層的結構牆的厚度遞減，較高樓層的內部面積，一般比較低樓層的內部面積稍大。

The internal areas of the residential properties on the upper floors will generally be slightly larger than those on the lower floors because of the reducing thickness of the structural walls on the upper floors.

備註：

- 樓面平面圖之尺規所列數字為以毫米標示之建築結構尺寸。
- 每個住宅物業的層與層之間的高度指該樓層之結構地台面與上一層結構地台面之高度距離。
- 每個住宅物業的樓板的厚度不包括灰泥。

Notes:

- The dimensions in the floor plans are all structural dimensions in millimetre.
- The floor-to-floor height refers to the height between the top surface of the structural slab of a floor and the top surface of the structural slab of its immediate upper floor of each residential property.
- The thickness of the floor slabs excludes plaster of each residential property.

備註：

- 第1座(由第1A座及第1B座組成)不設3樓、4樓、13樓及14樓。
- 第1座之第1A座20樓不設C及D單位。

Notes:

- 3/F, 4/F, 13/F and 14/F are omitted in Tower 1 (comprising Tower 1A and Tower 1B).
- Flat C and D on 20/F in Tower 1A of Tower 1 are omitted.

10 發展項目的住宅物業的樓面平面圖
Floor Plans of Residential Properties in the Development



第1座20樓平面圖
Tower 1, 20/F Floor Plan



備註：第1座包括第1A座及第1B座
Note: Tower 1 comprising Tower 1A and Tower 1B

10 發展項目的住宅物業的樓面平面圖 Floor Plans of Residential Properties in the Development



第1座 Tower 1	樓層 Floor	第1A座 Tower 1A				第1B座 Tower 1B		
		A	B	E	F	A	B	C
層與層之間的高度 (毫米) Floor-to-floor height (mm)	20樓 20/F	3500				3500		
樓板厚度 (毫米) Thickness of the floor slabs (mm)		200				200		

因住宅物業的較高樓層的結構牆的厚度遞減，較高樓層的內部面積，一般比較低樓層的內部面積稍大。

The internal areas of the residential properties on the upper floors will generally be slightly larger than those on the lower floors because of the reducing thickness of the structural walls on the upper floors.

備註：

- 樓面平面圖之尺規所列數字為以毫米標示之建築結構尺寸。
- 每個住宅物業的層與層之間的高度指該樓層之結構地台面與上一層結構地台面之高度距離。
- 每個住宅物業的樓板的厚度不包括灰泥。

Notes:

- The dimensions in the floor plans are all structural dimensions in millimetre.
- The floor-to-floor height refers to the height between the top surface of the structural slab of a floor and the top surface of the structural slab of its immediate upper floor of each residential property.
- The thickness of the floor slabs excludes plaster of each residential property.

備註：

- 第1座(由第1A座及第1B座組成)不設3樓、4樓、13樓及14樓。
- 第1座之第1A座20樓不設C及D單位。

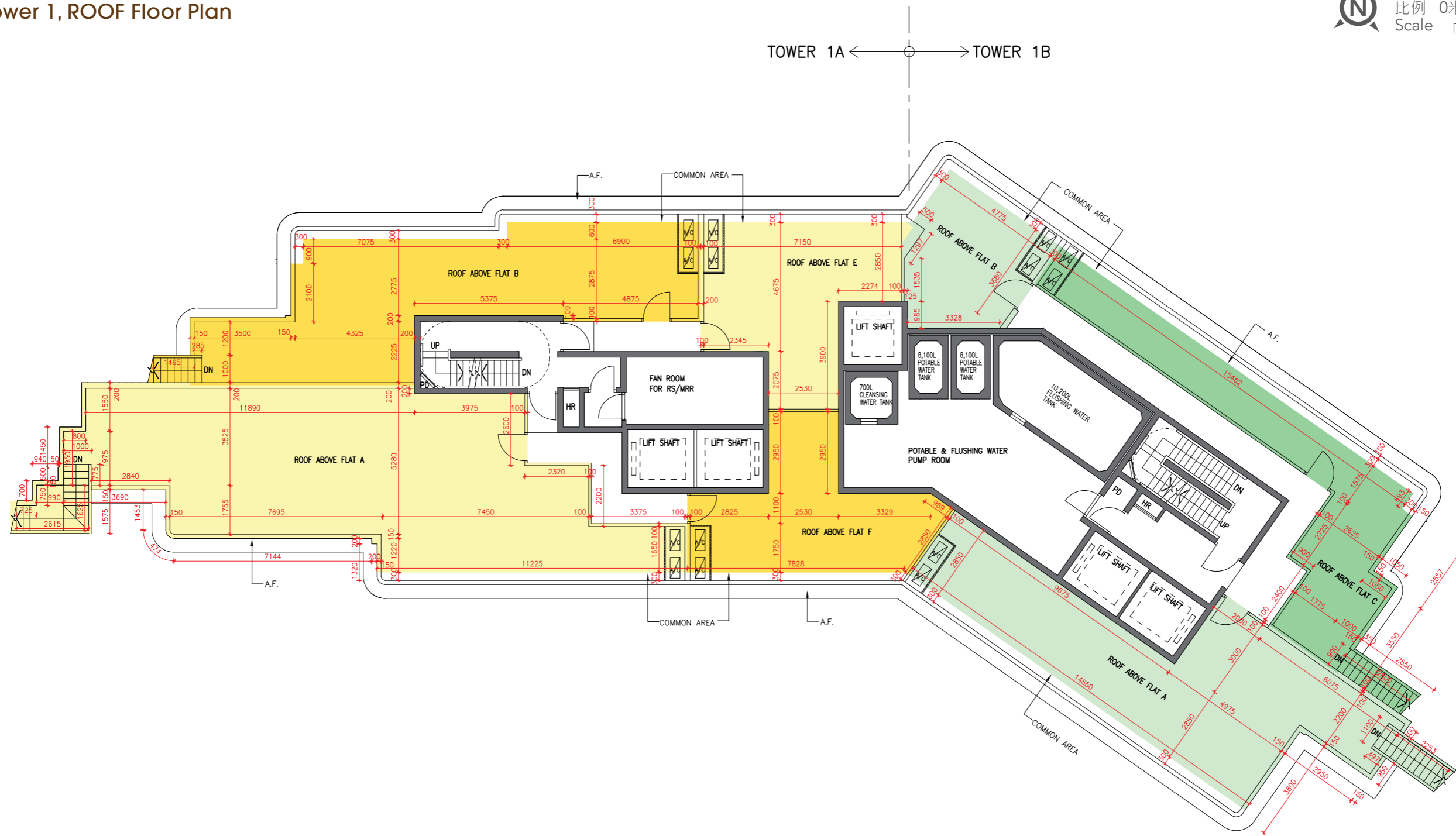
Notes:

- 3/F, 4/F, 13/F and 14/F are omitted in Tower 1 (comprising Tower 1A and Tower 1B).
- Flat C and D on 20/F in Tower 1A of Tower 1 are omitted.

10 發展項目的住宅物業的樓面平面圖
Floor Plans of Residential Properties in the Development



第1座天台平面圖
Tower 1, ROOF Floor Plan



備註：第1座包括第1A座及第1B座
Note: Tower 1 comprising Tower 1A and Tower 1B

10 發展項目的住宅物業的樓面平面圖 Floor Plans of Residential Properties in the Development



第1座 Tower 1	樓層 Floor	第1A座 Tower 1A				第1B座 Tower 1B		
		A	B	E	F	A	B	C
層與層之間的高度 (毫米) Floor-to-floor height (mm)	天台 ROOF	不適用 N/A				不適用 N/A		
樓板厚度 (毫米) Thickness of the floor slabs (mm)		不適用 N/A				不適用 N/A		

因住宅物業的較高樓層的結構牆的厚度遞減，較高樓層的內部面積，一般比較低樓層的內部面積稍大。

The internal areas of the residential properties on the upper floors will generally be slightly larger than those on the lower floors because of the reducing thickness of the structural walls on the upper floors.

備註：

- 樓面平面圖之尺規所列數字為以毫米標示之建築結構尺寸。
- 每個住宅物業的層與層之間的高度指該樓層之結構地台面與上一層結構地台面之高度距離。
- 每個住宅物業的樓板的厚度不包括灰泥。

Notes:

- The dimensions in the floor plans are all structural dimensions in millimetre.
- The floor-to-floor height refers to the height between the top surface of the structural slab of a floor and the top surface of the structural slab of its immediate upper floor of each residential property.
- The thickness of the floor slabs excludes plaster of each residential property.

備註：

- 第1座(由第1A座及第1B座組成)不設3樓、4樓、13樓及14樓。
- 第1座之第1A座20樓不設C及D單位。

Notes:

- 3/F, 4/F, 13/F and 14/F are omitted in Tower 1 (comprising Tower 1A and Tower 1B).
- Flat C and D on 20/F in Tower 1A of Tower 1 are omitted.

10 發展項目的住宅物業的樓面平面圖
Floor Plans of Residential Properties in the Development



第2座地下平面圖
Tower 2, G/F Floor Plan



備註：第2座包括第2A座及第2B座
Note: Tower 2 comprising Tower 2A and Tower 2B

10 發展項目的住宅物業的樓面平面圖 Floor Plans of Residential Properties in the Development



第2座 Tower 2	樓層 Floor	第2A座 Tower 2A		第2B座 Tower 2B			
		A	B	A	B	C	D
層與層之間的高度 (毫米) Floor-to-floor height (mm)	地下 G/F	3150, 3450, 3500		3150, 3450, 3500			
樓板厚度 (毫米) Thickness of the floor slabs (mm)		150		150			

因住宅物業的較高樓層的結構牆的厚度遞減，較高樓層的內部面積，一般比較低樓層的內部面積稍大。

The internal areas of the residential properties on the upper floors will generally be slightly larger than those on the lower floors because of the reducing thickness of the structural walls on the upper floors.

備註：

- 樓面平面圖之尺規所列數字為以毫米標示之建築結構尺寸。
- 每個住宅物業的層與層之間的高度指該樓層之結構地台面與上一層結構地台面之高度距離。
- 每個住宅物業的樓板的厚度不包括灰泥。

Notes:

- The dimensions in the floor plans are all structural dimensions in millimetre.
- The floor-to-floor height refers to the height between the top surface of the structural slab of a floor and the top surface of the structural slab of its immediate upper floor of each residential property.
- The thickness of the floor slabs excludes plaster of each residential property.

備註：

- 第2座(由第2A座及第2B座組成)不設4樓、13樓及14樓。
- 第2座之第2A座1樓不設A、B、C、D及E單位。
- 第2座之第2B座1樓不設B、C及F單位。
- 第2座之第2A座2樓及3樓不設A及B單位。
- 第2座之第2A座20樓不設C及D單位。

Notes:

- 4/F, 13/F and 14/F are omitted in Tower 2 (comprising Tower 2A and Tower 2B).
- Flat A, B, C, D and E on 1/F in Tower 2A of Tower 2 are omitted.
- Flat B, C and F on 1/F in Tower 2B of Tower 2 are omitted.
- Flat A and B on 2/F and 3/F in Tower 2A of Tower 2 are omitted.
- Flat C and D on 20/F in Tower 2A of Tower 2 are omitted.

10 發展項目的住宅物業的樓面平面圖
Floor Plans of Residential Properties in the Development



第2座1樓平面圖
Tower 2, 1/F Floor Plan



備註：第2座包括第2A座及第2B座
Note: Tower 2 comprising Tower 2A and Tower 2B

10 發展項目的住宅物業的樓面平面圖 Floor Plans of Residential Properties in the Development



第2座 Tower 2	樓層 Floor	第2A座 Tower 2A		第2B座 Tower 2B				
		F	G	A	D	E	G	H
層與層之間的高度 (毫米) Floor-to-floor height (mm)	1樓 1/F	3150, 3450, 3500		3150, 3450, 3500				
樓板厚度 (毫米) Thickness of the floor slabs (mm)		150		150				

因住宅物業的較高樓層的結構牆的厚度遞減，較高樓層的內部面積，一般比較低樓層的內部面積稍大。

The internal areas of the residential properties on the upper floors will generally be slightly larger than those on the lower floors because of the reducing thickness of the structural walls on the upper floors.

備註：

- 樓面平面圖之尺規所列數字為以毫米標示之建築結構尺寸。
- 每個住宅物業的層與層之間的高度指該樓層之結構地台面與上一層結構地台面之高度距離。
- 每個住宅物業的樓板的厚度不包括灰泥。

Notes:

- The dimensions in the floor plans are all structural dimensions in millimetre.
- The floor-to-floor height refers to the height between the top surface of the structural slab of a floor and the top surface of the structural slab of its immediate upper floor of each residential property.
- The thickness of the floor slabs excludes plaster of each residential property.

備註：

- 第2座(由第2A座及第2B座組成)不設4樓、13樓及14樓。
- 第2座之第2A座1樓不設A、B、C、D及E單位。
- 第2座之第2B座1樓不設B、C及F單位。
- 第2座之第2A座2樓及3樓不設A及B單位。
- 第2座之第2A座20樓不設C及D單位。

Notes:

- 4/F, 13/F and 14/F are omitted in Tower 2 (comprising Tower 2A and Tower 2B).
- Flat A, B, C, D and E on 1/F in Tower 2A of Tower 2 are omitted.
- Flat B, C and F on 1/F in Tower 2B of Tower 2 are omitted.
- Flat A and B on 2/F and 3/F in Tower 2A of Tower 2 are omitted.
- Flat C and D on 20/F in Tower 2A of Tower 2 are omitted.

10 發展項目的住宅物業的樓面平面圖
Floor Plans of Residential Properties in the Development

第2座2樓平面圖
Tower 2, 2/F Floor Plan



備註：第2座包括第2A座及第2B座
Note: Tower 2 comprising Tower 2A and Tower 2B

10 發展項目的住宅物業的樓面平面圖 Floor Plans of Residential Properties in the Development



第2座 Tower 2	樓層 Floor	第2A座 Tower 2A					第2B座 Tower 2B							
		C	D	E	F	G	A	B	C	D	E	F	G	H
層與層之間的高度 (毫米) Floor-to-floor height (mm)	2樓 2/F	3260					3260							
樓板厚度 (毫米) Thickness of the floor slabs (mm)		150					150							

因住宅物業的較高樓層的結構牆的厚度遞減，較高樓層的內部面積，一般比較低樓層的內部面積稍大。

The internal areas of the residential properties on the upper floors will generally be slightly larger than those on the lower floors because of the reducing thickness of the structural walls on the upper floors.

備註：

- 樓面平面圖之尺規所列數字為以毫米標示之建築結構尺寸。
- 每個住宅物業的層與層之間的高度指該樓層之結構地台面與上一層結構地台面之高度距離。
- 每個住宅物業的樓板的厚度不包括灰泥。

Notes:

- The dimensions in the floor plans are all structural dimensions in millimetre.
- The floor-to-floor height refers to the height between the top surface of the structural slab of a floor and the top surface of the structural slab of its immediate upper floor of each residential property.
- The thickness of the floor slabs excludes plaster of each residential property.

備註：

- 第2座(由第2A座及第2B座組成)不設4樓、13樓及14樓。
- 第2座之第2A座1樓不設A、B、C、D及E單位。
- 第2座之第2B座1樓不設B、C及F單位。
- 第2座之第2A座2樓及3樓不設A及B單位。
- 第2座之第2A座20樓不設C及D單位。

Notes:

- 4/F, 13/F and 14/F are omitted in Tower 2 (comprising Tower 2A and Tower 2B).
- Flat A, B, C, D and E on 1/F in Tower 2A of Tower 2 are omitted.
- Flat B, C and F on 1/F in Tower 2B of Tower 2 are omitted.
- Flat A and B on 2/F and 3/F in Tower 2A of Tower 2 are omitted.
- Flat C and D on 20/F in Tower 2A of Tower 2 are omitted.

10 發展項目的住宅物業的樓面平面圖
Floor Plans of Residential Properties in the Development



第2座3樓平面圖
Tower 2, 3/F Floor Plan



備註：第2座包括第2A座及第2B座
Note: Tower 2 comprising Tower 2A and Tower 2B

10 發展項目的住宅物業的樓面平面圖 Floor Plans of Residential Properties in the Development



第2座 Tower 2	樓層 Floor	第2A座 Tower 2A					第2B座 Tower 2B							
		C	D	E	F	G	A	B	C	D	E	F	G	H
層與層之間的高度 (毫米) Floor-to-floor height (mm)	3樓 3/F	3260					3260							
樓板厚度 (毫米) Thickness of the floor slabs (mm)		150					150							

因住宅物業的較高樓層的結構牆的厚度遞減，較高樓層的內部面積，一般比較低樓層的內部面積稍大。

The internal areas of the residential properties on the upper floors will generally be slightly larger than those on the lower floors because of the reducing thickness of the structural walls on the upper floors.

備註：

- 樓面平面圖之尺規所列數字為以毫米標示之建築結構尺寸。
- 每個住宅物業的層與層之間的高度指該樓層之結構地台面與上一層結構地台面之高度距離。
- 每個住宅物業的樓板的厚度不包括灰泥。

Notes:

- The dimensions in the floor plans are all structural dimensions in millimetre.
- The floor-to-floor height refers to the height between the top surface of the structural slab of a floor and the top surface of the structural slab of its immediate upper floor of each residential property.
- The thickness of the floor slabs excludes plaster of each residential property.

備註：

- 第2座(由第2A座及第2B座組成)不設4樓、13樓及14樓。
- 第2座之第2A座1樓不設A、B、C、D及E單位。
- 第2座之第2B座1樓不設B、C及F單位。
- 第2座之第2A座2樓及3樓不設A及B單位。
- 第2座之第2A座20樓不設C及D單位。

Notes:

- 4/F, 13/F and 14/F are omitted in Tower 2 (comprising Tower 2A and Tower 2B).
- Flat A, B, C, D and E on 1/F in Tower 2A of Tower 2 are omitted.
- Flat B, C and F on 1/F in Tower 2B of Tower 2 are omitted.
- Flat A and B on 2/F and 3/F in Tower 2A of Tower 2 are omitted.
- Flat C and D on 20/F in Tower 2A of Tower 2 are omitted.

10 發展項目的住宅物業的樓面平面圖
Floor Plans of Residential Properties in the Development

第2座5樓平面圖
Tower 2, 5/F Floor Plan



備註：第2座包括第2A座及第2B座
Note: Tower 2 comprising Tower 2A and Tower 2B

10 發展項目的住宅物業的樓面平面圖 Floor Plans of Residential Properties in the Development



第2座 Tower 2	樓層 Floor	第2A座 Tower 2A						第2B座 Tower 2B						
		A	B	C	D	E	F	G	A	B	C	D	E	F
層與層之間的高度 (毫米) Floor-to-floor height (mm)	5樓 5/F	2910, 3210, 3260			3260			3260						
樓板厚度 (毫米) Thickness of the floor slabs (mm)		150						150						

因住宅物業的較高樓層的結構牆的厚度遞減，較高樓層的內部面積，一般比較低樓層的內部面積稍大。

The internal areas of the residential properties on the upper floors will generally be slightly larger than those on the lower floors because of the reducing thickness of the structural walls on the upper floors.

備註：

- 樓面平面圖之尺規所列數字為以毫米標示之建築結構尺寸。
- 每個住宅物業的層與層之間的高度指該樓層之結構地台面與上一層結構地台面之高度距離。
- 每個住宅物業的樓板的厚度不包括灰泥。

Notes:

- The dimensions in the floor plans are all structural dimensions in millimetre.
- The floor-to-floor height refers to the height between the top surface of the structural slab of a floor and the top surface of the structural slab of its immediate upper floor of each residential property.
- The thickness of the floor slabs excludes plaster of each residential property.

備註：

- 第2座(由第2A座及第2B座組成)不設4樓、13樓及14樓。
- 第2座之第2A座1樓不設A、B、C、D及E單位。
- 第2座之第2B座1樓不設B、C及F單位。
- 第2座之第2A座2樓及3樓不設A及B單位。
- 第2座之第2A座20樓不設C及D單位。

Notes:

- 4/F, 13/F and 14/F are omitted in Tower 2 (comprising Tower 2A and Tower 2B).
- Flat A, B, C, D and E on 1/F in Tower 2A of Tower 2 are omitted.
- Flat B, C and F on 1/F in Tower 2B of Tower 2 are omitted.
- Flat A and B on 2/F and 3/F in Tower 2A of Tower 2 are omitted.
- Flat C and D on 20/F in Tower 2A of Tower 2 are omitted.

10 發展項目的住宅物業的樓面平面圖
Floor Plans of Residential Properties in the Development

第2座6至19樓平面圖
Tower 2, 6/F - 19/F Floor Plan



備註：第2座包括第2A座及第2B座
Note: Tower 2 comprising Tower 2A and Tower 2B

10 發展項目的住宅物業的樓面平面圖 Floor Plans of Residential Properties in the Development



第2座 Tower 2	樓層 Floor	第2A座 Tower 2A						第2B座 Tower 2B						
		A	B	C	D	E	F	G	A	B	C	D	E	F
層與層之間的高度 (毫米) Floor-to-floor height (mm)	6至12樓, 15至18樓 6/F - 12/F, 15/F - 18/F	3260						3260						
樓板厚度 (毫米) Thickness of the floor slabs (mm)		150						150						
層與層之間的高度 (毫米) Floor-to-floor height (mm)	19樓 19/F	3150, 3250, 3450, 3500		3150, 3450, 3500			3150, 3250, 3450, 3500	3150, 3450, 3500			3150, 3250, 3450, 3500			
樓板厚度 (毫米) Thickness of the floor slabs (mm)		150, 200		150			150, 200	150			150, 200			

因住宅物業的較高樓層的結構牆的厚度遞減，較高樓層的內部面積，一般比較低樓層的內部面積稍大。

The internal areas of the residential properties on the upper floors will generally be slightly larger than those on the lower floors because of the reducing thickness of the structural walls on the upper floors.

備註：

- 樓面平面圖之尺規所列數字為以毫米標示之建築結構尺寸。
- 每個住宅物業的層與層之間的高度指該樓層之結構地台面與上一層結構地台面之高度距離。
- 每個住宅物業的樓板的厚度不包括灰泥。

Notes:

- The dimensions in the floor plans are all structural dimensions in millimetre.
- The floor-to-floor height refers to the height between the top surface of the structural slab of a floor and the top surface of the structural slab of its immediate upper floor of each residential property.
- The thickness of the floor slabs excludes plaster of each residential property.

備註：

- 第2座(由第2A座及第2B座組成)不設4樓、13樓及14樓。
- 第2座之第2A座1樓不設A、B、C、D及E單位。
- 第2座之第2B座1樓不設B、C及F單位。
- 第2座之第2A座2樓及3樓不設A及B單位。
- 第2座之第2A座20樓不設C及D單位。

Notes:

- 4/F, 13/F and 14/F are omitted in Tower 2 (comprising Tower 2A and Tower 2B).
- Flat A, B, C, D and E on 1/F in Tower 2A of Tower 2 are omitted.
- Flat B, C and F on 1/F in Tower 2B of Tower 2 are omitted.
- Flat A and B on 2/F and 3/F in Tower 2A of Tower 2 are omitted.
- Flat C and D on 20/F in Tower 2A of Tower 2 are omitted.

10 發展項目的住宅物業的樓面平面圖
Floor Plans of Residential Properties in the Development



第2座20樓平面圖
Tower 2, 20/F Floor Plan



備註：第2座包括第2A座及第2B座
Note: Tower 2 comprising Tower 2A and Tower 2B

10 發展項目的住宅物業的樓面平面圖 Floor Plans of Residential Properties in the Development



第2座 Tower 2	樓層 Floor	第2A座 Tower 2A			第2B座 Tower 2B		
		A	B	E	A	B	C
層與層之間的高度 (毫米) Floor-to-floor height (mm)	20樓 20/F	3500			3500		
樓板厚度 (毫米) Thickness of the floor slabs (mm)		200			200		

因住宅物業的較高樓層的結構牆的厚度遞減，較高樓層的內部面積，一般比較低樓層的內部面積稍大。

The internal areas of the residential properties on the upper floors will generally be slightly larger than those on the lower floors because of the reducing thickness of the structural walls on the upper floors.

備註：

- 樓面平面圖之尺規所列數字為以毫米標示之建築結構尺寸。
- 每個住宅物業的層與層之間的高度指該樓層之結構地台面與上一層結構地台面之高度距離。
- 每個住宅物業的樓板的厚度不包括灰泥。

Notes:

- The dimensions in the floor plans are all structural dimensions in millimetre.
- The floor-to-floor height refers to the height between the top surface of the structural slab of a floor and the top surface of the structural slab of its immediate upper floor of each residential property.
- The thickness of the floor slabs excludes plaster of each residential property.

備註：

- 第2座(由第2A座及第2B座組成)不設4樓、13樓及14樓。
- 第2座之第2A座1樓不設A、B、C、D及E單位。
- 第2座之第2B座1樓不設B、C及F單位。
- 第2座之第2A座2樓及3樓不設A及B單位。
- 第2座之第2A座20樓不設C及D單位。

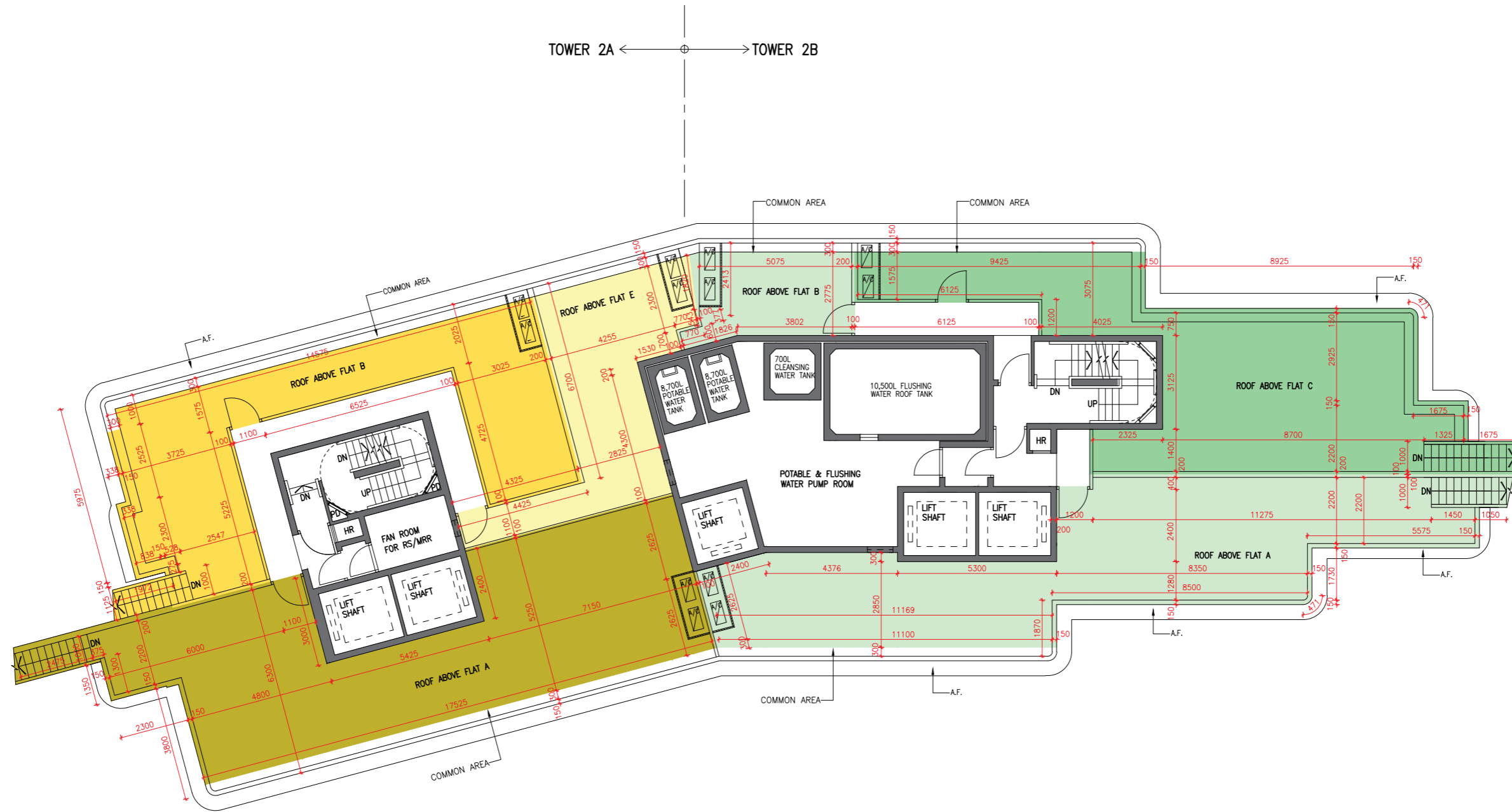
Notes:

- 4/F, 13/F and 14/F are omitted in Tower 2 (comprising Tower 2A and Tower 2B).
- Flat A, B, C, D and E on 1/F in Tower 2A of Tower 2 are omitted.
- Flat B, C and F on 1/F in Tower 2B of Tower 2 are omitted.
- Flat A and B on 2/F and 3/F in Tower 2A of Tower 2 are omitted.
- Flat C and D on 20/F in Tower 2A of Tower 2 are omitted.

10 發展項目的住宅物業的樓面平面圖
Floor Plans of Residential Properties in the Development



第2座天台平面圖
Tower 2, Roof Floor Plan



備註：第2座包括第2A座及第2B座
Note: Tower 2 comprising Tower 2A and Tower 2B

10 發展項目的住宅物業的樓面平面圖 Floor Plans of Residential Properties in the Development



第2座 Tower 2	樓層 Floor	第2A座 Tower 2A			第2B座 Tower 2B		
		A	B	E	A	B	C
層與層之間的高度(毫米) Floor-to-floor height (mm)	天台 ROOF	不適用 N/A			不適用 N/A		
樓板厚度(毫米) Thickness of the floor slabs (mm)		不適用 N/A			不適用 N/A		

因住宅物業的較高樓層的結構牆的厚度遞減，較高樓層的內部面積，一般比較低樓層的內部面積稍大。

The internal areas of the residential properties on the upper floors will generally be slightly larger than those on the lower floors because of the reducing thickness of the structural walls on the upper floors.

備註：

- 樓面平面圖之尺規所列數字為以毫米標示之建築結構尺寸。
- 每個住宅物業的層與層之間的高度指該樓層之結構地台面與上一層結構地台面之高度距離。
- 每個住宅物業的樓板的厚度不包括灰泥。

Notes:

- The dimensions in the floor plans are all structural dimensions in millimetre.
- The floor-to-floor height refers to the height between the top surface of the structural slab of a floor and the top surface of the structural slab of its immediate upper floor of each residential property.
- The thickness of the floor slabs excludes plaster of each residential property.

備註：

- 第2座(由第2A座及第2B座組成)不設4樓、13樓及14樓。
- 第2座之第2A座1樓不設A、B、C、D及E單位。
- 第2座之第2B座1樓不設B、C及F單位。
- 第2座之第2A座2樓及3樓不設A及B單位。
- 第2座之第2A座20樓不設C及D單位。

Notes:

- 4/F, 13/F and 14/F are omitted in Tower 2 (comprising Tower 2A and Tower 2B).
- Flat A, B, C, D and E on 1/F in Tower 2A of Tower 2 are omitted.
- Flat B, C and F on 1/F in Tower 2B of Tower 2 are omitted.
- Flat A and B on 2/F and 3/F in Tower 2A of Tower 2 are omitted.
- Flat C and D on 20/F in Tower 2A of Tower 2 are omitted.