



# 10 期數的住宅物業的樓面平面圖

## FLOOR PLANS OF RESIDENTIAL PROPERTIES IN THE PHASE

### 樓面平面圖圖例 Legend for Floor Plans

A.F.1	= 建築裝飾1 = 建築裝飾於2樓，8樓至11樓及18樓至21樓 Architectural feature at 2/F, 8/F-11/F & 18/F-21/F
A.F.2	= 建築裝飾2 = 建築裝飾於3樓，5樓至7樓，12樓，15樓至17樓 Architectural feature at 3/F, 5/F-7/F, 12/F, 15/F-17/F
A/C PLATFORM	= 冷氣機平台 Air-conditioner Platform
A/C Unit	= 冷氣機 Air-conditioning Unit
ARCH. FEATURE	= 建築裝飾 Architectural Feature
BAL.	= 露台 Balcony
BATH	= 浴室 Bathroom
M.B.R.	= 主人睡房 Master Bedroom
B.R.1	= 睡房 1 Bedroom 1
E.M.R.	= 電錶房 Electric Meter Room
HR	= 消防喉轆 Hose Reel
LIV. / DIN. / B.R.	= 客廳 / 飯廳 / 睡房 Living Room / Dining Room / Bedroom
LIV. / DIN.	= 客廳 / 飯廳 Living Room / Dining Room
P.D. = PD	= 管道 Pipe Duct
STORE	= 儲物房 Store Room
U.P. = UP.	= 工作平台 Utility Platform

DIN.	= 飯廳 Dining Room
DN	= 落 Down
ELV	= 特低壓電線槽 Extra-Low Voltage Cable Duct
E.A.D. = EAD	= 排風管 Exhaust Air Duct
E.M.C.	= 電錶櫃 Electric Meter Cabinet
E.D. = ED	= 電線管道 Electric Cable Duct
H/L	= 高層 High Level
LAV. / LAV	= 廁所 Lavatory
L/L	= 低層 Low Level
LIV.	= 客廳 Living Room
OPEN KIT.	= 開放式廚房 Open Kitchen
R.S.M.R. RM.	= 垃圾及物料回收室 Refuse Storage and Material Recovery Room
UP	= 上 Up
W.M.C.	= 水錶櫃 Water Meter Cabinet
LIFT MACH. ROOM	= 電梯機房 Lift Machine Room
T.R.S. = TRS	= 臨時庇護處 Temporary Refuge Space
P.W.	= 光井 Pipe Well

#### 備註：

1. 部分住宅物業的露台、工作平台、平台、天台或外牆或設有外露之公用喉管，或外牆裝飾內藏之公用喉管。
2. 部分住宅物業內之部分天花或有跌級樓板，用以安裝上層之機電設備或配合上層之結構、建築設計及/或裝修設計上的需要。
3. 部分住宅物業內或設有假陣或假天花用以安裝冷氣喉管及/或其他機電設備。
4. 平台空白位置為供維修大廈設備使用的公用地方。
5. 各住宅物業的樓面平面圖內所展示之裝置及設備的圖標如浴缸、洗面盆、座廁、淋浴間、洗滌盆、櫃等(如有)等乃根據最新經批准的建築圖則擬備，其形狀、尺寸、比例或與實際提供的裝置及設備存在差異，僅供示意及參考之用。
6. 在本頁上之備註和圖例適用於全部的「期數的住宅物業的樓面平面圖」頁數。

#### Notes:

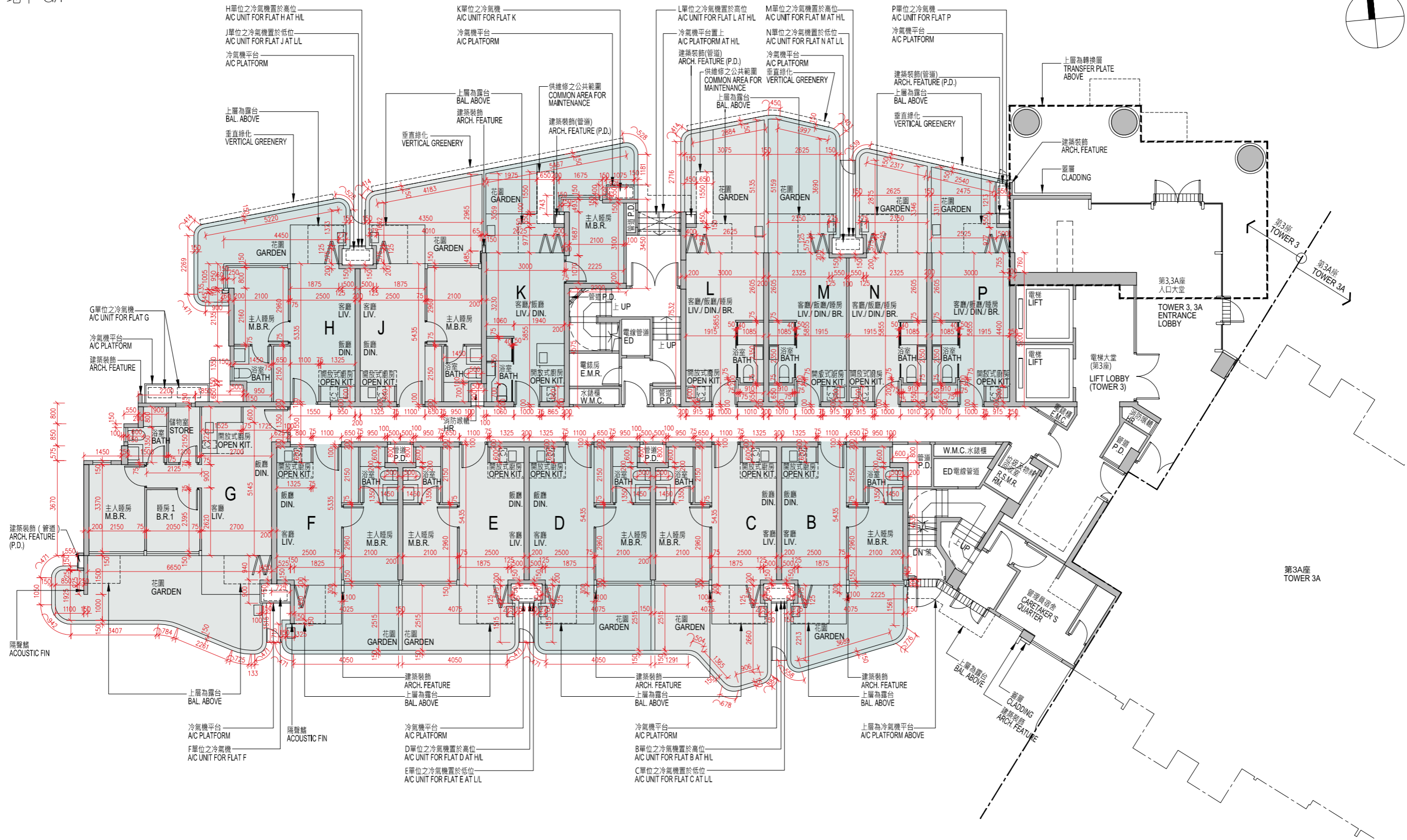
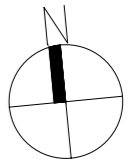
1. Common pipes exposed or enclosed in cladding may be located at the balcony, utility platform, flat roof, roof or external wall of some residential properties.
2. There may be sunken slabs at some parts of the ceiling inside some residential properties for the installation of mechanical and electrical services of the floor above or due to the structural, architectural and/or decoration design requirements of the floor above.
3. There may be ceiling bulkheads or false ceiling inside some residential properties for the installation of air-conditioning conduits and/or other mechanical and electrical services.
4. Blank areas on flat roof are common areas for building facility maintenance.
5. Those symbols of fittings and fitments shown on the floor plans of residential properties like bathtubs, wash basins, water closets, shower cubicles, sink units, cabinets (if any) etc. are prepared in accordance with the latest approved building plans. Their shapes, dimensions, scales may be differed from the fittings and finishes actually provided and they are for indication and reference only.
6. The notes and legends on this page apply to all pages of "Floor plans of residential properties in the Phase".



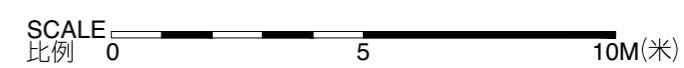
# 10 期數的住宅物業的樓面平面圖

## FLOOR PLANS OF RESIDENTIAL PROPERTIES IN THE PHASE

第3座 Tower 3  
地下 G/F



備註：  
樓面平面圖之尺規所列數字為以毫米標示之建築結構尺寸。  
Note:  
The dimensions of the floor plans are all structural dimension in millimeter.





# 10 期數的住宅物業的樓面平面圖

## FLOOR PLANS OF RESIDENTIAL PROPERTIES IN THE PHASE

	樓層 Floor	單位 Flats											
		B	C	D	E	F	G	H	J	K	L	M	N
每個住宅物業的樓板(不包括灰泥)的厚度(毫米) The thickness of the floor slabs (excluding plaster) of each residential property (mm)	地下 G/F	150											
每個住宅物業的層與層之間的高度(指該樓層之石屎地台面與上一層石屎地台面之高度距離)(毫米) The floor-to-floor height (i.e. the height between the top surface of the structural slab of a floor and the top surface of the structural slab of its immediate upper floor) of each residential property (mm)		3500, 3600	3500, 3600	3500, 3600	3500, 3600	3500, 3600	3500, 3600, 3650, 3900	3500, 3600, 3650, 3900	3500, 3600	3500, 3600	3500, 3600	3500, 3600	3500, 3600

1. 因住宅物業的較高樓層的結構牆的厚度遞減，較高樓層的內部面積，一般比較低樓層的內部面積稍大。
2. 以上平面圖中顯示之名詞、簡稱及其適用的附註，請參閱本售樓說明書第26頁。

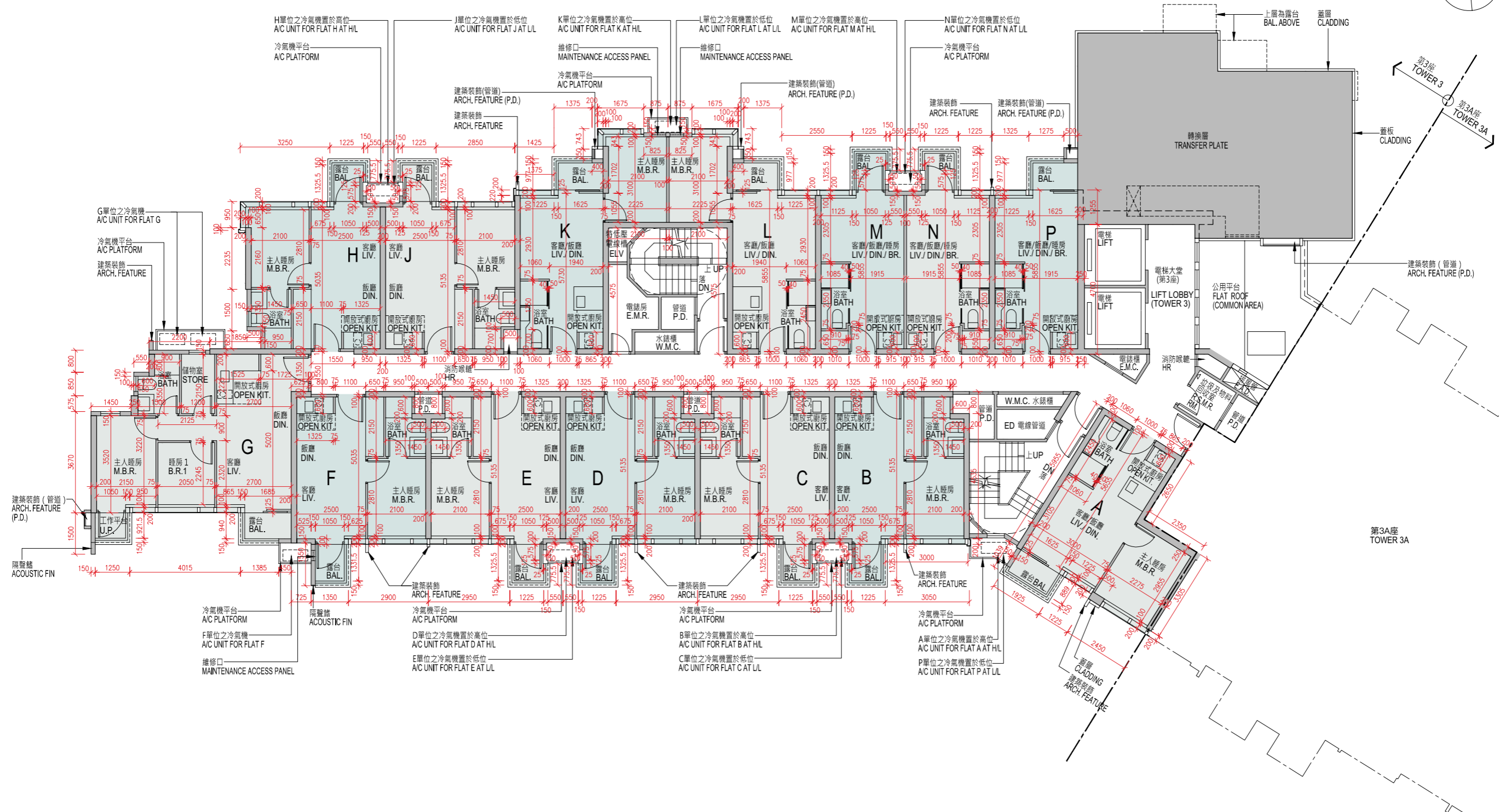
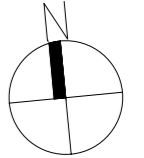
1. The internal areas of the residential properties on the upper floors will generally be slightly larger than those on the lower floors because of the reducing thickness of the structural walls on the upper floors.
2. Please refer to page 26 of this sales brochure for legend of the terms and abbreviations shown on the floor plan above and the explanatory notes that are applicable thereto.



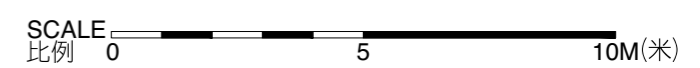
# 10 期數的住宅物業的樓面平面圖

## FLOOR PLANS OF RESIDENTIAL PROPERTIES IN THE PHASE

第3座 Tower 3  
1樓 1/F



備註：  
樓面平面圖之尺規所列數字為以毫米標示之建築結構尺寸。  
Note:  
The dimensions of the floor plans are all structural dimension in millimeter.





# 10 期數的住宅物業的樓面平面圖

## FLOOR PLANS OF RESIDENTIAL PROPERTIES IN THE PHASE

	樓層 Floor	單位 Flats													
		A	B	C	D	E	F	G	H	J	K	L	M	N	P
每個住宅物業的樓板(不包括灰泥)的厚度(毫米) The thickness of the floor slabs (excluding plaster) of each residential property (mm)	1樓 1/F	150													
每個住宅物業的層與層之間的高度(指該樓層之石屎地台面與上一層石屎地台面之高度距離)(毫米) The floor-to-floor height (i.e. the height between the top surface of the structural slab of a floor and the top surface of the structural slab of its immediate upper floor) of each residential property (mm)		3150	3150	3150	3150	3150	3150	3150	3150	3150	3150	3150	3150	3150	3150

1. 因住宅物業的較高樓層的結構牆的厚度遞減，較高樓層的內部面積，一般比較低樓層的內部面積稍大。
2. 以上平面圖中顯示之名詞、簡稱及其適用的附註，請參閱本售樓說明書第26頁。

1. The internal areas of the residential properties on the upper floors will generally be slightly larger than those on the lower floors because of the reducing thickness of the structural walls on the upper floors.
2. Please refer to page 26 of this sales brochure for legend of the terms and abbreviations shown on the floor plan above and the explanatory notes that are applicable thereto.



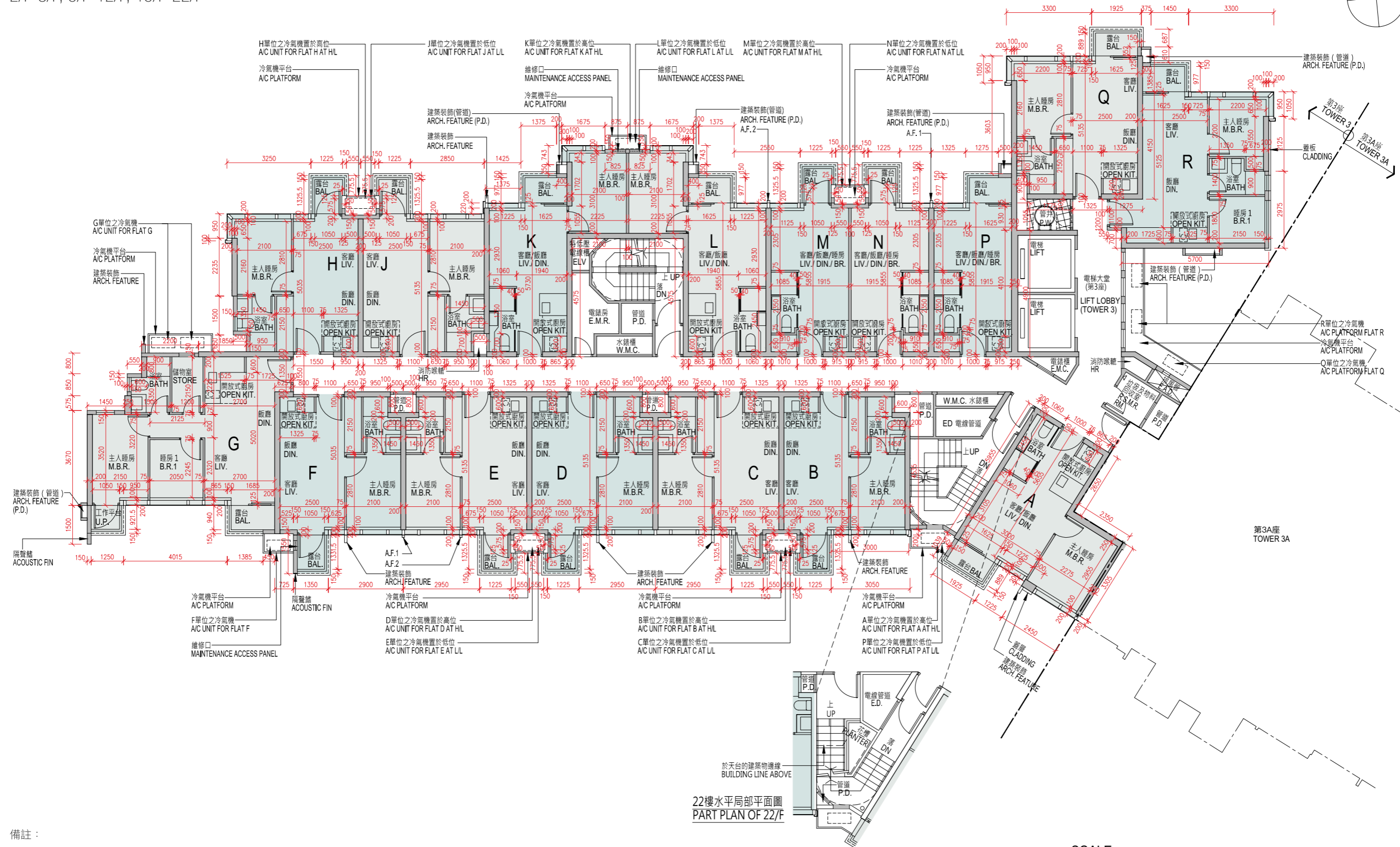
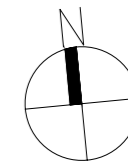
# 10 期數的住宅物業的樓面平面圖

## FLOOR PLANS OF RESIDENTIAL PROPERTIES IN THE PHASE

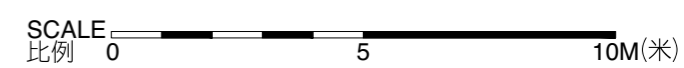
第3座 Tower 3

2樓至3樓、5樓至12樓、15樓至22樓

2/F-3/F, 5/F-12/F, 15/F-22/F



備註：  
樓面平面圖之尺規所列數字為以毫米標示之建築結構尺寸。  
Note:  
The dimensions of the floor plans are all structural dimension in millimeter.





# 10 期數的住宅物業的樓面平面圖

## FLOOR PLANS OF RESIDENTIAL PROPERTIES IN THE PHASE

	樓層 Floor	單位 Flats															
		A	B	C	D	E	F	G	H	J	K	L	M	N	P	Q	R
每個住宅物業的樓板(不包括灰泥)的厚度(毫米) The thickness of the floor slabs (excluding plaster) of each residential property (mm)	2樓至3樓、 5樓至12樓、 15樓至21樓 2/F-3/F, 5/F-12/F, 15/F-21/F	150															
每個住宅物業的層與層之間的高度(指該樓層之石屎地台面與上一層石屎地台面之高度距離)(毫米) The floor-to-floor height (i.e. the height between the top surface of the structural slab of a floor and the top surface of the structural slab of its immediate upper floor) of each residential property (mm)		3150	3150	3150	3150	3150	3150	3150	3150	3150	3150	3150	3150	3150	3150	3150	3150
每個住宅物業的樓板(不包括灰泥)的厚度(毫米) The thickness of the floor slabs (excluding plaster) of each residential property (mm)	22樓 22/F	150, 200															
每個住宅物業的層與層之間的高度(指該樓層之石屎地台面與上一層石屎地台面之高度距離)(毫米) The floor-to-floor height (i.e. the height between the top surface of the structural slab of a floor and the top surface of the structural slab of its immediate upper floor) of each residential property (mm)		3150, 3200, 3450	3150, 3200, 3450	3150, 3200, 3450	3150, 3200, 3450	3150, 3200, 3450	3150, 3200, 3450	3150, 3200, 3400, 3450	3150, 3200, 3400, 3450	3150, 3200, 3450	3150, 3200, 3450	3150, 3200, 3450	3150, 3200, 3450	3150, 3200, 3450	3150, 3200, 3450	3150, 3200, 3450	3150, 3200, 3450

1. 因住宅物業的較高樓層的結構牆的厚度遞減，較高樓層的內部面積，一般比較低樓層的內部面積稍大。
2. 以上平面圖中顯示之名詞、簡稱及其適用的附註，請參閱本售樓說明書第26頁。

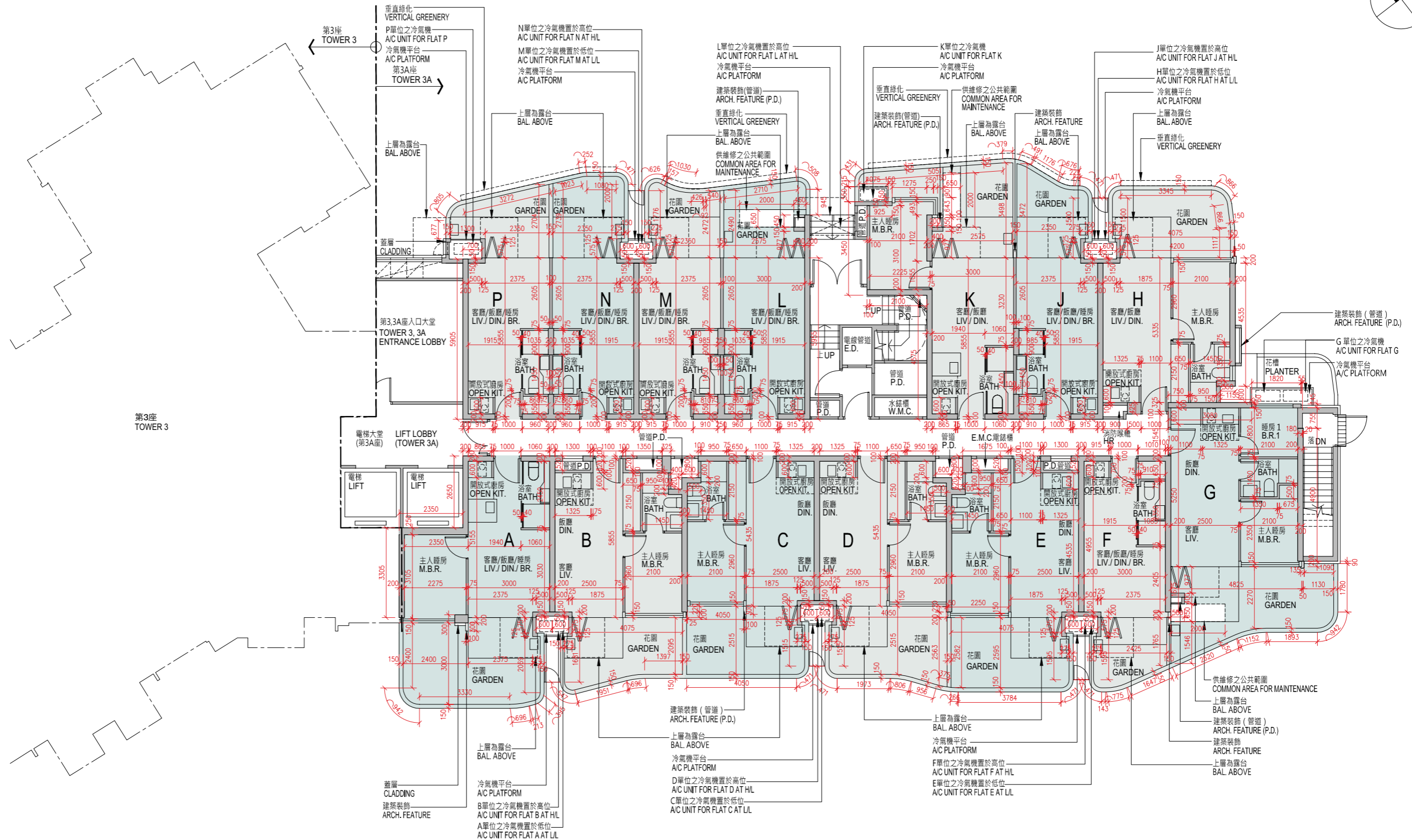
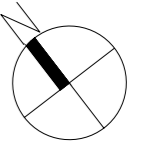
1. The internal areas of the residential properties on the upper floors will generally be slightly larger than those on the lower floors because of the reducing thickness of the structural walls on the upper floors.
2. Please refer to page 26 of this sales brochure for legend of the terms and abbreviations shown on the floor plan above and the explanatory notes that are applicable thereto.



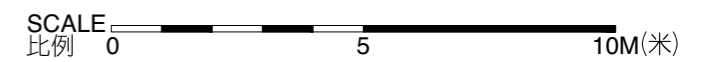
# 10 期數的住宅物業的樓面平面圖

## FLOOR PLANS OF RESIDENTIAL PROPERTIES IN THE PHASE

第3A座 Tower 3A  
地下 G/F



備註：  
樓面平面圖之尺規所列數字為以毫米標示之建築結構尺寸。  
Note:  
The dimensions of the floor plans are all structural dimension in millimeter.







# 10 期數的住宅物業的樓面平面圖

## FLOOR PLANS OF RESIDENTIAL PROPERTIES IN THE PHASE

	樓層 Floor	單位 Flats													
		A	B	C	D	E	F	G	H	J	K	L	M	N	P
每個住宅物業的樓板(不包括灰泥)的厚度(毫米) The thickness of the floor slabs (excluding plaster) of each residential property (mm)	地下 G/F	150													
每個住宅物業的層與層之間的高度(指該樓層之石屎地台面與上一層石屎地台面之高度距離)(毫米) The floor-to-floor height (i.e. the height between the top surface of the structural slab of a floor and the top surface of the structural slab of its immediate upper floor) of each residential property (mm)		3500, 3600, 3900	3500, 3600, 3900	3500, 3600, 3900	3500, 3600	3500, 3600	3500, 3600	3500, 3600, 3900	3500, 3600, 3900	3500, 3600	3500, 3600	3500, 3600	3500, 3600	3500, 3600	3500, 3600

1. 因住宅物業的較高樓層的結構牆的厚度遞減，較高樓層的內部面積，一般比較低樓層的內部面積稍大。
2. 以上平面圖中顯示之名詞、簡稱及其適用的附註，請參閱本售樓說明書第26頁。

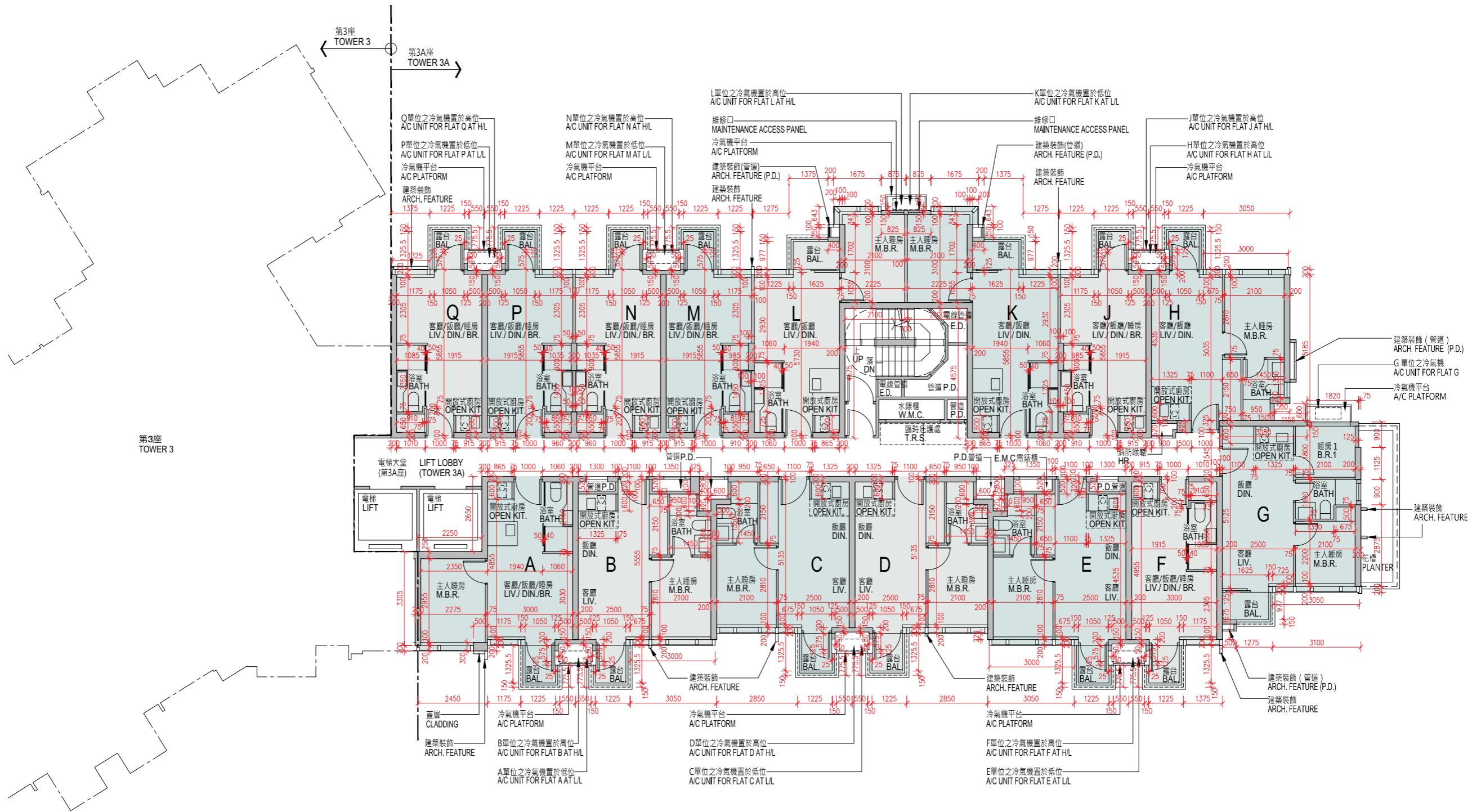
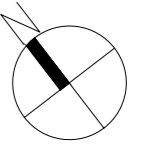
1. The internal areas of the residential properties on the upper floors will generally be slightly larger than those on the lower floors because of the reducing thickness of the structural walls on the upper floors.
2. Please refer to page 26 of this sales brochure for legend of the terms and abbreviations shown on the floor plan above and the explanatory notes that are applicable thereto.



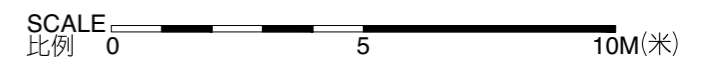
# 10 期數的住宅物業的樓面平面圖

## FLOOR PLANS OF RESIDENTIAL PROPERTIES IN THE PHASE

第3A座 Tower 3A  
1樓 1/F



備註：  
樓面平面圖之尺規所列數字為以毫米標示之建築結構尺寸。  
Note:  
The dimensions of the floor plans are all structural dimension in millimeter.





# 10 期數的住宅物業的樓面平面圖

## FLOOR PLANS OF RESIDENTIAL PROPERTIES IN THE PHASE

	樓層 Floor	單位 Flats													
		A	B	C	D	E	F	G	H	J	K	L	M	N	P
每個住宅物業的樓板(不包括灰泥)的厚度(毫米) The thickness of the floor slabs (excluding plaster) of each residential property (mm)	1樓 1/F	150													
每個住宅物業的層與層之間的高度(指該樓層之石屎地台面與上一層石屎地台面之高度距離)(毫米) The floor-to-floor height (i.e. the height between the top surface of the structural slab of a floor and the top surface of the structural slab of its immediate upper floor) of each residential property (mm)		3150	3150	3150	3150	3150	3150	3150	3150	3150	3150	3150	3150	3150	3150

1. 因住宅物業的較高樓層的結構牆的厚度遞減，較高樓層的內部面積，一般比較低樓層的內部面積稍大。
2. 以上平面圖中顯示之名詞、簡稱及其適用的附註，請參閱本售樓說明書第26頁。

1. The internal areas of the residential properties on the upper floors will generally be slightly larger than those on the lower floors because of the reducing thickness of the structural walls on the upper floors.
2. Please refer to page 26 of this sales brochure for legend of the terms and abbreviations shown on the floor plan above and the explanatory notes that are applicable thereto.



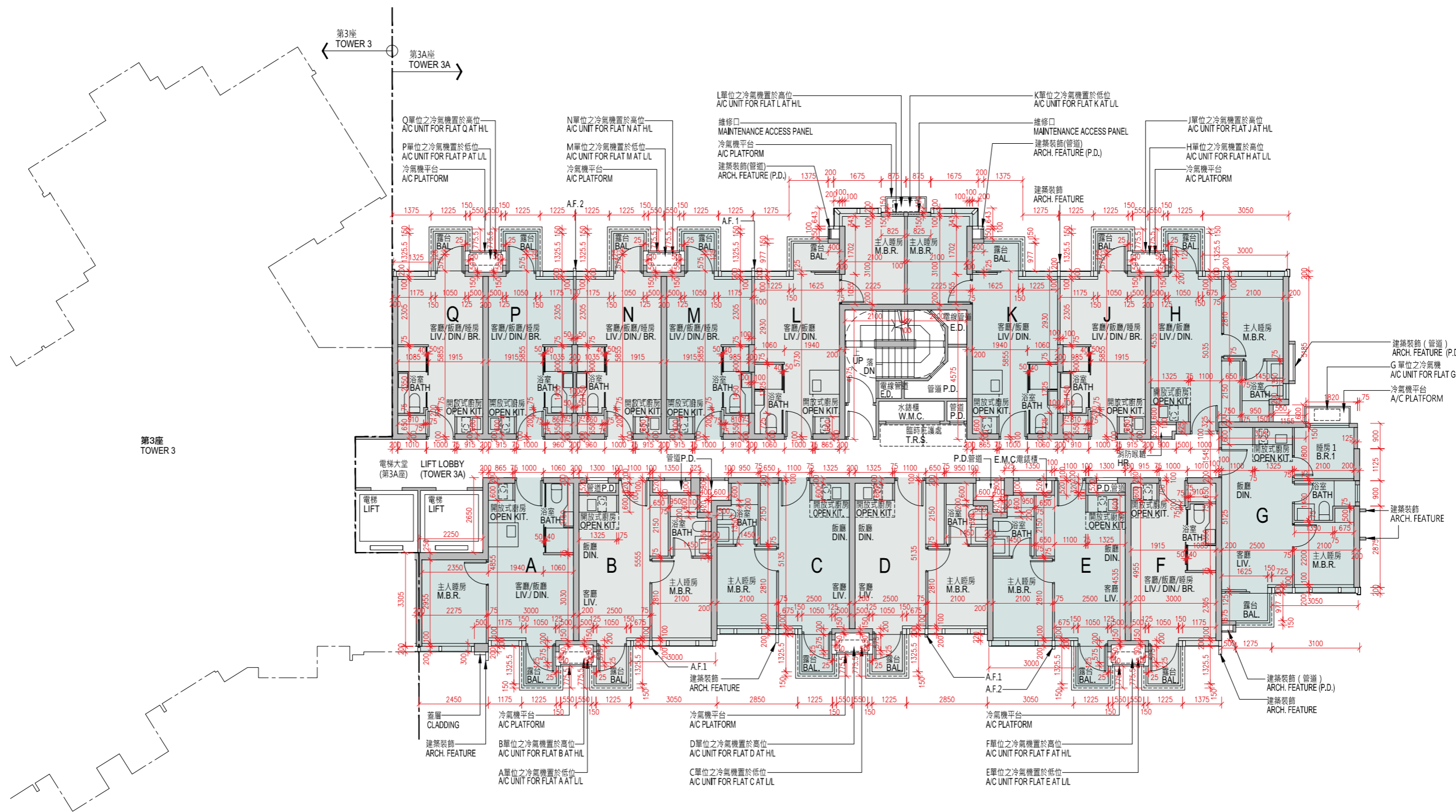
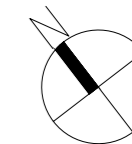
# 10 期數的住宅物業的樓面平面圖

## FLOOR PLANS OF RESIDENTIAL PROPERTIES IN THE PHASE

第3A座 Tower 3A

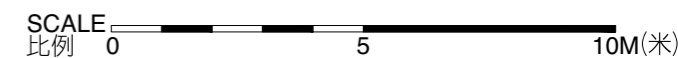
2樓至3樓、5樓至12樓、15樓至22樓

2/F-3/F, 5/F-12/F, 15/F-22/F



備註：  
樓面平面圖之尺規所列數字為以毫米標示之建築結構尺寸。

Note:  
The dimensions of the floor plans are all structural dimension in millimeter.





# 10 期數的住宅物業的樓面平面圖

## FLOOR PLANS OF RESIDENTIAL PROPERTIES IN THE PHASE

	樓層 Floor	單位 Flats													
		A	B	C	D	E	F	G	H	J	K	L	M	N	P
每個住宅物業的樓板(不包括灰泥)的厚度(毫米) The thickness of the floor slabs (excluding plaster) of each residential property (mm)	2樓至3樓、 5樓至12樓、 15樓至21樓 2/F-3/F, 5/F-12/F, 15/F-21/F	150													
每個住宅物業的層與層之間的高度(指該樓層之石屎地台面與上一層石屎地台面之高度距離)(毫米) The floor-to-floor height (i.e. the height between the top surface of the structural slab of a floor and the top surface of the structural slab of its immediate upper floor) of each residential property (mm)		3150	3150	3150	3150	3150	3150	3150	3150	3150	3150	3150	3150	3150	3150
每個住宅物業的樓板(不包括灰泥)的厚度(毫米) The thickness of the floor slabs (excluding plaster) of each residential property (mm)	22樓 22/F	150, 200													
每個住宅物業的層與層之間的高度(指該樓層之石屎地台面與上一層石屎地台面之高度距離)(毫米) The floor-to-floor height (i.e. the height between the top surface of the structural slab of a floor and the top surface of the structural slab of its immediate upper floor) of each residential property (mm)		3150, 3200, 3450	3150, 3200, 3450	3150, 3200, 3450	3150, 3200, 3450	3150, 3200, 3450	3150, 3200, 3450	3150, 3200, 3450	3150, 3200, 3400, 3450	3150, 3200, 3450	3150, 3200, 3450	3150, 3200, 3450	3150, 3200, 3450	3150, 3200, 3450	3150, 3200, 3450

1. 因住宅物業的較高樓層的結構牆的厚度遞減，較高樓層的內部面積，一般比較低樓層的內部面積稍大。
2. 以上平面圖中顯示之名詞、簡稱及其適用的附註，請參閱本售樓說明書第26頁。

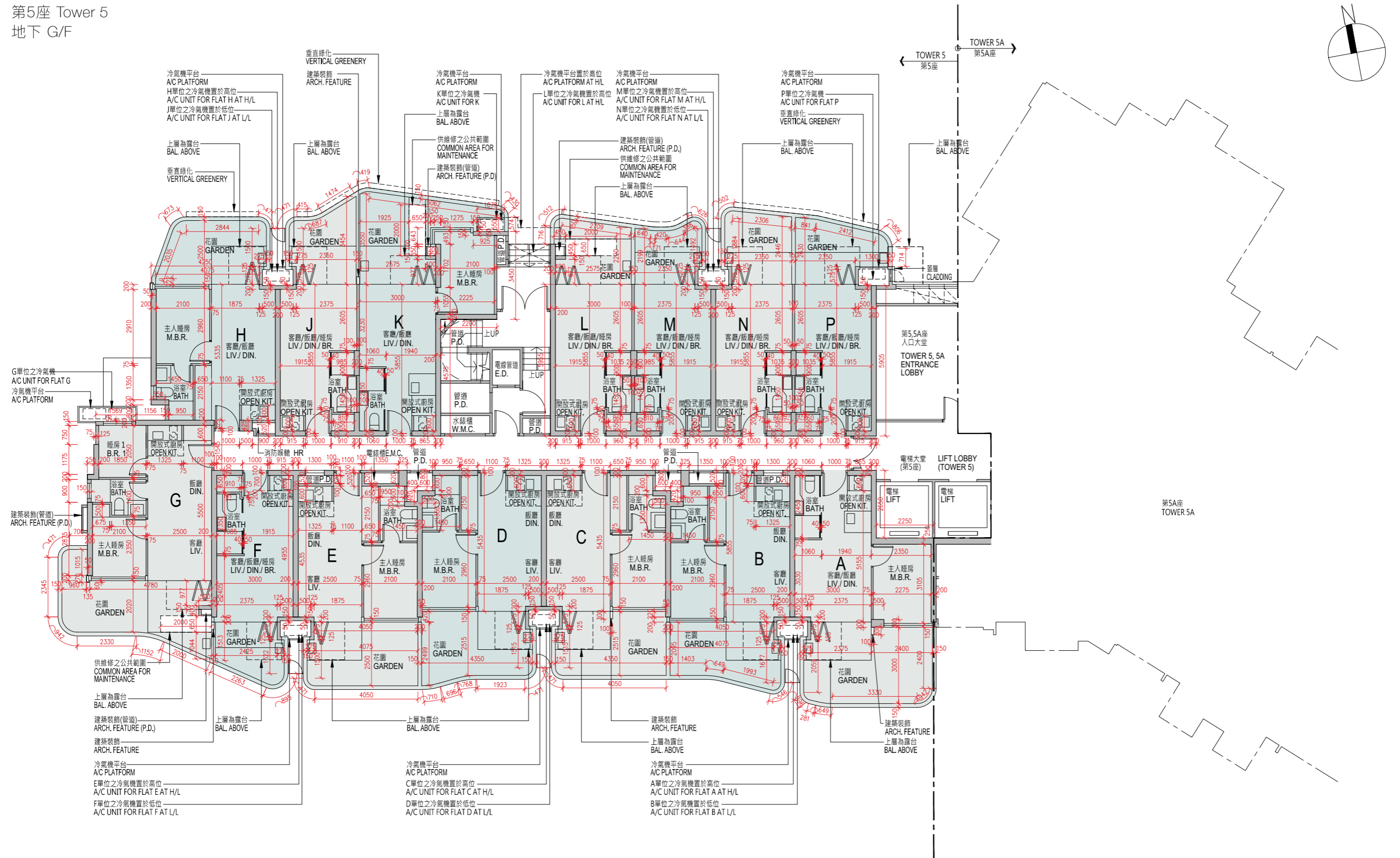
1. The internal areas of the residential properties on the upper floors will generally be slightly larger than those on the lower floors because of the reducing thickness of the structural walls on the upper floors.
2. Please refer to page 26 of this sales brochure for legend of the terms and abbreviations shown on the floor plan above and the explanatory notes that are applicable thereto.



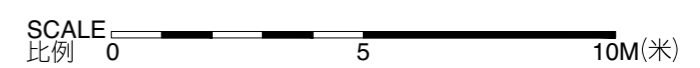
# 10 期數的住宅物業的樓面平面圖

## FLOOR PLANS OF RESIDENTIAL PROPERTIES IN THE PHASE

第5座 Tower 5  
地下 G/F



備註：  
樓面平面圖之尺規所列數字為以毫米標示之建築結構尺寸。  
Note:  
The dimensions of the floor plans are all structural dimension in millimeter.





# 10 期數的住宅物業的樓面平面圖

## FLOOR PLANS OF RESIDENTIAL PROPERTIES IN THE PHASE

	樓層 Floor	單位 Flats													
		A	B	C	D	E	F	G	H	J	K	L	M	N	P
每個住宅物業的樓板(不包括灰泥)的厚度(毫米) The thickness of the floor slabs (excluding plaster) of each residential property (mm)	地下 G/F	150													
每個住宅物業的層與層之間的高度(指該樓層之石屎地台面與上一層石屎地台面之高度距離)(毫米) The floor-to-floor height (i.e. the height between the top surface of the structural slab of a floor and the top surface of the structural slab of its immediate upper floor) of each residential property (mm)		3500, 3600	3500, 3600	3500, 3600	3500, 3600	3500, 3600	3500, 3600	3500, 3600, 3900	3500, 3600, 3650, 3900	3500, 3600	3500, 3600	3500, 3600	3500, 3600	3500, 3600	3500, 3600

1. 因住宅物業的較高樓層的結構牆的厚度遞減，較高樓層的內部面積，一般比較低樓層的內部面積稍大。
2. 以上平面圖中顯示之名詞、簡稱及其適用的附註，請參閱本售樓說明書第26頁。

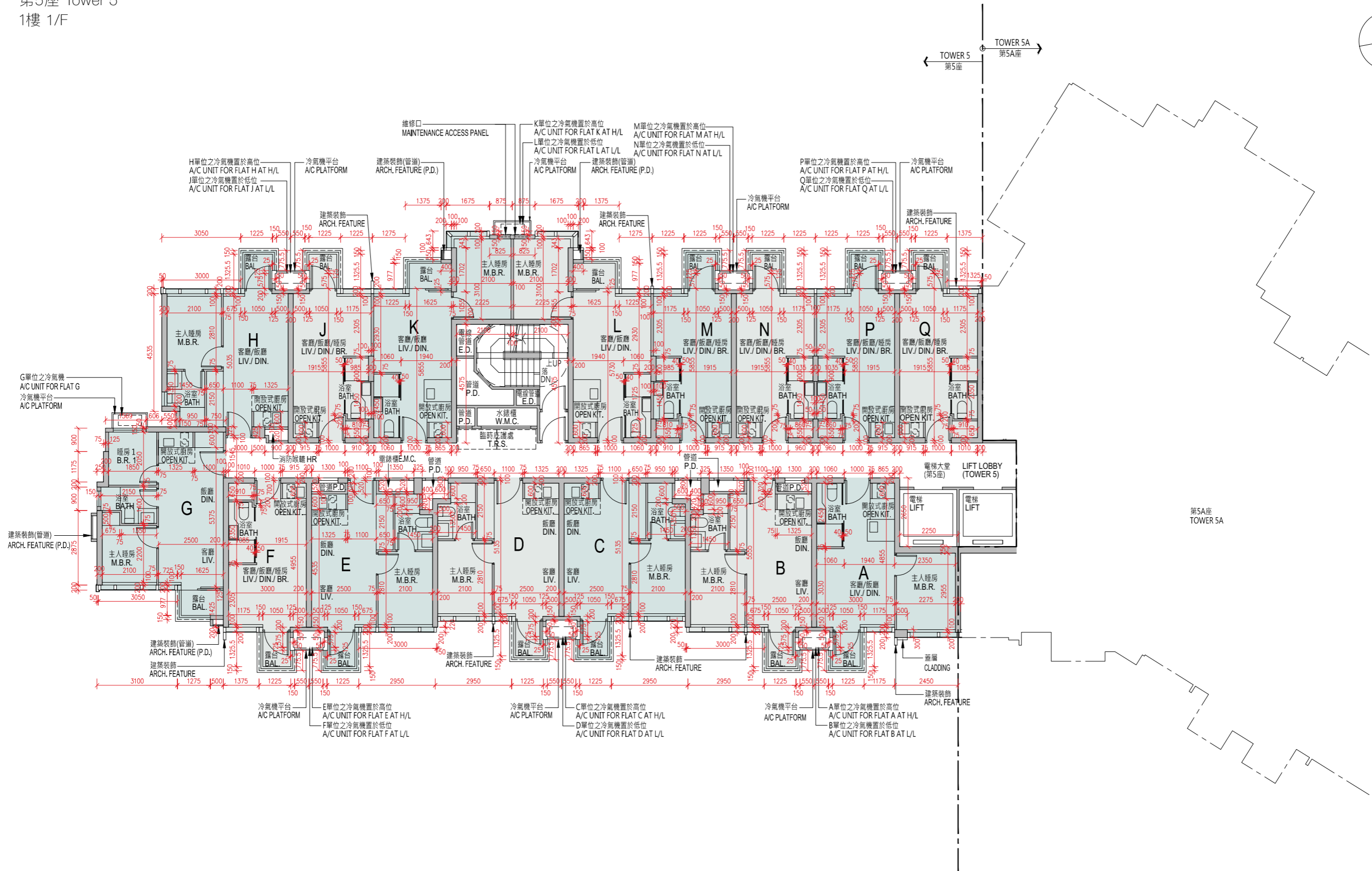
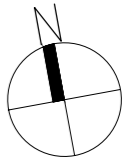
1. The internal areas of the residential properties on the upper floors will generally be slightly larger than those on the lower floors because of the reducing thickness of the structural walls on the upper floors.
2. Please refer to page 26 of this sales brochure for legend of the terms and abbreviations shown on the floor plan above and the explanatory notes that are applicable thereto.



# 10 期數的住宅物業的樓面平面圖

## FLOOR PLANS OF RESIDENTIAL PROPERTIES IN THE PHASE

第5座 Tower 5  
1樓 1/F



備註：  
樓面平面圖之尺規所列數字為以毫米標示之建築結構尺寸。  
Note:  
The dimensions of the floor plans are all structural dimension in millimeter.

SCALE  
比例 0 5 10M(米)





# 10 期數的住宅物業的樓面平面圖

## FLOOR PLANS OF RESIDENTIAL PROPERTIES IN THE PHASE

	樓層 Floor	單位 Flats													
		A	B	C	D	E	F	G	H	J	K	L	M	N	P
每個住宅物業的樓板(不包括灰泥)的厚度(毫米) The thickness of the floor slabs (excluding plaster) of each residential property (mm)	1樓 1/F	150													
每個住宅物業的層與層之間的高度(指該樓層之石屎地台面與上一層石屎地台面之高度距離)(毫米) The floor-to-floor height (i.e. the height between the top surface of the structural slab of a floor and the top surface of the structural slab of its immediate upper floor) of each residential property (mm)		3150	3150	3150	3150	3150	3150	3150	3150	3150	3150	3150	3150	3150	3150

1. 因住宅物業的較高樓層的結構牆的厚度遞減，較高樓層的內部面積，一般比較低樓層的內部面積稍大。
2. 以上平面圖中顯示之名詞、簡稱及其適用的附註，請參閱本售樓說明書第26頁。

1. The internal areas of the residential properties on the upper floors will generally be slightly larger than those on the lower floors because of the reducing thickness of the structural walls on the upper floors.
2. Please refer to page 26 of this sales brochure for legend of the terms and abbreviations shown on the floor plan above and the explanatory notes that are applicable thereto.



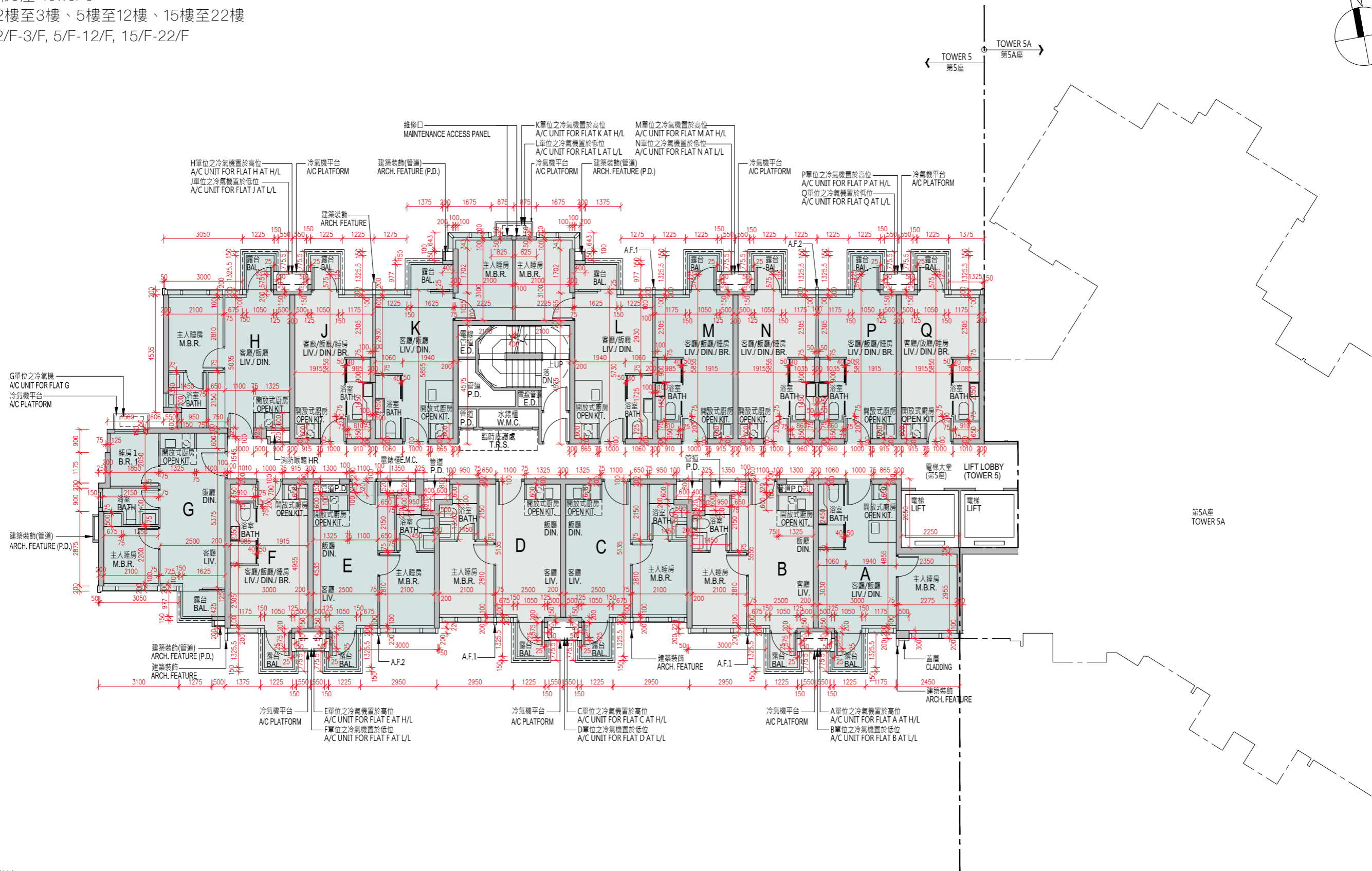
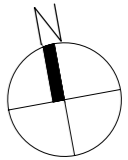
# 10 期數的住宅物業的樓面平面圖

## FLOOR PLANS OF RESIDENTIAL PROPERTIES IN THE PHASE

第5座 Tower 5

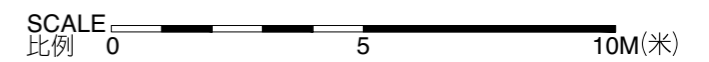
2樓至3樓、5樓至12樓、15樓至22樓

2/F-3/F, 5/F-12/F, 15/F-22/F



備註：  
樓面平面圖之尺規所列數字為以毫米標示之建築結構尺寸。

Note:  
The dimensions of the floor plans are all structural dimension in millimeter.





# 10 期數的住宅物業的樓面平面圖

## FLOOR PLANS OF RESIDENTIAL PROPERTIES IN THE PHASE

	樓層 Floor	單位 Flats													
		A	B	C	D	E	F	G	H	J	K	L	M	N	P
每個住宅物業的樓板(不包括灰泥)的厚度(毫米) The thickness of the floor slabs (excluding plaster) of each residential property (mm)	2樓至3樓、 5樓至12樓、 15樓至21樓 2/F-3/F, 5/F-12/F, 15/F-21/F	150													
每個住宅物業的層與層之間的高度(指該樓層之石屎地台面與上一層石屎地台面之高度距離)(毫米) The floor-to-floor height (i.e. the height between the top surface of the structural slab of a floor and the top surface of the structural slab of its immediate upper floor) of each residential property (mm)		3150	3150	3150	3150	3150	3150	3150	3150	3150	3150	3150	3150	3150	3150
每個住宅物業的樓板(不包括灰泥)的厚度(毫米) The thickness of the floor slabs (excluding plaster) of each residential property (mm)	22樓 22/F	150, 200													
每個住宅物業的層與層之間的高度(指該樓層之石屎地台面與上一層石屎地台面之高度距離)(毫米) The floor-to-floor height (i.e. the height between the top surface of the structural slab of a floor and the top surface of the structural slab of its immediate upper floor) of each residential property (mm)		3150, 3200, 3450	3150, 3200, 3450	3150, 3200, 3450	3150, 3200, 3450	3150, 3200, 3450	3150, 3200, 3450	3150, 3200, 3400, 3450	3150, 3200, 3400, 3450	3150, 3200, 3450	3150, 3200, 3450	3150, 3200, 3450	3150, 3200, 3450	3150, 3200, 3450	3150, 3200, 3450

1. 因住宅物業的較高樓層的結構牆的厚度遞減，較高樓層的內部面積，一般比較低樓層的內部面積稍大。
2. 以上平面圖中顯示之名詞、簡稱及其適用的附註，請參閱本售樓說明書第26頁。

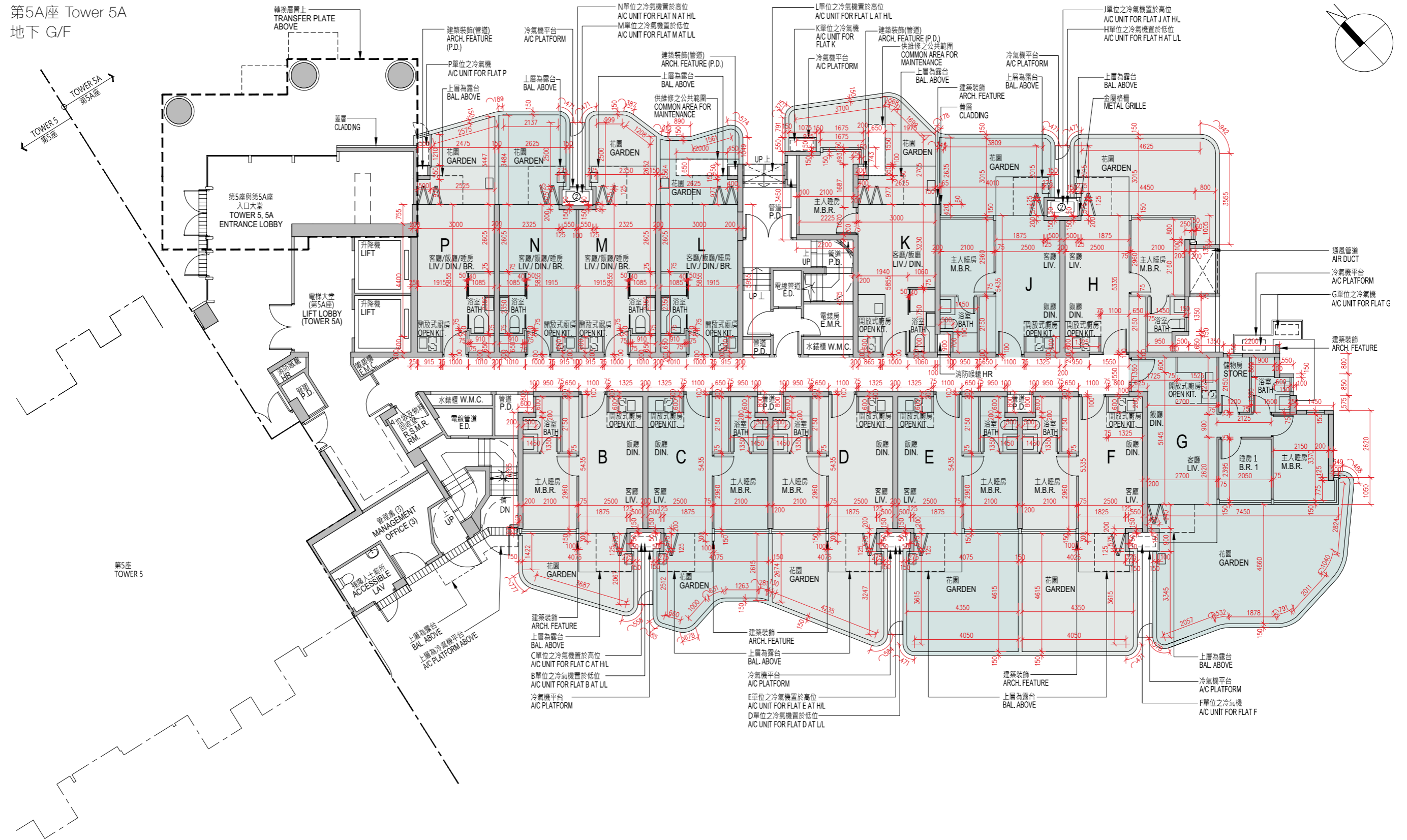
1. The internal areas of the residential properties on the upper floors will generally be slightly larger than those on the lower floors because of the reducing thickness of the structural walls on the upper floors.
2. Please refer to page 26 of this sales brochure for legend of the terms and abbreviations shown on the floor plan above and the explanatory notes that are applicable thereto.



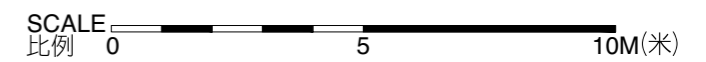
# 10 期數的住宅物業的樓面平面圖

## FLOOR PLANS OF RESIDENTIAL PROPERTIES IN THE PHASE

第5A座 Tower 5A  
地下 G/F



備註：  
樓面平面圖之尺規所列數字為以毫米標示之建築結構尺寸。  
Note:  
The dimensions of the floor plans are all structural dimension in millimeter.





# 10 期數的住宅物業的樓面平面圖

## FLOOR PLANS OF RESIDENTIAL PROPERTIES IN THE PHASE

	樓層 Floor	單位 Flats											
		B	C	D	E	F	G	H	J	K	L	M	N
每個住宅物業的樓板(不包括灰泥)的厚度(毫米) The thickness of the floor slabs (excluding plaster) of each residential property (mm)	地下 G/F	150											
每個住宅物業的層與層之間的高度(指該樓層之石屎地台面與上一層石屎地台面之高度距離)(毫米) The floor-to-floor height (i.e. the height between the top surface of the structural slab of a floor and the top surface of the structural slab of its immediate upper floor) of each residential property (mm)		3500, 3600	3500, 3600	3500, 3600, 3900	3500, 3600, 3900	3500, 3600, 3900	3500, 3600, 3650, 3900	3500, 3600, 3650	3500, 3600	3500, 3600	3500, 3600	3500, 3600	3500, 3600

1. 因住宅物業的較高樓層的結構牆的厚度遞減，較高樓層的內部面積，一般比較低樓層的內部面積稍大。
2. 以上平面圖中顯示之名詞、簡稱及其適用的附註，請參閱本售樓說明書第26頁。

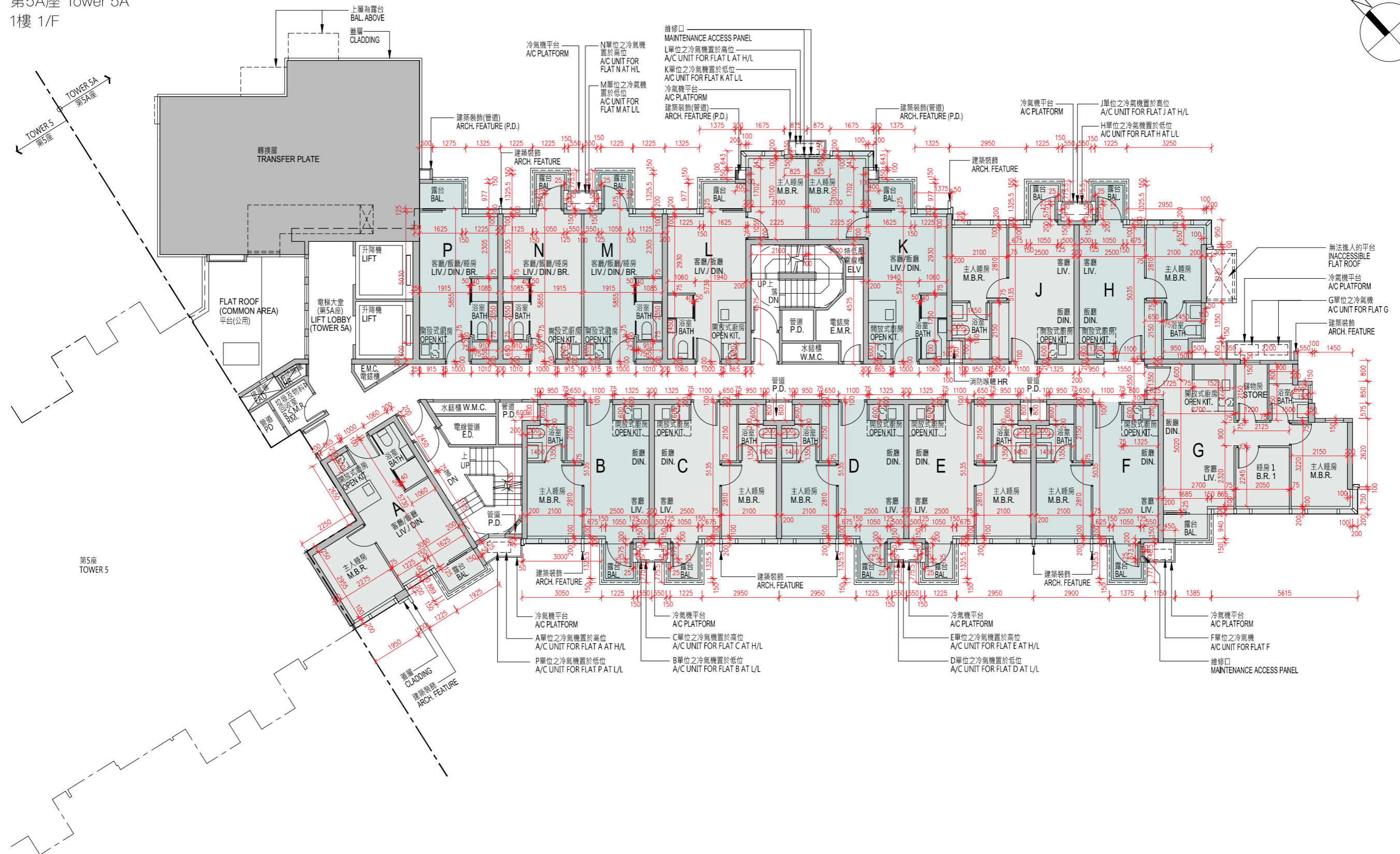
1. The internal areas of the residential properties on the upper floors will generally be slightly larger than those on the lower floors because of the reducing thickness of the structural walls on the upper floors.
2. Please refer to page 26 of this sales brochure for legend of the terms and abbreviations shown on the floor plan above and the explanatory notes that are applicable thereto.



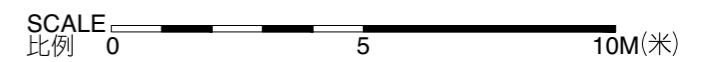
# 10 期數的住宅物業的樓面平面圖

## FLOOR PLANS OF RESIDENTIAL PROPERTIES IN THE PHASE

第5A座 Tower 5A  
1樓 1/F



備註：  
樓面平面圖之尺規所列數字為以毫米標示之建築結構尺寸。  
Note:  
The dimensions of the floor plans are all structural dimension in millimeter.





# 10 期數的住宅物業的樓面平面圖

## FLOOR PLANS OF RESIDENTIAL PROPERTIES IN THE PHASE

	樓層 Floor	單位 Flats													
		A	B	C	D	E	F	G	H	J	K	L	M	N	P
每個住宅物業的樓板(不包括灰泥)的厚度(毫米) The thickness of the floor slabs (excluding plaster) of each residential property (mm)	1樓 1/F	150													
每個住宅物業的層與層之間的高度(指該樓層之石屎地台面與上一層石屎地台面之高度距離)(毫米) The floor-to-floor height (i.e. the height between the top surface of the structural slab of a floor and the top surface of the structural slab of its immediate upper floor) of each residential property (mm)		3150	3150	3150	3150	3150	3150	3150	3150	3150	3150	3150	3150	3150	3150

1. 因住宅物業的較高樓層的結構牆的厚度遞減，較高樓層的內部面積，一般比較低樓層的內部面積稍大。
2. 以上平面圖中顯示之名詞、簡稱及其適用的附註，請參閱本售樓說明書第26頁。

1. The internal areas of the residential properties on the upper floors will generally be slightly larger than those on the lower floors because of the reducing thickness of the structural walls on the upper floors.
2. Please refer to page 26 of this sales brochure for legend of the terms and abbreviations shown on the floor plan above and the explanatory notes that are applicable thereto.



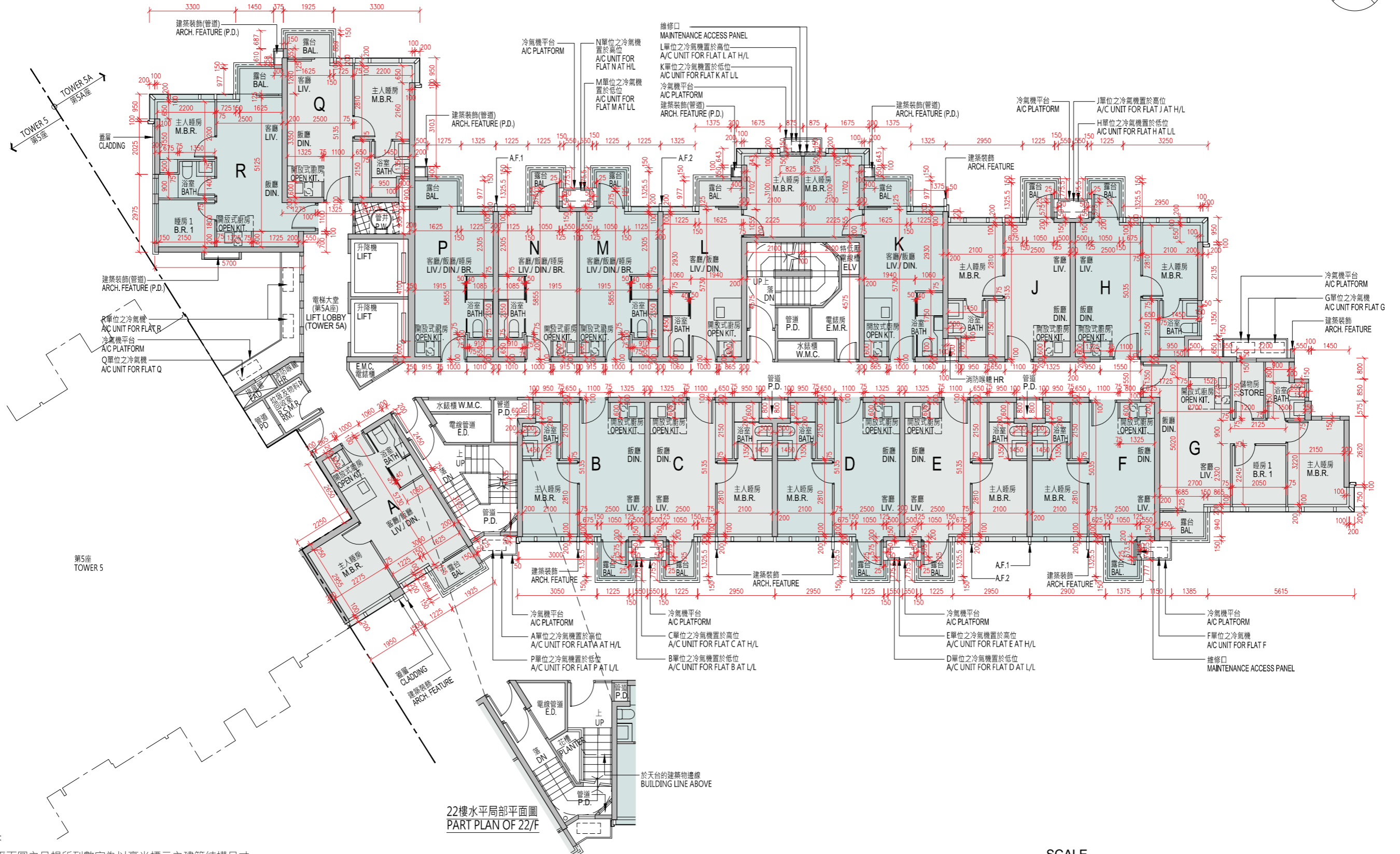
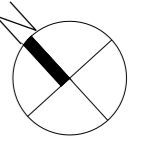
# 10 期數的住宅物業的樓面平面圖

## FLOOR PLANS OF RESIDENTIAL PROPERTIES IN THE PHASE

第5A座 Tower 5A

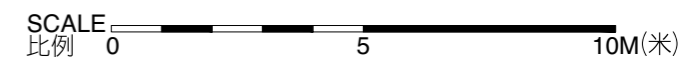
2樓至3樓、5樓至12樓、15樓至22樓

2/F-3/F, 5/F-12/F, 15/F-22/F



22樓水平局部平面圖  
PART PLAN OF 22/F

備註：  
樓面平面圖之尺規所列數字為以毫米標示之建築結構尺寸。  
Note:  
The dimensions of the floor plans are all structural dimension in millimeter.







# 10 期數的住宅物業的樓面平面圖

## FLOOR PLANS OF RESIDENTIAL PROPERTIES IN THE PHASE

	樓層 Floor	單位 Flats															
		A	B	C	D	E	F	G	H	J	K	L	M	N	P	Q	R
每個住宅物業的樓板(不包括灰泥)的厚度(毫米) The thickness of the floor slabs (excluding plaster) of each residential property (mm)	2樓至3樓、 5樓至12樓、 15樓至21樓 2/F-3/F, 5/F-12/F, 15/F-21/F	150															
每個住宅物業的層與層之間的高度(指該樓層之石屎地台面與上一層石屎地台面之高度距離)(毫米) The floor-to-floor height (i.e. the height between the top surface of the structural slab of a floor and the top surface of the structural slab of its immediate upper floor) of each residential property (mm)		3150	3150	3150	3150	3150	3150	3150	3150	3150	3150	3150	3150	3150	3150	3150	3150
每個住宅物業的樓板(不包括灰泥)的厚度(毫米) The thickness of the floor slabs (excluding plaster) of each residential property (mm)	22樓 22/F	150, 200															
每個住宅物業的層與層之間的高度(指該樓層之石屎地台面與上一層石屎地台面之高度距離)(毫米) The floor-to-floor height (i.e. the height between the top surface of the structural slab of a floor and the top surface of the structural slab of its immediate upper floor) of each residential property (mm)		3150, 3200, 3450	3150, 3200, 3450	3150, 3200, 3450	3150, 3200, 3450	3150, 3200, 3450	3150, 3200, 3450	3150, 3200, 3400, 3450	3150, 3200, 3400, 3450	3150, 3200, 3450	3150, 3200, 3450	3150, 3200, 3450	3150, 3200, 3450	3150, 3200, 3450	3150, 3200, 3450	3150, 3200, 3450	3150, 3200, 3350, 3450

1. 因住宅物業的較高樓層的結構牆的厚度遞減，較高樓層的內部面積，一般比較低樓層的內部面積稍大。
2. 以上平面圖中顯示之名詞、簡稱及其適用的附註，請參閱本售樓說明書第26頁。

1. The internal areas of the residential properties on the upper floors will generally be slightly larger than those on the lower floors because of the reducing thickness of the structural walls on the upper floors.
2. Please refer to page 26 of this sales brochure for legend of the terms and abbreviations shown on the floor plan above and the explanatory notes that are applicable thereto.