


發展項目的鳥瞰照片 Aerial photograph of the development



摘錄自地政總署測繪處於2018年3月10日在6,000呎飛行高度拍攝之鳥瞰照片，編號為E034154C。
Extracted from the aerial photograph taken by the Survey and Mapping Office of Lands Department at a flying height of 6,000 feet, Photo No. E034154C, dated 10th March 2018.

 發展項目的位置
Location of the development

香港特別行政區政府地政總署測繪處©版權所有，未經許可，不得複製。
Survey and Mapping Office, Lands Department, The Government of HKSAR ©Copyright reserved – reproduction by permission only.

備註 Notes :

因技術原因(例如發展項目之不規則形狀)，鳥瞰照片所顯示之範圍多於《一手住宅物業銷售條例》所要求。
Due to technical reasons (such as the irregular shape of the Development), the aerial photograph has shown more than the area required under the Residential Properties (First-hand Sales) Ordinance.

賣方亦建議買方到有關發展地盤作實地考察，以對該發展地盤、其周邊地區環境及附近的公共設施有較佳了解。
The Vendor also advises purchasers to conduct on-site visit for a better understanding of the development site, its surrounding environment and the public facilities nearby.

發展項目的鳥瞰照片 Aerial photograph of the development

鳥瞰照片並不
覆蓋本空白範圍
This blank area
falls outside the
coverage of the
aerial photograph



摘錄自地政總署測繪處於2019年1月23日在6,900呎飛行高度拍攝之鳥瞰照片，編號為E053637C。
Extracted from the aerial photograph taken by the Survey and Mapping Office of Lands Department at a flying height of 6,900 feet, Photo No. E053637C, dated 23rd January 2019.

發展項目的位置
Location of the development

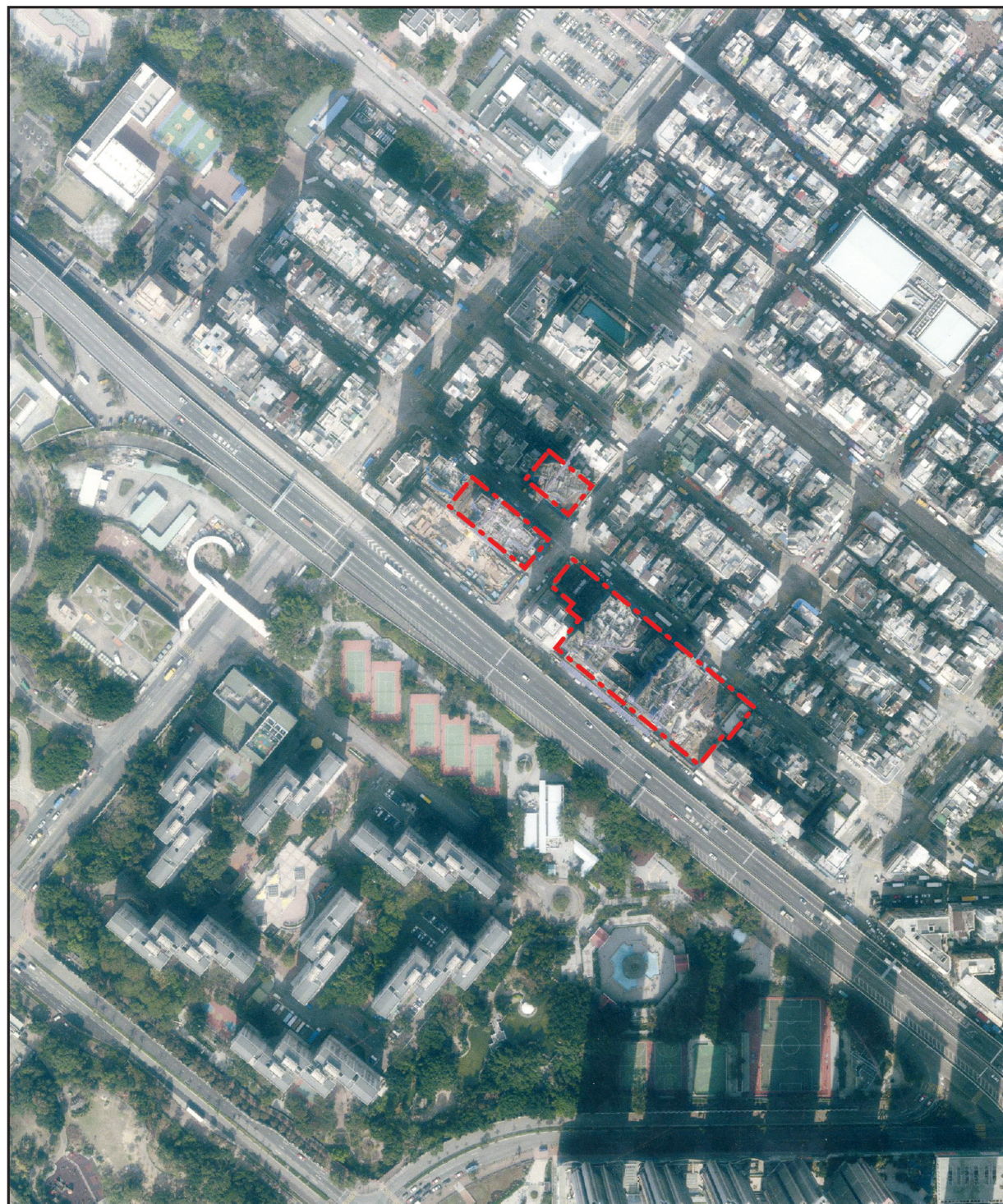
香港特別行政區政府地政總署測繪處©版權所有，未經許可，不得複製。
Survey and Mapping Office, Lands Department, The Government of HKSAR ©Copyright reserved – reproduction by permission only.

備註 Notes :

因技術原因(例如發展項目之不規則形狀)，鳥瞰照片所顯示之範圍多於《一手住宅物業銷售條例》所要求。
Due to technical reasons (such as the irregular shape of the Development), the aerial photograph has shown more than the area required under the Residential Properties (First-hand Sales) Ordinance.

賣方亦建議買方到有關發展地盤作實地考察，以對該發展地盤、其周邊地區環境及附近的公共設施有較佳了解。
The Vendor also advises purchasers to conduct on-site visit for a better understanding of the development site, its surrounding environment and the public facilities nearby.

發展項目的鳥瞰照片 Aerial photograph of the development



摘錄自地政總署測繪處於2019年1月23日在6,900呎飛行高度拍攝之鳥瞰照片，編號為E053638C。
Extracted from the aerial photograph taken by the Survey and Mapping Office of Lands Department at a flying height of 6,900 feet, Photo No. E053638C, dated 23rd January 2019.

鳥瞰照片並不
覆蓋本空白範圍
This blank area
falls outside the
coverage of the
aerial photograph

發展項目的位置
Location of the development

香港特別行政區政府地政總署測繪處©版權所有，未經許可，不得複製。
Survey and Mapping Office, Lands Department, The Government of HKSAR ©Copyright reserved – reproduction by permission only.

備註 Notes :

因技術原因(例如發展項目之不規則形狀)，鳥瞰照片所顯示之範圍多於《一手住宅物業銷售條例》所要求。
Due to technical reasons (such as the irregular shape of the Development), the aerial photograph has shown more than the area required under the Residential Properties (First-hand Sales) Ordinance.

賣方亦建議買方到有關發展地盤作實地考察，以對該發展地盤、其周邊地區環境及附近的公共設施有較佳了解。
The Vendor also advises purchasers to conduct on-site visit for a better understanding of the development site, its surrounding environment and the public facilities nearby.