

11 FLOOR PLANS OF RESIDENTIAL PROPERTIES IN THE DEVELOPMENT

發展項目的住宅物業的樓面平面圖

GLOSSARY 詞彙表

A/C = Air-conditioner = 冷氣機

A/C PLATFORM = Air-conditioner Platform = 冷氣機平台

A/C PLATFORM FOR FLAT A = Air-conditioner Platform for Flat A = 單位A的冷氣機平台

A/C PLATFORM FOR FLAT B = Air-conditioner Platform for Flat B = 單位B的冷氣機平台

A/C PLATFORM FOR FLAT C = Air-conditioner Platform for Flat C = 單位C的冷氣機平台

A/C PLATFORM FOR FLAT G = Air-conditioner Platform for Flat G = 單位G的冷氣機平台

A/C PLATFORM FOR FLAT G of Tower 1A = Air-conditioner Platform for Flat G of Tower 1A = 第1A座之單位G的冷氣機平台

A/C PLATFORM FOR FLAT G of Tower 1B = Air-conditioner Platform for Flat G of Tower 1B = 第1B座之單位G的冷氣機平台

A/C PLATFORM FOR FLAT H = Air-conditioner Platform for Flat H = 單位H的冷氣機平台

A.F. = Architectural Feature = 建築裝飾

A.F. ABOVE = Architectural Feature Above = 上層建築裝飾

A.F. ABOVE AT 6/F ONLY = Architectural Feature Above at 6/F only = 上層建築裝飾只設於6樓

A.F. ABOVE AT 39/F ONLY = Architectural Feature Above at 39/F only = 上層建築裝飾只設於39樓

A.F. ABOVE AT 40/F ONLY = Architectural Feature Above at 40/F only = 上層建築裝飾只設於40樓

A.F. AT 6/F, 10/F, 15/F, 19/F, 23/F, 28/F, 32/F & 37/F = Architectural Feature at 6/F, 10/F, 15/F, 19/F, 23/F, 28/F, 32/F & 37/F = 建築裝飾設於6樓、10樓、15樓、19樓、23樓、28樓、32樓及37樓

A.F. AT 7/F, 11/F, 16/F, 20/F, 25/F, 29/F, 33/F & 38/F = Architectural Feature at 7/F, 11/F, 16/F, 20/F, 25/F, 29/F, 33/F & 38/F = 建築裝飾設於7樓、11樓、16樓、20樓、25樓、29樓、33樓及38樓

AD = Air Duct = 風槽

ALUM. CLADDING = Aluminium Cladding = 鋁質蓋板

ALUM. CLADDING AT 2/F, 5/F, 7/F, 9/F, 11/F, 16/F, 18/F, 20/F, 22/F, 25/F, 27/F, 29/F, 31/F, 33/F, 36/F & 38/F = Aluminium Cladding at 2/F, 5/F, 7/F, 9/F, 11/F, 16/F, 18/F, 20/F, 22/F, 25/F, 27/F, 29/F, 31/F, 33/F, 36/F & 38/F = 鋁質蓋板設於2樓、5樓、7樓、9樓、11樓、16樓、18樓、20樓、22樓、25樓、27樓、29樓、31樓、33樓、36樓及38樓

ALUM. CLADDING AT 3/F, 6/F, 8/F, 10/F, 12/F, 15/F, 17/F, 19/F, 21/F, 23/F, 26/F, 28/F, 30/F, 32/F, 35/F, 37/F & 39/F = Aluminium Cladding at 3/F, 6/F, 8/F, 10/F, 12/F, 15/F, 17/F, 19/F, 21/F, 23/F, 26/F, 28/F, 30/F, 32/F, 35/F, 37/F & 39/F = 鋁質蓋板設於3樓、6樓、8樓、10樓、12樓、15樓、17樓、19樓、21樓、23樓、26樓、28樓、30樓、32樓、35樓、37樓及39樓

ALUM. CLADDING AT 6/F, 8/F, 10/F, 12/F, 15/F, 17/F, 19/F, 21/F, 23/F, 26/F, 28/F, 30/F, 32/F, 35/F, 37/F & 39/F = Aluminium Cladding at 6/F, 8/F, 10/F, 12/F, 15/F, 17/F, 19/F, 21/F, 23/F, 26/F, 28/F, 30/F, 32/F, 35/F, 37/F & 39/F = 鋁質蓋板設於6樓、8樓、10樓、12樓、15樓、17樓、19樓、21樓、23樓、26樓、28樓、30樓、32樓、35樓、37樓及39樓

ALUM. CLADDING AT 7/F, 9/F, 11/F, 16/F, 18/F, 20/F, 22/F, 25/F, 27/F, 29/F, 31/F, 33/F, 36/F, 38/F & 40/F = Aluminium Cladding at 7/F, 9/F, 11/F, 16/F, 18/F, 20/F, 22/F, 25/F, 27/F, 29/F, 31/F, 33/F, 36/F, 38/F & 40/F = 鋁質蓋板設於7樓、9樓、11樓、16樓、18樓、20樓、22樓、25樓、27樓、29樓、31樓、33樓、36樓、38樓及40樓

BAL. = Balcony = 露台

BAL. ABOVE = Balcony Above = 上層露台

BATH = Bathroom = 浴室

BATH.1 = BATH(1) = Bathroom 1 = 浴室1

BATH.2 = BATH(2) = Bathroom 2 = 浴室2

BATH.3 = BATH(3) = Bathroom 3 = 浴室3

B.R.1 = Bedroom 1 = 睡房1

B.R.2 = Bedroom 2 = 睡房2

B.R.3 = Bedroom 3 = 睡房3

CANOPY = 簷篷

COMMON FLAT ROOF = 公用平台

COMMON PASSAGE = 公用通道

CLADDING ABOVE = 上層蓋板

CD = Cable Duct = 電纜槽

DAVIT ARM BRACKET = 吊臂托架

DN = D.N. = Down = 落

DOGHOUSE = 機電小屋

ELV = Extra Low Voltage = 特低壓電線

EMC = Electric Meter Cabinet = 電錶箱

E.M.R. = EMR = Electric Meter Room = 電錶房

FLAT ROOF = 平台

FH = Fire Hydrant = 消防栓

FLUSHING WATER PUMP RM. = Flushing Water Pump Room = 沖廁水水泵房

FLUSHING WATER PUMP AND WATER TANKS FOR T2 UV1 & UV2 & RECREATIONAL FACILITIES = Flushing Water Pump and Water Tanks for Tower 2, Urban Villa 1 & Urban Villa 2 & Recreational Facilities = 第2座、都會城邸1及都會城邸2，康樂設施之沖廁水水泵及水缸房

GARDEN = 花園

GARDEN FENCE = 花園圍牆

GARDEN MANSION 1 = 花園洋房1

GARDEN MANSION 2 = 花園洋房2

GARDEN MANSION 3 = 花園洋房3

GARDEN MANSION 5 = 花園洋房5

GLASS CLADDING = 玻璃蓋板

GLASS CANOPY = 玻璃簷篷

GLASS CANOPY ABOVE = 上層玻璃簷篷

GREEN ROOF = 綠化天台

HATCH DOOR = 艙門

H.R. = HR = Hose Reel = 消防喉轆

INACCESSIBLE VOID = 無法到達之中空位置

INACCESSIBLE R.C. COVER FOR BAL. BELOW = Inaccessible Reinforced Concrete Cover for Balcony Below = 無法到達之下層露台之鋼筋混凝土頂蓋

JACUZZI = 按摩浴缸

KIT. = Kitchen = 廚房

LAV. = Lavatory = 洗手間

LIFT = 升降機

LIFT LOBBY = 升降機大堂

LIFT MACHINE ROOM = 電梯機房

LIFT PLATFORM = 電梯平台

LIFT SHAFT = 升降機槽

LIV. & DIN. = Living and Dining Room = 客飯廳

M.B.R. = Master Bedroom = 主人睡房

M.BATH = Master Bathroom = 主人浴室

M.BATH1 = M.Bath(1) = Master Bathroom 1 = 主人浴室1

OPEN KIT. = Open Kitchen = 開放式廚房

P.D. = PD = Pipe Duct = 管道槽

P.R. = Powder Room = 化粧間

PARAPET = 護牆

PIPE SCREEN = 管道屏幕

PIPE DUCT ROOM = 管道房

POTABLE WATER PUMP ROOM = 食水泵房

GLOSSARY 詞彙表

POTABLE WATER PUMP & TANK ROOM = 食水泵及缸房

R.C. COVER FOR BAL. BELOW = Reinforced Concrete Cover For Balcony Below = 下層露台之鋼筋混凝土頂蓋

R.C. COVER FOR U.P. BELOW = Reinforced Concrete Cover For Utility Platform Below = 下層工作平台之鋼筋混凝土頂蓋

R.C. COLD WATER TWIN TANK FOR T1 = Reinforced Concrete Cold Water Twin Tank For Tower 1 = 第1座之鋼筋混凝土冷水孖水缸

ROOF = 天台

ROOF OF LIFT SHAFT = 升降機槽頂蓋

RS/MRR = Refuse Storage and Material Recovery Room = 垃圾及物料回收房

ST. = Store = 儲物室

STUDY RM. = Study Room = 書房

STAIRHOOD = 梯屋

STONE CLADDING = 石材蓋板

T.R.S. = TRS = Temporary Refuge Space = 臨時庇護處

TEL = Telephone Duct = 電話線槽

Tower 1 (Tower 1A) = 第1座 (1A座)

Tower 1 (Tower 1B) = 第1座 (1B座)

Tower 2 (Tower 2A) = 第2座 (2A座)

Tower 2 (Tower 2B) = 第2座 (2B座)

TRANSFER PLATE = 轉換層

TRANSFER PLATE ABOVE = 轉換層置上

U. = Utility = 工作間

URBAN VILLA 1 = 都會城邸1

URBAN VILLA 2 = 都會城邸2

U.P. = Utility Platform = 工作平台

UP = 上

WMC = Water Meter Cabinet = 水錶箱

WMR = Water Meter Room = 水錶房

Remarks applicable to the floor plans of this section:

1. The dimensions of the floors plans are all structural dimensions in millimetres.
2. Balcony and Utility Platform are Non-enclosed Areas.
3. There may be architectural features and/or exposed pipes on external walls of some of the floors. For details, please refer to the latest approved general building plans and other relevant plans.
4. Common drain pipes enclosed in cladding are located adjacent to Balcony and/or Utility Platform of some residential properties.
5. There may be conduits for air-conditioning, other conduits and/or Mechanical & Electrical services concealed by ceiling bulkheads or false ceilings in a residential property.
6. There are non-structural prefabricated external walls in the residential properties. The Saleable Area as defined in the formal Agreement for Sale and Purchase of a residential property has included the non-structural prefabricated external walls and is measured from the exterior of such non-structural prefabricated external walls.
7. The indications of fittings such as sinks, toilet bowls, bathtubs, wash basins etc. show on the floor plan are indications of their approximate locations only and not indications of their actual size, designs and shapes.

適用於本節各樓面平面圖之備註：

1. 樓面平面圖之尺寸所列數字為以毫米標示之建築結構尺寸。
2. 露台及工作平台為不可封閉之地方。
3. 部份樓層外牆範圍設有建築裝飾及/或外露喉管，詳細資料請參考最後批准之總建築圖則及其他相關圖則。
4. 部份住宅物業的露台及/或工作平台側外牆裝飾板內藏公用去水渠。
5. 住宅物業內裝飾橫樑或假天花內可能藏有冷氣喉管、其他喉管及/或機電設備。
6. 單位有非結構預製外牆。買賣合約之實用面積之計算包括非結構預製外牆，並由非結構預製外牆之外圍起計。
7. 平面圖所示之裝置如洗滌盤、坐廁、浴缸、面盆等只供展示其大約位置而非展示實際大小、設計及形狀。

11 FLOOR PLANS OF RESIDENTIAL PROPERTIES IN THE DEVELOPMENT

發展項目的住宅物業的樓面平面圖

	Tower 座數	Floor 樓層	Flat 單位						
			A	B	C	D	E	F	G
The thickness of the floor slabs (excluding plaster) of each residential property (mm) 每個住宅物業的樓板(不包括灰泥)的厚度(毫米)	Tower 1A 第1A座	1/F 1樓	150	150, 175	150	150	150	150	150
	Tower 1B 第1B座		150	150, 175	150, 175, 300	150, 175	150	150	150
The floor-to-floor height (refers to the height between the top surface of the structural slab of a floor and the top surface of the structural slab of its immediate upper floor) of each residential property (mm) 每個住宅物業的層與層之間的高度 (指該樓層之石屎地台面與上一層石屎地台面之高度距離)(毫米)	Tower 1A 第1A座		3050, 3200, 3300, 3500, 3550	3050, 3200, 3275, 3500, 3550	2700, 3050, 3200, 3500, 3550	3050, 3200, 3300, 3500, 3550	3050, 3200, 3250, 3500, 3550	3050, 3200, 3300, 3500, 3550	3050, 3200, 3300, 3500, 3550
	Tower 1B 第1B座		3050, 3200, 3300, 3500, 3550	2700, 3050, 3200, 3550	2650, 3050, 3150, 3200, 3500, 3550	3050, 3200, 3300, 3500, 3550	3050, 3200, 3300, 3500, 3550	3050, 3200, 3300, 3500, 3550	3050, 3200, 3300, 3500, 3550

The internal areas of the residential properties on the upper floors will generally be slightly larger than those on the lower floors because of the reducing thickness of the structural walls on the upper floors. (Note: This statement required in Section 10(2)(e) in Part 1 of Schedule 1 of the Residential Properties (First-hand Sales) Ordinance (Cap.621) is not applicable to the Development)

因住宅物業的較高樓層的結構牆的厚度遞減，較高樓層的内部面積，一般比較低樓層的内部面積稍大。(註：此乃根據《一手住宅物業銷售條例》(第621章)附表1第1部第10(2)(e)條所規定的陳述並不適用於發展項目)

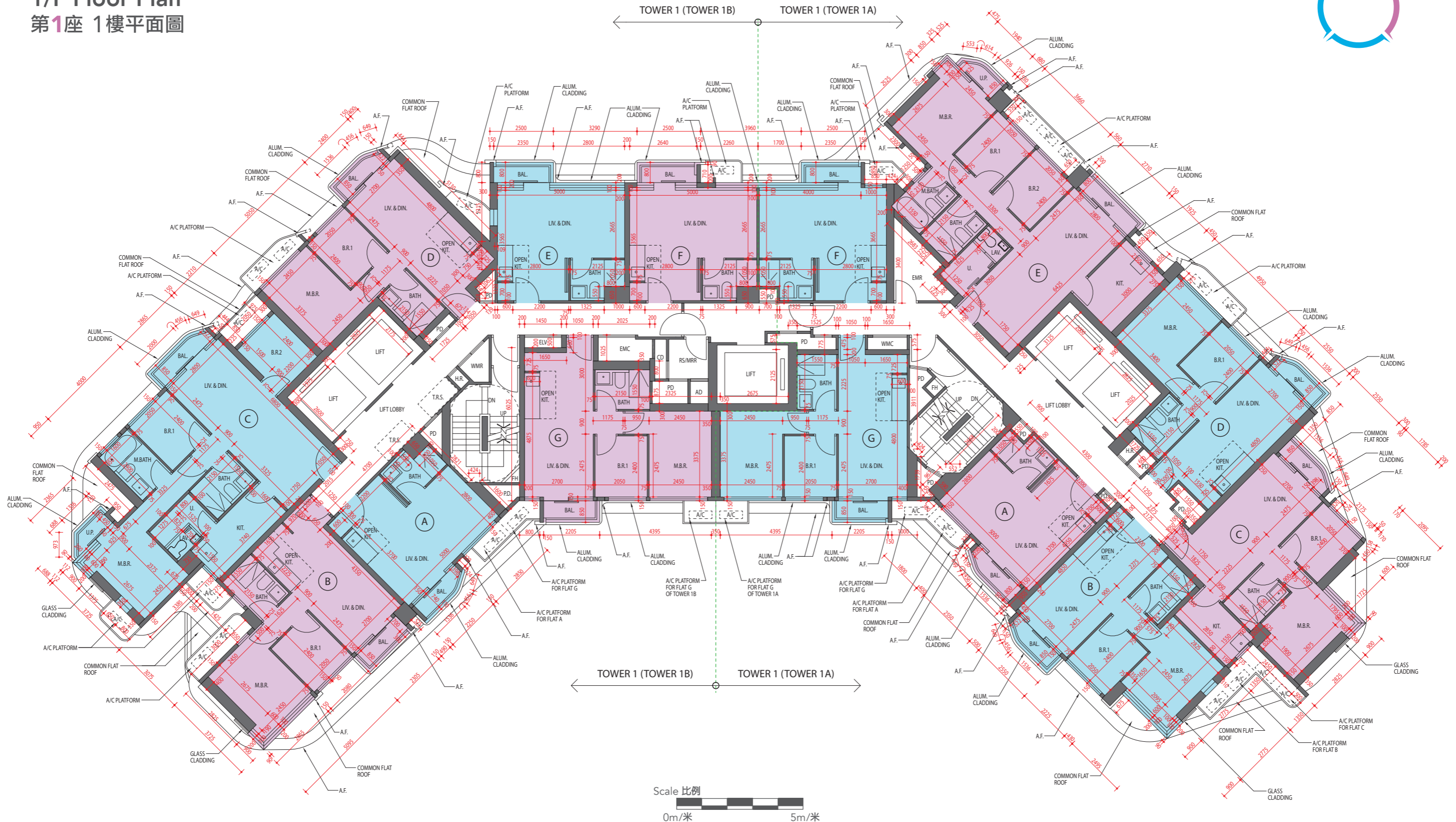
Note:
4/F, 13/F, 14/F, 24/F and 34/F are omitted.

註：
不設4樓、13樓、14樓、24樓及34樓。

TOWER 1

1/F Floor Plan

第1座 1樓平面圖



11 FLOOR PLANS OF RESIDENTIAL PROPERTIES IN THE DEVELOPMENT

發展項目的住宅物業的樓面平面圖

	Tower 座數	Floor 樓層	Flat 單位						
			A	B	C	D	E	F	G
The thickness of the floor slabs (excluding plaster) of each residential property (mm) 每個住宅物業的樓板 (不包括灰泥) 的厚度 (毫米)	Tower 1A 第1A座	2/F - 38/F 2樓至38樓	150	150, 175	150	150	150	150	150
		39/F 39樓	150	150, 175	150, 300	150	150, 300	150	150
	Tower 1B 第1B座	2/F - 11/F, 15/F - 38/F 2樓至11樓、15樓至38樓	150	150, 175	150, 175, 300	150, 175	150	150	150
		39/F 39樓	150	150, 300	150, 175, 300	150, 175	150	150	150
The floor-to-floor height (refers to the height between the top surface of the structural slab of a floor and the top surface of the structural slab of its immediate upper floor) of each residential property (mm) 每個住宅物業的層與層之間的高度 (指該樓層之石屎地台面與上一層石屎地台面之高度距離) (毫米)	Tower 1A 第1A座	2/F - 11/F, 15/F - 38/F 2樓至11樓、15樓至38樓	3050	3050	3050	3050	3050	3050	3050
		12/F 12樓	3050, 3100, 3300, 3400	3050, 3100, 3325, 3400	3050, 3100, 3400	3050, 3100, 3300, 3400	3050, 3100, 3350, 3400	3050, 3100, 3300, 3400	3050, 3100, 3300, 3400
		39/F 39樓	2925, 2975, 3325, 3375, 3575, 3675	2925, 3050, 3200, 3325, 3375, 3675	2750, 3050, 3100, 3325, 3400	3050, 3325, 3375, 3575, 3675	2750, 3050, 3100, 3325, 3350, 3400	3325, 3375, 3575, 3675	3325, 3375, 3575, 3675
	Tower 1B 第1B座	2/F - 11/F, 15/F - 38/F 2樓至11樓、15樓至38樓	3050	3050	3050	3050	3050	3050	3050
		12/F 12樓	3050, 3100, 3300, 3400	3050, 3400	3050, 3100, 3400, 3450	3050, 3100, 3300, 3400	3050, 3100, 3300, 3400	3050, 3100, 3300, 3400	3050, 3100, 3300, 3400
		39/F 39樓	2975, 3025, 3075, 3325, 3375, 3575, 3675, 3725	2750, 2975, 3050, 3325, 3400, 3675	2650, 3050, 3100, 3325, 3375, 3400, 3450, 3675	3050, 3100, 3275, 3300, 3325, 3375, 3400, 3575, 3675	3325, 3375, 3575, 3675	2975, 3325, 3375, 3575, 3675	3075, 3325, 3375, 3575, 3675

The internal areas of the residential properties on the upper floors will generally be slightly larger than those on the lower floors because of the reducing thickness of the structural walls on the upper floors. (Note: This statement required in Section 10(2)(e) in Part 1 of Schedule 1 of the Residential Properties (First-hand Sales) Ordinance (Cap.621) is not applicable to the Development)

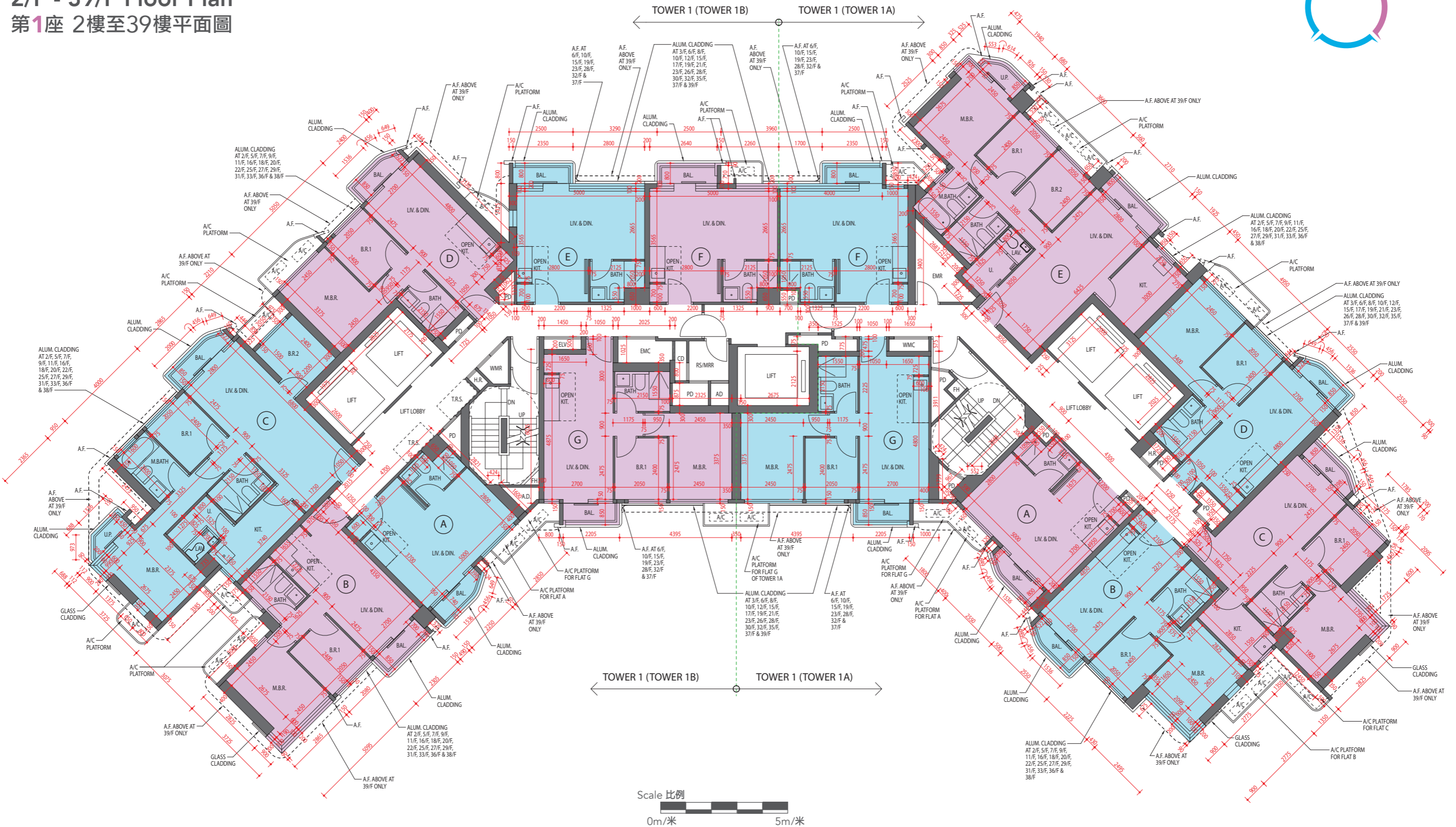
因住宅物業的較高樓層的結構牆的厚度遞減，較高樓層的内部面積，一般比較低樓層的内部面積稍大。(註：此乃根據《一手住宅物業銷售條例》(第621章)附表1第10(2)(e)條所規定的陳述並不適用於發展項目)

Note:
4/F, 13/F, 14/F, 24/F and 34/F are omitted.

註：
不設4樓、13樓、14樓、24樓及34樓。

TOWER 1

2/F - 39/F Floor Plan
第1座 2樓至39樓平面圖



11 FLOOR PLANS OF RESIDENTIAL PROPERTIES IN THE DEVELOPMENT

發展項目的住宅物業的樓面平面圖

	Tower 座數	Floor 樓層	Flat 單位	
			A	B
The thickness of the floor slabs (excluding plaster) of each residential property (mm) 每個住宅物業的樓板(不包括灰泥)的厚度(毫米)	Tower 1A 第1A座	40/F 40樓	150, 300	150
	Tower 1B 第1B座		150, 300	150
The floor-to-floor height (refers to the height between the top surface of the structural slab of a floor and the top surface of the structural slab of its immediate upper floor) of each residential property (mm) 每個住宅物業的層與層之間的高度 (指該樓層之石屎地台面與上一層石屎地台面之高度距離)(毫米)	Tower 1A 第1A座		3450, 3500, 3800, 3900	3150, 3450, 3500, 3850
	Tower 1B 第1B座		3175, 3275, 3325, 3575, 3675	3150, 3450, 3500, 3850, 3900

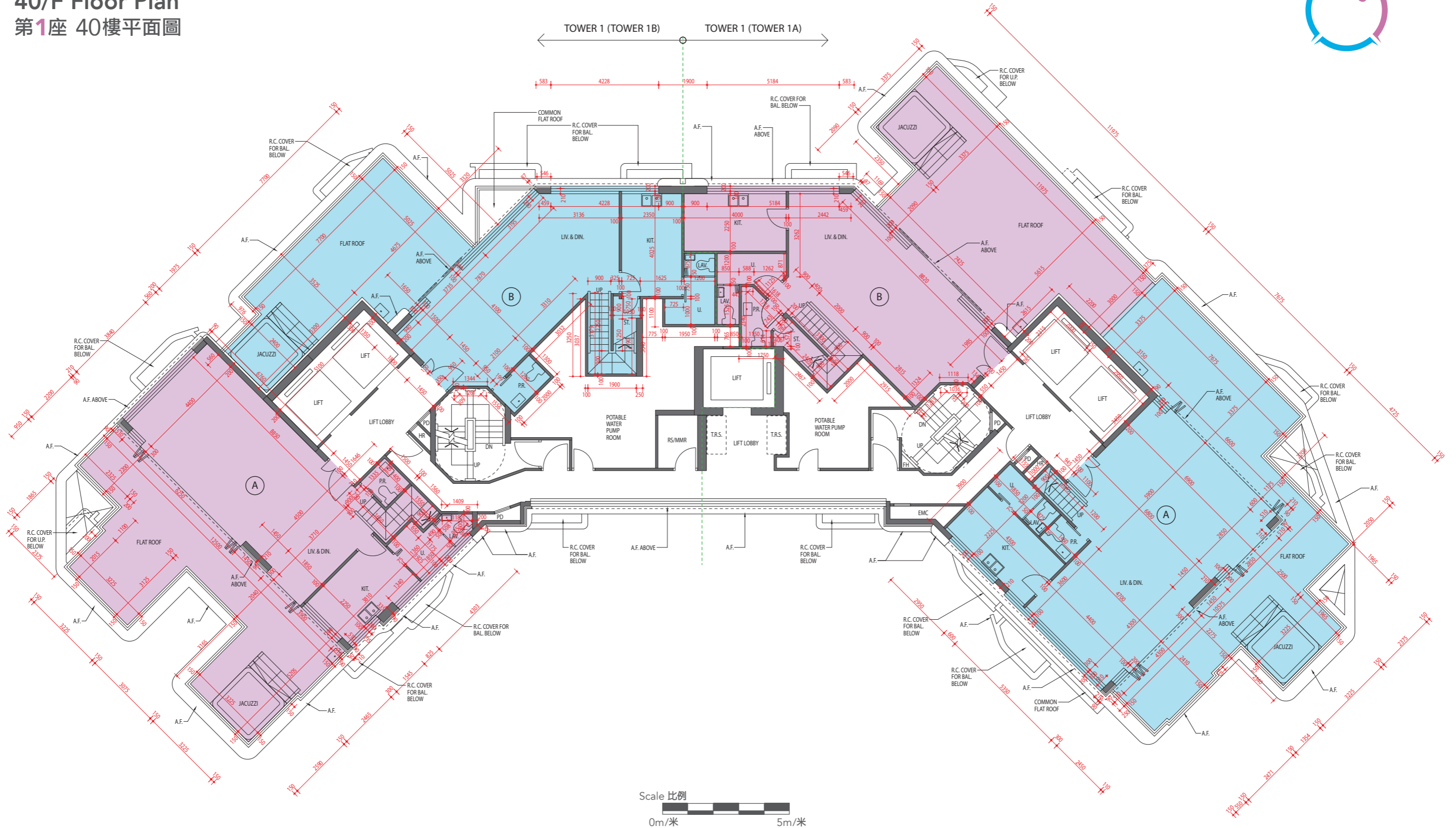
The internal areas of the residential properties on the upper floors will generally be slightly larger than those on the lower floors because of the reducing thickness of the structural walls on the upper floors. (Note: This statement required in Section 10(2)(e) in Part 1 of Schedule 1 of the Residential Properties (First-hand Sales) Ordinance (Cap.621) is not applicable to the Development)

因住宅物業的較高樓層的結構牆的厚度遞減，較高樓層的内部面積，一般比較低樓層的内部面積稍大。(註：此乃根據《一手住宅物業銷售條例》(第621章)附表1第1部第10(2)(e)條所規定的陳述並不適用於發展項目)

Note:
4/F, 13/F, 14/F, 24/F and 34/F are omitted.

註：
不設4樓、13樓、14樓、24樓及34樓。

TOWER 1
40/F Floor Plan
第1座 40樓平面圖



11 FLOOR PLANS OF RESIDENTIAL PROPERTIES IN THE DEVELOPMENT

發展項目的住宅物業的樓面平面圖

	Tower 座數	Floor 樓層	Flat 單位	
			A	B
The thickness of the floor slabs (excluding plaster) of each residential property (mm) 每個住宅物業的樓板(不包括灰泥)的厚度(毫米)	Tower 1A 第1A座	41/F 41樓	150	150
	Tower 1B 第1B座		150	150
The floor-to-floor height (refers to the height between the top surface of the structural slab of a floor and the top surface of the structural slab of its immediate upper floor) of each residential property (mm) 每個住宅物業的層與層之間的高度 (指該樓層之石屎地台面與上一層石屎地台面之高度距離)(毫米)	Tower 1A 第1A座		3325, 3375, 3475, 3625, 3675, 3775	3325, 3375, 3625, 3675
	Tower 1B 第1B座		3500, 3550, 3650, 3800, 3850	3325, 3375, 3625, 3675

The internal areas of the residential properties on the upper floors will generally be slightly larger than those on the lower floors because of the reducing thickness of the structural walls on the upper floors. (Note: This statement required in Section 10(2)(e) in Part 1 of Schedule 1 of the Residential Properties (First-hand Sales) Ordinance (Cap.621) is not applicable to the Development)

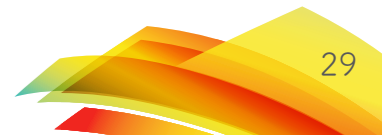
因住宅物業的較高樓層的結構牆的厚度遞減，較高樓層的内部面積，一般比較低樓層的内部面積稍大。(註：此乃根據《一手住宅物業銷售條例》(第621章)附表1第1部第10(2)(e)條所規定的陳述並不適用於發展項目)

Note:
4/F, 13/F, 14/F, 24/F and 34/F are omitted.

註：
不設4樓、13樓、14樓、24樓及34樓。

TOWER 1

41/F Floor Plan
第1座 41樓平面圖



11 FLOOR PLANS OF RESIDENTIAL PROPERTIES IN THE DEVELOPMENT

發展項目的住宅物業的樓面平面圖

	Tower 座數	Floor 樓層	Flat 單位	
			A	B
The thickness of the floor slabs (excluding plaster) of each residential property (mm) 每個住宅物業的樓板（不包括灰泥）的厚度（毫米）	Towers 1A & 1B 第1A及1B座	R/F 天台	N/A 不適用	N/A 不適用
The floor-to-floor height (refers to the height between the top surface of the structural slab of a floor and the top surface of the structural slab of its immediate upper floor) of each residential property (mm) 每個住宅物業的層與層之間的高度 (指該樓層之石屎地台面與上一層石屎地台面之高度距離) (毫米)			N/A 不適用	N/A 不適用

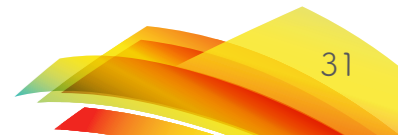
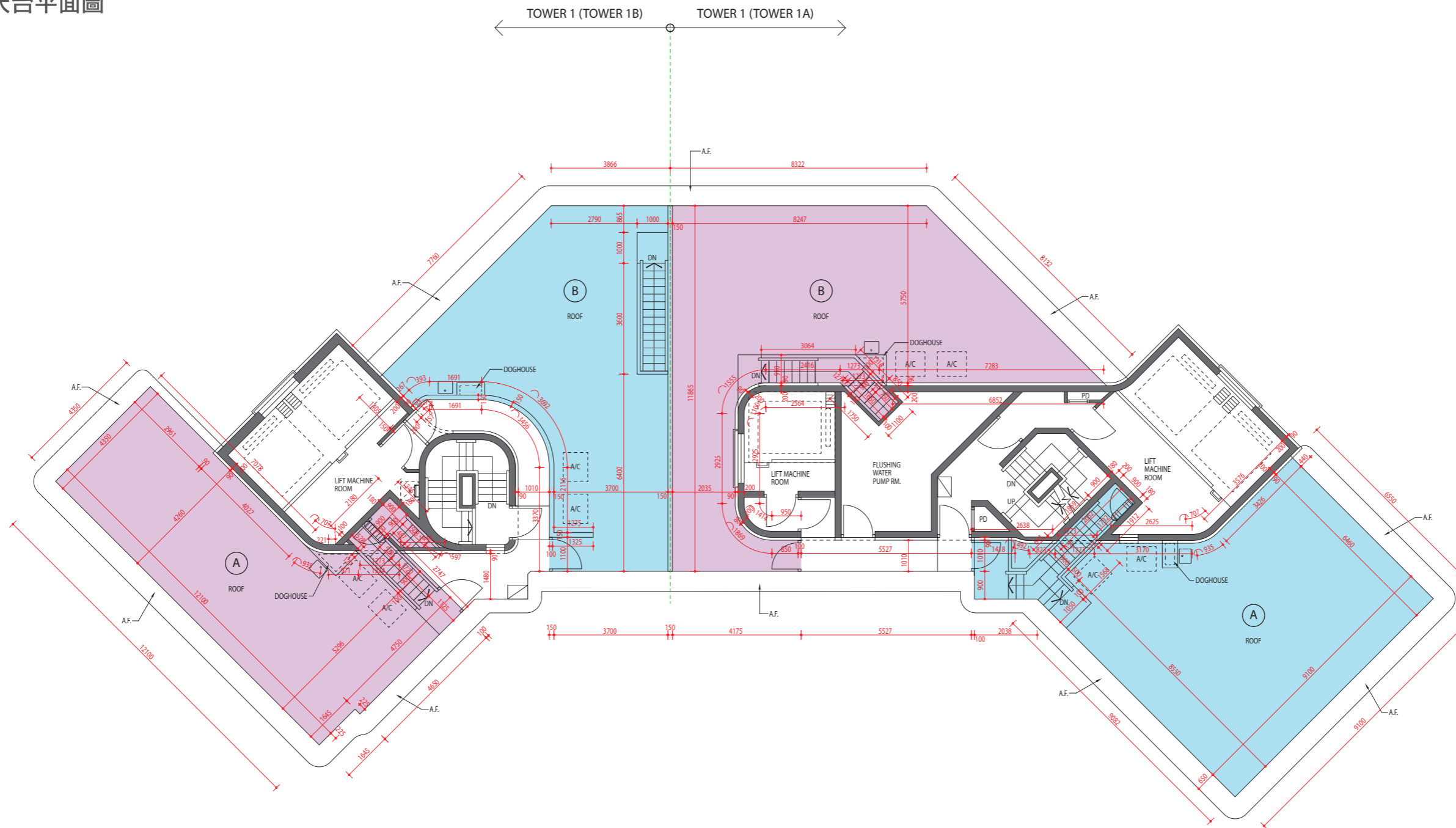
The internal areas of the residential properties on the upper floors will generally be slightly larger than those on the lower floors because of the reducing thickness of the structural walls on the upper floors. (Note: This statement required in Section 10(2)(e) in Part 1 of Schedule 1 of the Residential Properties (First-hand Sales) Ordinance (Cap.621) is not applicable to the Development)

因住宅物業的較高樓層的結構牆的厚度遞減，較高樓層的内部面積，一般比較低樓層的内部面積稍大。(註：此乃根據《一手住宅物業銷售條例》(第621章)附表1第1部第10(2)(e)條所規定的陳述並不適用於發展項目)

Note:
4/F, 13/F, 14/F, 24/F and 34/F are omitted.

註：
不設4樓、13樓、14樓、24樓及34樓。

TOWER 1
Roof Floor Plan
第1座 天台平面圖



11 FLOOR PLANS OF RESIDENTIAL PROPERTIES IN THE DEVELOPMENT

發展項目的住宅物業的樓面平面圖

	Tower 座數	Floor 樓層	Flat 單位					
			A	C	D	E	F	G
The thickness of the floor slabs (excluding plaster) of each residential property (mm) 每個住宅物業的樓板(不包括灰泥)的厚度(毫米)	Tower 2A 第2A座	2/F 2樓	150	150	150	150, 300	150	150
	Tower 2B 第2B座		150	150	150	150, 300	150	N/A 不適用
The floor-to-floor height (refers to the height between the top surface of the structural slab of a floor and the top surface of the structural slab of its immediate upper floor) of each residential property (mm) 每個住宅物業的層與層之間的高度 (指該樓層之石屎地台面與上一層石屎地台面之高度距離)(毫米)	Tower 2A 第2A座		3050, 3200, 3300, 3500, 3550	3050, 3200, 3300, 3500, 3550	3050, 3200, 3250, 3500, 3550	3050, 3200, 3500, 3550	3050, 3200, 3275, 3300, 3500, 3550	3050, 3200, 3275, 3300, 3500, 3550
	Tower 2B 第2B座		3050, 3200, 3300, 3500, 3550	3050, 3200, 3300, 3500, 3550	3050, 3200, 3250, 3500, 3550	3050, 3200, 3500, 3550	3050, 3200, 3275, 3300, 3500, 3550	N/A 不適用

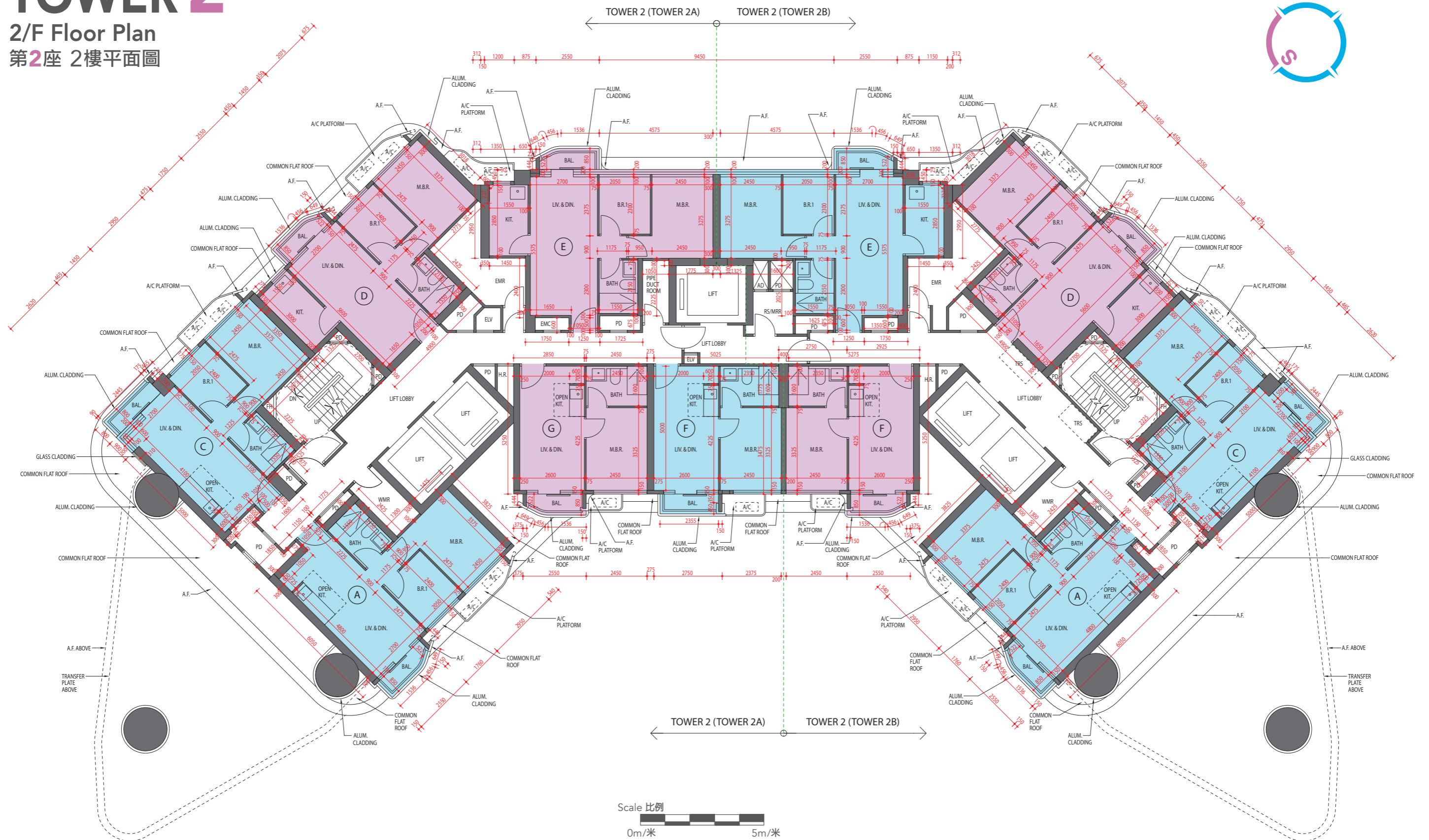
The internal areas of the residential properties on the upper floors will generally be slightly larger than those on the lower floors because of the reducing thickness of the structural walls on the upper floors. (Note: This statement required in Section 10(2)(e) in Part 1 of Schedule 1 of the Residential Properties (First-hand Sales) Ordinance (Cap.621) is not applicable to the Development)

因住宅物業的較高樓層的結構牆的厚度遞減，較高樓層的内部面積，一般比較低樓層的内部面積稍大。(註：此乃根據《一手住宅物業銷售條例》(第621章)附表1第1部第10(2)(e)條所規定的陳述並不適用於發展項目)

Note:
4/F, 13/F, 14/F, 24/F and 34/F are omitted.

註：
不設4樓、13樓、14樓、24樓及34樓。

TOWER 2
2/F Floor Plan
第2座 2樓平面圖



11 FLOOR PLANS OF RESIDENTIAL PROPERTIES IN THE DEVELOPMENT

發展項目的住宅物業的樓面平面圖

	Tower 座數	Floor 樓層	Flat 單位					
			A	C	D	E	F	G
The thickness of the floor slabs (excluding plaster) of each residential property (mm) 每個住宅物業的樓板 (不包括灰泥) 的厚度 (毫米)	Tower 2A 第2A座	3/F 3樓	150	150	150	150, 300	150	150
	Tower 2B 第2B座		150	150	150	150, 300	150	N/A 不適用
The floor-to-floor height (refers to the height between the top surface of the structural slab of a floor and the top surface of the structural slab of its immediate upper floor) of each residential property (mm) 每個住宅物業的層與層之間的高度 (指該樓層之石屎地台面與上一層石屎地台面之高度距離) (毫米)	Tower 2A 第2A座		3050	3050	3050	3050	3050	3050
	Tower 2B 第2B座		3050	3050	3050	3050	3050	N/A 不適用

The internal areas of the residential properties on the upper floors will generally be slightly larger than those on the lower floors because of the reducing thickness of the structural walls on the upper floors. (Note: This statement required in Section 10(2)(e) in Part 1 of Schedule 1 of the Residential Properties (First-hand Sales) Ordinance (Cap.621) is not applicable to the Development)

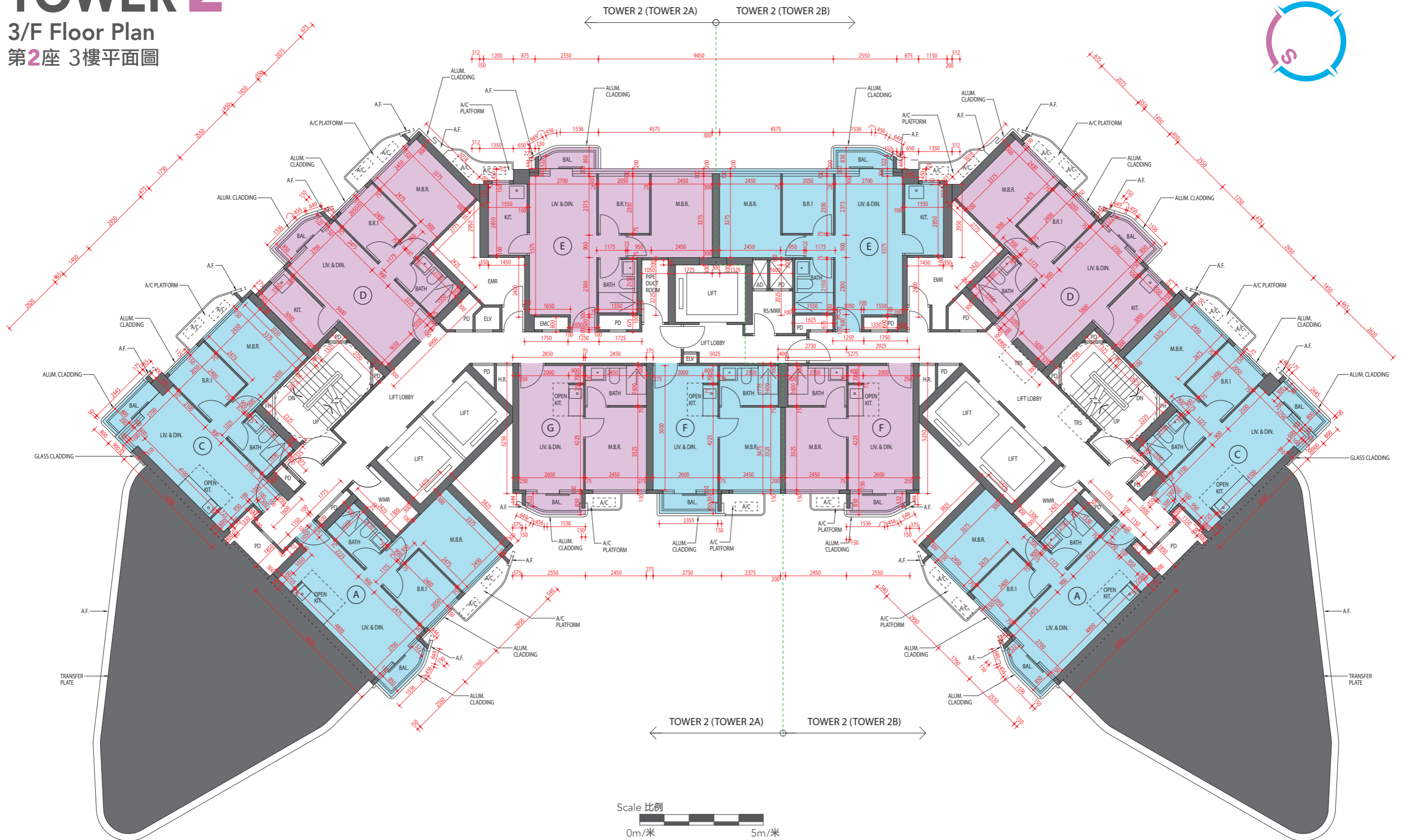
因住宅物業的較高樓層的結構牆的厚度遞減，較高樓層的内部面積，一般比較低樓層的内部面積稍大。(註：此乃根據《一手住宅物業銷售條例》(第621章)附表1第1部第10(2)(e)條所規定的陳述並不適用於發展項目)

Note:
4/F, 13/F, 14/F, 24/F and 34/F are omitted.

註：
不設4樓、13樓、14樓、24樓及34樓。

TOWER 2

3/F Floor Plan 第2座 3樓平面圖



11 FLOOR PLANS OF RESIDENTIAL PROPERTIES IN THE DEVELOPMENT

發展項目的住宅物業的樓面平面圖

	Tower 座數	Floor 樓層	Flat 單位						
			A	B	C	D	E	F	G
The thickness of the floor slabs (excluding plaster) of each residential property (mm) 每個住宅物業的樓板(不包括灰泥)的厚度(毫米)	Tower 2A 第2A座	5/F 5樓	150	150	150	150	150, 300	150	150
	Tower 2B 第2B座		150	150	150	150	150, 300	150	N/A 不適用
The floor-to-floor height (refers to the height between the top surface of the structural slab of a floor and the top surface of the structural slab of its immediate upper floor) of each residential property (mm) 每個住宅物業的層與層之間的高度 (指該樓層之石屎地台面與上一層石屎地台面之高度距離)(毫米)	Tower 2A 第2A座		3050	3200, 3250, 3300, 3500, 3550	3050	3050	3050	3050	3050
	Tower 2B 第2B座		3050	3200, 3250, 3300, 3500, 3550	3050	3050	3050	3050	N/A 不適用

The internal areas of the residential properties on the upper floors will generally be slightly larger than those on the lower floors because of the reducing thickness of the structural walls on the upper floors. (Note: This statement required in Section 10(2)(e) in Part 1 of Schedule 1 of the Residential Properties (First-hand Sales) Ordinance (Cap.621) is not applicable to the Development)

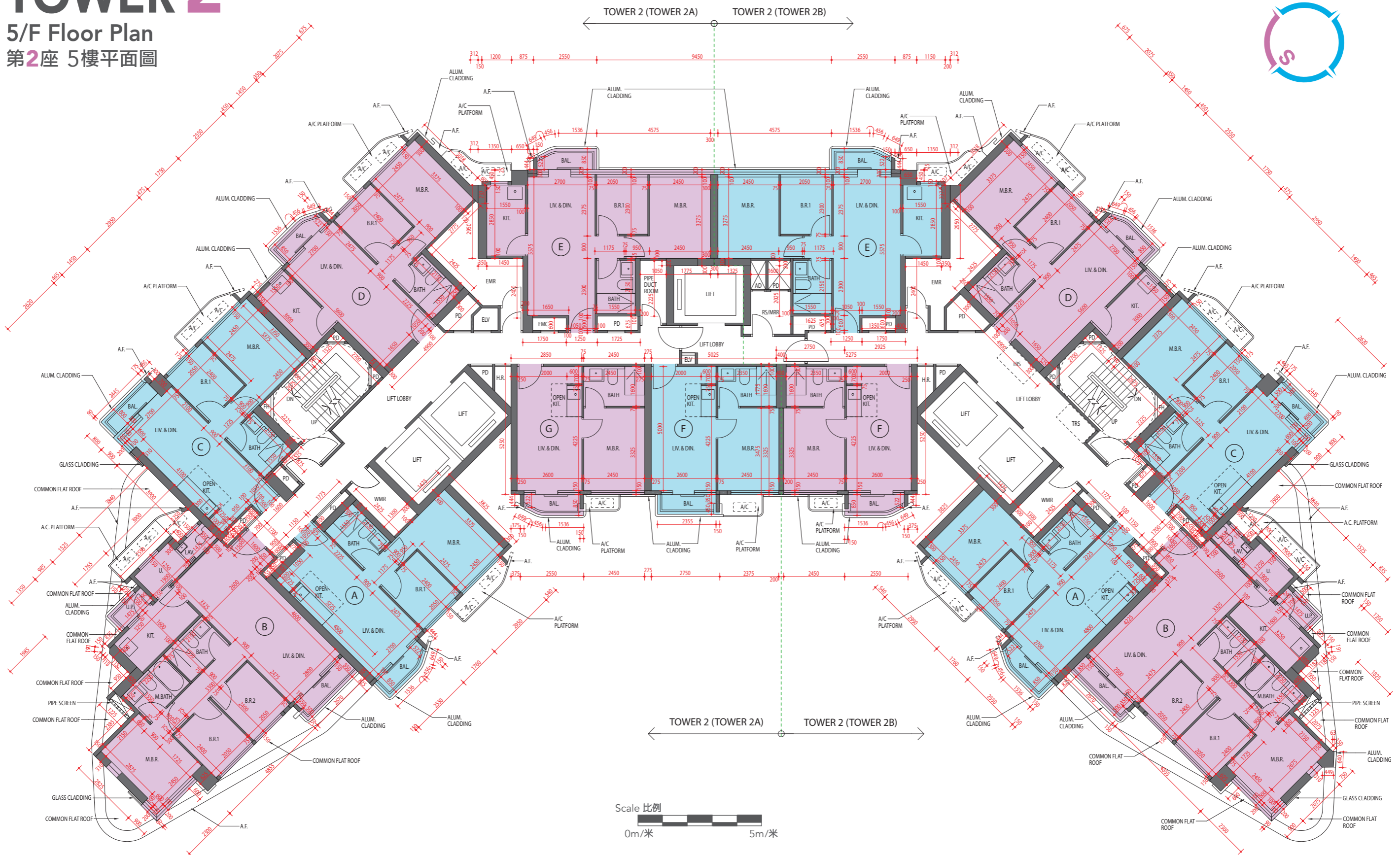
因住宅物業的較高樓層的結構牆的厚度遞減，較高樓層的内部面積，一般比較低樓層的内部面積稍大。(註：此乃根據《一手住宅物業銷售條例》(第621章)附表1第1部第10(2)(e)條所規定的陳述並不適用於發展項目)

Note:
4/F, 13/F, 14/F, 24/F and 34/F are omitted.

註：
不設4樓、13樓、14樓、24樓及34樓。

TOWER 2

5/F Floor Plan 第2座 5樓平面圖



11 FLOOR PLANS OF RESIDENTIAL PROPERTIES IN THE DEVELOPMENT

發展項目的住宅物業的樓面平面圖

	Tower 座數	Floor 樓層	Flat 單位						
			A	B	C	D	E	F	G
The thickness of the floor slabs (excluding plaster) of each residential property (mm) 每個住宅物業的樓板 (不包括灰泥) 的厚度 (毫米)	Tower 2A 第2A座	6/F - 39/F 6樓至39樓	150	150	150	150	150, 300	150	150
		40/F 40樓	150	150	150	150, 300	150, 300	150	150
	Tower 2B 第2B座	6/F - 39/F 6樓至39樓	150	150	150	150	150, 300	150	N/A 不適用
		40/F 40樓	150	150	150	150, 300	150, 300	150	N/A 不適用
The floor-to-floor height (refers to the height between the top surface of the structural slab of a floor and the top surface of the structural slab of its immediate upper floor) of each residential property (mm) 每個住宅物業的層與層之間的高度 (指該樓層之石屎地台面與上一層石屎地台面之高度距離) (毫米)	Tower 2A 第2A座	6/F - 11/F, 15/F - 39/F 6樓至11樓、15樓至39樓	3050	3050	3050	3050	3050	3050	3050
		12/F 12樓	3050, 3100, 3300, 3400	3050, 3100, 3300, 3350, 3400	3050, 3100, 3300, 3400	3050, 3100, 3350, 3400	3050, 3100, 3400	3050, 3100, 3300, 3325, 3400	3050, 3100, 3300, 3325, 3400
		40/F 40樓	2825, 3050, 3325, 3375, 3575, 3675	2825, 3050, 3175, 3275, 3300, 3325, 3375, 3575, 3625	3050, 3100, 3300, 3325, 3375, 3575, 3675	2650, 2925, 2975, 3000, 3050, 3100, 3275, 3325, 3350, 3400	2975, 3275, 3325, 3375, 3675	3250, 3275, 3325, 3375, 3550, 3575, 3675	2925, 3325, 3375, 3575, 3600, 3675
	Tower 2B 第2B座	6/F - 11/F, 15/F - 39/F 6樓至11樓、15樓至39樓	3050	3050	3050	3050	3050	3050	N/A 不適用
		12/F 12樓	3050, 3100, 3300, 3400	3050, 3100, 3300, 3350, 3400	3050, 3100, 3300, 3400	3050, 3100, 3350, 3400	3050, 3100, 3400	3050, 3100, 3300, 3325, 3400	N/A 不適用
		40/F 40樓	2825, 3050, 3325, 3375, 3575, 3675	2825, 3050, 3175, 3275, 3300, 3325, 3375, 3575, 3625	3050, 3100, 3300, 3325, 3375, 3575, 3675	2650, 2925, 2975, 3000, 3050, 3275, 3325, 3350, 3375, 3400, 3675	2925, 3325, 3375, 3675	2975, 3225, 3275, 3325, 3375, 3575, 3600, 3675	N/A 不適用

The internal areas of the residential properties on the upper floors will generally be slightly larger than those on the lower floors because of the reducing thickness of the structural walls on the upper floors. (Note: This statement required in Section 10(2)(e) in Part 1 of Schedule 1 of the Residential Properties (First-hand Sales) Ordinance (Cap.621) is not applicable to the Development)

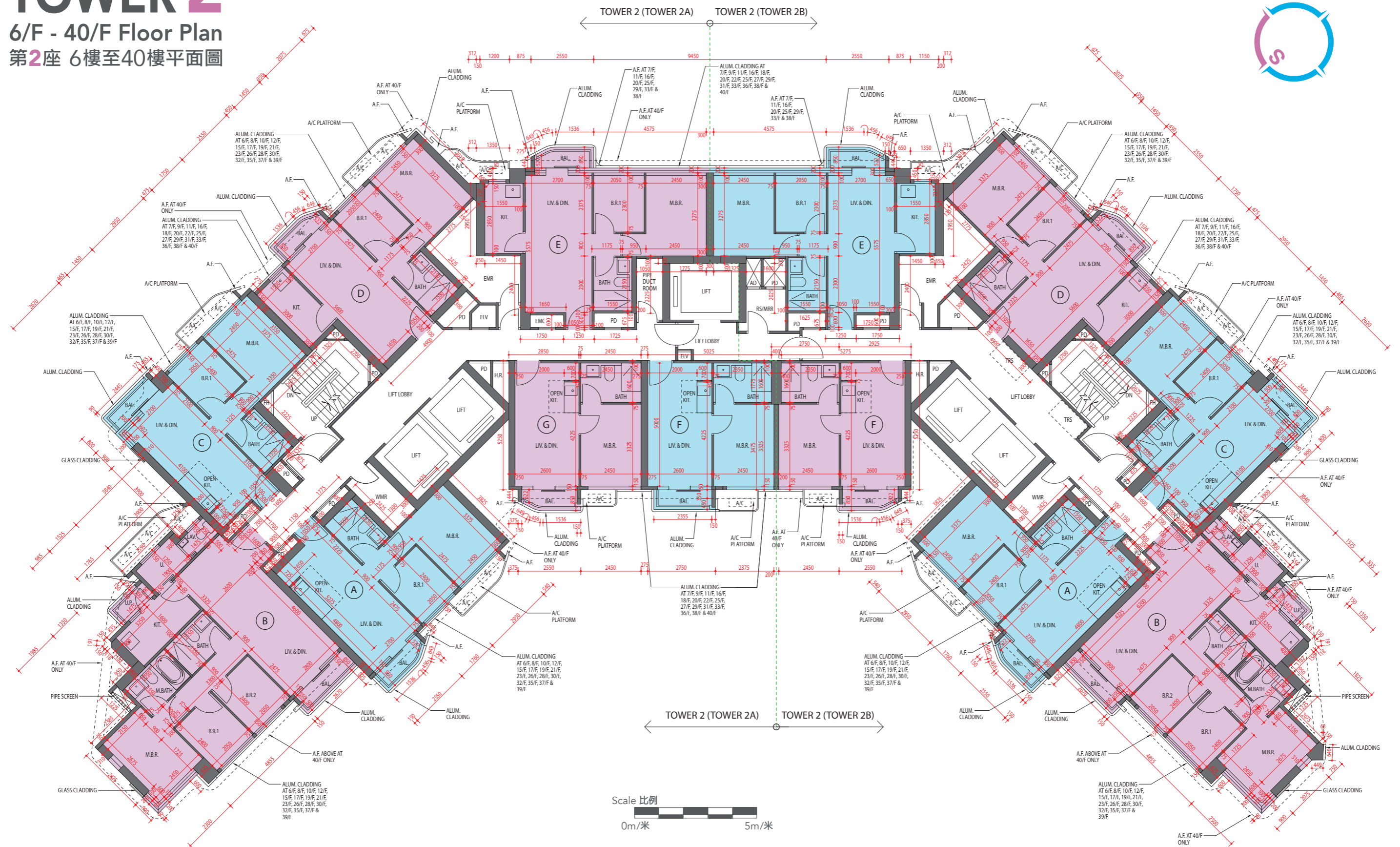
因住宅物業的較高樓層的結構牆的厚度遞減，較高樓層的內部面積，一般比較低樓層的內部面積稍大。(註：此乃根據《一手住宅物業銷售條例》(第621章)附表1第1部第10(2)(e)條所規定的陳述並不適用於發展項目)

Note:
4/F, 13/F, 14/F, 24/F and 34/F are omitted.

註：
不設4樓、13樓、14樓、24樓及34樓。

TOWER 2

6/F - 40/F Floor Plan
第2座 6樓至40樓平面圖



11 FLOOR PLANS OF RESIDENTIAL PROPERTIES IN THE DEVELOPMENT

發展項目的住宅物業的樓面平面圖

	Tower 座數	Floor 樓層	Flat 單位	
			A	B
The thickness of the floor slabs (excluding plaster) of each residential property (mm) 每個住宅物業的樓板 (不包括灰泥) 的厚度 (毫米)	Tower 2A 第2A座	41/F 41樓	150	150
	Tower 2B 第2B座		150	150
The floor-to-floor height (refers to the height between the top surface of the structural slab of a floor and the top surface of the structural slab of its immediate upper floor) of each residential property (mm) 每個住宅物業的層與層之間的高度 (指該樓層之石屎地台面與上一層石屎地台面之高度距離) (毫米)	Tower 2A 第2A座		3500, 3550, 3800, 4000	3500, 3550, 3800, 3850, 4200
	Tower 2B 第2B座		3500, 3550, 3800, 4000	3500, 3550, 3850, 3900, 4200

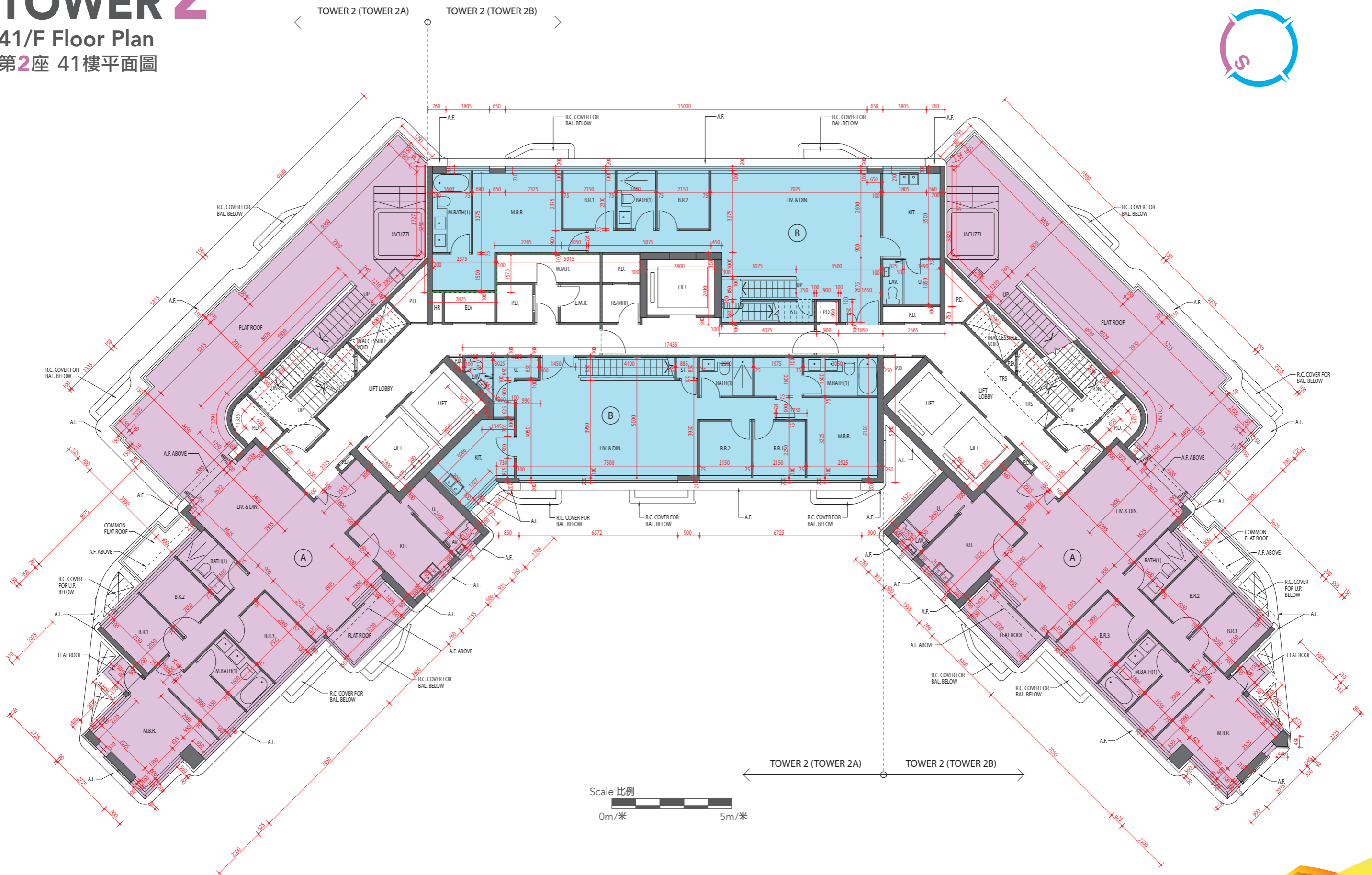
The internal areas of the residential properties on the upper floors will generally be slightly larger than those on the lower floors because of the reducing thickness of the structural walls on the upper floors. (Note: This statement required in Section 10(2)(e) in Part 1 of Schedule 1 of the Residential Properties (First-hand Sales) Ordinance (Cap.621) is not applicable to the Development)

因住宅物業的較高樓層的結構牆的厚度遞減，較高樓層的内部面積，一般比較低樓層的内部面積稍大。(註：此乃根據《一手住宅物業銷售條例》(第621章)附表1第1部第10(2)(e)條所規定的陳述並不適用於發展項目)

Note:
4/F, 13/F, 14/F, 24/F and 34/F are omitted.

註：
不設4樓、13樓、14樓、24樓及34樓。

TOWER 2
41/F Floor Plan
第2座 41樓平面圖



11 FLOOR PLANS OF RESIDENTIAL PROPERTIES IN THE DEVELOPMENT

發展項目的住宅物業的樓面平面圖

	Tower 座數	Floor 樓層	Flat 單位	
			A	B
The thickness of the floor slabs (excluding plaster) of each residential property (mm) 每個住宅物業的樓板(不包括灰泥)的厚度(毫米)	Towers 2A & 2B 第2A及2B座	R/F 天台	N/A 不適用	N/A 不適用
The floor-to-floor height (refers to the height between the top surface of the structural slab of a floor and the top surface of the structural slab of its immediate upper floor) of each residential property (mm) 每個住宅物業的層與層之間的高度 (指該樓層之石屎地台面與上一層石屎地台面之高度距離)(毫米)			N/A 不適用	N/A 不適用

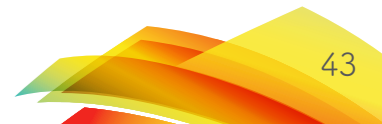
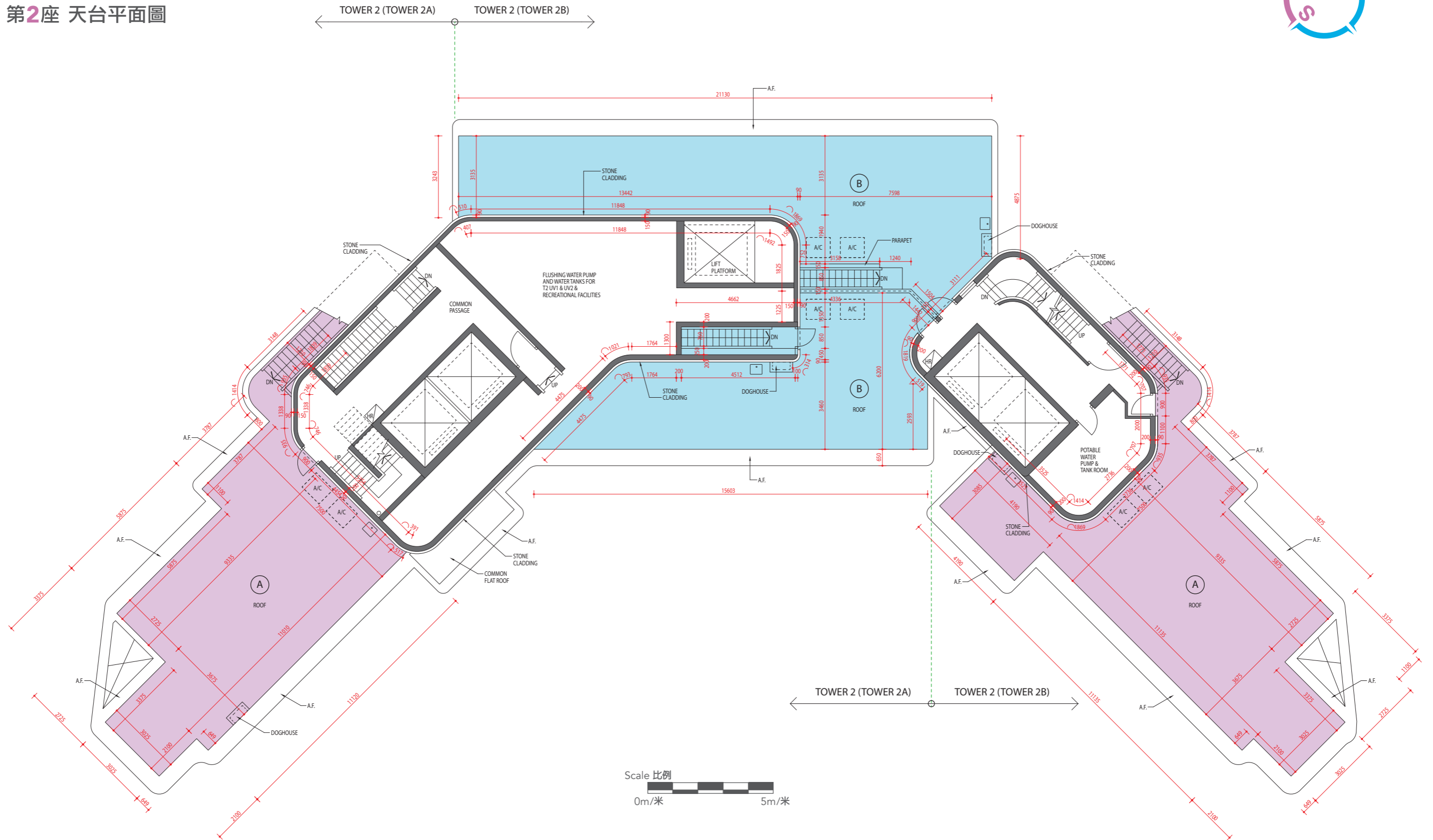
The internal areas of the residential properties on the upper floors will generally be slightly larger than those on the lower floors because of the reducing thickness of the structural walls on the upper floors. (Note: This statement required in Section 10(2)(e) in Part 1 of Schedule 1 of the Residential Properties (First-hand Sales) Ordinance (Cap.621) is not applicable to the Development)

因住宅物業的較高樓層的結構牆的厚度遞減，較高樓層的内部面積，一般比較低樓層的内部面積稍大。(註：此乃根據《一手住宅物業銷售條例》(第621章)附表1第1部第10(2)(e)條所規定的陳述並不適用於發展項目)

Note:
4/F, 13/F, 14/F, 24/F and 34/F are omitted.

註：
不設4樓、13樓、14樓、24樓及34樓。

TOWER 2
 Roof Floor Plan
 第2座 天台平面圖



11 FLOOR PLANS OF RESIDENTIAL PROPERTIES IN THE DEVELOPMENT

發展項目的住宅物業的樓面平面圖

	Tower 座數	Floor 樓層	Flat 單位							
			A	B	C	D	E	F	G	H
The thickness of the floor slabs (excluding plaster) of each residential property (mm) 每個住宅物業的樓板(不包括灰泥)的厚度(毫米)	Urban Villa 1 都會城邸1	1/F 1樓	150	150	150, 300	150	150, 300	150, 300	150	150
The floor-to-floor height (refers to the height between the top surface of the structural slab of a floor and the top surface of the structural slab of its immediate upper floor) of each residential property (mm) 每個住宅物業的層與層之間的高度 (指該樓層之石屎地台面與上一層石屎地台面之高度距離)(毫米)			3050	3050	3050	3050	3050	3050	3050	3050

The internal areas of the residential properties on the upper floors will generally be slightly larger than those on the lower floors because of the reducing thickness of the structural walls on the upper floors. (Note: This statement required in Section 10(2)(e) in Part 1 of Schedule 1 of the Residential Properties (First-hand Sales) Ordinance (Cap.621) is not applicable to the Development)

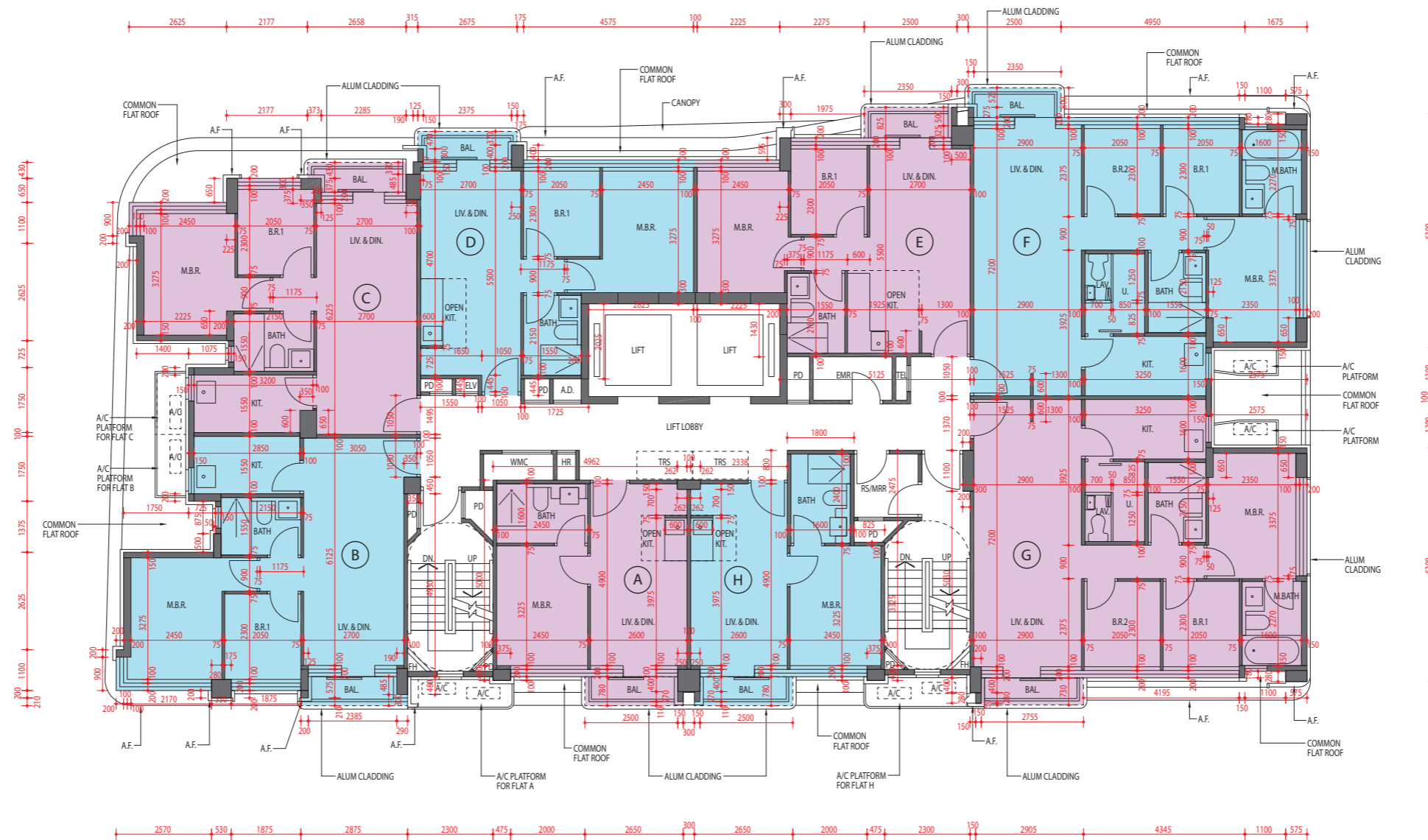
因住宅物業的較高樓層的結構牆的厚度遞減，較高樓層的内部面積，一般比較低樓層的内部面積稍大。(註：此乃根據《一手住宅物業銷售條例》(第621章)附表1第1部第10(2)(e)條所規定的陳述並不適用於發展項目)

Note:
4/F is omitted.

註：
不設4樓。

URBAN VILLA 1

1/F Floor Plan
都會城邸1 1樓平面圖



Scale 比例
0m/米 5m/米

11 FLOOR PLANS OF RESIDENTIAL PROPERTIES IN THE DEVELOPMENT

發展項目的住宅物業的樓面平面圖

	Tower 座數	Floor 樓層	Flat 單位							
			A	B	C	D	E	F	G	H
The thickness of the floor slabs (excluding plaster) of each residential property (mm) 每個住宅物業的樓板(不包括灰泥)的厚度(毫米)	Urban Villa 1 都會城邸 ¹	2/F - 5/F 2樓至5樓	150	150	150, 300	150	150, 300	150, 300	150	150
		6/F 6樓	150, 200	150, 200	150, 200, 300	150, 200	150, 200, 300	150, 200, 300	150, 200	150, 200
2/F - 5/F 2樓至5樓		3050	3050	3050	3050	3050	3050	3050	3050	
6/F 6樓		3050, 3100, 3300, 3400	3050, 3100, 3450	3050, 3100, 3450	3050, 3100, 3300, 3400	3050, 3100, 3400	3050, 3100, 3400, 3450	3050, 3100, 3400, 3450	3050, 3100, 3300, 3400	
The floor-to-floor height (refers to the height between the top surface of the structural slab of a floor and the top surface of the structural slab of its immediate upper floor) of each residential property (mm) 每個住宅物業的層與層之間的高度 (指該樓層之石屎地台面與上一層石屎地台面之高度距離)(毫米)										

The internal areas of the residential properties on the upper floors will generally be slightly larger than those on the lower floors because of the reducing thickness of the structural walls on the upper floors. (Note: This statement required in Section 10(2)(e) in Part 1 of Schedule 1 of the Residential Properties (First-hand Sales) Ordinance (Cap.621) is not applicable to the Development)

因住宅物業的較高樓層的結構牆的厚度遞減，較高樓層的内部面積，一般比較低樓層的内部面積稍大。(註：此乃根據《一手住宅物業銷售條例》(第621章)附表1第1部第10(2)(e)條所規定的陳述並不適用於發展項目)

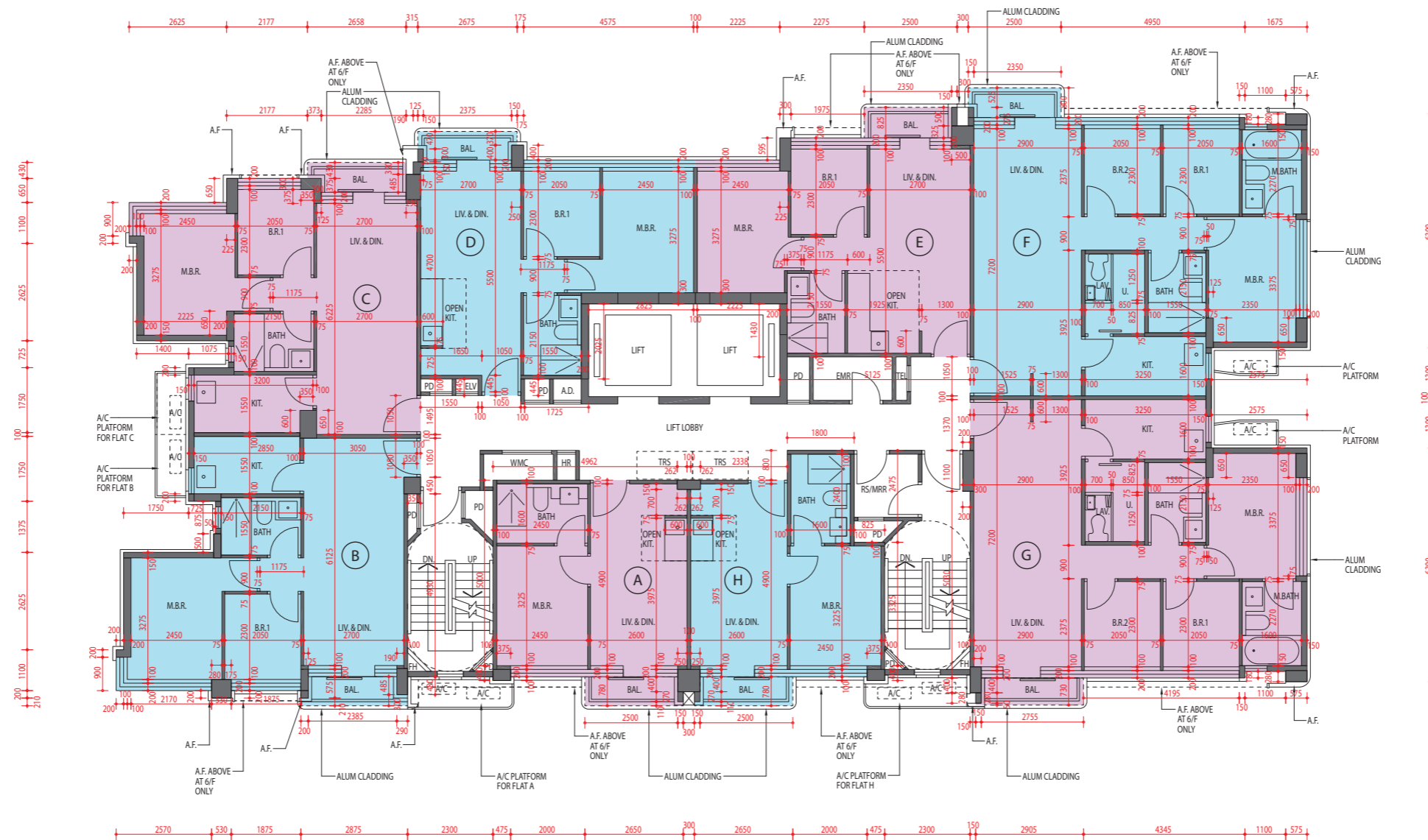
Note:
4/F is omitted.

註：
不設4樓。

URBAN VILLA 1

2/F - 6/F Floor Plan

都會城邸1 2樓至6樓平面圖



Scale 比例



11 FLOOR PLANS OF RESIDENTIAL PROPERTIES IN THE DEVELOPMENT

發展項目的住宅物業的樓面平面圖

	Tower 座數	Floor 樓層	Flat 單位							
			A	B	C	D	E	F	G	H
The thickness of the floor slabs (excluding plaster) of each residential property (mm) 每個住宅物業的樓板(不包括灰泥)的厚度(毫米)	Urban Villa 2 都會城邸2	1/F 1樓	150	150	150, 300	150	150, 300	150, 300	150	150
The floor-to-floor height (refers to the height between the top surface of the structural slab of a floor and the top surface of the structural slab of its immediate upper floor) of each residential property (mm) 每個住宅物業的層與層之間的高度 (指該樓層之石屎地台面與上一層石屎地台面之高度距離)(毫米)			3050	3050	3050	3050	3050	3050	3050	3050

The internal areas of the residential properties on the upper floors will generally be slightly larger than those on the lower floors because of the reducing thickness of the structural walls on the upper floors. (Note: This statement required in Section 10(2)(e) in Part 1 of Schedule 1 of the Residential Properties (First-hand Sales) Ordinance (Cap.621) is not applicable to the Development)

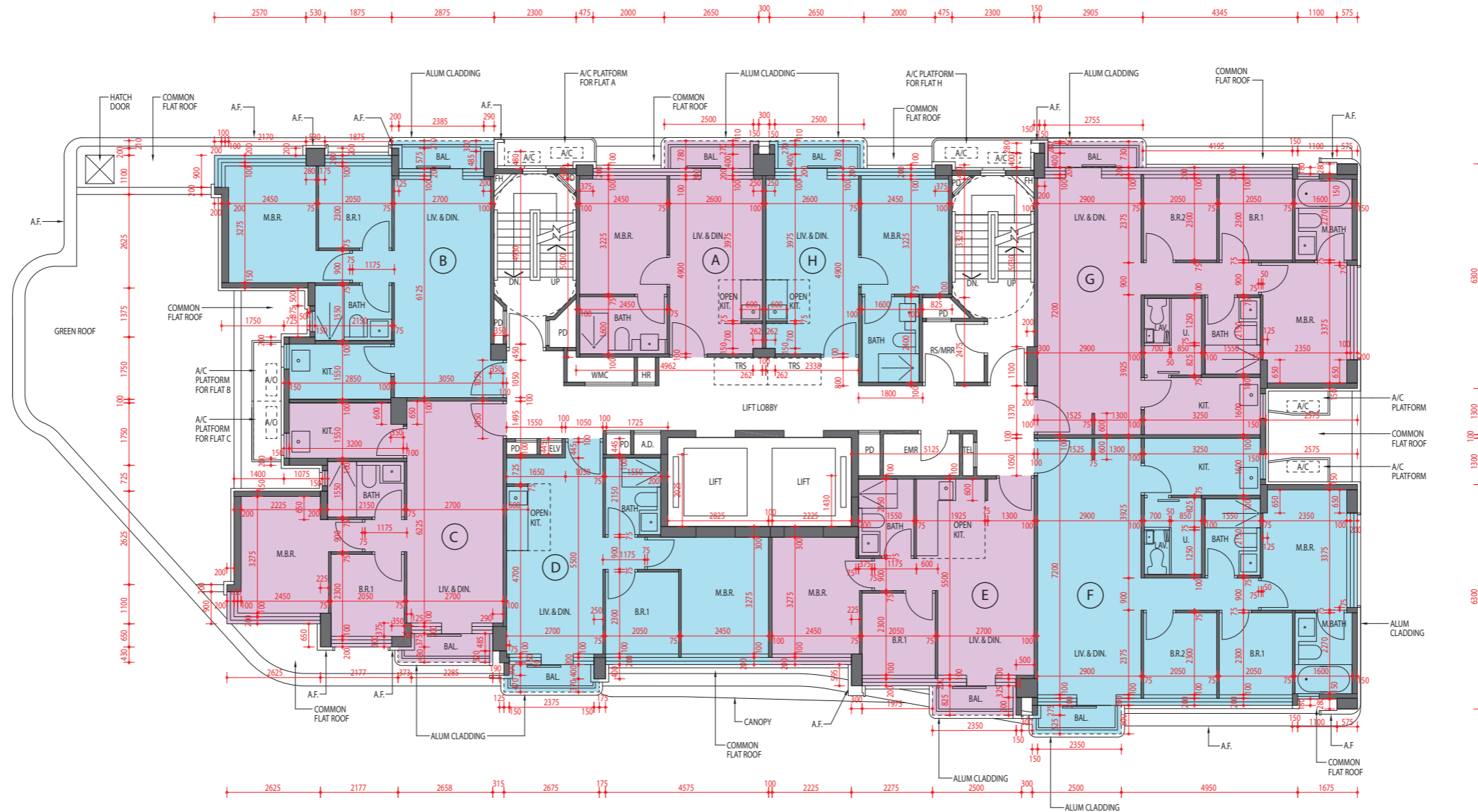
因住宅物業的較高樓層的結構牆的厚度遞減，較高樓層的内部面積，一般比較低樓層的内部面積稍大。(註：此乃根據《一手住宅物業銷售條例》(第621章)附表1第1部第10(2)(e)條所規定的陳述並不適用於發展項目)

Note:
4/F is omitted.

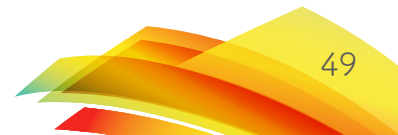
註：
不設4樓。

URBAN VILLA 2

1/F Floor Plan
都會城邸2 1樓平面圖



Scale 比例
0m/米 5m/米



11 FLOOR PLANS OF RESIDENTIAL PROPERTIES IN THE DEVELOPMENT

發展項目的住宅物業的樓面平面圖

	Tower 座數	Floor 樓層	Flat 單位							
			A	B	C	D	E	F	G	H
The thickness of the floor slabs (excluding plaster) of each residential property (mm) 每個住宅物業的樓板(不包括灰泥)的厚度(毫米)	Urban Villa 2 都會城邸2	2/F - 5/F 2樓至5樓	150	150	150, 300	150	150, 300	150, 300	150	150
		6/F 6樓	150, 200	150, 200	150, 200, 300	150, 200	150, 200, 300	150, 200, 300	150, 200	150, 200
2/F - 5/F 2樓至5樓		3050	3050	3050	3050	3050	3050	3050	3050	
6/F 6樓		3050, 3100, 3300, 3400	3050, 3100, 3450	3050, 3100, 3450	3050, 3100, 3300, 3400	3050, 3100, 3400	3050, 3100, 3400, 3450	3050, 3100, 3400, 3450	3050, 3100, 3300, 3400	
The floor-to-floor height (refers to the height between the top surface of the structural slab of a floor and the top surface of the structural slab of its immediate upper floor) of each residential property (mm) 每個住宅物業的層與層之間的高度 (指該樓層之石屎地台面與上一層石屎地台面之高度距離)(毫米)										

The internal areas of the residential properties on the upper floors will generally be slightly larger than those on the lower floors because of the reducing thickness of the structural walls on the upper floors. (Note: This statement required in Section 10(2)(e) in Part 1 of Schedule 1 of the Residential Properties (First-hand Sales) Ordinance (Cap.621) is not applicable to the Development)

因住宅物業的較高樓層的結構牆的厚度遞減，較高樓層的内部面積，一般比較低樓層的内部面積稍大。(註：此乃根據《一手住宅物業銷售條例》(第621章)附表1第1部第10(2)(e)條所規定的陳述並不適用於發展項目)

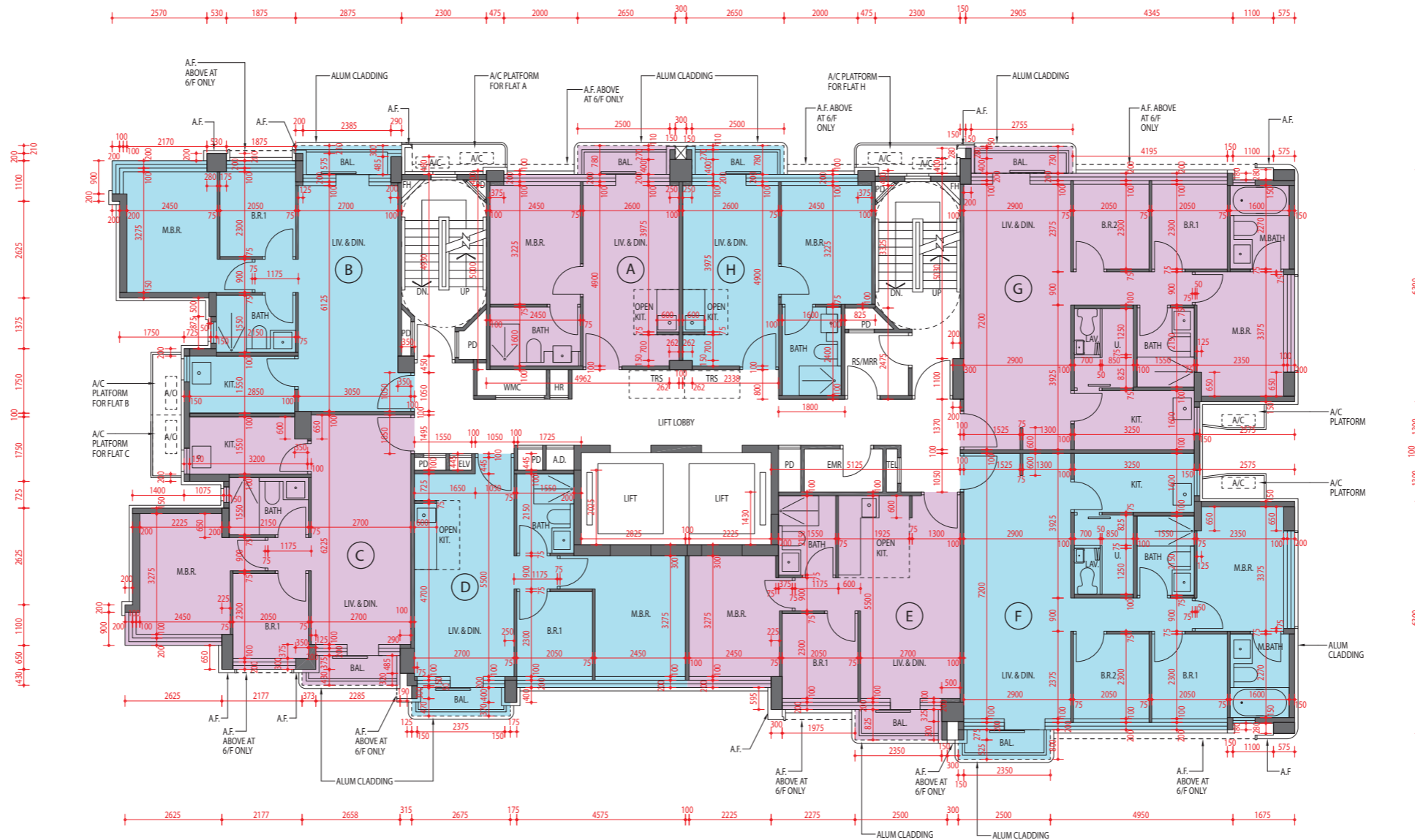
Note:
4/F is omitted.

註：
不設4樓。

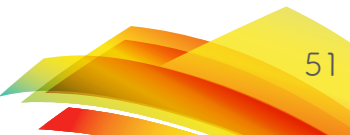
URBAN VILLA 2

2/F - 6/F Floor Plan

都會城邸2 2樓至6樓平面圖



Scale 比例
0m/米 5m/米



11 FLOOR PLANS OF RESIDENTIAL PROPERTIES IN THE DEVELOPMENT

發展項目的住宅物業的樓面平面圖

	Tower 座數	Floor 樓層	Flat 單位
The thickness of the floor slabs (excluding plaster) of each residential property (mm) 每個住宅物業的樓板 (不包括灰泥) 的厚度 (毫米)	Garden Mansion 1 花園洋房 1	B/F 地庫	150, 170, 300
		G/F 地下	150
		1/F 1樓	150
		2/F 2樓	150, 200, 300
		R/F 天台	N/A 不適用
The floor-to-floor height (refers to the height between the top surface of the structural slab of a floor and the top surface of the structural slab of its immediate upper floor) of each residential property (mm) 每個住宅物業的層與層之間的高度 (指該樓層之石屎地台面與上一層石屎地台面之高度距離) (毫米)	Garden Mansion 1 花園洋房 1	B/F 地庫	6550
		G/F 地下	4500
		1/F 1樓	3500
		2/F 2樓	3500, 4400
		R/F 天台	N/A 不適用

The internal areas of the residential properties on the upper floors will generally be slightly larger than those on the lower floors because of the reducing thickness of the structural walls on the upper floors. (Note: This statement required in Section 10(2)(e) in Part 1 of Schedule 1 of the Residential Properties (First-hand Sales) Ordinance (Cap.621) is not applicable to the Development)

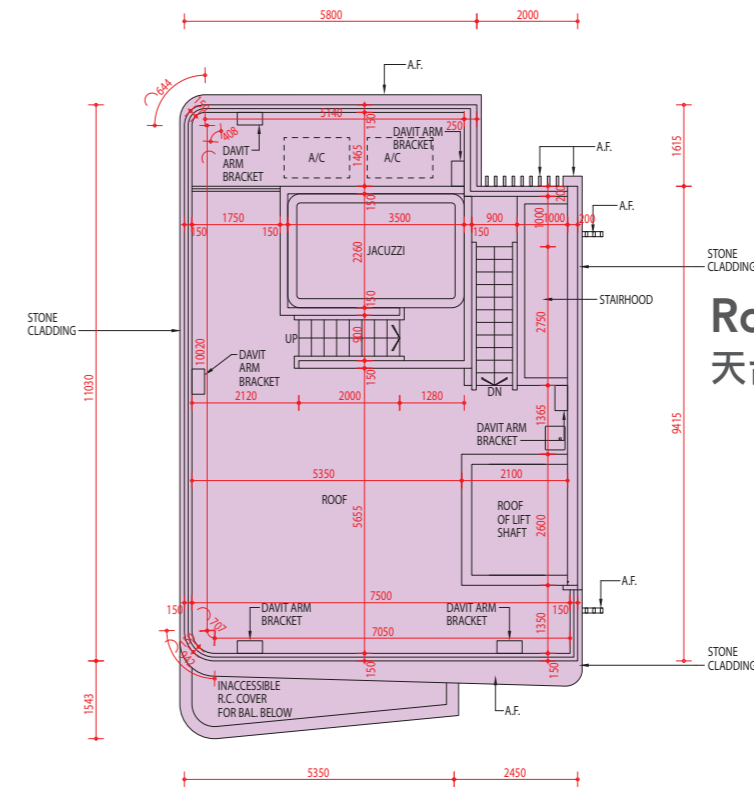
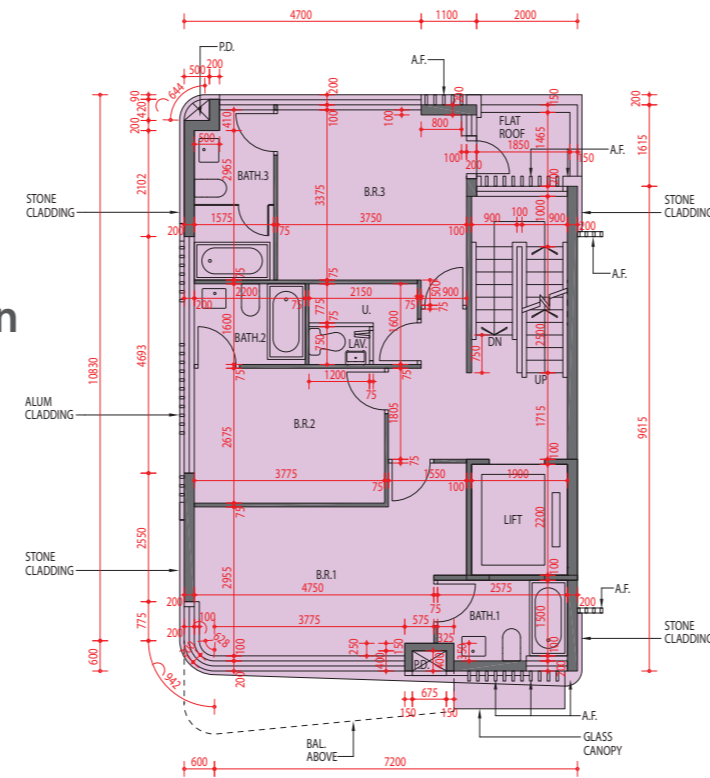
因住宅物業的較高樓層的結構牆的厚度遞減，較高樓層的内部面積，一般比較低樓層的内部面積稍大。(註：此乃根據《一手住宅物業銷售條例》(第621章)附表1第1部第10(2)(e)條所規定的陳述並不適用於發展項目)

GARDEN MANSION 1

花園洋房1

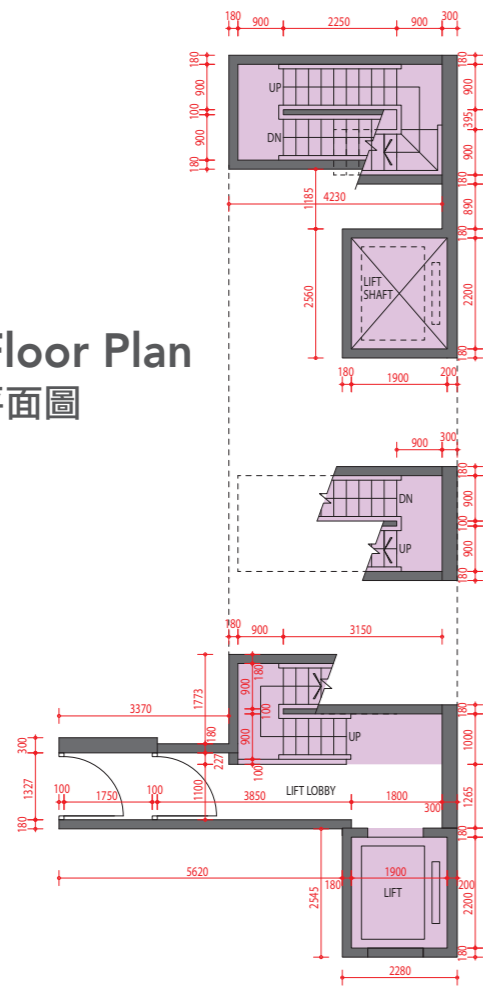


1/F Floor Plan
1樓平面圖

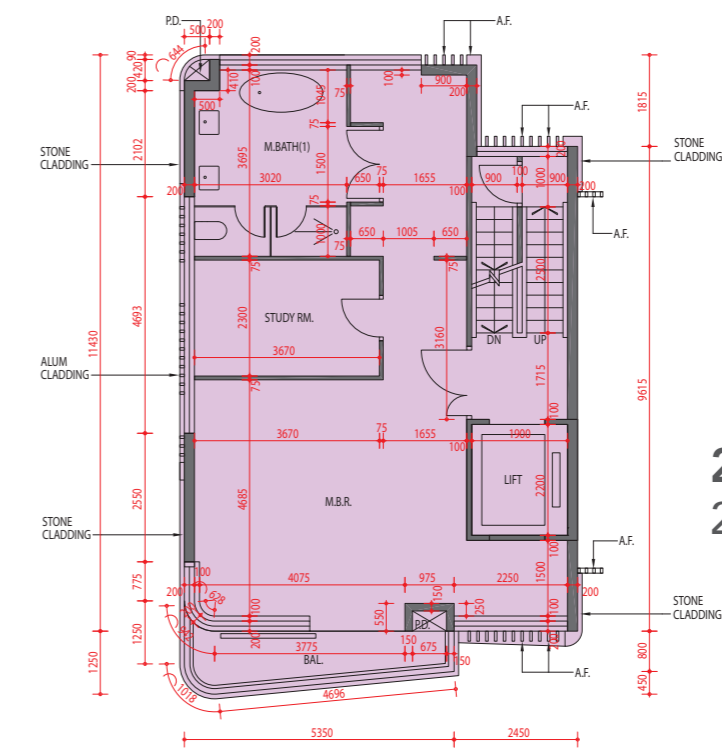
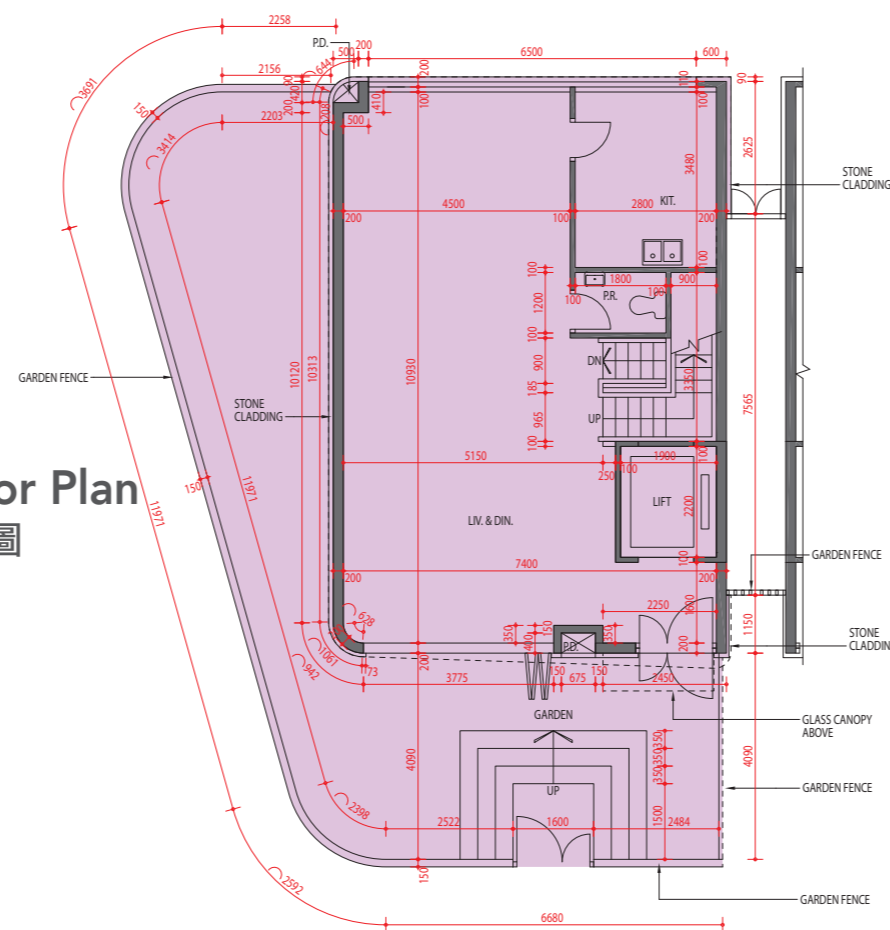


Roof Floor Plan
天台平面圖

B/F Floor Plan
地庫平面圖



G/F Floor Plan
地下平面圖



2/F Floor Plan
2樓平面圖

Scale 比例
0m/米 5m/米

11 FLOOR PLANS OF RESIDENTIAL PROPERTIES IN THE DEVELOPMENT

發展項目的住宅物業的樓面平面圖

	Tower 座數	Floor 樓層	Flat 單位
The thickness of the floor slabs (excluding plaster) of each residential property (mm) 每個住宅物業的樓板 (不包括灰泥) 的厚度 (毫米)	Garden Mansion 2 花園洋房2	B/F 地庫	150, 170, 300
		G/F 地下	150
		1/F 1樓	150
		2/F 2樓	150, 200, 300
		R/F 天台	N/A 不適用
The floor-to-floor height (refers to the height between the top surface of the structural slab of a floor and the top surface of the structural slab of its immediate upper floor) of each residential property (mm) 每個住宅物業的層與層之間的高度 (指該樓層之石屎地台面與上一層石屎地台面之高度距離) (毫米)	Garden Mansion 2 花園洋房2	B/F 地庫	6550
		G/F 地下	4500
		1/F 1樓	3500
		2/F 2樓	3500, 4400
		R/F 天台	N/A 不適用

The internal areas of the residential properties on the upper floors will generally be slightly larger than those on the lower floors because of the reducing thickness of the structural walls on the upper floors. (Note: This statement required in Section 10(2)(e) in Part 1 of Schedule 1 of the Residential Properties (First-hand Sales) Ordinance (Cap.621) is not applicable to the Development)

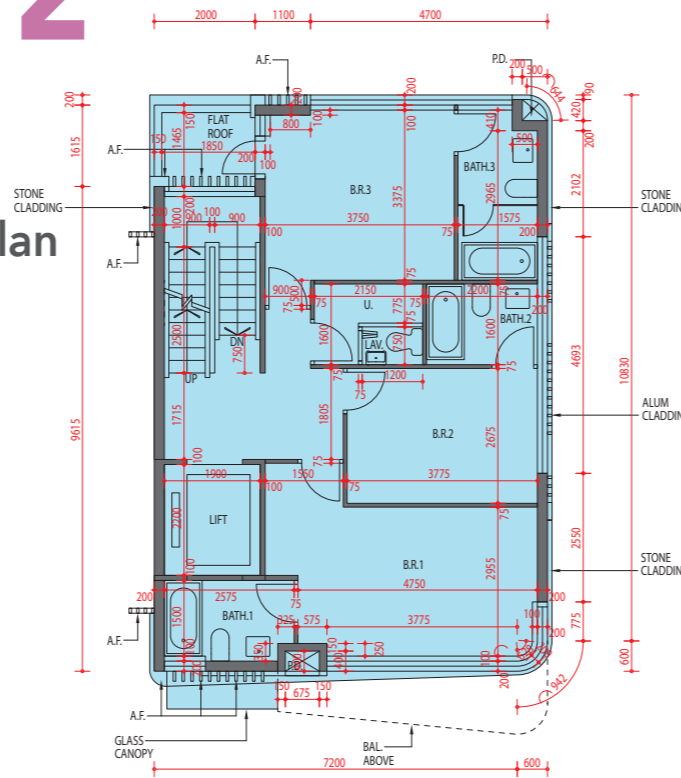
因住宅物業的較高樓層的結構牆的厚度遞減，較高樓層的内部面積，一般比較低樓層的内部面積稍大。(註：此乃根據《一手住宅物業銷售條例》(第621章)附表1第1部第10(2)(e)條所規定的陳述並不適用於發展項目)

GARDEN MANSION 2

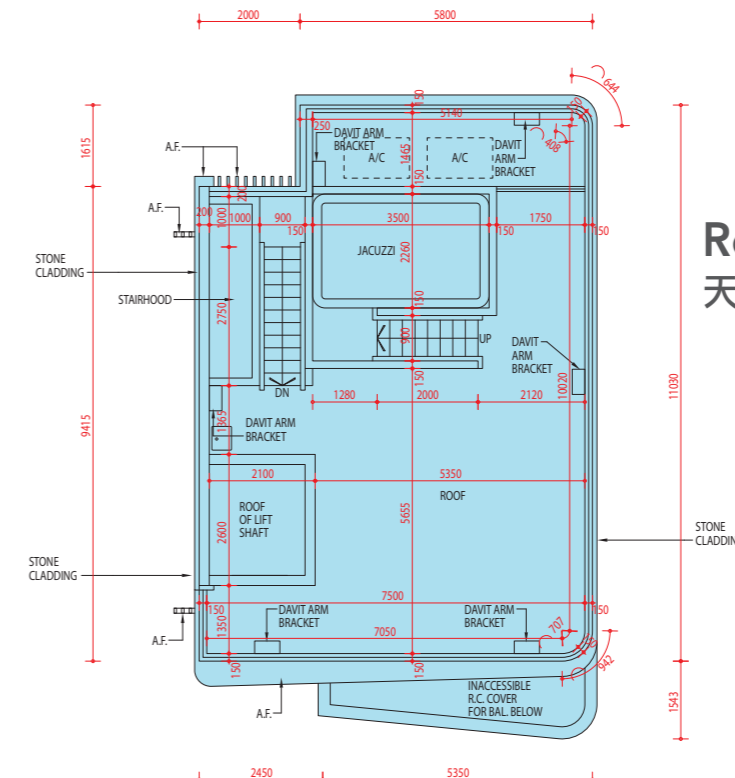
花園洋房2



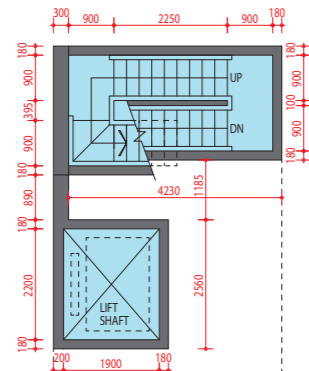
1/F Floor Plan
1樓平面圖



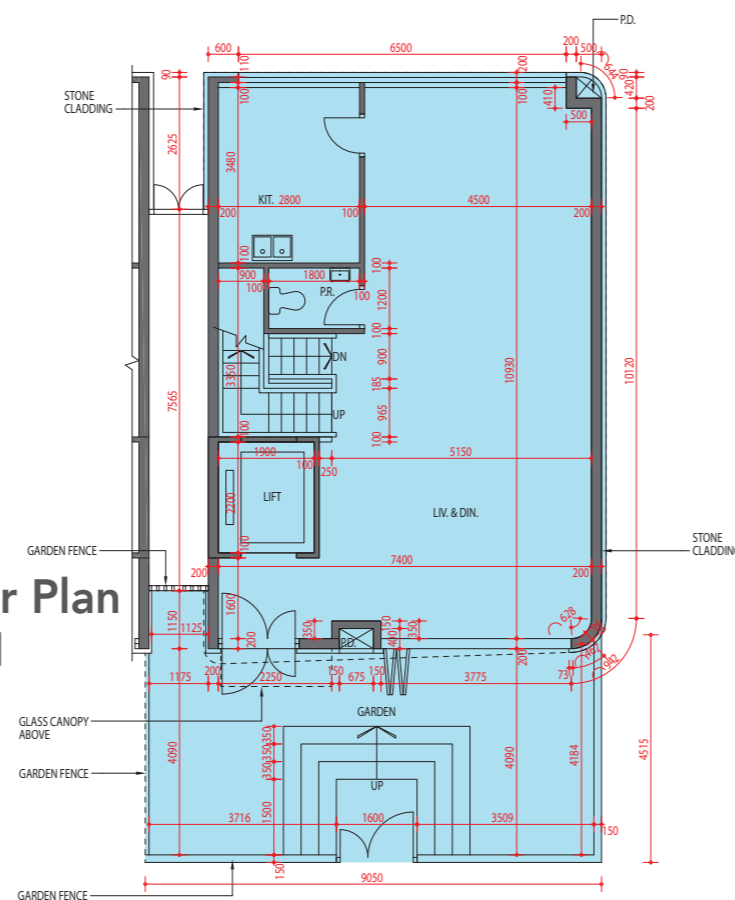
Roof Floor Plan
天台平面圖



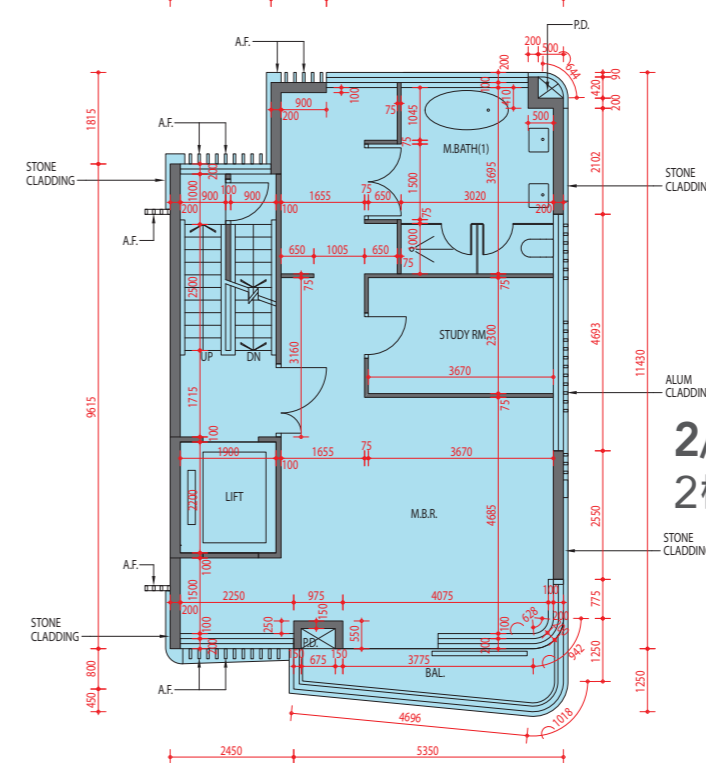
B/F Floor Plan
地庫平面圖



G/F Floor Plan
地下平面圖



2/F Floor Plan
2樓平面圖



11 FLOOR PLANS OF RESIDENTIAL PROPERTIES IN THE DEVELOPMENT

發展項目的住宅物業的樓面平面圖

	Tower 座數	Floor 樓層	Flat 單位
The thickness of the floor slabs (excluding plaster) of each residential property (mm) 每個住宅物業的樓板 (不包括灰泥) 的厚度 (毫米)	Garden Mansion 3 花園洋房3	B/F 地庫	150, 170, 300
		G/F 地下	150
		1/F 1樓	150, 200
		2/F 2樓	150, 200, 300
		R/F 天台	N/A 不適用
The floor-to-floor height (refers to the height between the top surface of the structural slab of a floor and the top surface of the structural slab of its immediate upper floor) of each residential property (mm) 每個住宅物業的層與層之間的高度 (指該樓層之石屎地台面與上一層石屎地台面之高度距離) (毫米)	Garden Mansion 3 花園洋房3	B/F 地庫	6550
		G/F 地下	4500
		1/F 1樓	3500
		2/F 2樓	3500, 4400
		R/F 天台	N/A 不適用

The internal areas of the residential properties on the upper floors will generally be slightly larger than those on the lower floors because of the reducing thickness of the structural walls on the upper floors. (Note: This statement required in Section 10(2)(e) in Part 1 of Schedule 1 of the Residential Properties (First-hand Sales) Ordinance (Cap.621) is not applicable to the Development)

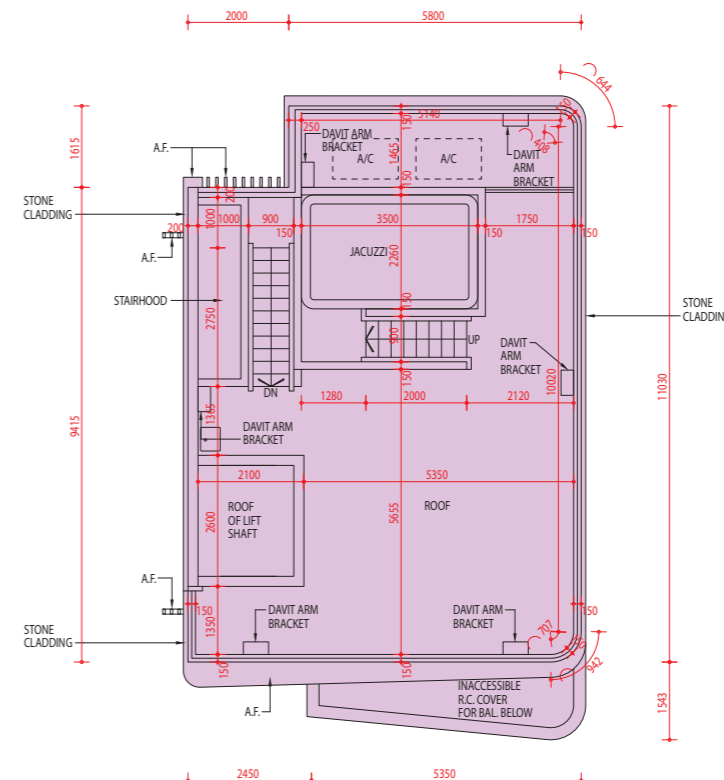
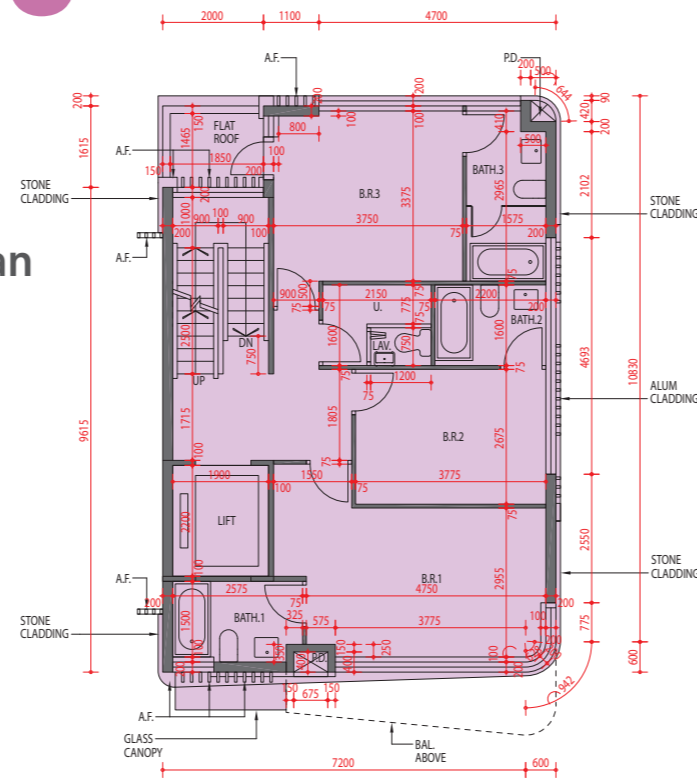
因住宅物業的較高樓層的結構牆的厚度遞減，較高樓層的内部面積，一般比較低樓層的内部面積稍大。(註：此乃根據《一手住宅物業銷售條例》(第621章)附表1第1部第10(2)(e)條所規定的陳述並不適用於發展項目)

GARDEN MANSION 3

花園洋房3

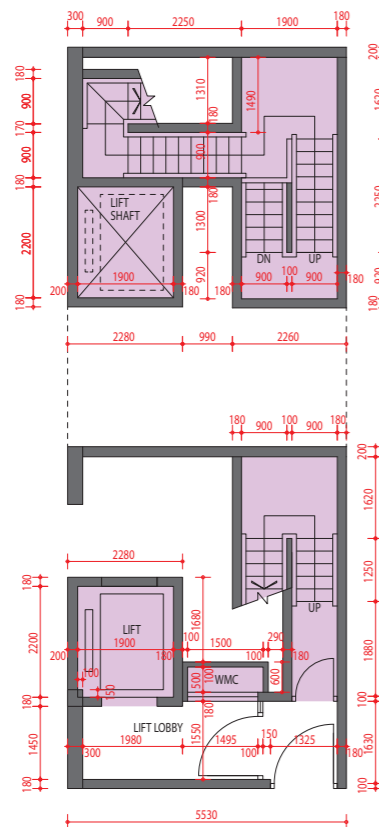


1/F Floor Plan
1樓平面圖

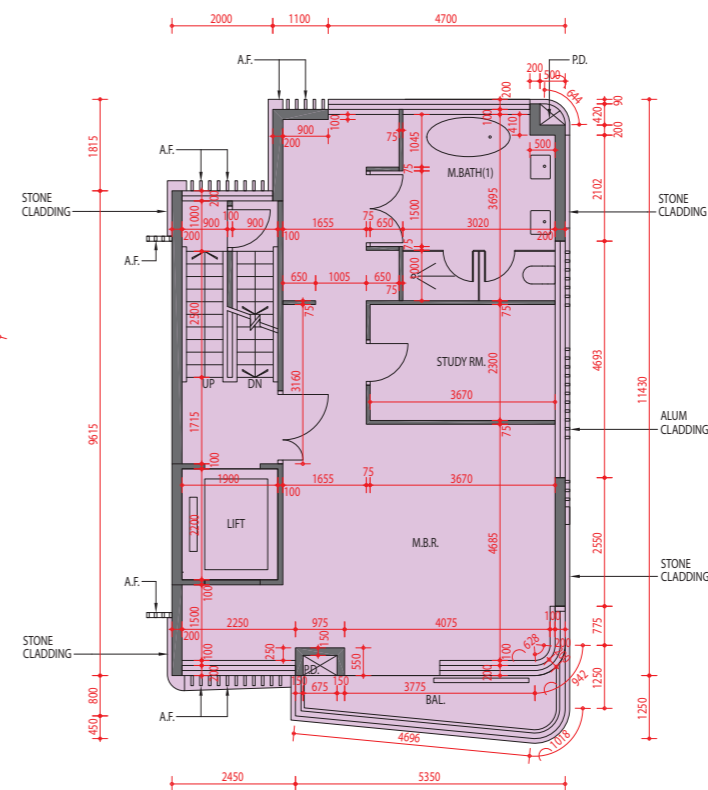
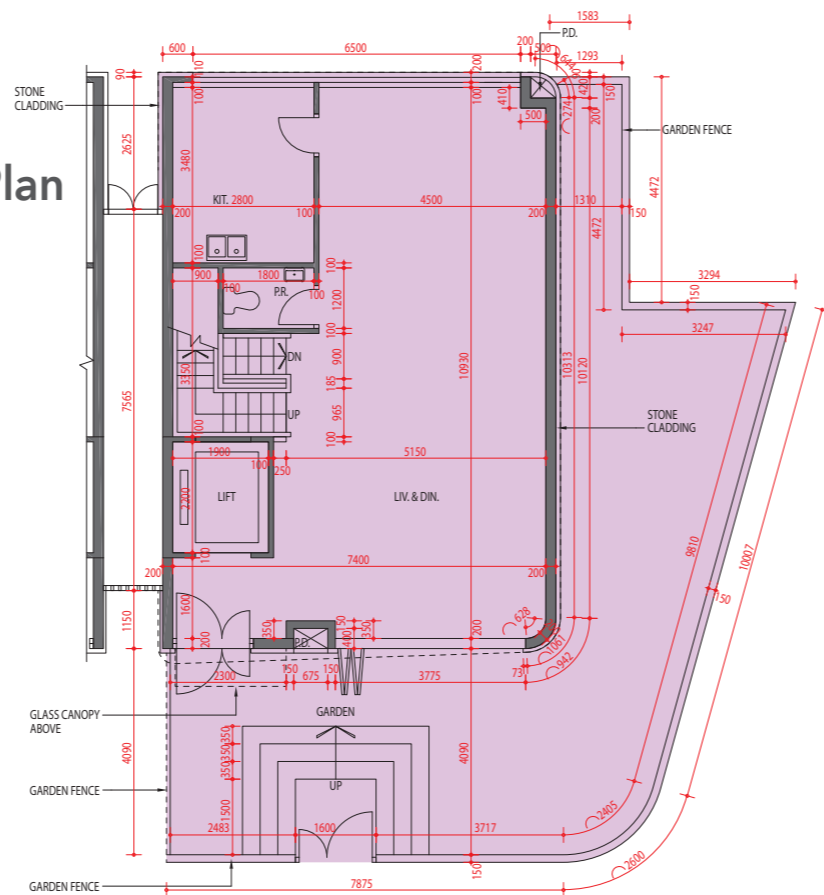


Roof Floor Plan
天台平面圖

B/F Floor Plan
地庫平面圖



G/F Floor Plan
地下平面圖



2/F Floor Plan
2樓平面圖

Scale 比例
0m/米 5m/米

11 FLOOR PLANS OF RESIDENTIAL PROPERTIES IN THE DEVELOPMENT

發展項目的住宅物業的樓面平面圖

	Tower 座數	Floor 樓層	Flat 單位
The thickness of the floor slabs (excluding plaster) of each residential property (mm) 每個住宅物業的樓板 (不包括灰泥) 的厚度 (毫米)	Garden Mansion 5 花園洋房5	B/F 地庫	150, 170, 300
		G/F 地下	150
		1/F 1樓	150, 200
		2/F 2樓	150, 200, 300
		R/F 天台	N/A 不適用
The floor-to-floor height (refers to the height between the top surface of the structural slab of a floor and the top surface of the structural slab of its immediate upper floor) of each residential property (mm) 每個住宅物業的層與層之間的高度 (指該樓層之石屎地台面與上一層石屎地台面之高度距離) (毫米)	Garden Mansion 5 花園洋房5	B/F 地庫	6550
		G/F 地下	4500
		1/F 1樓	3500
		2/F 2樓	3500, 4400
		R/F 天台	N/A 不適用

The internal areas of the residential properties on the upper floors will generally be slightly larger than those on the lower floors because of the reducing thickness of the structural walls on the upper floors. (Note: This statement required in Section 10(2)(e) in Part 1 of Schedule 1 of the Residential Properties (First-hand Sales) Ordinance (Cap.621) is not applicable to the Development)

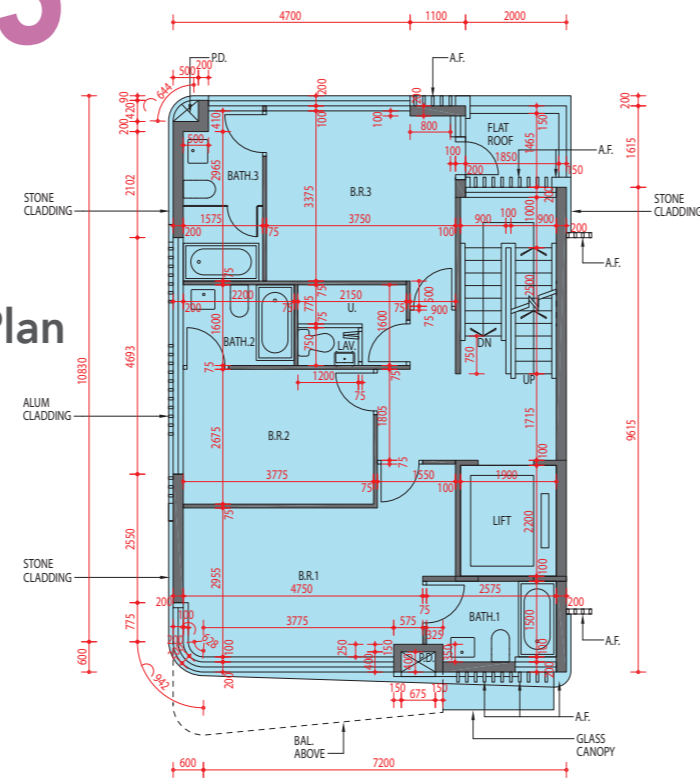
因住宅物業的較高樓層的結構牆的厚度遞減，較高樓層的内部面積，一般比較低樓層的内部面積稍大。(註：此乃根據《一手住宅物業銷售條例》(第621章)附表1第1部第10(2)(e)條所規定的陳述並不適用於發展項目)

GARDEN MANSION 5

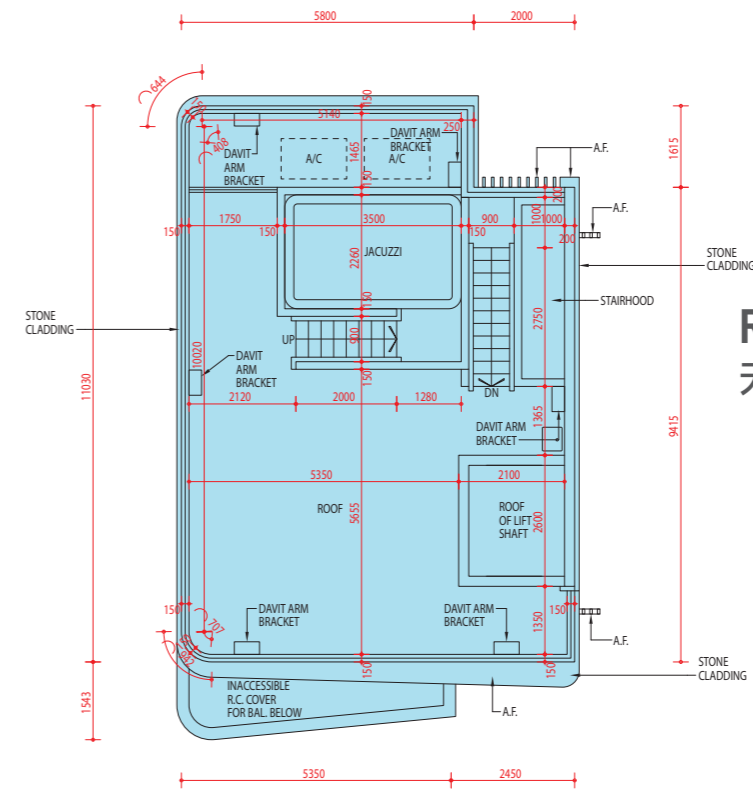
花園洋房5



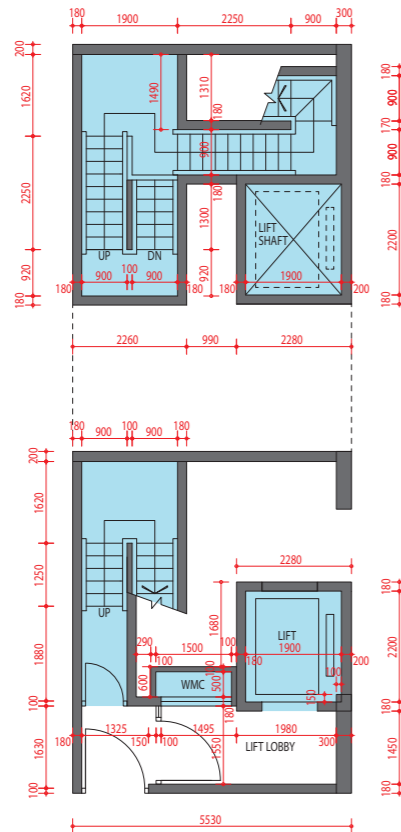
1/F Floor Plan
1樓平面圖



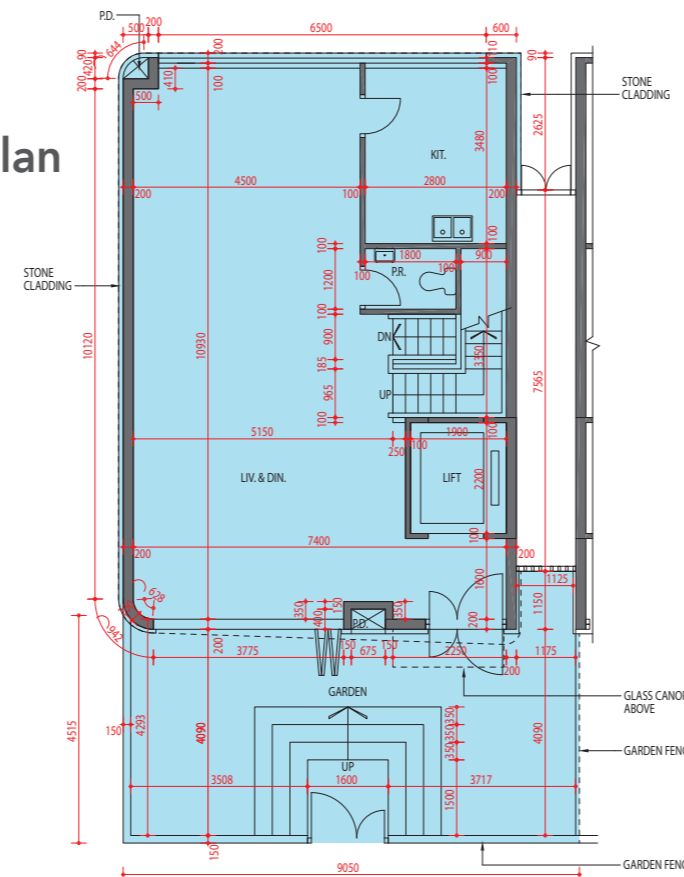
Roof Floor Plan
天台平面圖



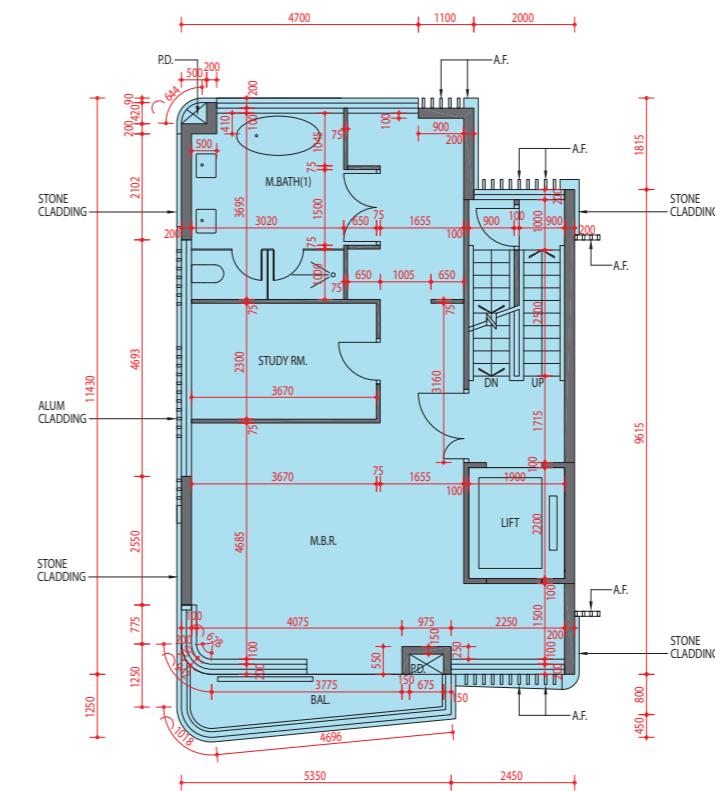
B/F Floor Plan
地庫平面圖



G/F Floor Plan
地下平面圖



2/F Floor Plan
2樓平面圖



Scale 比例
0m/米 5m/米

