

11 FLOOR PLANS OF RESIDENTIAL PROPERTIES IN THE DEVELOPMENT

發展項目的住宅物業的樓面平面圖

The remarks and legends on this page apply to all pages of "Floor plans of residential properties in the Development".
在本頁上之備註和圖例適用於全部的「發展項目的住宅物業的樓面平面圖」頁數。

Legends of the Floor Plans 樓面平面圖圖例

A.C. PLATFORM	= Air Conditioning Platform	= 空調機平台
A.D.	= Air Duct	= 風喉管道
ARCH. FEATURE	= Architectural Feature	= 建築裝飾
ARCH. FEATURE ABOVE	= Architectural Feature Above	= 建築裝飾置上
ARCH. FEATURE ABOVE AT 6/F, 8/F, 10/F, 12/F, 16/F, 18/F, 20/F, 22/F, 25/F H/L	= Architectural Feature Above at 6/F, 8/F, 10/F, 12/F, 16/F, 18/F, 20/F, 22/F, 25/F High Level	= 建築裝飾置上於6樓、8樓、10樓、 12樓、16樓、18樓、22樓、25樓高位
ARCH. FEATURE ABOVE AT R/F	= Architectural Feature Above at Roof	= 建築裝飾置上於天台
BAL.	= Balcony	= 露台
BATH.	= Bathroom	= 浴室
BR. 2	= Bedroom 2	= 睡房 2
COMMON AREA	= Common Area	= 公用地方
DIN.	= Dining Room	= 飯廳
DN.	= Down	= 落
E.M.C.	= Electrical Meter Cabinet	= 電錶櫃
FLAT ROOF	= Flat Roof	= 平台
FLAT ROOF OF 27/F FLAT A	= Flat Roof of 27/F Flat A	= 27樓單位A的平台
FLAT ROOF OF 27/F FLAT B	= Flat Roof of 27/F Flat B	= 27樓單位B的平台
FLAT ROOF OF 27/F FLAT C	= Flat Roof of 27/F Flat C	= 27樓單位C的平台
FLAT ROOF OF 27/F FLAT D	= Flat Roof of 27/F Flat D	= 27樓單位D的平台
FLAT ROOF OF 27/F FLAT E	= Flat Roof of 27/F Flat E	= 27樓單位E的平台
H.R.	= Hose Reel	= 消防喉轆
LIFT	= Lift	= 升降機
LIFT LOBBY	= Lift Lobby	= 升降機大堂
LIV.	= Living Room	= 客廳
MBR.	= Master Bedroom	= 主人睡房
OPEN KIT.	= Open Kitchen	= 開放式廚房
PLANTER	= Planter	= 花槽
P.D.	= Pipe Duct	= 管道槽
POTABLE WATER PUMP ROOM	= Potable Water Pump Room	= 飲用水泵房
R.C. CHAMBER FOR PIPE WORK	= Reinforced Concrete Chamber For Pipe Work	= 鋼筋混凝土管道罩室
R.C. COVER FOR BAL. BELOW	= Reinforced Concrete Cover For Balcony Below	= 下層露台的鋼筋混凝土頂板
R.C. COVER FOR U.P. BELOW	= Reinforced Concrete Cover For Utility Platform Below	= 下層工作平台的鋼筋混凝土頂板
R.S. & M.R. ROOM	= Refuse Storage & Material Recovery Room	= 垃圾儲存及物料回收房
UP	= Up	= 上
U.P.	= Utility Platform	= 工作平台
U.P. ABOVE	= Utility Platform Above	= 工作平台置上
W.M.C.	= Water Meter Cabinet	= 水錶櫃

Notes:

- There are architectural features, metal grilles and/or exposed pipes on the external walls of some of the floors. For details, please refer to the latest approved building plans.
- Common pipes exposed and/or enclosed in cladding are located at/adjacent to the balcony and/or flat roof and/or air-conditioner platform and/or external wall of some residential units. For details, please refer to the latest approved building plans and/or approved drainage plans.
- There are sunken slabs (for mechanical & electrical services of units above) and/or ceiling bulkheads for the air-conditioning fittings and/or mechanical & electrical services at some residential units.
- There are exposed pipes installed in some bathrooms.
- There are exposed pipes located at the upper part of some flat roofs, utility platforms and balconies.
- Balconies and utility platforms are non-enclosed areas.
- Symbols of fittings and fitments shown in the floor plans such as bath tub, sink, water closet, shower, sink counter, etc. are prepared based on the latest approved building plans and are for indication of approximate location only.
- The dimensions of the floor plans are all structural dimensions in millimeter.

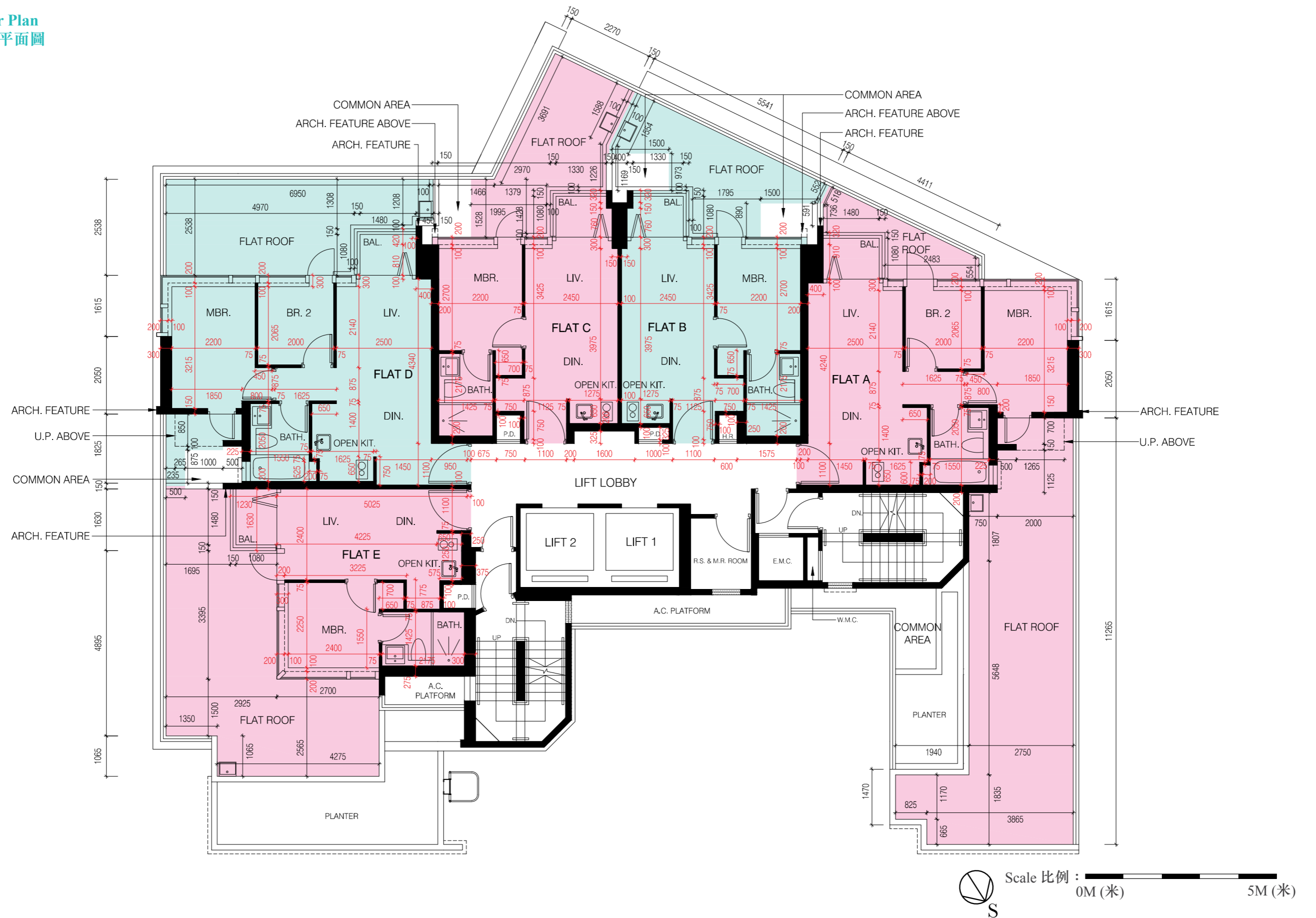
備註:

- 部分樓層外牆範圍設有建築裝飾、金屬格柵及/或外露喉管，詳細資料請參考最新批准的建築圖則。
- 部分住宅單位的露台及/或平台及/或空調機平台及/或外牆及/附近設有外露及/或外牆裝飾板內藏之公用喉管，詳細資料請參考最新批准的建築圖則及/或排水設施圖。
- 部分住宅單位天花板有跌級樓板(用以安裝樓上單位之機電設備)及/或假天花內裝置空調裝備及/或其他機電設備。
- 部分浴室內裝有外露喉管。
- 部分平台、工作平台及部分露台上方裝有外露喉管。
- 露台及工作平台為非封閉的地方。
- 樓面平面圖上所顯示的裝置符號，如浴缸、洗滌盆、座廁、花灑、洗滌盆櫃等乃按最新的經批准的建築圖則繪製，只作示意大概位置之用途。
- 平面圖所列之數字以毫米標示之建築結構尺寸。

11 FLOOR PLANS OF RESIDENTIAL PROPERTIES IN THE DEVELOPMENT

發展項目的住宅物業的樓面平面圖

5/F Floor Plan
5樓樓面平面圖



11 FLOOR PLANS OF RESIDENTIAL PROPERTIES IN THE DEVELOPMENT

發展項目的住宅物業的樓面平面圖

5/F Floor Plan 5樓樓面平面圖

Each residential property 每個住宅物業	Flat 單位					
	Floor 樓層	A	B	C	D	E
The thickness of the floor slabs (excluding plaster) of each residential property (mm) 每個住宅物業的樓板的厚度 (不包括灰泥)(毫米)	5/F 5樓	175	175	175	175	150
Floor-to-floor height of each residential property (mm) 每個住宅物業的層與層之間的高度 (毫米)		3470	3470	3470	3470	3470

The internal areas of the residential properties on the upper floors will generally be slightly larger than those on the lower floors because of the reducing thickness of the structural walls on the upper floors.

因住宅物業的較高樓層的結構牆的厚度遞減，較高樓層的內部面積，一般比較低樓層的內部面積稍大。

Notes:

- The dimensions in the floor plans are all structural dimensions in millimetre.
- Please refer to page 19 of this sales brochure for legend of the terms and abbreviations in studying the floor plans of residential properties in the Development.

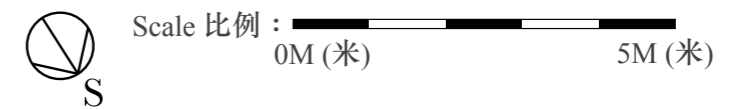
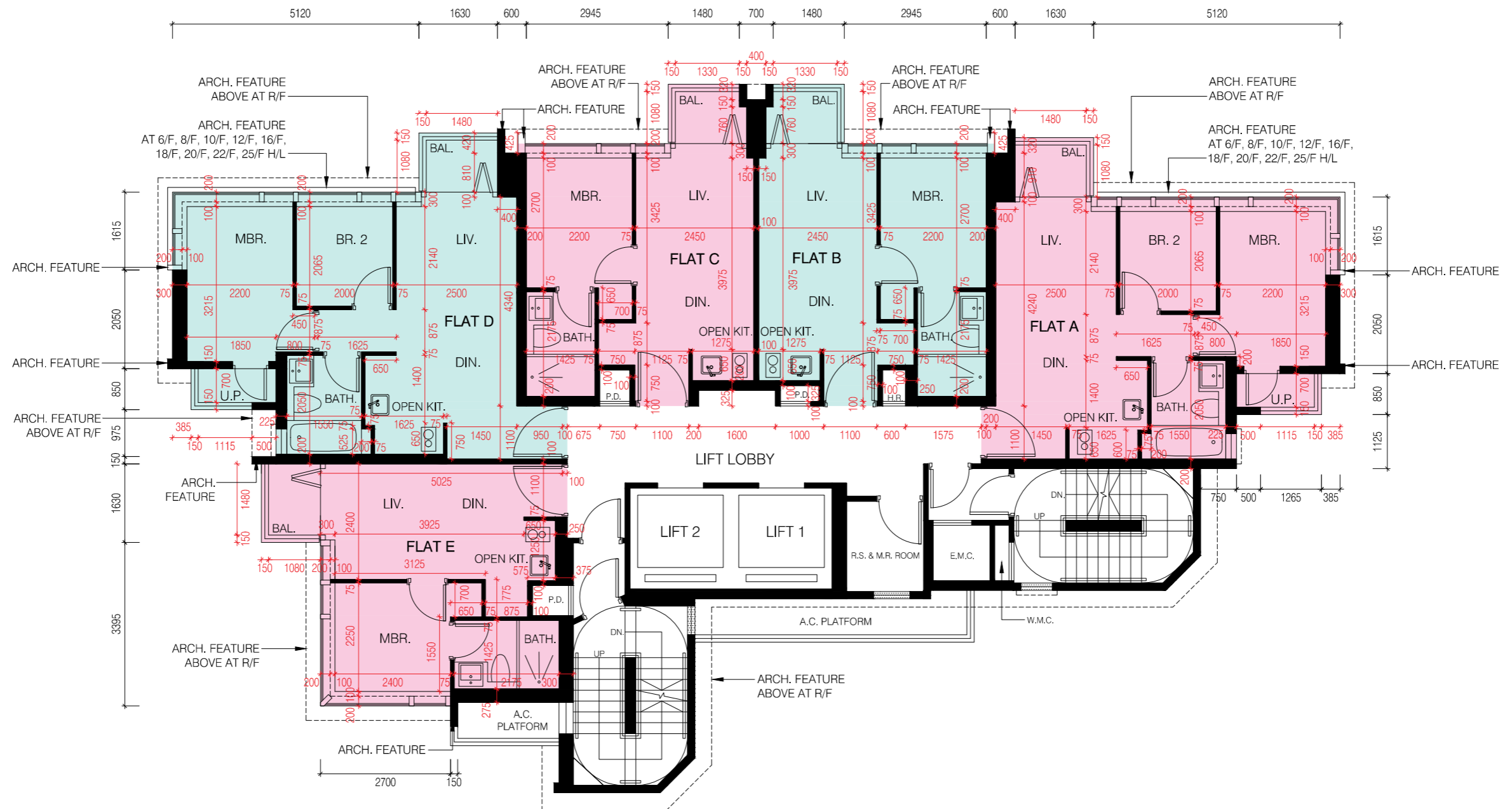
備註：

- 樓面平面圖之尺寸所列數字為以毫米標示之建築結構尺寸。
- 請參閱本售樓說明書第19頁之圖例以協助閱讀此部分的發展項目的住宅物業的樓面平面圖及其顯示之名稱和簡稱。

11 FLOOR PLANS OF RESIDENTIAL PROPERTIES IN THE DEVELOPMENT

發展項目的住宅物業的樓面平面圖

6/F-12/F, 15/F-23/F, 25/F-27/F Floor Plan
6樓至12樓、15樓至23樓、25樓至27樓樓面平面圖



11 FLOOR PLANS OF RESIDENTIAL PROPERTIES IN THE DEVELOPMENT

發展項目的住宅物業的樓面平面圖

6/F-12/F, 15/F-23/F, 25/F-27/F Floor Plan 6樓至12樓、15樓至23樓、25樓至27樓樓面平面圖

Each residential property 每個住宅物業	Flat 單位	A	B	C	D	E
	Floor 樓層					
The thickness of the floor slabs (excluding plaster) of each residential property (mm) 每個住宅物業的樓板的厚度 (不包括灰泥)(毫米)	6/F-12/F, 15/F-23/F, 25/F-26/F 6樓至12樓、15樓至23樓、 25樓至26樓	175	175	175	175	150
	27/F 27樓	175	175	175	175	175
Floor-to-floor height of each residential property (mm) 每個住宅物業的層與層之間的高度 (毫米)	6/F-12/F, 15/F-23/F, 25/F-26/F 6樓至12樓、15樓至23樓、 25樓至26樓	3470	3470	3470	3470	3470
	27/F 27樓	3470	3470	3470	3470	3470

The internal areas of the residential properties on the upper floors will generally be slightly larger than those on the lower floors because of the reducing thickness of the structural walls on the upper floors.

因住宅物業的較高樓層的結構牆的厚度遞減，較高樓層的內部面積，一般比較低樓層的內部面積稍大。

Notes:

1. The dimensions in the floor plans are all structural dimensions in millimetre.
2. Please refer to page 19 of this sales brochure for legend of the terms and abbreviations in studying the floor plans of residential properties in the Development.

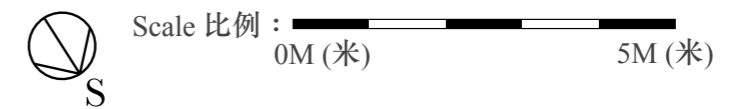
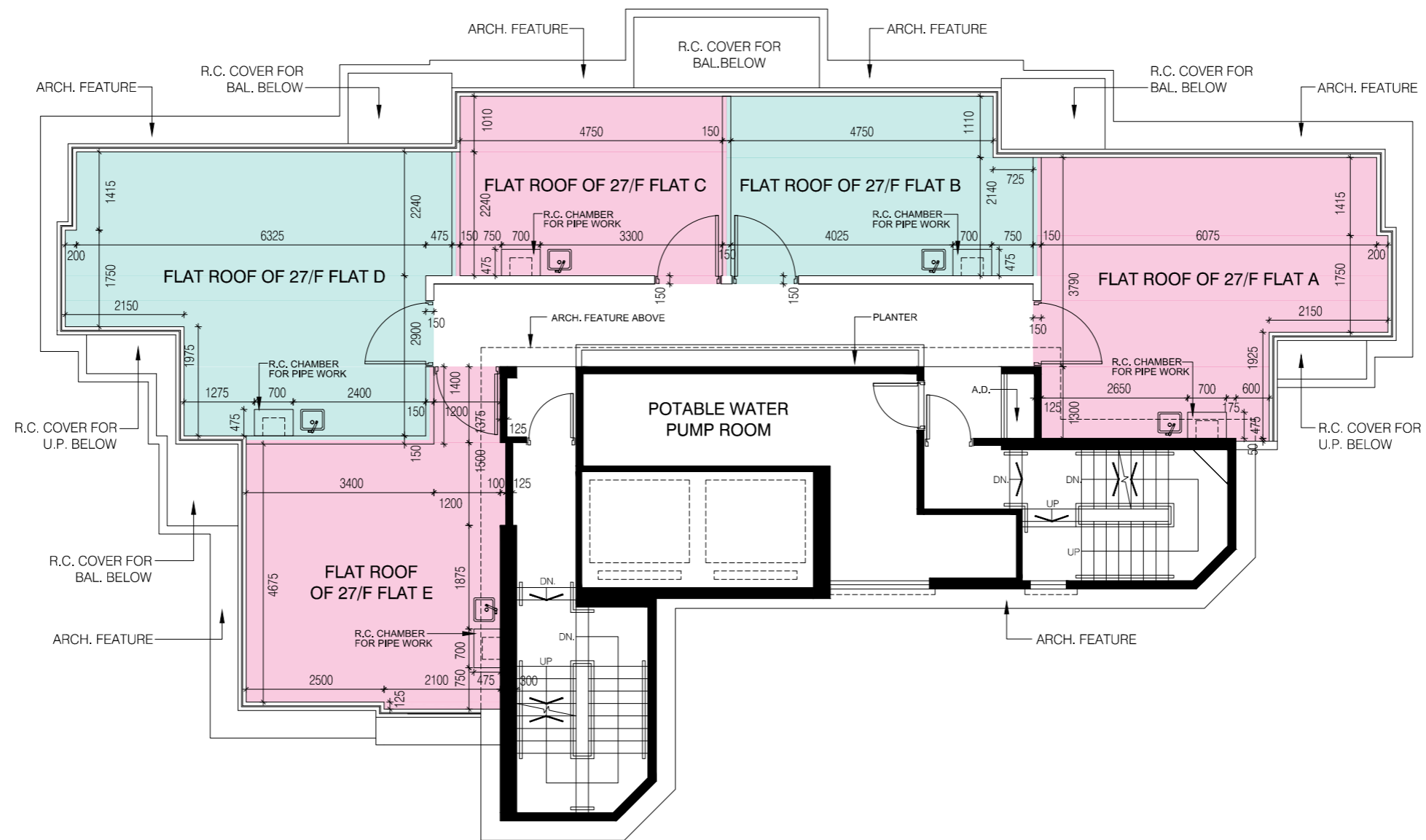
備註：

1. 樓面平面圖之尺寸所列數字為以毫米標示之建築結構尺寸。
2. 請參閱本售樓說明書第19頁之圖例以協助閱讀此部分的發展項目的住宅物業的樓面平面圖及其顯示之名稱和簡稱。

11 FLOOR PLANS OF RESIDENTIAL PROPERTIES IN THE DEVELOPMENT

發展項目的住宅物業的樓面平面圖

R/F Floor Plan 天台樓面平面圖



11 FLOOR PLANS OF RESIDENTIAL PROPERTIES IN THE DEVELOPMENT

發展項目的住宅物業的樓面平面圖

R/F Floor Plan

天台樓面平面圖

Each residential property 每個住宅物業	Flat 單位 Floor 樓層	A	B	C	D	E
The thickness of the floor slabs (excluding plaster) of each residential property (mm) 每個住宅物業的樓板的厚度 (不包括灰泥)(毫米)	R/F 天台	Not Applicable 不適用				
Floor-to-floor height of each residential property (mm) 每個住宅物業的層與層之間的高度 (毫米)						

The internal areas of the residential properties on the upper floors will generally be slightly larger than those on the lower floors because of the reducing thickness of the structural walls on the upper floors.

因住宅物業的較高樓層的結構牆的厚度遞減，較高樓層的內部面積，一般比較低樓層的內部面積稍大。

Notes:

- The dimensions in the floor plans are all structural dimensions in millimetre.
- Please refer to page 19 of this sales brochure for legend of the terms and abbreviations in studying the floor plans of residential properties in the Development.

備註：

- 樓面平面圖之尺寸所列數字為以毫米標示之建築結構尺寸。
- 請參閱本售樓說明書第19頁之圖例以協助閱讀此部分的發展項目的住宅物業的樓面平面圖及其顯示之名稱和簡稱。