

10. 期數的住宅物業的樓面平面圖 FLOOR PLANS OF RESIDENTIAL PROPERTIES IN THE PHASE

第17座地下平面圖(複式低層) BLOCK 17 — GROUND FLOOR PLAN (LOWER DUPLEX)



第17座地下及1樓A單位及B單位在發展項目落成後進行小型工程或獲《建築物條例》豁免的工程而有所改動。該等改動的大概位置已於本樓面平面圖中作標示。

Flat A and Flat B, G/F & 1/F of Block 17 have been altered by way of minor works or exempted works under the Buildings Ordinance after completion of the Development. The approximate locations of alteration are indicated on this floor plan.

第17座地下及1樓A單位的改動工程包括：

- (A) 原睡房1的間隔牆被移除並以不同尺寸的玻璃間隔牆及趟門取代。
- (B) 原廁所1被移除並以不同尺寸的間隔改建成儲物間。
- (C) 部分樓梯加闊。原樓梯的扶手被移除並以不同物料及設計的扶手取代。
- (D) 原樓梯的扶手被移除。
- (E) 新增間隔牆。

Alteration works for Flat A, G/F & 1/F of Block 17 include:

- (A) Original partition walls of the bedroom 1 were demolished and replaced by glass partition wall and sliding door with different dimensions.
- (B) Original washing chamber 1 was demolished and altered as a store by adding partition walls with different dimensions.
- (C) Some of the stairs were widened. Original railing of the staircase was demolished and replaced by railing of different material and design.
- (D) Original railing of the staircase was demolished.
- (E) Partition walls were added.

第17座地下及1樓B單位的改動工程包括：

- (A) 原睡房1的間隔牆被移除並以不同尺寸的玻璃間隔牆及趟門取代。
- (B) 原廁所、浴室1及兩個儲物間的間隔牆被移除並以不同尺寸的間隔牆整合成儲物間及廁所。
- (C) 原廚房的玻璃間隔牆被移除並以不同尺寸的玻璃間隔牆取代。

Alteration works for Flat B, G/F & 1/F of Block 17 include:

- (A) Original partition wall of the bedroom 1 was demolished and replaced by glass partition wall and sliding door with different dimensions.
- (B) Original partition walls of washing chamber, bathroom 1 and two stores were demolished and integrated into a store and a washing chamber by addition of partition walls in different dimensions.
- (C) Original glass partition walls of the kitchen were demolished and replaced by glass partition walls with different dimensions.

因住宅物業的較高樓層的結構牆的厚度遞減，較高樓層的內部面積，一般比較低樓層的內部面積稍大。請參閱本售樓說明書第45頁為住宅物業樓面平面圖而設之備註及名詞及簡稱的圖例。

The internal areas of the residential properties on the upper floors will generally be slightly larger than those on the lower floors because of the reducing thickness of the structural walls on the upper floors.

Please refer to page 45 of this sales brochure for the remarks and legends of the terms and abbreviations for the floor plans of residential properties.

備註 Note:

1. 平面圖所列數字為以毫米標示之建築結構尺寸。
 2. 以平方呎顯示之面積均依據1平方米=10.764平方呎換算，並四捨五入至整數。
1. The dimensions of floor plans are all structural dimensions in millimeter.
2. Areas in square feet are converted at a rate of 1 square metre to 10.764 square feet and rounded to the nearest integer.

每個住宅物業 Each Residential Property	單位 Unit 樓層 Floor	A	B
層與層之間的高度 Floor to Floor Height (毫米 mm)	G/F	3500	3500
樓板(不包括灰泥)的厚度 Thickness of Floor Slab (excluding plaster) (毫米 mm)	G/F	150, 175, 200, 250, 300	150, 175, 250, 300

註釋 Explanatory Note:

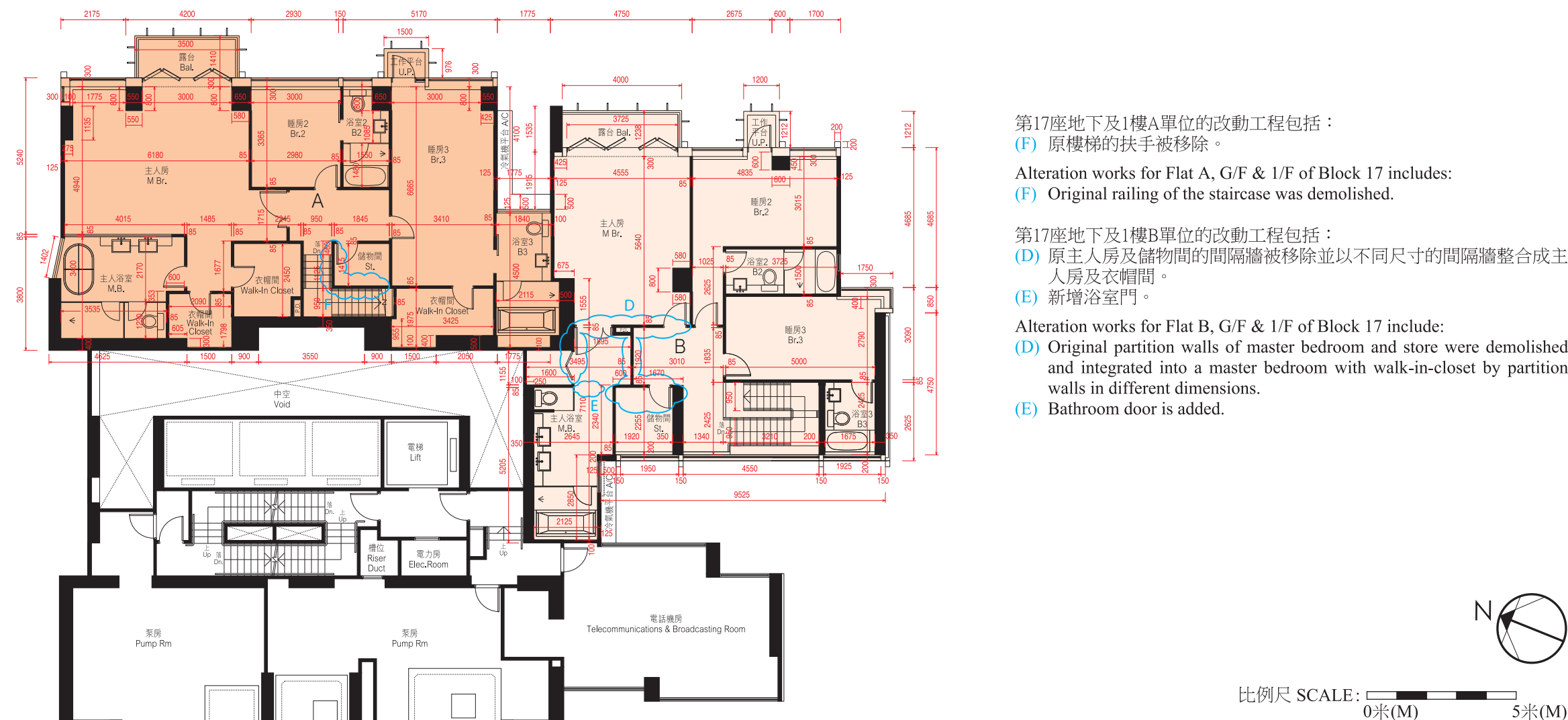
貼鄰住客停車位的面積(不計算入停車位面積或實用面積): 地下A單位為6.763平方米(73平方呎), 地下B單位為8.021平方米(86平方呎)。

由工作平台或露台遮蓋之花園面積(已計算入花園面積): 地下A單位為6.399平方米(69平方呎), 地下B單位為6.406平方米(69平方呎)。根據屋宇署規定, 該面積最少兩邊不可圍封。

Area adjoining residential parking space (not included in the area of parking space or saleable area): Flat A on G/F is 6.763 sq.m. (73 sq.ft.), Flat B on G/F is 8.021 sq.m. (86 sq.ft.).

Area of garden covered by utility platform or balcony (included in the area of garden): Flat A on G/F is 6.399 sq.m. (69 sq.ft.), Flat B on G/F is 6.406 sq.m. (69 sq.ft.). Such areas shall be unenclosed on at least 2 sides as required by Buildings Department.

第17座1樓平面圖(複式高層) BLOCK 17 — 1/F FLOOR PLAN (UPPER DUPLEX)



第17座地下及1樓A單位的改動工程包括：

- (F) 原樓梯的扶手被移除。

Alteration works for Flat A, G/F & 1/F of Block 17 includes:

- (F) Original railing of the staircase was demolished.

第17座地下及1樓B單位的改動工程包括：

- (D) 原主人房及儲物間的間隔牆被移除並以不同尺寸的間隔牆整合成主人房及衣帽間。
- (E) 新增浴室門。

Alteration works for Flat B, G/F & 1/F of Block 17 include:

- (D) Original partition walls of master bedroom and store were demolished and integrated into a master bedroom with walk-in-closet by partition walls in different dimensions.
- (E) Bathroom door is added.

因住宅物業的較高樓層的結構牆的厚度遞減，較高樓層的內部面積，一般比較低樓層的內部面積稍大。請參閱本售樓說明書第45頁為住宅物業樓面平面圖而設之備註及名詞及簡稱的圖例。

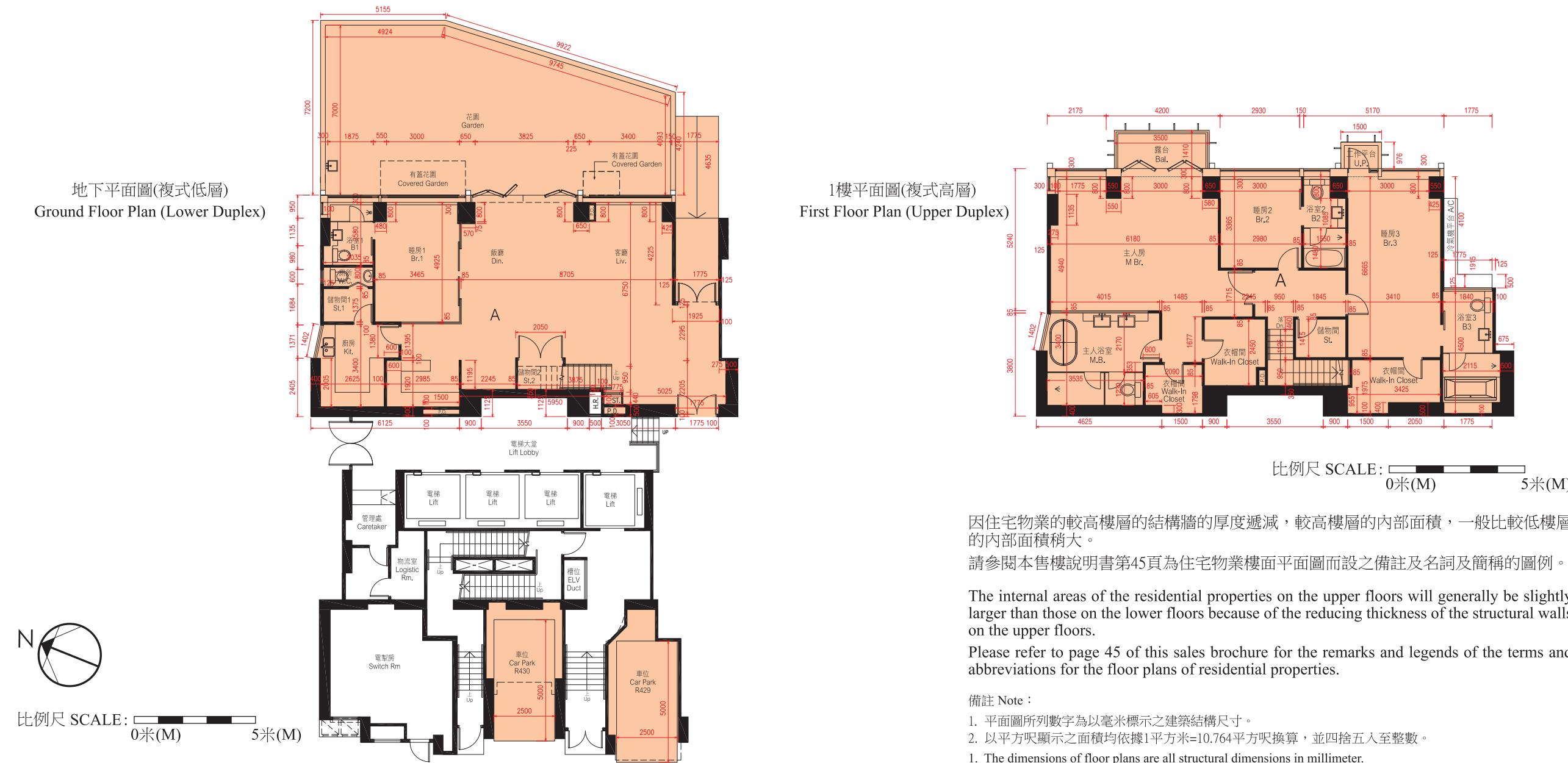
The internal areas of the residential properties on the upper floors will generally be slightly larger than those on the lower floors because of the reducing thickness of the structural walls on the upper floors.

Please refer to page 45 of this sales brochure for the remarks and legends of the terms and abbreviations for the floor plans of residential properties.

每個住宅物業 Each Residential Property	單位 Unit 樓層 Floor	A	B
層與層之間的高度 Floor to Floor Height (毫米 mm)	1/F	3250	3250
樓板(不包括灰泥)的厚度 Thickness of Floor Slab (excluding plaster) (毫米 mm)	1/F	150, 250, 275, 300	150, 200, 225, 250

10. 期數的住宅物業的樓面平面圖 FLOOR PLANS OF RESIDENTIAL PROPERTIES IN THE PHASE

第17座地下及1樓A單位之現狀間隔平面圖 AS IS FLOOR PLANS FOR FLAT A, G/F & 1/F, BLOCK 17



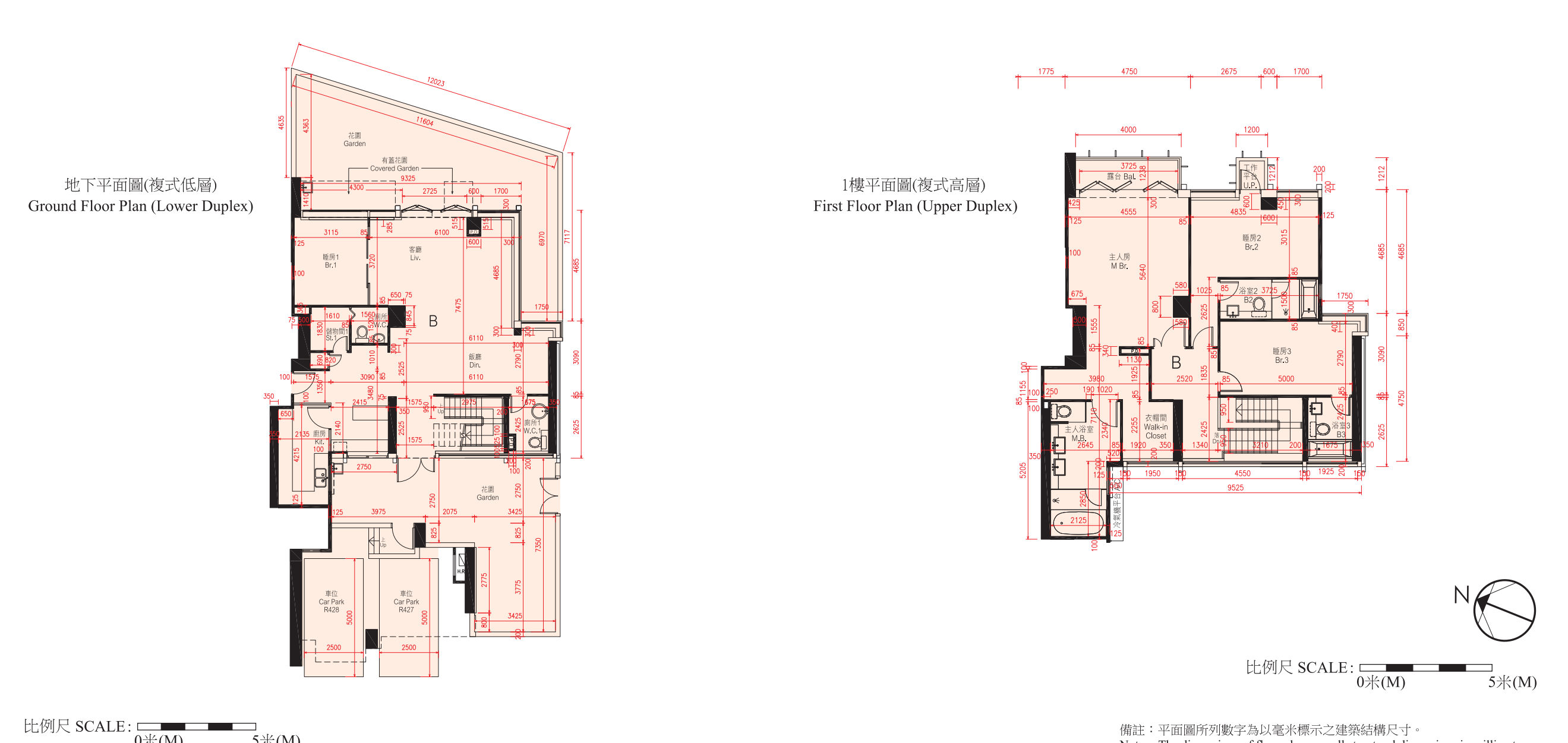
因住宅物業的較高樓層的結構牆的厚度遞減，較高樓層的內部面積，一般比較低樓層的內部面積稍大。
請參閱本售樓說明書第45頁為住宅物業樓面平面圖而設之備註及名詞及簡稱的圖例。

The internal areas of the residential properties on the upper floors will generally be slightly larger than those on the lower floors because of the reducing thickness of the structural walls on the upper floors.
Please refer to page 45 of this sales brochure for the remarks and legends of the terms and abbreviations for the floor plans of residential properties.

- 備註 Note:
1. 平面圖所列數字為以毫米標示之建築結構尺寸。
 2. 以平方呎顯示之面積均依據1平方米=10.764平方呎換算，並四捨五入至整數。
1. The dimensions of floor plans are all structural dimensions in millimeter.
2. Areas in square feet are converted at a rate of 1 square metre to 10.764 square feet and rounded to the nearest integer.

每個住宅物業 Each Residential Property	單位 Unit 樓層 Floor	A
層與層之間的高度 Floor to Floor Height (毫米 mm)	G/F	3500
	1/F	3250
樓板(不包括灰泥)的厚度 Thickness of Floor Slab (excluding plaster) (毫米 mm)	G/F	150, 175, 200, 250, 300
	1/F	150, 250, 275, 300

第17座地下及1樓B單位之現狀間隔平面圖 AS IS FLOOR PLANS FOR FLAT B, G/F & 1/F, BLOCK 17



因住宅物業的較高樓層的結構牆的厚度遞減，較高樓層的內部面積，一般比較低樓層的內部面積稍大。
請參閱本售樓說明書第45頁為住宅物業樓面平面圖而設之備註及名詞及簡稱的圖例。

The internal areas of the residential properties on the upper floors will generally be slightly larger than those on the lower floors because of the reducing thickness of the structural walls on the upper floors.
Please refer to page 45 of this sales brochure for the remarks and legends of the terms and abbreviations for the floor plans of residential properties.

- 備註 Note:
1. 平面圖所列數字為以毫米標示之建築結構尺寸。
 2. 以平方呎顯示之面積均依據1平方米=10.764平方呎換算，並四捨五入至整數。
1. The dimensions of floor plans are all structural dimensions in millimeter.
2. Areas in square feet are converted at a rate of 1 square metre to 10.764 square feet and rounded to the nearest integer.

每個住宅物業 Each Residential Property	單位 Unit 樓層 Floor	B
層與層之間的高度 Floor to Floor Height (毫米 mm)	G/F	3500
	1/F	3250
樓板(不包括灰泥)的厚度 Thickness of Floor Slab (excluding plaster) (毫米 mm)	G/F	150, 175, 250, 300
	1/F	150, 200, 225, 250

註釋 Explanatory Note:

貼鄰住客停車位的面積(不計算入停車位面積或實用面積): 地下A單位為6.763平方米(73平方呎), 地下B單位為8.021平方米(86平方呎)。

由工作平台或露台遮蓋之花園面積(已計算入花園面積): 地下A單位為6.399平方米(69平方呎), 地下B單位為6.406平方米(69平方呎)。根據屋宇署規定, 該面積最少兩邊不可圍封。

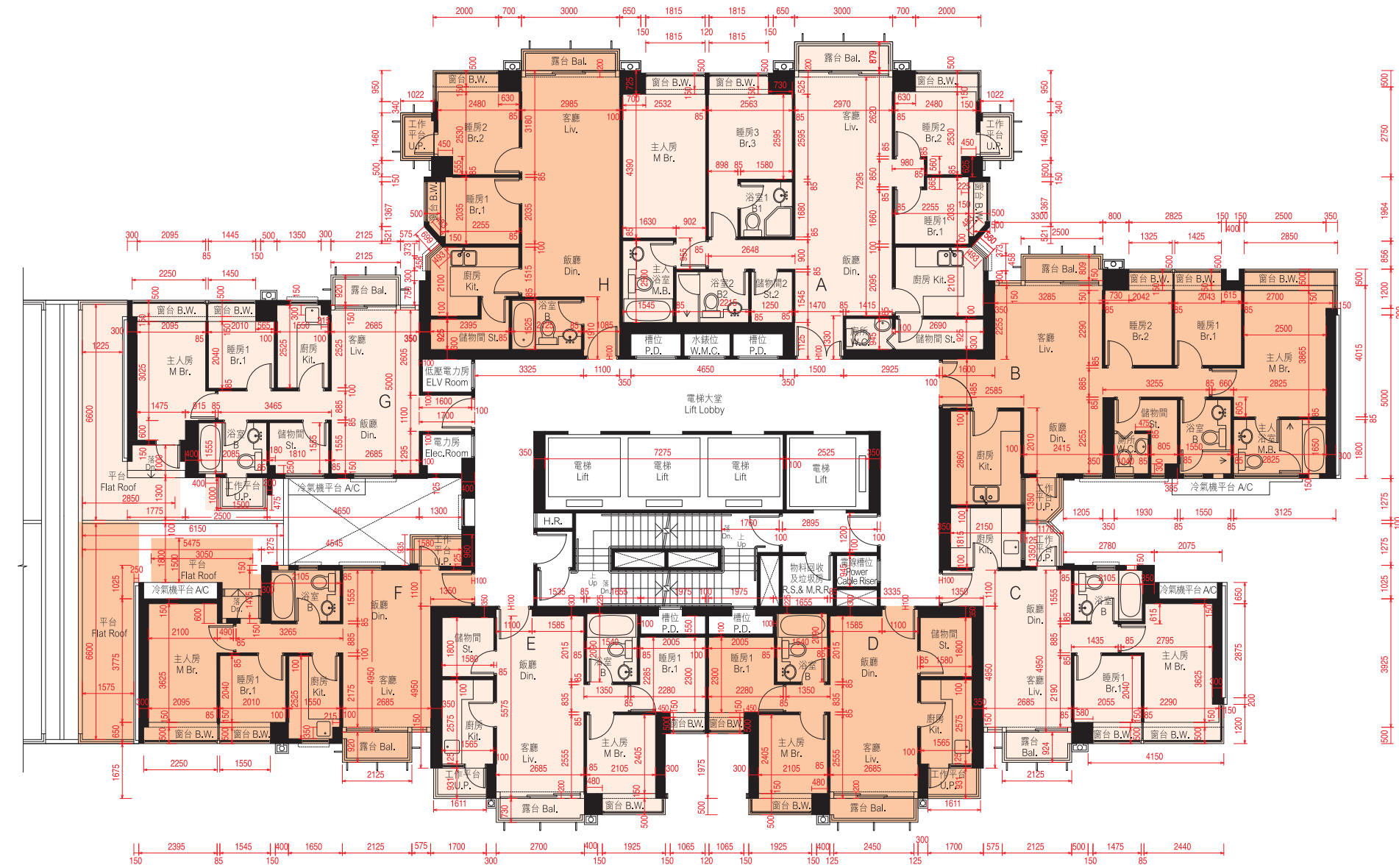
Area adjoining residential parking space (not included in the area of parking space or saleable area): Flat A on G/F is 6.763 sq.m. (73 sq.ft.), Flat B on G/F is 8.021 sq.m. (86 sq.ft.).

Area of garden covered by utility platform or balcony (included in the area of garden): Flat A on G/F is 6.399 sq.m. (69 sq.ft.), Flat B on G/F is 6.406 sq.m. (69 sq.ft.). Such areas shall be unenclosed on at least 2 sides as required by Buildings Department.

10. 期數的住宅物業的樓面平面圖

FLOOR PLANS OF RESIDENTIAL PROPERTIES IN THE PHASE

第17座3樓平面圖 BLOCK 17 — 3/F FLOOR PLAN



比例尺SCALE: 0米(M) 5米(M)

因住宅物業的較高樓層的結構牆的厚度遞減，較高樓層的內部面積，一般比較低樓層的內部面積稍大。
請參閱本售樓說明書第45頁為住宅物業樓面平面圖而設之備註及名詞及簡稱的圖例。

The internal areas of the residential properties on the upper floors will generally be slightly larger than those on the lower floors because of the reducing thickness of the structural walls on the upper floors.

Please refer to page 45 of this sales brochure for the remarks and legends of the terms and abbreviations for the floor plans of residential properties.

平台空白位置為供維修大廈設備使用的公用地方。
Blank areas on the flat roof are common areas for building facility maintenance.

備註：平面圖所列數字為以毫米標示之建築結構尺寸。
Note: The dimensions of floor plans are all structural dimensions in millimeter.

第17座5樓 - 9樓，12樓，15樓 - 17樓及20樓 - 23樓平面圖 BLOCK 17 — 5/F - 9/F, 12/F, 15/F - 17/F & 20/F - 23/F FLOOR PLAN



比例尺SCALE: 0米(M) 5米(M)

因住宅物業的較高樓層的結構牆的厚度遞減，較高樓層的內部面積，一般比較低樓層的內部面積稍大。
請參閱本售樓說明書第45頁為住宅物業樓面平面圖而設之備註及名詞及簡稱的圖例。

The internal areas of the residential properties on the upper floors will generally be slightly larger than those on the lower floors because of the reducing thickness of the structural walls on the upper floors.

Please refer to page 45 of this sales brochure for the remarks and legends of the terms and abbreviations for the floor plans of residential properties.

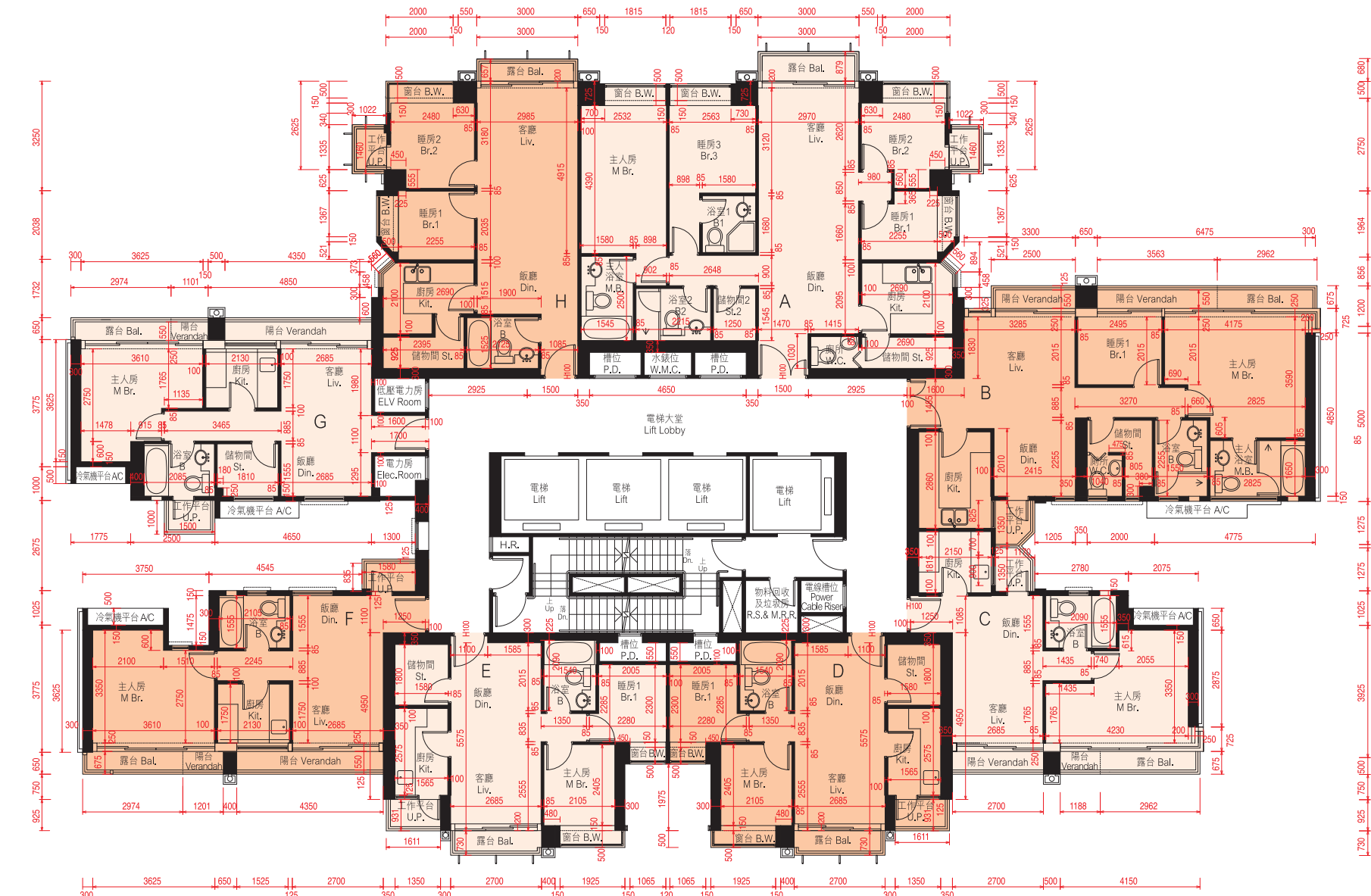
備註：平面圖所列數字為以毫米標示之建築結構尺寸。
Note: The dimensions of floor plans are all structural dimensions in millimeter.

每個住宅物業 Each Residential Property	單位 Unit 樓層 Floor	A	B	C	D	E	F	G	H
層與層之間的高度 Floor to Floor Height (毫米 mm)	3/F	2800, 3150	3150	3150	3150	3150	2800, 3150	3150	2800, 3150
樓板(不包括灰泥)的厚度 Thickness of Floor Slab (excluding plaster) (毫米 mm)	3/F	150, 200, 225	150, 175, 200	150, 200	150, 200	150, 200	150, 200	150, 175, 200	150, 200, 225

每個住宅物業 Each Residential Property	單位 Unit 樓層 Floor	A	B	C	D	E	F	G	H
層與層之間的高度 Floor to Floor Height (毫米 mm)	5/F - 8/F, 12/F, 15/F - 16/F & 20/F - 22/F	3150	3150	3150	3150	3150	3150	3150	3150
	9/F & 17/F	3150	3150	3150	3150	3150	2900, 3150	2850, 3150	3150
	23/F	2800, 3300	3300	2900, 3300	3300	3300	3300	3300	2950, 3300
樓板(不包括灰泥)的厚度 Thickness of Floor Slab (excluding plaster) (毫米 mm)	5/F - 8/F, 12/F, 15/F - 16/F & 20/F - 22/F	150, 200, 225	150, 175, 200	150, 200	150, 200	150, 200	150, 200	150, 175, 200	150, 200, 225
	9/F & 17/F	150, 200, 225	150, 175, 200	150, 200	150, 200	150, 200	150, 200	150, 200	150, 200, 225
	23/F	150, 200, 225	150, 175, 200	150, 200	150, 200	150, 200	150, 200	150, 200	150, 200, 225

10. 期數的住宅物業的樓面平面圖 FLOOR PLANS OF RESIDENTIAL PROPERTIES IN THE PHASE

第17座10樓及18樓平面圖 BLOCK 17 — 10/F & 18/F FLOOR PLAN



比例尺SCALE: 0米(M) 5米(M)

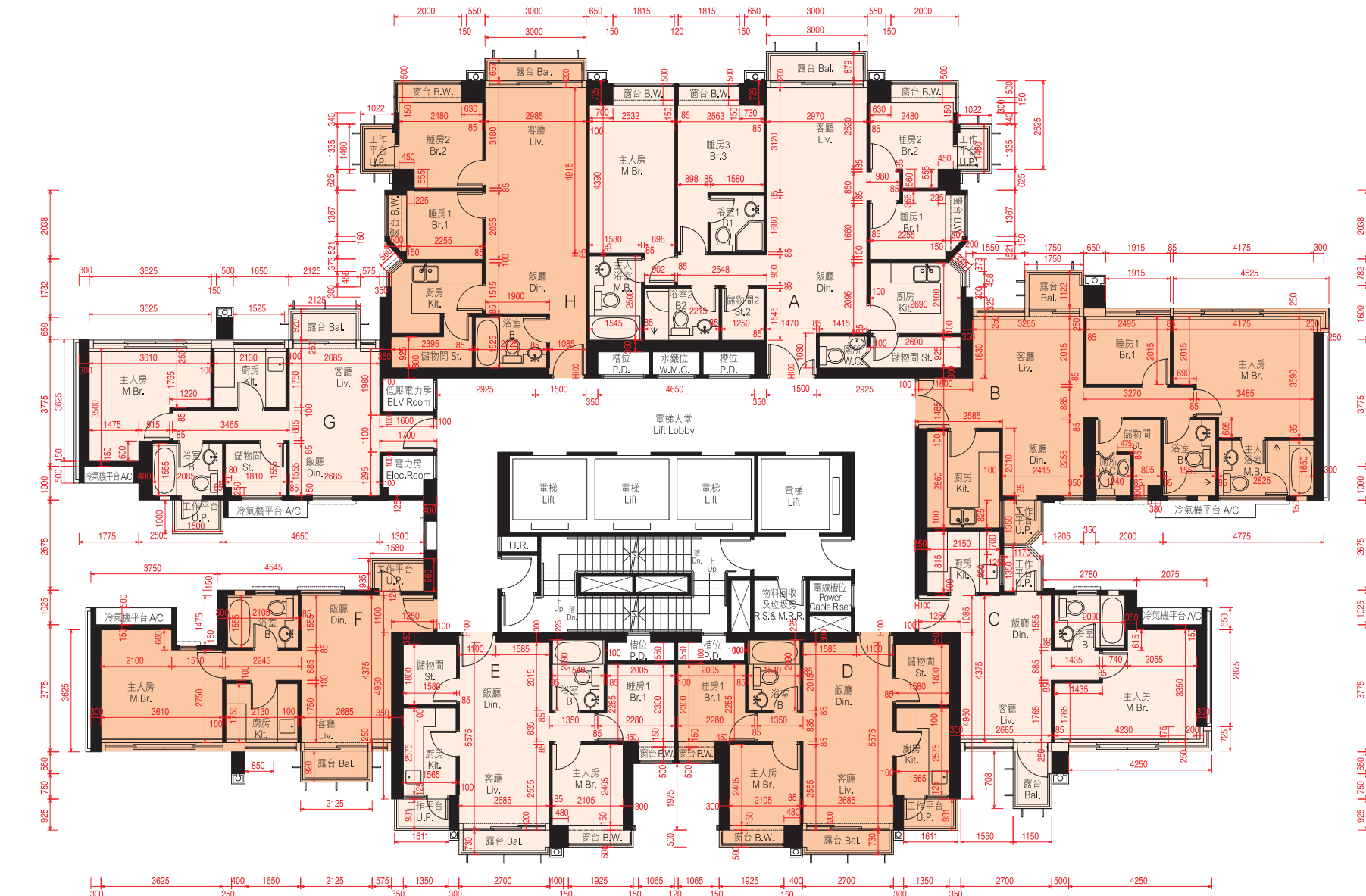
因住宅物業的較高樓層的結構牆的厚度遞減，較高樓層的內部面積，一般比較低樓層的內部面積稍大。
請參閱本售樓說明書第45頁為住宅物業樓面平面圖而設之備註及名詞及簡稱的圖例。

The internal areas of the residential properties on the upper floors will generally be slightly larger than those on the lower floors because of the reducing thickness of the structural walls on the upper floors.

Please refer to page 45 of this sales brochure for the remarks and legends of the terms and abbreviations for the floor plans of residential properties.

備註：平面圖所列數字為以毫米標示之建築結構尺寸。
Note: The dimensions of floor plans are all structural dimensions in millimeter.

第17座11樓及19樓平面圖 BLOCK 17 — 11/F & 19/F FLOOR PLAN



比例尺SCALE: 0米(M) 5米(M)

因住宅物業的較高樓層的結構牆的厚度遞減，較高樓層的內部面積，一般比較低樓層的內部面積稍大。
請參閱本售樓說明書第45頁為住宅物業樓面平面圖而設之備註及名詞及簡稱的圖例。

The internal areas of the residential properties on the upper floors will generally be slightly larger than those on the lower floors because of the reducing thickness of the structural walls on the upper floors.

Please refer to page 45 of this sales brochure for the remarks and legends of the terms and abbreviations for the floor plans of residential properties.

備註：平面圖所列數字為以毫米標示之建築結構尺寸。
Note: The dimensions of floor plans are all structural dimensions in millimeter.

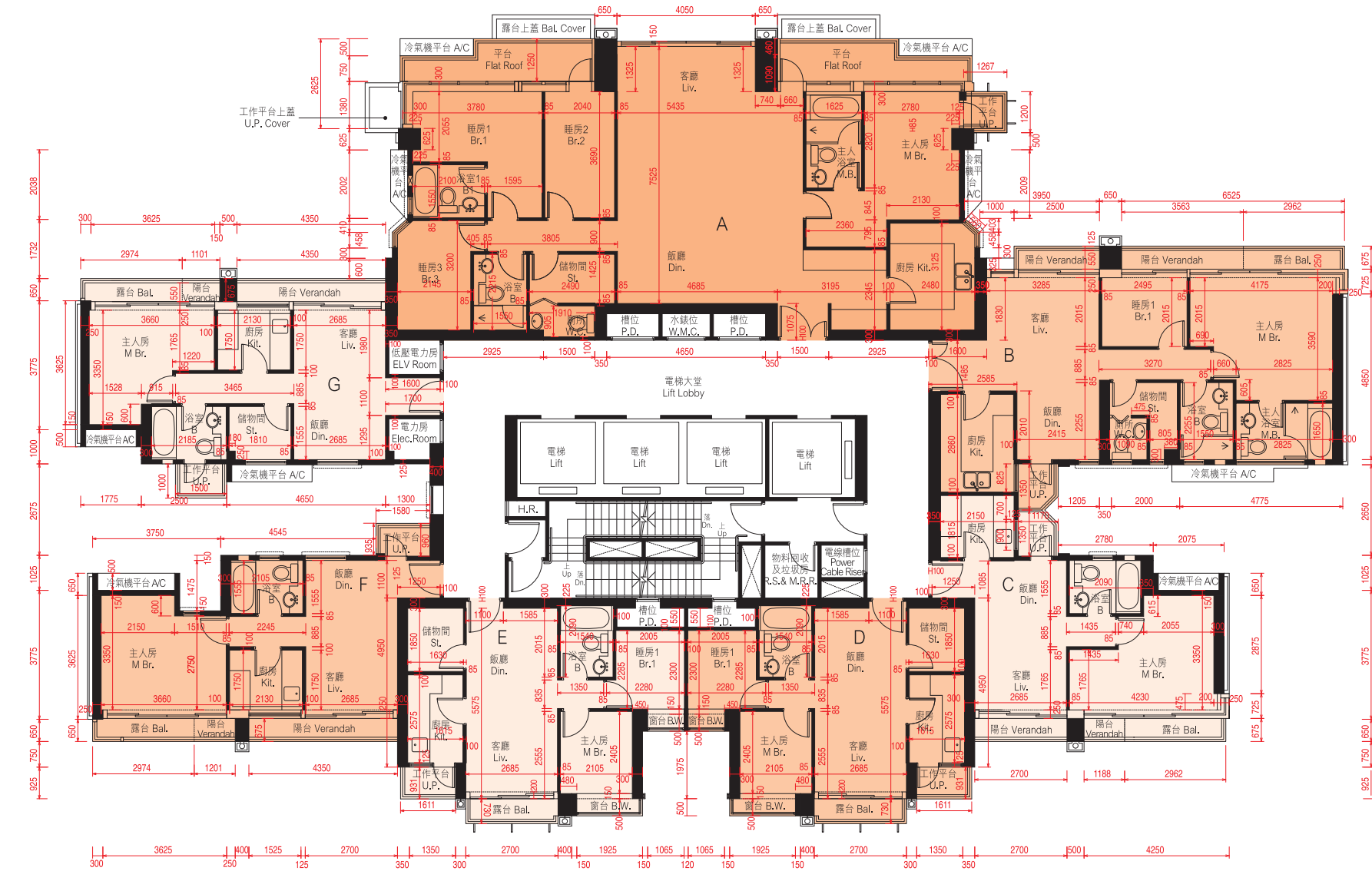
每個住宅物業 Each Residential Property	單位 Unit	A	B	C	D	E	F	G	H
層與層之間的高度 Floor to Floor Height (毫米 mm)	樓層 Floor 10/F & 18/F	3150	3150	3150	3150	3150	3150	3150	3150
樓板(不包括灰泥)的厚度 Thickness of Floor Slab (excluding plaster) (毫米 mm)	10/F & 18/F	150, 200, 225	150, 175, 225	150, 300	150, 200	150, 200	150, 200	150, 200	150, 200, 225

每個住宅物業 Each Residential Property	單位 Unit	A	B	C	D	E	F	G	H
層與層之間的高度 Floor to Floor Height (毫米 mm)	樓層 Floor 11/F & 19/F	2800, 3150	3100, 3150	3150	3100, 3150	3100, 3150	3100, 3150	3150	3150
樓板(不包括灰泥)的厚度 Thickness of Floor Slab (excluding plaster) (毫米 mm)	11/F & 19/F	150, 200, 225	150, 175, 200	150, 200	150, 200	150, 200	150, 200	150, 200	150, 200, 225

10. 期數的住宅物業的樓面平面圖

FLOOR PLANS OF RESIDENTIAL PROPERTIES IN THE PHASE

第17座25樓平面圖 BLOCK 17 — 25/F FLOOR PLAN



比例尺SCALE: 0米(M) 5米(M)

因住宅物業的較高樓層的結構牆的厚度遞減，較高樓層的內部面積，一般比較低樓層的內部面積稍大。
請參閱本售樓說明書第45頁為住宅物業樓面平面圖而設之備註及名詞及簡稱的圖例。

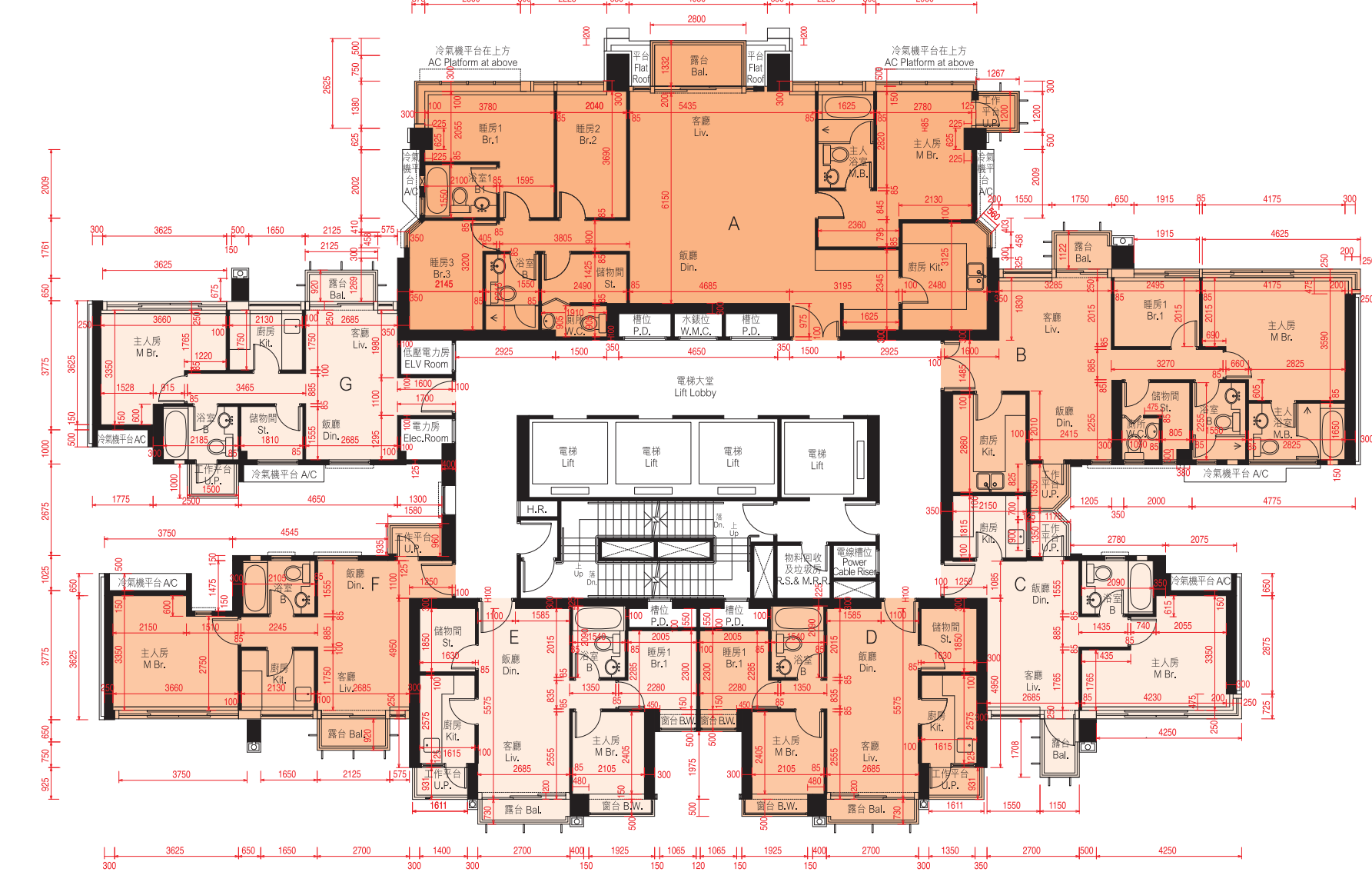
The internal areas of the residential properties on the upper floors will generally be slightly larger than those on the lower floors because of the reducing thickness of the structural walls on the upper floors.

Please refer to page 45 of this sales brochure for the remarks and legends of the terms and abbreviations for the floor plans of residential properties.

備註：平面圖所列數字為以毫米標示之建築結構尺寸。
Note : The dimensions of floor plans are all structural dimensions in millimeter.

每個住宅物業 Each Residential Property	單位 Unit 樓層 Floor	A	B	C	D	E	F	G
層與層之間的高度 Floor to Floor Height (毫米 mm)	25/F	2950, 3300	3300	3300	3300	3300	3300	3300
樓板(不包括灰泥)的厚度 Thickness of Floor Slab (excluding plaster) (毫米 mm)	25/F	150, 200, 225	150, 175, 225	150, 300	150, 200	150, 200	150, 200	150, 200

第17座26樓平面圖 BLOCK 17 — 26/F FLOOR PLAN



比例尺SCALE: 0米(M) 5米(M)

因住宅物業的較高樓層的結構牆的厚度遞減，較高樓層的內部面積，一般比較低樓層的內部面積稍大。
請參閱本售樓說明書第45頁為住宅物業樓面平面圖而設之備註及名詞及簡稱的圖例。

The internal areas of the residential properties on the upper floors will generally be slightly larger than those on the lower floors because of the reducing thickness of the structural walls on the upper floors.

Please refer to page 45 of this sales brochure for the remarks and legends of the terms and abbreviations for the floor plans of residential properties.

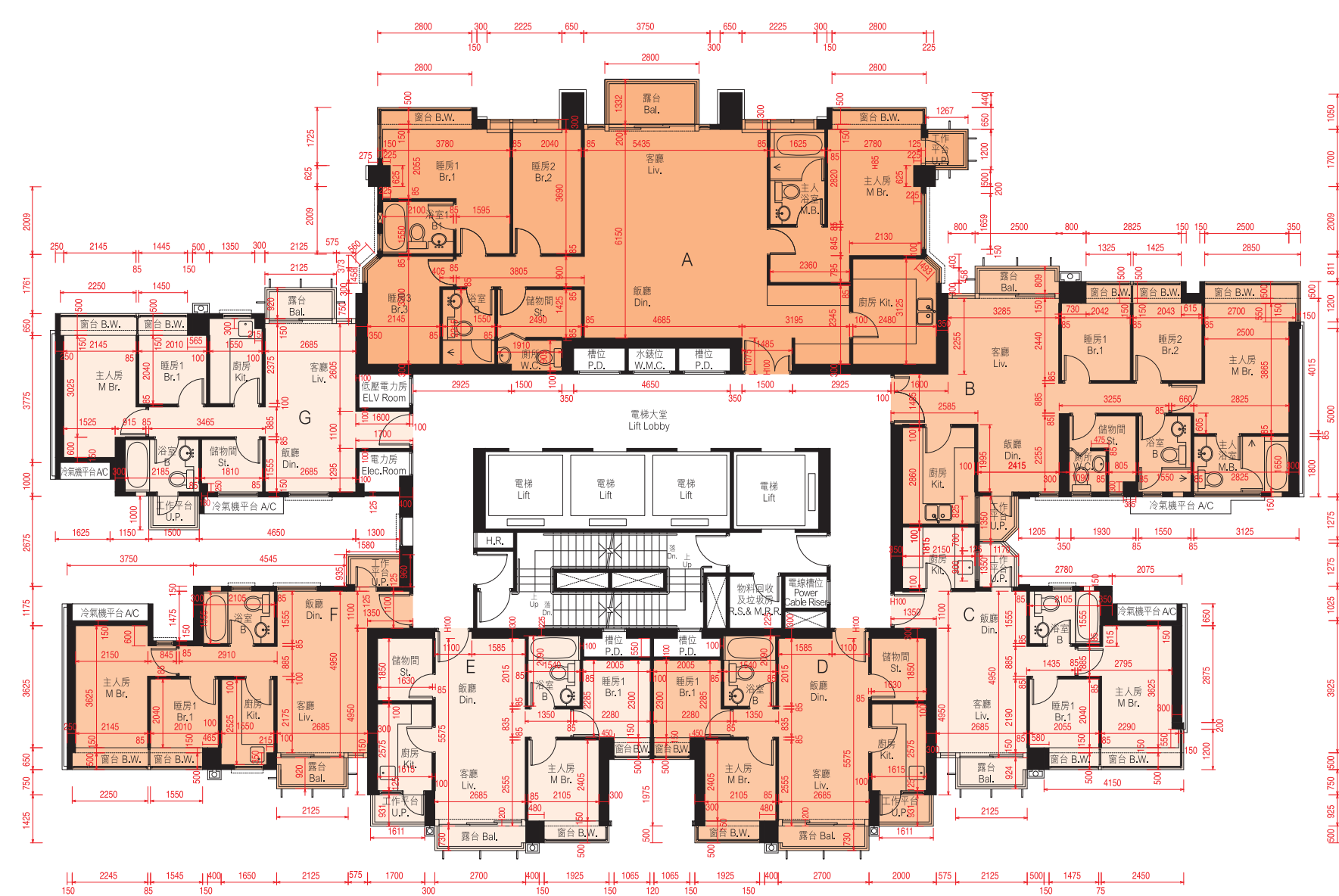
備註：平面圖所列數字為以毫米標示之建築結構尺寸。
Note : The dimensions of floor plans are all structural dimensions in millimeter.

每個住宅物業 Each Residential Property	單位 Unit 樓層 Floor	A	B	C	D	E	F	G
層與層之間的高度 Floor to Floor Height (毫米 mm)	26/F	3150	3150	3150	3150	3150	3150	3150
樓板(不包括灰泥)的厚度 Thickness of Floor Slab (excluding plaster) (毫米 mm)	26/F	200, 225, 275	150, 175, 200	150, 200	150, 200	150, 200	150, 200	150, 200

10. 期數的住宅物業的樓面平面圖

FLOOR PLANS OF RESIDENTIAL PROPERTIES IN THE PHASE

第17座27樓 - 30樓平面圖 BLOCK 17 — 27/F - 30/F FLOOR PLAN



比例尺SCALE: 0米(M) 5米(M)

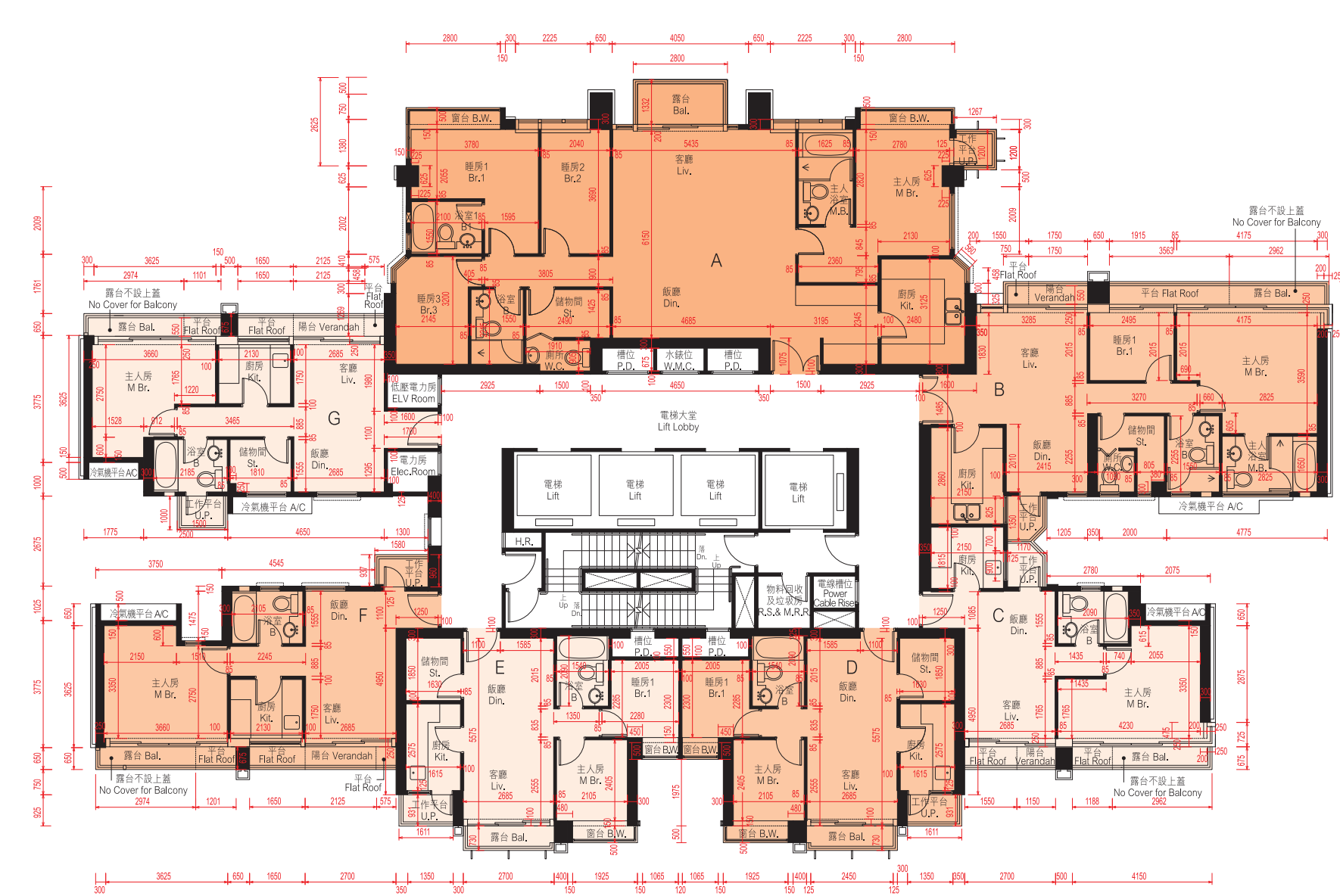
因住宅物業的較高樓層的結構牆的厚度遞減，較高樓層的內部面積，一般比較低樓層的內部面積稍大。請參閱本售樓說明書第45頁為住宅物業樓面平面圖而設之備註及名詞及簡稱的圖例。

The internal areas of the residential properties on the upper floors will generally be slightly larger than those on the lower floors because of the reducing thickness of the structural walls on the upper floors.

Please refer to page 45 of this sales brochure for the remarks and legends of the terms and abbreviations for the floor plans of residential properties.

備註：平面圖所列數字為以毫米標示之建築結構尺寸。
Note : The dimensions of floor plans are all structural dimensions in millimeter.

第17座31樓平面圖 BLOCK 17 — 31/F FLOOR PLAN



比例尺SCALE: 0米(M) 5米(M)

因住宅物業的較高樓層的結構牆的厚度遞減，較高樓層的內部面積，一般比較低樓層的內部面積稍大。請參閱本售樓說明書第45頁為住宅物業樓面平面圖而設之備註及名詞及簡稱的圖例。

The internal areas of the residential properties on the upper floors will generally be slightly larger than those on the lower floors because of the reducing thickness of the structural walls on the upper floors.

Please refer to page 45 of this sales brochure for the remarks and legends of the terms and abbreviations for the floor plans of residential properties.

備註：平面圖所列數字為以毫米標示之建築結構尺寸。
Note : The dimensions of floor plans are all structural dimensions in millimeter.

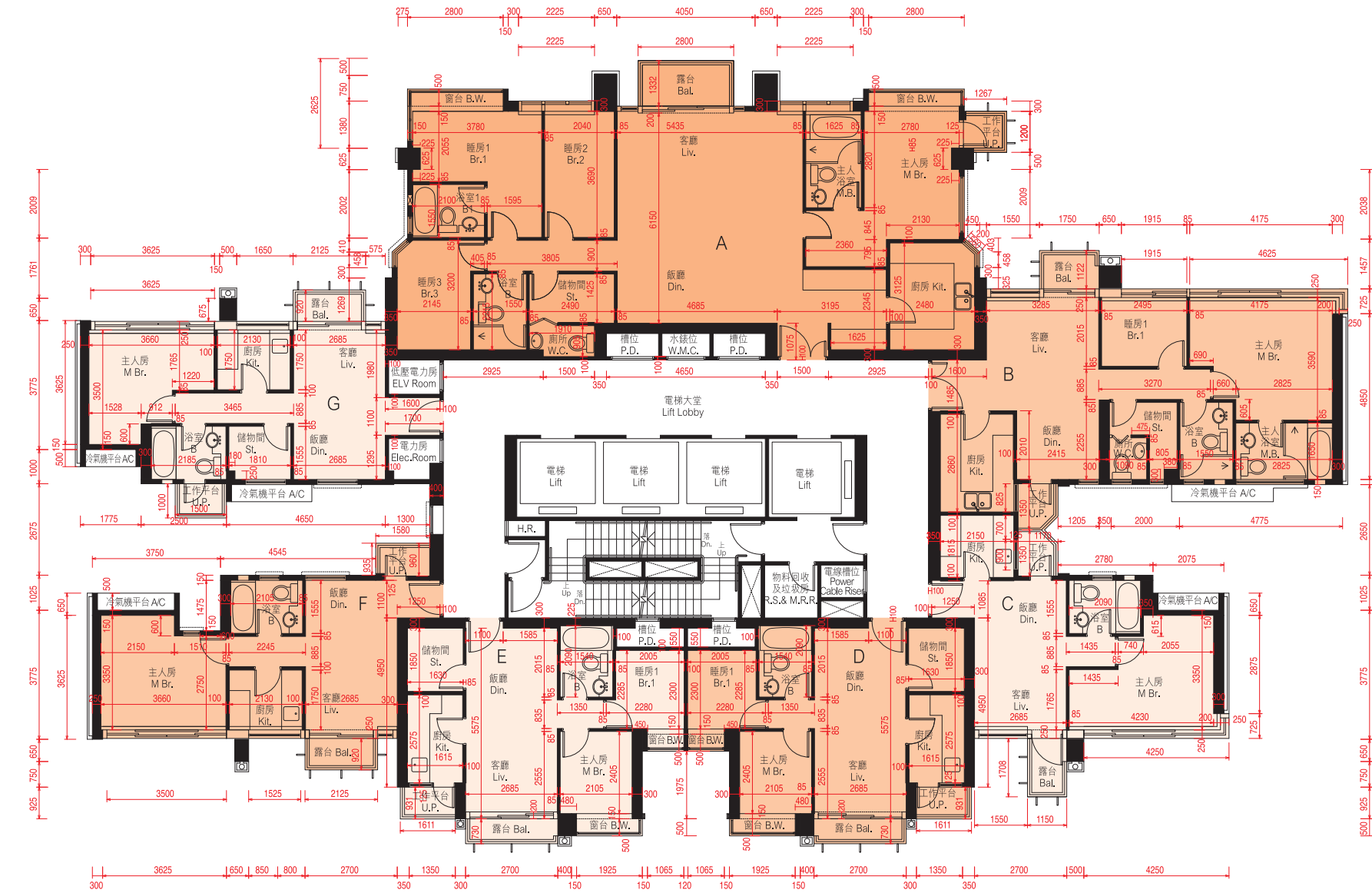
每個住宅物業 Each Residential Property	樓層 Floor	單位 Unit	A	B	C	D	E	F	G
層與層之間的高度 Floor to Floor Height (毫米 mm)	27/F - 29/F		3150	3150	3150	3150	3150	3150	3150
	30/F		3150	3150	3150	3150	3150	2950, 3150	2950, 3150
樓板(不包括灰泥)的厚度 Thickness of Floor Slab (excluding plaster) (毫米 mm)	27/F - 29/F		200, 225, 275	150, 175, 200	150, 200	150, 200	150, 200	150, 200	150, 200
	30/F		200, 225, 275	150, 175, 200	150, 200	150, 200	150, 200	150, 200	150, 200

每個住宅物業 Each Residential Property	樓層 Floor	單位 Unit	A	B	C	D	E	F	G
層與層之間的高度 Floor to Floor Height (毫米 mm)	31/F		3150	3150	3150	3150	3150	3150	3150
樓板(不包括灰泥)的厚度 Thickness of Floor Slab (excluding plaster) (毫米 mm)	31/F		200, 225, 275	150, 175, 225	150, 300	150, 200	150, 200	150, 200	150, 200

10. 期數的住宅物業的樓面平面圖

FLOOR PLANS OF RESIDENTIAL PROPERTIES IN THE PHASE

第17座32樓平面圖 BLOCK 17 — 32/F FLOOR PLAN



比例尺SCALE: 0米(M) 5米(M)

因住宅物業的較高樓層的結構牆的厚度遞減，較高樓層的內部面積，一般比較低樓層的內部面積稍大。
請參閱本售樓說明書第45頁為住宅物業樓面平面圖而設之備註及名詞及簡稱的圖例。

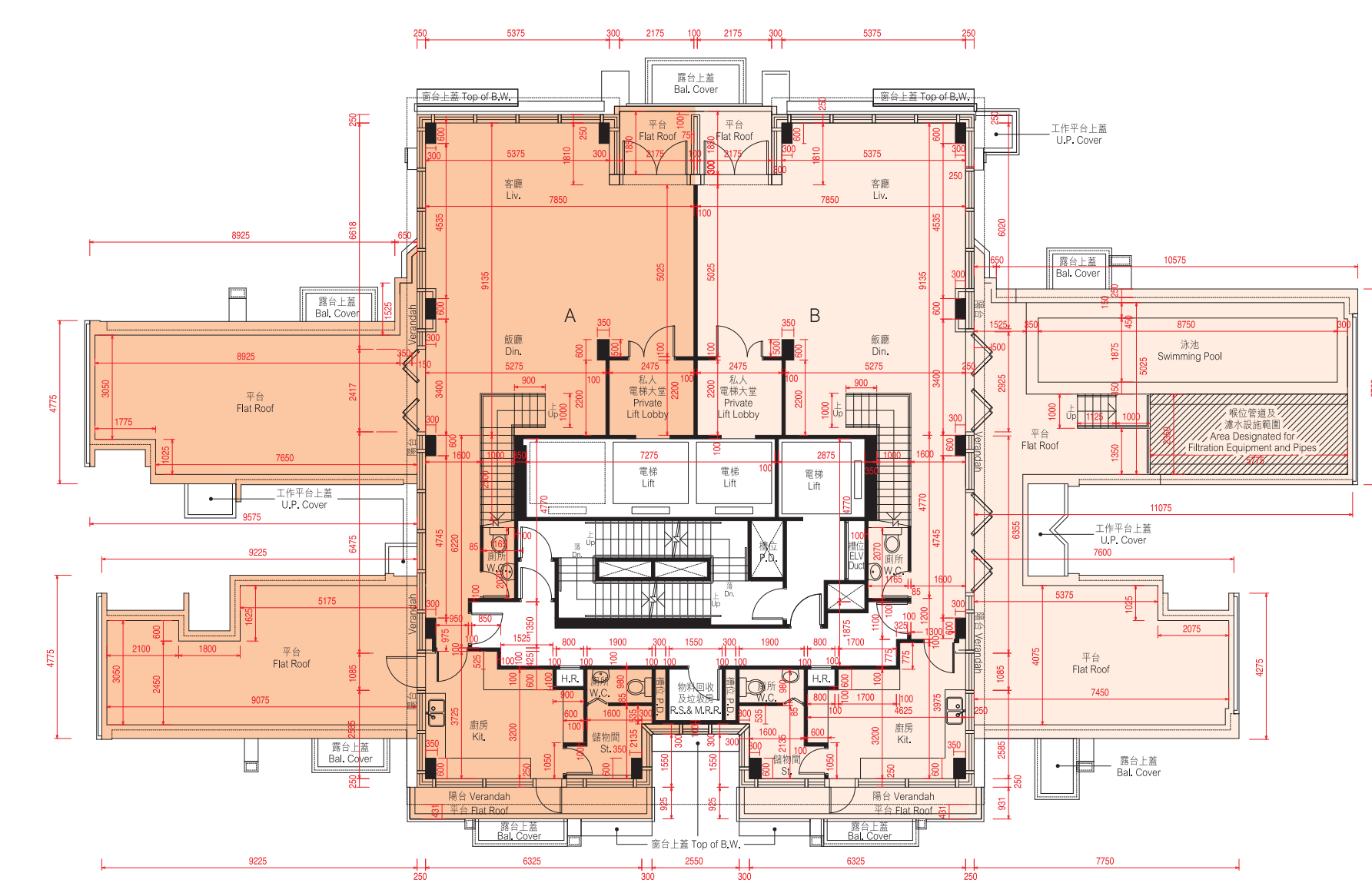
The internal areas of the residential properties on the upper floors will generally be slightly larger than those on the lower floors because of the reducing thickness of the structural walls on the upper floors.
Please refer to page 45 of this sales brochure for the remarks and legends of the terms and abbreviations for the floor plans of residential properties.

- * 包括800毫米厚之結構轉換層。
- * 包括1100毫米厚之結構轉換層及混凝土填充層。
- * Including 800mm thick transfer plate.
- * Including 1100mm thick transfer plate and mass concrete fill.

備註：平面圖所列數字為以毫米標示之建築結構尺寸。
Note: The dimensions of floor plans are all structural dimensions in millimeter.

每個住宅物業 Each Residential Property	單位 Unit	A	B	C	D	E	F	G
層與層之間的高度 Floor to Floor Height (毫米 mm)	32/F	3900#, 4200*	3350, 3500, 3900#, 4200*	3500, 3900#, 4200*	3900#, 4200*	3900#, 4200*	3500, 3900#, 4200*	3500, 3900#, 4200*
樓板(不包括灰泥)的厚度 Thickness of Floor Slab (excluding plaster) (毫米 mm)	32/F	200, 225, 800, 1100	150, 225, 250, 800, 1100	150, 200, 250, 300, 800, 1100	200, 800, 1100	200, 800, 1100	150, 200, 250, 800, 1100	150, 225, 250, 800, 1100

第17座33樓平面圖 (複式低層) BLOCK 17 — 33/F FLOOR PLAN (LOWER DUPLEX)



比例尺SCALE: 0米(M) 5米(M)

- 備註 Note:
1. 平面圖所列數字為以毫米標示之建築結構尺寸。
 2. 以平方呎顯示之面積均依據1平方米=10.764平方呎換算，並四捨五入至整數。
- The dimensions of floor plans are all structural dimensions in millimeter.
Areas in square feet are converted at a rate of 1 square metre to 10.764 square feet and rounded to the nearest integer.

註釋 Explanatory Note:

已預留作喉位管道及濾水設施之沒有遮蓋的面積(已計算入平台面積): 33樓B單位為13.571平方米(146平方呎)。
因住宅物業的較高樓層的結構牆的厚度遞減，較高樓層的內部面積，一般比較低樓層的內部面積稍大。
請參閱本售樓說明書第45頁為住宅物業樓面平面圖而設之備註及名詞及簡稱的圖例。

Uncovered area designated for filtration equipment and pipes (included in the area of flat roof): Flat B on 33/F is 13.571 sq.m. (146 sq.ft.).

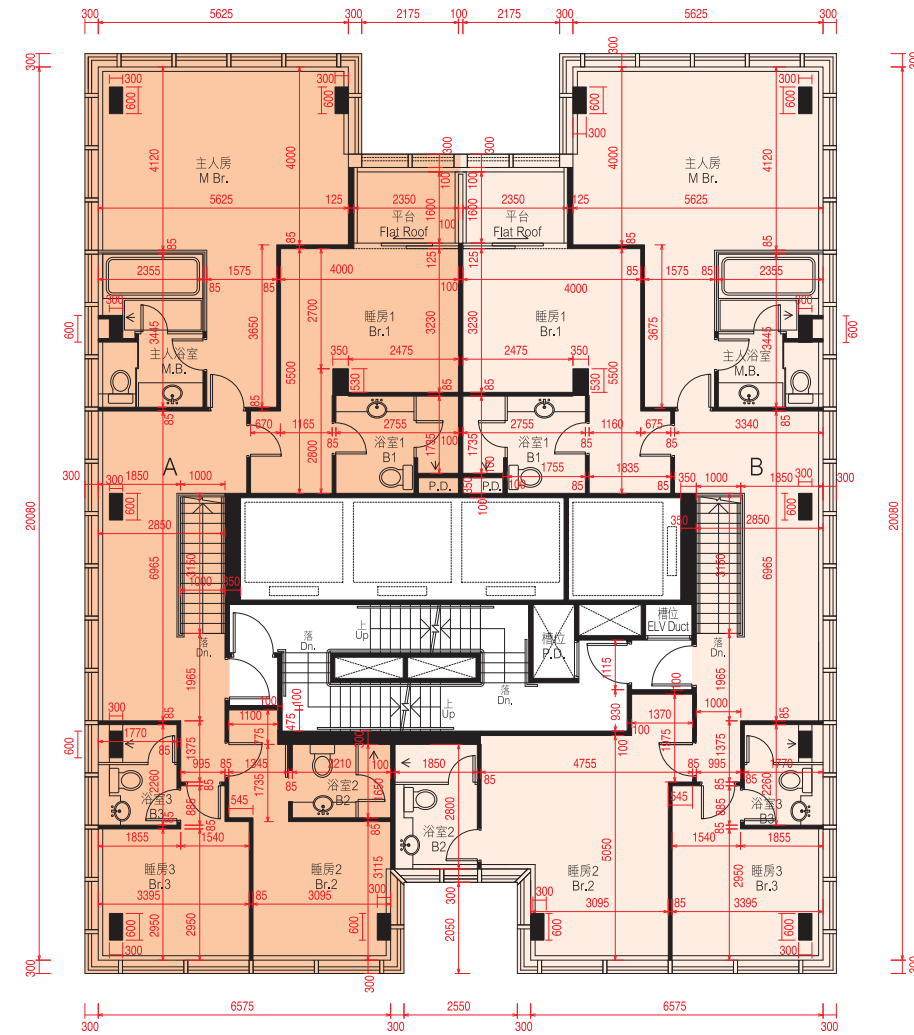
The internal areas of the residential properties on the upper floors will generally be slightly larger than those on the lower floors because of the reducing thickness of the structural walls on the upper floors.
Please refer to page 45 of this sales brochure for the remarks and legends of the terms and abbreviations for the floor plans of residential properties.

每個住宅物業 Each Residential Property	單位 Unit	A	B
層與層之間的高度 Floor to Floor Height (毫米 mm)	33/F	3340, 3500	3340, 3500
樓板(不包括灰泥)的厚度 Thickness of Floor Slab (excluding plaster) (毫米 mm)	33/F	140, 300	140, 300

10. 期數的住宅物業的樓面平面圖

FLOOR PLANS OF RESIDENTIAL PROPERTIES IN THE PHASE

第17座35樓平面圖(複式高層) BLOCK 17 — 35/F FLOOR PLAN (UPPER DUPLEX)



比例尺SCALE: 0米(M) 5米(M)

因住宅物業的較高樓層的結構牆的厚度遞減，較高樓層的內部面積，一般比較低樓層的內部面積稍大。
請參閱本售樓說明書第45頁為住宅物業樓面平面圖而設之備註及名詞及簡稱的圖例。

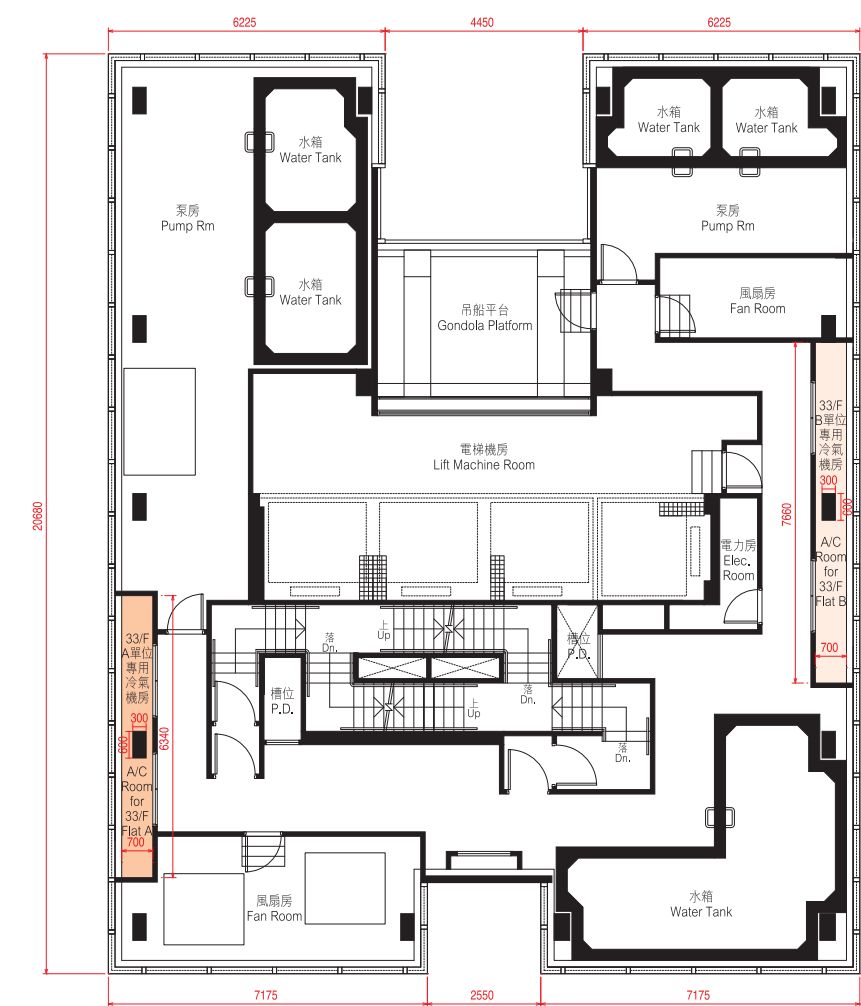
The internal areas of the residential properties on the upper floors will generally be slightly larger than those on the lower floors because of the reducing thickness of the structural walls on the upper floors.

Please refer to page 45 of this sales brochure for the remarks and legends of the terms and abbreviations for the floor plans of residential properties.

每個住宅物業 Each Residential Property	單位 Unit 樓層 Floor	A	B
層與層之間的高度 Floor to Floor Height (毫米 mm)	35/F	3250, 3500	3250, 3500
樓板(不包括灰泥)的厚度 Thickness of Floor Slab (excluding plaster) (毫米 mm)	35/F	150, 200	150, 200

備註：平面圖所列數字為以毫米標示之建築結構尺寸。
Note: The dimensions of floor plans are all structural dimensions in millimeter.

第17座機電樓層平面圖 BLOCK 17 — ELECTRICAL & MECHANICAL FLOOR PLAN



比例尺SCALE: 0米(M) 5米(M)

每個住宅單位的層與層之間的高度：不適用。
每個住宅單位的樓板(不包括灰泥)的厚度：不適用。
因住宅物業的較高樓層的結構牆的厚度遞減，較高樓層的內部面積，一般比較低樓層的內部面積稍大。

The floor-to-floor height of each residential property: Not applicable.
The thickness of the floor slabs (excluding plaster) of each residential property: Not applicable.
The internal areas of the residential properties on the upper floors will generally be slightly larger than those on the lower floors because of the reducing thickness of the structural walls on the upper floors.

備註：平面圖所列數字為以毫米標示之建築結構尺寸。
Note: The dimensions of floor plans are all structural dimensions in millimeter.

名詞及簡稱之圖例 LEGENDS OF THE TERMS AND ABBREVIATIONS

A/C	= 冷氣機平台 Air-conditioning platform
B	= 浴室 Bathroom
B.W.	= 窗台 Bay window
Bal.	= 露台 Balcony
Bal. Cover	= 下層露台上蓋 Top of balcony cover
Br.	= 睡房 Bedroom
Din.	= 飯廳 Dining room
Dn.	= 落 Down
Elec. Room	= 電力房 Electricity room
ELV Duct	= 超低壓電線槽位 Extra-low voltage electricity duct
ELV Room	= 超低壓電力房 Extra-low voltage electricity room
F.R.	= 平台 Flat roof
H.R.	= 喉纜 Hose reel
Kit.	= 廚房 Kitchen
Liv.	= 客廳 Living room
Logistic Rm.	= 物流房 Logistic room
M.B.	= 主人房浴室 Master bathroom
M.Br.	= 主人房 Master bedroom
P.D.	= 管道槽位 Pipe duct
Riser Duct	= 電線槽位 Riser duct
R.S. & M.R.R.	= 垃圾及物料回收房 Refuse storage & material recovery room
St.	= 儲物間 Store
Switch Rm	= 電掣房 Switch room
Top of B.W.	= 下層窗台頂 Top of bay window
U.P.	= 工作平台 Utility platform
U.P. Cover	= 下層工作平台上蓋 Top of utility platform cover
Ver.	= 陽台 Verandah
W.C.	= 廁所 Washing chamber
W.M.C.	= 水錶位 Water meter cabinet

住宅物業的平面圖的備註:

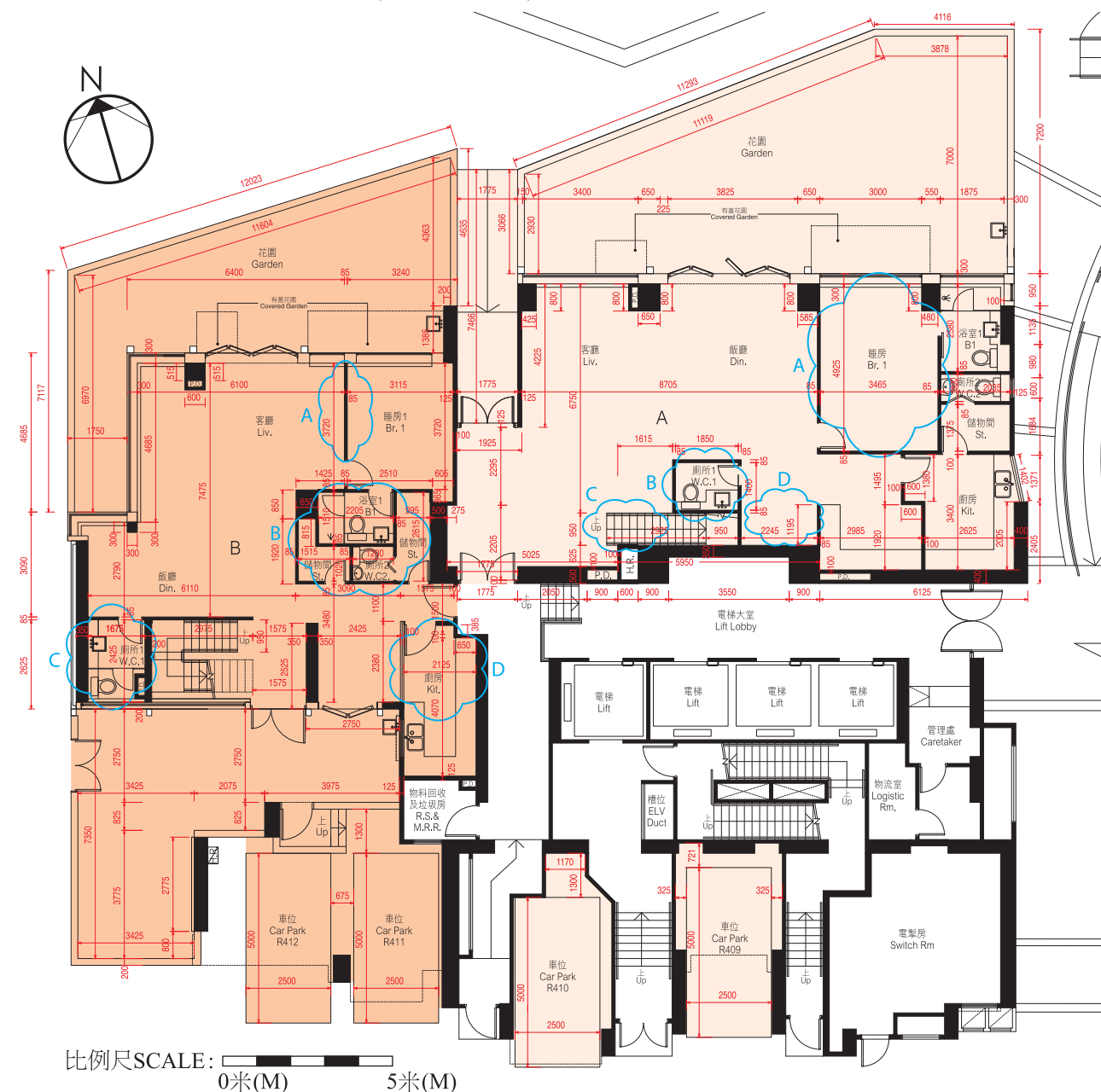
- 部分住宅單位的露台、陽台、工作平台、平台或外牆或設有外露之公用喉管，或外牆裝飾板內藏之公用喉管。
- 部分住宅單位內之部分天花或有跌級樓板，用以安裝上層之機電設備或配合上層之結構、建築設計及/或裝修設計上的需要。
- 部分住宅單位內或設有假陣或假天花用以安裝冷氣喉管及/或其他機電設備。

Remarks for the Floor Plans of Residential Properties:

- Common pipes exposed or enclosed in cladding may be located at the balcony, verandah, utility platform, flat roof or external wall of some residential units.
- There may be sunken slabs at some parts of the ceiling inside some residential units for the installation of mechanical and electrical services of the floor above or due to the structural, architectural and/or decoration design requirements of the floor above.
- There may be ceiling bulkheads or false ceiling inside some residential units for the installation of air-conditioning conduits and/or other mechanical and electrical services.

10. 期數的住宅物業的樓面平面圖 FLOOR PLANS OF RESIDENTIAL PROPERTIES IN THE PHASE

第22座地下平面圖 (複式低層) BLOCK 22 — GROUND FLOOR PLAN (LOWER DUPLEX)



第22座地下及1樓A單位及B單位在發展項目落成後進行小型工程或獲《建築物條例》豁免的工程而有所改動。該等改動的大概位置已於本樓面平面圖中作標示。

Flat A and Flat B, G/F & 1/F of Block 22 have been altered by way of minor works or exempted works under the Buildings Ordinance after completion of the Development. The approximate locations of alteration are indicated on this floor plan.

第22座地下及1樓A單位的改動工程包括:

- (A) 原間隔牆被移除並以不同尺寸の間隔牆取代。原睡房門被移除並以趟門取代。
- (B) 原廁所被移除。
- (C) 原第一級樓梯加闊。
- (D) 升起地台並增設酒櫃。

Alteration works for Flat A, G/F & 1/F of Block 22 include:

- (A) Original partition walls were demolished and replaced by partition walls in different dimensions. Original bedroom door was demolished and replaced by a sliding door.
- (B) Original washing chamber was demolished.
- (C) Original first stair step was widened.
- (D) Platform was raised and wine cellar was added.

第22座地下及1樓B單位的改動工程包括:

- (A) 原睡房1之間隔牆被移除並以不同尺寸の間隔牆及趟門取代。
- (B) 原浴室1、廁所2及兩個儲物間の間隔牆被移除並以不同尺寸の間隔牆整合成儲物間及廁所。
- (C) 原廁所1之室內裝置被移位。
- (D) 原廚房之間隔牆被移除並以不同尺寸の間隔牆取代。

Alteration works for Flat B, G/F & 1/F of Block 22 include:

- (A) Original partition wall of the bedroom was demolished and replaced by partition wall in different dimension together with a sliding door.
- (B) Original partition walls of bathroom 1, washing chamber 2 and two stores were demolished and integrated into store and washing chamber by partition walls in different dimensions.
- (C) Original interior fittings of washing chamber 1 were relocated.
- (D) Original partition walls of the kitchen were demolished and replaced by partition walls in different dimensions.

因住宅物業的較高樓層的結構牆的厚度遞減，較高樓層的內部面積，一般比較低樓層的內部面積稍大。請參閱本售樓說明書第61頁為住宅物業樓面平面圖而設之備註及名詞及簡稱的圖例。

The internal areas of the residential properties on the upper floors will generally be slightly larger than those on the lower floors because of the reducing thickness of the structural walls on the upper floors.

Please refer to page 61 of this sales brochure for the remarks and legends of the terms and abbreviations for the floor plans of residential properties.

備註 Note:

1. 平面圖所列數字為以毫米標示之建築結構尺寸。
 2. 以平方呎顯示之面積均依據1平方米=10.764平方呎換算，並四捨五入至整數。
1. The dimensions of floor plans are all structural dimensions in millimeter.
2. Areas in square feet are converted at a rate of 1 square metre to 10.764 square feet and rounded to the nearest integer.

每個住宅物業 Each Residential Property	單位 Unit 樓層 Floor	A	B
層與層之間的高度 Floor to Floor Height (毫米 mm)	G/F	3500	3500
樓板 (不包括灰泥) 的厚度 Thickness of Floor Slab (excluding plaster) (毫米 mm)	G/F	150, 200, 250, 300	150, 175, 250, 300

註釋 Explanatory Note:

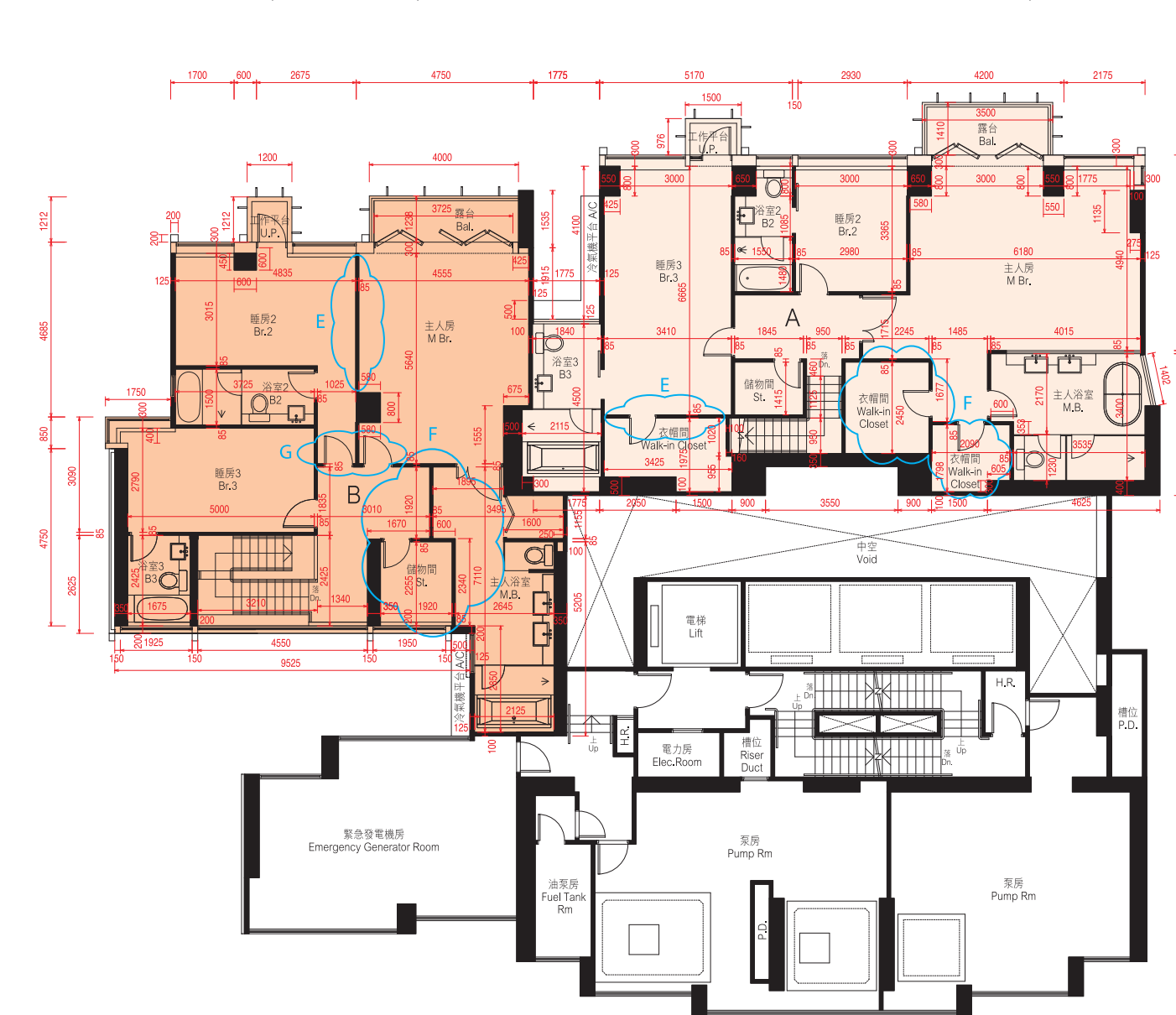
貼鄰住宅停車位的面積(不計算入停車位面積或實用面積): 地下A單位為6.763平方米(73平方呎)，地下B單位為8.021平方米(86平方呎)。

由工作平台或露台遮蓋之花園面積(已計算入花園面積): 地下A單位為6.399平方米(69平方呎)，地下B單位為6.406平方米(69平方呎)。根據屋宇署規定，該面積最少兩邊不可圍封。

Area adjoining residential parking space (not included in the area of parking space or saleable area): Flat A on G/F is 6.763 sq.m. (73 sq.ft.), Flat B on G/F is 8.021 sq.m. (86 sq.ft.).

Area of garden covered by utility platform or balcony (included in the area of garden): Flat A on G/F is 6.399 sq.m. (69 sq.ft.), Flat B on G/F is 6.406 sq.m. (69 sq.ft.). Such areas shall be unenclosed on at least 2 sides as required by Buildings Department.

第22座1樓平面圖 (複式高層) BLOCK 22 — 1/F FLOOR PLAN (UPPER DUPLEX)



第22座地下及1樓A單位的改動工程包括:

- (E) 原衣帽間間隔牆被移除並以不同尺寸の間隔牆及趟門取代。
- (F) 原兩個衣帽間の間隔牆被移除並以不同尺寸の間隔牆及趟門整合成一個較大的衣帽間。

Alteration works for Flat A, G/F & 1/F of Block 22 include:

- (E) Original partition walls of the walk-in closet were demolished and replaced by partition walls in different dimensions and a sliding door.
- (F) Original partition walls of two walk-in closets were demolished and transformed into one large walk-in closet by partition walls in different dimensions and a sliding door.

第22座地下及1樓B單位的改動工程包括:

- (E) 原間隔牆被移除並以不同尺寸の間隔牆取代。
- (F) 原主人房、主人房浴室及儲物間の間隔牆被移除並以不同尺寸の間隔牆整合成主人房內之衣帽間、主人房浴室及儲物間。
- (G) 原間隔牆被移除並以不同尺寸の間隔牆及門取代。

Alteration works for Flat B, G/F & 1/F of Block 22 include:

- (E) Original partition wall was demolished and replaced by partition wall in different dimension.
- (F) Original partition walls of the master bedroom, master bathroom and store were demolished and integrated as a walk-in closet, master bathroom and store inside the master bedroom by partition walls in different dimensions.
- (G) Original partition wall was demolished and replaced by partition walls and doors in different dimensions.

比例尺SCALE: 0米(M) 5米(M)

備註: 平面圖所列數字為以毫米標示之建築結構尺寸。
Note: The dimensions of floor plans are all structural dimensions in millimeter.

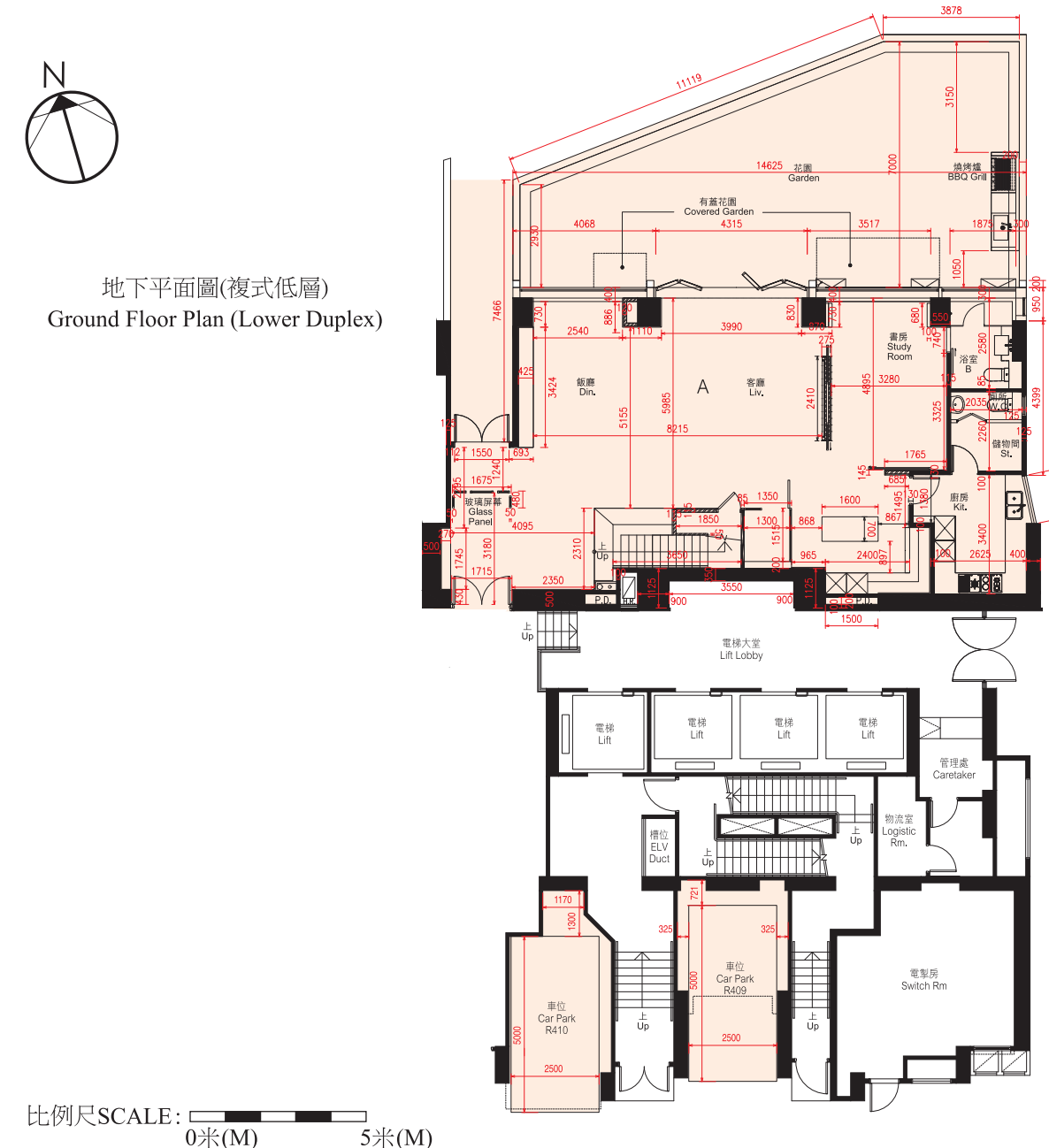
因住宅物業的較高樓層的結構牆的厚度遞減，較高樓層的內部面積，一般比較低樓層的內部面積稍大。請參閱本售樓說明書第61頁為住宅物業樓面平面圖而設之備註及名詞及簡稱的圖例。

The internal areas of the residential properties on the upper floors will generally be slightly larger than those on the lower floors because of the reducing thickness of the structural walls on the upper floors.
Please refer to page 61 of this sales brochure for the remarks and legends of the terms and abbreviations for the floor plans of residential properties.

每個住宅物業 Each Residential Property	單位 Unit 樓層 Floor	A	B
層與層之間的高度 Floor to Floor Height (毫米 mm)	1/F	3250	3250
樓板 (不包括灰泥) 的厚度 Thickness of Floor Slab (excluding plaster) (毫米 mm)	1/F	150, 250, 275, 300, 350	150, 225, 250

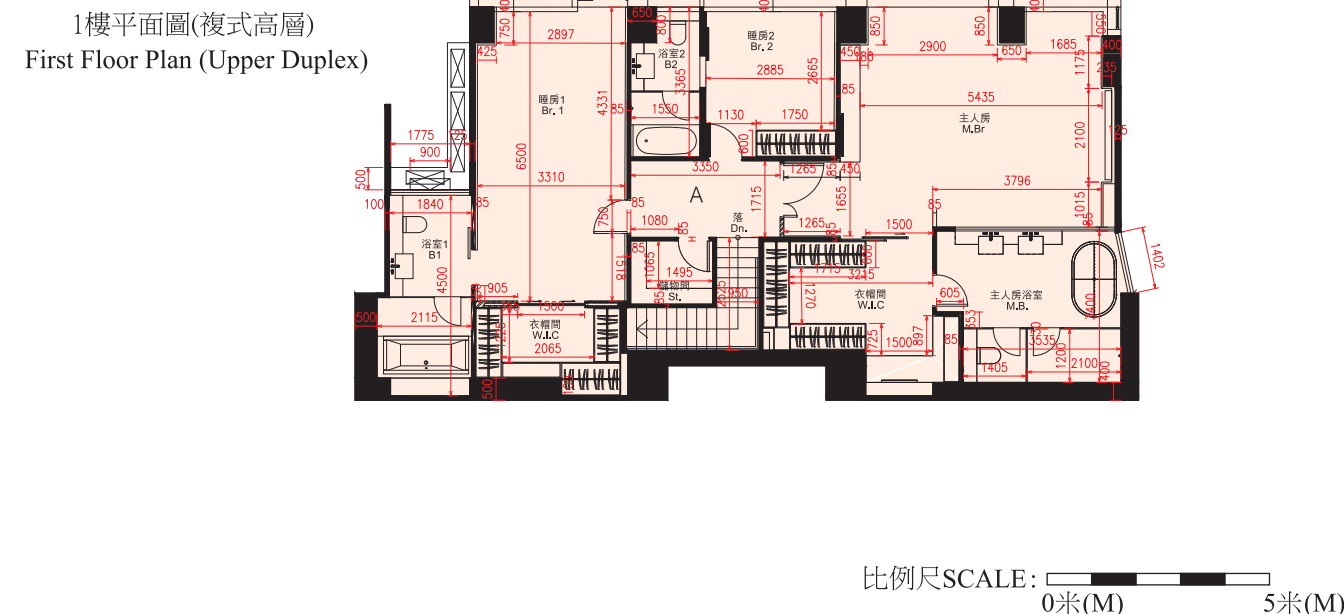
10. 期數的住宅物業的樓面平面圖 FLOOR PLANS OF RESIDENTIAL PROPERTIES IN THE PHASE

第22座地下及1樓A單位之現狀間隔平面圖 FLAT A, G/F & 1/F OF BLOCK 22 — AS IS FLOOR PLAN



註釋 Explanatory Note :

貼鄰住客停車位的面積(不計算入停車位面積或實用面積)：地下A單位為6.763平方米(73平方呎)。
由工作平台或露台遮蓋之花園面積(已計算入花園面積)：地下A單位為6.399平方米(69平方呎)。根據屋宇署規定，該面積最少兩邊不可圍封。
Area adjoining residential parking space (not included in the area of parking space or saleable area): Flat A on G/F is 6.763 sq.m. (73 sq.ft.).
Area of garden covered by utility platform or balcony (included in the area of garden): Flat A on G/F is 6.399 sq.m. (69 sq.ft.). Such area shall be unenclosed on at least 2 sides as required by Buildings Department.



因住宅物業的較高樓層的結構牆的厚度遞減，較高樓層的內部面積，一般比較低樓層的內部面積稍大。請參閱本售樓說明書第61頁為住宅物業樓面平面圖而設之備註及名詞及簡稱的圖例。

The internal areas of the residential properties on the upper floors will generally be slightly larger than those on the lower floors because of the reducing thickness of the structural walls on the upper floors.

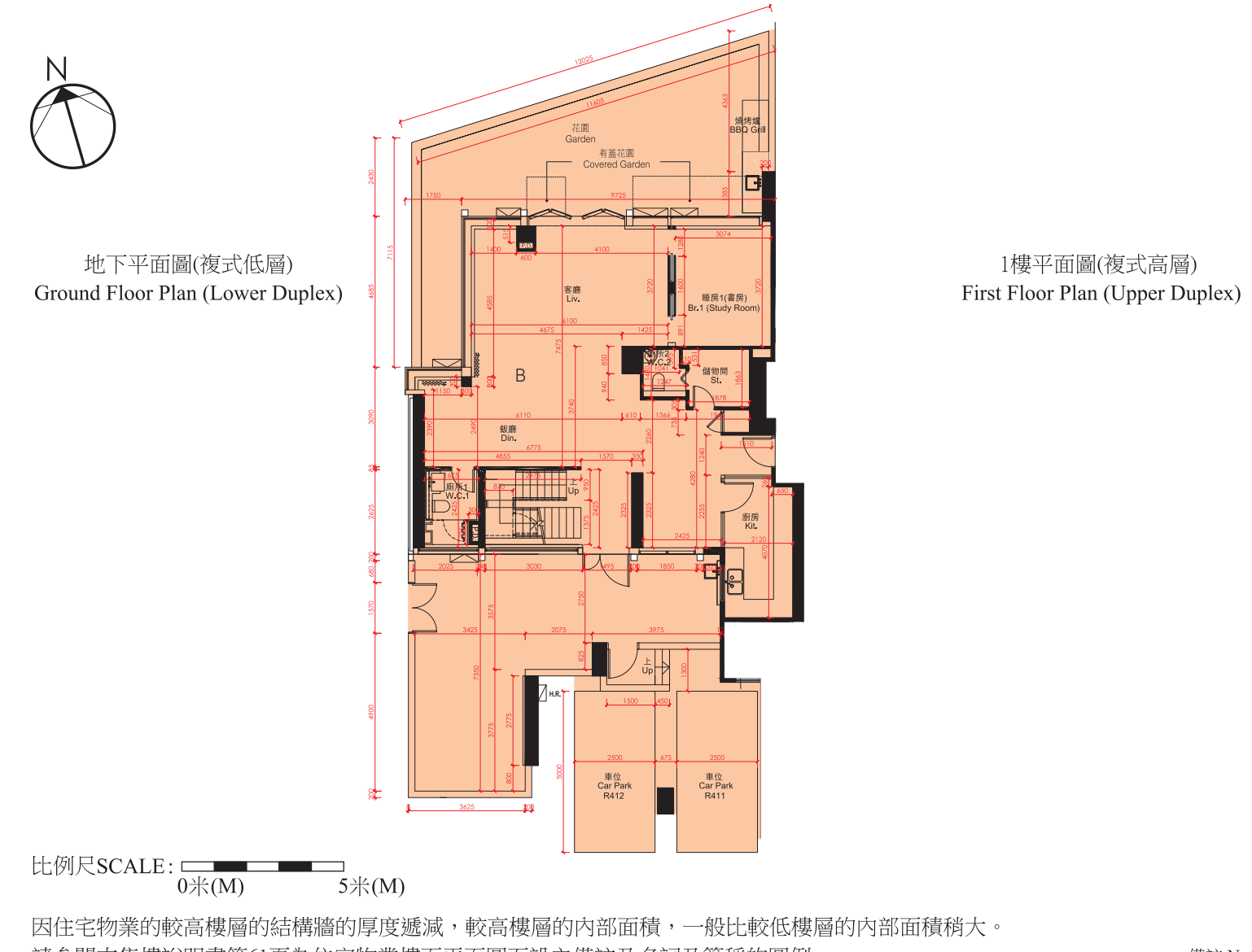
Please refer to page 61 of this sales brochure for the remarks and legends of the terms and abbreviations for the floor plans of residential properties.

備註 Note :

1. 平面圖所列數字為以毫米標示之建築結構尺寸。
 2. 以平方呎顯示之面積均依據1平方米=10.764平方呎換算，並四捨五入至整數。
1. The dimensions of floor plans are all structural dimensions in millimeter.
 2. Areas in square feet are converted at a rate of 1 square metre to 10.764 square feet and rounded to the nearest integer.

每個住宅物業 Each Residential Property	單位 Unit 樓層 Floor	A
層與層之間的高度 Floor to Floor Height (毫米 mm)	G/F	3500
	1/F	3250
樓板(不包括灰泥)的厚度 Thickness of Floor Slab (excluding plaster) (毫米 mm)	G/F	150, 200, 250, 300
	1/F	150, 250, 275, 300, 350

第22座地下及1樓B單位之現狀間隔平面圖 FLAT B, G/F & 1/F OF BLOCK 22 — AS IS FLOOR PLAN



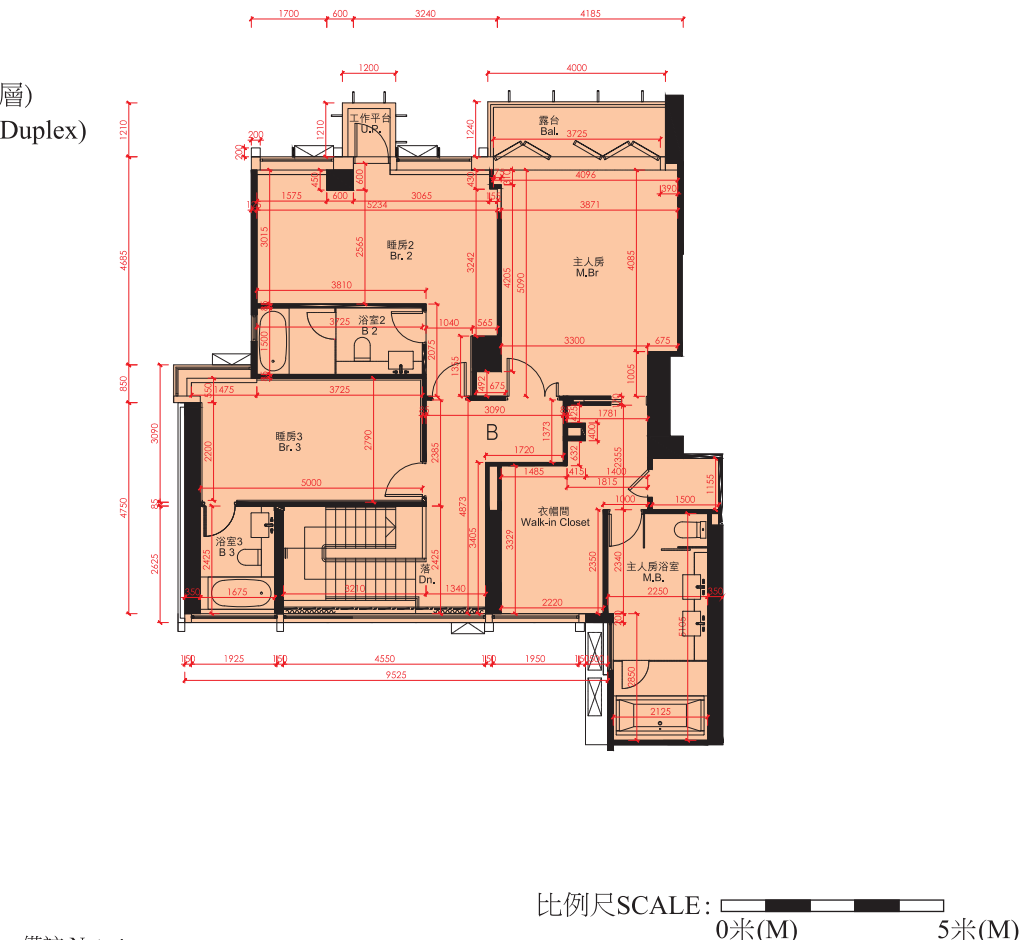
因住宅物業的較高樓層的結構牆的厚度遞減，較高樓層的內部面積，一般比較低樓層的內部面積稍大。請參閱本售樓說明書第61頁為住宅物業樓面平面圖而設之備註及名詞及簡稱的圖例。

The internal areas of the residential properties on the upper floors will generally be slightly larger than those on the lower floors because of the reducing thickness of the structural walls on the upper floors.

Please refer to page 61 of this sales brochure for the remarks and legends of the terms and abbreviations for the floor plans of residential properties.

註釋 Explanatory Note :

貼鄰住客停車位的面積(不計算入停車位面積或實用面積)：地下B單位為8.021平方米(86平方呎)。
由工作平台或露台遮蓋之花園面積(已計算入花園面積)：地下B單位為6.406平方米(69平方呎)。根據屋宇署規定，該面積最少兩邊不可圍封。
Area adjoining residential parking space (not included in the area of parking space or saleable area): Flat B on G/F is 8.021 sq.m. (86 sq.ft.).
Area of garden covered by utility platform or balcony (included in the area of garden): Flat B on G/F is 6.406 sq.m. (69 sq.ft.). Such area shall be unenclosed on at least 2 sides as required by Buildings Department.



備註 Note :

1. 平面圖所列數字為以毫米標示之建築結構尺寸。
 2. 以平方呎顯示之面積均依據1平方米=10.764平方呎換算，並四捨五入至整數。
1. The dimensions of floor plans are all structural dimensions in millimeter.
 2. Areas in square feet are converted at a rate of 1 square metre to 10.764 square feet and rounded to the nearest integer.

每個住宅物業 Each Residential Property	單位 Unit 樓層 Floor	B
層與層之間的高度 Floor to Floor Height (毫米 mm)	G/F	3500
	1/F	3250
樓板(不包括灰泥)的厚度 Thickness of Floor Slab (excluding plaster) (毫米 mm)	G/F	150, 175, 250, 300
	1/F	150, 225, 250

10. 期數的住宅物業的樓面平面圖

FLOOR PLANS OF RESIDENTIAL PROPERTIES IN THE PHASE

第22座3樓平面圖 BLOCK 22 — 3/F FLOOR PLAN



比例尺SCALE: 0米(M) 5米(M)

因住宅物業的較高樓層的結構牆的厚度遞減，較高樓層的內部面積，一般比較低樓層的內部面積稍大。
請參閱本售樓說明書第61頁為住宅物業樓面平面圖而設之備註及名詞及簡稱的圖例。

The internal areas of the residential properties on the upper floors will generally be slightly larger than those on the lower floors because of the reducing thickness of the structural walls on the upper floors.

Please refer to page 61 of this sales brochure for the remarks and legends of the terms and abbreviations for the floor plans of residential properties.

平台空白位置為供維修大廈設備使用的公用地方。
Blank areas on the flat roof are common areas for building facility maintenance.

備註：平面圖所列數字為以毫米標示之建築結構尺寸。
Note: The dimensions of floor plans are all structural dimensions in millimeter.

第22座5樓 - 11樓，16樓 - 20樓及23樓平面圖 BLOCK 22 — 5/F - 11/F, 16/F - 20/F & 23/F FLOOR PLAN



比例尺SCALE: 0米(M) 5米(M)

因住宅物業的較高樓層的結構牆的厚度遞減，較高樓層的內部面積，一般比較低樓層的內部面積稍大。
請參閱本售樓說明書第61頁為住宅物業樓面平面圖而設之備註及名詞及簡稱的圖例。

The internal areas of the residential properties on the upper floors will generally be slightly larger than those on the lower floors because of the reducing thickness of the structural walls on the upper floors.

Please refer to page 61 of this sales brochure for the remarks and legends of the terms and abbreviations for the floor plans of residential properties.

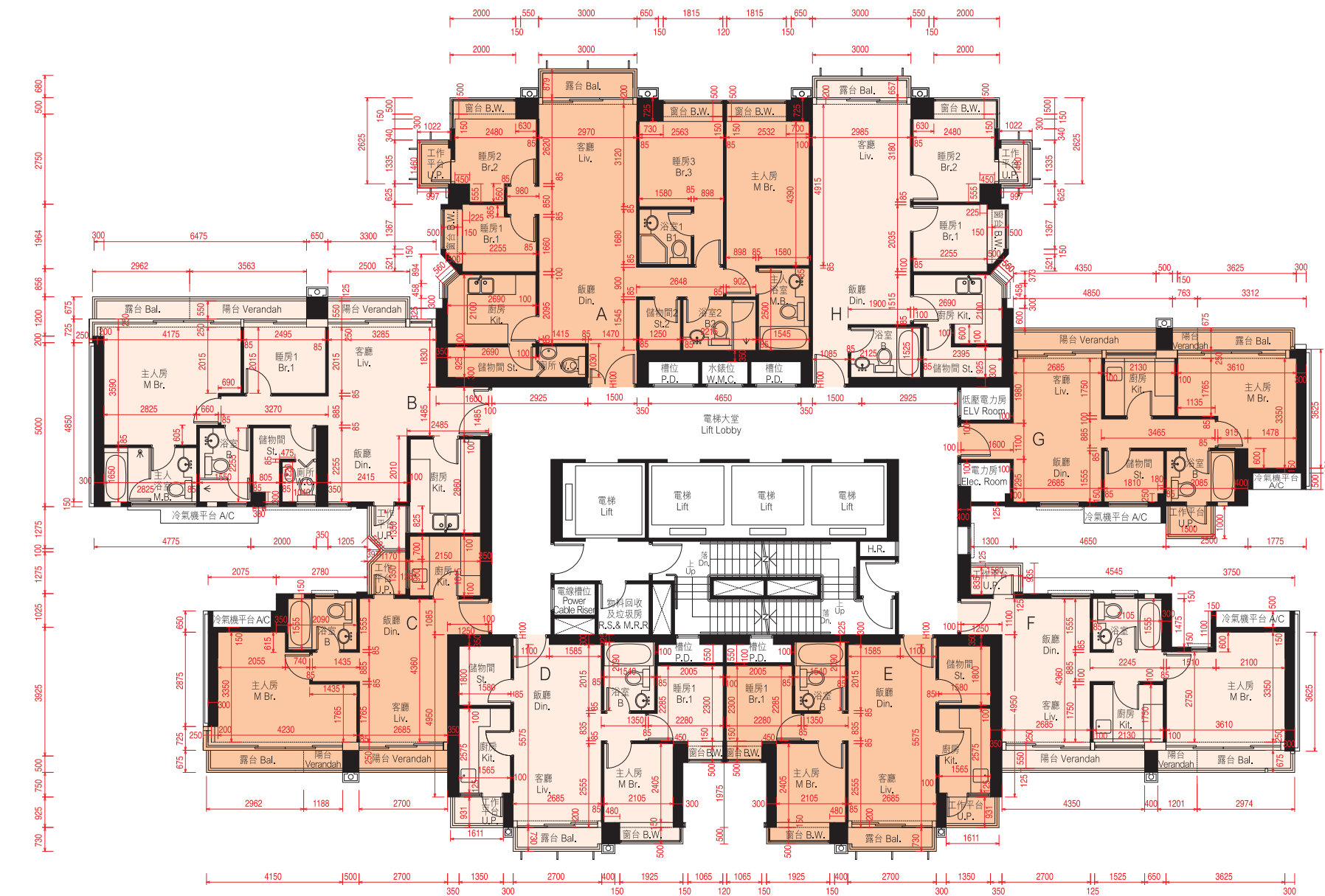
備註：平面圖所列數字為以毫米標示之建築結構尺寸。
Note: The dimensions of floor plans are all structural dimensions in millimeter.

每個住宅物業 Each Residential Property	單位 Unit	A	B	C	D	E	F	G	H
層與層之間的高度 Floor to Floor Height (毫米 mm)	3/F	2800, 3150	2950, 3150	3150	2800, 2950, 3150	2800, 2950, 3150	3150	2950, 3150	2800, 3150
樓板(不包括灰泥)的厚度 Thickness of Floor Slab (excluding plaster) (毫米 mm)	3/F	150, 200, 225	150, 175, 200	150, 200	150, 200	150, 200	150, 200	150, 200	150, 200, 225

樓層 Floor	單位 Unit	A	B	C	D	E	F	G	H
層與層之間的高度 Floor to Floor Height (毫米 mm)	5/F - 10/F, 16/F - 19/F	3150	3150	3150	3150	3150	3150	3150	3150
	11/F & 20/F	2800, 3150	3150	3150	3150	3150	2950, 3150	2950, 3150	3150
	23/F	3300	3250, 3300	2950, 3300	3300	3300	3300	3100, 3300	3300
樓板(不包括灰泥)的厚度 Thickness of Floor Slab (excluding plaster) (毫米 mm)	5/F - 10/F, 16/F - 19/F	150, 200, 225	150, 175, 200	150, 200	150, 200	150, 200	150, 200	150, 200	150, 200, 225
	11/F & 20/F	150, 200, 225	150, 175	150, 200	150, 200	150, 200	150, 200	150, 200	150, 200, 225
	23/F	150, 200, 225	150, 175, 200	150, 200	150, 200	150, 200	150, 200	150, 200	150, 200, 225

10. 期數的住宅物業的樓面平面圖 FLOOR PLANS OF RESIDENTIAL PROPERTIES IN THE PHASE

第22座12樓及21樓平面圖 BLOCK 22 — 12/F & 21/F FLOOR PLAN



比例尺SCALE: 0米(M) 5米(M)

因住宅物業的較高樓層的結構牆的厚度遞減，較高樓層的內部面積，一般比較低樓層的內部面積稍大。
請參閱本售樓說明書第61頁為住宅物業樓面平面圖而設之備註及名詞及簡稱的圖例。

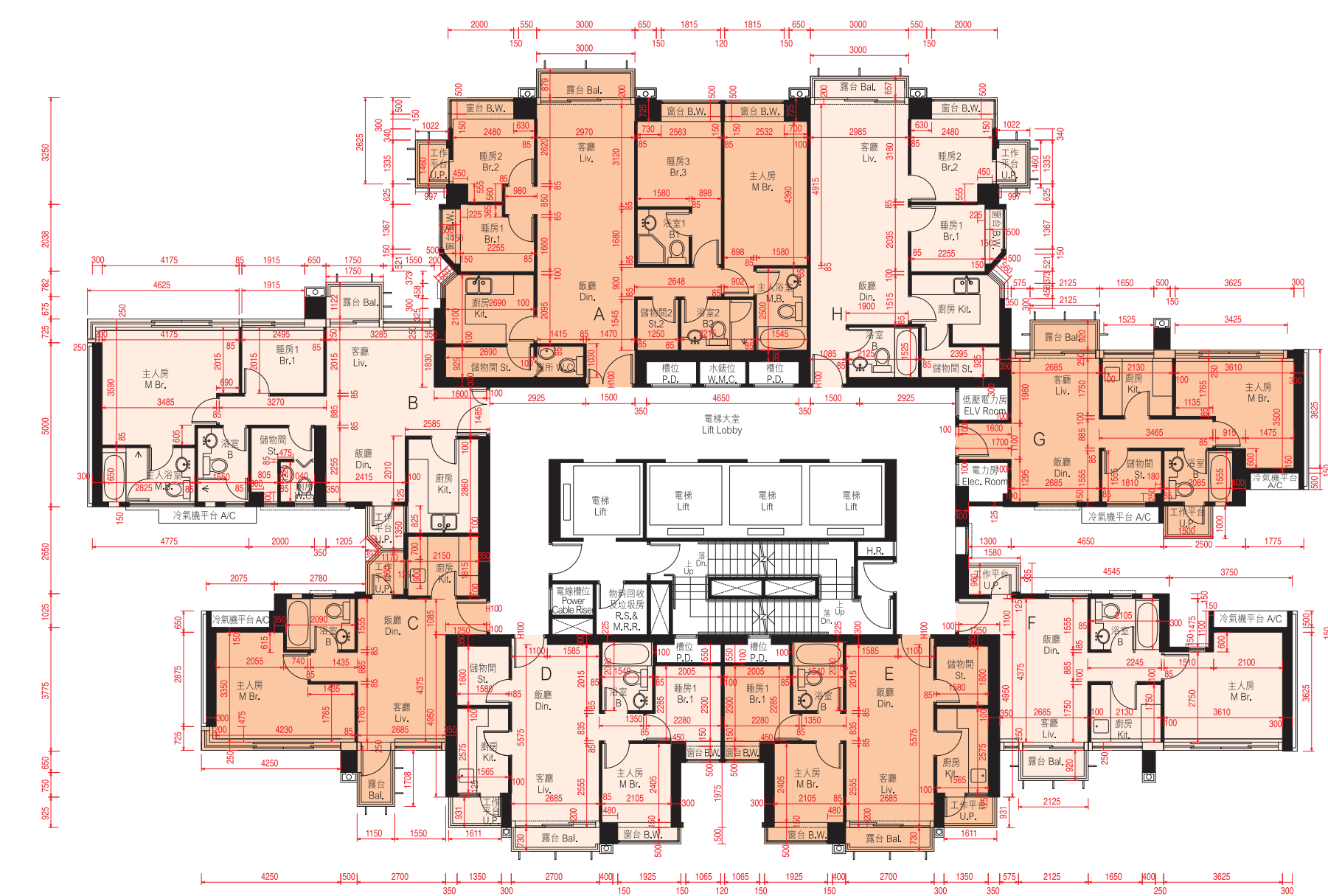
The internal areas of the residential properties on the upper floors will generally be slightly larger than those on the lower floors because of the reducing thickness of the structural walls on the upper floors.

Please refer to page 61 of this sales brochure for the remarks and legends of the terms and abbreviations for the floor plans of residential properties.

備註：平面圖所列數字為以毫米標示之建築結構尺寸。
Note: The dimensions of floor plans are all structural dimensions in millimeter.

每個住宅物業 Each Residential Property	單位 Unit	A	B	C	D	E	F	G	H
層與層之間的高度 Floor to Floor Height (毫米 mm)	12/F & 21/F	3150	3150	3150	3150	3150	3150	3150	3150
樓板(不包括灰泥)的厚度 Thickness of Floor Slab (excluding plaster) (毫米 mm)	12/F & 21/F	150, 200, 225	150, 175, 200	150, 200	150, 200	150, 200	150, 200	150, 200	150, 200, 225

第22座15樓及22樓平面圖 BLOCK 22 — 15/F & 22/F FLOOR PLAN



比例尺SCALE: 0米(M) 5米(M)

因住宅物業的較高樓層的結構牆的厚度遞減，較高樓層的內部面積，一般比較低樓層的內部面積稍大。
請參閱本售樓說明書第61頁為住宅物業樓面平面圖而設之備註及名詞及簡稱的圖例。

The internal areas of the residential properties on the upper floors will generally be slightly larger than those on the lower floors because of the reducing thickness of the structural walls on the upper floors.

Please refer to page 61 of this sales brochure for the remarks and legends of the terms and abbreviations for the floor plans of residential properties.

備註：平面圖所列數字為以毫米標示之建築結構尺寸。
Note: The dimensions of floor plans are all structural dimensions in millimeter.

每個住宅物業 Each Residential Property	單位 Unit	A	B	C	D	E	F	G	H
層與層之間的高度 Floor to Floor Height (毫米 mm)	15/F & 22/F	2800, 3150	3100, 3150	3150	3100, 3150	3100, 3150	3100, 3150	3100, 3150	3150
樓板(不包括灰泥)的厚度 Thickness of Floor Slab (excluding plaster) (毫米 mm)	15/F & 22/F	150, 200, 225	150, 175, 200	150, 200	150, 200	150, 200	150, 200	150, 200	150, 200, 225

10. 期數的住宅物業的樓面平面圖 FLOOR PLANS OF RESIDENTIAL PROPERTIES IN THE PHASE

第22座25樓平面圖 BLOCK 22 — 25/F FLOOR PLAN



比例尺SCALE: 0米(M) 5米(M)

因住宅物業的較高樓層的結構牆的厚度遞減，較高樓層的內部面積，一般比較低樓層的內部面積稍大。
請參閱本售樓說明書第61頁為住宅物業樓面平面圖而設之備註及名詞及簡稱的圖例。

The internal areas of the residential properties on the upper floors will generally be slightly larger than those on the lower floors because of the reducing thickness of the structural walls on the upper floors.

Please refer to page 61 of this sales brochure for the remarks and legends of the terms and abbreviations for the floor plans of residential properties.

備註：平面圖所列數字為以毫米標示之建築結構尺寸。
Note: The dimensions of floor plans are all structural dimensions in millimeter.

第22座26樓平面圖 BLOCK 22 — 26/F FLOOR PLAN



比例尺SCALE: 0米(M) 5米(M)

因住宅物業的較高樓層的結構牆的厚度遞減，較高樓層的內部面積，一般比較低樓層的內部面積稍大。
請參閱本售樓說明書第61頁為住宅物業樓面平面圖而設之備註及名詞及簡稱的圖例。

The internal areas of the residential properties on the upper floors will generally be slightly larger than those on the lower floors because of the reducing thickness of the structural walls on the upper floors.

Please refer to page 61 of this sales brochure for the remarks and legends of the terms and abbreviations for the floor plans of residential properties.

備註：平面圖所列數字為以毫米標示之建築結構尺寸。
Note: The dimensions of floor plans are all structural dimensions in millimeter.

每個住宅物業 Each Residential Property	單位 Unit	A	B	C	D	E	F	G
層與層之間的高度 Floor to Floor Height (毫米 mm)	25/F	2950, 3000, 3100, 3300	3300	2950, 3300	3300	3300	3300	3300
樓板(不包括灰泥)的厚度 Thickness of Floor Slab (excluding plaster) (毫米 mm)	25/F	150, 200, 225	150, 175, 200	150, 200	150, 200	150, 200	150, 200	150, 200

每個住宅物業 Each Residential Property	單位 Unit	A	B	C	D	E	F	G
層與層之間的高度 Floor to Floor Height (毫米 mm)	26/F	3150	3150	3150	3150	3150	3150	3150
樓板(不包括灰泥)的厚度 Thickness of Floor Slab (excluding plaster) (毫米 mm)	26/F	200, 225, 275	150, 175, 200	150, 200	150, 200	150, 200	150, 200	150, 200

10. 期數的住宅物業的樓面平面圖 FLOOR PLANS OF RESIDENTIAL PROPERTIES IN THE PHASE

第22座27樓-28樓及31樓-33樓平面圖 BLOCK 22 — 27/F - 28/F & 31/F - 33/F FLOOR PLAN



比例尺SCALE: 0米(M) 5米(M)

因住宅物業的較高樓層的結構牆的厚度遞減，較高樓層的內部面積，一般比較低樓層的內部面積稍大。
請參閱本售樓說明書第61頁為住宅物業樓面平面圖而設之備註及名詞及簡稱的圖例。

The internal areas of the residential properties on the upper floors will generally be slightly larger than those on the lower floors because of the reducing thickness of the structural walls on the upper floors.

Please refer to page 61 of this sales brochure for the remarks and legends of the terms and abbreviations for the floor plans of residential properties.

備註：平面圖所列數字為以毫米標示之建築結構尺寸。
Note: The dimensions of floor plans are all structural dimensions in millimeter.

每個住宅物業 Each Residential Property	單位 Unit	A	B	C	D	E	F	G
層與層之間的高度 Floor to Floor Height (毫米 mm)	27/F, 31/F - 32/F	3150	3150	3150	3150	3150	3150	3150
	28/F & 33/F	3150	3150	3150	3150	3150	2950, 3150	2950, 3150
樓板(不包括灰泥)的厚度 Thickness of Floor Slab (excluding plaster) (毫米 mm)	27/F, 31/F - 32/F	200, 225, 275	150, 175, 200	150, 200	150, 200	150, 200	150, 200	150, 200
	28/F & 33/F	200, 225, 275	150, 175	150, 200	150, 200	150, 200	150, 200	150, 200

第22座29樓平面圖 BLOCK 22 — 29/F FLOOR PLAN



比例尺SCALE: 0米(M) 5米(M)

因住宅物業的較高樓層的結構牆的厚度遞減，較高樓層的內部面積，一般比較低樓層的內部面積稍大。
請參閱本售樓說明書第61頁為住宅物業樓面平面圖而設之備註及名詞及簡稱的圖例。

The internal areas of the residential properties on the upper floors will generally be slightly larger than those on the lower floors because of the reducing thickness of the structural walls on the upper floors.

Please refer to page 61 of this sales brochure for the remarks and legends of the terms and abbreviations for the floor plans of residential properties.

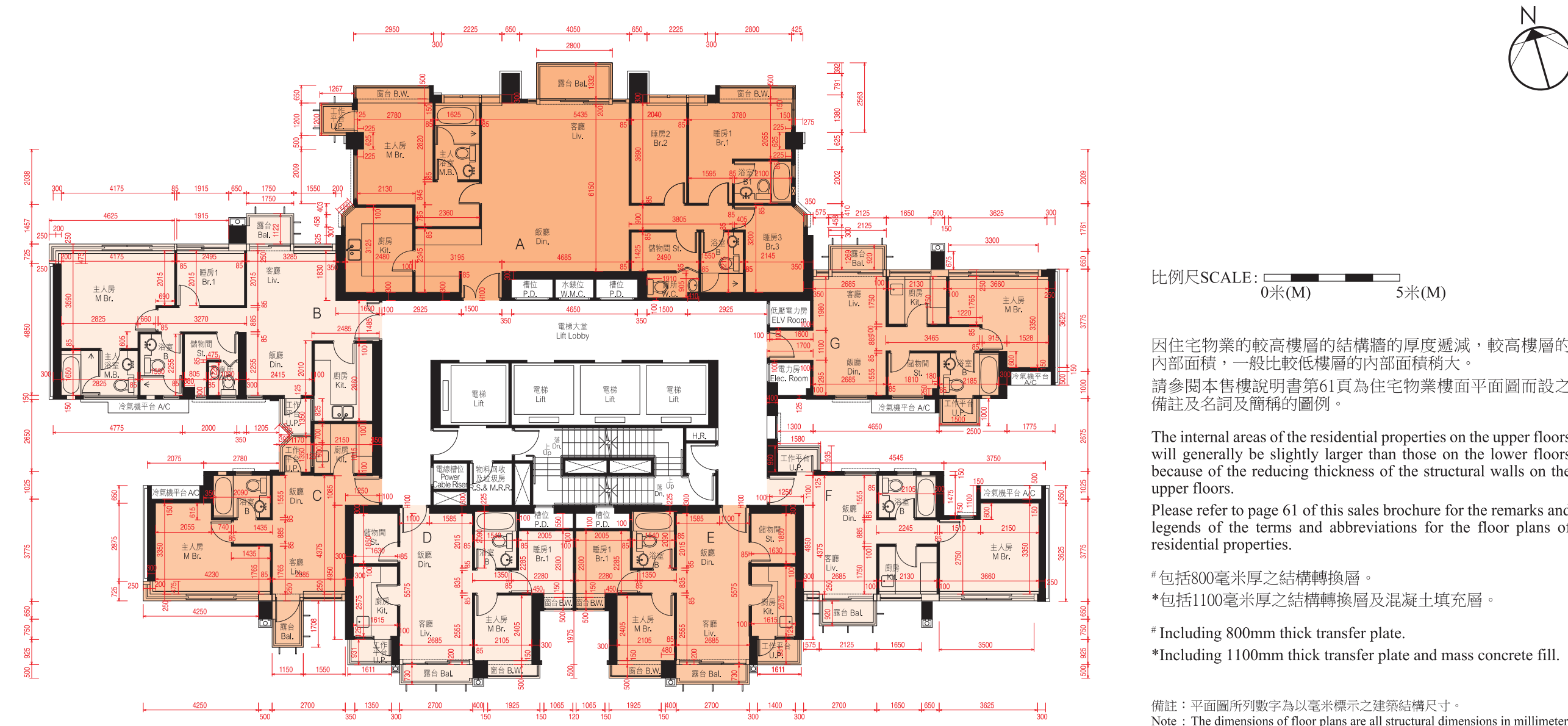
備註：平面圖所列數字為以毫米標示之建築結構尺寸。
Note: The dimensions of floor plans are all structural dimensions in millimeter.

每個住宅物業 Each Residential Property	單位 Unit	A	B	C	D	E	F	G
層與層之間的高度 Floor to Floor Height (毫米 mm)	29/F	3150	3150	3150	3150	3150	3150	3150
樓板(不包括灰泥)的厚度 Thickness of Floor Slab (excluding plaster) (毫米 mm)	29/F	200, 225, 275	150, 175, 225	150, 300	150, 200	150, 200	150, 200	150, 200

10. 期數的住宅物業的樓面平面圖

FLOOR PLANS OF RESIDENTIAL PROPERTIES IN THE PHASE

第22座30樓及36樓平面圖 BLOCK 22 — 30/F & 36/F FLOOR PLAN



比例尺SCALE: 0米(M) 5米(M)

因住宅物業的較高樓層的結構牆的厚度遞減，較高樓層的內部面積，一般比較低樓層的內部面積稍大。
請參閱本售樓說明書第61頁為住宅物業樓面平面圖而設之備註及名詞及簡稱的圖例。

The internal areas of the residential properties on the upper floors will generally be slightly larger than those on the lower floors because of the reducing thickness of the structural walls on the upper floors.

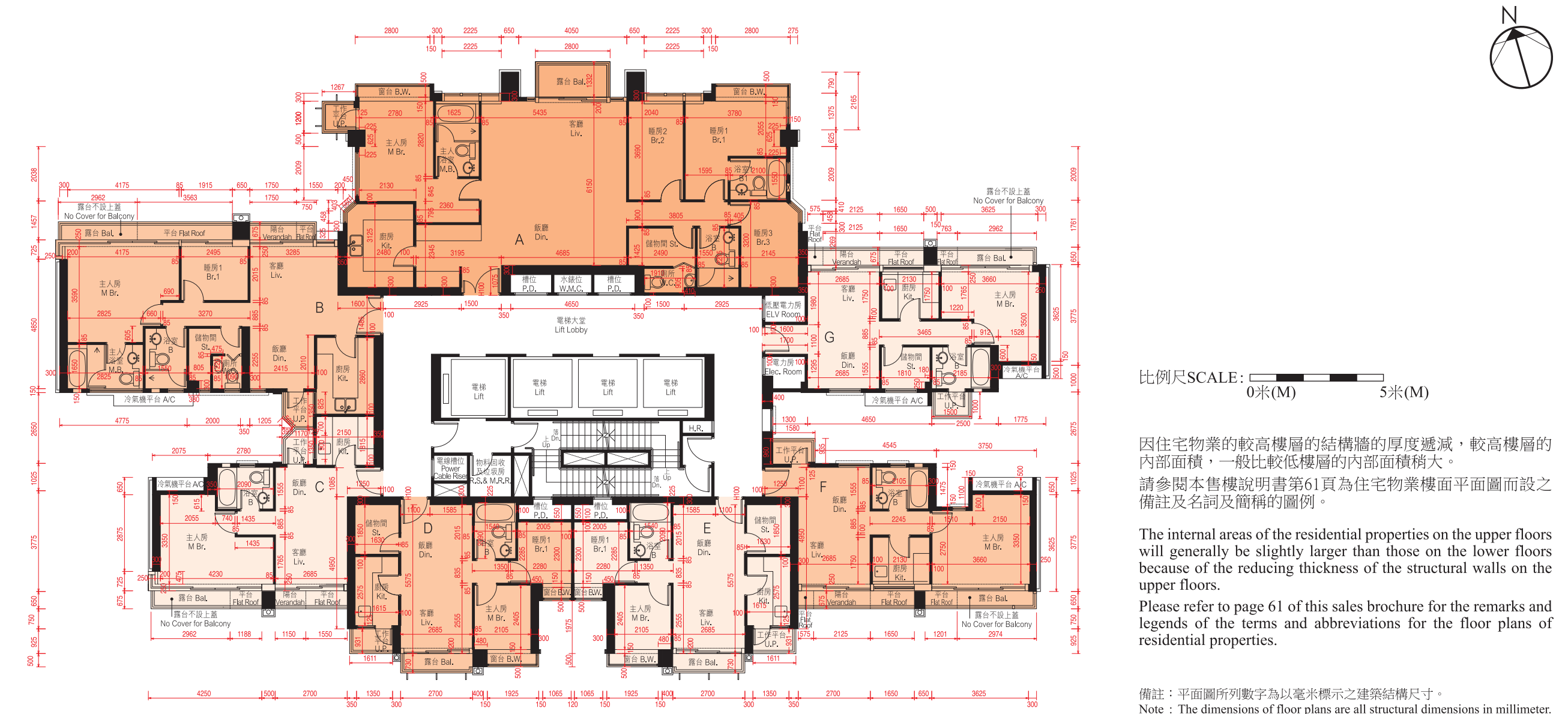
Please refer to page 61 of this sales brochure for the remarks and legends of the terms and abbreviations for the floor plans of residential properties.

- # 包括800毫米厚之結構轉換層。
- * 包括1100毫米厚之結構轉換層及混凝土填充層。
- # Including 800mm thick transfer plate.
- * Including 1100mm thick transfer plate and mass concrete fill.

備註：平面圖所列數字為以毫米標示之建築結構尺寸。
Note: The dimensions of floor plans are all structural dimensions in millimeter.

每個住宅物業 Each Residential Property	單位 Unit	A	B	C	D	E	F	G
層與層之間的高度 Floor to Floor Height (毫米 mm)	30/F	3150	3150	3150	3150	3150	3150	3150
	36/F	3900#, 4200*	3350, 3500, 3900#, 4200*	3500, 3900#, 4200*	3900#, 4200*	3900#, 4200*	3500, 3900#, 4200*	3500, 3900#, 4200*
樓板(不包括灰泥)的厚度 Thickness of Floor Slab (excluding plaster) (毫米 mm)	30/F	200, 225, 275	150, 175, 200	150, 200	150, 200	150, 200	150, 200	150, 200
	36/F	200, 225, 800, 1100	150, 225, 250, 800, 1100	150, 200, 250, 300, 800, 1100	200, 800, 1100	200, 800, 1100	150, 200, 250, 800, 1100	150, 200, 800, 1100

第22座35樓平面圖 BLOCK 22 — 35/F FLOOR PLAN



比例尺SCALE: 0米(M) 5米(M)

因住宅物業的較高樓層的結構牆的厚度遞減，較高樓層的內部面積，一般比較低樓層的內部面積稍大。
請參閱本售樓說明書第61頁為住宅物業樓面平面圖而設之備註及名詞及簡稱的圖例。

The internal areas of the residential properties on the upper floors will generally be slightly larger than those on the lower floors because of the reducing thickness of the structural walls on the upper floors.

Please refer to page 61 of this sales brochure for the remarks and legends of the terms and abbreviations for the floor plans of residential properties.

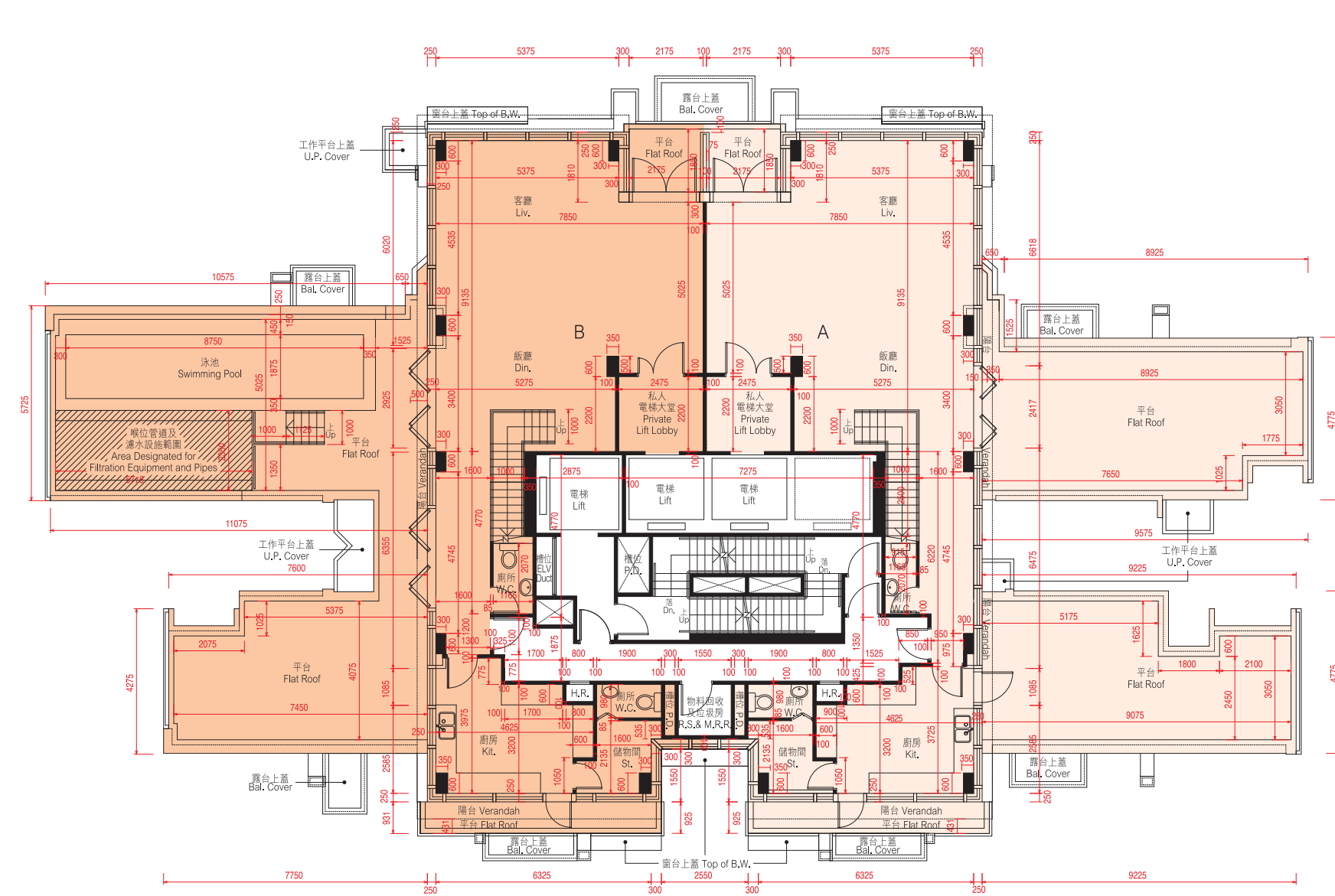
備註：平面圖所列數字為以毫米標示之建築結構尺寸。
Note: The dimensions of floor plans are all structural dimensions in millimeter.

每個住宅物業 Each Residential Property	單位 Unit	A	B	C	D	E	F	G
層與層之間的高度 Floor to Floor Height (毫米 mm)	35/F	3150	3150	3150	3150	3150	3150	3150
樓板(不包括灰泥)的厚度 Thickness of Floor Slab (excluding plaster) (毫米 mm)	35/F	200, 225, 275	150, 175, 200	150, 300	150, 200	150, 200	150, 200	150, 200

10. 期數的住宅物業的樓面平面圖

FLOOR PLANS OF RESIDENTIAL PROPERTIES IN THE PHASE

第22座37樓平面圖(複式低層) BLOCK 22 — 37/F FLOOR PLAN (LOWER DUPLEX)



比例尺SCALE: 0米(M) 5米(M)

備註 Note :

1. 平面圖所列數字為以毫米標示之建築結構尺寸。
2. 以平方呎顯示之面積均依據1平方米=10.764平方呎換算，並四捨五入至整數。

1. The dimensions of floor plans are all structural dimensions in millimeter.
2. Areas in square feet are converted at a rate of 1 square metre to 10.764 square feet and rounded to the nearest integer.

註釋 Explanatory Note :

已預留作喉位管道及濾水設施之沒有遮蓋的面積(已計算入平台面積)：37樓B單位為13.571平方米(146平方呎)。因住宅物業的較高樓層的結構牆的厚度遞減，較高樓層的內部面積，一般比較低樓層的內部面積稍大。請參閱本售樓說明書第61頁為住宅物業樓面平面圖而設之備註及名詞及簡稱的圖例。

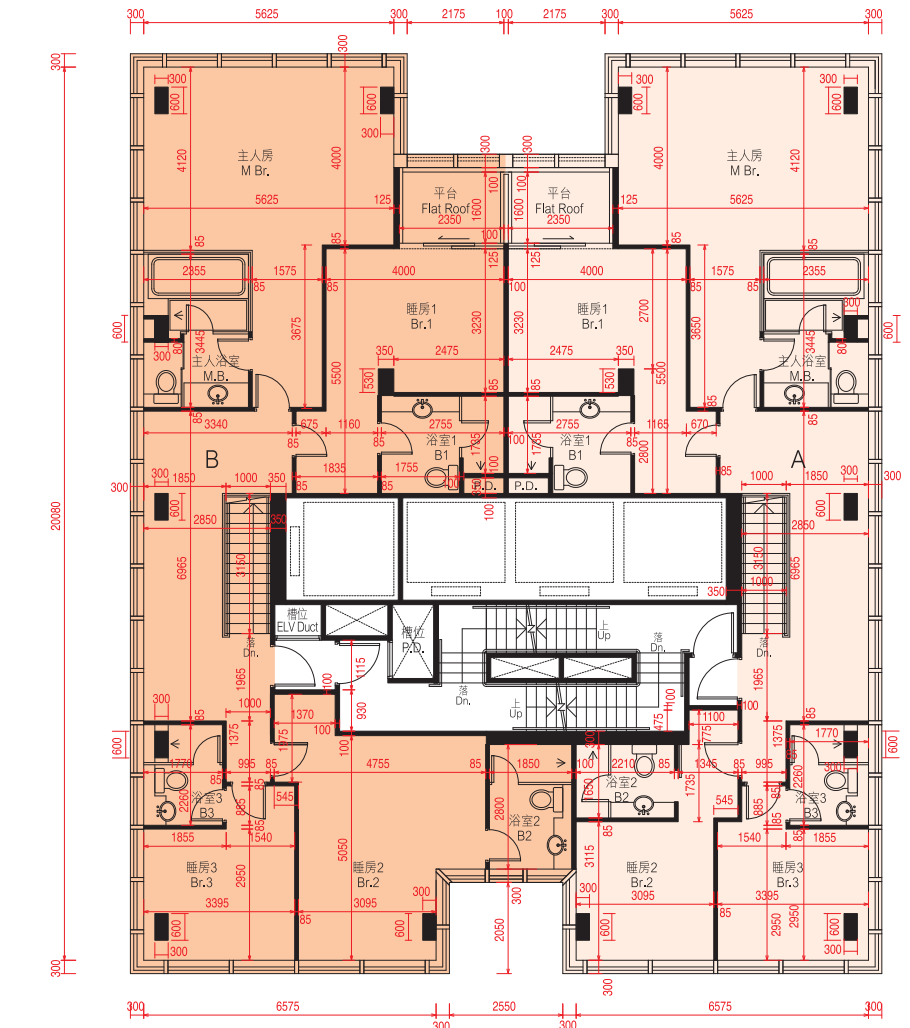
Uncovered area designated for filtration equipment and pipes (included in the area of flat roof): Flat B on 37/F is 13.571 sq.m. (146 sq.ft.).

The internal areas of the residential properties on the upper floors will generally be slightly larger than those on the lower floors because of the reducing thickness of the structural walls on the upper floors.

Please refer to page 61 of this sales brochure for the remarks and legends of the terms and abbreviations for the floor plans of residential properties.

每個住宅物業 Each Residential Property	單位 Unit 樓層 Floor	A	B
層與層之間的高度 Floor to Floor Height (毫米 mm)	37/F	3340, 3500	3340, 3500
樓板(不包括灰泥)的厚度 Thickness of Floor Slab (excluding plaster) (毫米 mm)	37/F	140, 300	140, 300

第22座38樓平面圖(複式高層) BLOCK 22 — 38/F FLOOR PLAN (UPPER DUPLEX)



比例尺SCALE: 0米(M) 5米(M)

因住宅物業的較高樓層的結構牆的厚度遞減，較高樓層的內部面積，一般比較低樓層的內部面積稍大。請參閱本售樓說明書第61頁為住宅物業樓面平面圖而設之備註及名詞及簡稱的圖例。

The internal areas of the residential properties on the upper floors will generally be slightly larger than those on the lower floors because of the reducing thickness of the structural walls on the upper floors.

Please refer to page 61 of this sales brochure for the remarks and legends of the terms and abbreviations for the floor plans of residential properties.

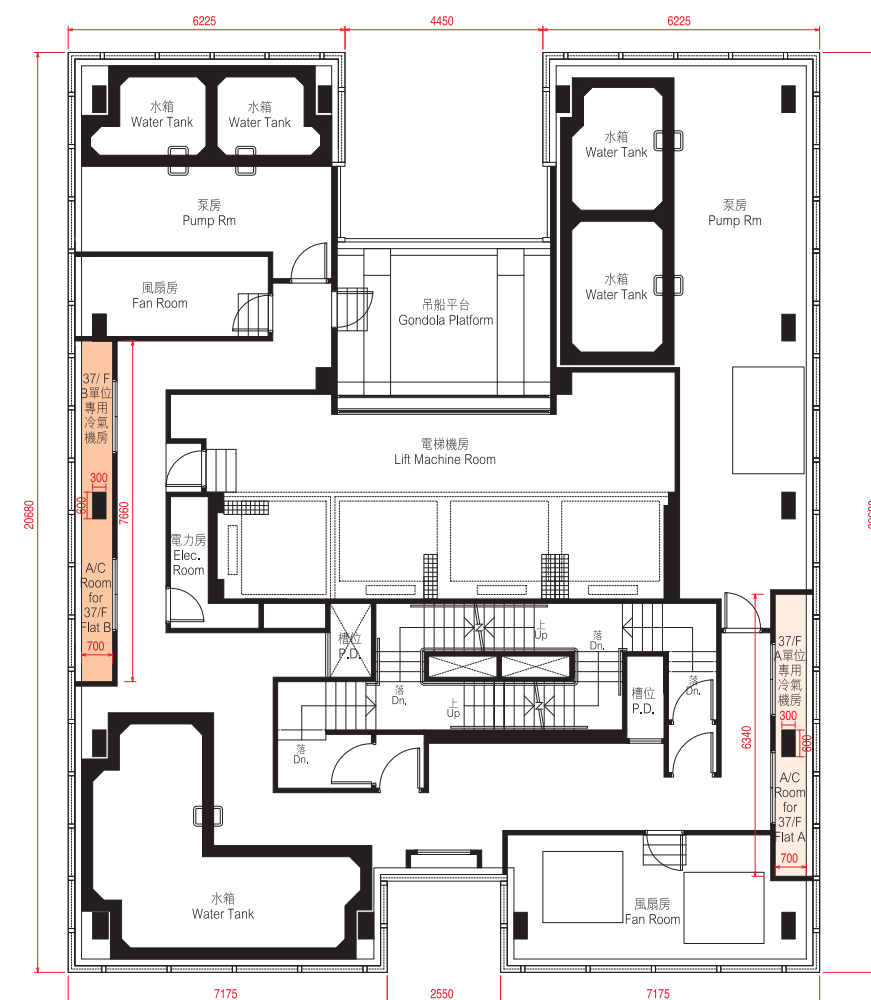
備註：平面圖所列數字為以毫米標示之建築結構尺寸。
Note: The dimensions of floor plans are all structural dimensions in millimeter.

每個住宅物業 Each Residential Property	單位 Unit 樓層 Floor	A	B
層與層之間的高度 Floor to Floor Height (毫米 mm)	38/F	3250, 3500	3250, 3500
樓板(不包括灰泥)的厚度 Thickness of Floor Slab (excluding plaster) (毫米 mm)	38/F	150, 200	150, 200

10. 期數的住宅物業的樓面平面圖

FLOOR PLANS OF RESIDENTIAL PROPERTIES IN THE PHASE

第22座機電樓層平面圖 BLOCK 22 — ELECTRICAL & MECHANICAL FLOOR PLAN



比例尺SCALE: 0米(M) 5米(M)

每個住宅單位的層與層之間的高度：不適用。
 每個住宅單位的樓板(不包括灰泥)的厚度：不適用。
 因住宅物業的較高樓層的結構牆的厚度遞減，較高樓層的內部面積，一般比較低樓層的內部面積稍大。
 請參閱本售樓說明書第61頁為住宅物業樓面平面圖而設之備註及名詞及簡稱的圖例。

The floor-to-floor height of each residential property : Not applicable.
 The thickness of the floor slabs (excluding plaster) of each residential property : Not applicable.
 The internal areas of the residential properties on the upper floors will generally be slightly larger than those on the lower floors because of the reducing thickness of the structural walls on the upper floors.
 Please refer to page 61 of this sales brochure for the remarks and legends of the terms and abbreviations for the floor plans of residential properties.

備註：平面圖所列數字為以毫米標示之建築結構尺寸。
 Note : The dimensions of floor plans are all structural dimensions in millimeter.

名詞及簡稱之圖例 LEGENDS OF THE TERMS AND ABBREVIATIONS

A/C	=	冷氣機平台 Air-conditioning platform
B	=	浴室 Bathroom
B.W.	=	窗台 Bay window
Bal.	=	露台 Balcony
Bal. Cover	=	下層露台上蓋 Top of balcony cover
Br.	=	睡房 Bedroom
Din.	=	飯廳 Dining room
Dn.	=	落 Down
Elec. Room	=	電力房 Electricity room
ELV Duct	=	超低壓電線槽位 Extra-low voltage electricity duct
ELV Room	=	超低壓電力房 Extra-low voltage electricity room
F.R.	=	平台 Flat roof
H.R.	=	喉轆 Hose reel
Kit.	=	廚房 Kitchen
Liv.	=	客廳 Living room

Logistic Rm.	=	物流房 Logistic room
M.B.	=	主人房浴室 Master bathroom
M.Br.	=	主人房 Master bedroom
P.D.	=	管道槽位 Pipe duct
Riser Duct	=	電線槽位 Riser duct
R.S. & M.R.R.	=	垃圾及物料回收房 Refuse storage & material recovery room
St.	=	儲物間 Store
Switch Rm	=	電掣房 Switch room
TBE Room	=	電話機房 Telecommunications & broadcasting room
Top of B.W.	=	下層窗台頂 Top of bay window
U.P.	=	工作平台 Utility platform
U.P. Cover	=	下層工作平台上蓋 Top of utility platform cover
Ver.	=	陽台 Verandah
W.C.	=	廁所 Washing chamber
W.M.C.	=	水錶位 Water meter cabinet

住宅物業的平面圖的備註:

1. 部分住宅單位的露台、陽台、工作平台、平台或外牆或設有外露之公用喉管，或外牆裝飾板內藏之公用喉管。
2. 部分住宅單位內之部分天花或有跌級樓板，用以安裝上層之機電設備或配合上層之結構、建築設計及/或裝修設計上的需要。
3. 部分住宅單位內或設有假陣或假天花用以安裝冷氣喉管及/或其他機電設備。

Remarks for the Floor Plans of Residential Properties:

1. Common pipes exposed or enclosed in cladding may be located at the balcony, verandah, utility platform, flat roof or external wall of some residential units.
2. There may be sunken slabs at some parts of the ceiling inside some residential units for the installation of mechanical and electrical services of the floor above or due to the structural, architectural and/or decoration design requirements of the floor above.
3. There may be ceiling bulkheads or false ceiling inside some residential units for the installation of air-conditioning conduits and/or other mechanical and electrical services.

