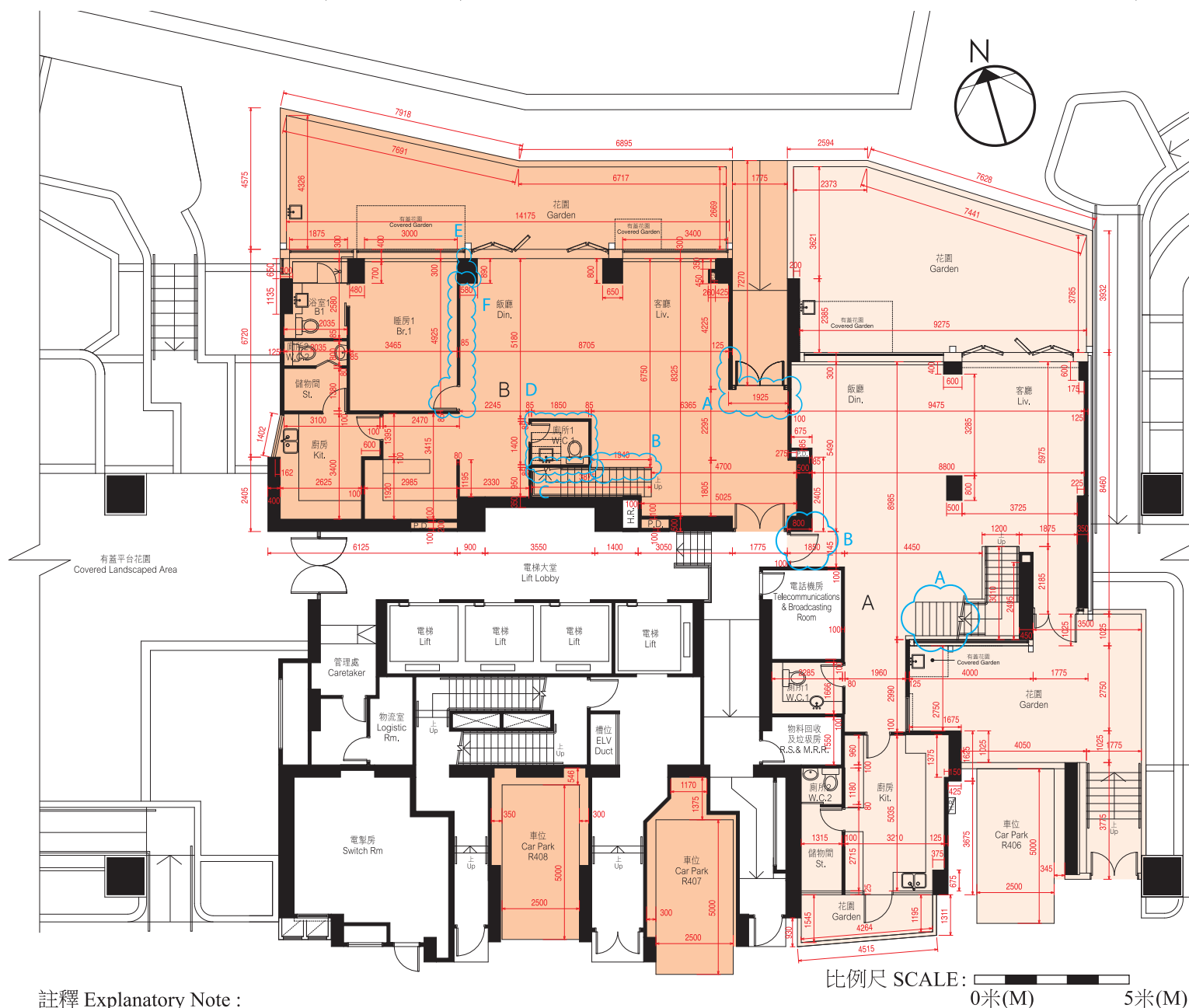


10. 期數的住宅物業的樓面平面圖 FLOOR PLANS OF RESIDENTIAL PROPERTIES IN THE PHASE

第23座地下平面圖(複式低層) BLOCK 23 — GROUND FLOOR PLAN (LOWER DUPLEX)



註釋 Explanatory Note :

貼鄰住客停車位的面積(不計算入停車位面積或實用面積): 地下A單位為1.183平方米(13平方呎), 地下B單位為6.781平方米(73平方呎)。

由工作平台或露台遮蓋之花園面積(已計算入花園面積): 地下A單位為6.399平方米(69平方呎), 地下B單位為6.205平方米(67平方呎)。根據屋宇署規定, 該面積最少兩邊不可圍封。

Area adjoining residential parking space (not included in the area of parking space or saleable area): Flat A on G/F is 1.183 sq.m. (13 sq.ft.), Flat B on G/F is 6.781 sq.m. (73 sq.ft.).

Area of garden covered by utility platform or balcony (included in the area of garden): Flat A on G/F is 6.399 sq.m. (69 sq.ft.), Flat B on G/F is 6.205 sq.m. (67 sq.ft.). Such areas shall be unenclosed on at least 2 sides as required by Buildings Department.

第23座地下及1樓A單位及B單位在發展項目落成後進行小型工程或獲《建築物條例》豁免的工程而有所改動。該等改動的大概位置已於本樓面平面圖中作標示。

Flat A and Flat B, G/F & 1/F of Block 23 have been altered by way of minor works or exempted works under the Buildings Ordinance after completion of the Development. The approximate locations of alteration are indicated on this floor plan.

第23座地下及1樓A單位的改動工程包括:

- (A) 新增間隔牆。
- (B) 改動原大門之開啟方向。

Alteration works for Flat A, G/F & 1/F of Block 23 include:

- (A) Partition walls were added.
- (B) Swing direction of the original door was changed.

第23座地下及1樓B單位的改動工程包括:

- (A) 新增間隔牆及大門。
- (B) 部分樓梯加闊。
- (C) 原樓梯的扶手被移除。
- (D) 原廁所的間隔牆被移除並以不同尺寸的間隔牆整合成儲物間。
- (E) 部分牆體加厚。
- (F) 原睡房1的間隔牆及門被移除並以不同尺寸的玻璃間隔牆及趟門取代。

Alteration works for Flat B, G/F & 1/F of Block 23 include:

- (A) Partition wall and door were added.
- (B) Some of the stairs were widened.
- (C) Original railing of the staircase was demolished.
- (D) Original partition walls of washing chamber were demolished and integrated into a store by partition walls in different dimensions.
- (E) Part of the wall was thickened.
- (F) Original partition walls and door of bedroom 1 were demolished and replaced by glass partition walls and sliding door in different dimensions.

因住宅物業的較高樓層的結構牆的厚度遞減, 較高樓層的內部面積, 一般比較低樓層的內部面積稍大。

請參閱本售樓說明書第77頁為住宅物業樓面平面圖而設之備註及名詞及簡稱的圖例。

The internal areas of the residential properties on the upper floors will generally be slightly larger than those on the lower floors because of the reducing thickness of the structural walls on the upper floors.

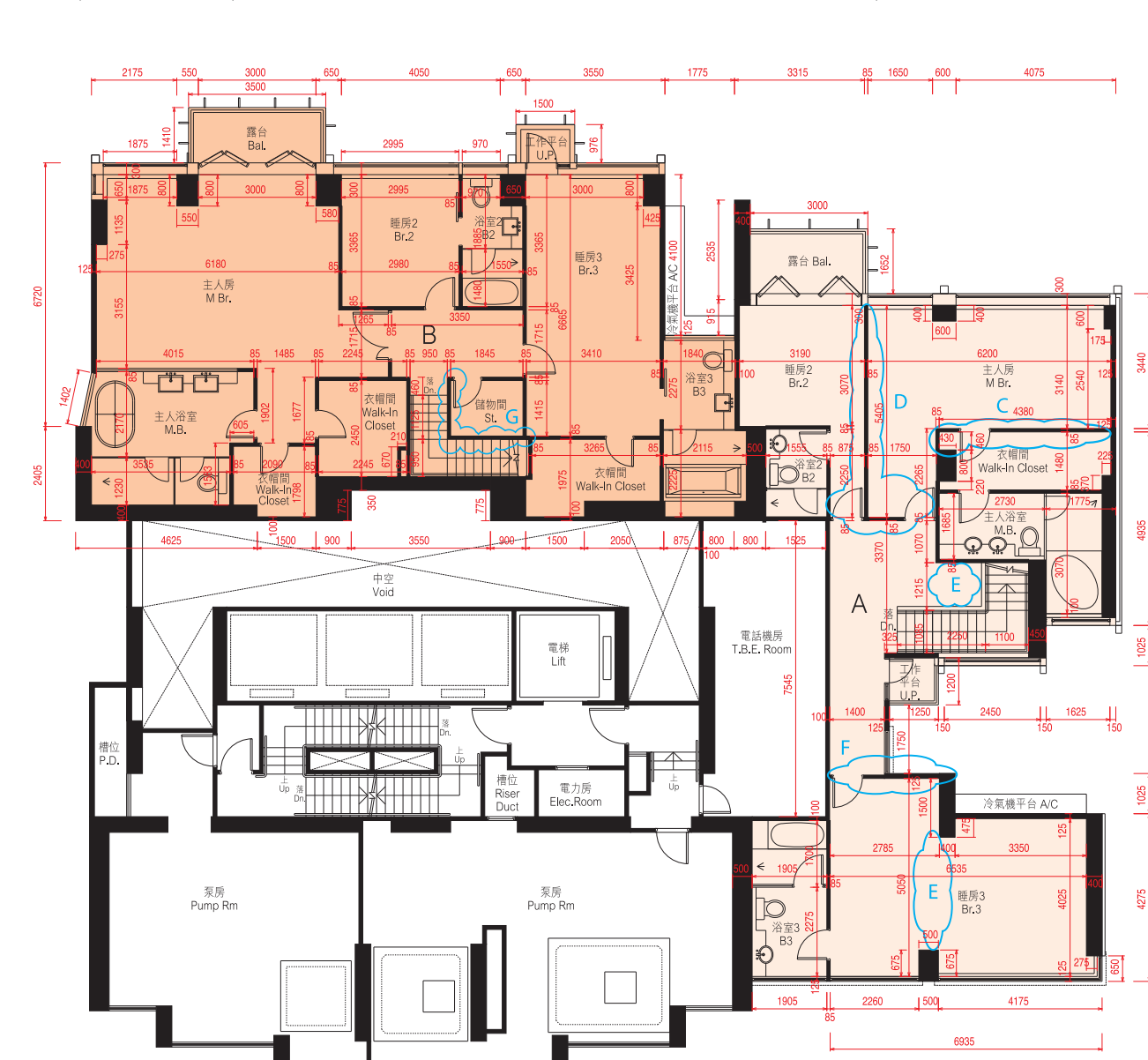
Please refer to page 77 of this sales brochure for the remarks and legends of the terms and abbreviations for the floor plans of residential properties.

備註 Note :

1. 平面圖所列數字為以毫米標示之建築結構尺寸。
 2. 以平方呎顯示之面積均依據1平方米=10.764平方呎換算, 並四捨五入至整數。
1. The dimensions of floor plans are all structural dimensions in millimeter.
2. Areas in square feet are converted at a rate of 1 square metre to 10.764 square feet and rounded to the nearest integer.

每個住宅物業 Each Residential Property	單位 Unit 樓層 Floor	A	B
層與層之間的高度 Floor to Floor Height (毫米 mm)	G/F	3500	3500
樓板(不包括灰泥)的厚度 Thickness of Floor Slab (excluding plaster) (毫米 mm)	G/F	150, 200, 300	150, 175, 200, 250, 300

第23座1樓平面圖(複式高層) BLOCK 23 — 1/F FLOOR PLAN (UPPER DUPLEX)



第23座地下及1樓A單位的改動工程包括:

- (C) 原主人房間隔牆被移除。
- (D) 原主人房及睡房2之間隔牆及房門被移除並以不同尺寸的間隔牆及門取代。
- (E) 新增間隔牆。
- (F) 原睡房3間隔牆及房門被移除並以不同尺寸的間隔牆及趟門取代。

Alteration works for Flat A, G/F & 1/F of Block 23 include:

- (C) Original partition walls of the master bedroom were demolished.
- (D) Original partition walls and doors of master bedroom and bedroom 2 were demolished and replaced by partition walls and doors in different dimensions.
- (E) Partition walls were added.
- (F) Original partition wall and door of bedroom 3 were demolished and replaced by partition wall and sliding door in different dimensions.

第23座地下及1樓B單位的改動工程包括:

- (G) 原樓梯之扶手被移除。
- Alteration works for Flat B, G/F & 1/F of Block 23 include:
(G) Original railing of the staircase was demolished.

因住宅物業的較高樓層的結構牆的厚度遞減, 較高樓層的內部面積, 一般比較低樓層的內部面積稍大。請參閱本售樓說明書第77頁為住宅物業樓面平面圖而設之備註及名詞及簡稱的圖例。

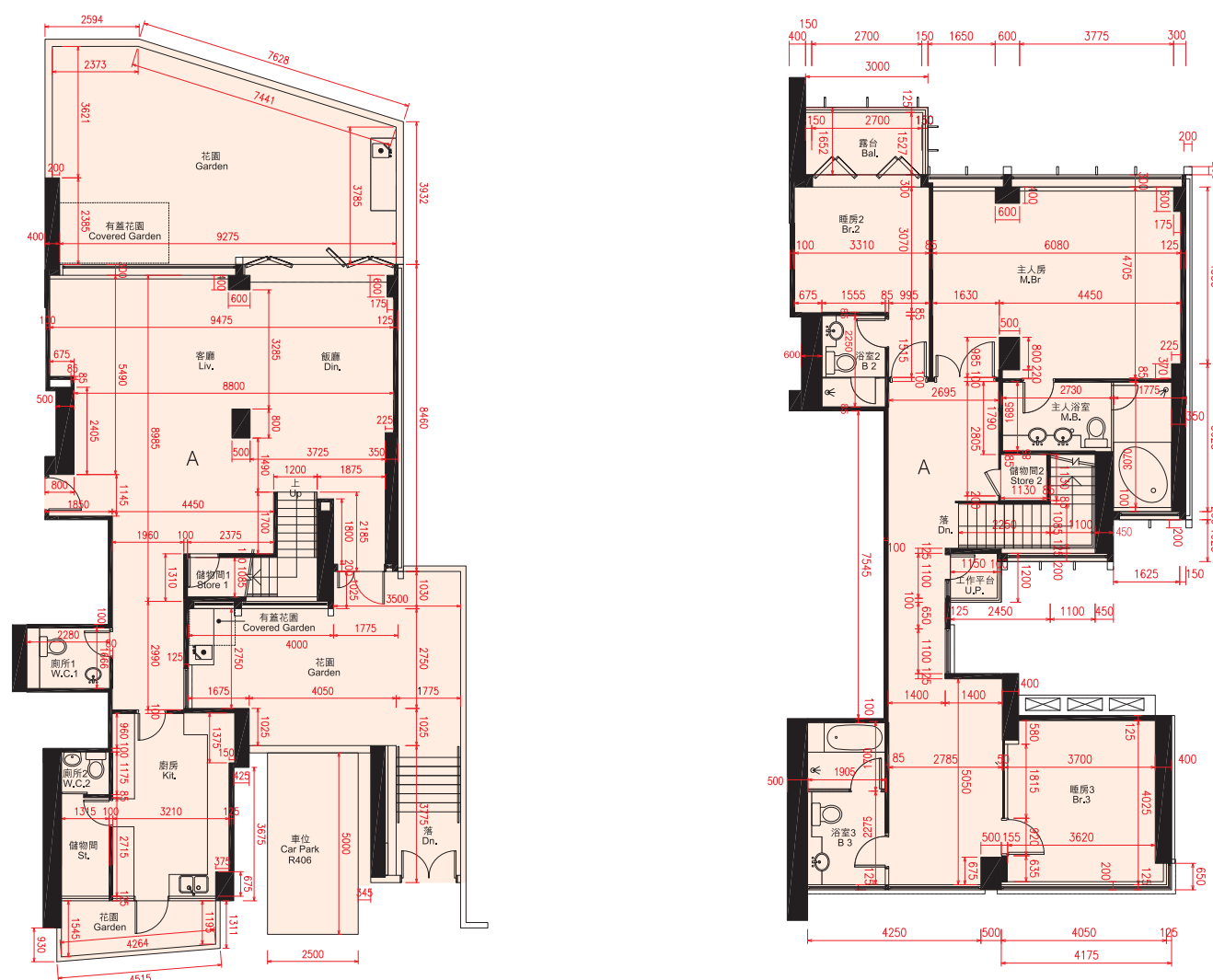
The internal areas of the residential properties on the upper floors will generally be slightly larger than those on the lower floors because of the reducing thickness of the structural walls on the upper floors.

Please refer to page 77 of this sales brochure for the remarks and legends of the terms and abbreviations for the floor plans of residential properties.

每個住宅物業 Each Residential Property	單位 Unit 樓層 Floor	A	B
層與層之間的高度 Floor to Floor Height (毫米 mm)	1/F	3250	3250
樓板(不包括灰泥)的厚度 Thickness of Floor Slab (excluding plaster) (毫米 mm)	1/F	150, 200, 250, 275, 300, 350	200, 250, 275, 300, 350

10. 期數的住宅物業的樓面平面圖 FLOOR PLANS OF RESIDENTIAL PROPERTIES IN THE PHASE

第23座地下及1樓A單位之現狀間隔平面圖 AS IS FLOOR PLAN FOR FLAT A, G/F & 1/F OF BLOCK 23



複式低層 Lower Duplex

複式高層 Upper Duplex

比例尺 SCALE: 0米(M) 5米(M)

比例尺 SCALE: 0米(M) 5米(M)

註釋 Explanatory Note :

貼鄰住客停車位的面積(不計算入停車位面積或實用面積): 地下A單位為1.183平方米(13平方呎)。
由工作平台或露台遮蓋之花園面積(已計算入花園面積): 地下A單位為6.399平方米(69平方呎)。根據屋宇署規定, 該面積最少兩邊不可圍封。
Area adjoining residential parking space (not included in the area of parking space or saleable area): Flat A on G/F is 1.183 sq.m. (13 sq.ft.).
Area of garden covered by utility platform or balcony (included in the area of garden): Flat A on G/F is 6.399 sq.m. (69 sq.ft.). Such area shall be unenclosed on at least 2 sides as required by Buildings Department.



因住宅物業的較高樓層的結構牆的厚度遞減, 較高樓層的內部面積, 一般比較低樓層的內部面積稍大。
請參閱本售樓說明書第77頁為住宅物業樓面平面圖而設之備註及名詞及簡稱的圖例。

The internal areas of the residential properties on the upper floors will generally be slightly larger than those on the lower floors because of the reducing thickness of the structural walls on the upper floors.

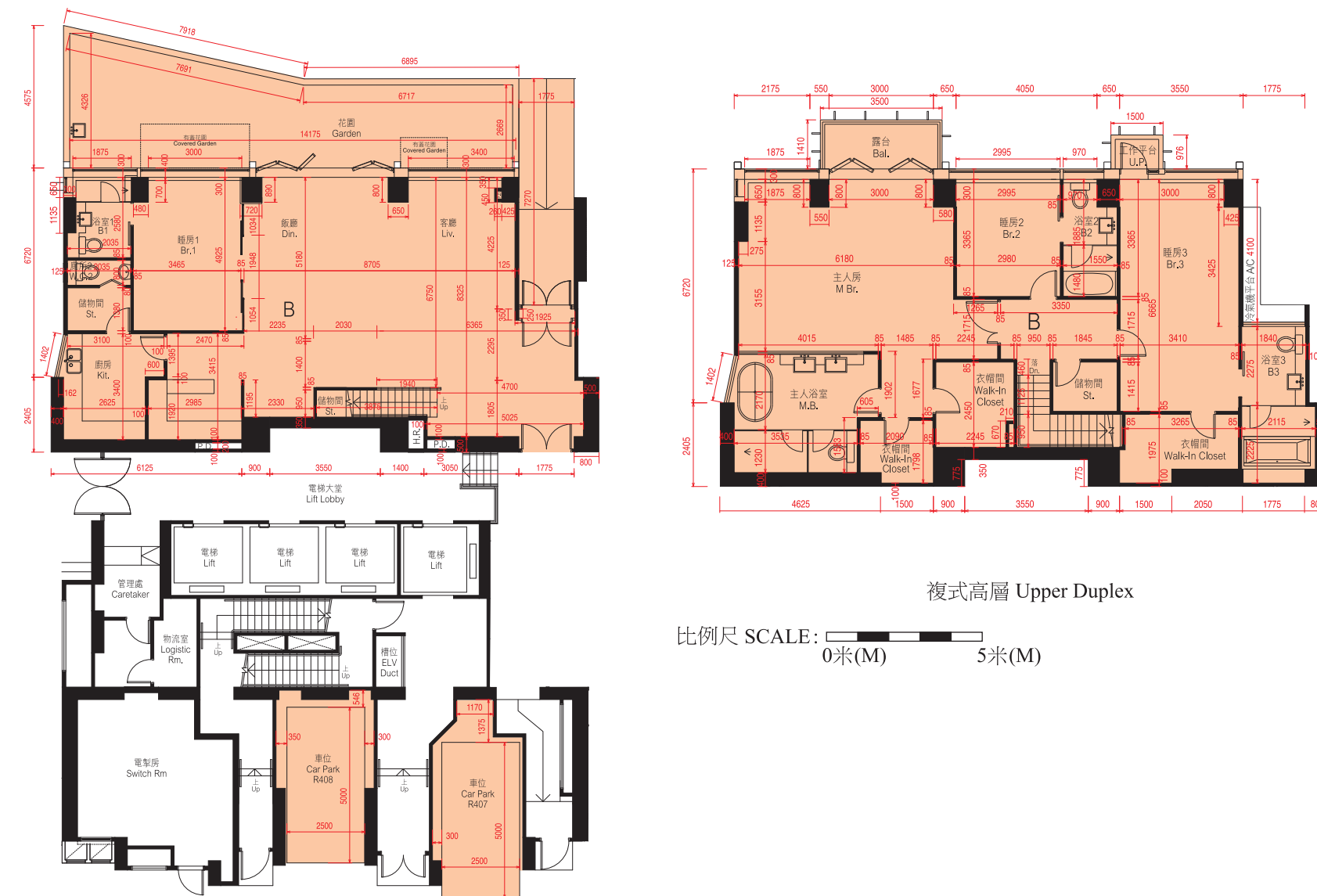
Please refer to page 77 of this sales brochure for the remarks and legends of the terms and abbreviations for the floor plans of residential properties.

備註 Note :

1. 平面圖所列數字為以毫米標示之建築結構尺寸。
2. 以平方呎顯示之面積均依據1平方米=10.764平方呎換算, 並四捨五入至整數。
1. The dimensions of floor plans are all structural dimensions in millimeter.
2. Areas in square feet are converted at a rate of 1 square metre to 10.764 square feet and rounded to the nearest integer.

每個住宅物業 Each Residential Property	單位 Unit 樓層 Floor	A
層與層之間的高度 Floor to Floor Height (毫米 mm)	G/F	3500
	1/F	3250
樓板(不包括灰泥)的厚度 Thickness of Floor Slab (excluding plaster) (毫米 mm)	G/F	150, 200, 300
	1/F	150, 200, 250, 275, 300, 350

第23座地下及1樓B單位之現狀間隔平面圖 AS IS FLOOR PLAN FOR FLAT B, G/F & 1/F OF BLOCK 23



複式高層 Upper Duplex

比例尺 SCALE: 0米(M) 5米(M)

複式低層 Lower Duplex

比例尺 SCALE: 0米(M) 5米(M)



因住宅物業的較高樓層的結構牆的厚度遞減, 較高樓層的內部面積, 一般比較低樓層的內部面積稍大。
請參閱本售樓說明書第77頁為住宅物業樓面平面圖而設之備註及名詞及簡稱的圖例。

The internal areas of the residential properties on the upper floors will generally be slightly larger than those on the lower floors because of the reducing thickness of the structural walls on the upper floors.

Please refer to page 77 of this sales brochure for the remarks and legends of the terms and abbreviations for the floor plans of residential properties.

備註 Note :

1. 平面圖所列數字為以毫米標示之建築結構尺寸。
2. 以平方呎顯示之面積均依據1平方米=10.764平方呎換算, 並四捨五入至整數。
1. The dimensions of floor plans are all structural dimensions in millimeter.
2. Areas in square feet are converted at a rate of 1 square metre to 10.764 square feet and rounded to the nearest integer.

每個住宅物業 Each Residential Property	單位 Unit 樓層 Floor	B
層與層之間的高度 Floor to Floor Height (毫米 mm)	G/F	3500
	1/F	3250
樓板(不包括灰泥)的厚度 Thickness of Floor Slab (excluding plaster) (毫米 mm)	G/F	150, 175, 200, 250, 300
	1/F	200, 250, 275, 300, 350

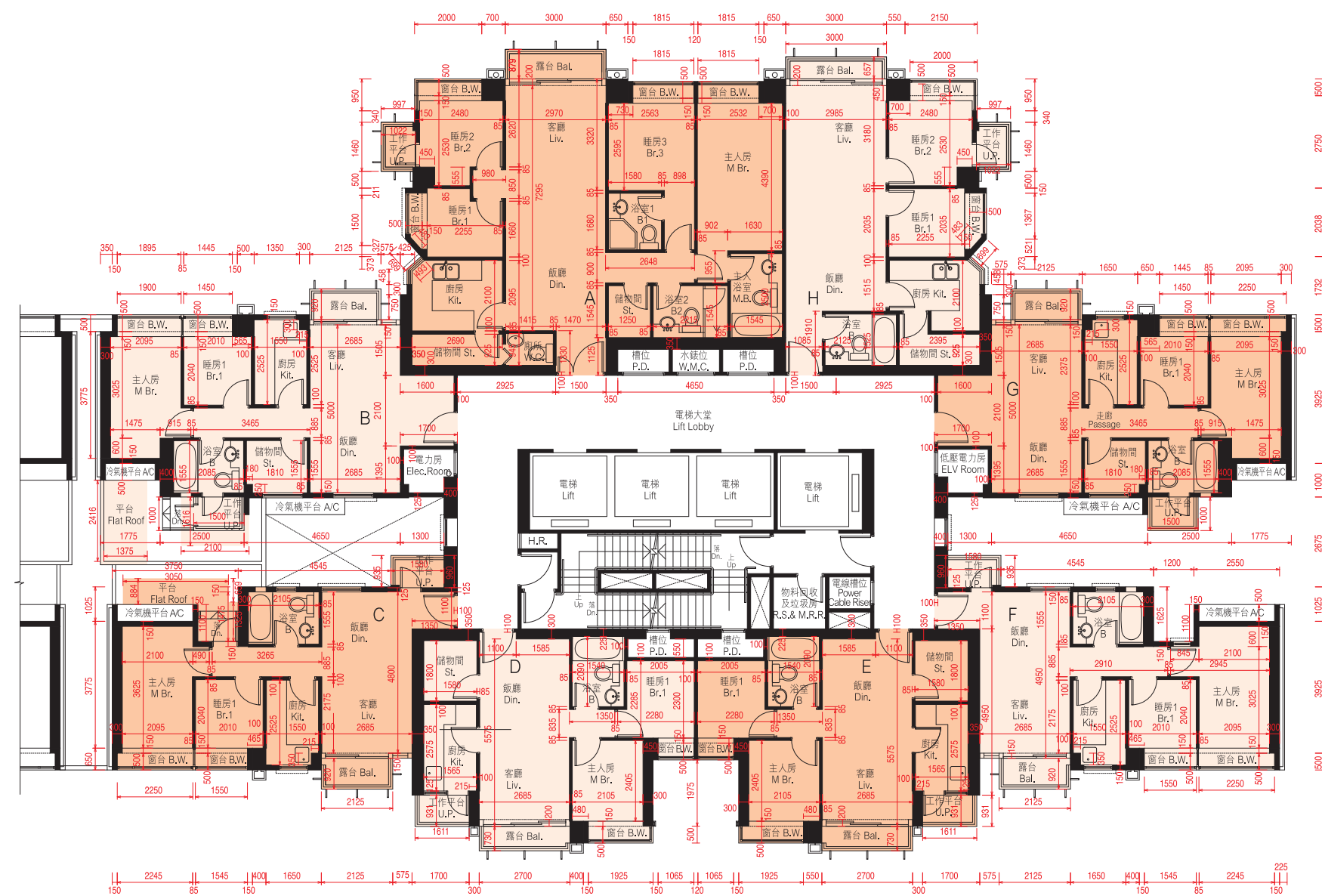
註釋 Explanatory Note :

貼鄰住客停車位的面積(不計算入停車位面積或實用面積): 地下B單位為6.781平方米(73平方呎)。
由工作平台或露台遮蓋之花園面積(已計算入花園面積): 地下B單位為6.205平方米(67平方呎)。根據屋宇署規定, 該面積最少兩邊不可圍封。
Area adjoining residential parking space (not included in the area of parking space or saleable area): Flat B on G/F is 6.781 sq.m. (73 sq.ft.).
Area of garden covered by utility platform or balcony (included in the area of garden): Flat B on G/F is 6.205 sq.m. (67 sq.ft.). Such area shall be unenclosed on at least 2 sides as required by Buildings Department.

10. 期數的住宅物業的樓面平面圖

FLOOR PLANS OF RESIDENTIAL PROPERTIES IN THE PHASE

第23座3樓平面圖 BLOCK 23 — 3/F FLOOR PLAN



比例尺SCALE: 0米(M) 5米(M)

因住宅物業的較高樓層的結構牆的厚度遞減，較高樓層的內部面積，一般比較低樓層的內部面積稍大。
請參閱本售樓說明書第77頁為住宅物業樓面平面圖而設之備註及名詞及簡稱的圖例。

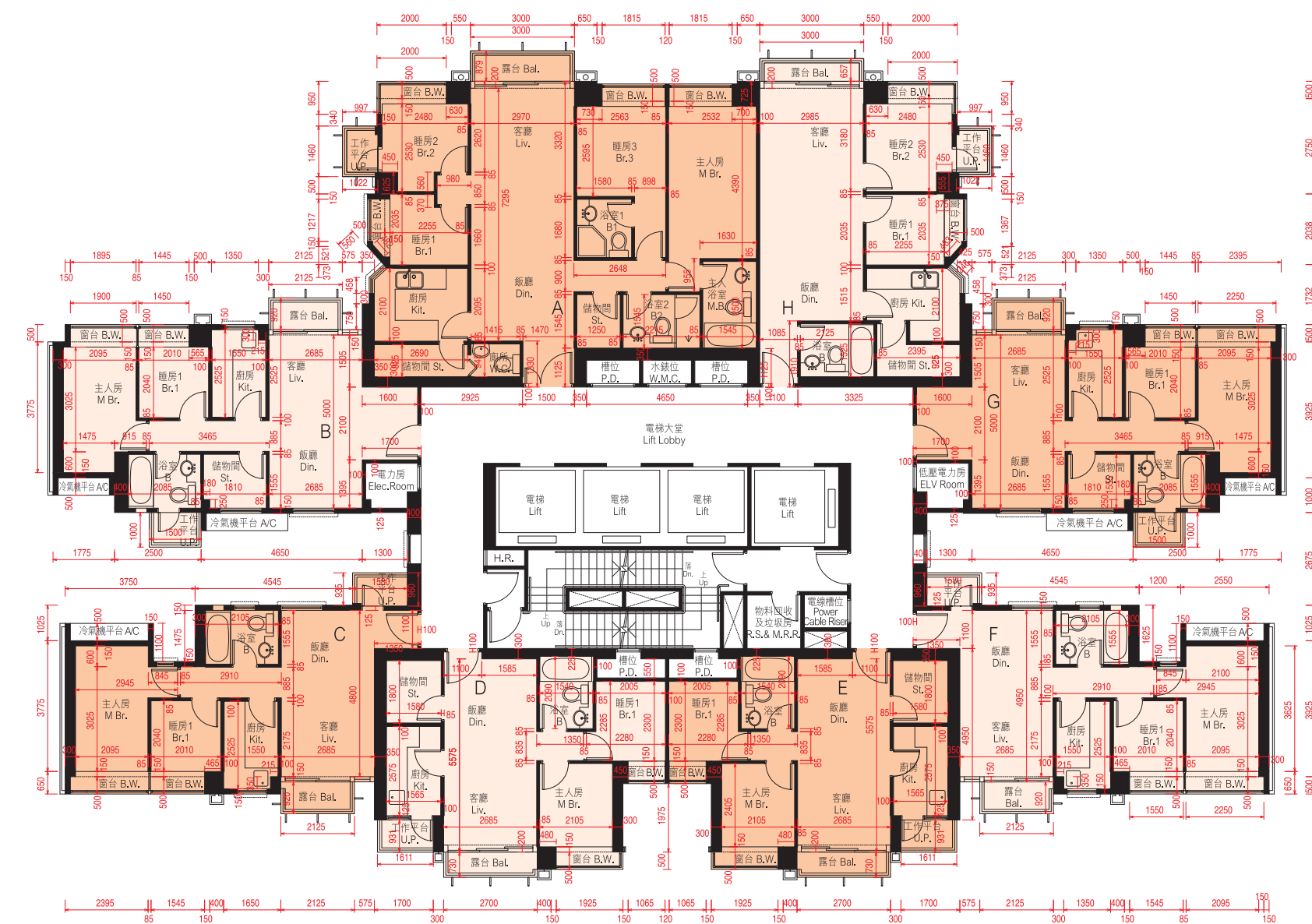
The internal areas of the residential properties on the upper floors will generally be slightly larger than those on the lower floors because of the reducing thickness of the structural walls on the upper floors.

Please refer to page 77 of this sales brochure for the remarks and legends of the terms and abbreviations for the floor plans of residential properties.

平台空白位置為供維修大廈設備使用的公用地方。
Blank areas on the flat roof are common areas for building facility maintenance.

備註：平面圖所列數字為以毫米標示之建築結構尺寸。
Note: The dimensions of floor plans are all structural dimensions in millimeter.

第23座5樓 - 11樓，16樓 - 20樓及23樓平面圖 BLOCK 23 — 5/F - 11/F, 16/F - 20/F & 23/F FLOOR PLAN



比例尺SCALE: 0米(M) 5米(M)

因住宅物業的較高樓層的結構牆的厚度遞減，較高樓層的內部面積，一般比較低樓層的內部面積稍大。
請參閱本售樓說明書第77頁為住宅物業樓面平面圖而設之備註及名詞及簡稱的圖例。

The internal areas of the residential properties on the upper floors will generally be slightly larger than those on the lower floors because of the reducing thickness of the structural walls on the upper floors.

Please refer to page 77 of this sales brochure for the remarks and legends of the terms and abbreviations for the floor plans of residential properties.

備註：平面圖所列數字為以毫米標示之建築結構尺寸。
Note: The dimensions of floor plans are all structural dimensions in millimeter.

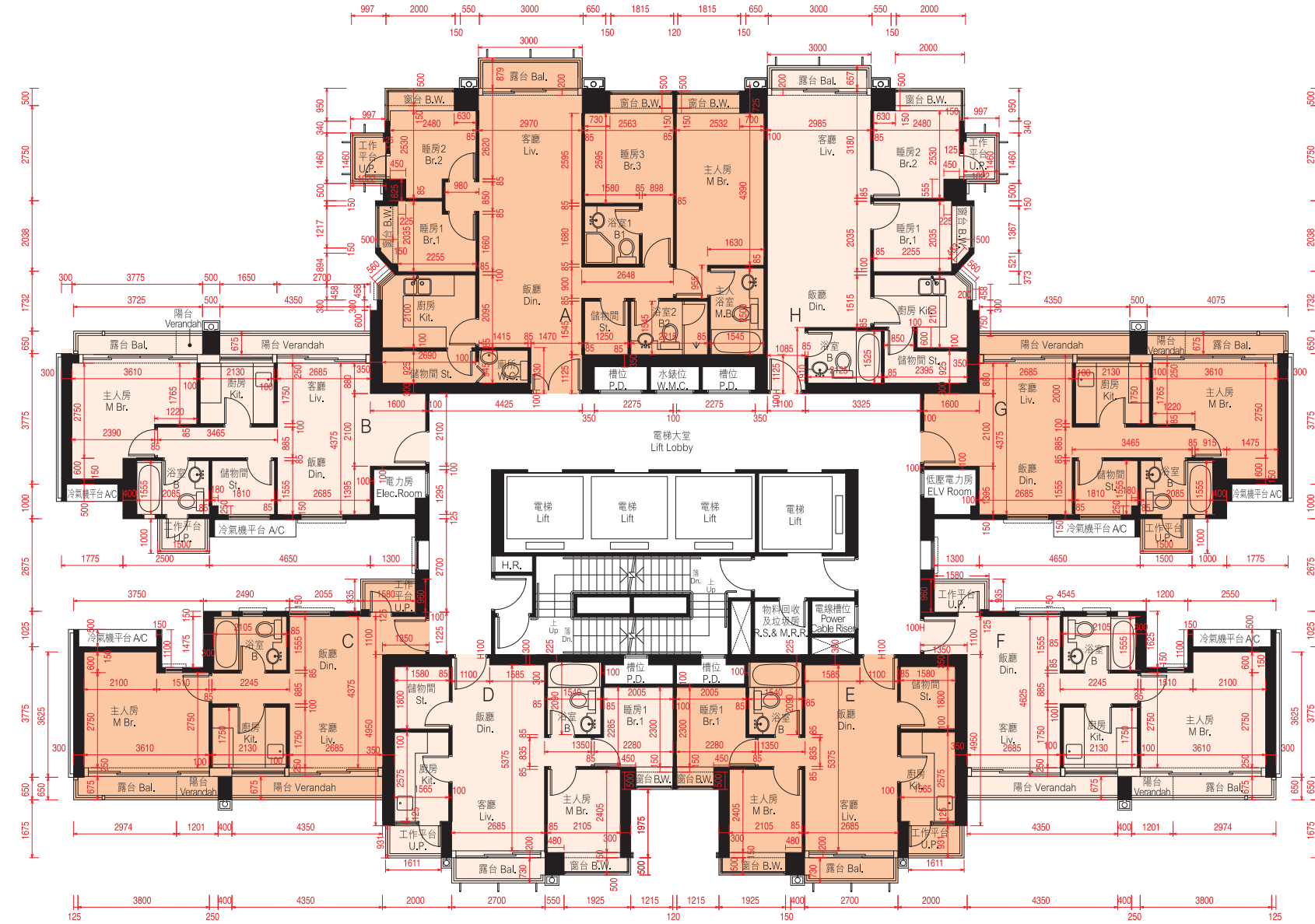
每個住宅物業 Each Residential Property	樓層 Floor	單位 Unit	A	B	C	D	E	F	G	H
層與層之間的高度 Floor to Floor Height (毫米 mm)	3/F		2950, 3150	3150	2950, 3150	2800, 2950, 3150	2950, 3150	3150	3150	2800, 3150
樓板(不包括灰泥)的厚度 Thickness of Floor Slab (excluding plaster) (毫米 mm)	3/F		150, 200, 225	150, 200, 500	150, 200, 500	150, 200	150, 200	150, 200	150, 200	150, 200, 225

每個住宅物業 Each Residential Property	樓層 Floor	單位 Unit	A	B	C	D	E	F	G	H
層與層之間的高度 Floor to Floor Height (毫米 mm)	5/F - 10/F, 16/F - 19/F		3150	3150	3150	3150	3150	3150	3150	3150
	11/F & 20/F		3150	2950, 3150	2950, 3150	3150	3150	2950, 3150	2950, 3150	3150
	23/F		2950, 3100, 3300	3100, 3300	3100, 3300	3300	3300	3100, 3300	3100, 3300	3100, 3300
樓板(不包括灰泥)的厚度 Thickness of Floor Slab (excluding plaster) (毫米 mm)	5/F - 10/F, 16/F - 19/F		150, 200, 225	150, 200	150, 200	150, 200	150, 200	150, 200	150, 200	150, 200, 225
	11/F & 20/F		150, 200, 225	150, 200	150, 200	150, 200	150, 200	150, 200	150, 200	150, 200, 225
	23/F		150, 200, 225	150, 200	150, 200	150, 200	150, 200	150, 200	150, 200	150, 200, 225

10. 期數的住宅物業的樓面平面圖

FLOOR PLANS OF RESIDENTIAL PROPERTIES IN THE PHASE

第23座12樓及21樓平面圖 BLOCK 23 — 12/F & 21/F FLOOR PLAN



比例尺SCALE: 0米(M) 5米(M)

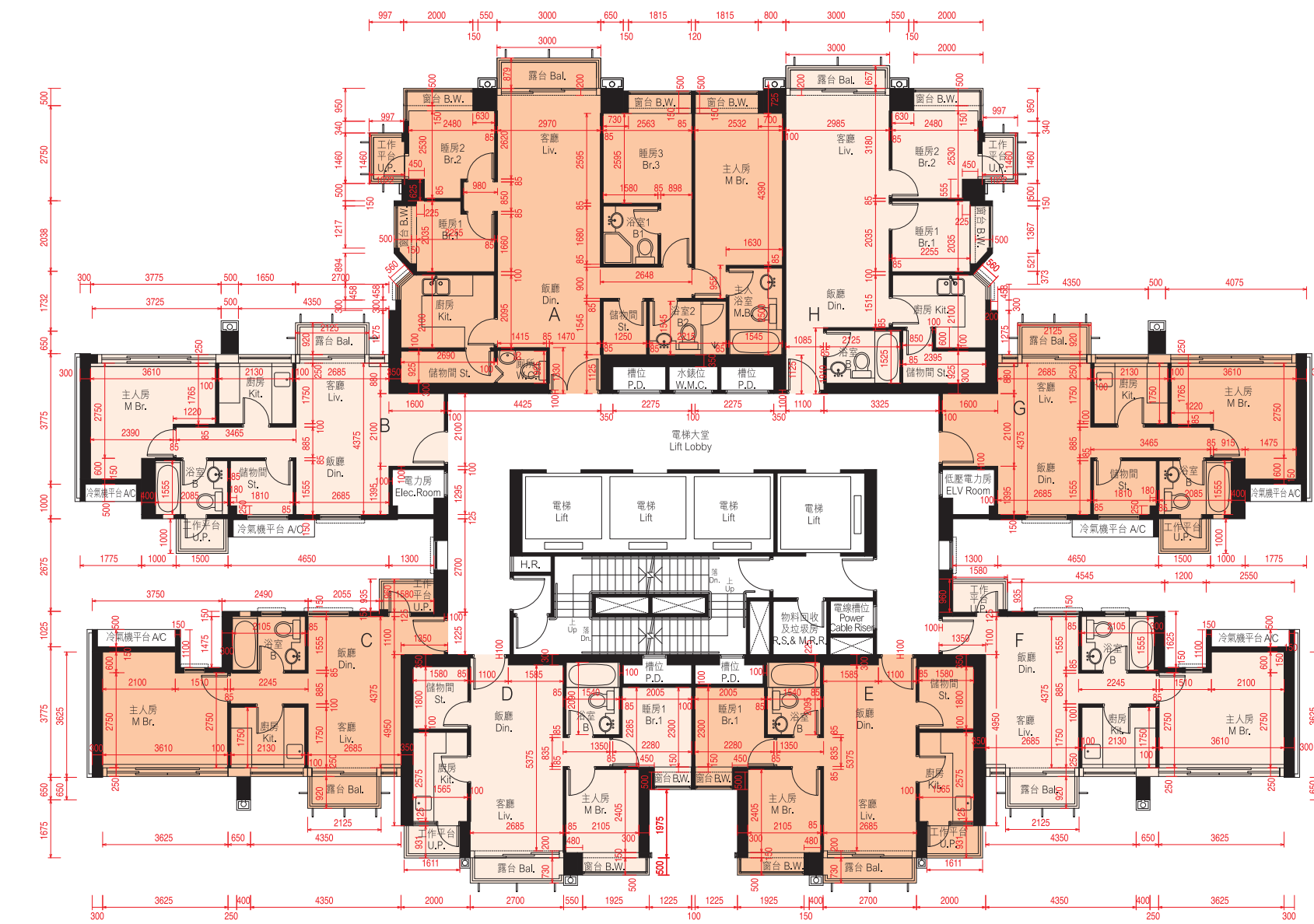
因住宅物業的較高樓層的結構牆的厚度遞減，較高樓層的內部面積，一般比較低樓層的內部面積稍大。
請參閱本售樓說明書第77頁為住宅物業樓面平面圖而設之備註及名詞及簡稱的圖例。

The internal areas of the residential properties on the upper floors will generally be slightly larger than those on the lower floors because of the reducing thickness of the structural walls on the upper floors.

Please refer to page 77 of this sales brochure for the remarks and legends of the terms and abbreviations for the floor plans of residential properties.

備註：平面圖所列數字為以毫米標示之建築結構尺寸。
Note: The dimensions of floor plans are all structural dimensions in millimeter.

第23座15樓及22樓平面圖 BLOCK 23 — 15/F & 22/F FLOOR PLAN



比例尺SCALE: 0米(M) 5米(M)

因住宅物業的較高樓層的結構牆的厚度遞減，較高樓層的內部面積，一般比較低樓層的內部面積稍大。
請參閱本售樓說明書第77頁為住宅物業樓面平面圖而設之備註及名詞及簡稱的圖例。

The internal areas of the residential properties on the upper floors will generally be slightly larger than those on the lower floors because of the reducing thickness of the structural walls on the upper floors.

Please refer to page 77 of this sales brochure for the remarks and legends of the terms and abbreviations for the floor plans of residential properties.

備註：平面圖所列數字為以毫米標示之建築結構尺寸。
Note: The dimensions of floor plans are all structural dimensions in millimeter.

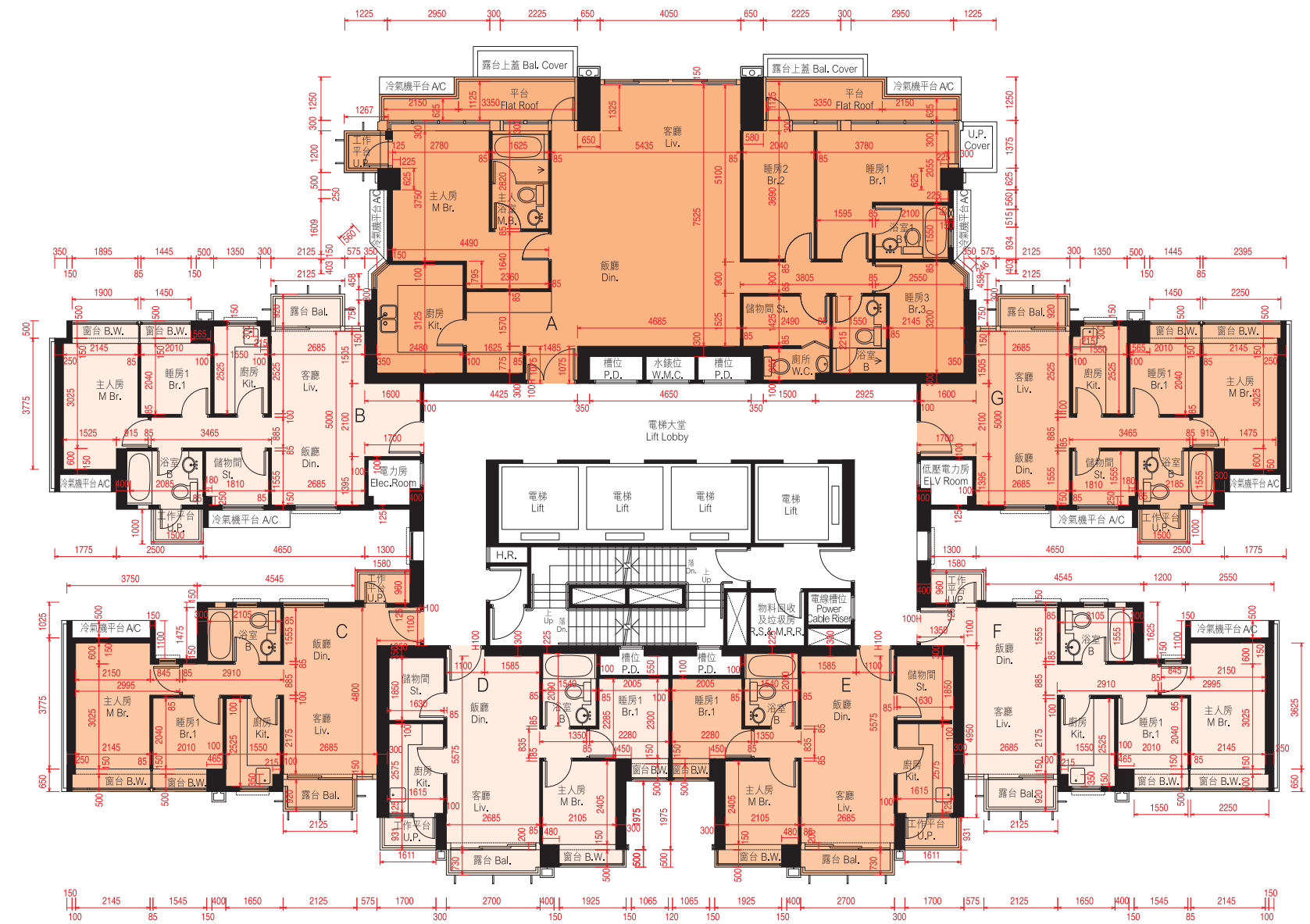
每個住宅物業 Each Residential Property	單位 Unit 樓層 Floor	A	B	C	D	E	F	G	H
層與層之間的高度 Floor to Floor Height (毫米 mm)	12/F & 21/F	3150	3150	3150	3150	3150	3150	3150	3150
樓板(不包括灰泥)的厚度 Thickness of Floor Slab (excluding plaster) (毫米 mm)	12/F & 21/F	150, 200, 225	150, 200	150, 200	150, 200	150, 200	150, 200	150, 200	150, 200, 225

每個住宅物業 Each Residential Property	單位 Unit 樓層 Floor	A	B	C	D	E	F	G	H
層與層之間的高度 Floor to Floor Height (毫米 mm)	15/F & 22/F	3150	3150	3150	3150	3150	3150	2800, 3150	3150
樓板(不包括灰泥)的厚度 Thickness of Floor Slab (excluding plaster) (毫米 mm)	15/F & 22/F	150, 200, 225	150, 200	150, 200	150, 200	150, 200	150, 200	150, 200	150, 200, 225

10. 期數的住宅物業的樓面平面圖

FLOOR PLANS OF RESIDENTIAL PROPERTIES IN THE PHASE

第23座25樓平面圖 BLOCK 23 — 25/F FLOOR PLAN



比例尺SCALE: 0米(M) 5米(M)

因住宅物業的較高樓層的結構牆的厚度遞減，較高樓層的內部面積，一般比較低樓層的內部面積稍大。
請參閱本售樓說明書第77頁為住宅物業樓面平面圖而設之備註及名詞及簡稱的圖例。

The internal areas of the residential properties on the upper floors will generally be slightly larger than those on the lower floors because of the reducing thickness of the structural walls on the upper floors.

Please refer to page 77 of this sales brochure for the remarks and legends of the terms and abbreviations for the floor plans of residential properties.

備註：平面圖所列數字為以毫米標示之建築結構尺寸。
Note: The dimensions of floor plans are all structural dimensions in millimeter.

第23座26樓平面圖 BLOCK 23 — 26/F FLOOR PLAN



比例尺SCALE: 0米(M) 5米(M)

因住宅物業的較高樓層的結構牆的厚度遞減，較高樓層的內部面積，一般比較低樓層的內部面積稍大。
請參閱本售樓說明書第77頁為住宅物業樓面平面圖而設之備註及名詞及簡稱的圖例。

The internal areas of the residential properties on the upper floors will generally be slightly larger than those on the lower floors because of the reducing thickness of the structural walls on the upper floors.

Please refer to page 77 of this sales brochure for the remarks and legends of the terms and abbreviations for the floor plans of residential properties.

備註：平面圖所列數字為以毫米標示之建築結構尺寸。
Note: The dimensions of floor plans are all structural dimensions in millimeter.

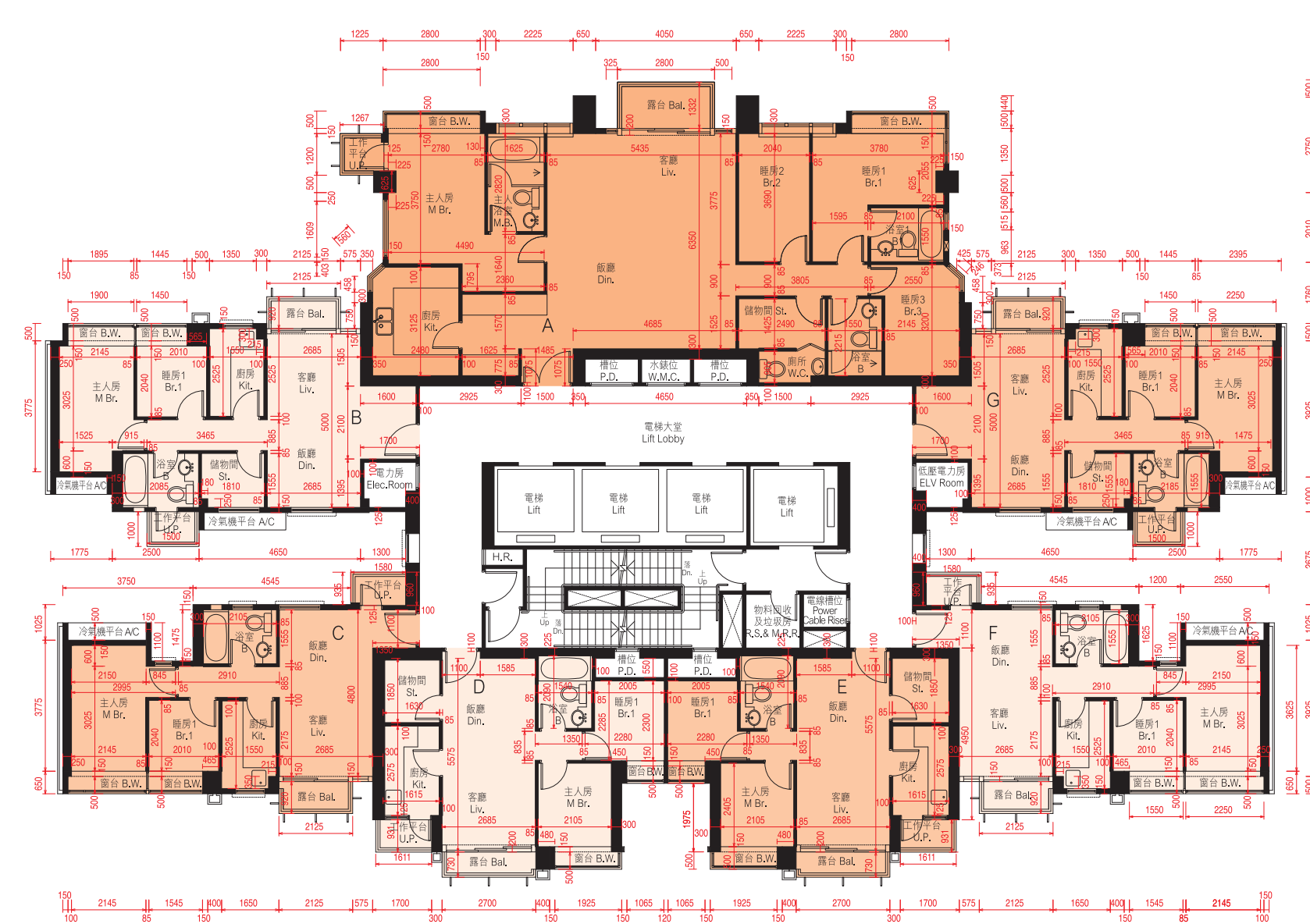
每個住宅物業 Each Residential Property	樓層 Floor	單位 Unit	A	B	C	D	E	F	G
層與層之間的高度 Floor to Floor Height (毫米 mm)	25/F		2950, 3300	3300	3300	3300	3300	3300	3300
樓板(不包括灰泥)的厚度 Thickness of Floor Slab (excluding plaster) (毫米 mm)	25/F		150, 200, 225	150, 200	150, 200	150, 200	150, 200	150, 200	150, 200

每個住宅物業 Each Residential Property	樓層 Floor	單位 Unit	A	B	C	D	E	F	G
層與層之間的高度 Floor to Floor Height (毫米 mm)	26/F		3150	3150	2950, 3150	3150	3150	3150	3150
樓板(不包括灰泥)的厚度 Thickness of Floor Slab (excluding plaster) (毫米 mm)	26/F		200, 225, 275	150, 200	150, 200	150, 200	150, 200	150, 200	150, 200

10. 期數的住宅物業的樓面平面圖

FLOOR PLANS OF RESIDENTIAL PROPERTIES IN THE PHASE

第23座27樓-28樓, 31樓-33樓及35樓-36樓平面圖 BLOCK 23 — 27/F - 28/F, 31/F - 33/F & 35/F - 36/F FLOOR PLAN



比例尺SCALE: 0米(M) 5米(M)

因住宅物業的較高樓層的結構牆的厚度遞減, 較高樓層的內部面積, 一般比較低樓層的內部面積稍大。
請參閱本售樓說明書第77頁為住宅物業樓面平面圖而設之備註及名詞及簡稱的圖例。

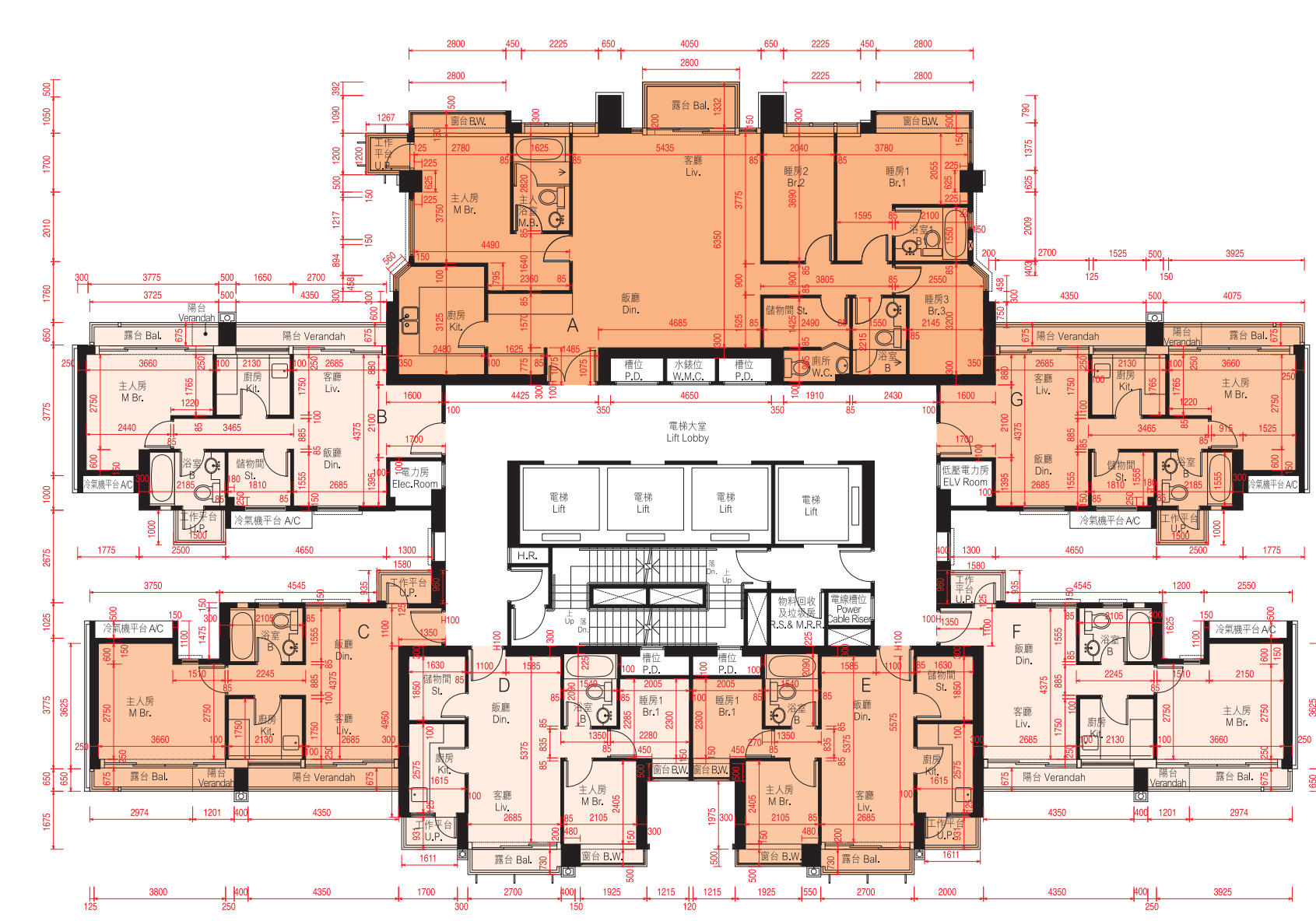
The internal areas of the residential properties on the upper floors will generally be slightly larger than those on the lower floors because of the reducing thickness of the structural walls on the upper floors.

Please refer to page 77 of this sales brochure for the remarks and legends of the terms and abbreviations for the floor plans of residential properties.

備註: 平面圖所列數字為以毫米標示之建築結構尺寸。
Note: The dimensions of floor plans are all structural dimensions in millimeter.

每個住宅物業 Each Residential Property	單位 Unit	A	B	C	D	E	F	G
層與層之間的高度 Floor to Floor Height (毫米 mm)	27/F, 31/F - 33/F & 35/F - 36/F	3150	3150	2950, 3150	3150	3150	3150	3150
	28/F	3150	2950, 3150	2950, 3150	3150	3150	2950, 3150	2950, 3150
樓板(不包括灰泥)的厚度 Thickness of Floor Slab (excluding plaster) (毫米 mm)	27/F, 31/F - 33/F & 35/F - 36/F	200, 225, 275	150, 200	150, 200	150, 200	150, 200	150, 200	150, 200
	28/F	200, 225, 275	150, 200	150, 200	150, 200	150, 200	150, 200	150, 200

第23座29樓平面圖 BLOCK 23 — 29/F FLOOR PLAN



比例尺SCALE: 0米(M) 5米(M)

因住宅物業的較高樓層的結構牆的厚度遞減, 較高樓層的內部面積, 一般比較低樓層的內部面積稍大。
請參閱本售樓說明書第77頁為住宅物業樓面平面圖而設之備註及名詞及簡稱的圖例。

The internal areas of the residential properties on the upper floors will generally be slightly larger than those on the lower floors because of the reducing thickness of the structural walls on the upper floors.

Please refer to page 77 of this sales brochure for the remarks and legends of the terms and abbreviations for the floor plans of residential properties.

備註: 平面圖所列數字為以毫米標示之建築結構尺寸。
Note: The dimensions of floor plans are all structural dimensions in millimeter.

每個住宅物業 Each Residential Property	單位 Unit	A	B	C	D	E	F	G
層與層之間的高度 Floor to Floor Height (毫米 mm)	29/F	3150	3150	3150	3150	3150	3150	3150
樓板(不包括灰泥)的厚度 Thickness of Floor Slab (excluding plaster) (毫米 mm)	29/F	200, 225, 275	150, 200	150, 200	150, 200	150, 200	150, 200	150, 200

10. 期數的住宅物業的樓面平面圖 FLOOR PLANS OF RESIDENTIAL PROPERTIES IN THE PHASE

第23座30樓及38樓 平面圖 BLOCK 23 — 30/F & 38/F FLOOR PLAN



比例尺SCALE: 0米(M) 5米(M)

因住宅物業的較高樓層的結構牆的厚度遞減，較高樓層的內部面積，一般比較低樓層的內部面積稍大。
請參閱本售樓說明書第77頁為住宅物業樓面平面圖而設之備註及名詞及簡稱的圖例。

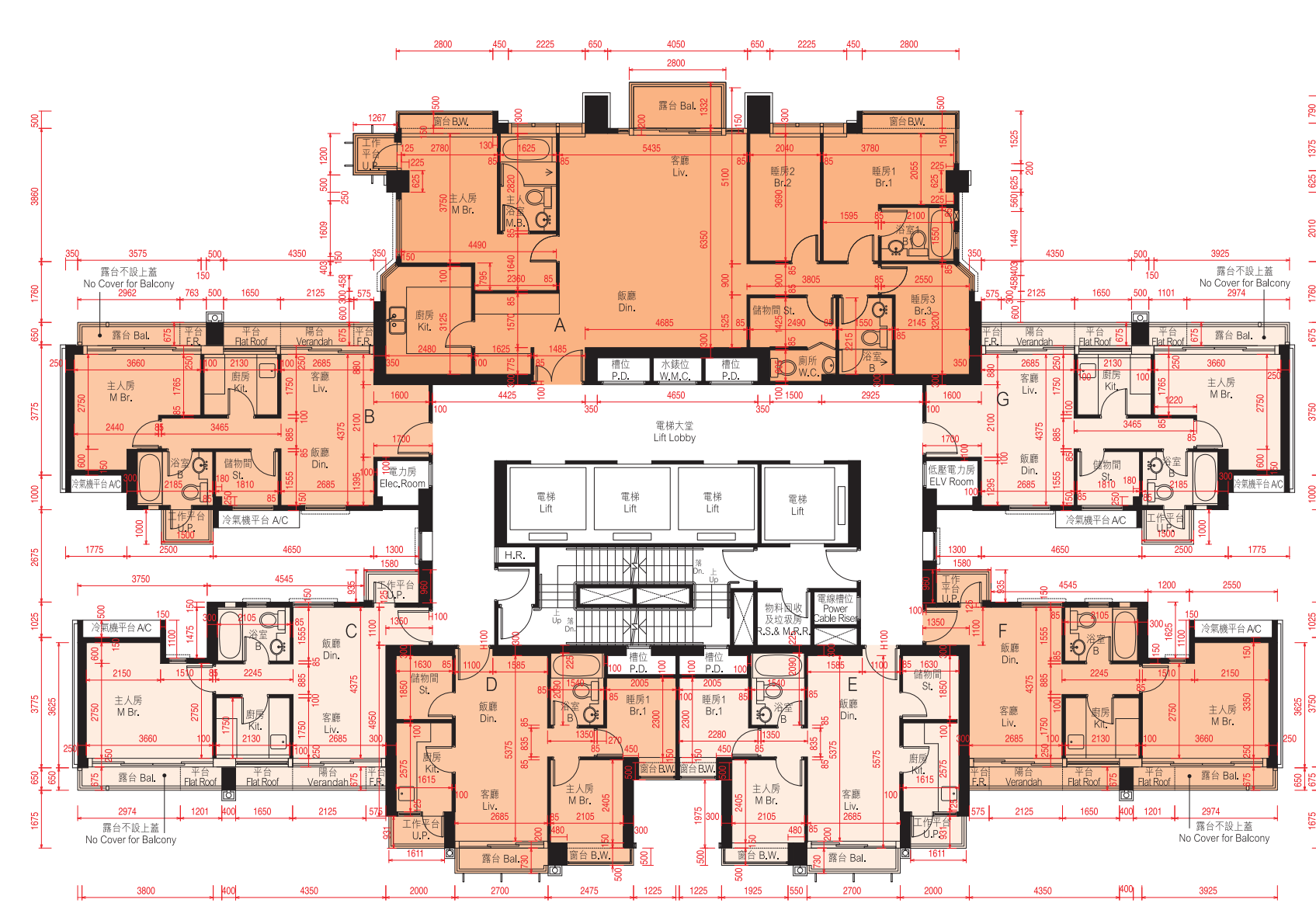
The internal areas of the residential properties on the upper floors will generally be slightly larger than those on the lower floors because of the reducing thickness of the structural walls on the upper floors.
Please refer to page 77 of this sales brochure for the remarks and legends of the terms and abbreviations for the floor plans of residential properties.

- *包括800毫米厚之結構轉換層。
- *包括1100毫米厚之結構轉換層及混凝土填充層。
- *Including 800mm thick transfer plate.
- *Including 1100mm thick transfer plate and mass concrete fill.

備註：平面圖所列數字為以毫米標示之建築結構尺寸。
Note: The dimensions of floor plans are all structural dimensions in millimeter.

每個住宅物業 Each Residential Property	樓層 Floor	單位 Unit	A	B	C	D	E	F	G
層與層之間的高度 Floor to Floor Height (毫米 mm)	30/F		3150	3150	3150	3150	3150	3150	3150
	38/F		3800#, 4100*	3250, 3350, 3800#, 4100*	3500, 3800#, 4100*	3800#, 4100*	3800#, 4100*	3500, 3800#, 4100*	3150, 3350, 3800#, 4100*
樓板(不包括灰泥)的厚度 Thickness of Floor Slab (excluding plaster) (毫米 mm)	30/F		200, 225, 275	150, 200	150, 200	150, 200	150, 200	150, 200	150, 200
	38/F		225, 800, 1100	150, 200, 250, 350, 800, 1100	150, 200, 250, 800, 1100	200, 800, 1100	200, 800, 1100	150, 200, 250, 800, 1100	150, 200, 800, 1100

第23座37樓平面圖 BLOCK 23 — 37/F FLOOR PLAN



比例尺SCALE: 0米(M) 5米(M)

因住宅物業的較高樓層的結構牆的厚度遞減，較高樓層的內部面積，一般比較低樓層的內部面積稍大。
請參閱本售樓說明書第77頁為住宅物業樓面平面圖而設之備註及名詞及簡稱的圖例。

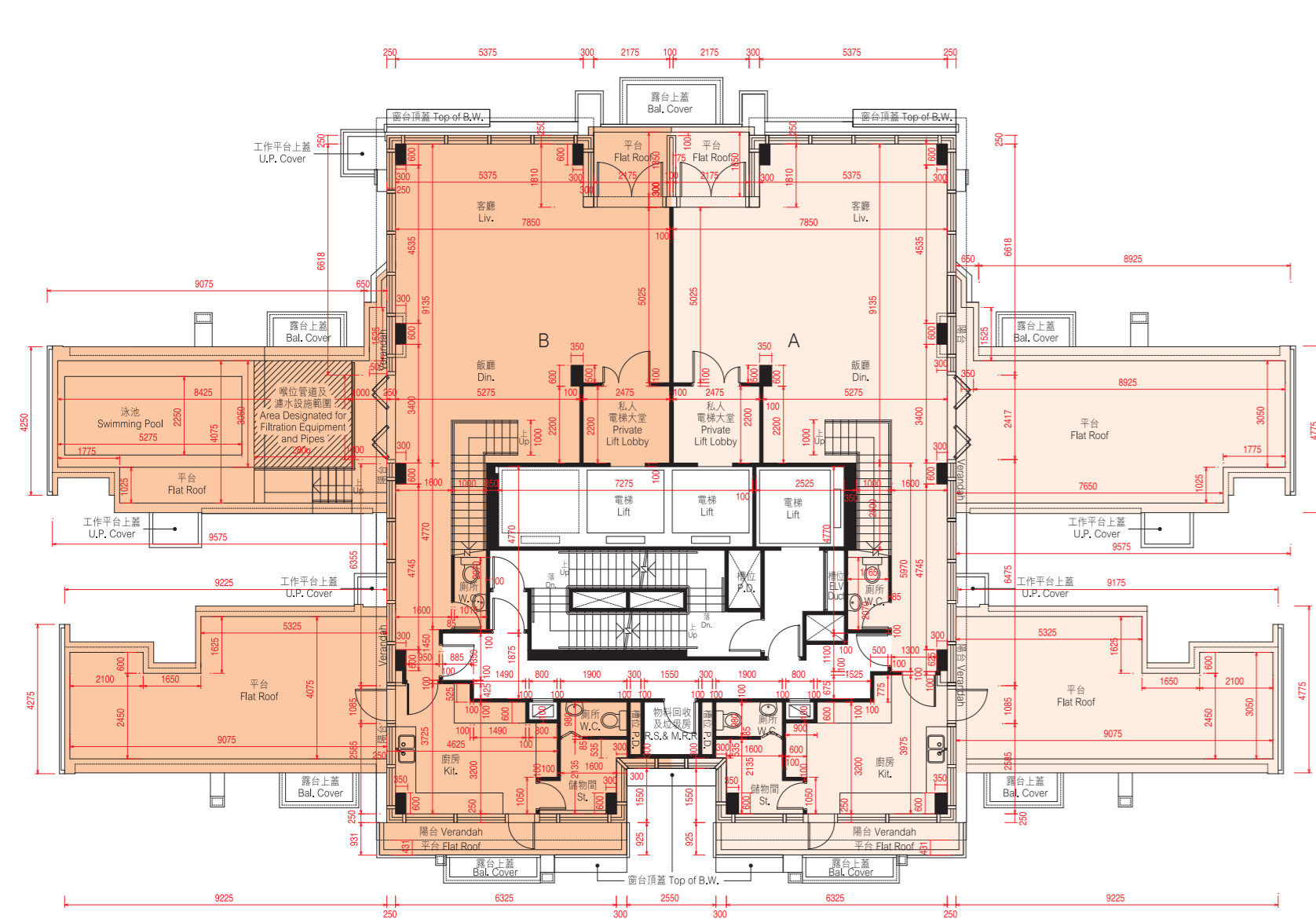
The internal areas of the residential properties on the upper floors will generally be slightly larger than those on the lower floors because of the reducing thickness of the structural walls on the upper floors.
Please refer to page 77 of this sales brochure for the remarks and legends of the terms and abbreviations for the floor plans of residential properties.

備註：平面圖所列數字為以毫米標示之建築結構尺寸。
Note: The dimensions of floor plans are all structural dimensions in millimeter.

每個住宅物業 Each Residential Property	樓層 Floor	單位 Unit	A	B	C	D	E	F	G
層與層之間的高度 Floor to Floor Height (毫米 mm)	37/F		3150	3150	3150	3150	3150	3150	3150
樓板(不包括灰泥)的厚度 Thickness of Floor Slab (excluding plaster) (毫米 mm)	37/F		200, 225, 275	150, 200	150, 200	150, 200	150, 200	150, 200	150, 200

10. 期數的住宅物業的樓面平面圖 FLOOR PLANS OF RESIDENTIAL PROPERTIES IN THE PHASE

第23座39樓平面圖 (複式低層) BLOCK 23 — 39/F FLOOR PLAN (LOWER DUPLEX)



比例尺SCALE: 0米(M) 5米(M)

備註 Note:

1. 平面圖所列數字為以毫米標示之建築結構尺寸。
 2. 以平方呎顯示之面積均依據1平方米=10.764平方呎換算，並四捨五入至整數。
1. The dimensions of floor plans are all structural dimensions in millimeter.
2. Areas in square feet are converted at a rate of 1 square metre to 10.764 square feet and rounded to the nearest integer.

註釋 Explanatory Note:

已預留作喉位管道及濾水設施之沒有遮蓋的面積(已計算入平台面積): 39樓B單位為8,540平方米(92平方呎)。因住宅物業的較高樓層的結構牆的厚度遞減，較高樓層的內部面積，一般比較低樓層的內部面積稍大。請參閱本售樓說明書第77頁為住宅物業樓面平面圖而設之備註及名詞及簡稱的圖例。

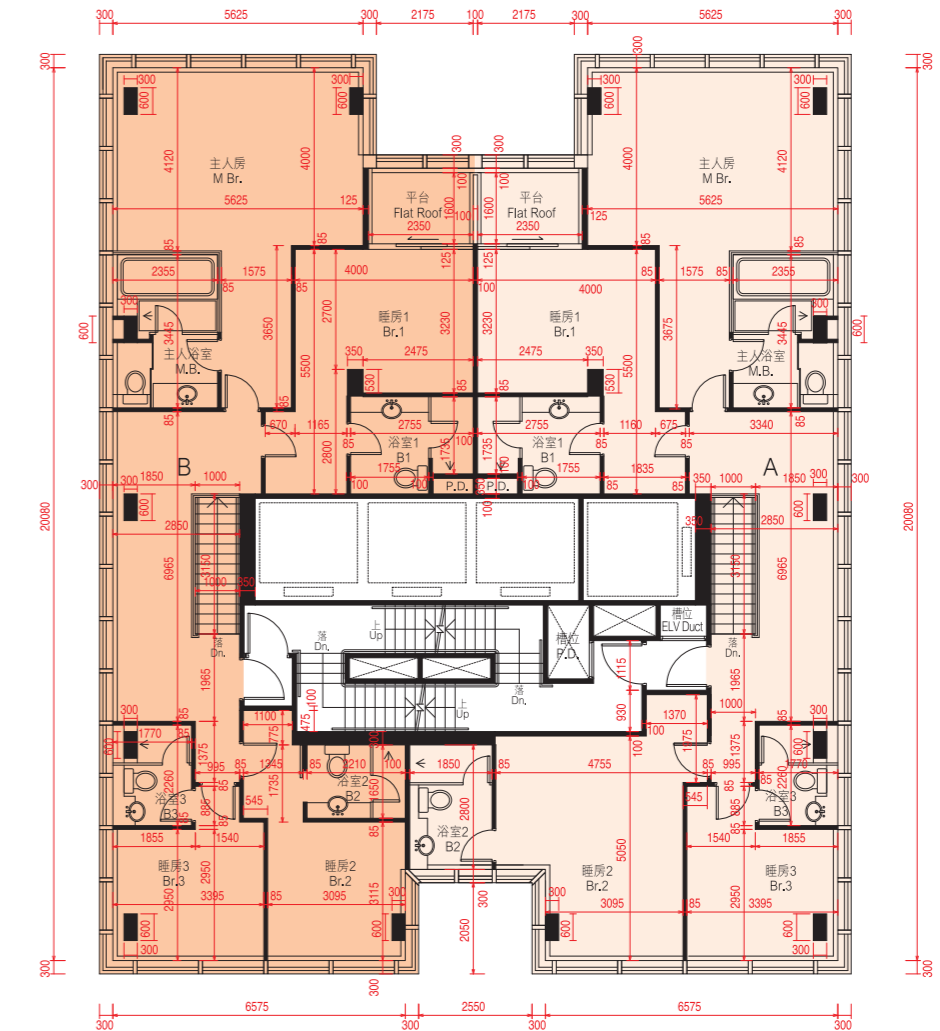
Uncovered area designated for filtration equipment and pipes (included in the area of flat roof): Flat B on 39/F is 8,540 sq.m. (92 sq.ft.).

The internal areas of the residential properties on the upper floors will generally be slightly larger than those on the lower floors because of the reducing thickness of the structural walls on the upper floors.

Please refer to page 77 of this sales brochure for the remarks and legends of the terms and abbreviations for the floor plans of residential properties.

每個住宅物業 Each Residential Property	單位 Unit 樓層 Floor	A	B
層與層之間的高度 Floor to Floor Height (毫米 mm)	39/F	3340, 3500	3340, 3500
樓板(不包括灰泥)的厚度 Thickness of Floor Slab (excluding plaster) (毫米 mm)	39/F	140, 300	140, 300

第23座40樓平面圖 (複式高層) BLOCK 23 — 40/F FLOOR PLAN (UPPER DUPLEX)



比例尺SCALE: 0米(M) 5米(M)

因住宅物業的較高樓層的結構牆的厚度遞減，較高樓層的內部面積，一般比較低樓層的內部面積稍大。請參閱本售樓說明書第77頁為住宅物業樓面平面圖而設之備註及名詞及簡稱的圖例。

The internal areas of the residential properties on the upper floors will generally be slightly larger than those on the lower floors because of the reducing thickness of the structural walls on the upper floors.

Please refer to page 77 of this sales brochure for the remarks and legends of the terms and abbreviations for the floor plans of residential properties.

備註: 平面圖所列數字為以毫米標示之建築結構尺寸。
Note: The dimensions of floor plans are all structural dimensions in millimeter.

每個住宅物業 Each Residential Property	單位 Unit 樓層 Floor	A	B
層與層之間的高度 Floor to Floor Height (毫米 mm)	40/F	3250, 3500	3250, 3500
樓板(不包括灰泥)的厚度 Thickness of Floor Slab (excluding plaster) (毫米 mm)	40/F	150, 200	150, 200

