

## 10 發展項目的住宅物業的樓面平面圖 Floor Plans of Residential Properties in the Development

### 平面圖圖例 Legend for Floor Plan

AT _/F - _/F	= 於_樓-_樓
A.D.	= AIR DUCT = 風槽
A.F.	= ARCHITECTURAL FEATURE = 建築裝飾
A/C PLANT ROOM	= AIR CONDITIONING PLANT ROOM = 冷氣機房
A/C PLANT ROOM (CLUBHOUSE)	= AIR CONDITIONER PLANT ROOM (CLUBHOUSE) = 冷氣機房(會所)
A/C PLATFORM	= AIR CONDITIONER PLATFORM = 冷氣機平台
A/C PLATFORM FOR UNIT _	= AIR CONDITIONER PLATFORM FOR UNIT _ = _單位的冷氣機平台
BAL.	= BALCONY = 露台
BATH	= BATHROOM = 浴室
BATH 1	= BATHROOM 1 = 浴室 1
BATH 2	= BATHROOM 2 = 浴室 2
BED	= BEDROOM = 睡房
BED 1	= BEDROOM 1 = 睡房 1
BED 2	= BEDROOM 2 = 睡房 2
B.W.	= BAY WINDOW = 窗台
CLO.	= CLOSET = 衣帽間
COMMON CORRIDOR	= 公用走廊
COMMON FLAT ROOF	= 公用平台
COVERED AREA UNDERNEATH THE LOWEST BAL.	= COVERED AREA UNDERNEATH THE LOWEST BALCONY = 最低露台下的有蓋地方
COVERED AREA UNDERNEATH THE LOWEST UP.	= COVERED AREA UNDERNEATH THE LOWEST UTILITY PLATFORM = 最低工作平台下的有蓋地方
COVERED LANDSCAPE	= 有蓋綠化
DAVIT ARM STORAGE	= 吊臂存放區
DESIGNATED COMMON AREA IN DMC FOR MAINTENANCE	= DESIGNATED COMMON AREA IN DEED OF MUTUAL COVENANT FOR MAINTENANCE = 公契中用作保養的特定公用地方
DIN.	= DINING ROOM = 飯廳
DN	= DOWN = 落
DUPLEX	= 複式單位
ELEC. ROOM	= ELECTRICAL ROOM = 電錶房
ELV.	= EXTRA LOW VOLTAGE ROOM = 特低壓電錶房

ELV ROOM	= EXTRA LOW VOLTAGE ROOM = 特低壓電錶房
EMR.	= ELECTRICAL METER ROOM = 電錶房
EXTERNAL A/C PLANT ROOM (CLUBHOUSE)	= EXTERNAL AIR CONDITIONER PLANT ROOM (CLUBHOUSE) = 室外冷氣機房(會所)
E&M	= ELECTRICAL AND MECHANICAL = 機電
F	= FIXED WINDOW = 固定式窗戶
FAN ROOM	= 風機房
FH/HR WATER TANK	= FIRE HYDRANT / HOSE REEL WATER TANK = 消防栓 / 消防喉轆水缸
FLAT ROOF	= 平台
FLUSHING WATER TANK	= 沖廁水缸
FLUSHING WATER TANK & PUMP ROOM	= 沖廁水缸及泵房
FUNCTION ROOM	= 用途房
FSI	= FIRE SERVICE INSTALLATIONS = 消防裝置
GENSET ROOM	= GENERATOR ROOM = 發電機房
GENSET ROOM (FSI)	= GENERATOR ROOM (FIRE SERVICE INSTALLATIONS) = 發電機房 (消防裝置)
GENSET ROOM 1 (FSI)	= GENERATOR ROOM 1 (FIRE SERVICE INSTALLATIONS) = 發電機房 1 (消防裝置)
GENSET ROOM 2 (NON FSI)	= GENERATOR ROOM 2 (NON FIRE SERVICE INSTALLATIONS) = 發電機房 2 (非消防裝置)
H.R.	= HOSE REEL = 消防喉轆
INACCESSIBLE COMMON FLAT ROOF	= 無法進入的公用平台
KIT.	= KITCHEN = 廚房
LAV.	= LAVATORY = 洗手間
LIV.	= LIVING ROOM = 客廳
LIFT	= 升降機
LIFT LOBBY	= 升降機大堂
LIFT MACHINE ROOM	= 升降機機房
LIFT SHAFT	= 升降機槽
M	= MAINTENANCE WINDOW = 維修窗戶
MALE TOILET	= 男性洗手間

適用於本節各樓面平面圖之備註：

- 部份樓層外牆範圍設有建築裝飾。詳細資料請參考最新經批准的建築圖則。
- 部份住宅單位的露台及/或平台及/或外牆處或附近設有外露之公用喉管。
- 部份住宅單位客廳、飯廳、睡房、走廊、浴室、化妝室、儲物室、工作間、洗手間及廚房天花有跌級樓板及/或假天花用以裝置冷氣系統及/或其他機電設備。部份儲物室及洗手間內設有冷氣及/或機電設備之外露喉管/管道。
- 露台及露台下的有蓋地方和工作平台及工作平台下的有蓋地方為不可封閉的地方。
- 樓面平面圖上所顯示的裝置符號，如浴缸、洗滌盆、座廁、花灑、洗滌盆櫃、爐具等乃按最新的經批准的建築圖則繪製，只作一般示意用途。

Notes applicable to the floor plans of this section :

- There may be architectural features on external walls of some of the floors. For details, please refer to the latest approved building plans.
- Common pipes exposed are located at or adjacent to balcony and/ or flat roof and/ or external wall of some residential flats.
- There are sunken slabs and/ or ceiling bulkheads at the ceiling of living rooms, dining rooms, bedrooms, corridors, bathrooms, powder rooms, store rooms, utility room, lavatories and kitchens of some residential flats for the installation of air-conditioning system and/ or other mechanical & electrical services. There are exposed pipes/ ductings for air-conditioning system and/ or mechanical & electrical services within some store rooms and lavatories.
- Balconies and the covered areas underneath the balconies and utility platforms and the covered areas underneath the utility platforms are non-enclosed areas.
- Symbols of fittings and fitments shown on floor plans such as bath tub, sink, water closet, shower, sink counter, stove, etc. are prepared based on the latest approved building plans and are for general indication only.

## 10 發展項目的住宅物業的樓面平面圖 Floor Plans of Residential Properties in the Development

### 平面圖圖例 Legend for Floor Plan

M. BED	= MASTER BEDROOM	= 主人睡房
M. BATH	= MASTER BATHROOM	= 主人浴室
OPEN GAS HEATER / TG	= AREA FOR GAS HEATER	= 氣體熱水爐範圍
OPEN KIT.	= OPEN KITCHEN	= 開放式廚房
OPEN STAIRCASE		= 開放式樓梯
PANTRY		= 食品儲藏室
PART PLAN OF _/F (FOR UNIT _)		= __樓的部份平面圖 (適用於__單位)
PLANTER		= 花槽
POTABLE WATER TANK		= 食水缸
POTABLE WATER TANK AND PUMP ROOM		= 食水缸及泵房
P. RM. / POWDER	= POWDER ROOM	= 化妝室
PRIVATE GARDEN		= 私人花園
PRIVATE ROOF		= 私人天台
P.D.	= PIPE DUCT	= 管道槽
P.L.	= PROTECTED LOBBY	= 防火大堂
R.C.	= REINFORCED CONCRETE	= 鋼筋混凝土
R.C RAINWATER HARVESTING TANK	= REINFORCED CONCRETE RAINWATER HARVESTING TANK	= 鋼筋混凝土雨水回收缸
RAINWATER HARVESTING PUMP ROOM		= 雨水回收泵房
ROOF OF _		= _之天台
RS&MRR	= REFUSE STORAGE AND MATERIAL RECOVERY ROOM	= 垃圾及物料回收室
STORE	= STORE ROOM	= 儲物室
TRANSFER PLATE ABOVE		= 轉換結構置上
T1	= TOWER 1	= 第1座
T2	= TOWER 2	= 第2座
UNISEX ACCESSIBLE LAV.	= UNISEX ACCESSIBLE LAVATORY	= 暢通易達洗手間
UP		= 上
UPPER PART OF _		= _之高位
UPPER PART OF 2/F		= 2樓之上層

適用於本節各樓面平面圖之備註：

- 部份樓層外牆範圍設有建築裝飾。詳細資料請參考最新經批准的建築圖則。
- 部份住宅單位的露台及/或平台及/或外牆處或附近設有外露之公用喉管。
- 部份住宅單位客廳、飯廳、睡房、走廊、浴室、化妝室、儲物室、工作間、洗手間及廚房天花有跌級樓板及/或假天花用以裝置冷氣系統及/或其他機電設備。部份儲物室及洗手間內設有冷氣及/或機電設備之外露喉管/管道。
- 露台及露台下的有蓋地方和工作平台及工作平台下的有蓋地方為不可封閉的地方。
- 樓面平面圖上所顯示的裝置符號，如浴缸、洗滌盆、座廁、花灑、洗滌盆櫃、爐具等乃按最新的經批准的建築圖則繪製，只作一般示意用途。

UT.	= UTILITY ROOM	= 工作間
U.P.	= UTILITY PLATFORM	= 工作平台
VERTICAL ACOUSTIC FIN		= 垂直隔聲鰭
VOU.	= AIR CONDITIONER OUTDOOR UNIT	= 室外冷氣機
WATER FEATURE		= 水裝飾
WMC.	= WATER METER CABINET	= 水錶櫃
N1	= ACOUSTIC BALCONY	= 減音露台
N2	= ACOUSTIC SLIDING DOOR	= 減音趟門
N3	= ACOUSTIC WINDOW (BAFFLE TYPE)	= 減音窗 (擋音式)
N4	= ENHANCED ACOUSTIC WINDOW (BAFFLE TYPE)	= 強效減音窗 (擋音式)
N5	= ENHANCED ACOUSTIC SLIDING DOOR (TYPE 1)	= 強效減音趟門 (第1款)
N6	= ENHANCED ACOUSTIC SLIDING DOOR (TYPE 2)	= 強效減音趟門 (第2款)
N7	= BALCONY/UTILITY PLATFORM WITH AUTO-CLOSE DOOR	= 設於露台/工作平台的自動關閉式門
N8	= ACOUSTIC FIN	= 隔聲鰭
N10	= 1.2M HIGH PARAPET WALL	= 1.2米高護牆
N13	= SOLID FENCE WALL (IN WHICH 1.2m OF THE LOWER PART ACTS AS NOISE MITIGATION MEASURES)	= 實心圍牆 (較低的1.2米為噪音緩解措施)
	= TEMPORARY REFUGE SPACE	= 臨時庇護處

Notes applicable to the floor plans of this section :

- There may be architectural features on external walls of some of the floors. For details, please refer to the latest approved building plans.
- Common pipes exposed are located at or adjacent to balcony and/ or flat roof and/ or external wall of some residential flats.
- There are sunken slabs and/ or ceiling bulkheads at the ceiling of living rooms, dining rooms, bedrooms, corridors, bathrooms, powder rooms, store rooms, utility room, lavatories and kitchens of some residential flats for the installation of air-conditioning system and/ or other mechanical & electrical services. There are exposed pipes/ ductings for air-conditioning system and/ or mechanical & electrical services within some store rooms and lavatories.
- Balconies and the covered areas underneath the balconies and utility platforms and the covered areas underneath the utility platforms are non-enclosed areas.
- Symbols of fittings and fitments shown on floor plans such as bath tub, sink, water closet, shower, sink counter, stove, etc. are prepared based on the latest approved building plans and are for general indication only.

## 10 發展項目的住宅物業的樓面平面圖 Floor Plans of Residential Properties in the Development

第1座 Tower 1	樓層 Floor	A1	A2	A3	A5	A6	A7	B1	B2	B3	B5	B6	B7	B8	C1	C2	C3	C5	C6	C7	C8
層與層之間的高度 (毫米) Floor-to-floor height (mm)	1樓 1/F	3150																			
樓板厚度 (毫米) Thickness of the floor slabs (mm)		150							150, 200			150				150, 200					

因住宅物業的較高樓層的結構牆的厚度遞減，較高樓層的內部面積，一般比較低樓層的內部面積稍大。

The internal areas of the residential properties on the upper floors will generally be slightly larger than those on the lower floors because of the reducing thickness of the structural walls on the upper floors.

備註：

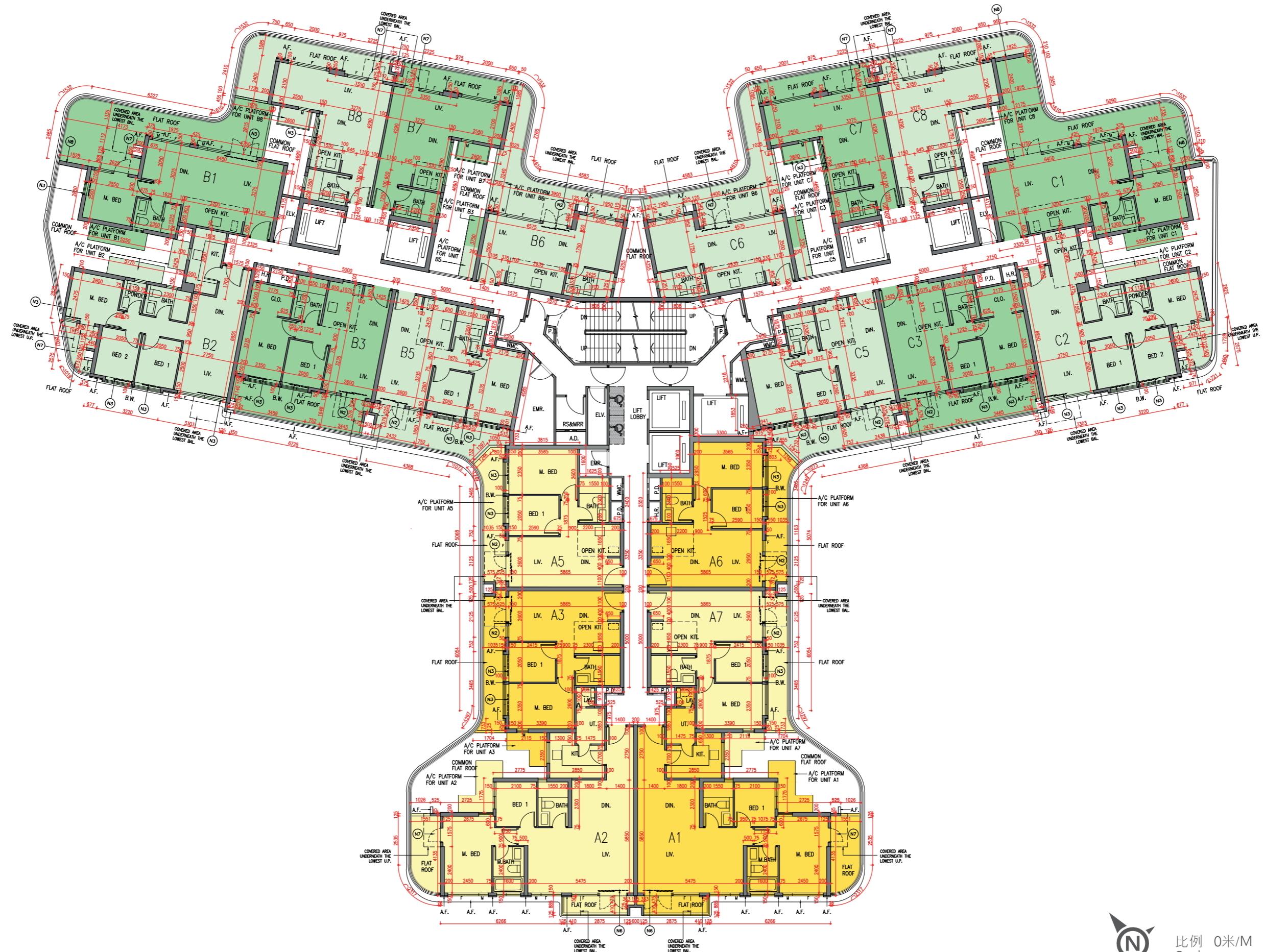
- 樓面平面圖之尺規所列數字為以毫米標示之建築結構尺寸。
- 每個住宅物業的層與層之間的高度指該樓層之結構地台面與上一層結構地台面之高度距離。
- 每個住宅物業的樓板的厚度不包括灰泥。
- 第1座不設4樓、13樓及14樓。

Notes:

- The dimensions in the floor plans are all structural dimensions in millimetre.
- The floor-to-floor height refers to the height between the top surface of the structural slab of a floor and the top surface of the structural slab of its immediate upper floor of each residential property.
- The thickness of the floor slabs excludes plaster of each residential property.
- 4/F, 13/F and 14/F are omitted in Tower 1.

第1座1樓平面圖

Tower 1, 1/F Floor Plan



## 10 發展項目的住宅物業的樓面平面圖 Floor Plans of Residential Properties in the Development

第1座 Tower 1	樓層 Floor	A1	A2	A3	A5	A6	A7	B1	B2	B3	B5	B6	B7	B8	C1	C2	C3	C5	C6	C7	C8
層與層之間的高度(毫米) Floor-to-floor height (mm)	2樓至15樓 2/F - 15/F	3150																			
	16樓 16/F	2850, 2900, 3100, 3150, 3450, 3500	3150, 3200, 3450, 3500	3150	3100, 3150	3150, 3450	2850, 3150, 3200, 3450	2850, 3100, 3150	3150	3150	3150						3150	3150			
樓板厚度(毫米) Thickness of the floor slabs (mm)	2樓至16樓 2/F - 16/F	150										150, 200		150				150, 200			

因住宅物業的較高樓層的結構牆的厚度遞減，較高樓層的內部面積，一般比較低樓層的內部面積稍大。

The internal areas of the residential properties on the upper floors will generally be slightly larger than those on the lower floors because of the reducing thickness of the structural walls on the upper floors.

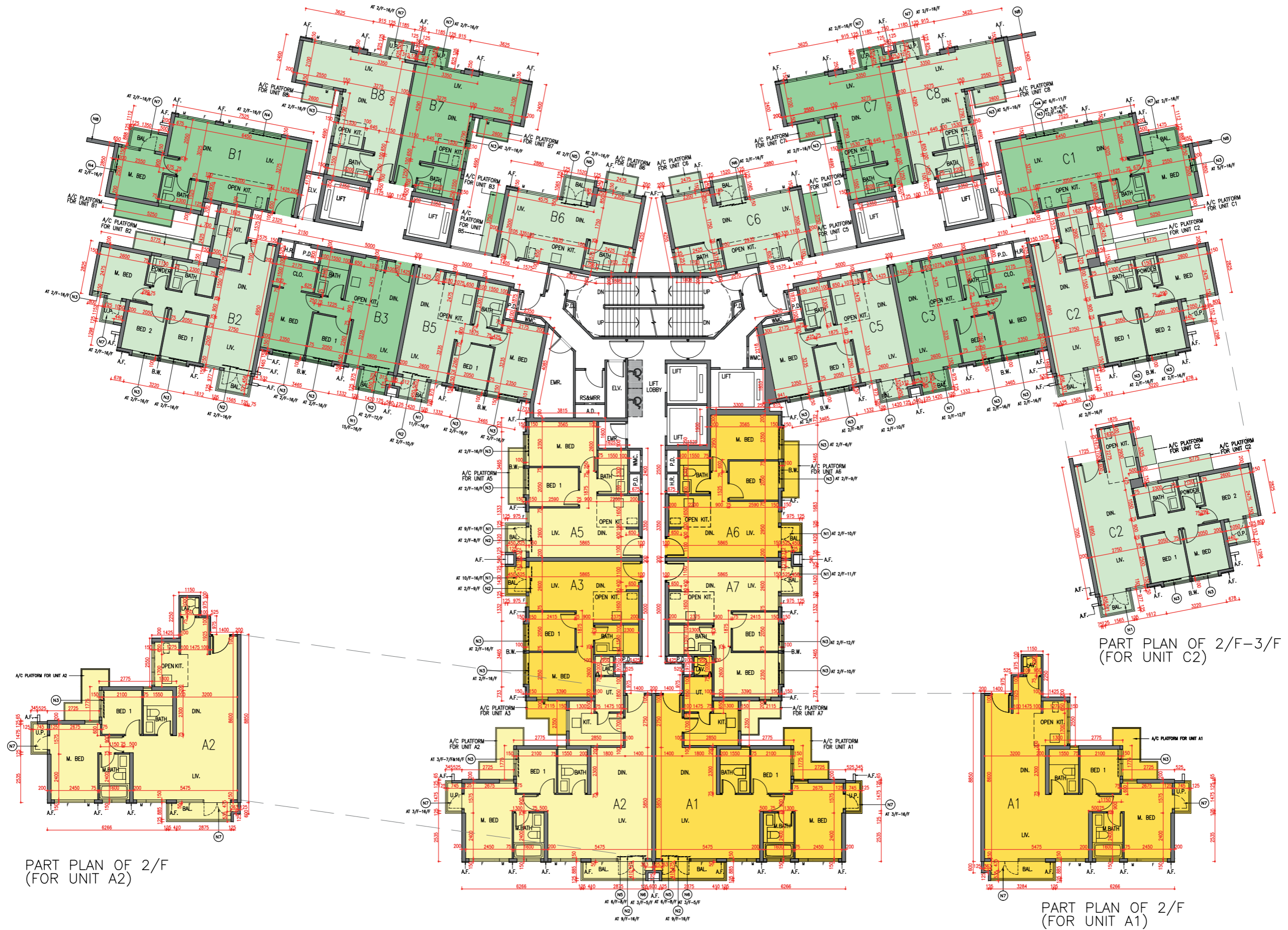
備註：

- 樓面平面圖之尺規所列數字為以毫米標示之建築結構尺寸。
- 每個住宅物業的層與層之間的高度指該樓層之結構地台面與上一層結構地台面之高度距離。
- 每個住宅物業的樓板的厚度不包括灰泥。
- 第1座不設4樓、13樓及14樓。

Notes:

- The dimensions in the floor plans are all structural dimensions in millimetre.
- The floor-to-floor height refers to the height between the top surface of the structural slab of a floor and the top surface of the structural slab of its immediate upper floor of each residential property.
- The thickness of the floor slabs excludes plaster of each residential property.
- 4/F, 13/F and 14/F are omitted in Tower 1.

第1座2樓至16樓平面圖  
Tower 1, 2/F - 16/F Floor Plan



PART PLAN OF 2/F-3/F  
(FOR UNIT C2)

PART PLAN OF 2/F  
(FOR UNIT A2)

PART PLAN OF 2/F  
(FOR UNIT A1)



## 10 發展項目的住宅物業的樓面平面圖 Floor Plans of Residential Properties in the Development

第1座 Tower 1	樓層 Floor	A1	A3	A5	A6	A7	B1	B3	B5	B6	B7	B8	C1	C2	C3	C5	C6	C7	C8
層與層之間的高度(毫米) Floor-to-floor height (mm)	17樓 17/F	3300, 3350, 3600	3300, 3600	3300, 3350, 3600		3300, 3600	3300, 3350, 3600	3300, 3600	3300, 3600		3300, 3350, 3600			3300, 3600			3300, 3350, 3600		
樓板厚度(毫米) Thickness of the floor slabs (mm)		150						150, 200		150		150		150, 200					

因住宅物業的較高樓層的結構牆的厚度遞減，較高樓層的內部面積，一般比較低樓層的內部面積稍大。

The internal areas of the residential properties on the upper floors will generally be slightly larger than those on the lower floors because of the reducing thickness of the structural walls on the upper floors.

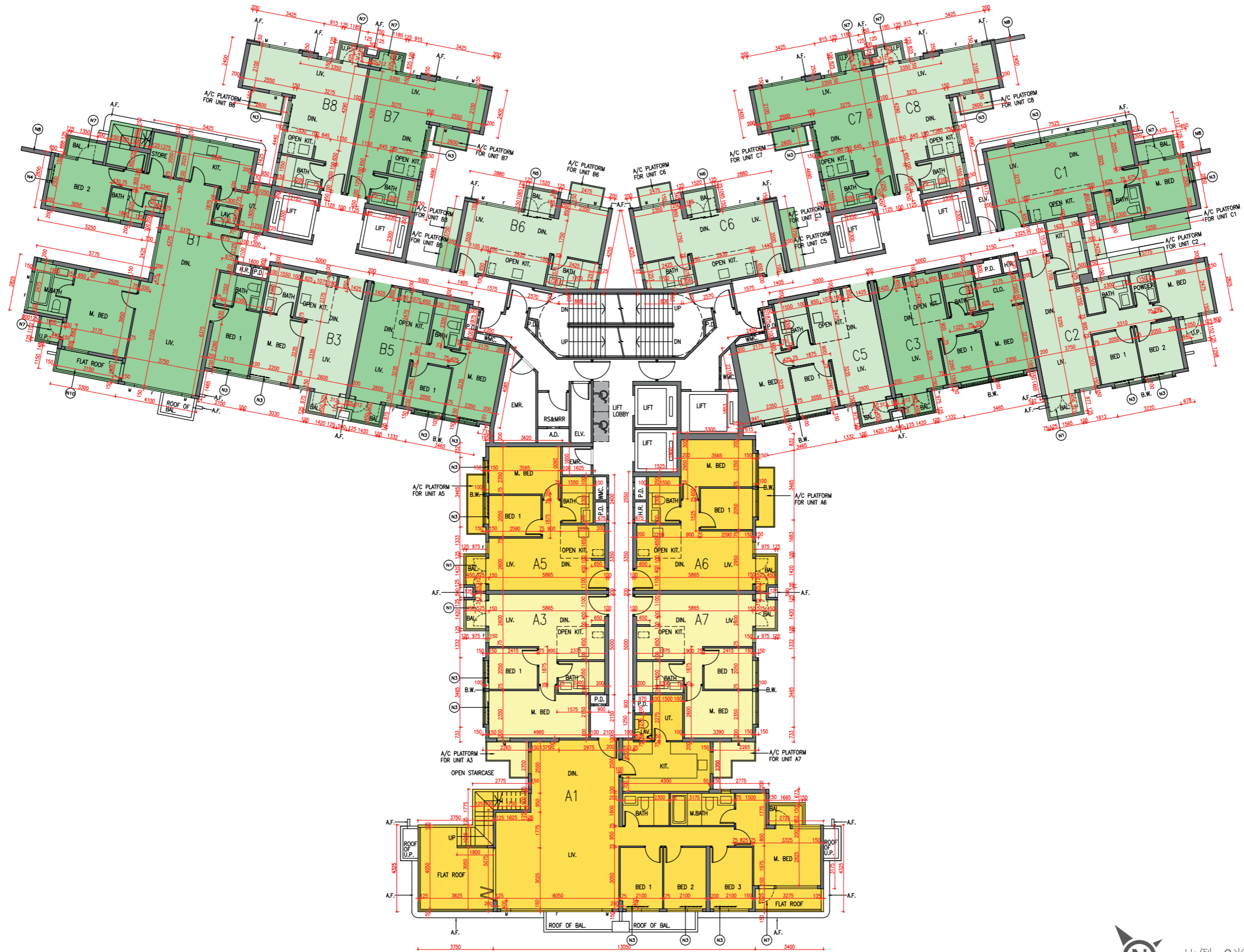
備註：

- 樓面平面圖之尺規所列數字為以毫米標示之建築結構尺寸。
- 每個住宅物業的層與層之間的高度指該樓層之結構地台面與上一層結構地台面之高度距離。
- 每個住宅物業的樓板的厚度不包括灰泥。
- 第1座不設4樓、13樓及14樓。

Notes:

- The dimensions in the floor plans are all structural dimensions in millimetre.
- The floor-to-floor height refers to the height between the top surface of the structural slab of a floor and the top surface of the structural slab of its immediate upper floor of each residential property.
- The thickness of the floor slabs excludes plaster of each residential property.
- 4/F, 13/F and 14/F are omitted in Tower 1.

第1座17樓平面圖  
Tower 1, 17/F Floor Plan





## 10 發展項目的住宅物業的樓面平面圖 Floor Plans of Residential Properties in the Development

第1座 Tower 1	樓層 Floor	A1	A3	A7	B1	B3	B5	B7	B8	C1	C2	C3	C5	C7	C8
層與層之間的高度 (毫米) Floor-to-floor height (mm)	天台 Roof	不適用 N/A													
樓板厚度 (毫米) Thickness of the floor slabs (mm)		不適用 N/A													

因住宅物業的較高樓層的結構牆的厚度遞減，較高樓層的內部面積，一般比較低樓層的內部面積稍大。

The internal areas of the residential properties on the upper floors will generally be slightly larger than those on the lower floors because of the reducing thickness of the structural walls on the upper floors.

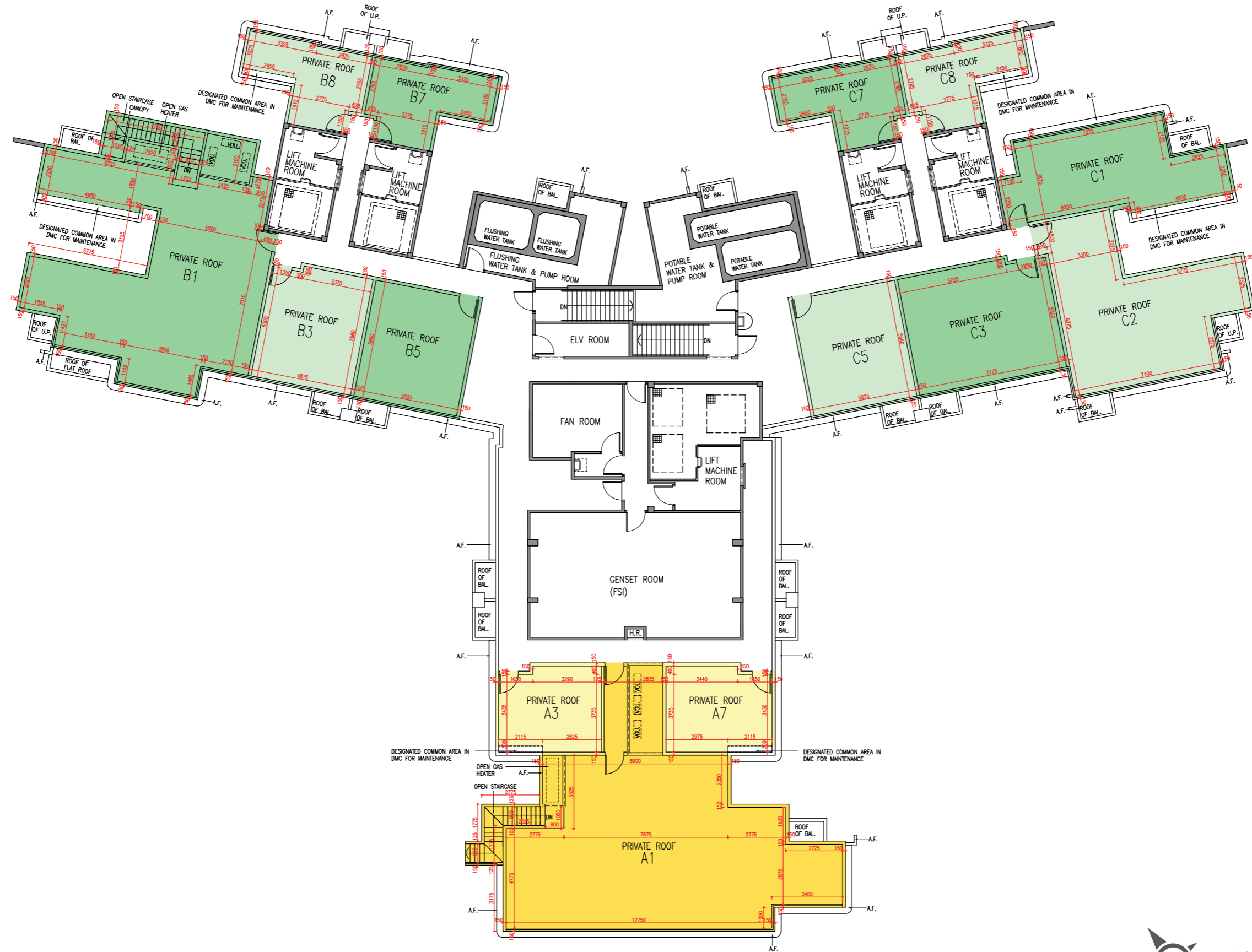
備註：

- 樓面平面圖之尺規所列數字為以毫米標示之建築結構尺寸。
- 每個住宅物業的層與層之間的高度指該樓層之結構地台面與上一層結構地台面之高度距離。
- 每個住宅物業的樓板的厚度不包括灰泥。
- 第1座不設4樓、13樓及14樓。

Notes:

- The dimensions in the floor plans are all structural dimensions in millimetre.
- The floor-to-floor height refers to the height between the top surface of the structural slab of a floor and the top surface of the structural slab of its immediate upper floor of each residential property.
- The thickness of the floor slabs excludes plaster of each residential property.
- 4/F, 13/F and 14/F are omitted in Tower 1.

第1座天台平面圖  
Tower 1, Roof Floor Plan



## 10 發展項目的住宅物業的樓面平面圖 Floor Plans of Residential Properties in the Development

第2座 Tower 2	樓層 Floor	複式單位A Duplex A	複式單位B Duplex B	複式單位C Duplex C	複式單位D Duplex D
層與層之間的高度(毫米) Floor-to-floor height (mm)	2樓 2/F	3300			
樓板厚度(毫米) Thickness of the floor slabs (mm)		150			

因住宅物業的較高樓層的結構牆的厚度遞減，較高樓層的內部面積，一般比較低樓層的內部面積稍大。

The internal areas of the residential properties on the upper floors will generally be slightly larger than those on the lower floors because of the reducing thickness of the structural walls on the upper floors.

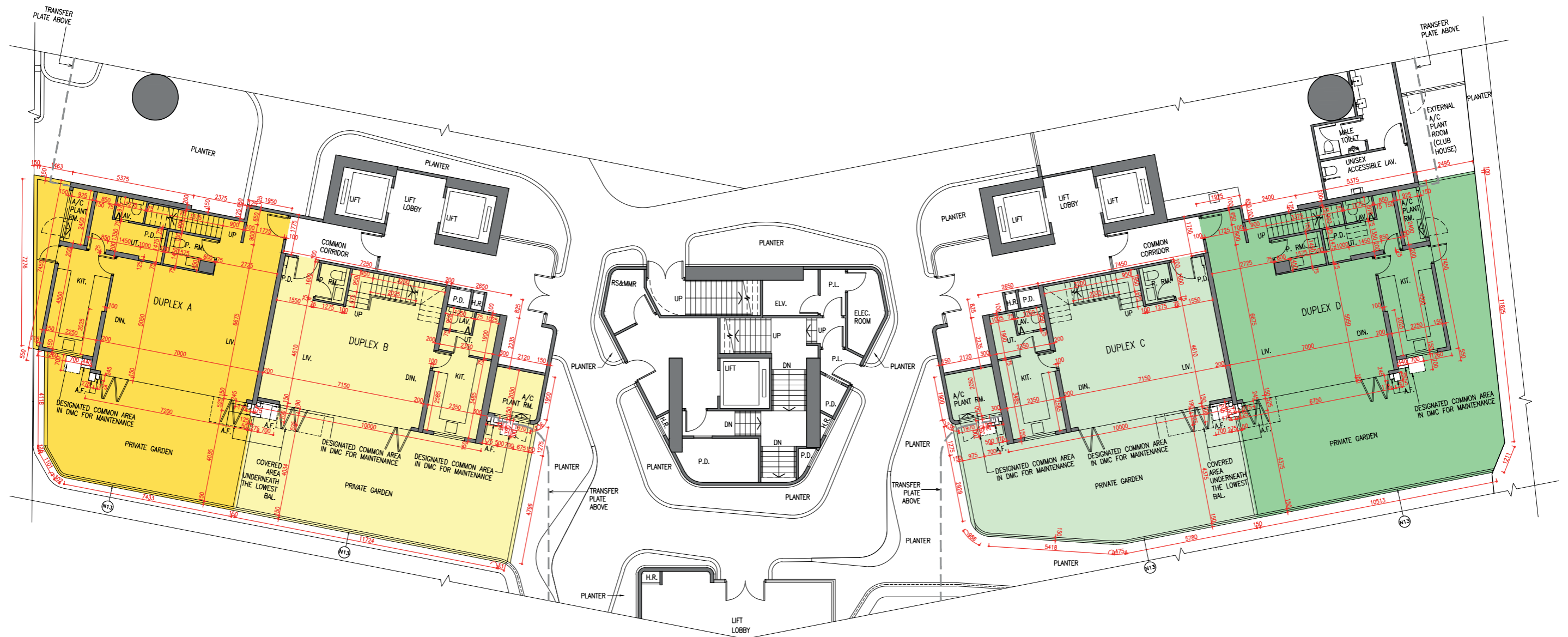
備註：

- 樓面平面圖之尺規所列數字為以毫米標示之建築結構尺寸。
- 每個住宅物業的層與層之間的高度指該樓層之結構地台面與上一層結構地台面之高度距離。
- 每個住宅物業的樓板的厚度不包括灰泥。
- 第2座不設3樓、4樓、13樓及14樓。

Notes:

- The dimensions in the floor plans are all structural dimensions in millimetre.
- The floor-to-floor height refers to the height between the top surface of the structural slab of a floor and the top surface of the structural slab of its immediate upper floor of each residential property.
- The thickness of the floor slabs excludes plaster of each residential property.
- 3/F, 4/F, 13/F and 14/F are omitted in Tower 2.

第2座2樓平面圖  
Tower 2, 2/F Floor Plan



## 10 發展項目的住宅物業的樓面平面圖 Floor Plans of Residential Properties in the Development

第2座 Tower 2	樓層 Floor	複式單位A Duplex A	複式單位B Duplex B	複式單位C Duplex C	複式單位D Duplex D
層與層之間的高度(毫米) Floor-to-floor height (mm)	2樓之上層 Upper Part of 2/F	3300			
樓板厚度(毫米) Thickness of the floor slabs (mm)		150			

因住宅物業的較高樓層的結構牆的厚度遞減，較高樓層的內部面積，一般比較低樓層的內部面積稍大。

The internal areas of the residential properties on the upper floors will generally be slightly larger than those on the lower floors because of the reducing thickness of the structural walls on the upper floors.

備註：

- 樓面平面圖之尺規所列數字為以毫米標示之建築結構尺寸。
- 每個住宅物業的層與層之間的高度指該樓層之結構地台面與上一層結構地台面之高度距離。
- 每個住宅物業的樓板的厚度不包括灰泥。
- 第2座不設3樓、4樓、13樓及14樓。

Notes:

- The dimensions in the floor plans are all structural dimensions in millimetre.
- The floor-to-floor height refers to the height between the top surface of the structural slab of a floor and the top surface of the structural slab of its immediate upper floor of each residential property.
- The thickness of the floor slabs excludes plaster of each residential property.
- 3/F, 4/F, 13/F and 14/F are omitted in Tower 2.

第2座2樓之上層平面圖

Tower 2, Upper Part of 2/F Floor Plan



## 10 發展項目的住宅物業的樓面平面圖 Floor Plans of Residential Properties in the Development

第2座 Tower 2	樓層 Floor	A1	A2	A3	A5	A6	A7	A8	A9	B1	B2	B3	B5	B6	C1	C2	C3	C5	C6
層與層之間的高度 (毫米) Floor-to-floor height (mm)	5樓 5/F	3150									3150, 3200	3150			3150, 3200	3150			
樓板厚度 (毫米) Thickness of the floor slabs (mm)		150																	

因住宅物業的較高樓層的結構牆的厚度遞減，較高樓層的內部面積，一般比較低樓層的內部面積稍大。

The internal areas of the residential properties on the upper floors will generally be slightly larger than those on the lower floors because of the reducing thickness of the structural walls on the upper floors.

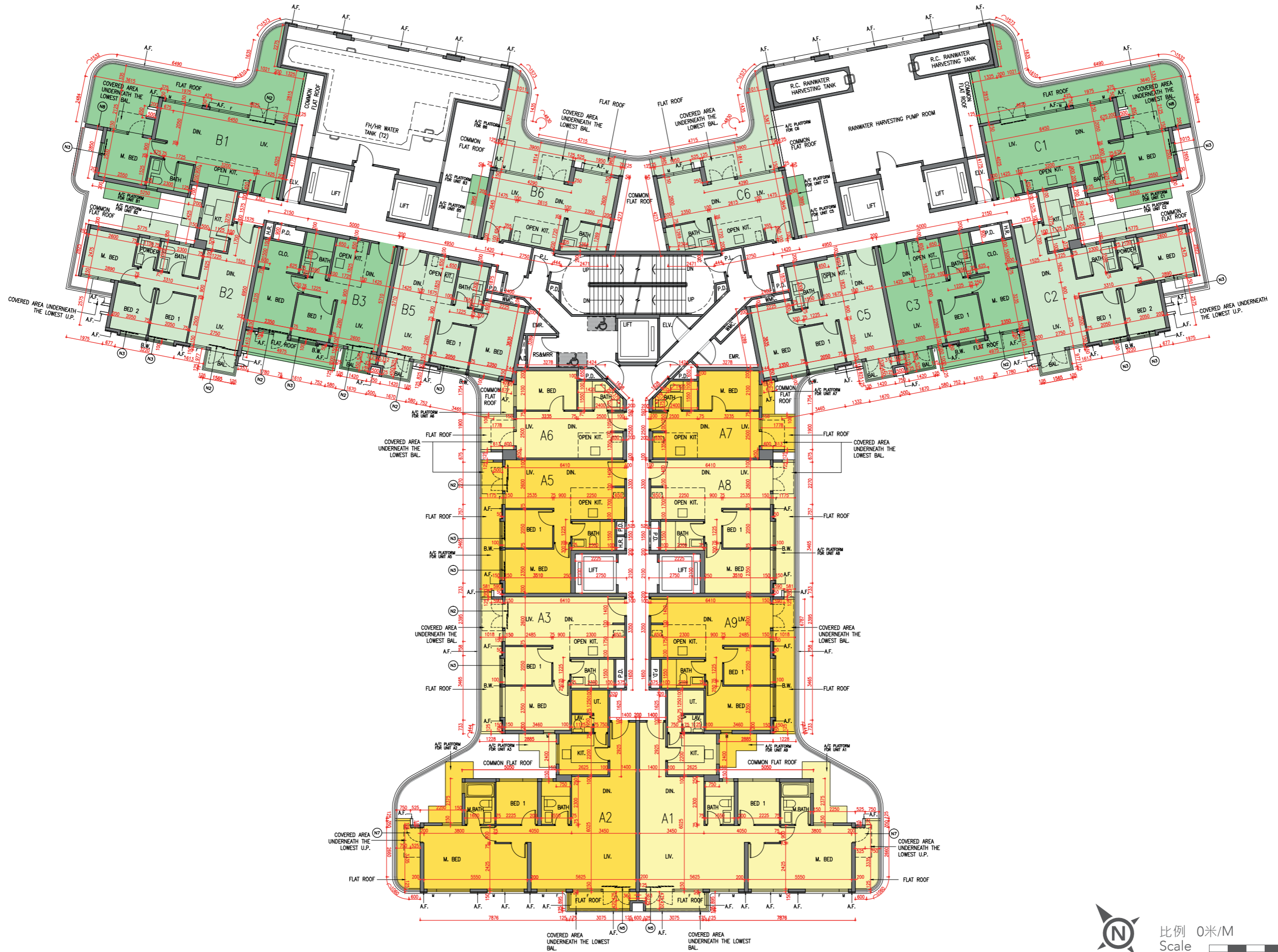
備註：

- 樓面平面圖之尺規所列數字為以毫米標示之建築結構尺寸。
- 每個住宅物業的層與層之間的高度指該樓層之結構地台面與上一層結構地台面之高度距離。
- 每個住宅物業的樓板的厚度不包括灰泥。
- 第2座不設3樓、4樓、13樓及14樓。

Notes:

- The dimensions in the floor plans are all structural dimensions in millimetre.
- The floor-to-floor height refers to the height between the top surface of the structural slab of a floor and the top surface of the structural slab of its immediate upper floor of each residential property.
- The thickness of the floor slabs excludes plaster of each residential property.
- 3/F, 4/F, 13/F and 14/F are omitted in Tower 2.

第2座5樓平面圖  
Tower 2, 5/F Floor Plan





## 10 發展項目的住宅物業的樓面平面圖 Floor Plans of Residential Properties in the Development

第2座 Tower 2	樓層 Floor	A1	A2	A3	A5	A6	A7	A8	A9	B1	B2	B3	B5	B6	B7	B8	C1	C2	C3	C5	C6	C7	C8
層與層之間的高度 (毫米) Floor-to-floor height (mm)	6樓至15樓 6/F - 15/F	3150																					
	16樓 16/F	3150, 3200, 3450	2850, 2900, 3100, 3150, 3200, 3450	3150						2850, 3150, 3200, 3450	2850, 3150	3150				2850, 3150, 3200, 3450	2850, 3150	3150					
樓板厚度 (毫米) Thickness of the floor slabs (mm)	6樓至16樓 6/F - 16/F	150												150, 200		150				150, 200			

因住宅物業的較高樓層的結構牆的厚度遞減，較高樓層的內部面積，一般比較低樓層的內部面積稍大。

The internal areas of the residential properties on the upper floors will generally be slightly larger than those on the lower floors because of the reducing thickness of the structural walls on the upper floors.

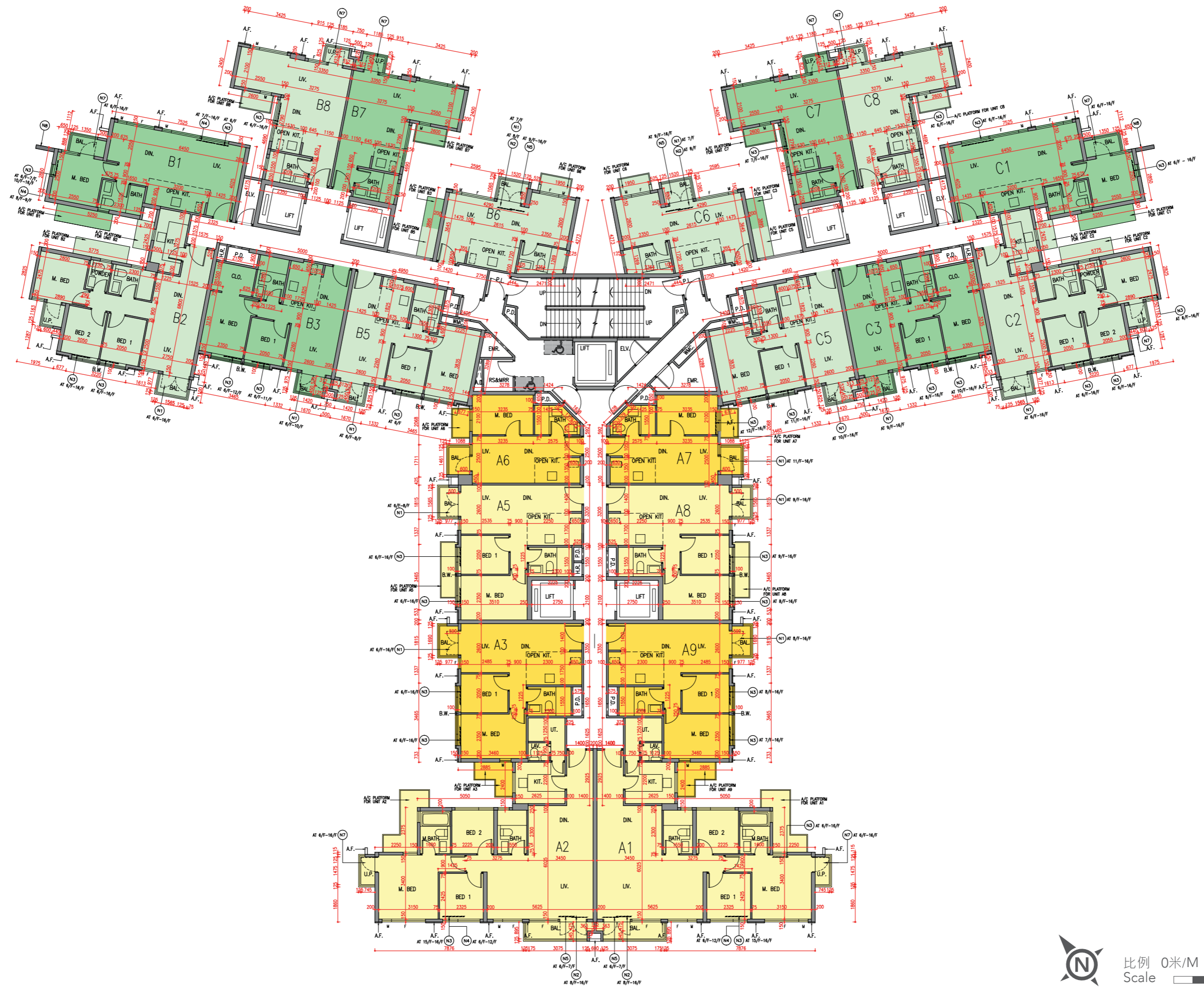
備註：

- 樓面平面圖之尺規所列數字為以毫米標示之建築結構尺寸。
- 每個住宅物業的層與層之間的高度指該樓層之結構地台面與上一層結構地台面之高度距離。
- 每個住宅物業的樓板的厚度不包括灰泥。
- 第2座不設3樓、4樓、13樓及14樓。

Notes:

- The dimensions in the floor plans are all structural dimensions in millimetre.
- The floor-to-floor height refers to the height between the top surface of the structural slab of a floor and the top surface of the structural slab of its immediate upper floor of each residential property.
- The thickness of the floor slabs excludes plaster of each residential property.
- 3/F, 4/F, 13/F and 14/F are omitted in Tower 2.

第2座6樓至16樓平面圖  
Tower 2, 6/F - 16/F Floor Plan



## 10 發展項目的住宅物業的樓面平面圖 Floor Plans of Residential Properties in the Development

第2座 Tower 2	樓層 Floor	A1	A3	A5	A6	A7	A8	A9	B1	B3	B5	B6	B7	B8	C1	C3	C5	C6	C7	C8
層與層之間的高度 (毫米) Floor-to-floor height (mm)	17樓 17/F	3300, 3350, 3600							3300, 3600			3300, 3350, 3600		3300, 3600			3300, 3350, 3600			
樓板厚度 (毫米) Thickness of the floor slabs (mm)		150											150, 200		150		150, 200			

因住宅物業的較高樓層的結構牆的厚度遞減，較高樓層的內部面積，一般比較低樓層的內部面積稍大。

The internal areas of the residential properties on the upper floors will generally be slightly larger than those on the lower floors because of the reducing thickness of the structural walls on the upper floors.

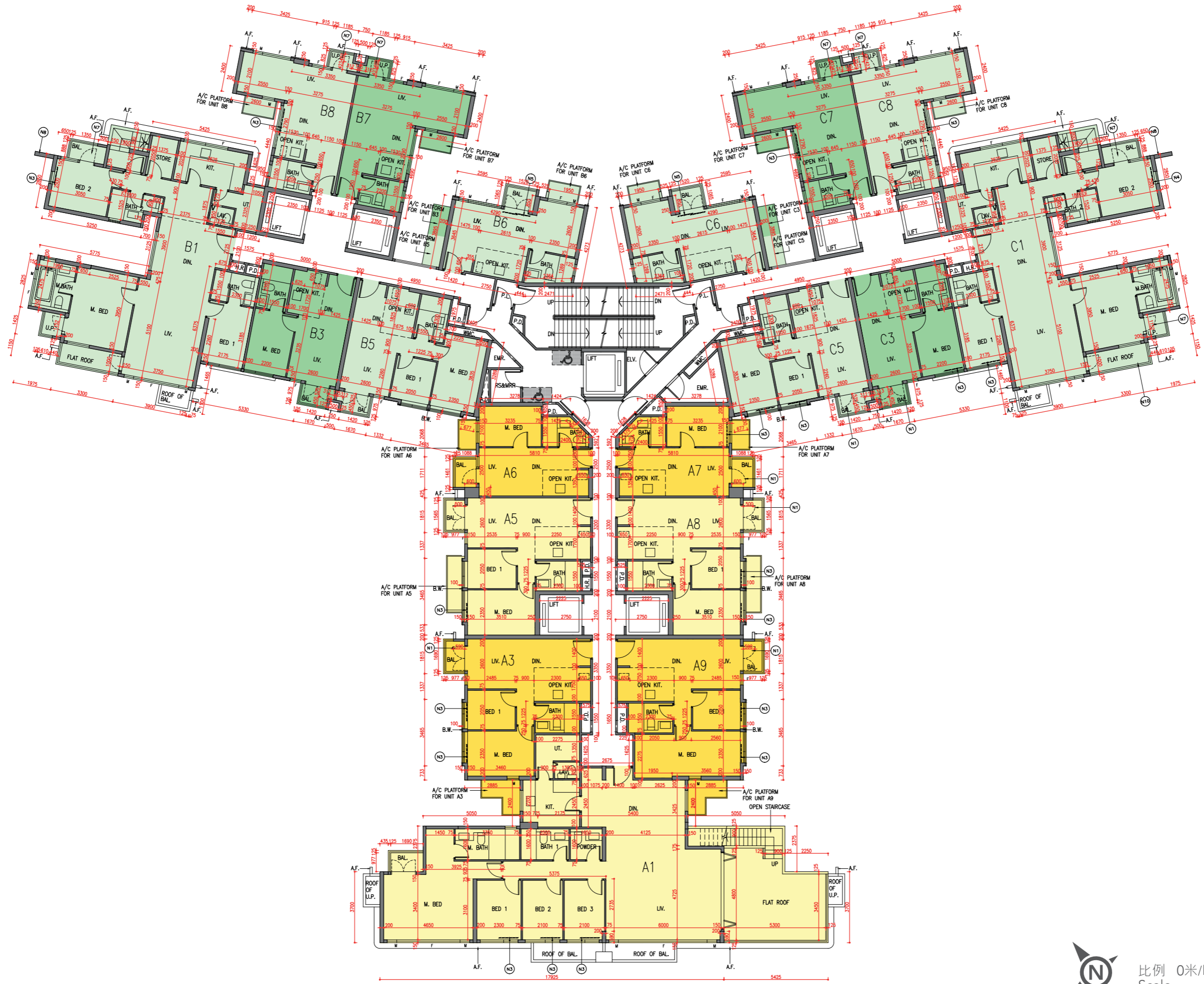
備註：

- 樓面平面圖之尺規所列數字為以毫米標示之建築結構尺寸。
- 每個住宅物業的層與層之間的高度指該樓層之結構地台面與上一層結構地台面之高度距離。
- 每個住宅物業的樓板的厚度不包括灰泥。
- 第2座不設3樓、4樓、13樓及14樓。

Notes:

- The dimensions in the floor plans are all structural dimensions in millimetre.
- The floor-to-floor height refers to the height between the top surface of the structural slab of a floor and the top surface of the structural slab of its immediate upper floor of each residential property.
- The thickness of the floor slabs excludes plaster of each residential property.
- 3/F, 4/F, 13/F and 14/F are omitted in Tower 2.

第2座17樓平面圖  
Tower 2, 17/F Floor Plan



## 10 發展項目的住宅物業的樓面平面圖 Floor Plans of Residential Properties in the Development

第2座 Tower 2	樓層 Floor	A1	A3	A5	A8	A9	B1	B3	B5	B7	B8	C1	C3	C5	C7	C8
層與層之間的高度(毫米) Floor-to-floor height (mm)	天台 Roof	不適用 N/A														
樓板厚度(毫米) Thickness of the floor slabs (mm)		不適用 N/A														

因住宅物業的較高樓層的結構牆的厚度遞減，較高樓層的內部面積，一般比較低樓層的內部面積稍大。

The internal areas of the residential properties on the upper floors will generally be slightly larger than those on the lower floors because of the reducing thickness of the structural walls on the upper floors.

備註：

- 樓面平面圖之尺規所列數字為以毫米標示之建築結構尺寸。
- 每個住宅物業的層與層之間的高度指該樓層之結構地台面與上一層結構地台面之高度距離。
- 每個住宅物業的樓板的厚度不包括灰泥。
- 第2座不設3樓、4樓、13樓及14樓。

Notes:

- The dimensions in the floor plans are all structural dimensions in millimetre.
- The floor-to-floor height refers to the height between the top surface of the structural slab of a floor and the top surface of the structural slab of its immediate upper floor of each residential property.
- The thickness of the floor slabs excludes plaster of each residential property.
- 3/F, 4/F, 13/F and 14/F are omitted in Tower 2.

第2座天台平面圖  
Tower 2, Roof Floor Plan

